

35 HUNTMAR DRIVE & 21 HUNTMAR DRIVE



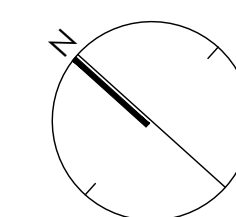
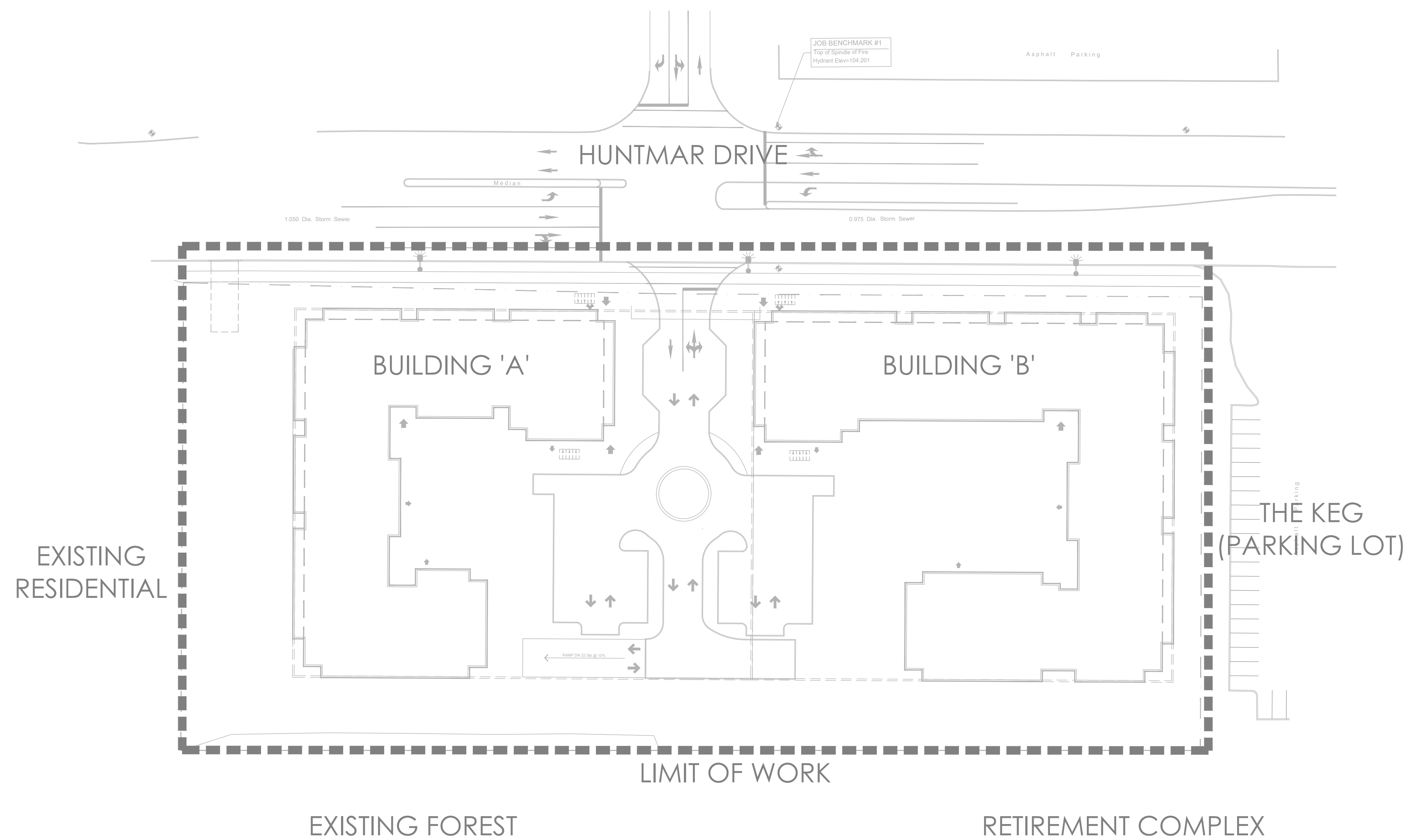
NAK PROJECT NO. 20-173

35 HUNTMAR DRIVE
&
21 HUNTMAR DRIVE

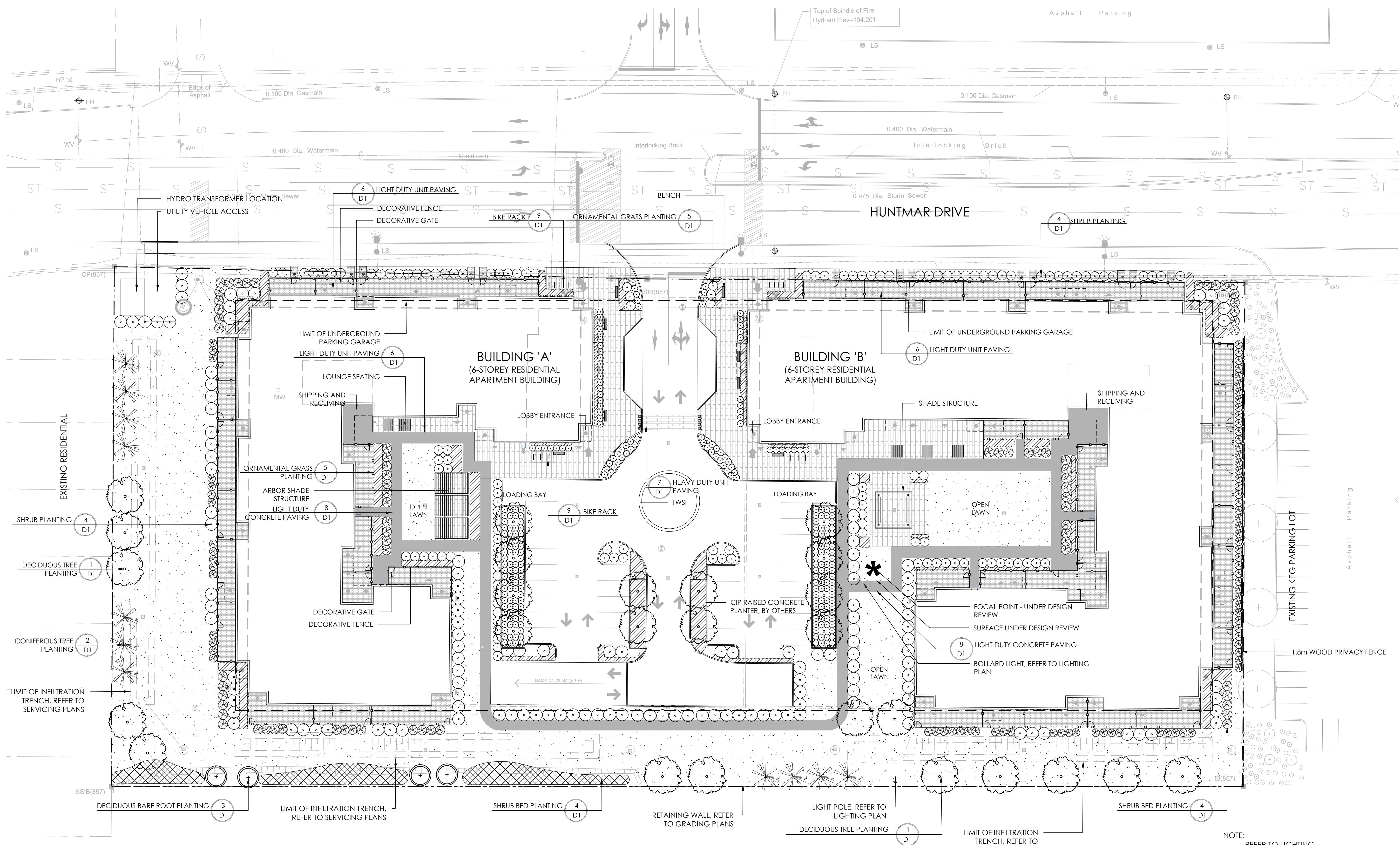
ISSUED FOR THIRD SUBMISSION
SEPTEMBER 28, 2021

LIST OF DRAWINGS:

| | |
|----------------|------------------|
| <u>NAK</u> | |
| L01 | - LANDSCAPE PLAN |
| L02 | - PLANTING PLAN |
| <u>DETAILS</u> | |
| D01 | - DETAILS |



KEYMAP
NTS

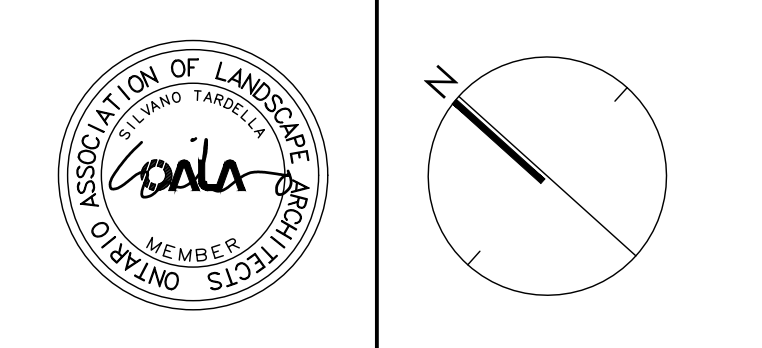


Contractor shall check all dimensions on the work and report any discrepancy to the Landscape Architect before proceeding. All drawings and specifications are the property of the Landscape Architect and must be returned at the completion of the work. This drawing is not to be used for construction until signed by the Landscape Architect.



- LEGEND**
- PROPERTY LINE
 - LIMIT OF UNDERGROUND PARKING GARAGE
- FENCING**
- 1.2m HEIGHT DECORATIVE FENCE
 - 1.8m PRIVACY FENCE
- PLANTING**
- EXISTING TREE
 - DECIDUOUS TREE
 - CONIFEROUS TREE
 - RESTORATION PLANTING (SHRUBS + TREE WHIPS)
 - DECIDUOUS SHRUB
 - CONIFEROUS SHRUB
 - GRASSES/PERENNIALS
- SURFACING**
- C.I.P CONCRETE PAVING
 - UNIT PAVING - PRIVATE PATIO - 10X20
 - UNIT PAVING - LARGE PLANK - 20X40
- LIGHTING (REFER TO LIGHTING PLAN FOR DETAILS)**
- BOLLARD LIGHT
 - TWO FIXTURE LIGHT POLE
 - ONE FIXTURE LIGHT POLE
- AMENITIES**
- BENCH
 - LOUNGE SEATING
 - BIKE RACKS
 - ARBOR SHADE STRUCTURE
 - SHADE STRUCTURE
 - FOCAL POINT (UNDER DESIGN REVIEW)
- DETAIL KEY**
- DETAIL NO.
 - SHEET NO.

| | | |
|---------------------|--|-------------|
| 8 | Issued for Third Submission | Sept. 28/21 |
| 7 | Issued for Coordination | Aug. 30/21 |
| 6 | Issued for Second Submission | Jun. 28/21 |
| 5 | Issued for First Submission | Feb. 04/21 |
| 4 | Issued for Client Review | Dec. 18/20 |
| 3 | Lighting Plan Issued for Review | Dec. 16/20 |
| 2 | Preliminary Concept Issued for Review | Nov. 26/20 |
| 1 | Schematic Landscape Plan Issued for Review | Nov. 18/20 |
| No. | Description | Date |
| Revision | | |
| City Approval Stamp | | |



NAK design strategies

1285 WELLINGTON STREET WEST, OTTAWA, ON K1Y 3A8 CANADA
 T 613.237.2345 F 613.237.4423 NAKDESIGNSTRATEGIES.COM

Project

35 Huntmar Drive & 21 Huntmar Drive

Title

LANDSCAPE PLAN

Date September 2021 Sheet

Scale 1:300

Drawn JC/SH

Checked TM

Job No. 20-173

L-01

| | |
|---|---|
| PROJECT DEVELOPER NORTH AMERICAN DEVELOPMENT GROUP 2851 John Street, Suite One Northham, Ontario L3R 5B7 Tel: (905) 477-9200 E-Mail: vmccrum@nadg.com | ARCHITECT RIA ARCHITECTURE RODERICK LAHEY ARCHITECT INC. 56 Beech Street Ottawa, ON K1S 3J6 Tel: (613) 724-9932 • Fax: (613) 724-1209 E-Mail: riaarchitecture.ca |
| SURVEYOR FAIRHALL, MOFFATT & WOODLAND LIMITED 100-600 TERRY FOX DRIVE KANATA, ONTARIO K2L 4B6 Tel: (613) 591-2580 • Fax: (613) 591-1495 Email: info@fmw.on.ca | CIVIL ENGINEER BI GROUP 400-333 Preston Street Ottawa ON K1S 9N4 Canada Tel: (613) 225-1311 Email: dyanmoulopoulos@BIGroup.com |
| GEOTECHNICAL ENGINEER paterson group 154 Colborne Road South Ottawa, Ontario, K2E 7J5 Tel: (613) 226-7381 Email: DGilbert@Patersongroup.ca | TRANSPORTATION ENGINEER D. J. Halpenny & Associates Ltd. Consulting Transportation Engineers P. O. Box 774, Maricook, ON K4M 1A7 Tel: (613) 692-8662 • Fax: (613) 692-1945 Email: david@dhalpenny.com |

Contractor shall check all dimensions on the work and report any discrepancy to the Landscape Architect before proceeding. All drawings and specifications are the property of the Landscape Architect and must be returned at the completion of the work. This drawing is not to be used for construction until signed by the Landscape Architect.

Key Plan



PROPERTY LINE
LIMIT OF UNDERGROUND PARKING GARAGE

FENCING
1.2m HEIGHT DECORATIVE FENCE
1.8m PRIVACY FENCE

PLANTING
EXISTING TREE
DECIDUOUS TREE
CONIFEROUS TREE
RESTORATION PLANTING (SHRUBS + TREE WHIPS)
DECIDUOUS SHRUB
CONIFEROUS SHRUB
GRASSES/PERENNIALS

SURFACING
C.I.P. CONCRETE PAVING
UNIT PAVING - PRIVATE PATIO - 10X20
UNIT PAVING - LARGE PLANK - 20X40

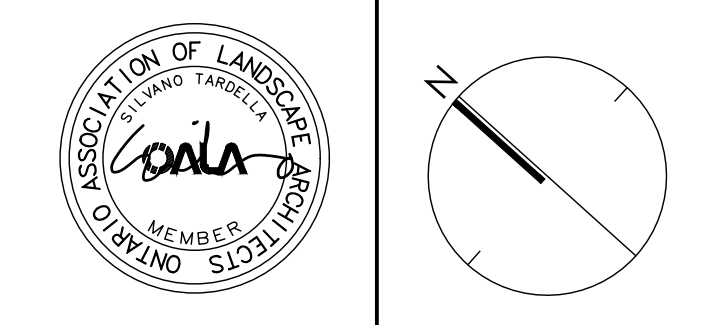
LIGHTING (REFER TO LIGHTING PLAN FOR DETAILS)
BOLLARD LIGHT
TWO FIXTURE LIGHT POLE
ONE FIXTURE LIGHT POLE

AMENITIES
BENCH
LOUNGE SEATING
BIKE RACKS
ARBOR SHADE STRUCTURE
SHADE STRUCTURE
FOCAL POINT (UNDER DESIGN REVIEW)

DETAIL KEY
1 - DETAIL NO.
D1 - SHEET NO.
XX - SHRUB SPECIES
00 - QUANTITY

| | | |
|---|--|------------|
| 8 | Issued for Third Submission | Sep. 28/21 |
| 7 | Issued for Coordination | Aug. 30/21 |
| 6 | Issued for Second Submission | Jun. 28/21 |
| 5 | Issued for First Submission | Feb. 04/21 |
| 4 | Issued for Client Review | Dec. 18/20 |
| 3 | Lighting Plan Issued for Review | Dec. 16/20 |
| 2 | Preliminary Concept Issued for Review | Nov. 24/20 |
| 1 | Schematic Landscape Plan Issued for Review | Nov. 18/20 |

Revision
City Approval Stamp



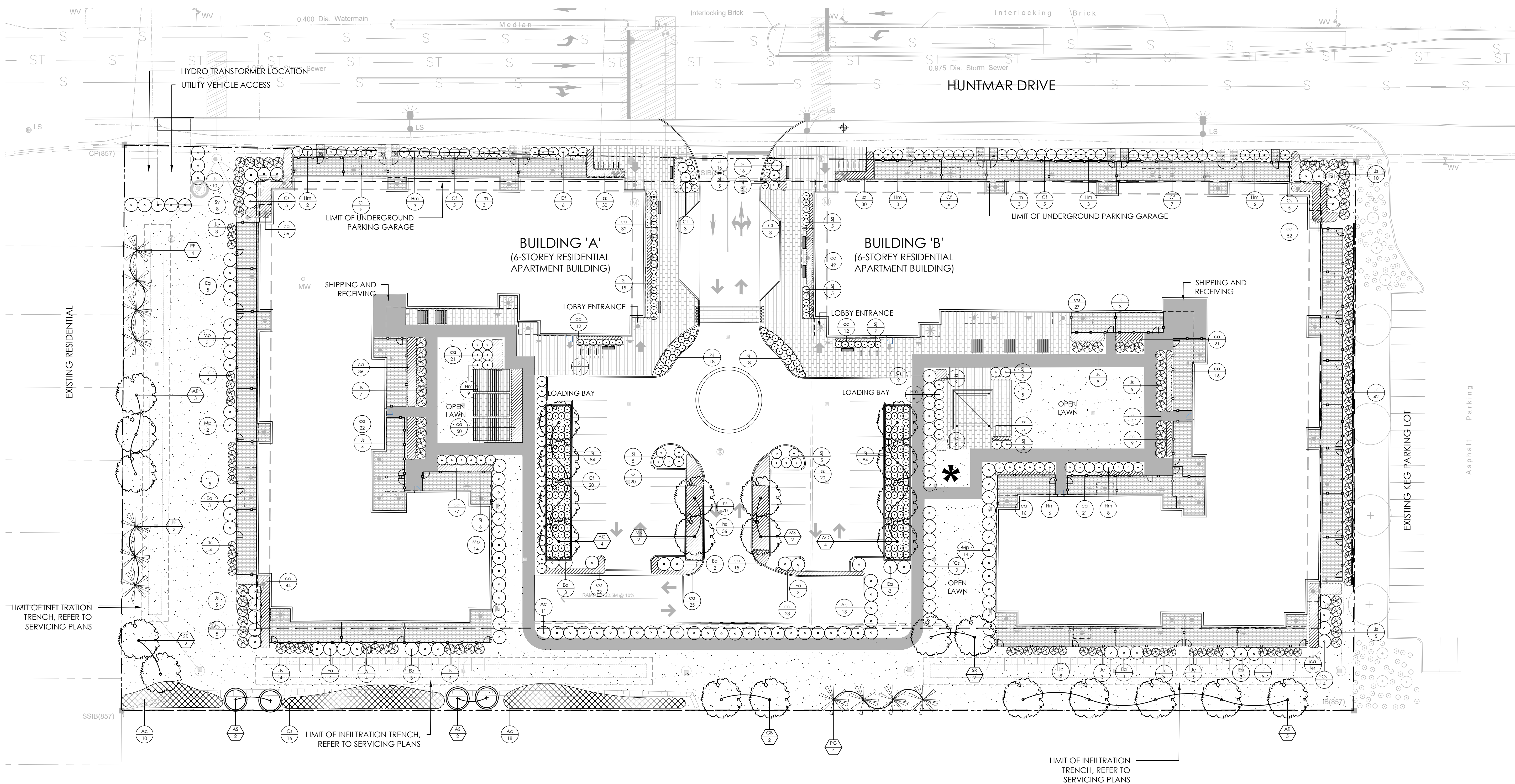
NAK design strategies
1285 WELLINGTON STREET WEST, OTTAWA, ON K1Y 3A8 CANADA
T 613.237.2345 F 613.237.6423 NAKDESIGNSTRATEGIES.COM

Project

35 Huntmar Drive & 21 Huntmar Drive

PLANTING PLAN

Date: September 2021
Scale: 1:300
Drawn: JCS/H
Checked: TM
Job No.: 20-173
Sheet: L-02

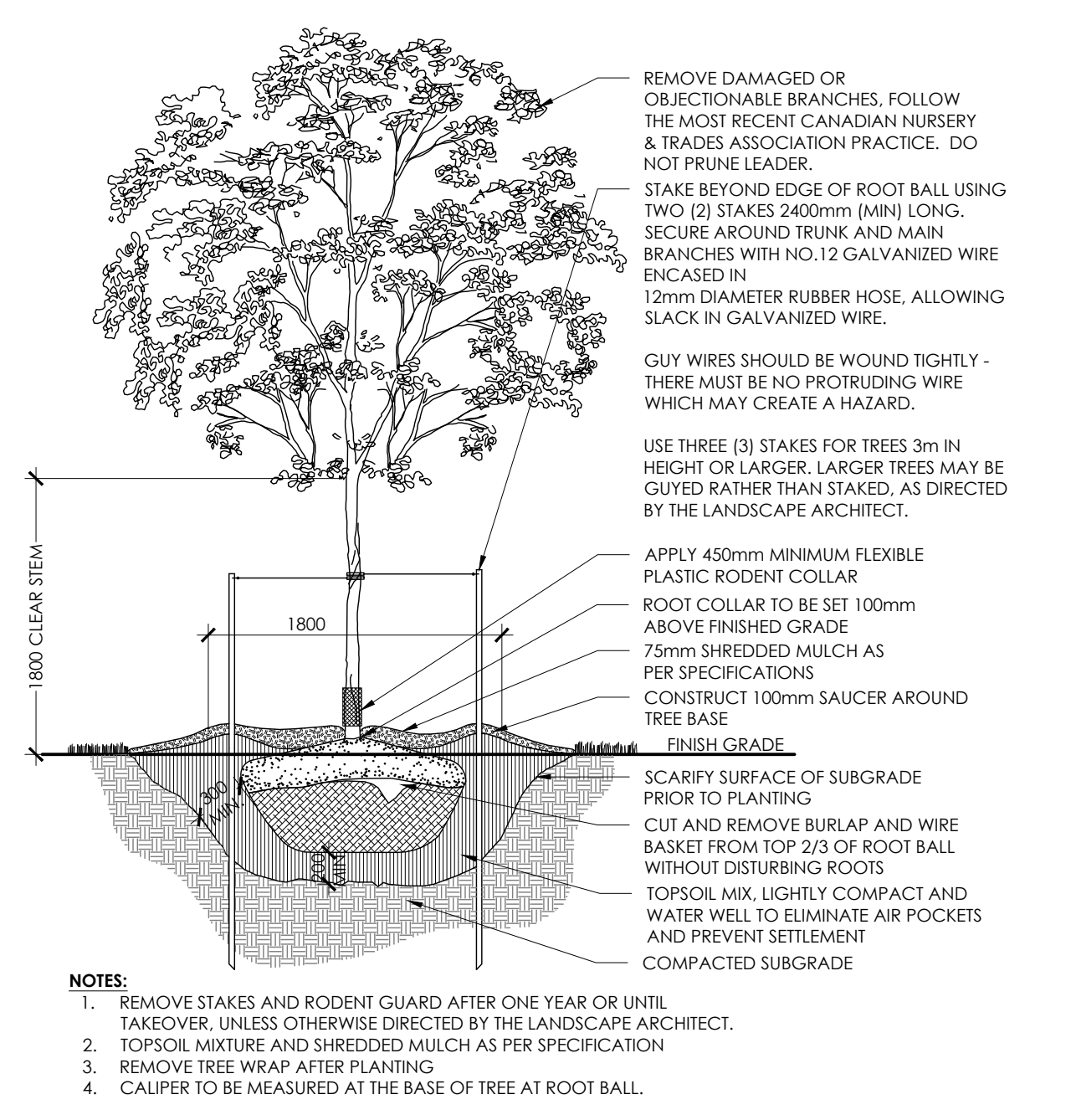


| KEY | QTY. | BOTANICAL NAME | COMMON NAME | CAL/HT. (mm) | ROOT |
|--|------|----------------------------------|-----------------------------|--------------|------|
| SMALL DECIDUOUS TREES (<7.5m) | | | | | |
| AC | 8 | AMELANCHIER CANADENSIS | SERVICEBERRY | 60 | B&B |
| MS | 12 | MALUS SNOWDRIFT | SNOWDRIFT CRABAPPLE | 60 | B&B |
| MEDIUM DECIDUOUS TREES (7.5m-15m) | | | | | |
| SR | 4 | SYRINGA RETICULATA | JAPANESE LILAC | 60 | B&B |
| LARGE DECIDUOUS TREES (>15m) | | | | | |
| AR | 8 | ACER RUBRUM | RED MAPLE | 60 | B&B |
| GB | 10 | GINKGO BILOBA | GINKGO | 60 | B&B |
| CONIFEROUS TREES | | | | | |
| PF | 7 | PINUS STROBUS 'FASTIGIATA' | COLUMNAR EASTERN WHITE PINE | 200 | B&B |
| PG | 4 | PICEA GLAUCA | WHITE SPRUCE | 200 | B&B |
| TT | | | | | |
| DECIDUOUS WHIPS | | | | | |
| AS | 4 | ACER SACCHARUM | SUGAR MAPLE | 150cm ht. | B.R. |
| DECIDUOUS SHRUBS | | | | | |
| Ac | 52 | AMELANCHIER CANADENSIS | SERVICEBERRY | 3 GAL. | |
| Cf | 40 | CORNUS SERICEA 'FARROW' | ARCTIC FIRE DOGWOOD | 3 GAL. | |
| Cs | 53 | CORNUS SERICEA | RED OSIER DOGWOOD | 3 GAL. | |
| Ea | 31 | EUONYMUS ALATUS 'COMPACTUS' | DWARF BURNING BUSH | 3 GAL. | |
| Hm | 52 | HYDRANGEA ABORESCENS 'ANNABELLE' | ANNABELLE HYDRANGEA | 3 GAL. | |
| Mp | 33 | MYRTICA PENSYLVANICA | BARRYBERRY | 3 GAL. | |
| Sj | 277 | SPIREA JAPONICA 'GOLDFLAME' | GOLDFLAME SPIREA | 3 GAL. | |
| Sv | 8 | SYRINGA VULGARIS | COMMON LILAC | 3 GAL. | |
| 566 | | | | | |
| CONIFEROUS SHRUBS | | | | | |
| Ji | 69 | JUNIPERUS SABINA | SABINA JUNIPER | 3 GAL. | |
| Jc | 82 | JUNIPERUS CHINENSIS 'FAIRVIEW' | FAIRVIEW JUNIPER | 200cm | |
| 154 | | | | | |
| PERENNIALS & GRASSES | | | | | |
| Sz | 160 | SCHIZACHYRIUM SCOPARIUM | LITTLE BLUE STEM | 1 GAL. | |
| co | 702 | CALAMAGROSTIS ACUTIFLORA | KARL FORESTER | 1 GAL. | |
| hs | 128 | HEMEROCALLIS 'STELLA D'RO' | DAYLILY 'STELLA D'RO' | 1 GAL. | |
| 968 | | | | | |

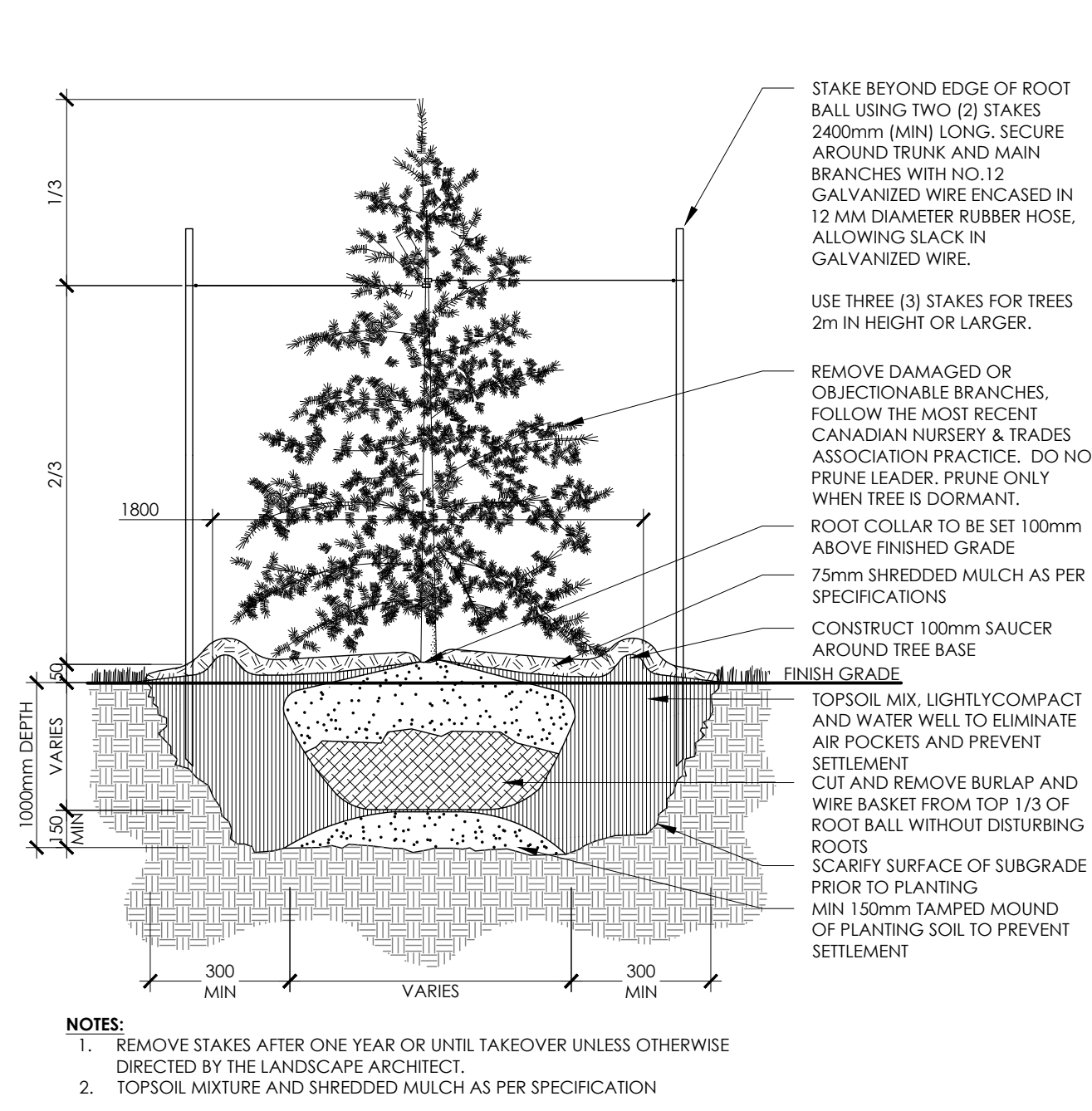
| | |
|---|---|
| PROJECT DEVELOPER NORTH AMERICAN DEVELOPMENT GROUP 2851 John Street, Suite One Markham, Ontario L3R 9P7 Tel: (905) 477-9200 E-Mail: vmccrum@nadg.com | ARCHITECT RLA ARCHITECTURE RODERICK LAHEY ARCHITECT INC. 56 Beech Street Ottawa, ON K1S 3J6 Tel: (613) 724-9932 • Fax: (613) 724-1209 E-Mail: rlaarchitect.com |
| SURVEYOR FAIRHALL, MOFFATT & WOODLAND LIMITED 100-600 TERRY FOX DRIVE KANATA, ONTARIO K2L 4B6 Tel: (613) 591-2580 • Fax: (613) 591-1495 Email: info@fmw.on.ca | CIVIL ENGINEER BI GROUP 400-333 Preston Street Ottawa ON K1S 5N4 Canada Tel: (613)225-1311 Email: dyanmoulopoulos@BGroup.com |
| GEOTECHNICAL ENGINEER paterson group 154 Colomade Road South Ottawa, Ontario, K2E 7J5 Tel: (613)226-7381 Email: DGibert@Patersongroup.ca | TRANSPORTATION ENGINEER D. J. Hajpenny & Associates Ltd. Consulting Transportation Engineers P. O. Box 774, Monrovia, ON H4M 1A7 Tel: (613) 692-8662 • Fax: (613) 692-1945 Email: davidj@hajpenny.com |

#18424

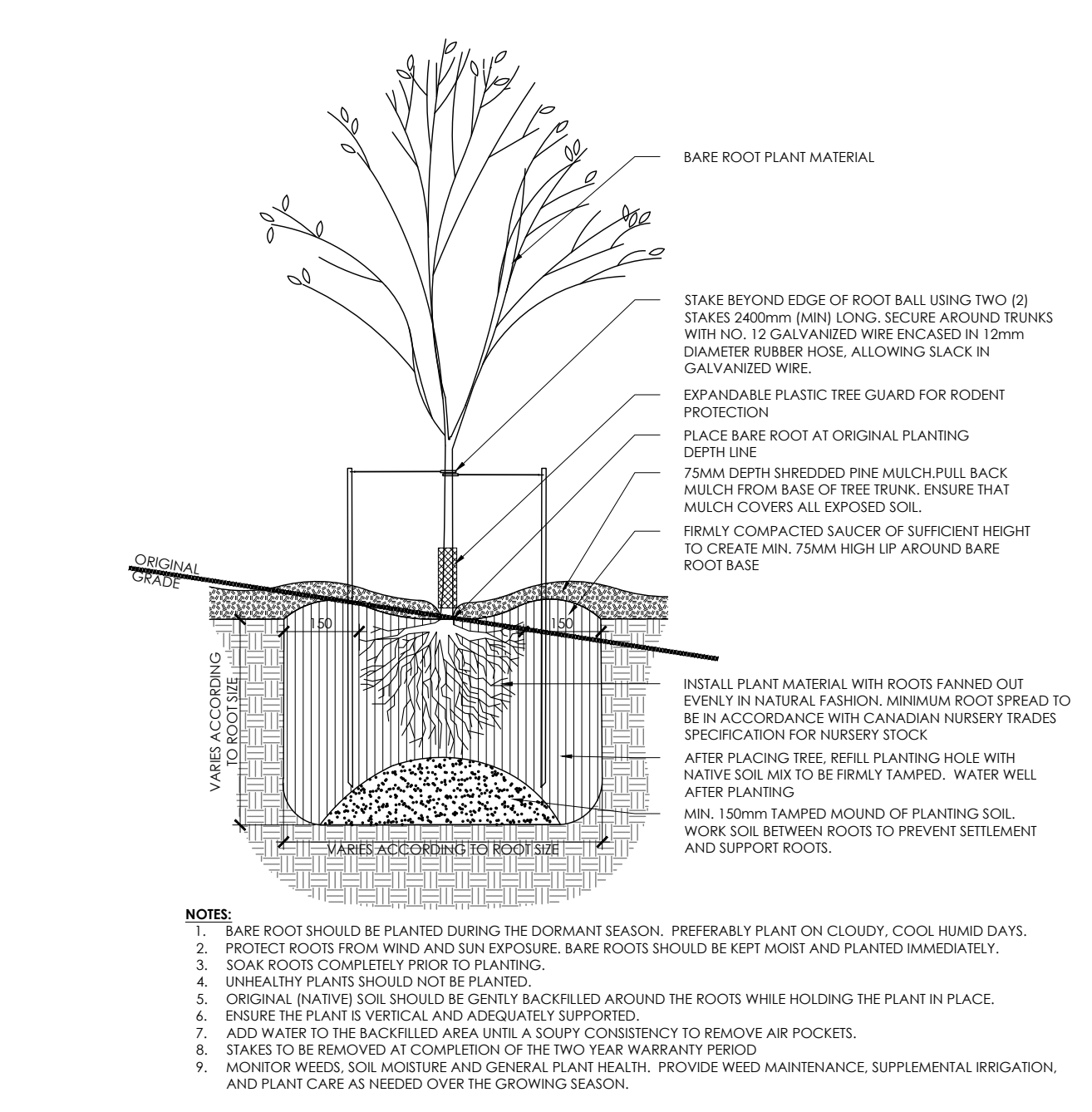
Contractor shall check all dimensions on the work and report any discrepancy to the Landscape Architect before proceeding. All drawings and specifications are the property of the Landscape Architect and must be returned at the completion of the work. This drawing is not to be used for construction until signed by the Landscape Architect.



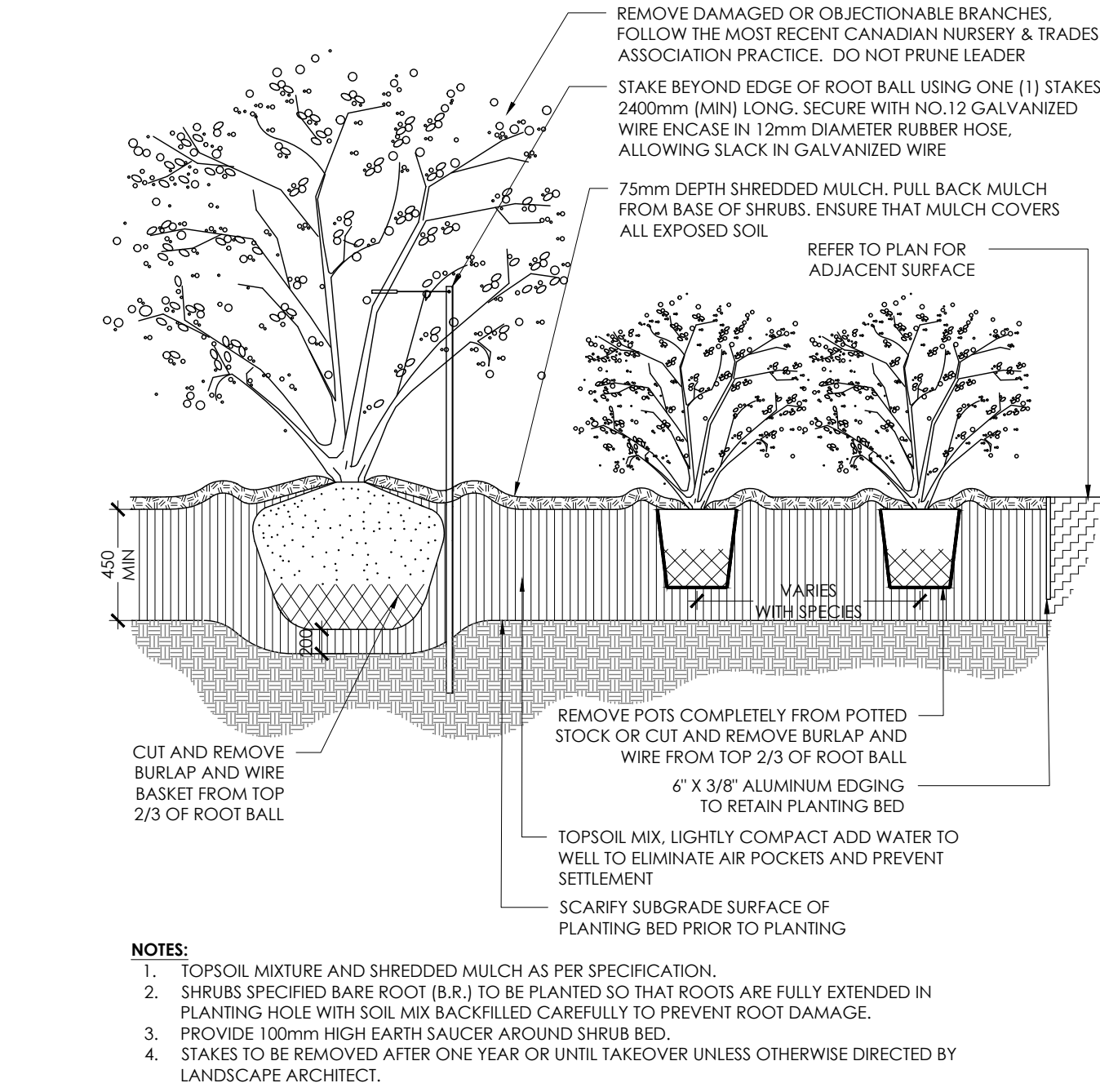
1 DECIDUOUS TREE PLANTING
N.T.S.



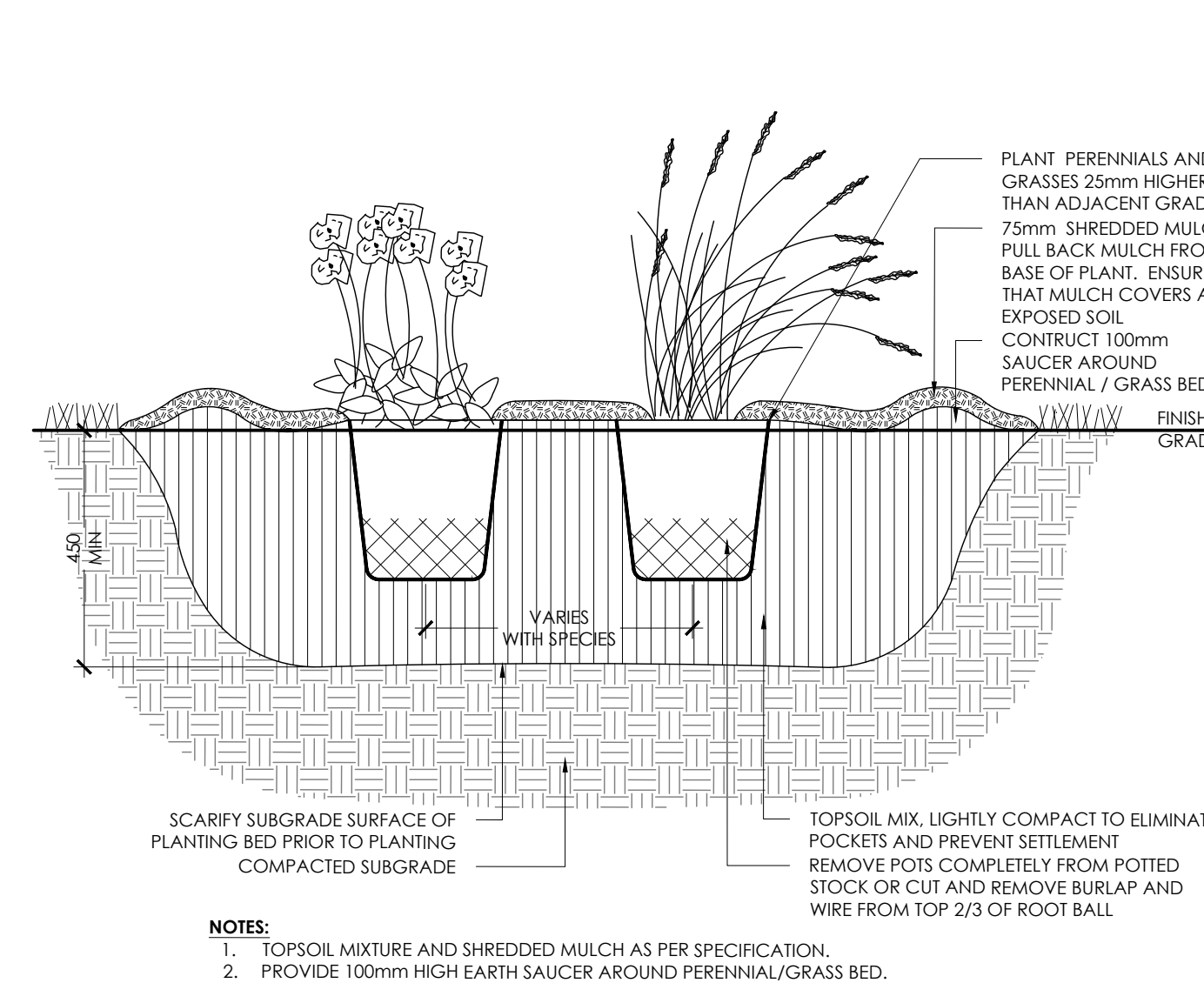
2 CONIFEROUS TREE PLANTING
N.T.S.



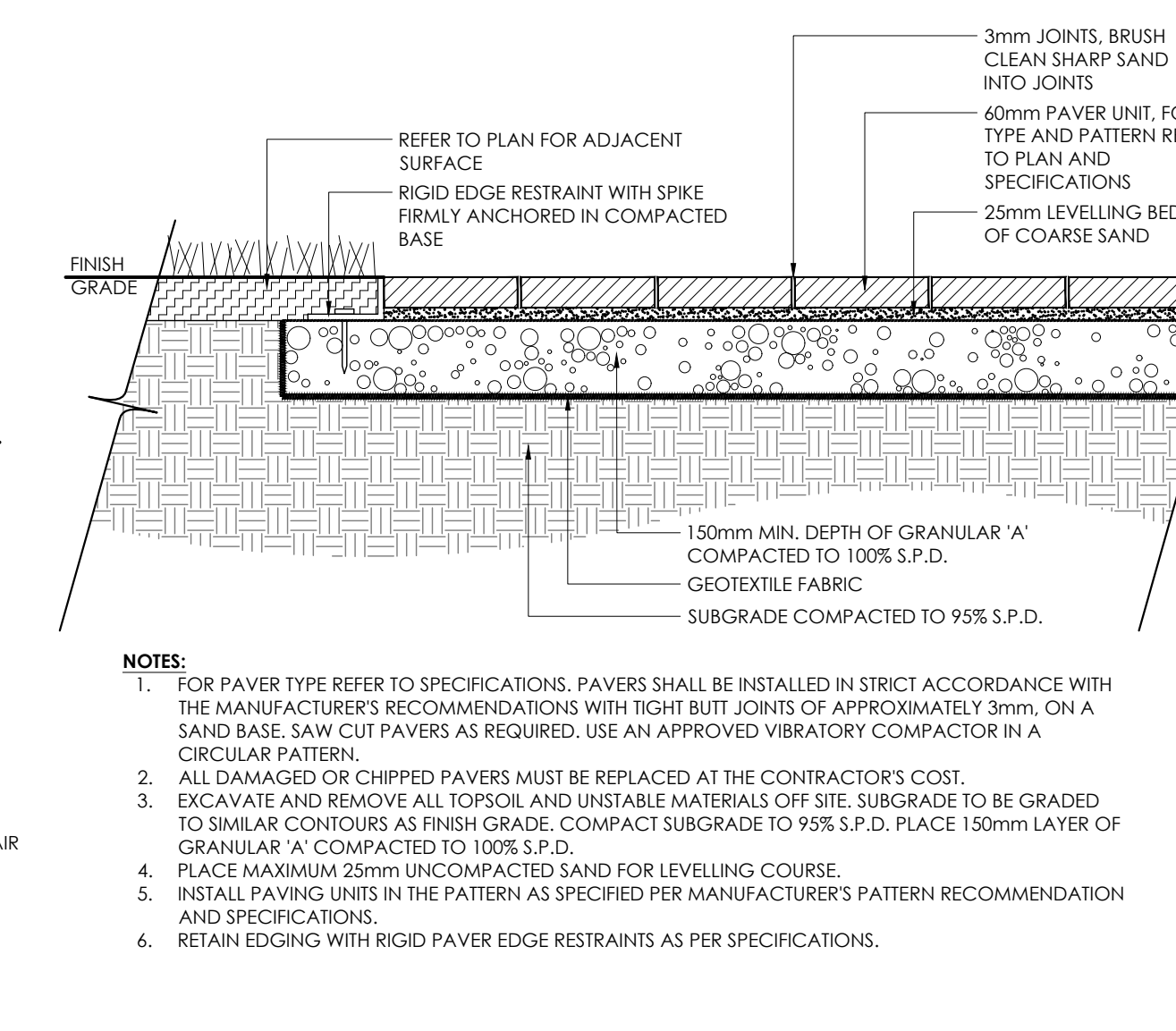
3 DECIDUOUS BARE ROOT PLANTING
N.T.S.



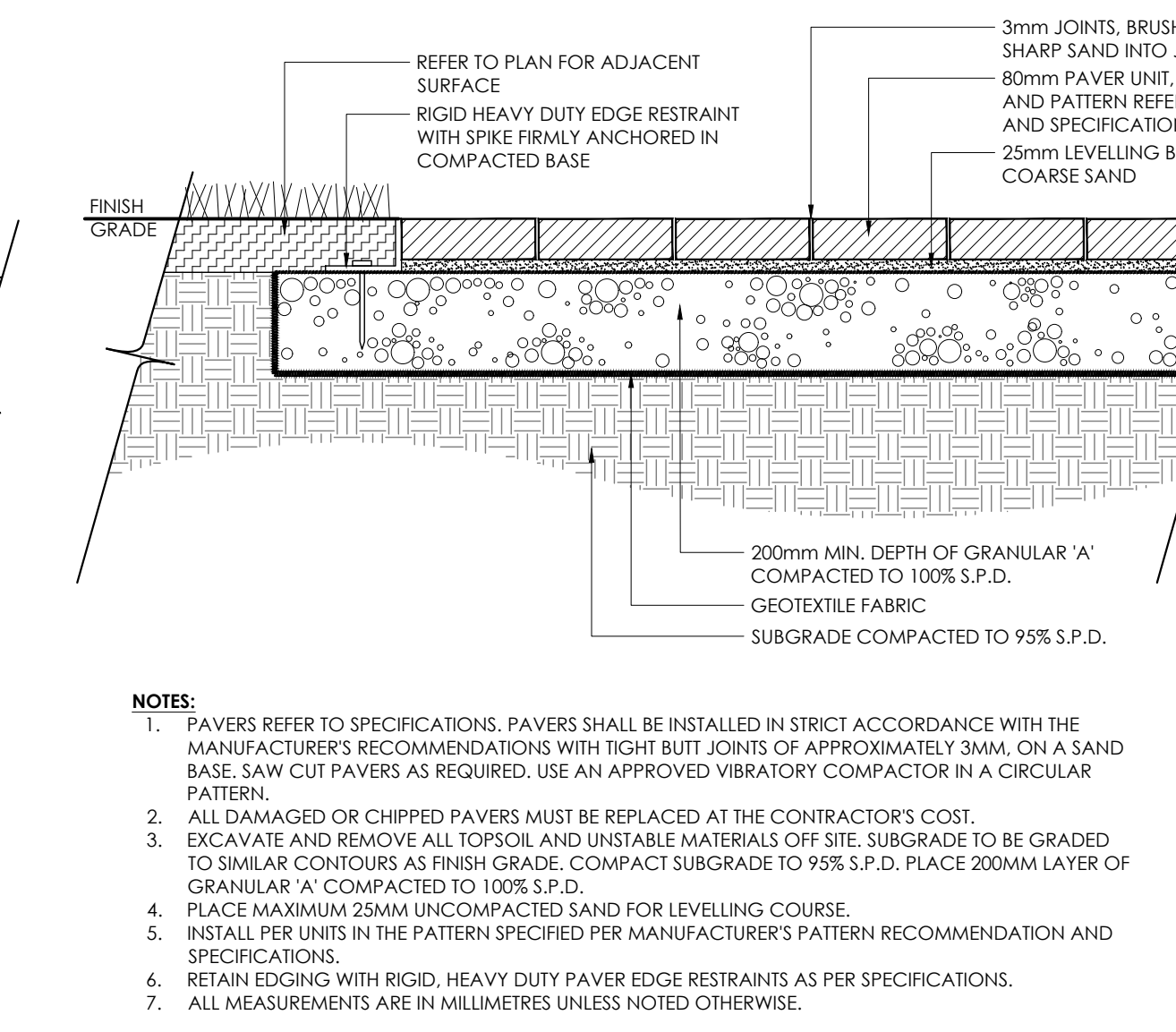
4 SHRUB BED PLANTING
N.T.S.



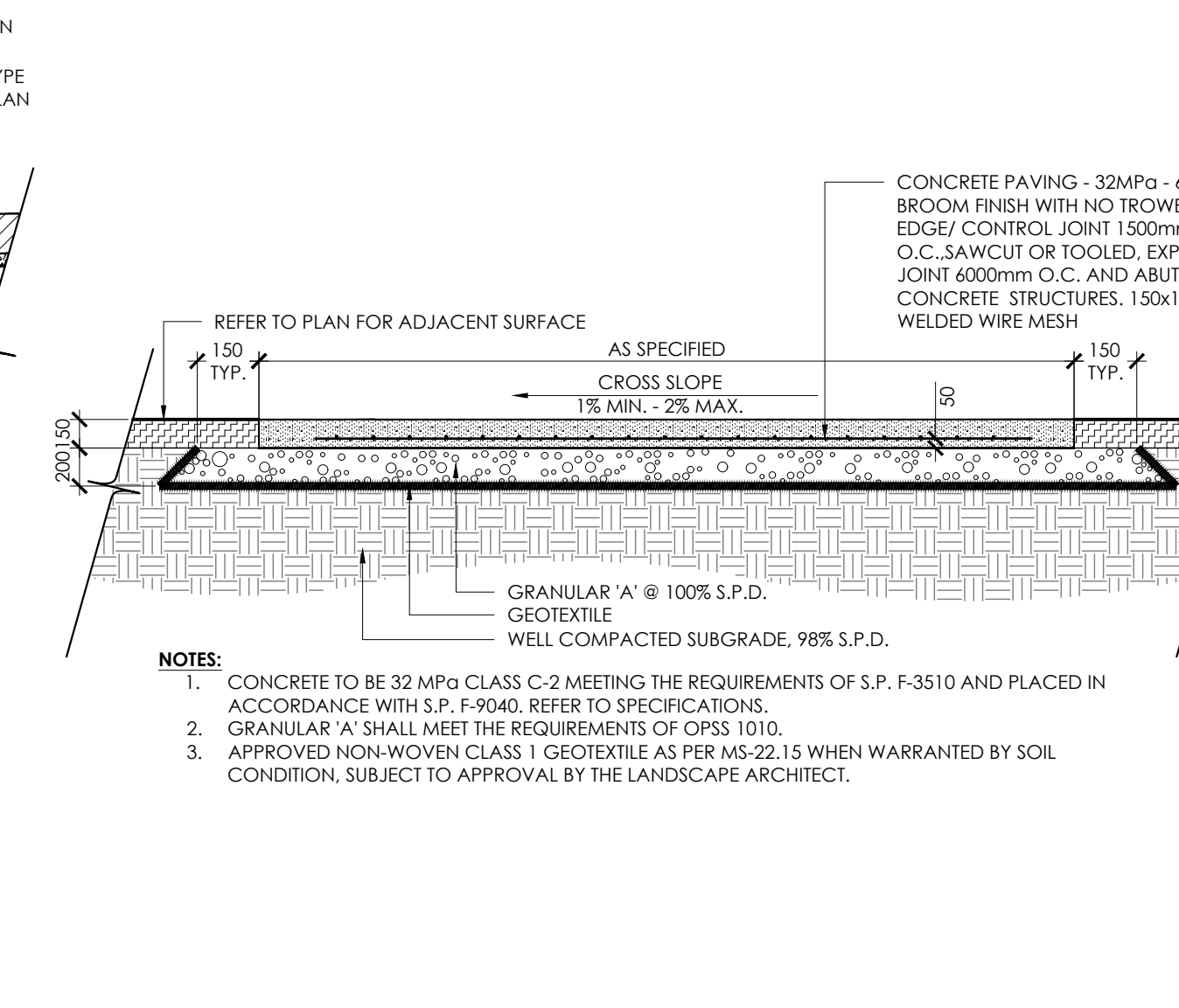
5 PERENNIAL AND ORNAMENTAL GRASS PLANTING
N.T.S.



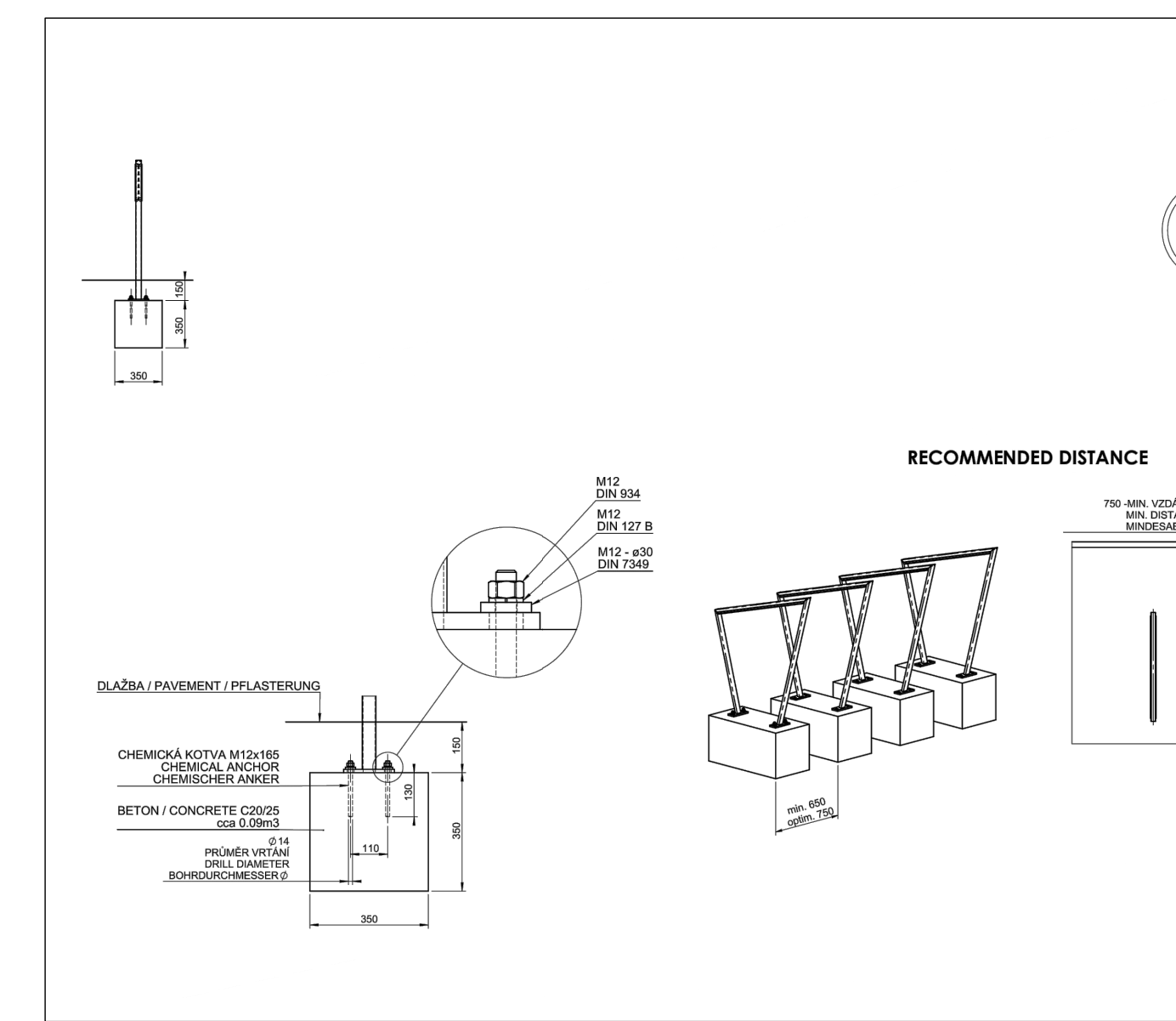
6 LIGHT DUTY UNIT PAVING
N.T.S.



7 HEAVY DUTY UNIT PAVING
N.T.S.

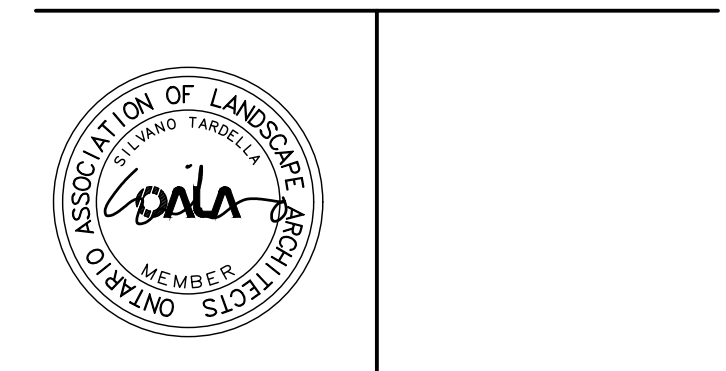


8 LIGHT DUTY CONCRETE PAVING
N.T.S.



9 BIKE RACK
N.T.S.

| | | |
|---------------------|--|------------|
| 8 | Issued for Third Submission | Sep. 28/21 |
| 7 | Issued for Coordination | Aug. 30/21 |
| 6 | Issued for Second Submission | Jun. 28/21 |
| 5 | Issued for First Submission | Feb. 04/21 |
| 4 | Issued for Client Review | Dec. 18/20 |
| 3 | Lighting Plan Issued for Review | Dec. 16/20 |
| 2 | Preliminary Concept Issued for Review | Nov. 26/20 |
| 1 | Schematic Landscape Plan Issued for Review | Nov. 18/20 |
| No. | Description | Date |
| Revision | | |
| City Approval Stamp | | |



NAK design strategies

1285 WELLINGTON STREET WEST, OTTAWA, ON K1Y 3A8 CANADA
T 613.237.2345 F 613.237.6423 NAKDESIGNSTRATEGIES.COM

Project

35 Huntmar Drive & 21 Huntmar Drive

Title

DETAILS

Date September 2021 Sheet

Scale N.T.S.

Drawn JC/SH

Checked IM

Job No. 20-173

D-01

#18424