

35 HUNTMAR DRIVE & 21 HUNTMAR DRIVE



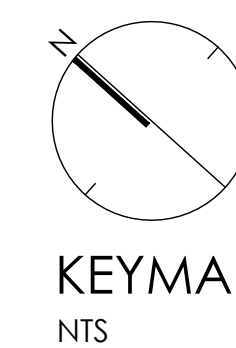
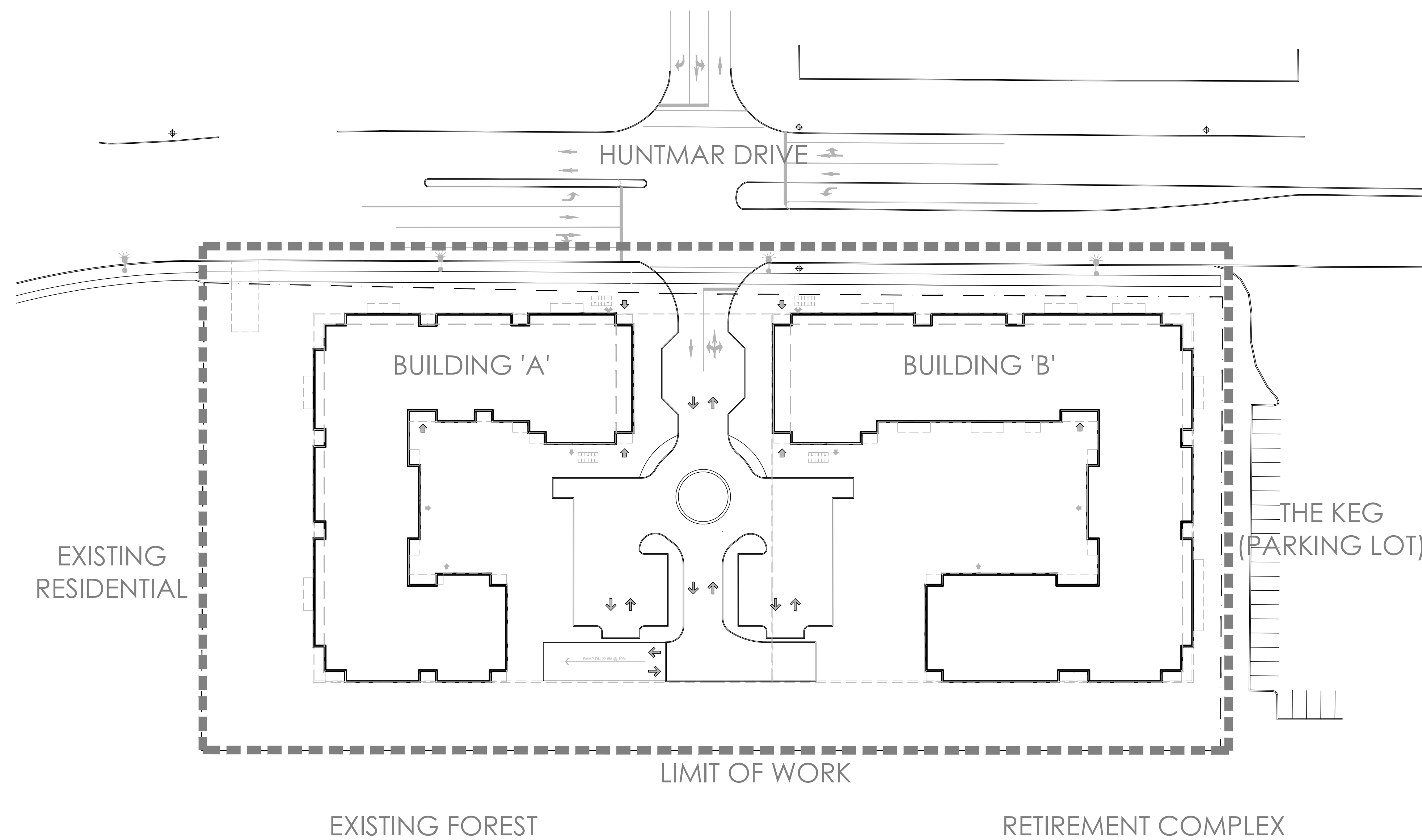
NAK PROJECT NO. 20-173

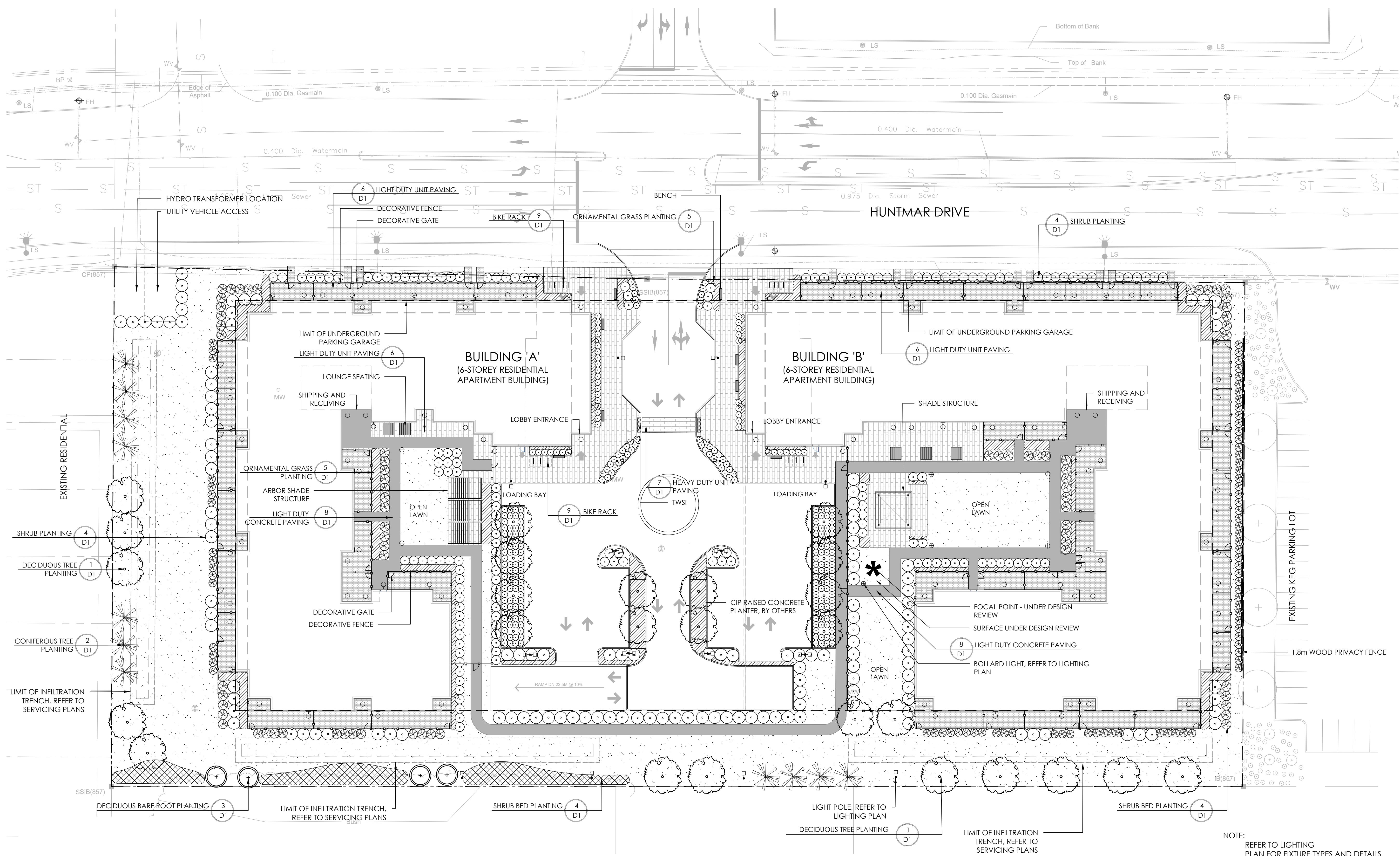
35 HUNTMAR DRIVE
&
21 HUNTMAR DRIVE

ISSUED FOR SECOND SUBMISSION
JUNE 28th, 2021

LIST OF DRAWINGS:

NAK	-	
L01	-	LANDSCAPE PLAN
L02	-	PLANTING PLAN
DETAILS	-	
D01	-	DETAILS



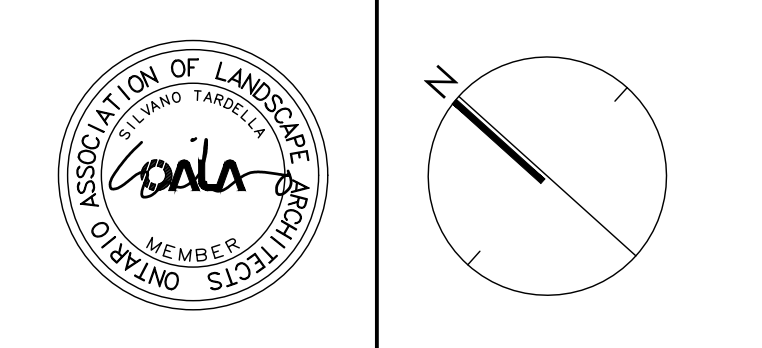


Contractor shall check all dimensions on the work and report any discrepancy to the Landscape Architect before proceeding. All drawings and specifications are the property of the Landscape Architect and must be returned at the completion of the work. This drawing is not to be used for construction until signed by the Landscape Architect.



- LEGEND**
- PROPERTY LINE
 - LIMIT OF UNDERGROUND PARKING GARAGE
- FENCING**
- 1.2m HEIGHT DECORATIVE FENCE
 - 1.8m PRIVACY FENCE
- PLANTING**
- EXISTING TREE
 - DECIDUOUS TREE
 - CONIFEROUS TREE
 - RESTORATION PLANTING (SHRUBS + TREE WHIPS)
 - DECIDUOUS SHRUB
 - CONIFEROUS SHRUB
 - GRASSES/PERENNIALS
- SURFACING**
- C.I.P CONCRETE PAVING
 - UNIT PAVING - PRIVATE PATIO - 10X20
 - UNIT PAVING - LARGE PLANK - 20X40
- LIGHTING (REFER TO LIGHTING PLAN FOR DETAILS)**
- BOLLARD LIGHT
 - TWO FIXTURE LIGHT POLE
 - ONE FIXTURE LIGHT POLE
- AMENITIES**
- BENCH
 - LOUNGE SEATING
 - BIKE RACKS
 - ARBOR SHADE STRUCTURE
 - SHADE STRUCTURE
 - FOCAL POINT (UNDER DESIGN REVIEW)
- DETAIL KEY**
- DETAIL NO.
 - SHEET NO.

6	Issued for Second Submission	Jun. 28/21
5	Issued for First Submission	Feb. 04/21
4	Issued for Client Review	Dec. 18/20
3	Lighting Plan Issued for Review	Dec. 16/20
2	Preliminary Concept Issued for Review	Nov. 26/20
1	Schematic Landscape Plan Issued for Review	Nov. 18/20
No.	Description	Date
Revision		
City Approval Stamp		



NAK design strategies
 1285 WELLINGTON STREET WEST, OTTAWA, ON K1Y 3A8 CANADA
 T 613.237.2345 F 613.237.4423 NAKDESIGNSTRATEGIES.COM
 Project

PROJECT DEVELOPER NORTH AMERICAN DEVELOPMENT GROUP 2851 John Street, Suite One Northham, Ontario L3R 5B7 Tel: (905) 477-9200 E-Mail: vmccrum@nadg.com	ARCHITECT RIA ARCHITECTURE RODERICK LAHEY ARCHITECT INC. 56 Beech Street Ottawa, ON K1S 3J6 Tel: (613) 724-9932 • Fax: (613) 724-1209 E-Mail: riaarchitecture.ca
SURVEYOR FAIRHALL, MOFFATT & WOODLAND LIMITED 100-600 TERRY FOX DRIVE KANATA, ONTARIO K2L 4B6 Tel: (613) 591-2580 • Fax: (613) 591-1495 Email: info@fmw.on.ca	CIVIL ENGINEER BI GROUP 400-333 Preston Street Ottawa ON K1S 5N4 Canada Tel: (613) 225-1311 Email: dyananopoulos@BIGroup.com
GEOTECHNICAL ENGINEER paterson group 154 Colborne Road South Ottawa, Ontario, K2E 7J5 Tel: (613) 226-7381 Email: DGilbert@Patersongroup.ca	TRANSPORTATION ENGINEER D. J. Halpenny & Associates Ltd. Consulting Transportation Engineers P. O. Box 774, Maricoff, ON K4M 1A7 Tel: (613) 692-8662 • Fax: (613) 692-1945 Email: david@djhlpenny.com

35 Huntmar Drive & 21 Huntmar Drive

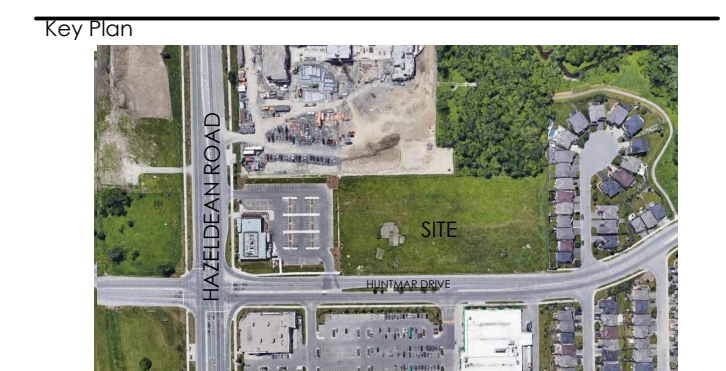
Title: LANDSCAPE PLAN

Date: JUNE 2021
 Scale: 1:300
 Drawn: EJ/JC
 Checked: LS
 Job No.: 20-173

Sheet: L-01

NOTE: REFER TO LIGHTING PLAN FOR FIXTURE TYPES AND DETAILS

Contractor shall check all dimensions on the work and report any discrepancy to the Landscape Architect before proceeding. All drawings and specifications are the property of the Landscape Architect and must be returned at the completion of the work. This drawing is not to be used for construction until signed by the Landscape Architect.



- PROPERTY LINE**
 - - - - - LIMIT OF UNDERGROUND PARKING GARAGE
- FENCING**
 - - - - - 1.2m HEIGHT DECORATIVE FENCE
 - - - - - 1.8m PRIVACY FENCE

- PLANTING**
- (+) EXISTING TREE
 - (○) DECIDUOUS TREE
 - (*) CONIFEROUS TREE
 - (○) RESTORATION PLANTING (SHRUBS + TREE WHIPS)
 - (○) DECIDUOUS SHRUB
 - (*) CONIFEROUS SHRUB
 - (○) GRASSES/PERENNIALS

- SURFACING**
- (■) C.I.P. CONCRETE PAVING
 - (■) UNIT PAVING - PRIVATE PATIO - 10X20
 - (■) UNIT PAVING - LARGE PLANK - 20X40

- LIGHTING (REFER TO LIGHTING PLAN FOR DETAILS)**
- (⊙) BOLLARD LIGHT
 - (□) TWO FIXTURE LIGHT POLE
 - (○) ONE FIXTURE LIGHT POLE

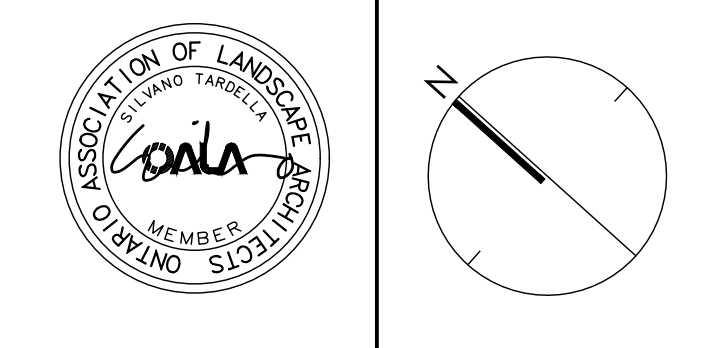
- AMENITIES**
- (■) BENCH
 - (■) LOUNGE SEATING
 - (■) BIKE RACKS
 - (■) ARBOR SHADE STRUCTURE
 - (■) SHADE STRUCTURE
 - (*) FOCAL POINT (UNDER DESIGN REVIEW)

- DETAIL KEY**
- (1) DETAIL NO.
 - (D1) SHEET NO.
 - (XX) SHRUB SPECIES
 - (00) QUANTITY

No.	Description	Date
6	Issued for Second Submission	Jun. 28/21
5	Issued for First Submission	Feb. 04/21
4	Issued for Client Review	Dec. 18/20
3	Lighting Plan Issued for Review	Dec. 14/20
2	Preliminary Concept Issued for Review	Nov. 24/20
1	Schematic Landscape Plan Issued for Review	Nov. 18/20

Revision

City Approval Stamp



NAK design strategies

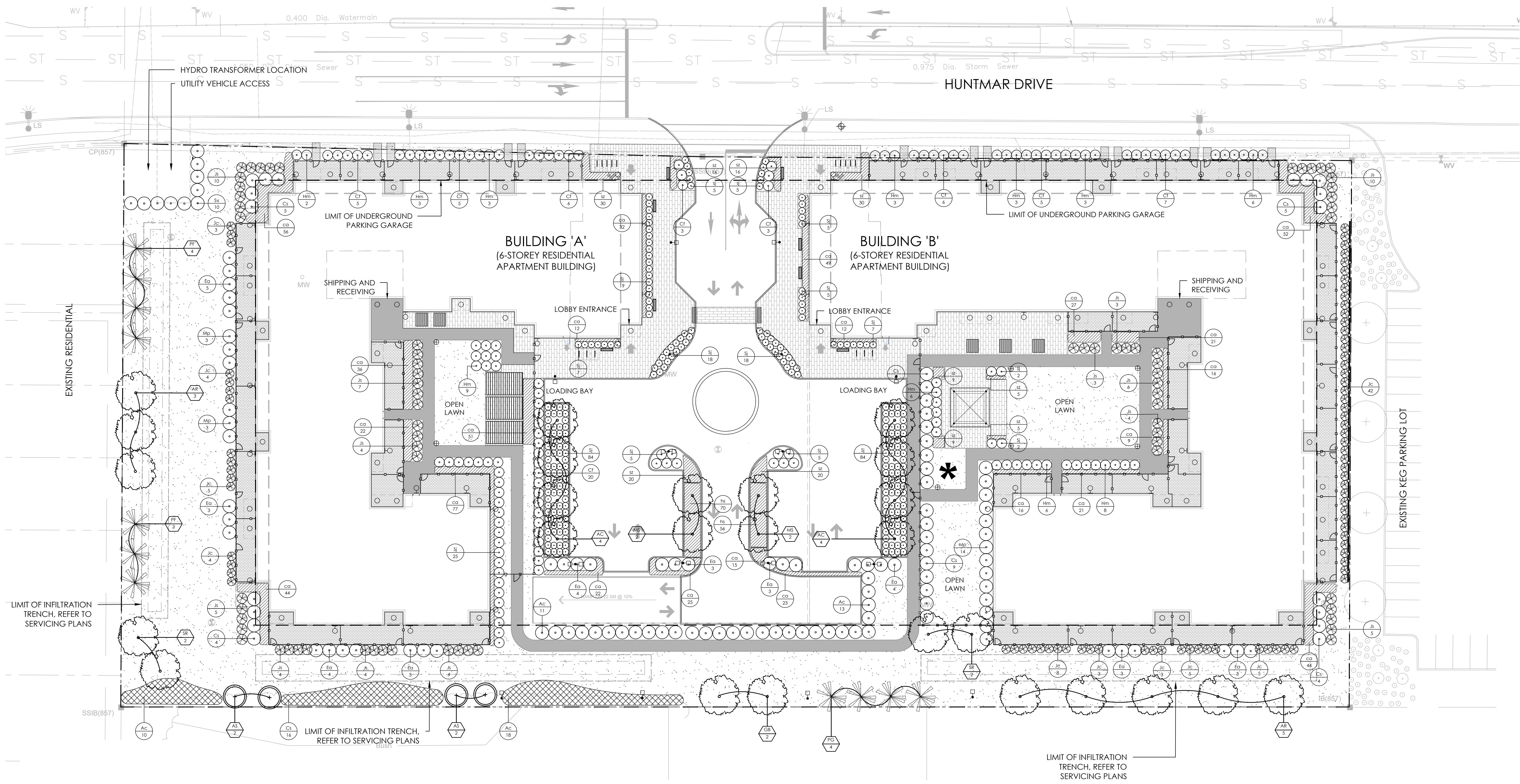
1285 WELLINGTON STREET WEST, OTTAWA, ON K1Y 3A8 CANADA
 T 613.237.2345 F 613.237.6423 NAKDESIGNSTRATEGIES.COM

35 Huntmar Drive & 21 Huntmar Drive

PLANTING PLAN

Date: JUNE 2021 Sheet: L-02

Scale: 1:300
 Drawn: EJ/JC
 Checked: LS
 Job No.: 20-173

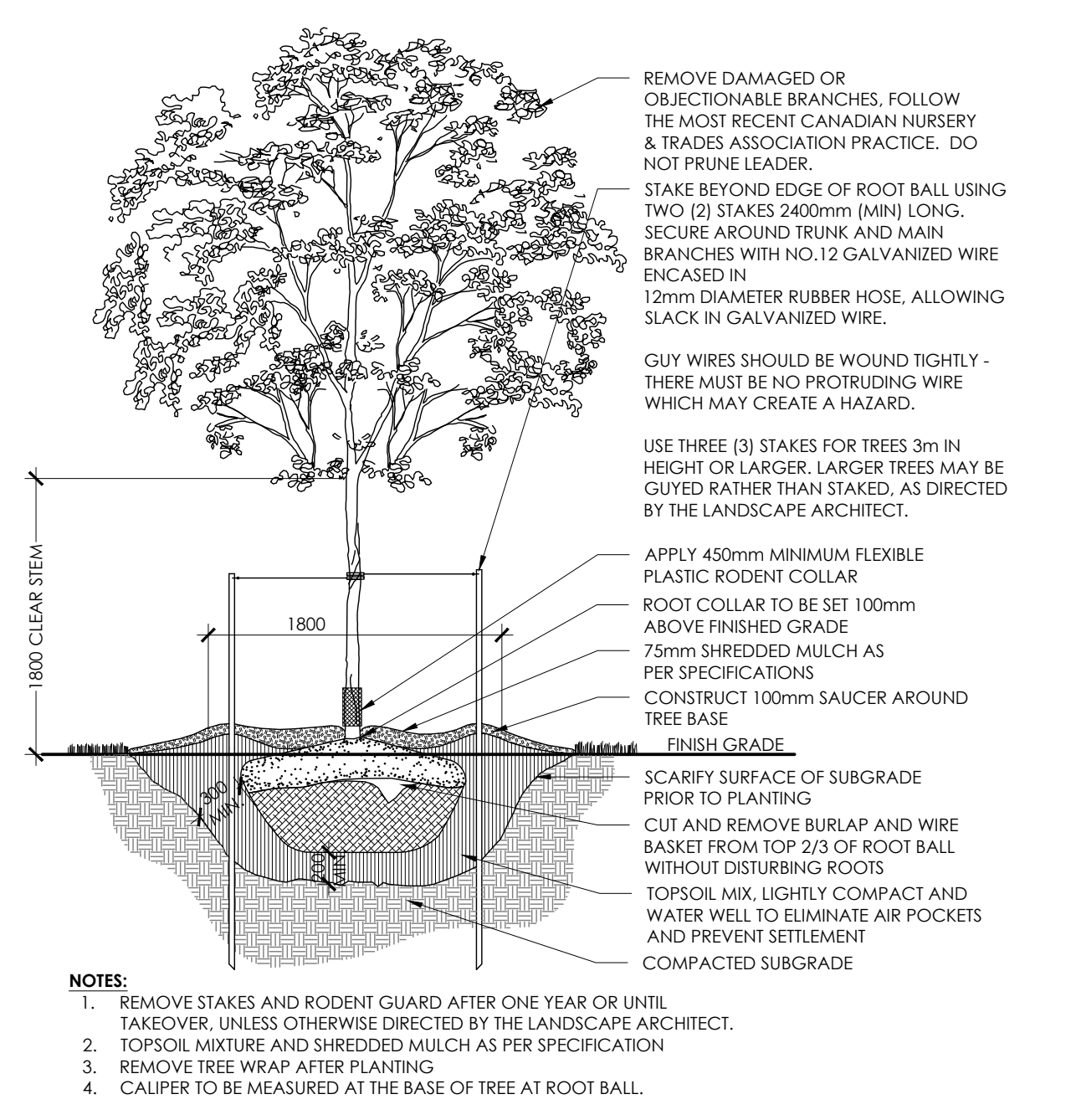


PLANT LIST

KEY	QTY.	BOTANICAL NAME	COMMON NAME	CAL/HT.	ROOT
				(mm)	(mm)
SMALL DECIDUOUS TREES (<7.5m)					
AC	8	AMELANCHER CANADENSIS	SERVICEBERRY	60	B&B
MS	12	MALUS 'SNOWDRIFT'	SNOWDRIFT CRABAPPLE	60	B&B
MEDIUM DECIDUOUS TREES (7.5m-15m)					
SR	4	SYRINGA REICULATA	JAPANESE LILAC	60	B&B
LARGE DECIDUOUS TREES (>15m)					
AR	8	ACER RUBRUM	RED MAPLE	60	B&B
GB	10	GINKGO BILOBA	GINKGO	60	B&B
CONIFEROUS TREES					
PF	7	PINUS STROBUS 'FASTIGIATA'	COLUMNAR EASTERN WHITE PINE	200	B&B
PG	4	PICEA GLAUCA	WHITE SPRUCE	200	B&B
TT					
DECIDUOUS WHIPS					
AS	4	ACER SACCHARUM	SUGAR MAPLE	150cm ht.	B.R.
DECIDUOUS SHRUBS					
Ac	52	AMELANCHER CANADENSIS	SERVICEBERRY	3 GAL.	
Cf	40	CORNUS SERICIA 'FARROW'	ARCTIC FIRE DOGWOOD	3 GAL.	
Cs	52	CORNUS SERICIA	RED OSIER DOGWOOD	3 GAL.	
Ea	35	EUONYMUS ALATUS 'COMPACTUS'	DWARF BURNING BUSH	3 GAL.	
Hm	52	HYDRANGEA ABORESCENS 'ANNABELLE'	ANNABELLE HYDRANGEA	3 GAL.	
Mp	20	MYRICA PENSYLVANICA	BARBERRY	3 GAL.	
Sj	296	SPIREA JAPONICA 'GOLDFLAME'	GOLDFLAME SPIREA	3 GAL.	
Sv	10	SYRINGA VULGARIS	COMMON LILAC	3 GAL.	
57					
CONIFEROUS SHRUBS					
Ji	62	JUNIPERUS SABINA	SABINA JUNIFER	3 GAL.	
Jc	82	JUNIPERUS CHINENSIS 'FAIRVIEW'	FAIRVIEW JUNIFER	200cm	
144					
PERENNIALS & GRASSES					
Sz	160	SCHIZACHYRIUM SCOPARIUM	LITTLE BLUE STEM	1 GAL.	
ca	682	CALAMAGROSTIS ACUTIFLORA	KARL FORESTER	1 GAL.	
fs	128	HEMEROCALLIS 'STELLA D'RO'	DAYLILY 'STELLA D'RO'	1 GAL.	
968					

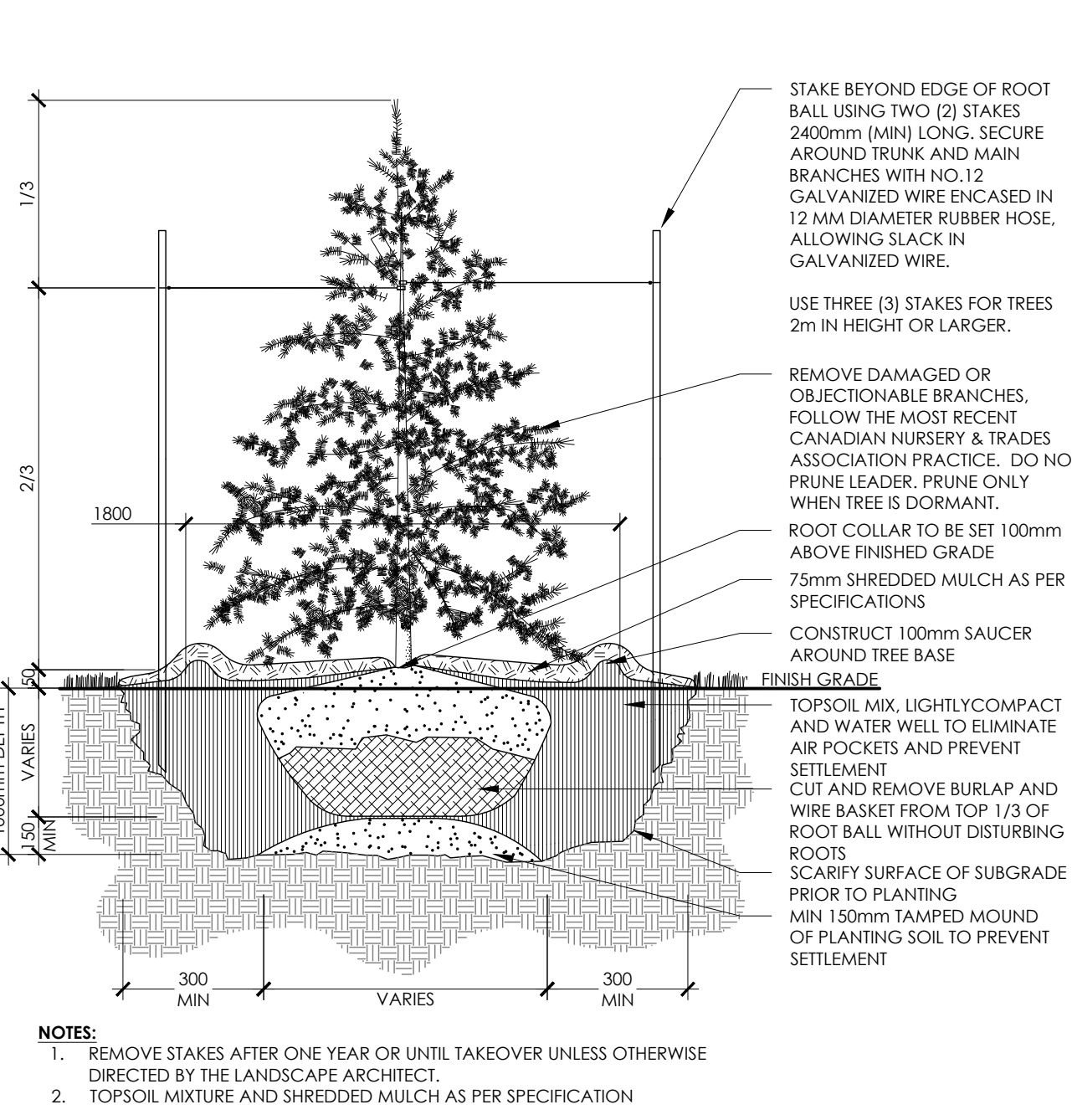
PROJECT DEVELOPER NORTH AMERICAN DEVELOPMENT GROUP 2851 John Street, Suite One Markham, Ontario L3R 9P7 Tel: (905) 477-9200 E-Mail: vmccrum@nadg.com	ARCHITECT RLA ARCHITECTURE RODERICK LAHEY ARCHITECT INC. 56 Beech Street Ottawa, ON K1S 3J6 Tel: (613) 724-9932 • Fax: (613) 724-1209 E-Mail: rlaarchitecture.ca
SURVEYOR FAIRHALL, MOFFATT & WOODLAND LIMITED 100-600 TERRY FOX DRIVE KANATA, ONTARIO K2L 4B6 Tel: (613) 591-2580 • Fax: (613) 591-1495 Email: info@fmw.on.ca	CIVIL ENGINEER BI GROUP 400-333 Preston Street Ottawa ON K1S 5N4 Canada Tel: (613)225-1311 Email: dyanmoulopoulos@BGroup.com
GEOTECHNICAL ENGINEER paterson group 154 Colomade Road South Ottawa, Ontario, K2E 7J5 Tel: (613) 226-7381 Email: DGibert@Patersongroup.ca	TRANSPORTATION ENGINEER D. J. Hajpenny & Associates Ltd. Consulting Transportation Engineers P. O. Box 774, Monrovia, ON H4M 1A7 Tel: (613) 692-8662 • Fax: (613) 692-1945 Email: david@dhajpenny.com

Contractor shall check all dimensions on the work and report any discrepancy to the Landscape Architect before proceeding. All drawings and specifications are the property of the Landscape Architect and must be returned at the completion of the work. This drawing is not to be used for construction until signed by the Landscape Architect.



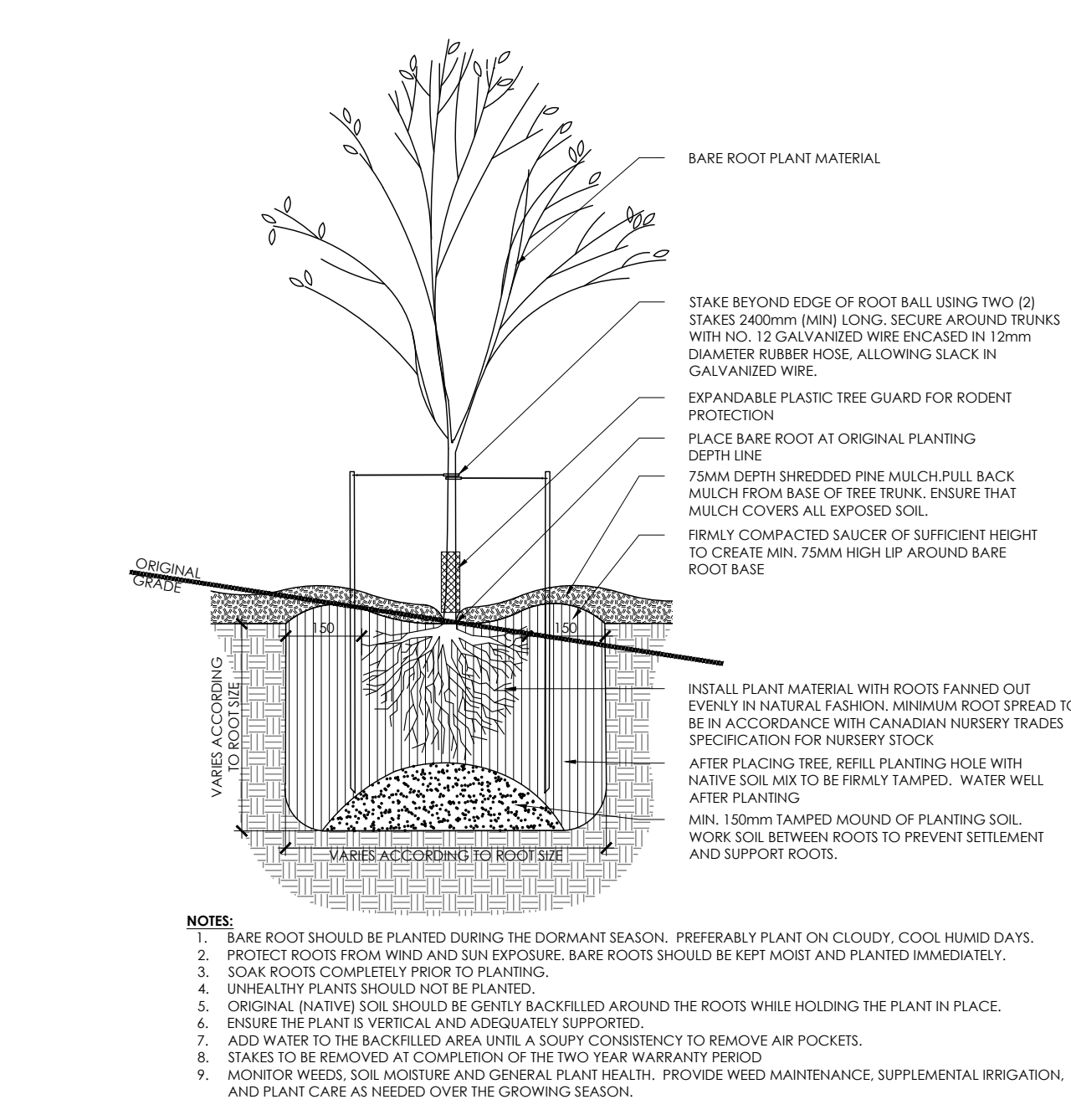
NOTES:
 1. REMOVE STAKES AND RODENT GUARD AFTER ONE YEAR OR UNTIL TAKEOVER, UNLESS OTHERWISE DIRECTED BY THE LANDSCAPE ARCHITECT.
 2. TOPSOIL MIXTURE AND SHREDDED MULCH AS PER SPECIFICATION
 3. REMOVE TREE WRAP AFTER PLANTING
 4. CALIPER TO BE MEASURED AT THE BASE OF TREE AT ROOT BALL.

1 DECIDUOUS TREE PLANTING
N.T.S.



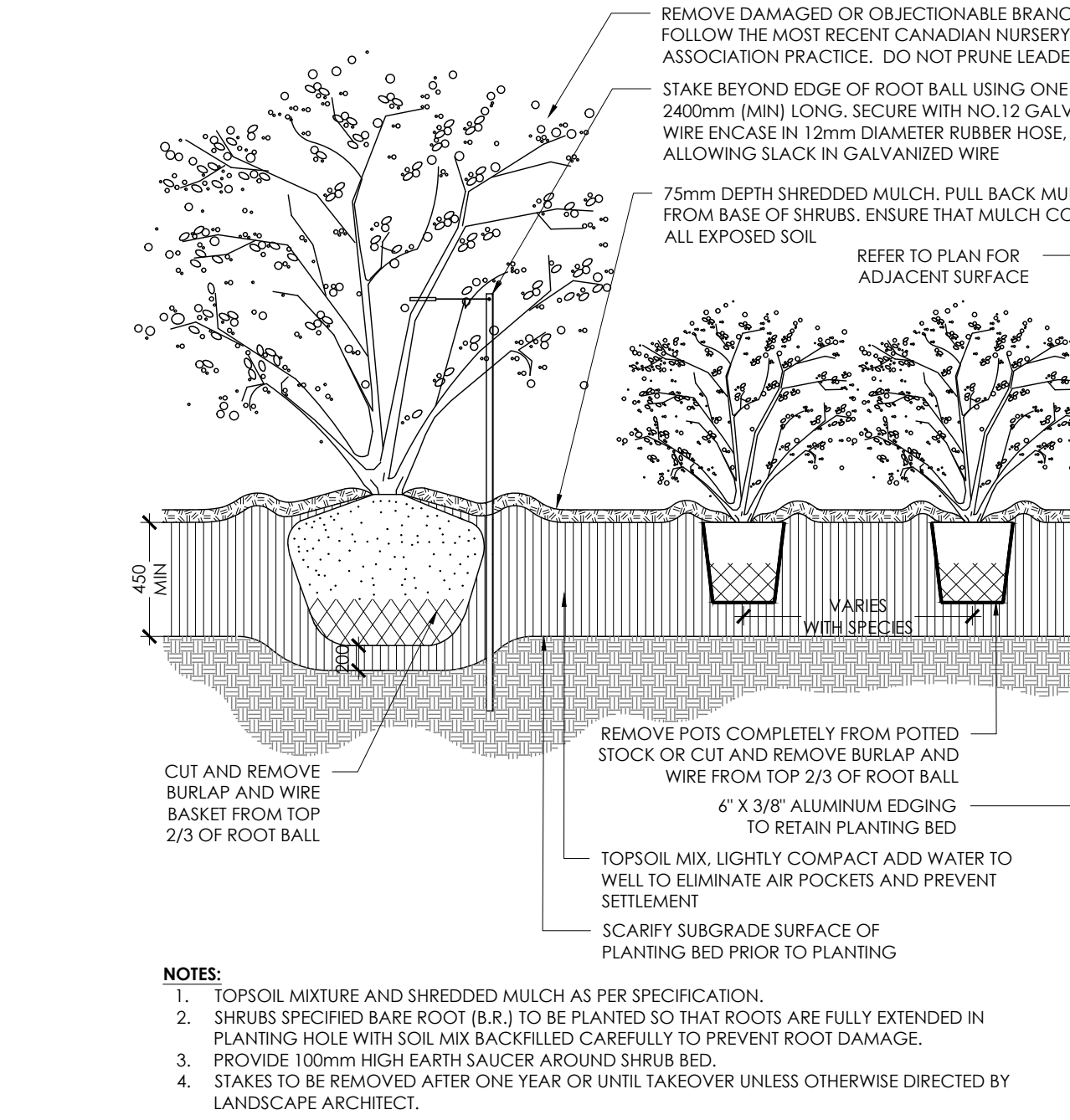
NOTES:
 1. REMOVE STAKES AFTER ONE YEAR OR UNTIL TAKEOVER UNLESS OTHERWISE DIRECTED BY THE LANDSCAPE ARCHITECT.
 2. TOPSOIL MIXTURE AND SHREDDED MULCH AS PER SPECIFICATION

2 CONIFEROUS TREE PLANTING
N.T.S.



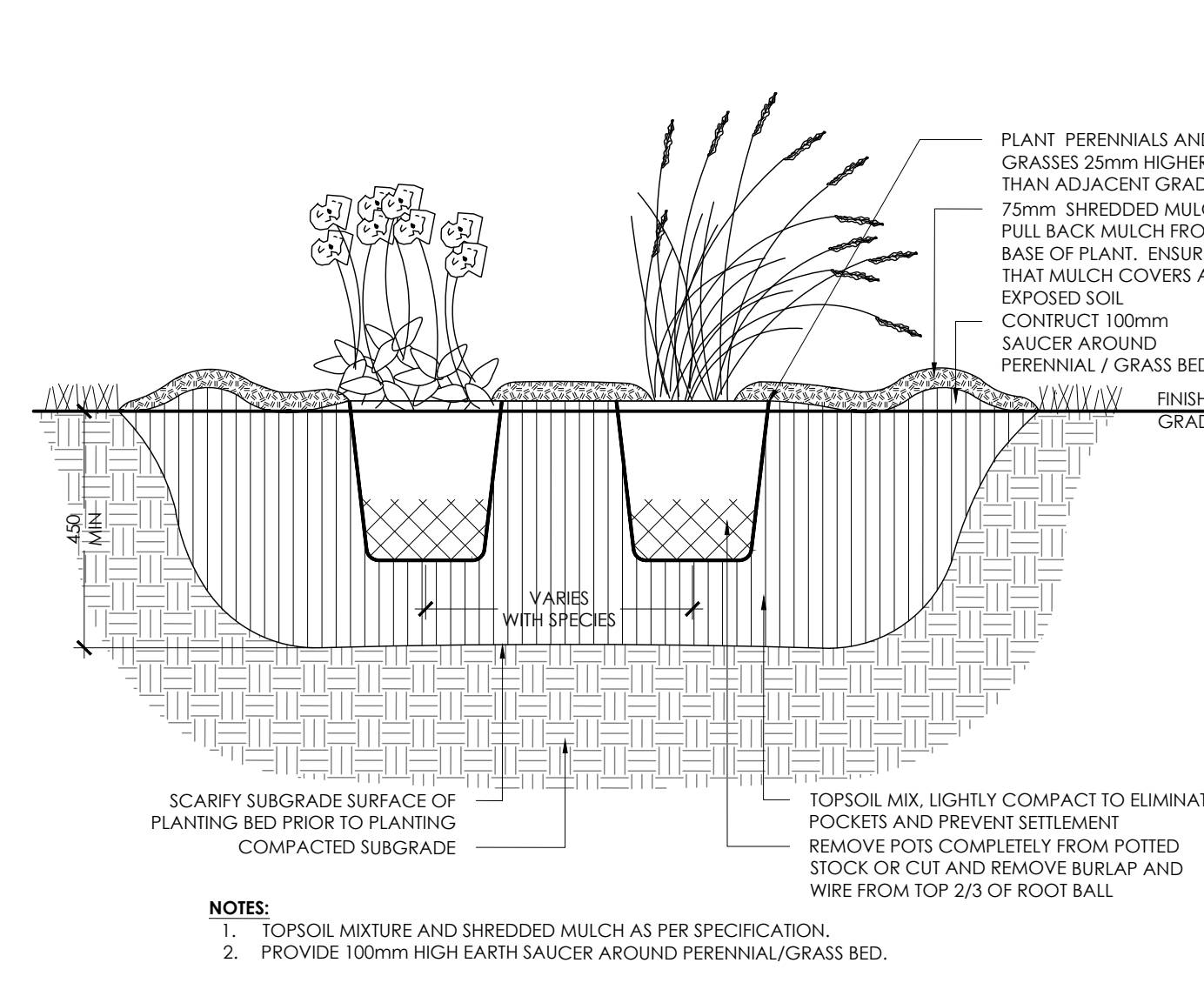
NOTES:
 1. BARE ROOT SHOULD BE PLANTED DURING THE DORMANT SEASON. PREFERABLY PLANT ON CLOUDY, COOL, HUMID DAYS.
 2. PROTECT ROOTS FROM WIND AND SUN EXPOSURE. BARE ROOTS SHOULD BE KEPT MOIST AND PLANTED IMMEDIATELY.
 3. SOAK ROOTS COMPLETELY PRIOR TO PLANTING.
 4. UNHEALTHY PLANTS SHOULD NOT BE PLANTED.
 5. ORIGINAL (NATIVE) SOIL SHOULD BE GENTLY BACKFILLED AROUND THE ROOTS WHILE HOLDING THE PLANT IN PLACE.
 6. ENSURE THE PLANT IS VERTICAL AND ADEQUATELY SUPPORTED.
 7. ADD WATER TO THE BACKFILL AREA UNTIL A SOFTY CONSISTENCY TO REMOVE AIR POCKETS.
 8. STAKES TO BE REMOVED AT COMPLETION OF THE TWO YEAR WARRANTY PERIOD.
 9. MONITOR WEEDS, SOIL MOISTURE AND GENERAL PLANT HEALTH. PROVIDE WEED MAINTENANCE, SUPPLEMENTAL IRRIGATION, AND PLANT CARE AS NEEDED OVER THE GROWING SEASON.

3 DECIDUOUS BARE ROOT PLANTING
N.T.S.



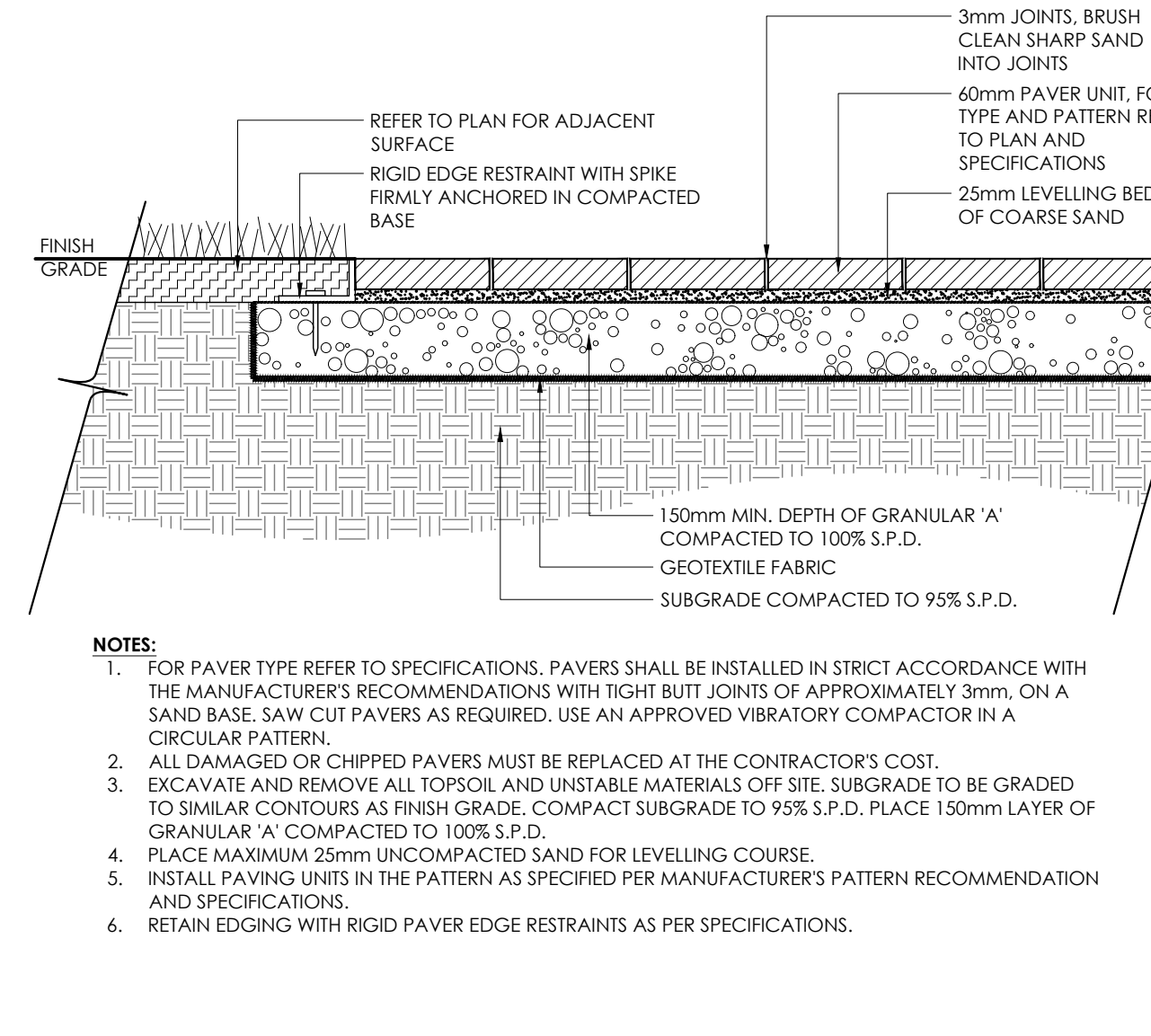
NOTES:
 1. TOPSOIL MIXTURE AND SHREDDED MULCH AS PER SPECIFICATION.
 2. SHRUBS SPECIFIED BARE ROOT (B.R.) TO BE PLANTED SO THAT ROOTS ARE FULLY EXTENDED IN PLANTING HOLE WITH SOIL MIX BACKFILLED CAREFULLY TO PREVENT ROOT DAMAGE.
 3. PROVIDE 100mm HIGH EARTH SAUCER AROUND SHRUB BED.
 4. STAKES TO BE REMOVED AFTER ONE YEAR OR UNTIL TAKEOVER UNLESS OTHERWISE DIRECTED BY LANDSCAPE ARCHITECT.

4 SHRUB BED PLANTING
N.T.S.



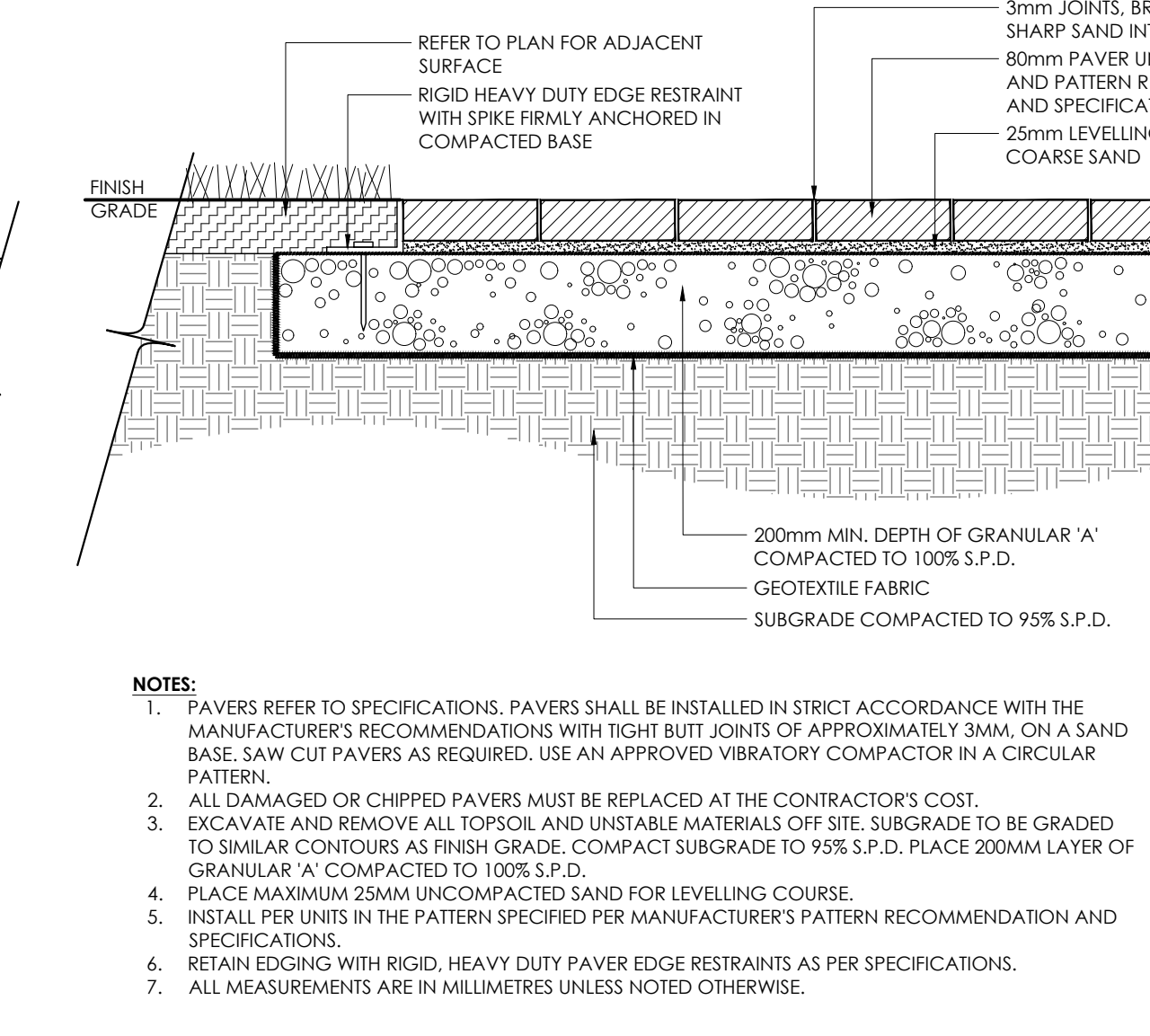
NOTES:
 1. TOPSOIL MIXTURE AND SHREDDED MULCH AS PER SPECIFICATION.
 2. PROVIDE 100mm HIGH EARTH SAUCER AROUND PERENNIAL/GRASS BED.

5 PERENNIAL AND ORNAMENTAL GRASS PLANTING
N.T.S.



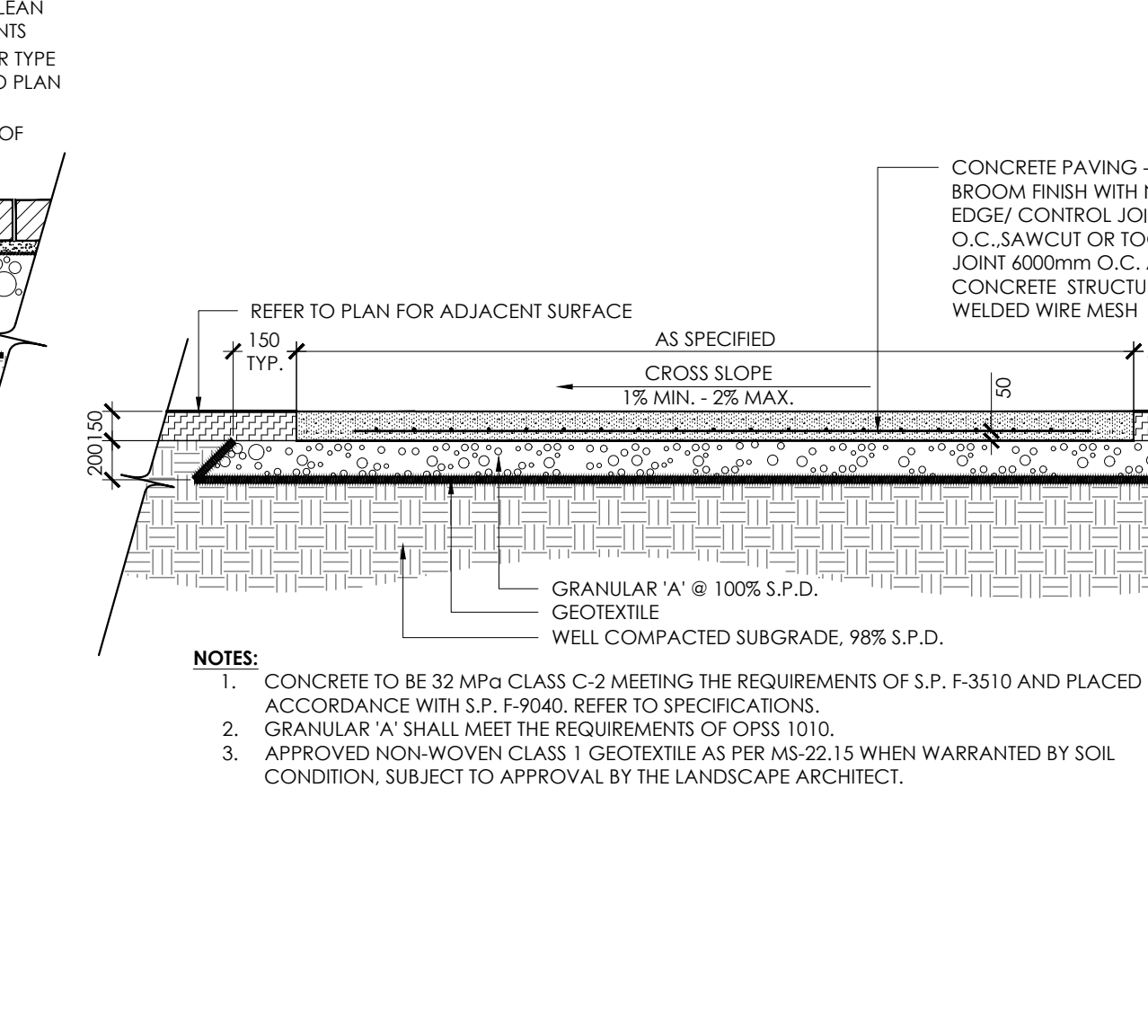
NOTES:
 1. FOR PAVER TYPE REFER TO SPECIFICATIONS. PAVERS SHALL BE INSTALLED IN STRICT ACCORDANCE WITH THE MANUFACTURER'S RECOMMENDATIONS WITH TIGHT BUTT JOINTS OF APPROXIMATELY 3mm, ON A SAND BASE. SAW CUT PAVERS AS REQUIRED. USE AN APPROVED VIBRATORY COMPACTOR IN A CIRCULAR PATTERN.
 2. ALL DAMAGED OR CHIPPED PAVERS MUST BE REPLACED AT THE CONTRACTOR'S COST.
 3. EXCAVATE AND REMOVE ALL TOPSOIL AND UNSTABLE MATERIALS OFF SITE. SUBGRADE TO BE GRADED TO SIMILAR CONTOURS AS FINISH GRADE. COMPACT SUBGRADE TO 95% S.P.D. PLACE 150mm LAYER OF GRANULAR 'A' COMPACTED TO 100% S.P.D.
 4. PLACE MAXIMUM 25mm UNCOMPACTED SAND FOR LEVELLING COURSE.
 5. INSTALL PAVING UNITS IN THE PATTERN AS SPECIFIED PER MANUFACTURER'S PATTERN RECOMMENDATION AND SPECIFICATIONS.
 6. RETAIN EDGING WITH RIGID PAVER EDGE RESTRAINTS AS PER SPECIFICATIONS.

6 LIGHT DUTY UNIT PAVING
N.T.S.



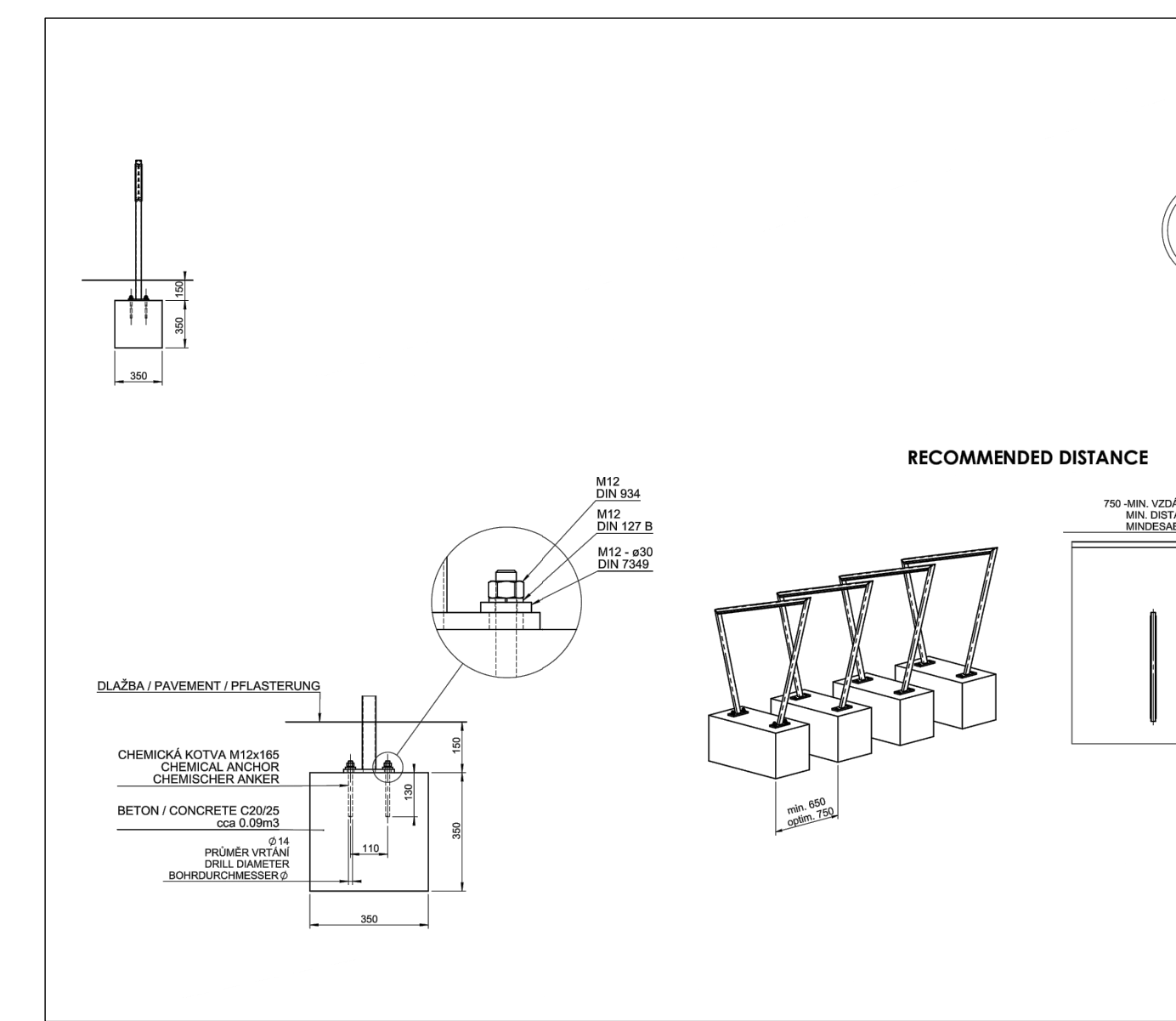
NOTES:
 1. PAVERS REFER TO SPECIFICATIONS. PAVERS SHALL BE INSTALLED IN STRICT ACCORDANCE WITH THE MANUFACTURER'S RECOMMENDATIONS WITH TIGHT BUTT JOINTS OF APPROXIMATELY 3mm, ON A SAND BASE. SAW CUT PAVERS AS REQUIRED. USE AN APPROVED VIBRATORY COMPACTOR IN A CIRCULAR PATTERN.
 2. ALL DAMAGED OR CHIPPED PAVERS MUST BE REPLACED AT THE CONTRACTOR'S COST.
 3. EXCAVATE AND REMOVE ALL TOPSOIL AND UNSTABLE MATERIALS OFF SITE. SUBGRADE TO BE GRADED TO SIMILAR CONTOURS AS FINISH GRADE. COMPACT SUBGRADE TO 95% S.P.D. PLACE 200mm LAYER OF GRANULAR 'A' COMPACTED TO 100% S.P.D.
 4. PLACE MAXIMUM 25mm UNCOMPACTED SAND FOR LEVELLING COURSE.
 5. INSTALL PER UNITS IN THE PATTERN SPECIFIED PER MANUFACTURER'S PATTERN RECOMMENDATION AND SPECIFICATIONS.
 6. RETAIN EDGING WITH RIGID, HEAVY DUTY PAVER EDGE RESTRAINTS AS PER SPECIFICATIONS.
 7. ALL MEASUREMENTS ARE IN MILLIMETRES UNLESS NOTED OTHERWISE.

7 HEAVY DUTY UNIT PAVING
N.T.S.



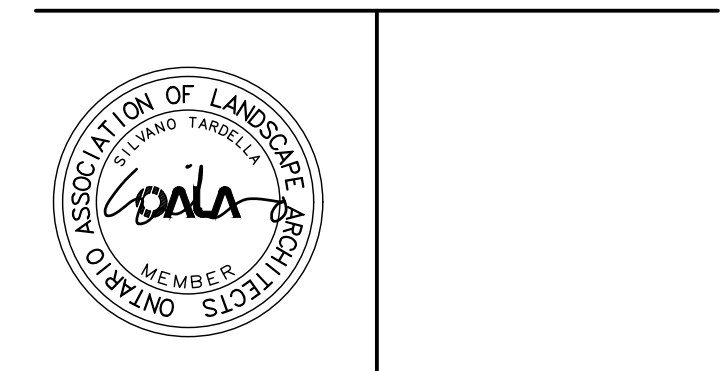
NOTES:
 1. CONCRETE TO BE 32 MPa CLASS C-2 MEETING THE REQUIREMENTS OF S.P. F-3510 AND PLACED IN ACCORDANCE WITH S.P. F-9040. REFER TO SPECIFICATIONS.
 2. GRANULAR 'A' SHALL MEET THE REQUIREMENTS OF OPSS 1010.
 3. APPROVED NON-WOVEN CLASS 1 GEOTEXTILE AS PER MS-22.15 WHEN WARRANTED BY SOIL CONDITION. SUBJECT TO APPROVAL BY THE LANDSCAPE ARCHITECT.

8 LIGHT DUTY CONCRETE PAVING
N.T.S.



9 BIKE RACK
N.T.S.

6	Issued for Second Submission	Jun. 28/21
5	Issued for First Submission	Feb. 04/21
4	Issued for Client Review	Dec. 18/20
3	Lighting Plan Issued for Review	Dec. 16/20
2	Preliminary Concept Issued for Review	Nov. 26/20
1	Schematic Landscape Plan Issued for Review	Nov. 18/20
No.	Description	Date
Revision		
City Approval Stamp		



NAK design strategies
 1285 WELLINGTON STREET WEST, OTTAWA, ON K1Y 3A8 CANADA
 T 613.237.2345 F 613.237.6423 NAKDESIGNSTRATEGIES.COM
 Project

35 Huntmar Drive
&
21 Huntmar Drive

Title

DETAILS

Date: JUNE 2021
Scale: N.T.S.
Drawn: EJ/JC
Checked: LS
Job No.: 20-173

Sheet

D-01

#18424