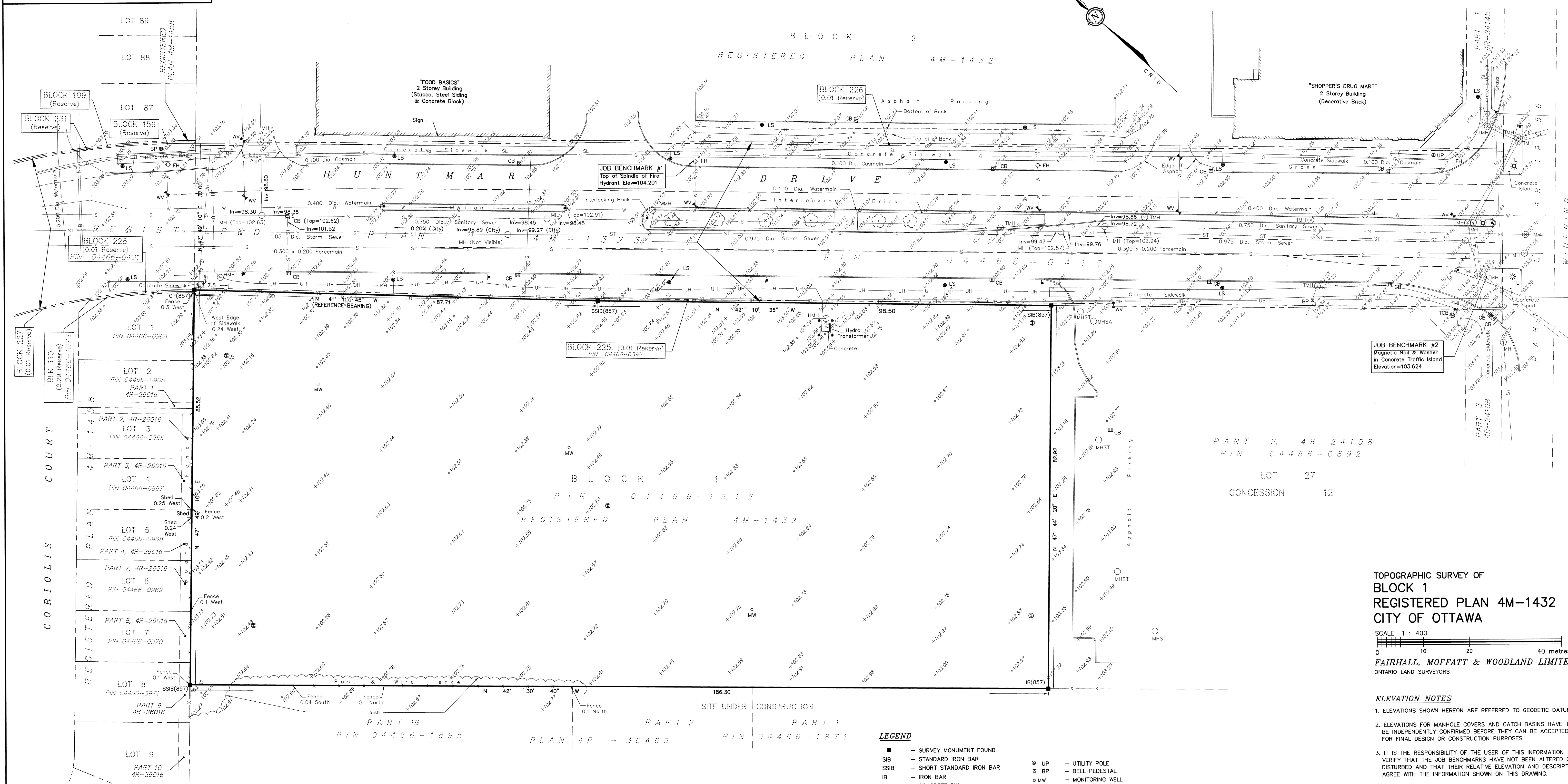


METRIC
DISTANCES AND ELEVATIONS SHOWN ON THIS PLAN ARE IN METRES
AND CAN BE CONVERTED TO FEET BY DIVIDING BY 0.3048



**TOPOGRAPHIC SURVEY OF
BLOCK 1
REGISTERED PLAN 4M-1432
CITY OF OTTAWA**

SCALE 1 : 400

FAIRHALL, MOFFATT & WOODLAND LIMITED
ONTARIO LAND SURVEYORS

ELEVATION NOTES

- ELEVATIONS SHOWN HEREON ARE REFERRED TO GEODETIC DATUM.
- ELEVATIONS FOR MANHOLE COVERS AND CATCH BASINS HAVE TO BE INDEPENDENTLY CONFIRMED BEFORE THEY CAN BE ACCEPTED FOR FINAL DESIGN OR CONSTRUCTION PURPOSES.
- IT IS THE RESPONSIBILITY OF THE USER OF THIS INFORMATION TO VERIFY THAT THE JOB BENCHMARKS HAVE NOT BEEN ALTERED OR DISTURBED AND THAT THEIR RELATIVE ELEVATION AND DESCRIPTION AGREE WITH THE INFORMATION SHOWN ON THIS DRAWING.

LEGEND

■	- SURVEY MONUMENT FOUND	⊙ UP	- UTILITY POLE
SSIB	- STANDARD IRON BAR	⊙ BP	- BELL PEDESTAL
IB	- IRON BAR	⊙ MW	- MONITORING WELL
CP	- CONCRETE PIN	⊙	- BOREHOLE
DIA.	- DIAMETER	⊙	- BOLLARD
BLK	- BLOCK	⊙	- GUY WIRE AND ANCHOR
PIN	- PROPERTY IDENTIFIER NUMBER	⊙	- SIGN
CB	- CATCH BASIN	⊙	- DECIDUOUS TREE
MH	- MANHOLE	— C	- CURB
MHST	- STORM MANHOLE	— S	- GASMAIN
MHSA	- SANITARY MANHOLE	— ST	- SANITARY SEWER
MWH	- WATER MANHOLE	— W	- STORM SEWER
TMH	- TRAFFIC MANHOLE	— WV	- WATERMAIN
HMH	- HYDRO MANHOLE	— UH	- UNDERGROUND BELL
FH	- FIRE HYDRANT	— UH	- UNDERGROUND HYDRO
TCB	- TRAFFIC CONTROL BOX	— SL	- STREET LIGHTING
WV	- WATER VALVE	— C	- ROGERS CABLE
TL	- TRAFFIC LIGHT	— W	- TRAFFIC
LS	- LAMP STANDARD	—	- EDGE OF TREES

UTILITY NOTES

- THIS DRAWING CANNOT BE ACCEPTED AS ACKNOWLEDGING ALL OF THE UNDERGROUND UTILITIES AND IT WILL BE THE RESPONSIBILITY OF THE USER TO CONTACT THE RESPECTIVE UTILITY AUTHORITIES FOR CONFIRMATION OR LOCATION.
- UNDERGROUND UTILITIES, AS REPORTED ON THIS DRAWING, ARE NOT BASED ON AN ACTUAL 'FIELD LOCATE' BY THE RESPECTIVE UTILITY AGENCIES BUT HAVE BEEN COMPILED FROM DATA OBTAINED FROM THE FOLLOWING SOURCE:
a) CITY OF OTTAWA PUBLIC UTILITIES REGISTRY
- BEFORE ANY WORK INVOLVING PROBING, EXCAVATING, ETC., A FIELD LOCATION OF UNDERGROUND PLANT BY THE PERTINENT UTILITY AUTHORITY IS MANDATORY.

NOTES

- THE SURVEY REPRESENTED BY THIS PLAN WAS COMPLETED ON AUGUST 25, 2015.
- THE SURVEY REPRESENTED BY THIS PLAN WAS UPDATED ON JULY 29, 2019.
- BEARINGS ARE GRID REFERRED TO THE SOUTHERLY LIMIT OF HUNTMAR DRIVE SHOWN ON PLAN 4M-1432 AS HAVING A BEARING OF N41°11'45"W.

SURVEYOR'S CERTIFICATE

I CERTIFY THAT:
1. THIS SURVEY AND PLAN ARE CORRECT AND IN ACCORDANCE WITH THE SURVEYS ACT, THE SURVEYORS ACT AND THE REGULATIONS MADE UNDER THEM.
2. THE SURVEY WAS COMPLETED ON JULY 29, 2019.

2019/08/07
DATE

JOHN H. GUTRI
ONTARIO LAND SURVEYOR

**Fairhall
Moffatt &
Woodland**
LIMITED
ONTARIO LAND SURVEYORS
OTTAWA

100-600 TERRY FOX DRIVE, KANATA, ONTARIO K2L 4B6
TEL: (613) 591-2580 FAX: (613) 591-1495
www.fmw.on.ca

JOB No. 224700
E 350751, N 5016205
REFERENCE No. 4(c) - 4M - 1432
S:\085\224700\DWG 2019-07-31
z247_topo-up.dwg

© COPYRIGHT 2019. REPRODUCTION, ALTERATION OR DISTRIBUTION OF THIS PLAN WITHOUT THE WRITTEN CONSENT OF FAIRHALL, MOFFATT & WOODLAND LIMITED IS PROHIBITED.

THIS IS NOT A
VALID COPY
UNLESS EMBOSSED
WITH SEAL