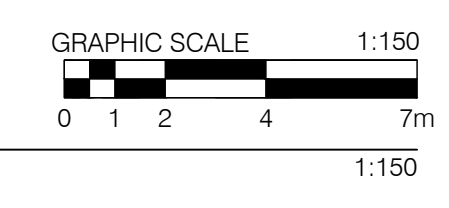


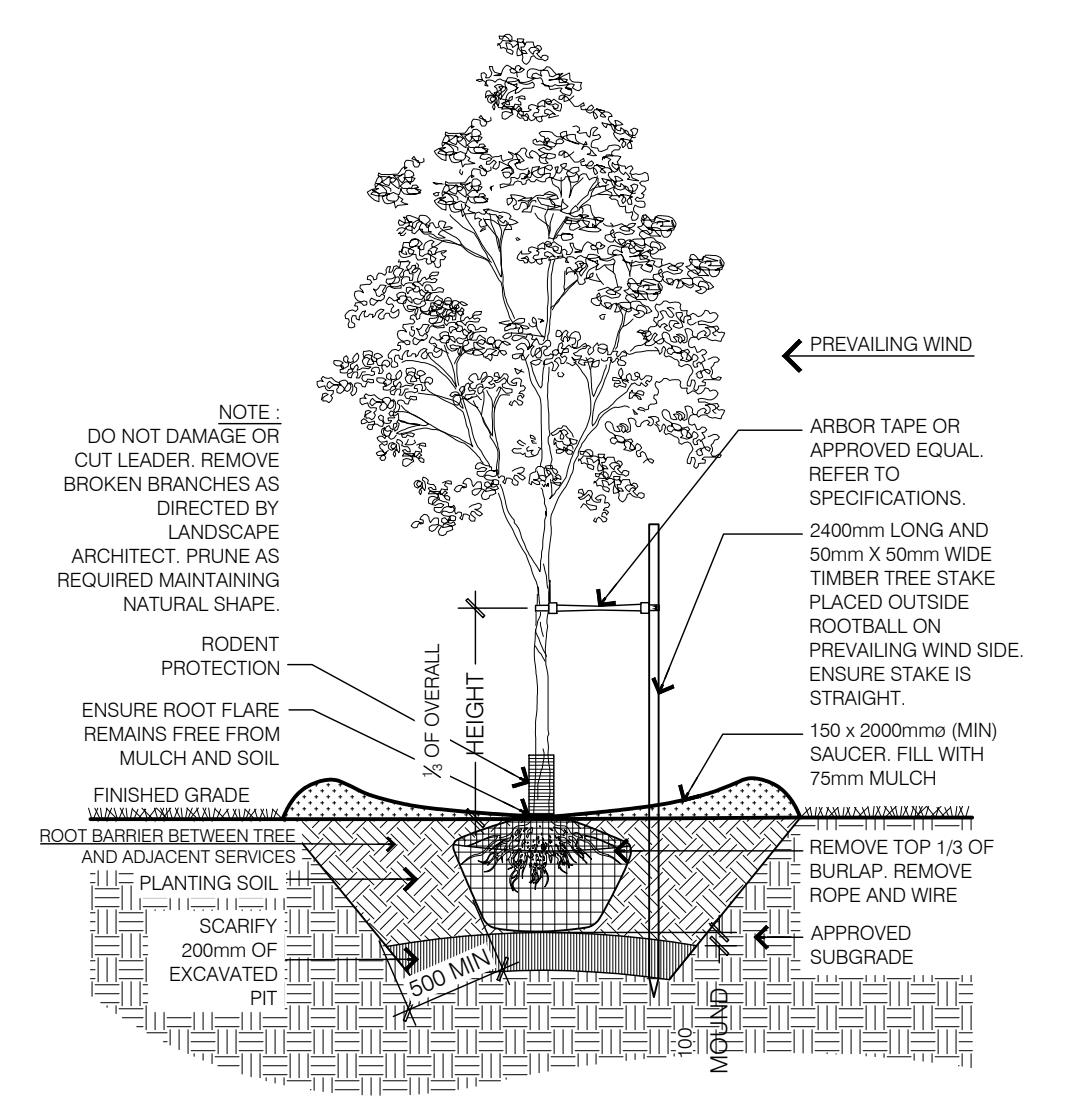
1 LAYOUT PLAN
L1-01



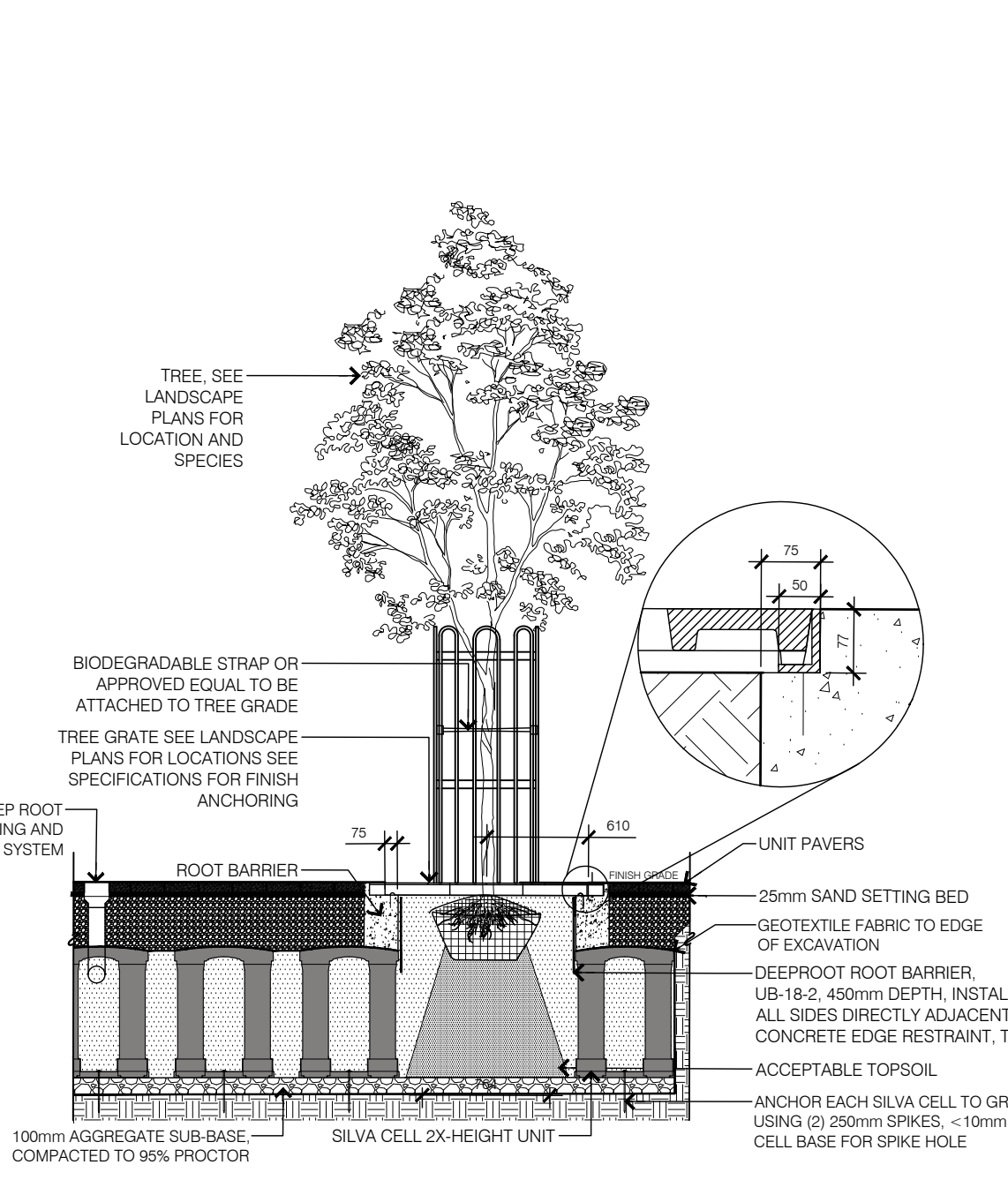
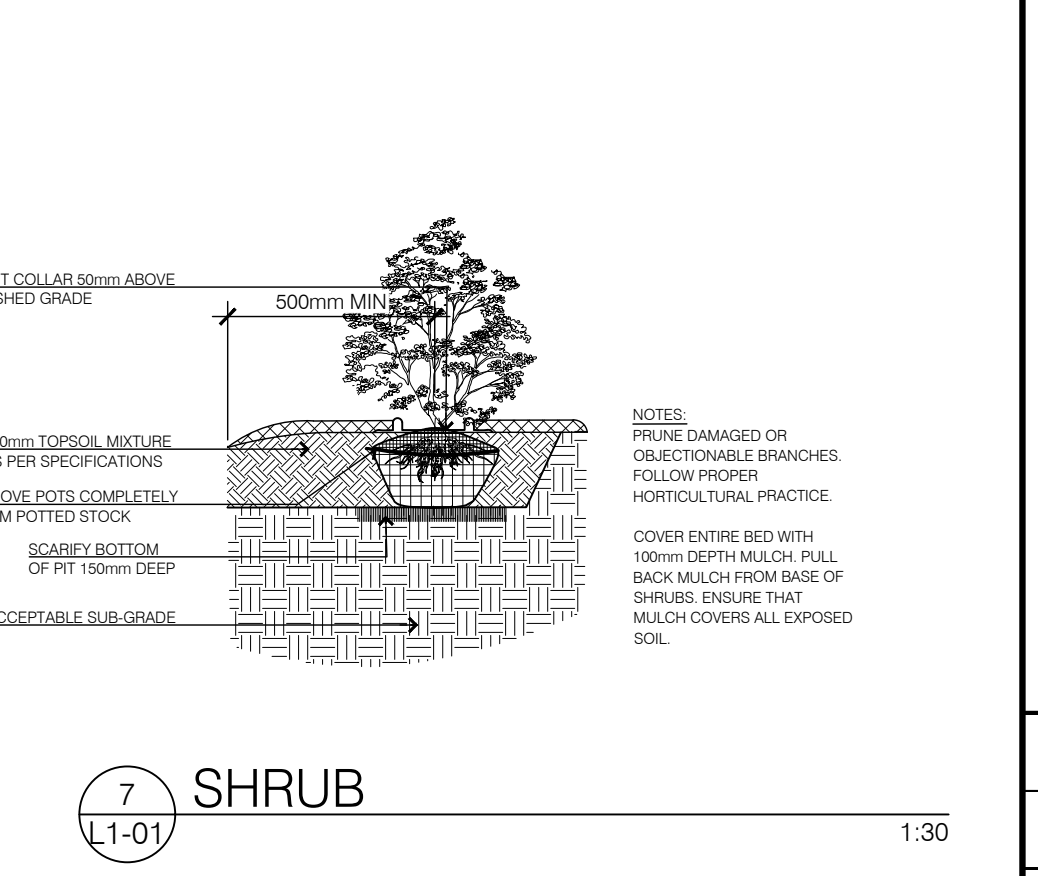
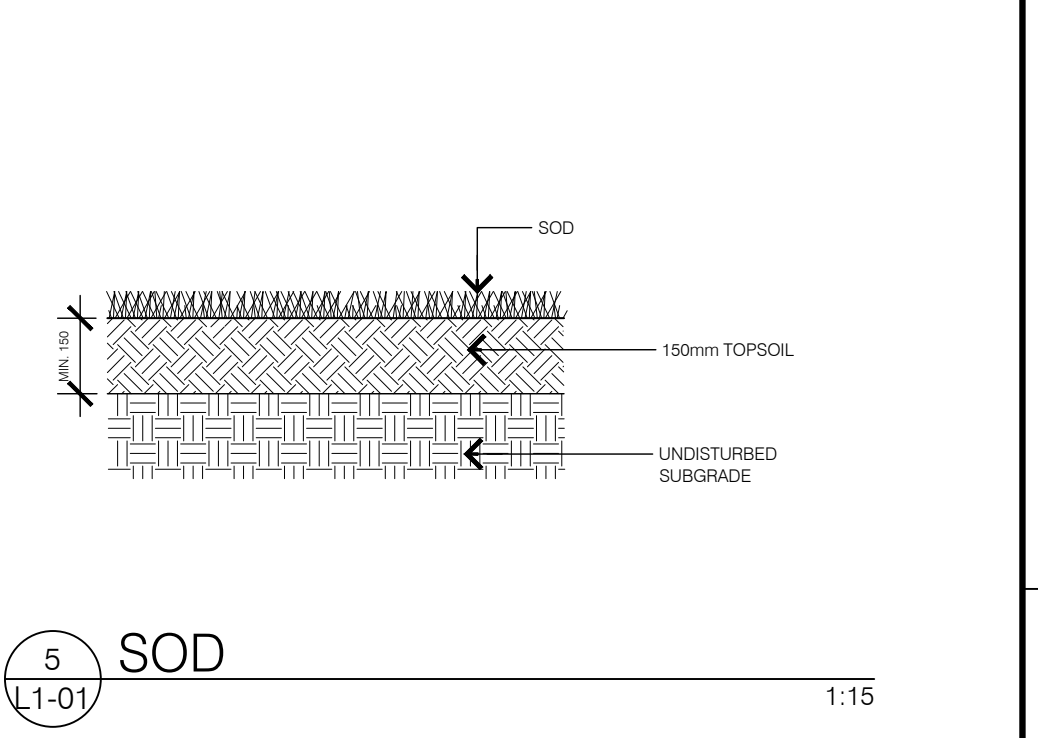
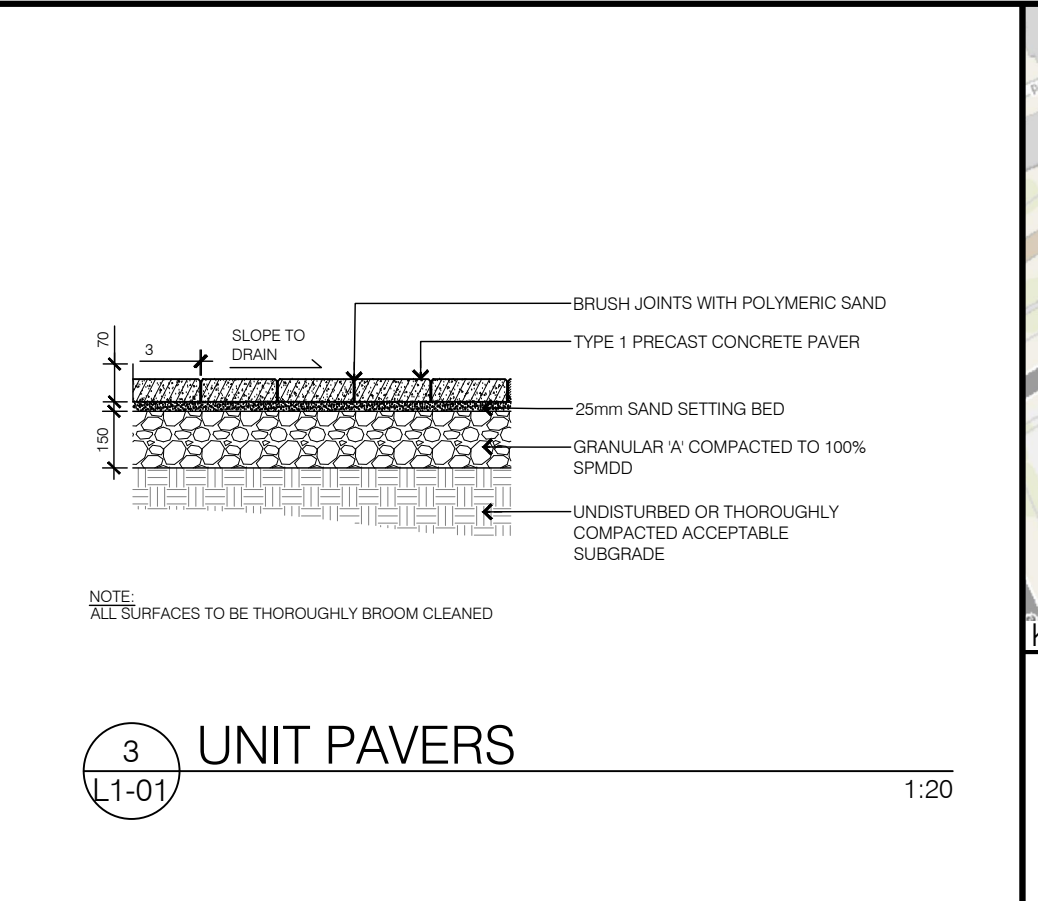
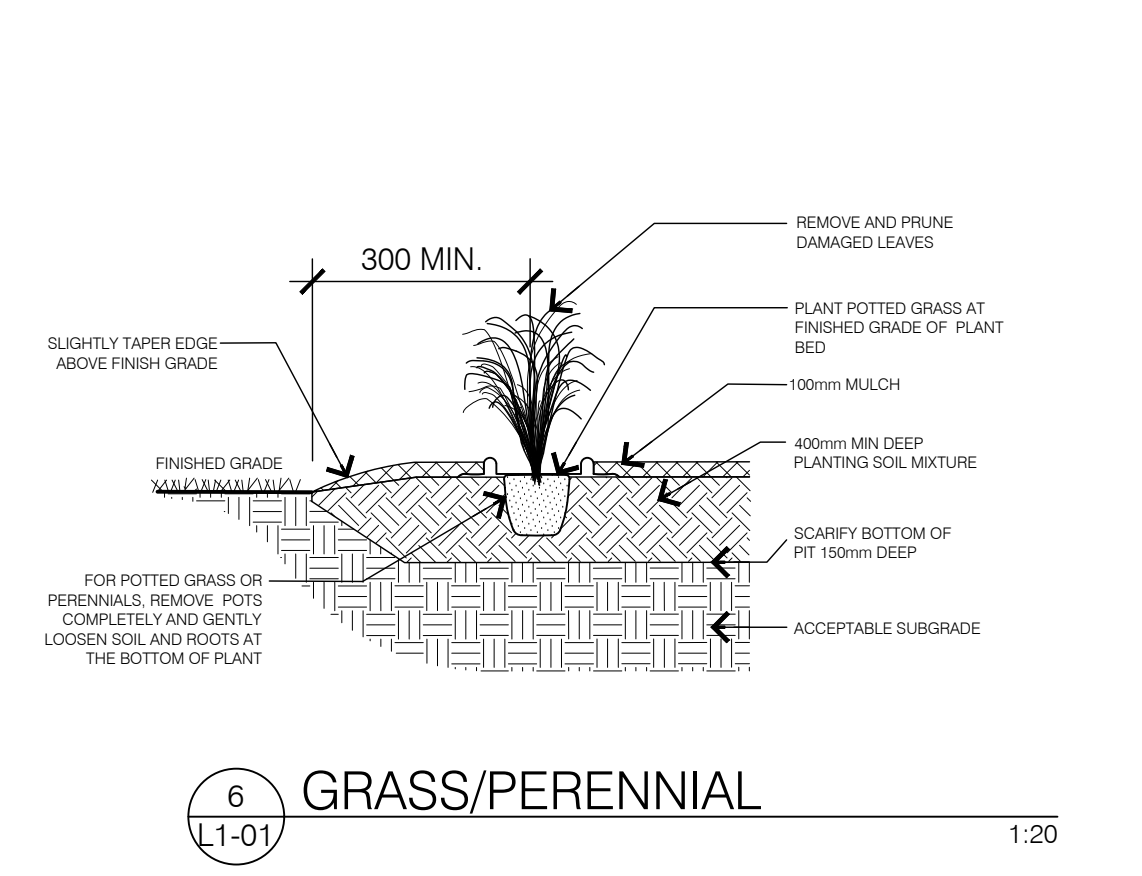
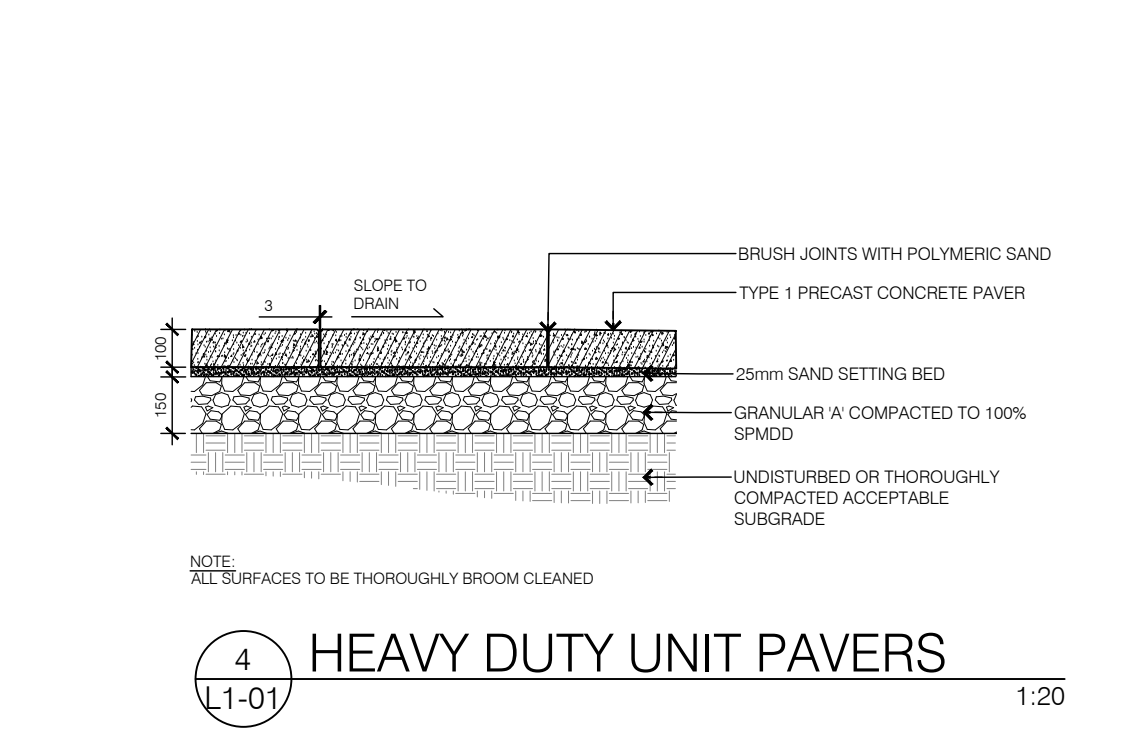
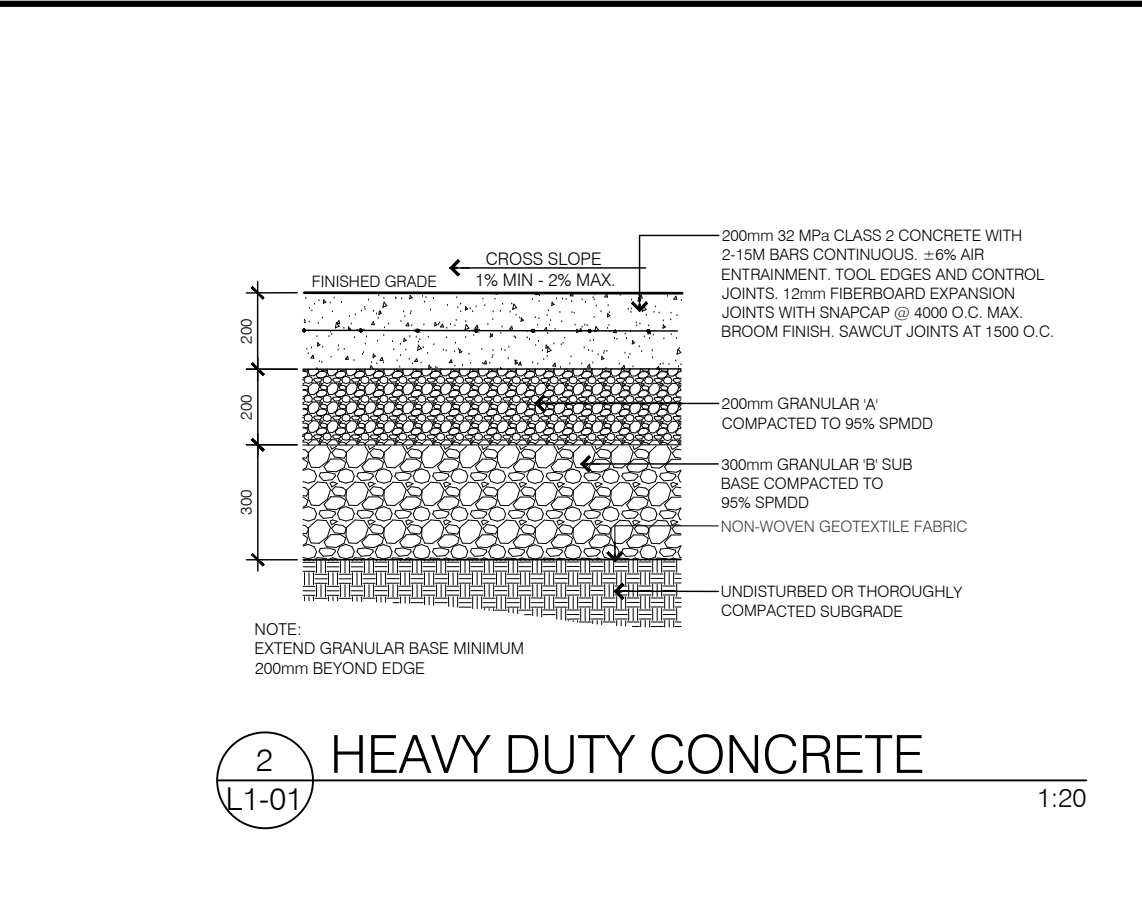
GENERAL PLANT LIST					
KEY	QTY	BOTANICAL NAME	COMMON NAME	SIZE	COMMENTS
DECIDUOUS TREES					
ARR	2	<i>Acer rubrum</i> 'Red Rocket'	Red Rocket Maple	50mm CAL	B&B, W.B.
AR	2	<i>Acer rubrum</i> 'Armstrong Gold'	Armstrong Gold Maple	60mm CAL	B&B, W.B.
AC	4	<i>Ameletcher canadensis</i>	Servicberry	50mm	W.B.
GB	5	<i>Ginkgo biloba</i> 'Princeton Sentry'	Princeton Sentry Maidenhair Tree	60mm	W.B.
OV	3	<i>Ostrya virginiana</i>	Ironwood	50mm	W.B.
QM	2	<i>Quercus macrocarpa</i>	Burr Oak	50mm	W.B.
SHRUBS					
Tc	13	<i>Taxus cuspidata</i> 'Nana'	Dwarf Japanese Yew	1GAL	POTTED
GRASSES					
cb	20	<i>Calamagrostis brachytricha</i>	Autumn Feather Reed Grass	1GAL	POTTED
fg	32	<i>Festuca glauca</i> 'Elijah Blue'	Elijah Blue Fescue	1GAL	POTTED
PERENNIALS					
ac	315	<i>Asarum canadense</i>	Wild Ginger	1GAL	POTTED
ls	25	<i>Liatris spicata</i>	Dense Blazing Star	1GAL	POTTED
hr	13	<i>Hemerocallis</i> 'Rocket City'	Daylily	1GAL	POTTED

LEGEND:

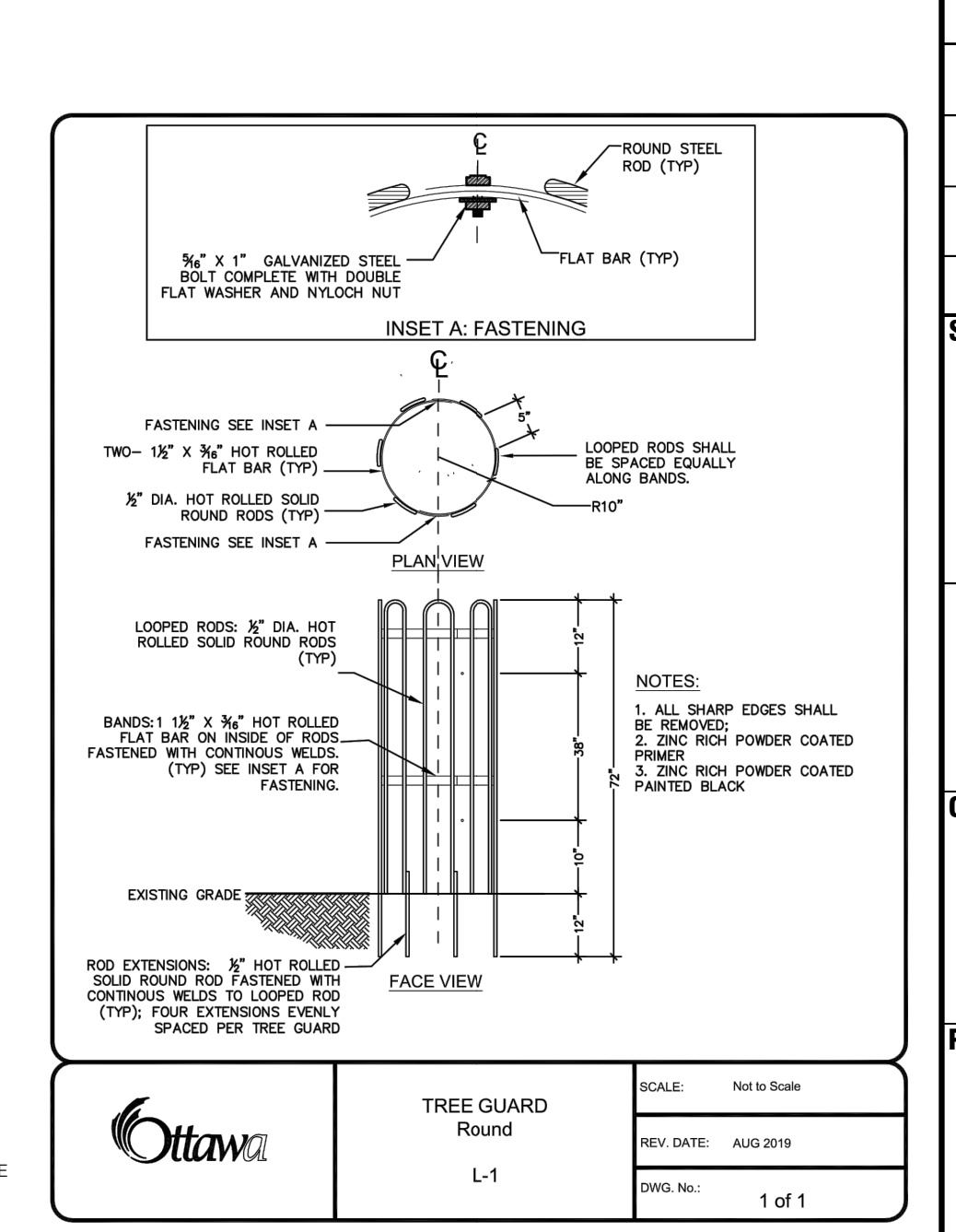
- PROPERTY LINE
- BUILDING OVER HANG
- UNDERGROUND PARKING GARAGE
- EXTENT OF TREE CELL
- [Hatched Box] HEAVY DUTY CONCRETE (2 L1-01)
- [Brick Box] HEAVY DUTY UNIT PAVER (4 L1-01)
- [Grid Box] UNIT PAVES (3 L1-01)
- [Dotted Box] SOD (5 L1-01)
- [Circle with Dot] NEW DECIDUOUS TREE (8 L1-01)
- [Circle with X] CONIFEROUS SHRUBS (7 L1-01)
- [Circle with Sun] GRASSES/PERENNIALS (6 L1-01)
- [Rectangle with X] BENCH
- [Hatched Rectangle] BIKE RACK
- [Rectangle] PLANTER



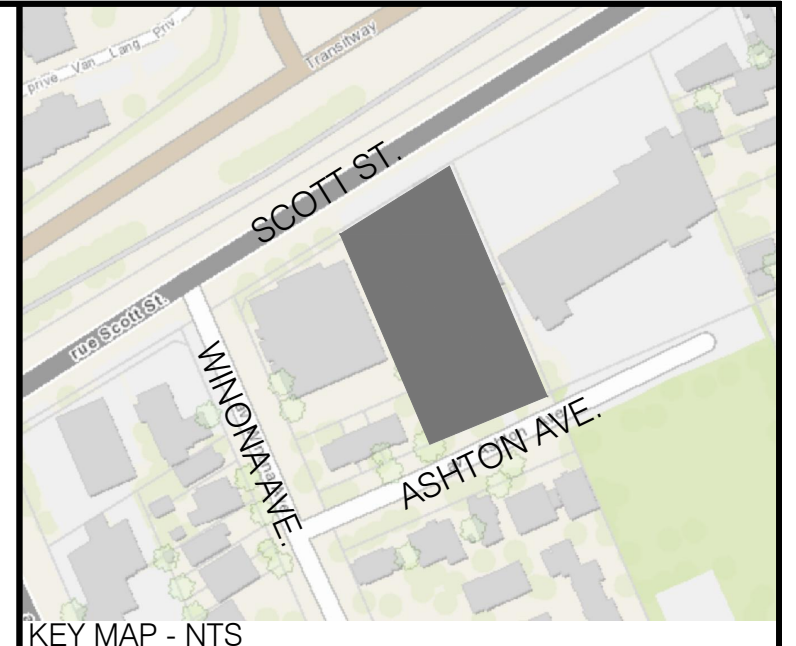
8 DECIDUOUS TREE PLANTING
L1-01



9 TREE CELL
L1-01



9 TREE GUARD
L1-01



- L1-01 GENERAL NOTES**
- All general site information and conditions compiled from architect's and engineer's plans and surveys.
 - Do not scale this drawing.
 - Report any discrepancies prior to commencing work. No responsibility is borne by the Landscape Architect for unknown subsurface conditions.
 - Reinstate all areas and items damaged as a result of construction activities to the satisfaction of the Landscape Architect.
 - Drawing may not be used for construction until signed by Landscape Architect as issued for construction.
 - The accuracy of the position of utilities is not guaranteed.
 - Individual utility co. must be contacted for confirmation of utility existence and location prior to digging.
 - This drawing is an instrument of service and requires the permission of the Landscape Architect for use. Copyright is reserved by the Landscape Architect, David M. Lashley.
- L1-01 LANDSCAPE NOTES**
- Plant material shall be No. 1 Grade and shall comply with the Metric Guide Specifications for Nursery stock (latest edition), published by Canadian Nursery Trades Association.
 - Plant substitutions shall not be permitted unless approved by the Landscape Architect.
 - Obtain approval of planting prior to digging.
 - Topsoil shall be garden soil mixture sandy loam with min. 5% organic matter and peat moss added at ratio of 1:10, topsoil to be approved by Landscape Architect.

05	2022-07-05	RE-ISSUED FOR SPA
04	2022-02-02	RE-ISSUED FOR SPA
03	2021-09-29	RE-ISSUED FOR SPA
02	2021-06-12	RE-ISSUED FOR SPA
01	2021-03-11	ISSUED FOR SPA

NO.	DATE	DESCRIPTION
05	2022-07-05	RE-ISSUED FOR SPA
04	2022-02-02	RE-ISSUED FOR SPA
03	2021-09-29	RE-ISSUED FOR SPA
02	2021-06-12	RE-ISSUED FOR SPA
01	2021-03-11	ISSUED FOR SPA

SURFACE ASSOCIATES
LANDSCAPE ARCHITECTURE AND SITE ENGINEERING

CONSULTANT:

LASHLEY ASSOCIATES
LANDSCAPE ARCHITECTURE AND SITE ENGINEERING

PROJECT: 2050 SCOTT STREET

OTTAWA, ONTARIO

DRAWING TITLE: SPA - LANDSCAPE PLAN

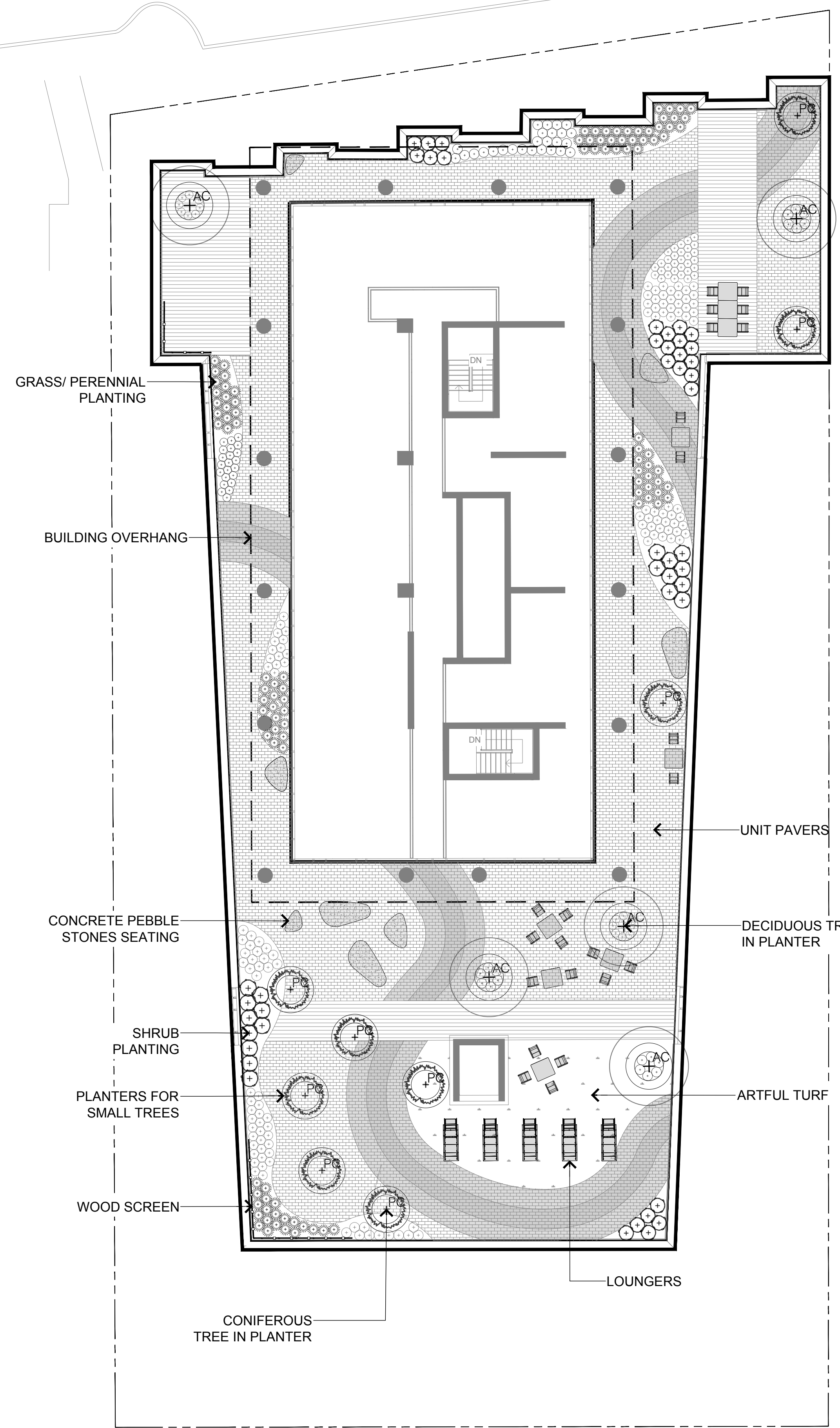
DATE: 2021/09/28 **DRAWING NO.:** L1-01

SCALE: AS SHOWN

DRAWN BY: EL

LA PROJECT NO.: 21801-1

SCOTT STREET

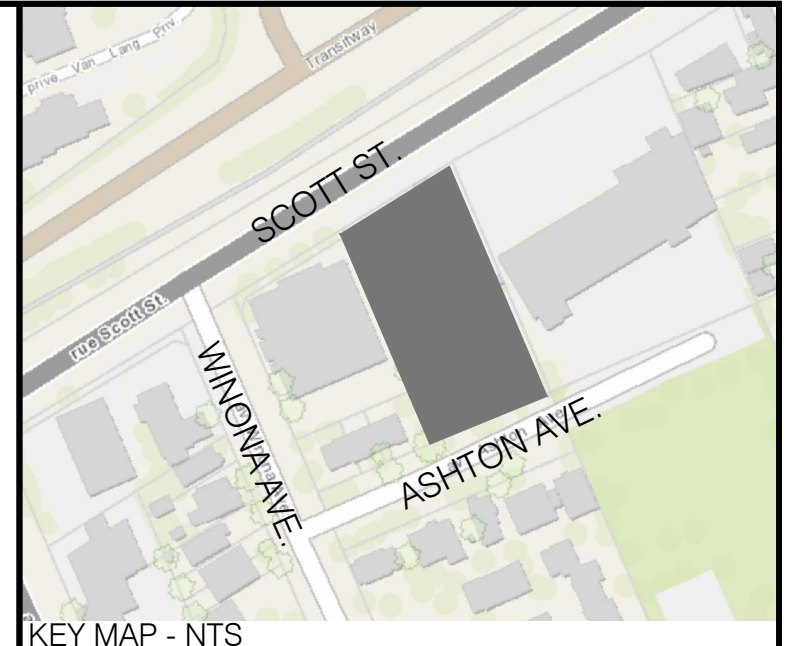


ASHTON AVENUE

TERRACE PLANT LIST					
KEY	QTY	BOTANICAL NAME	COMMON NAME	SIZE	COMMENTS
DECIDUOUS TREE					
AC	5	<i>Ametanther canadensis</i>	Serviceberry	50mm	MULTI-STEM
CONIFEROUS TREE					
PC	9	<i>Pinus cembra</i> 'Algonquin Pillar'	Algonquin Pillar Swiss Stone Pine	1 GAL	POTTED
SHRUBS					
Bm	17	<i>Buxus microphylla</i> 'Pincushion'	Pincushion Boxwood	1 GAL	POTTED
Ca	26	<i>Clethra alnifolia</i> 'Hummingbird'	Summersweet	1 GAL	POTTED
GRASSES					
cb	78	<i>Calamagrostis brachytricha</i>	Autumn Feather Reed Grass	1 GAL	POTTED
hm	36	<i>Hakonechloa macra</i> 'All Gold'	Golden Japanese Forest Grass	1 GAL	POTTED
PERENNIALS					
ac	47	<i>Asarum canadense</i>	Wild Ginger	1 GAL	POTTED
ar	44	<i>Ajuga reptans</i> 'Catkins Giant'	Bugleweed	1 GAL	POTTED
am	17	<i>Achillea millefolium</i> 'Summer Pastels'	Yarrow	1 GAL	POTTED
la	19	<i>Lavandula angustifolia</i> 'Essence Purple'	English Lavender	1 GAL	POTTED
ls	69	<i>Liatris spicata</i>	Dense Blazing Star	1 GAL	POTTED

LEGEND:

- PROPERTY LINE
- - - BUILDING OVERHANG
- [Pattern] PAVER TYPE 1
- [Pattern] PAVER TYPE 2
- [Pattern] PAVER TYPE 3
- [Pattern] PAVER TYPE 4
- [Pattern] SOD
- (+ in circle) NEW DECIDUOUS TREE
- (Star in circle) CONIFEROUS SHRUBS
- (Dotted in circle) GRASSES/ PERENNIALS
- [Table/Chair] MOVEABLE TABLE AND CHAIR
- [Lounger] LOUNGERS
- [Stone] CONCRETE SEATING STONE



- KEY MAP - NTS**
- L1-01 GENERAL NOTES**
- All general site information and conditions compiled from architect's and engineer's plans and surveys.
 - Do not scale this drawing.
 - Report any discrepancies prior to commencing work. No responsibility is born by the Landscape Architect for unknown subsurface conditions.
 - Reinstate all areas and items damaged as a result of construction activities to the satisfaction of the Landscape Architect.
 - Drawing may not be used for construction until signed by Landscape Architect as issued for construction.
 - The accuracy of the position of utilities is not guaranteed.
 - Individual utility co. must be contacted for confirmation of utility existence and location prior to digging.
 - This drawing is an instrument of service and requires the permission of the Landscape Architect for use. Copyright is reserved by the Landscape Architect, David M. Lashley.
- L1-01 LANDSCAPE NOTES**
- Plant material shall be No. 1 Grade and shall comply with the Metric Guide Specifications for Nursery stock (latest edition), published by Canadian Nursery Trades Association.
 - Plant substitutions shall not be permitted unless approved by the Landscape Architect.
 - Obtain approval of planting prior to digging.
 - Topsoil shall be garden soil mixture sandy loam with min. 5% organic matter and peat moss added at ratio of 1:10, topsoil to be approved by Landscape Architect.

01	2021-07-19	ISSUED FOR COORDINATION
----	------------	-------------------------

NO.	DATE	DESCRIPTION
SEAL:		
		NORTH:



CONSULTANT:

LASHLEY & ASSOCIATES
LANDSCAPE ARCHITECTURE AND SITE ENGINEERING

2250 GLACIETTE AVENUE
OTTAWA, ON K2V 7G5
T 613 838 4551
M 613 838 4551
E info@lashleya.com

PROJECT:

2050 SCOTT STREET

OTTAWA, ONTARIO

DRAWING TITLE:

6TH LEVEL TERRACE PLAN

DATE: 2021/09/28	DRAWING NO.:
SCALE: AS SHOWN	L1-02
DRAWN BY: EL	
LA PROJECT NO. 21801-1	

