

- PROPERTY LINE
- - - PROPOSED WATERMAIN
- - - PROPOSED SANITARY SEWER
- - - PROPOSED STORM SEWER
- PROPOSED PERFORATED SUBDRAIN
- VB PROPOSED VALVE BOX
- CS PROPOSED CURB STOP
- ◆ PROPOSED FIRE HYDRANT
- ⊕ PROPOSED SIAMESE CONNECTION
- ⊙ PROPOSED REMOTE WATER METER
- ⊕ PROPOSED WATER METER
- PROPOSED STORM MANHOLE
- PROPOSED SANITARY MANHOLE
- PROPOSED CATCH BASIN
- PROPOSED CB 'T'

EXISTING UNDERGROUND SERVICES AND UTILITY LOCATIONS DERIVED FROM THE BEST AVAILABLE DATA, AS-CONSTRUCTED DRAWINGS, UTILITY DRAWINGS AND INFRASTRUCTURE MAPPING PROVIDED BY THE CITY OF OTTAWA.

CONTRACTOR TO CONFIRM ELEVATIONS AND LOCATIONS OF EXISTING UNDERGROUND SERVICES AND UTILITIES WITHIN THE RIGHT OF WAY PRIOR TO INSTALLATION OF SITE SERVICING INFRASTRUCTURE.

THE CONTRACTOR SHALL IMPLEMENT BEST MANAGEMENT PRACTICES, TO PROVIDE FOR PROTECTION OF THE AREA DRAINAGE SYSTEM AND THE RECEIVING WATERCOURSE. DURING CONSTRUCTION ACTIVITIES, THE CONTRACTOR ACKNOWLEDGES THAT THE FAILURE TO IMPLEMENT APPROPRIATE EROSION AND SEDIMENT CONTROL MEASURES MAY BE SUBJECT TO PENALTIES IMPOSED BY ANY APPLICABLE REGULATORY AGENCY.

**NOT FOR CONSTRUCTION**

**TOPOGRAPHIC INFORMATION**  
TOPOGRAPHIC INFORMATION PROVIDED BY FARLEY, SMITH AND DENIS SURVEYING LTD.  
PROJ. NO. 228-19  
DATED JUNE 9, 2020

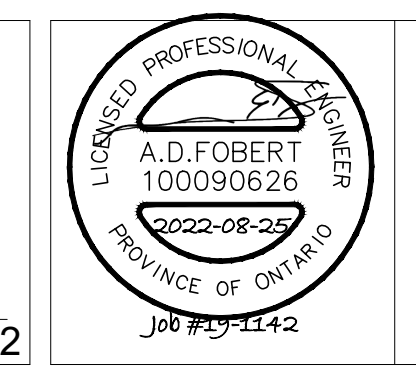
**SITE PLAN INFORMATION**  
SITE PLAN PROVIDED BY RLA ARCHITECTURE  
PROJ. NO. 1929  
DATED AUGUST 19, 2021

**GEOTECHNICAL STUDY**  
GEOTECHNICAL RECOMMENDATIONS PROVIDED BY PATERSON GROUP  
PROJ. NO. PG5222-1  
DATED APRIL 29, 2020

**SITE SERVICING AND STORMWATER MANAGEMENT STUDY**  
SERVICING AND STORMWATER MANAGEMENT RECOMMENDATIONS PROVIDED BY DSEL  
DATED MARCH 25, 2021

**BENCH MARK**  
FIRE HYDRANT TOP OF SPINDLE LOCATED AT NORTHEAST CORNER OF PROPERTY AT SCOTT STREET  
ELEV=64.02

No.	BY	DATE	DESCRIPTION
5	A.S.	22.08.23	REVISED PER CITY COMMENTS
4	A.S.	22.07.18	REVISED PER CITY COMMENTS
3	A.S.	22.07.07	REVISED PER CITY COMMENTS
2	A.D.F.	21.09.29	ISSUED FOR UDRP SUBMISSION
1	A.D.F.	21.04.05	1ST SUBMISSION



PROJECT No. 19-1142

**PLAN AND PROFILE  
ASHTON AVENUE**

TOP OF WATERMAIN	SANITARY INVERT	STORM INVERT	CENTERLINE CHAINAGE	TOP OF WATERMAIN
60.73	60.86	60.40	0+000.00	64.00
60.64	60.86	60.40	0+003.43	64.00
60.56	60.86	60.40	0+010.13	64.00
60.35	60.86	60.40	0+020.00	64.00
60.39	60.86	60.40	0+040.00	64.00
60.41	60.86	60.40	0+060.00	64.00
60.41	60.86	60.40	0+071.45	64.00
60.38	60.86	60.40	0+080.00	64.00
60.37	60.86	60.40	0+082.13	64.00
60.37	60.86	60.40	0+084.51	64.00

SURFACE DEVELOPMENTS: 88 SPADINA AVENUE, Tel. (613) 255-5065  
**DSEL** david schaeffer engineering ltd. 120 Ibr Road Unit 103, Stittsville, Ontario, K2S 1E9, Tel. (613) 836-0856, Fax. (613) 836-7183, www.DSEL.ca  
 DESIGNED BY: C.P.B. CHECKED BY: B.N.C. DRAWING NO. SSP-1 SHEET NO. 5 of 6  
 SCALE: 1:250 DATE: 2022-07-18