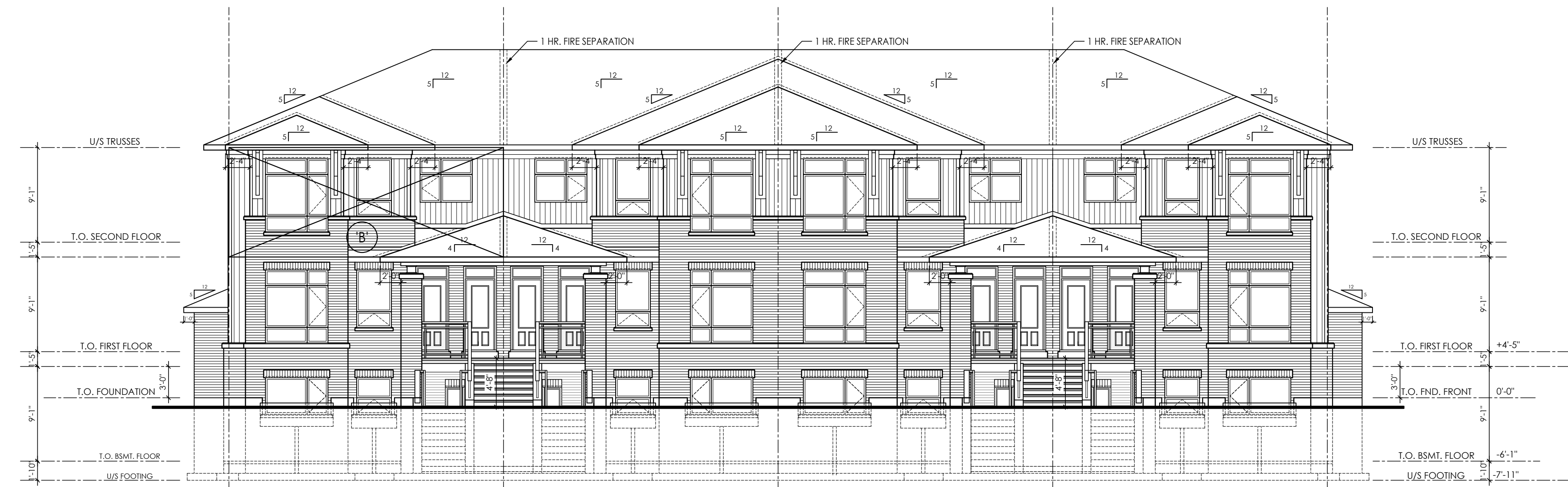


END UNIT
UNIT 'A' - 211
UNIT 'B' - 212
UNIT 'C' - 213

BLOCK 2 - SIDE (WEST) ELEVATION



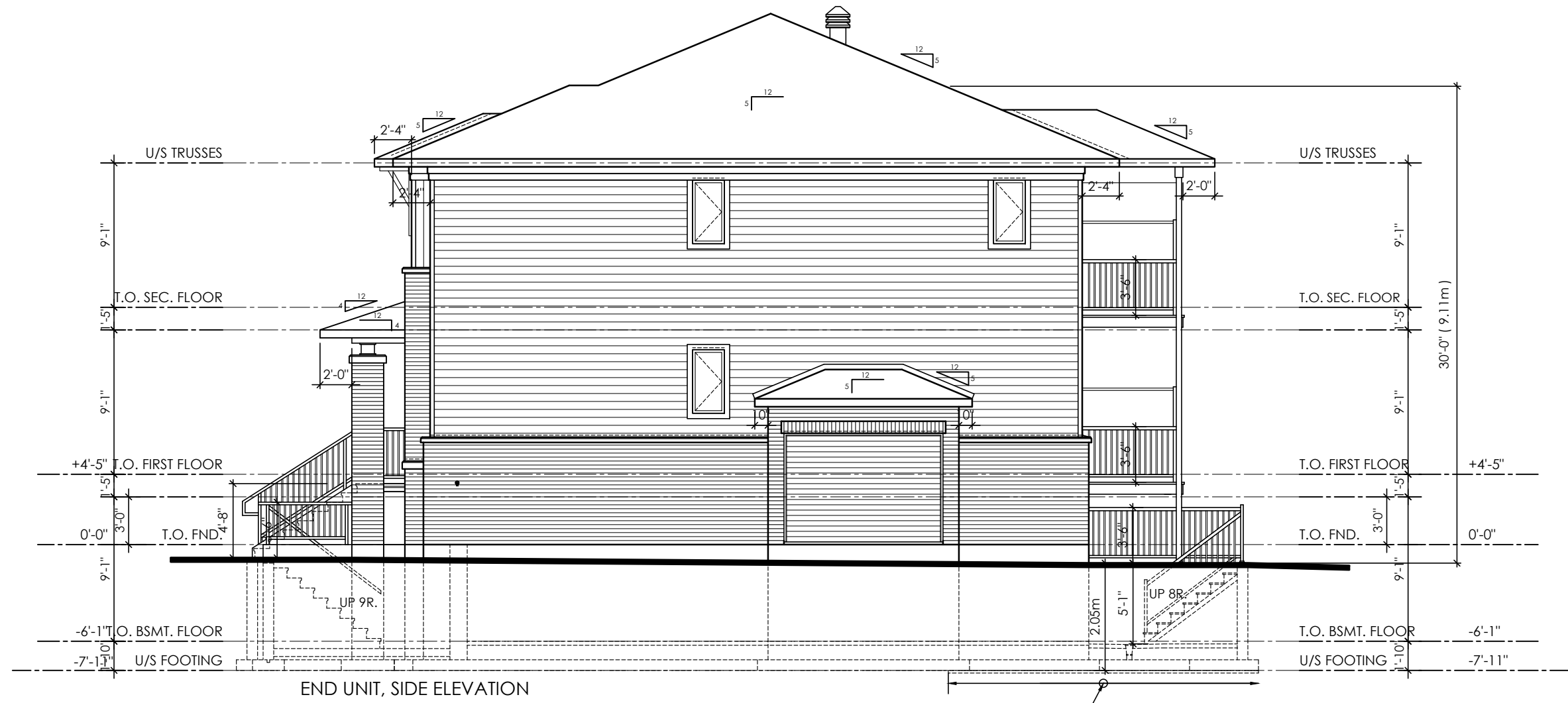
END UNIT
UNIT 'A' - 211
UNIT 'B' - 212
UNIT 'C' - 213

MID UNIT REV.
UNIT 'A' - 221
UNIT 'B' - 222
UNIT 'C' - 223

MID UNIT
UNIT 'A' - 231
UNIT 'B' - 232
UNIT 'C' - 233

END UNIT REV.
UNIT 'A' - 241
UNIT 'B' - 242
UNIT 'C' - 243

BLOCK 2 - FRONT (SOUTH) ELEVATION



END UNIT REV.
UNIT 'A' - 241
UNIT 'B' - 242
UNIT 'C' - 243

BLOCK 2 - SIDE (EAST) ELEVATION



END UNIT REV.
UNIT 'A' - 241
UNIT 'B' - 242
UNIT 'C' - 243

MID UNIT
UNIT 'A' - 231
UNIT 'B' - 232
UNIT 'C' - 233

MID UNIT REV.
UNIT 'A' - 221
UNIT 'B' - 222
UNIT 'C' - 223

END UNIT
UNIT 'A' - 211
UNIT 'B' - 212
UNIT 'C' - 213

BLOCK 2 - REAR (NORTH) ELEVATION

REFER TO 3/16" PLANS FOR DIMENSIONS & DETAILS NOT SHOWN.

**M. David Blakely
Architect Inc.**
2200 Prince of Wales Dr. - Suite 101
Ottawa, Ontario K2E 6Z9
Phone (613) 226-8811 Fax (613) 226-7942

GENERAL NOTES:

1. THE CONTRACTOR IS RESPONSIBLE FOR CHECKING AND VERIFYING ALL DIMENSIONS. ANY DISCREPANCY MUST BE REPORTED TO M. DAVID BLAKELY ARCHITECT INC.
2. ALL WORK AND MATERIALS TO BE IN COMPLIANCE WITH ALL CODES, REGULATIONS, AND BY-LAWS.
3. ADDITIONAL DRAWINGS MAY BE ISSUED FOR CLARIFICATION TO ASSIST THE PROPER EXECUTION OF WORK. SUCH DRAWINGS WILL HAVE THE SAME MEANING AND INTENT AS IF THEY WERE INCLUDED WITH THE PLANS IN CONTRACT DOCUMENTS.
4. DO NOT SCALE DRAWINGS.
5. THIS DRAWING SHALL NOT BE USED OR COPIED WITHOUT THE AUTHORIZATION OF THE ARCHITECT.
6. THIS DRAWING SHALL NOT BE USED FOR PERMIT OR CONSTRUCTION UNLESS THE DRAWING BEARS THE ARCHITECT'S SEAL AND SIGNATURE.
7. THIS REPRODUCTION SHALL NOT BE ALTERED.

ARCHITECT SEAL:

NO.	DATE	DESCRIPTION	INT.	NO.	DATE	DESCRIPTION	INT.
1.	29/03/21	FOR SITE PLAN	SM	13.			
2.				14.			
3.				15.			
4.				16.			
5.				17.			
6.				18.			
7.				19.			
8.				20.			
9.				21.			
10.				22.			
11.				23.			
12.				24.			

A - DETAIL NUMBER
B - SHEET NUMBER (DETAIL REQUIRED)
C - SHEET NUMBER (DETAIL LOCATION)

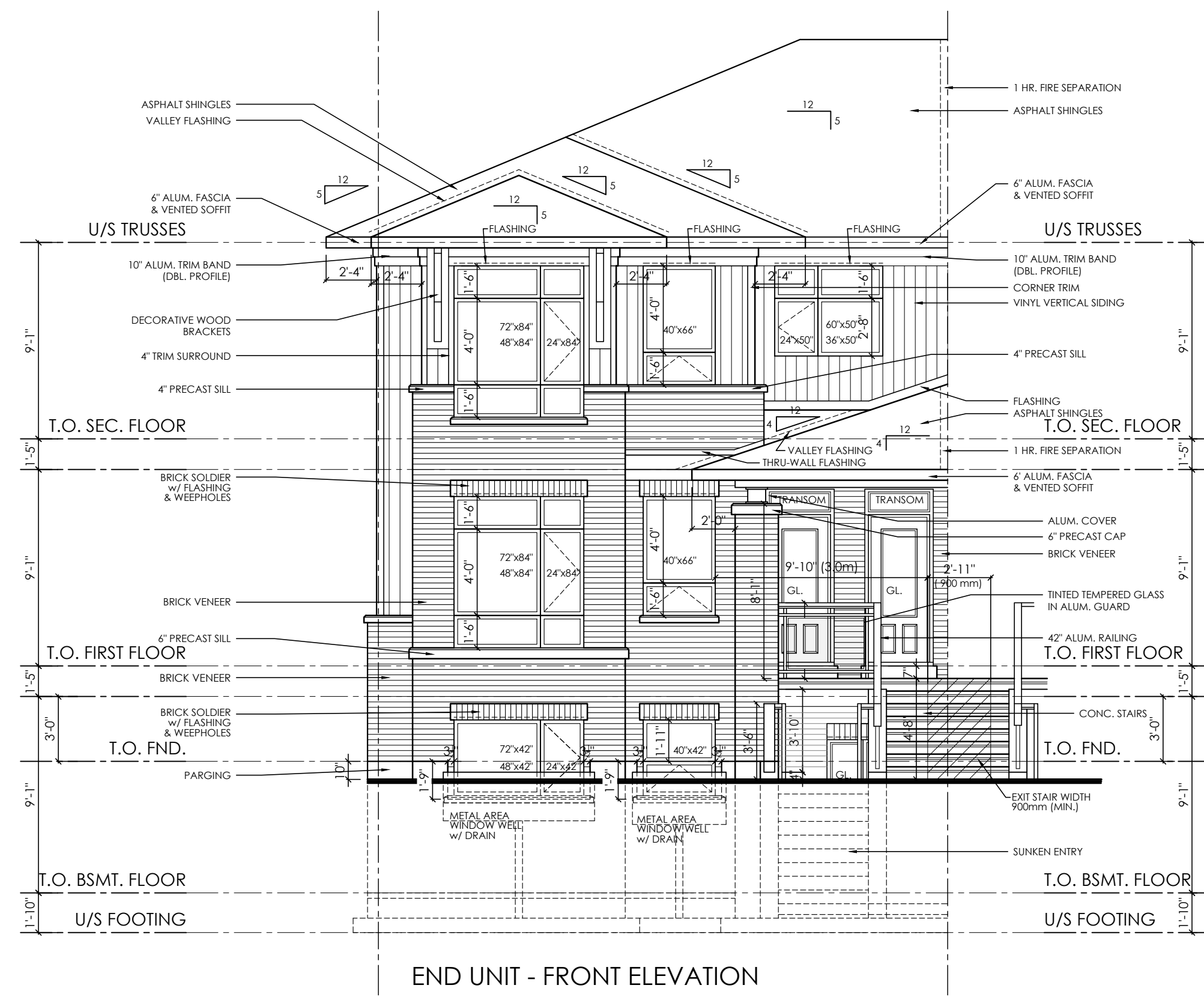
PROJECT: **TERRACE FLATS
KANATA WEST
1620 MAPLE GROVE - BLOCK 29
OTTAWA, ONT.**

CLIENT: **RICH CRAFT
Group Of Companies**

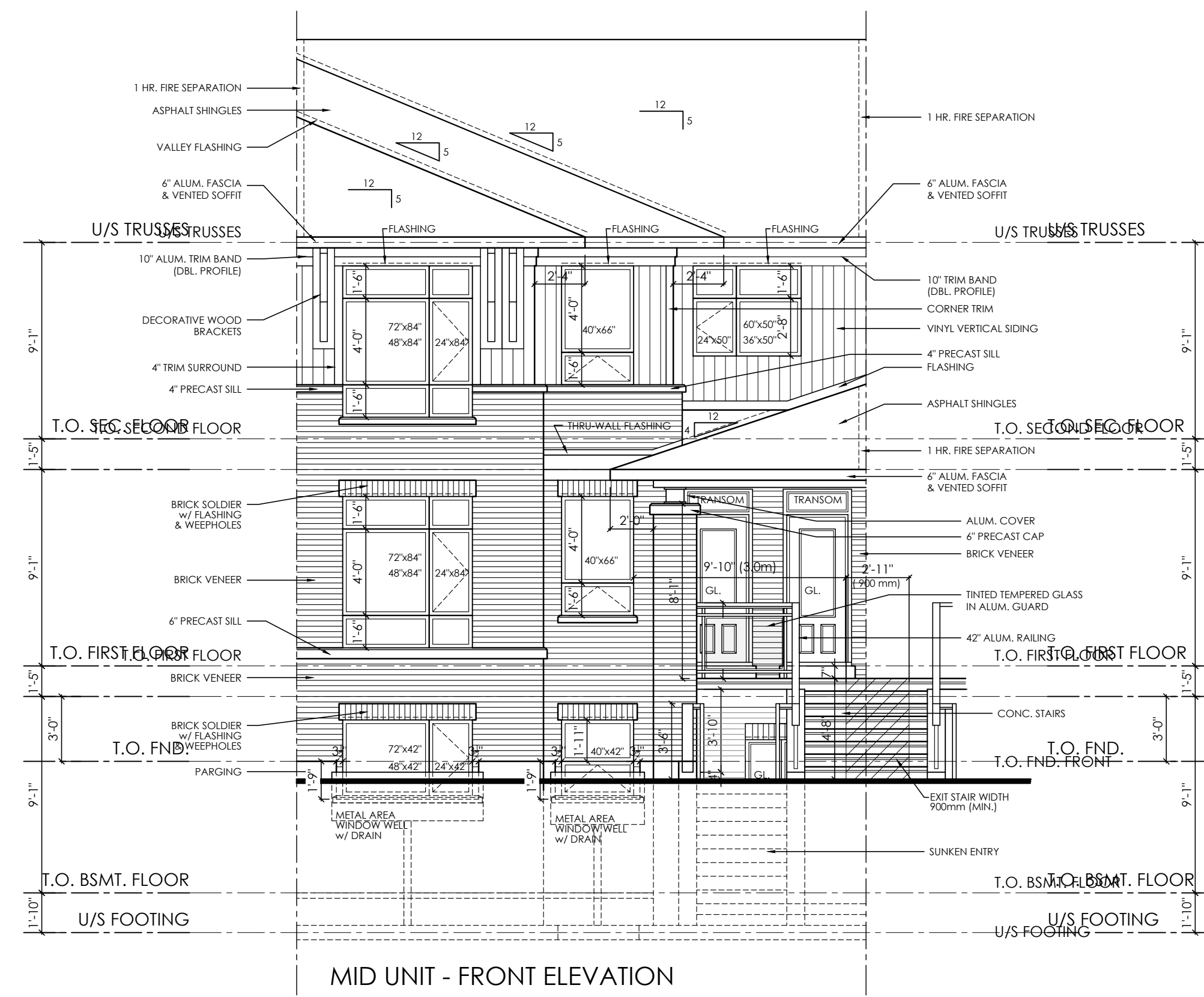
DRAWING TITLE: **BLOCK 2
ELEVATIONS**

DATE: **MARCH, 2018.** SCALE: **1/8" = 1'-0"** SHEET No.: **B2-2**

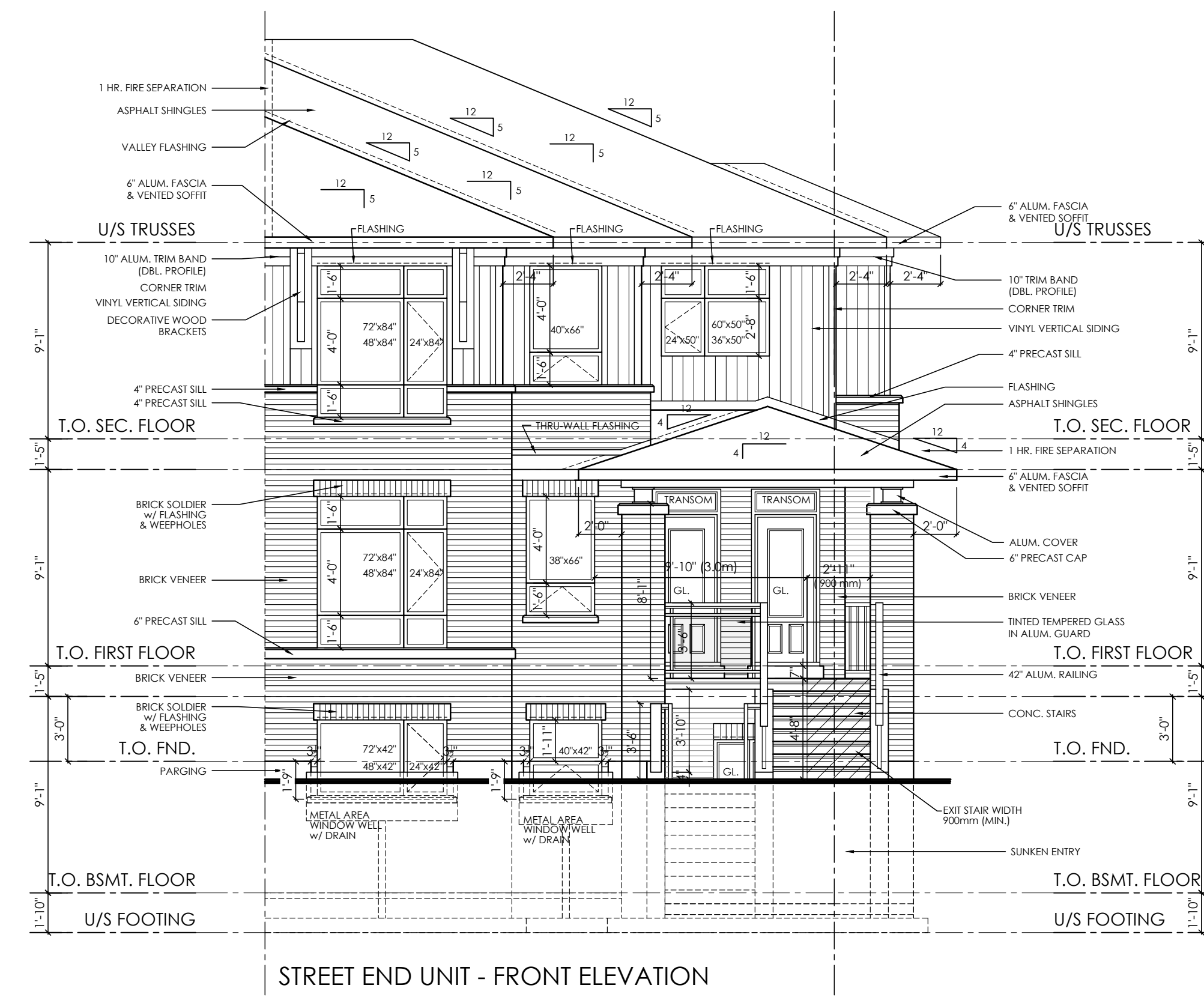
DRAWN BY: **SBM** CHECKED: **MDB**



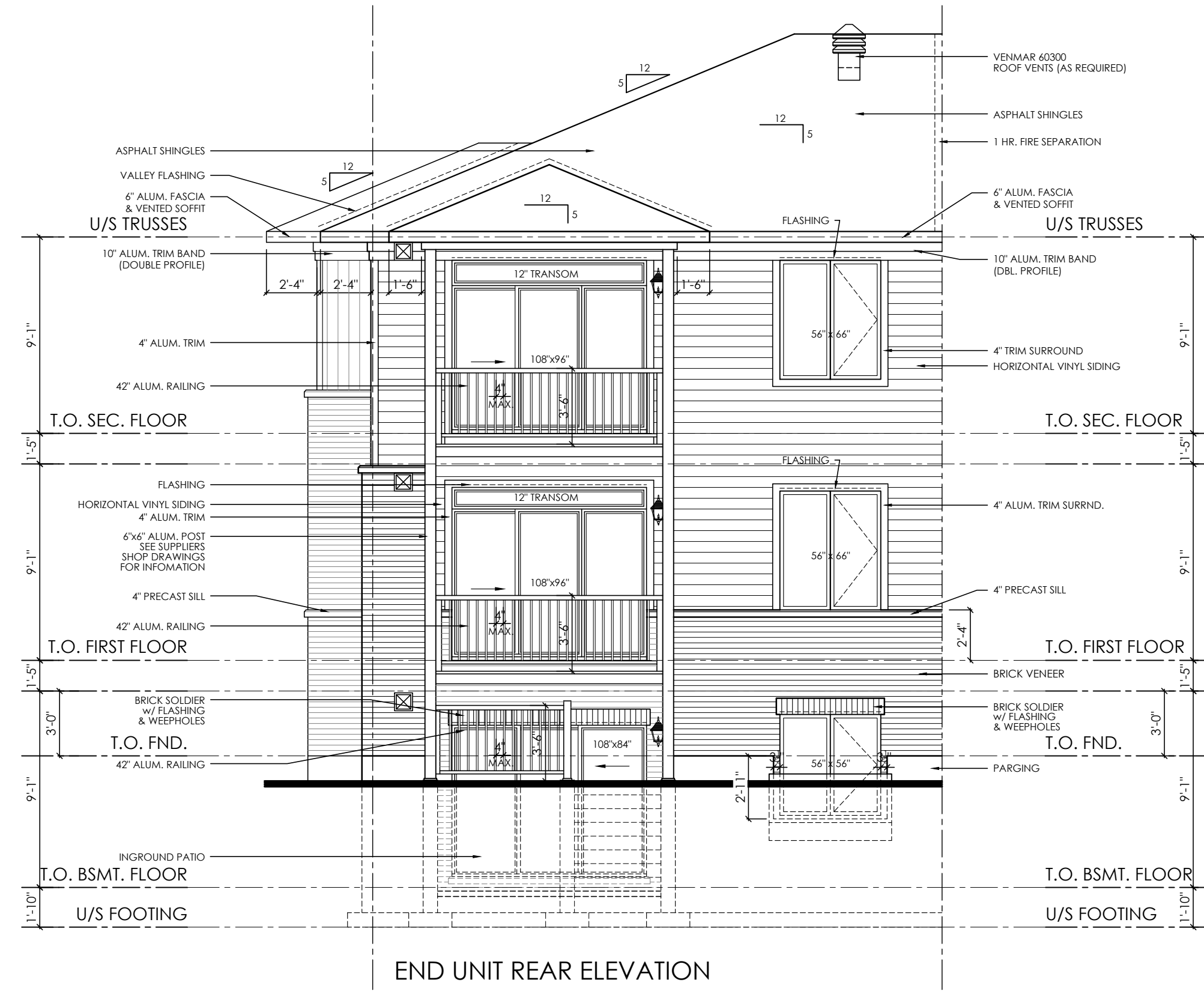
END UNIT - FRONT ELEVATION



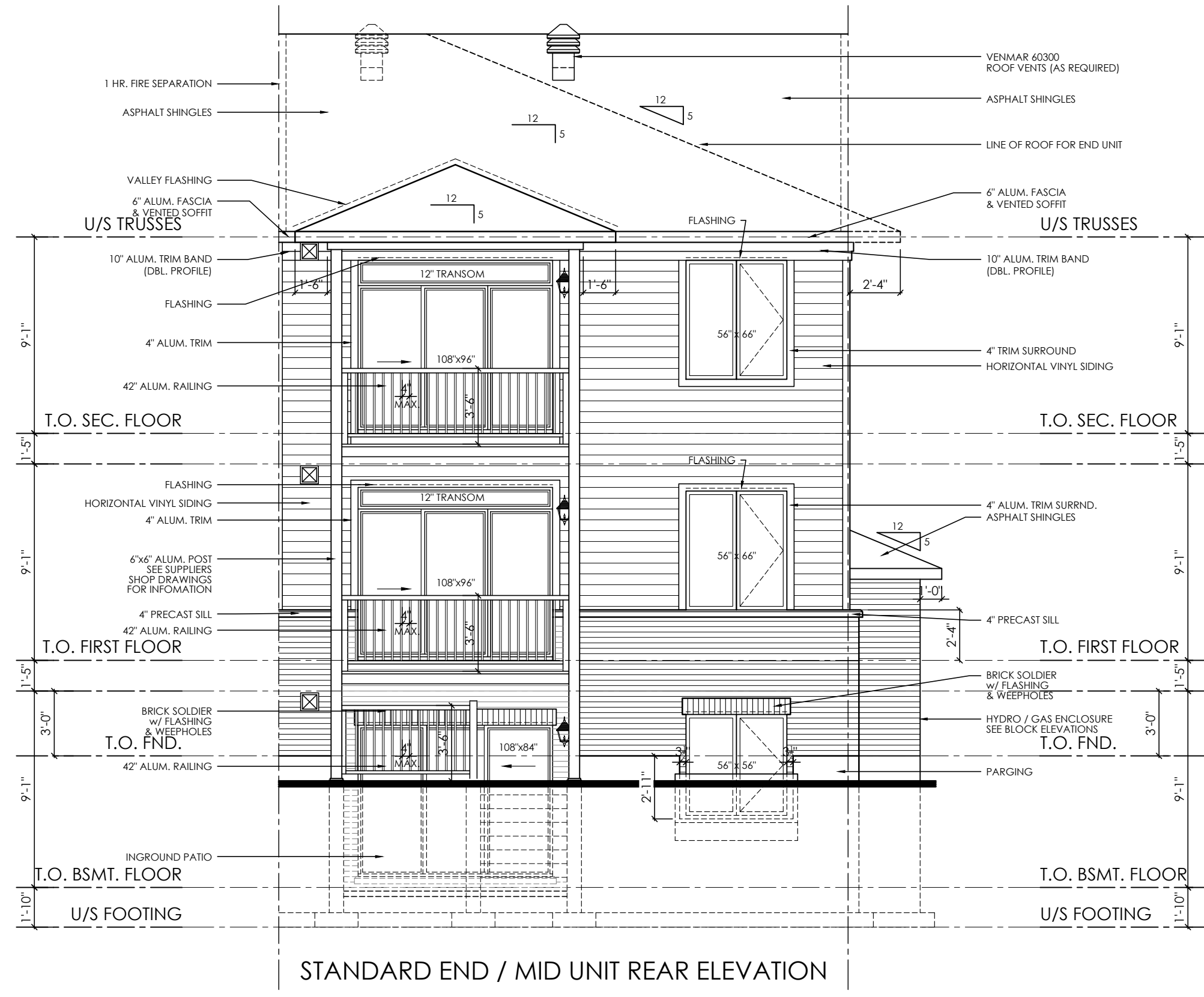
MID UNIT - FRONT ELEVATION



STREET END UNIT - FRONT ELEVATION



END UNIT REAR ELEVATION



STANDARD END / MID UNIT REAR ELEVATION

M. David Blakely
Architect Inc.
2200 Prince of Wales Dr. - Suite 101
Ottawa, Ontario K2E 6Z9
Phone (613) 226-8811 Fax (613) 226-7942

GENERAL NOTES:

1. THE CONTRACTOR IS RESPONSIBLE FOR CHECKING AND VERIFYING ALL DIMENSIONS. ANY DISCREPANCY MUST BE REPORTED TO M. DAVID BLAKELY ARCHITECT INC.
2. ALL WORK AND MATERIALS TO BE IN COMPLIANCE WITH ALL CODES, REGULATIONS, AND BY-LAWS.
3. ADDITIONAL DRAWINGS MAY BE ISSUED FOR CLARIFICATION TO ASSIST THE PROPER EXECUTION OF WORK. SUCH DRAWINGS WILL HAVE THE SAME MEANING AND INTENT AS IF THEY WERE INCLUDED WITH THE PLANS IN CONTRACT DOCUMENTS.
4. DO NOT SCALE DRAWINGS.
5. THIS DRAWING SHALL NOT BE USED OR COPIED WITHOUT THE AUTHORIZATION OF THE ARCHITECT.

6. THIS DRAWING SHALL NOT BE USED FOR PERMIT OR CONSTRUCTION UNLESS THE DRAWING BEARS THE ARCHITECT'S SEAL AND SIGNATURE.

7. THIS REPRODUCTION SHALL NOT BE ALTERED.

POST SCHEDULE

P1 - 3" DIA. ADJUSTABLE STEEL TELEPOST	8500 POUND CAP. (MIN.)
P2 - 2"x4" OR 8" (AS APPLICABLE)	
P3 - 3"x4" OR 8" (AS APPLICABLE)	
P4 - 4"x4" OR 8" (AS APPLICABLE)	
P5 - 5"x4" OR 8" (AS APPLICABLE)	
P6 - HSS 3"x3"x1/8" C/W 5"x3/8" B. PL. & CAP PL.	

BRICK LINTEL SCHEDULE

OPENING UP TO	ANGLE SIZE
5'-0"	L 3 1/2"x3 1/2"x5/16"
7'-0"	L 4"x3 1/2"x5/16"
8'-0"	L 5"x3 1/2"x5/16"
9'-0"	L 5"x3 1/2"x3/8"
10'-0"	L 6"x4"x3/8"

ARCHITECT SEAL:

NO.	DATE	DESCRIPTION	REVISED	NO.	DATE	DESCRIPTION	REVISED
11.	15/03/18	FOR MOUNTSHANNON DR. / FOR PERMIT	SM	23.			
10.	24/06/16	AS PER STRUCTURAL / CITY COMMENTS	SM	22.			
9.	25/05/16	FOR PERMIT	SM	21.			
8.	08/03/16	BLOCK 2 - FOR STRUCTURAL REVIEW	SM	20.			
7.	27/11/15	REVISED FOR BLOCK 3	SM	19.			
6.	23/09/15	ISSUED FOR CONSTRUCTION	SM	18.			
5.	18/12/14	BLOCKS 2 & 3 - FOR PERMIT	SM	17.			
4.	15/10/14	GENERAL REV. AS PER BLOCK 1	SM	16.			
3.	27/01/14	REVISED FRONT PORCH - ADDED BRICK	SM	15.			
2.	06/06/13	FOR STRUCTURAL REVIEW	SM	14.			
1.	20/05/13	FOR REVIEW	SM	13.	29/03/21	FOR SITE PLAN - BLOCK 29 KANATA WEST	SM
				12.	15/08/18	REVISED FOUNDATION ELEVATIONS	SM

A - DETAIL NUMBER
B - SHEET NUMBER (DETAIL REQUIRED)
C - SHEET NUMBER (DETAIL LOCATION)

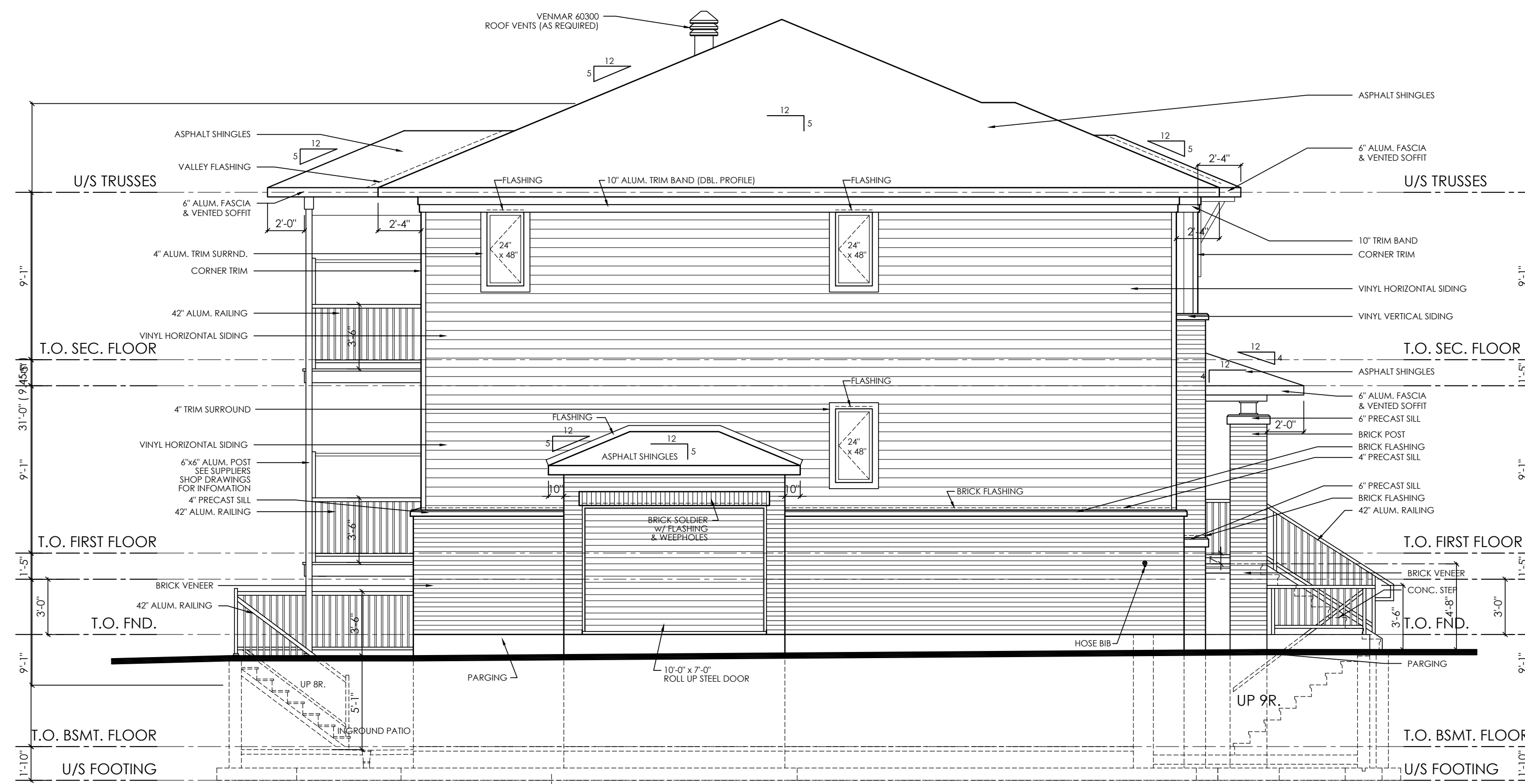
PROJECT: **TERRACE FLATS**
KANATA WEST
1620 MAPLE GROVE - BLOCK 29
OTTAWA, ONT.

CLIENT: **RICH CRAFT**
Group Of Companies

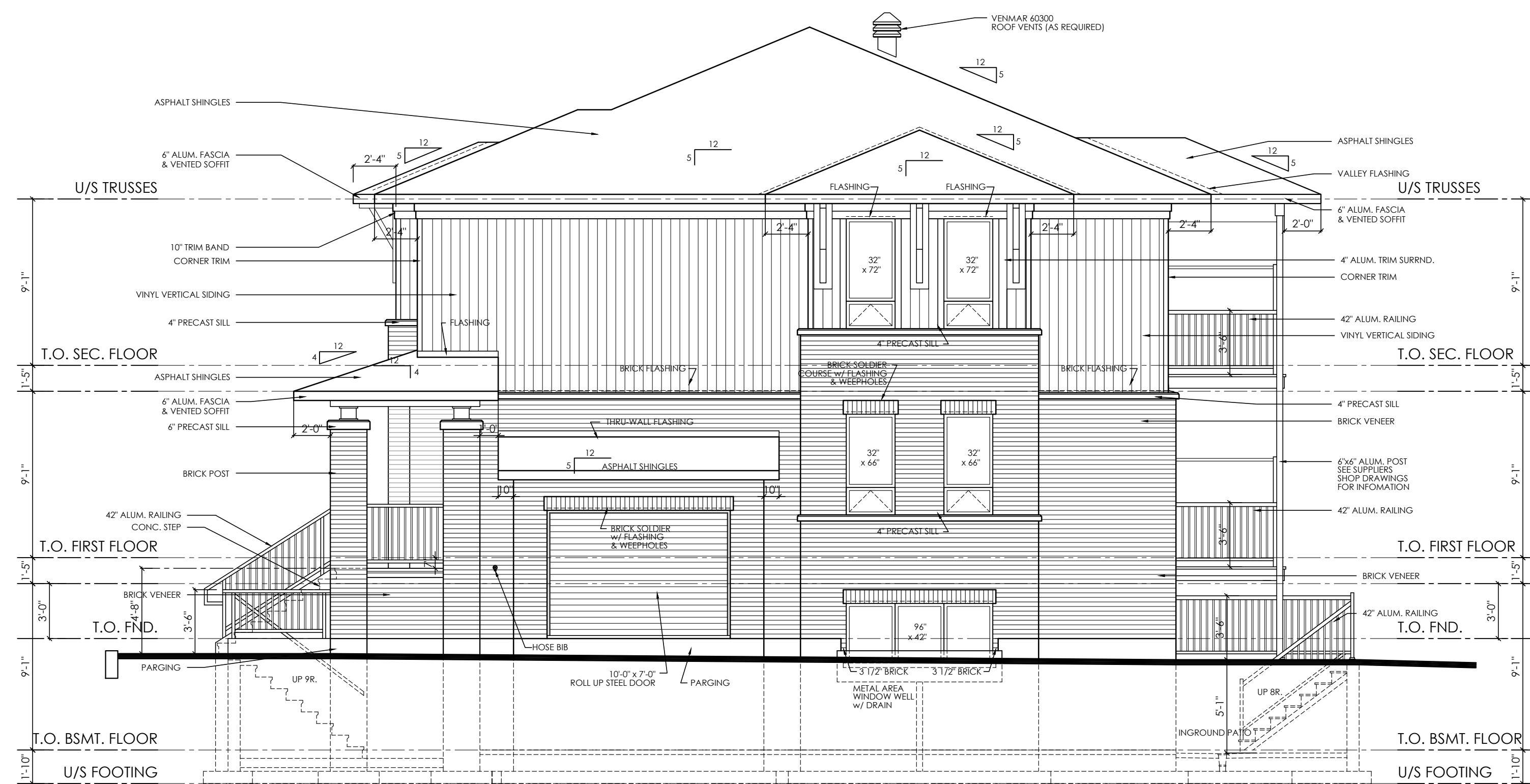
DRAWING TITLE: **ELEVATIONS**

DATE: **MAY, 2013.** SCALE: **3/16" = 1'-0"** SHEET NO.: **A-4**

DRAWN BY: **SBM** CHECKED: **MDB**



END UNIT, SIDE ELEVATION w/ HYDRO/GAS METER ENCLOSURE



STREET END UNIT, SIDE ELEVATION w/ GAS METER ENCLOSURE

**M. David Blakely
Architect Inc.**
2200 Prince of Wales Dr. - Suite 101
Ottawa, Ontario K2E 6Z9
Phone (613) 226-8811 Fax (613) 226-7942

GENERAL NOTES:
1. THE CONTRACTOR IS RESPONSIBLE FOR CHECKING AND VERIFYING ALL DIMENSIONS. ANY DISCREPANCY MUST BE REPORTED TO M. DAVID BLAKELY ARCHITECT INC.
2. ALL WORK AND MATERIALS TO BE IN COMPLIANCE WITH ALL CODES, REGULATIONS, AND BY-LAWS.
3. ADDITIONAL DRAWINGS MAY BE ISSUED FOR CLARIFICATION TO ASSIST THE PROPER EXECUTION OF WORK. SUCH DRAWINGS WILL HAVE THE SAME MEANING AND INTENT AS IF THEY WERE INCLUDED WITH THE PLANS IN CONTRACT DOCUMENTS.
4. DO NOT SCALE DRAWINGS.
5. THIS DRAWING SHALL NOT BE USED OR COPIED WITHOUT THE AUTHORIZATION OF THE ARCHITECT.

6. THIS DRAWING SHALL NOT BE USED FOR PERMIT OR CONSTRUCTION UNLESS THE DRAWING BEARS THE ARCHITECT'S SEAL AND SIGNATURE.
7. THIS REPRODUCTION SHALL NOT BE ALTERED.

POST SCHEDULE

P1 - 3" DIA. ADJUSTABLE STEEL TELEPOST	8500 POUND CAP. (MIN.)
P2 - 2"x4x4 OR 8" (AS APPLICABLE)	
P3 - 3"x4x4 OR 8" (AS APPLICABLE)	
P4 - 4"x4x4 OR 8" (AS APPLICABLE)	
P5 - 5"x4x4 OR 8" (AS APPLICABLE)	
P6 - HSS 3"x3"x1/8" C/W 5"x3/8"x8" B. PL. & CAP PL.	

BRICK LINTEL SCHEDULE

OPENING UP TO	ANGLE SIZE
5'-0"	L 3 1/2"x3 1/2"x5/16"
7'-0"	L 4"x3 1/2"x5/16"
8'-0"	L 5"x3 1/2"x5/16"
9'-0"	L 5"x3 1/2"x3/8"
10'-0"	L 6"x4"x3/8"

ARCHITECT SEAL:

NO.	DATE	DESCRIPTION	INT.	NO.	DATE	DESCRIPTION	INT.
11.	15/03/18	FOR MOUNTSHANNON DR. / FOR PERMIT	SMX	23.			
10.	24/06/16	AS PER STRUCTURAL / CITY COMMENTS	SM	22.			
9.	25/05/16	FOR PERMIT	SM	21.			
8.	08/03/16	FOR STRUCTURAL REVIEW	SM	20.			
7.	27/11/15	REVISED FOR BLOCK 3	SM	19.			
6.	23/09/15	ISSUED FOR CONSTRUCTION	SM	18.			
5.	18/12/14	BLOCKS 2 & 3 - FOR PERMIT	SM	17.			
4.	15/10/14	GENERAL REV. AS PER BLOCK 1	SM	16.			
3.	27/01/14	REVISED FRONT PORCH - ADDED BRICK	SM	15.			
2.	06/06/13	FOR STRUCTURAL REVIEW	SM	14.			
1.	20/05/13	FOR REVIEW	SM	13.	29/03/21	FOR SITE PLAN - BLOCK 29 KANATA WEST	SM
				12.	15/08/18	REVISED FOUNDATION ELEVATIONS	SM

A
B
C

A - DETAIL NUMBER
B - SHEET NUMBER (DETAIL REQUIRED)
C - SHEET NUMBER (DETAIL LOCATION)

PROJECT: **TERRACE FLATS
KANATA WEST
1620 MAPLE GROVE - BLOCK 29
OTTAWA, ONT.**

CLIENT: **RICH CRAFT
Group Of Companies**

DRAWING TITLE: **ELEVATIONS**

DATE: **MAY, 2013.** SCALE: **3/16" = 1'-0"** SHEET NO.: **A-5**

DRAWN BY: **SBM** CHECKED: **MDB**