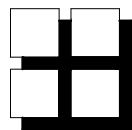


STREET ELEVATION (FRONT)



**M. David Blakely
Architect Inc.**

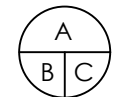
2200 Prince of Wales Dr. Suite 101 Nepean, Ontario
Phone (613) 226-8811 Fax (613) 226-7942

SUBJECT TO THE CONDITIONS, IF ANY, SET FORTH IN
OUR LETTER DATED March 10, 2022. THIS PLAN
IS APPROVED BY
THE CITY OF OTTAWA THIS 10 DAY
OF MARCH, 2022.

Court Curry
COURT CURRY, MANAGER
DEVELOPMENT REVIEW WEST
PLANNING, REAL ESTATE AND ECONOMIC
DEVELOPMENT DEPARTMENT, CITY OF OTTAWA

SEAL:

No.	DATE	DESCRIPTION	INIT.
10.			
9.			
8.			
7.			
6.			
5.			
4.			
3.			
2.	07/10/21	FOR SITE PLAN	SM
1.	29/03/21	FOR SITE PLAN	SM
REVISIONS			



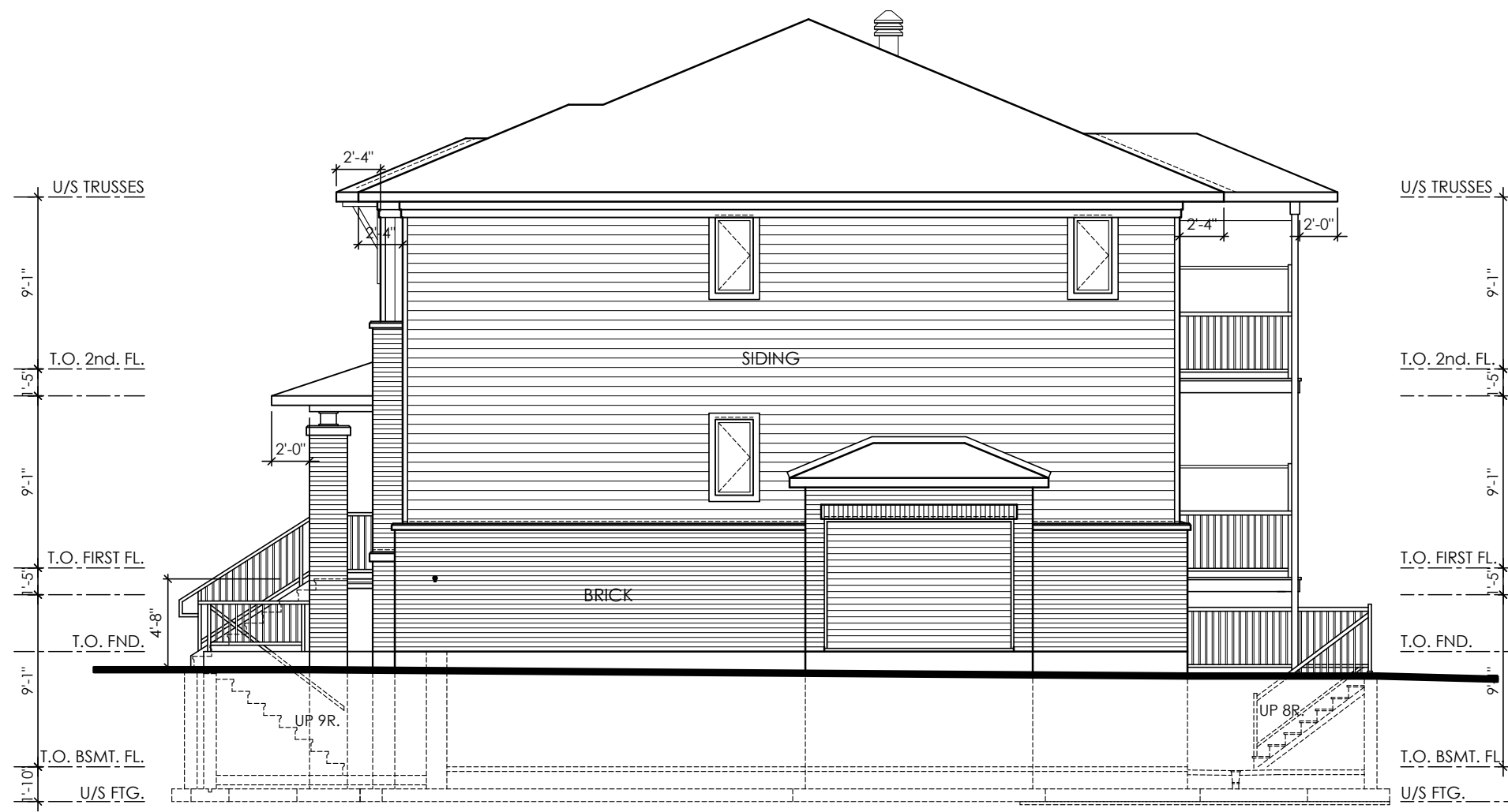
A - DETAIL NUMBER
B - SHEET NUMBER
(DETAIL REQUIRED)
C - SHEET NUMBER
(DETAIL LOCATION)

PROJECT: TERRACE FLATS
KANATA WEST
1620 MAPLE GROVE ~ BLOCK 29
OTTAWA, ONTARIO

CLIENT: **RICH CRAFT**
Group of Companies

DRAWING TITLE: STREET (FRONT) ELEVATION

DATE: MAR, 2021. SCALE: 1/8"=1'-0"
DRAWN BY: SBM CHECKED: MDB SHEET NO.: **A1**



END UNIT REV. UNIT 'A'
 UNIT 'B'
 UNIT 'C'

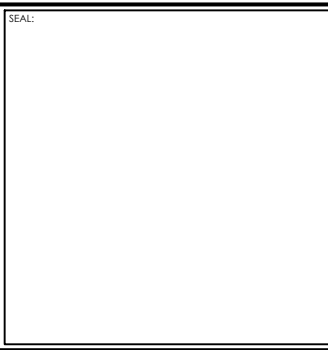
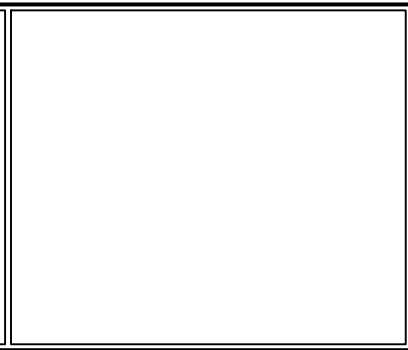
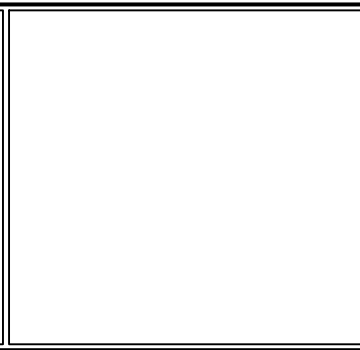
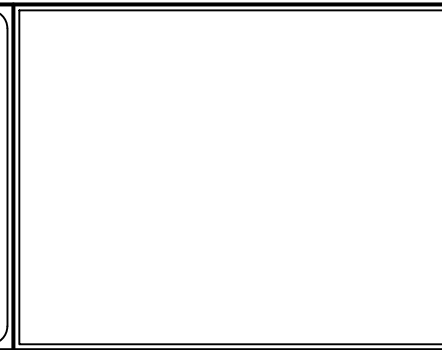
END UNIT, SIDE ELEVATION

SIDE ELEVATION

SUBJECT TO THE CONDITIONS, IF ANY, SET FORTH IN OUR LETTER DATED March 10, 2022, THIS PLAN IS APPROVED BY THE CITY OF OTTAWA THIS 10 DAY OF MARCH, 2022.

Court Curry
 COURT CURRY, MANAGER
 DEVELOPMENT REVIEW WEST
 PLANNING, REAL ESTATE AND ECONOMIC
 DEVELOPMENT DEPARTMENT, CITY OF OTTAWA

**M. David Blakely
 Architect Inc.**
 2200 Prince of Wales Dr. Suite 101 Nepean, Ontario
 Phone (613) 226-8811 Fax (613) 226-7942



No.	DATE	DESCRIPTION	INIT.
10.			
9.			
8.			
7.			
6.			
5.			
4.			
3.			
2.	07/10/21	FOR SITE PLAN	SM
1.	29/03/21	FOR SITE PLAN	SM

SEAL:

<p>A - DETAIL NUMBER B - SHEET NUMBER (DETAIL REQUIRED) C - SHEET NUMBER (DETAIL LOCATION)</p>	PROJECT: TERRACE FLATS KANATA WEST 1620 MAPLE GROVE ~ BLOCK 29 OTTAWA, ONTARIO	
	CLIENT: RICH CRAFT Group of Companies	
	DRAWING TITLE: SIDE ELEVATION	
DATE: MAR, 2021.	SCALE: 1/8"=1'-0"	SHEET NO.: A2
DRAWN BY: SBM	CHECKED: MDB	



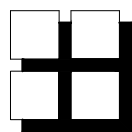
END UNIT
 UNIT 'A'
 UNIT 'B'
 UNIT 'C'

END UNIT, STREET SIDE ELEVATION

STREET SIDE ELEVATION - BLOCKS 1, 3 & 4

SUBJECT TO THE CONDITIONS, IF ANY, SET FORTH IN OUR LETTER DATED March 10, 2022, THIS PLAN IS APPROVED BY THE CITY OF OTTAWA THIS 10 DAY OF MARCH, 2022.

Court Curry
 COURT CURRY, MANAGER
 DEVELOPMENT REVIEW WEST
 PLANNING, REAL ESTATE AND ECONOMIC DEVELOPMENT DEPARTMENT, CITY OF OTTAWA

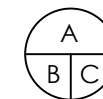


M. David Blakely
 Architect Inc.

2200 Prince of Wales Dr. Suite 101 Nepean, Ontario
 Phone (613) 226-8811 Fax (613) 226-7942

SEAL:

No.	DATE	DESCRIPTION	INIT.
10.			
9.			
8.			
7.			
6.			
5.			
4.			
3.			
2.	07/10/21	FOR SITE PLAN	SM
1.	29/03/21	FOR SITE PLAN	SM
REVISIONS			



A - DETAIL NUMBER
 B - SHEET NUMBER (DETAIL REQUIRED)
 C - SHEET NUMBER (DETAIL LOCATION)

PROJECT: TERRACE FLATS
 KANATA WEST
 1620 MAPLE GROVE ~ BLOCK 29
 OTTAWA, ONTARIO

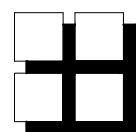
CLIENT: **RICHCRAFT**
 Group of Companies

DRAWING TITLE: STREET SIDE ELEVATION

DATE: MAR, 2021.	SCALE: 1/8"=1'-0"	SHEET NO.:
DRAWN BY: SBM	CHECKED: MDB	A3



REAR ELEVATION



**M. David Blakely
Architect Inc.**

2200 Prince of Wales Dr. Suite 101 Nepean, Ontario
Phone (613) 226-8811 Fax (613) 226-7942

SUBJECT TO THE CONDITIONS, IF ANY, SET FORTH IN
OUR LETTER DATED March 10, 2022, THIS PLAN
IS APPROVED BY
THE CITY OF OTTAWA THIS 10 DAY
OF MARCH, 2022.

Court Curry
COURT CURRY, MANAGER
DEVELOPMENT REVIEW WEST
PLANNING, REAL ESTATE AND ECONOMIC
DEVELOPMENT DEPARTMENT, CITY OF OTTAWA

SEAL:

No.	DATE	DESCRIPTION	INIT.
10.			
9.			
8.			
7.			
6.			
5.			
4.			
3.			
2.	07/10/21	FOR SITE PLAN	SM
1.	29/03/21	FOR SITE PLAN	SM
REVISIONS			



A - DETAIL NUMBER
B - SHEET NUMBER
(DETAIL REQUIRED)
C - SHEET NUMBER
(DETAIL LOCATION)

PROJECT: TERRACE FLATS
KANATA WEST
1620 MAPLE GROVE ~ BLOCK 29
OTTAWA, ONTARIO

CLIENT: **RICH CRAFT**
Group of Companies

DRAWING TITLE: **REAR ELEVATION**

DATE: MAR, 2021. SCALE: 1/8"=1'-0"
DRAWN BY: SBM CHECKED: MDB

SHEET NO.: **A4**