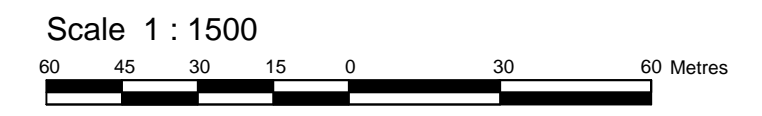


**TOPOGRAPHICAL PLAN OF
PART OF LOTS 28 AND 29
CONCESSION 12**
Geographic Township of Goulbourn
CITY OF OTTAWA

Prepared by Annis , O'Sullivan , Vollebakk Ltd.
June 18, 2018.



Metric
DISTANCES SHOWN ON THIS PLAN ARE IN METRES AND
CAN BE CONVERTED TO FEET BY DIVIDING BY 0.3048

- NOTES:
- ELEVATIONS ARE GEODETIC
 - FIELD WORK COMPLETED JUNE 15, 2018
 - TOS Denotes Top of Slope
 - BOS " Bottom of Slope

LOT 1
 CONCESSION 12
 TOWNSHIP OF MARCH
 GEOGRAPHIC TOWNSHIPS OF MARCH AND GOULBOURN
 MAPLE GROVE ROAD
 GOULBOURN
 CONCESSION 12
 HAZELDEAN ROAD
 LOT 28 AND 29

LOT 28
 CONCESSION 12
 HAZELDEAN ROAD (REGIONAL ROAD NO. 36)
 GOULBOURN
 CONCESSION 12

BLOCK 195
 BLOCK 172 CALLEON LANE
 BLOCK 177 HARMATTAN AVENUE
 BLOCK 178 EDGEVALLEY COURT
 REGISTERED PLAN 4M-1323
 BLOCK 190
 BLOCK 60 REGISTERED PLAN 4M-1486
 SUBJECT TO EASEMENT INST. OC920112
 BLOCK 67 REGISTERED PLAN 4M-1486
 WEST 1/2 OF THE WEST 1/2 LOT 28
 CONCESSION 12 (GOULBOURN)
 LOT 58 LOT 36
 GALLANTRY WAY
 LOT 13
 BLOCK 199
 NORTH/SOUTH ARTERIAL
 BLOCK 98 EAST HALF OF BLOCK 99 THE WEST HALF OF LOT 28
 BLOCK 198
 SUBJECT TO EASEMENT INST. OC1079727
 REGISTERED PLAN 4M-1432
 BLOCK 2
 BLOCK 1
 PART 1 PLAN 4R-23855
 SUBJECT TO EASEMENT INST. OC1079727
 BLOCK 13
 PART 13 PLAN 4R-23855
 SUBJECT TO EASEMENT INST. OC1079727
 BLOCK 6
 BLOCK 9
 PART 6 PLAN 4R-23855
 SUBJECT TO EASEMENT INST. OC1079727
 BLOCK 7 RESERVE PIN 04466-0922
 BLOCK 8 RESERVE PIN 04466-0923
 PART 4R-23855
 SUBJECT TO EASEMENT INST. OC1079727
 BLOCK 3
 SUBJECT TO EASEMENT INST. OC1079727
 BLOCK 4
 BLOCK 5
 BLOCK 6
 BLOCK 7
 BLOCK 8
 BLOCK 9
 BLOCK 10
 BLOCK 11
 BLOCK 12
 BLOCK 13
 BLOCK 14
 BLOCK 15
 BLOCK 16
 BLOCK 17
 BLOCK 18
 BLOCK 19
 BLOCK 20
 BLOCK 21
 BLOCK 22
 BLOCK 23
 BLOCK 24
 BLOCK 25
 BLOCK 26
 BLOCK 27
 BLOCK 28
 BLOCK 29
 BLOCK 30
 BLOCK 31
 BLOCK 32
 BLOCK 33
 BLOCK 34
 BLOCK 35
 BLOCK 36
 BLOCK 37
 BLOCK 38
 BLOCK 39
 BLOCK 40
 BLOCK 41
 BLOCK 42
 BLOCK 43
 BLOCK 44
 BLOCK 45
 BLOCK 46
 BLOCK 47
 BLOCK 48
 BLOCK 49
 BLOCK 50
 BLOCK 51
 BLOCK 52
 BLOCK 53
 BLOCK 54
 BLOCK 55
 BLOCK 56
 BLOCK 57
 BLOCK 58
 BLOCK 59
 BLOCK 60
 BLOCK 61
 BLOCK 62
 BLOCK 63
 BLOCK 64
 BLOCK 65
 BLOCK 66
 BLOCK 67
 BLOCK 68
 BLOCK 69
 BLOCK 70
 BLOCK 71
 BLOCK 72
 BLOCK 73
 BLOCK 74
 BLOCK 75
 BLOCK 76
 BLOCK 77
 BLOCK 78
 BLOCK 79
 BLOCK 80
 BLOCK 81
 BLOCK 82
 BLOCK 83
 BLOCK 84
 BLOCK 85
 BLOCK 86
 BLOCK 87
 BLOCK 88
 BLOCK 89
 BLOCK 90
 BLOCK 91
 BLOCK 92
 BLOCK 93
 BLOCK 94
 BLOCK 95
 BLOCK 96
 BLOCK 97
 BLOCK 98
 BLOCK 99
 BLOCK 100
 BLOCK 101
 BLOCK 102
 BLOCK 103
 BLOCK 104
 BLOCK 105
 BLOCK 106
 BLOCK 107
 BLOCK 108
 BLOCK 109
 BLOCK 110
 BLOCK 111
 BLOCK 112
 BLOCK 113
 BLOCK 114 WALKWAY
 BLOCK 115
 BLOCK 116
 BLOCK 117
 BLOCK 118
 BLOCK 119
 BLOCK 120
 BLOCK 121
 BLOCK 122
 BLOCK 123
 BLOCK 124
 BLOCK 125
 BLOCK 126
 BLOCK 127
 BLOCK 128
 BLOCK 129
 BLOCK 130
 BLOCK 131
 BLOCK 132
 BLOCK 133
 BLOCK 134
 BLOCK 135
 BLOCK 136 COMMERCIAL
 BLOCK 137 WATER RESERVE
 BLOCK 138
 BLOCK 139
 BLOCK 140 RESERVE
 BLOCK 141 PARK RESERVE
 BLOCK 142 OPEN SPACE
 BLOCK 143 BLOCK STREET WIDENING
 BLOCK 199 TRANSIT CORRIDOR
 BLOCK 198
 BLOCK 177 HARMATTAN AVENUE
 BLOCK 178 EDGEVALLEY COURT
 REGISTERED PLAN 4M-1323
 BLOCK 60 REGISTERED PLAN 4M-1486
 SUBJECT TO EASEMENT INST. OC920112
 BLOCK 67 REGISTERED PLAN 4M-1486
 WEST 1/2 OF THE WEST 1/2 LOT 28
 CONCESSION 12 (GOULBOURN)
 LOT 58 LOT 36
 GALLANTRY WAY
 LOT 13
 BLOCK 199
 NORTH/SOUTH ARTERIAL
 BLOCK 98 EAST HALF OF BLOCK 99 THE WEST HALF OF LOT 28
 BLOCK 198
 SUBJECT TO EASEMENT INST. OC1079727
 REGISTERED PLAN 4M-1432
 BLOCK 2
 BLOCK 1
 PART 1 PLAN 4R-23855
 SUBJECT TO EASEMENT INST. OC1079727
 BLOCK 13
 PART 13 PLAN 4R-23855
 SUBJECT TO EASEMENT INST. OC1079727
 BLOCK 6
 BLOCK 9
 PART 6 PLAN 4R-23855
 SUBJECT TO EASEMENT INST. OC1079727
 BLOCK 7 RESERVE PIN 04466-0922
 BLOCK 8 RESERVE PIN 04466-0923
 PART 4R-23855
 SUBJECT TO EASEMENT INST. OC1079727
 BLOCK 3
 SUBJECT TO EASEMENT INST. OC1079727
 BLOCK 4
 BLOCK 5
 BLOCK 6
 BLOCK 7
 BLOCK 8
 BLOCK 9
 BLOCK 10
 BLOCK 11
 BLOCK 12
 BLOCK 13
 BLOCK 14
 BLOCK 15
 BLOCK 16
 BLOCK 17
 BLOCK 18
 BLOCK 19
 BLOCK 20
 BLOCK 21
 BLOCK 22
 BLOCK 23
 BLOCK 24
 BLOCK 25
 BLOCK 26
 BLOCK 27
 BLOCK 28
 BLOCK 29
 BLOCK 30
 BLOCK 31
 BLOCK 32
 BLOCK 33
 BLOCK 34
 BLOCK 35
 BLOCK 36
 BLOCK 37
 BLOCK 38
 BLOCK 39
 BLOCK 40
 BLOCK 41
 BLOCK 42
 BLOCK 43
 BLOCK 44
 BLOCK 45
 BLOCK 46
 BLOCK 47
 BLOCK 48
 BLOCK 49
 BLOCK 50
 BLOCK 51
 BLOCK 52
 BLOCK 53
 BLOCK 54
 BLOCK 55
 BLOCK 56
 BLOCK 57
 BLOCK 58
 BLOCK 59
 BLOCK 60
 BLOCK 61
 BLOCK 62
 BLOCK 63
 BLOCK 64
 BLOCK 65
 BLOCK 66
 BLOCK 67
 BLOCK 68
 BLOCK 69
 BLOCK 70
 BLOCK 71
 BLOCK 72
 BLOCK 73
 BLOCK 74
 BLOCK 75
 BLOCK 76
 BLOCK 77
 BLOCK 78
 BLOCK 79
 BLOCK 80
 BLOCK 81
 BLOCK 82
 BLOCK 83
 BLOCK 84
 BLOCK 85
 BLOCK 86
 BLOCK 87
 BLOCK 88
 BLOCK 89
 BLOCK 90
 BLOCK 91
 BLOCK 92
 BLOCK 93
 BLOCK 94
 BLOCK 95
 BLOCK 96
 BLOCK 97
 BLOCK 98
 BLOCK 99
 BLOCK 100
 BLOCK 101
 BLOCK 102
 BLOCK 103
 BLOCK 104
 BLOCK 105
 BLOCK 106
 BLOCK 107
 BLOCK 108
 BLOCK 109
 BLOCK 110
 BLOCK 111
 BLOCK 112
 BLOCK 113
 BLOCK 114 WALKWAY
 BLOCK 115
 BLOCK 116
 BLOCK 117
 BLOCK 118
 BLOCK 119
 BLOCK 120
 BLOCK 121
 BLOCK 122
 BLOCK 123
 BLOCK 124
 BLOCK 125
 BLOCK 126
 BLOCK 127
 BLOCK 128
 BLOCK 129
 BLOCK 130
 BLOCK 131
 BLOCK 132
 BLOCK 133
 BLOCK 134
 BLOCK 135
 BLOCK 136 COMMERCIAL
 BLOCK 137 WATER RESERVE
 BLOCK 138
 BLOCK 139
 BLOCK 140 RESERVE
 BLOCK 141 PARK RESERVE
 BLOCK 142 OPEN SPACE
 BLOCK 143 BLOCK STREET WIDENING