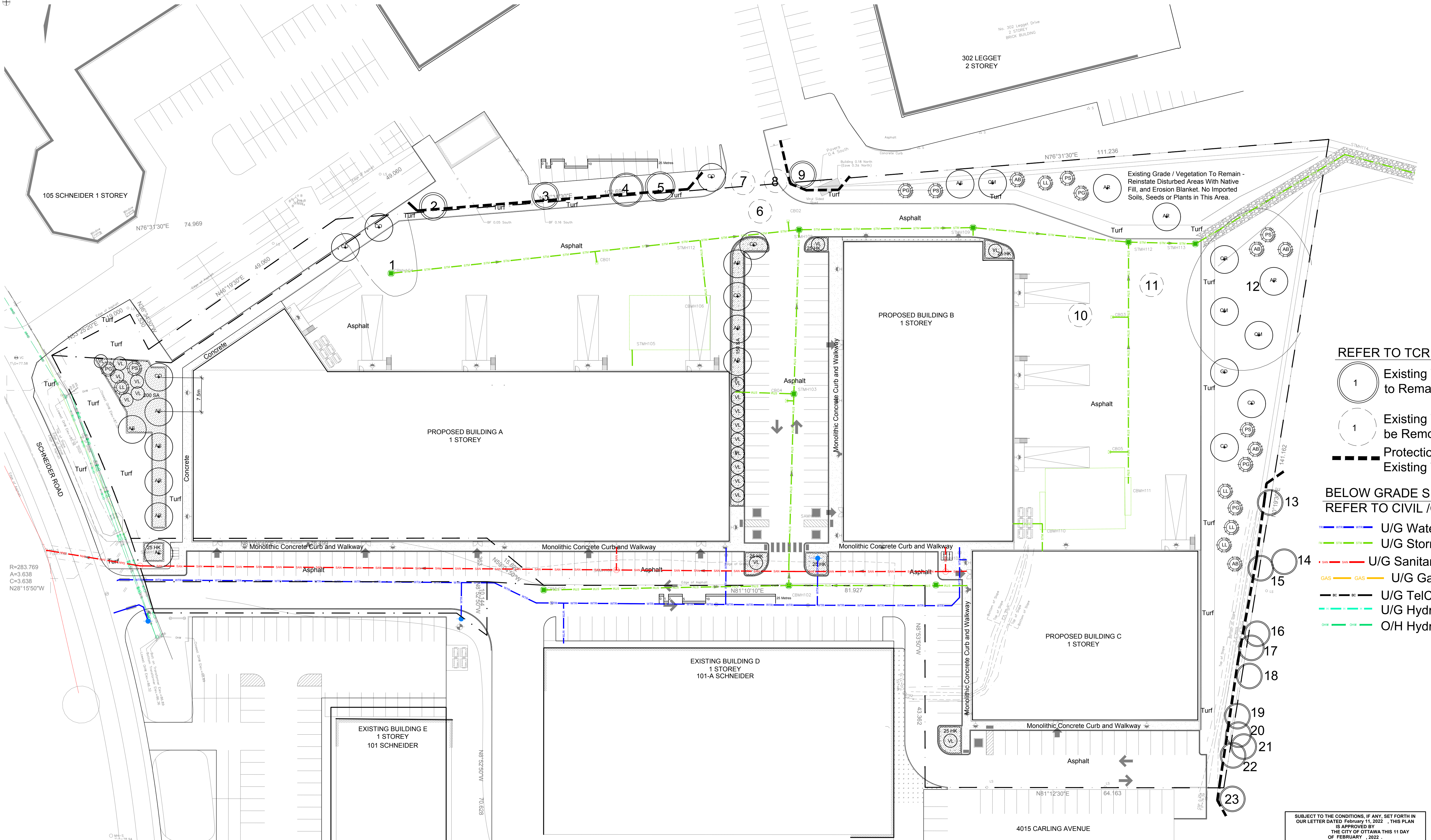


Drawing Remains the Property of/Copyright Reserved by Gino J. Aiello Landscape Architect. Do Not Use or Reproduce Without Approval of Gino J. Aiello.
NOT To Be Used For Construction Unless indicated by Revision: **"FOR LANDSCAPE CONSTRUCTION"**.
Contractor is Responsible for Verification of Site Locations of all Utilities. Report any Discrepancies Between Site and Drawing Immediately to Gino J. Aiello. Do NOT Proceed Until Clarified.
 TURF AREAS TO BE SOD C/W 150MM DEPTH TOPSOIL ON APPROVED SUBGRADE | SOD TO BE #1 GRADE TURFGRASS NURSERY SOD per NSGA - Fine Fescue/Kentucky Bluegrass Sod | PLANTING MIX TO BE APPROVED BY LANDSCAPE ARCHITECT | PLANT MATERIAL TO MEET CNLA STANDARDS/BE APPROVED BY LANDSCAPE ARCHITECT PRIOR TO PLANTING | ALL MATERIALS & WORK TO BE MAINTAINED UNTIL FINAL ACCEPTANCE. (MOWING TURF, WEEDING BEDS, WATERING TURF & PLANTS) & INCLUDE 1 YEAR WARRANTY FROM DATE OF FINAL ACCEPTANCE | PROVIDE WATERING OF ALL PLANT MATERIAL AS REQUIRED FOR PROPER ESTABLISHMENT, UNTIL END OF WARRANTY PERIOD | REFER TO CIVIL ENGINEER'S DRAWING FOR ELEVATIONS / GRADING |
 The Landscape Plan is to be read in conjunction with the grading, servicing, site and survey plan | Bare root material to be planted in season only | All plant material locations to be staked on site by the landscape contractor and checked by the landscape architect prior to planting | All trees to be preserved on or directly adjacent to the site will be protected | Plant material are to be installed a minimum of, 3.0m away from any part of any hydro transformer, 3.0m corridor between a fire hydrant and the curb, a 2.5m radius beside or behind a fire hydrant, 2.0m from any servicing/utility line or structure |



REFER TO TCR BY IFS LANDSCAPE PLAN LEGEND

- Existing Tree to Remain
- Existing Tree to be Removed
- Protection for Existing Trees
- Proposed Coniferous Tree
- Proposed Deciduous Tree
- Proposed Planting Bed

BELOW GRADE SERVICES REFER TO CIVIL /CUP

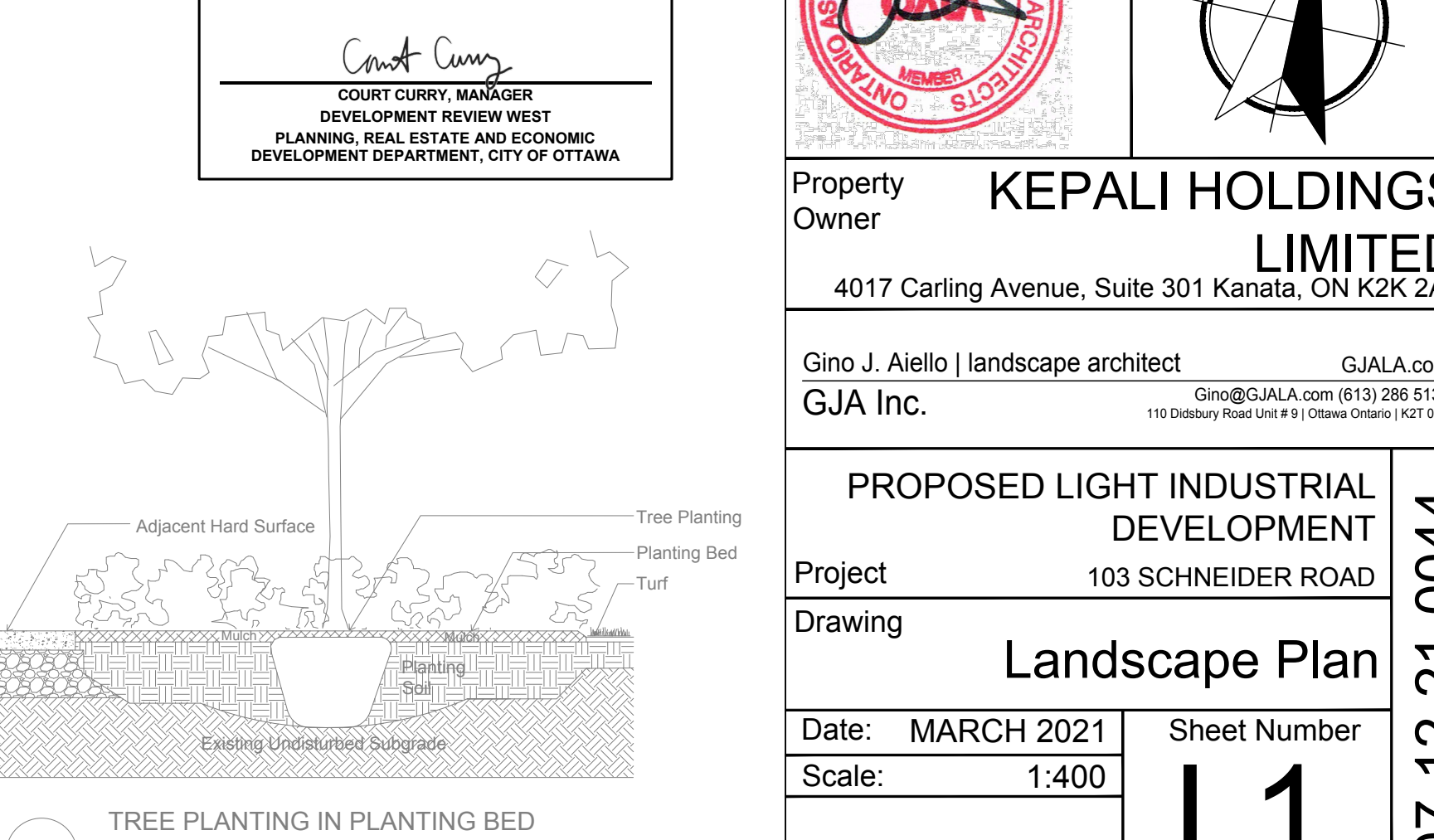
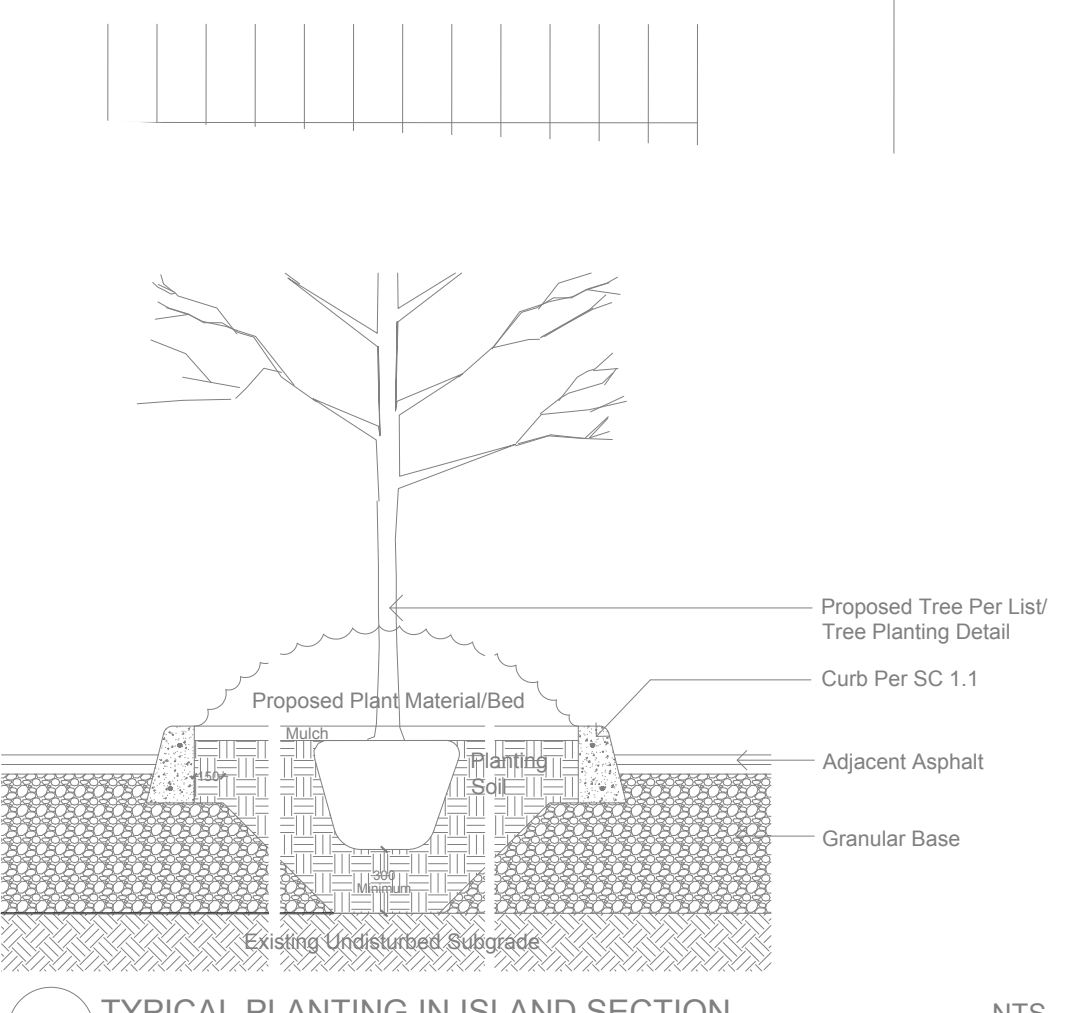
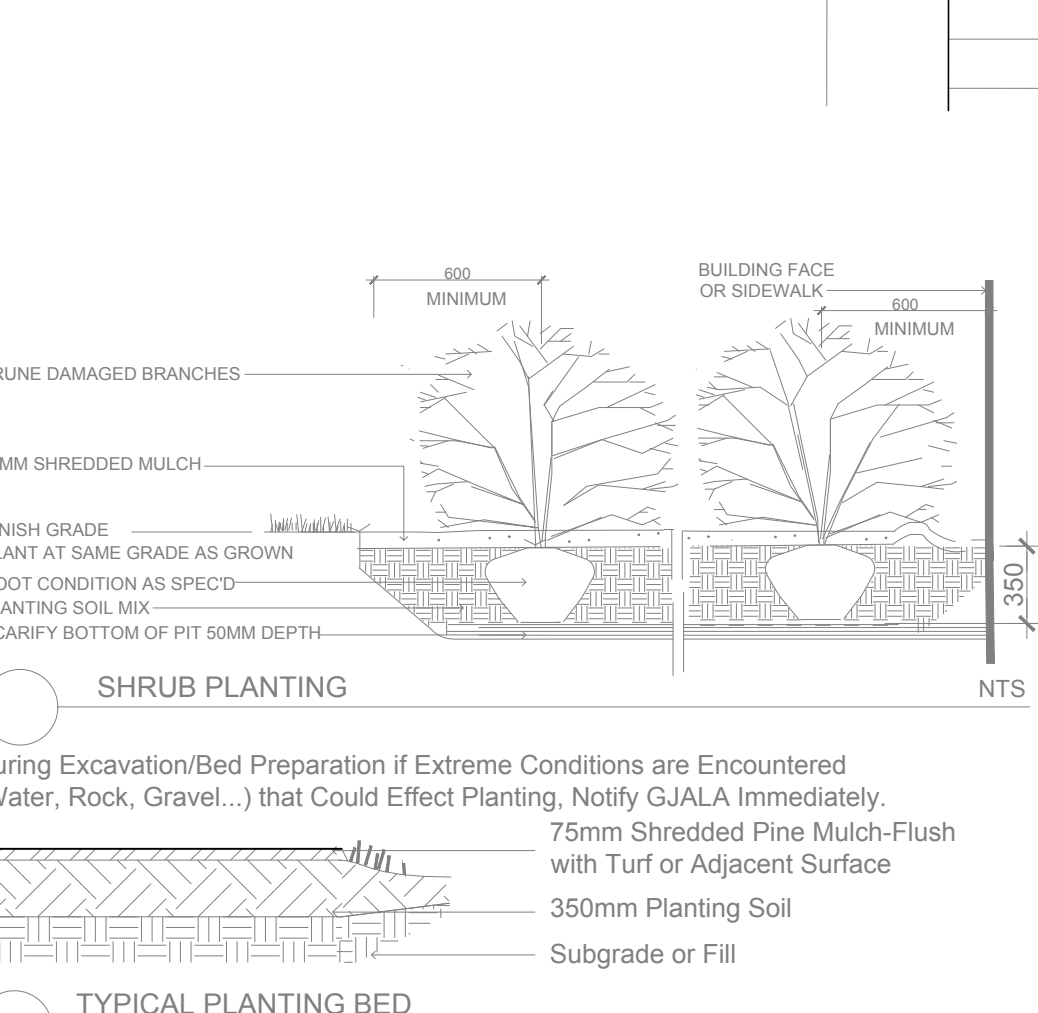
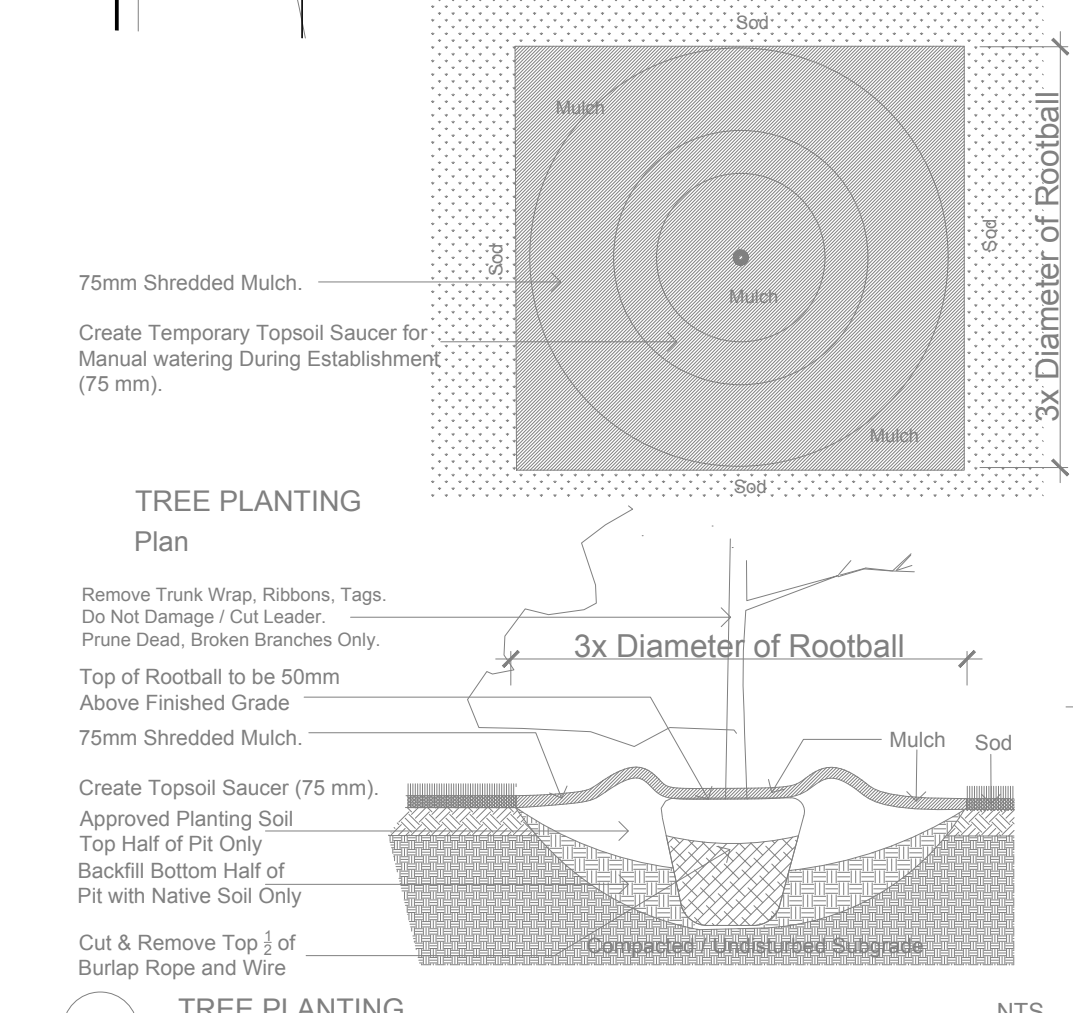
- U/G Water Service
- U/G Storm Service
- U/G Sanitary Service
- U/G Gas Service
- U/G TelCo Service
- U/G Hydro Service
- O/H Hydro Service
- PS-76-101-TP- Circum Bike Rack by HAUSER Anchor to Concrete
- Catch Basin CB/Manhole
- Fire Hydrant
- FD Siamese Connection

TREES 103 SCHNEIDER ROAD KANATA

Code	Qty.	Botanical Name	Common Name	Size	Condition
AC	1	Amelanchier canadensis	Serviceberry	50mm cal	B + B specimen
AR	8	Acer rubrum	Red Maple	70mm cal	B + B specimen
AS	4	Acer saccharum	Sugar Maple	70mm cal	B + B specimen
CO	8	Celtis occidentalis	Common Hackberry	60mm cal	B + B specimen
GD	1	Gymnocladus dioicus	Kentucky Coffee Tree	60mm cal	B + B specimen
QM	3	Quercus macrocarpa	Burr Oak	60mm cal	B + B specimen
QR	1	Quercus rubra	Red Oak	60mm cal	B + B specimen

SHRUBS 103 SCHNEIDER ROAD KANATA

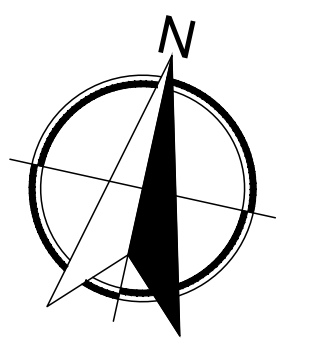
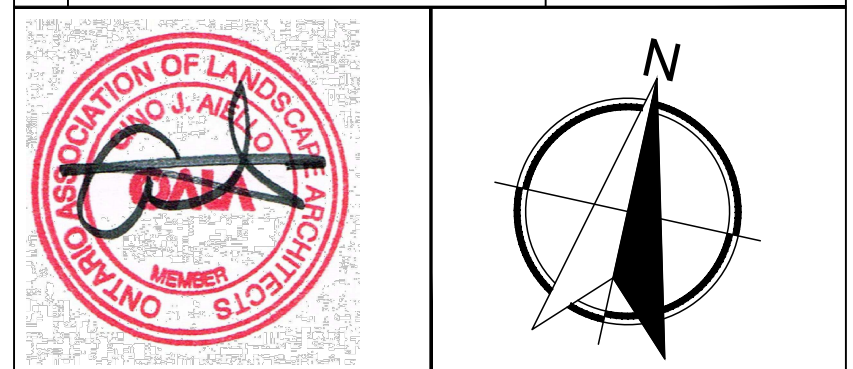
Code	Qty.	Botanical Name	Common Name	Size	Condition
AB	5	Abies balsamea	Balsam Fir	2.0m Ht.	B + B specimen
LL	5	Larix laricina	Eastern Larch / Tamarack	1.75m Ht.	B + B specimen
PG	5	Picea glauca	White Spruce	2.25m Ht.	B + B specimen
PS	5	Pinus strobus	White Pine	1.5m Ht.	B + B specimen



SUBJECT TO THE CONDITIONS, IF ANY, SET FORTH IN OUR LETTER DATED February 11, 2022. THIS PLAN IS APPROVED BY THE CITY OF OTTAWA THIS 11 DAY OF FEBRUARY, 2022.

Court Curry
 COURT CURRY, MANAGER
 DEVELOPMENT REVIEW WEST
 PLANNING, REAL ESTATE AND ECONOMIC DEVELOPMENT DEPARTMENT, CITY OF OTTAWA

No.	Revision	Date
3	THIRD SUBMISSION SPC	SEPTEMBER 21 2021
1	FIRST SUBMISSION SPC	APRIL 1 2021
0	FOR COORDINATION / REVIEW	MARCH 2021



Property Owner **KEPALI HOLDINGS LIMITED**
 4017 Carling Avenue, Suite 301 Kanata, ON K2K 2A3

Gino J. Aiello | landscape architect GJALA.com
 GJA Inc. Gino@GJALA.com (613) 286 5130
 110 Dabney Road Unit # 9 | Ottawa Ontario | K2T 0C2

PROPOSED LIGHT INDUSTRIAL DEVELOPMENT
 Project 103 SCHNEIDER ROAD
 Drawing **Landscape Plan**
 Date: MARCH 2021 Sheet Number **L1**
 Scale: 1:400

D07-12-21-0044