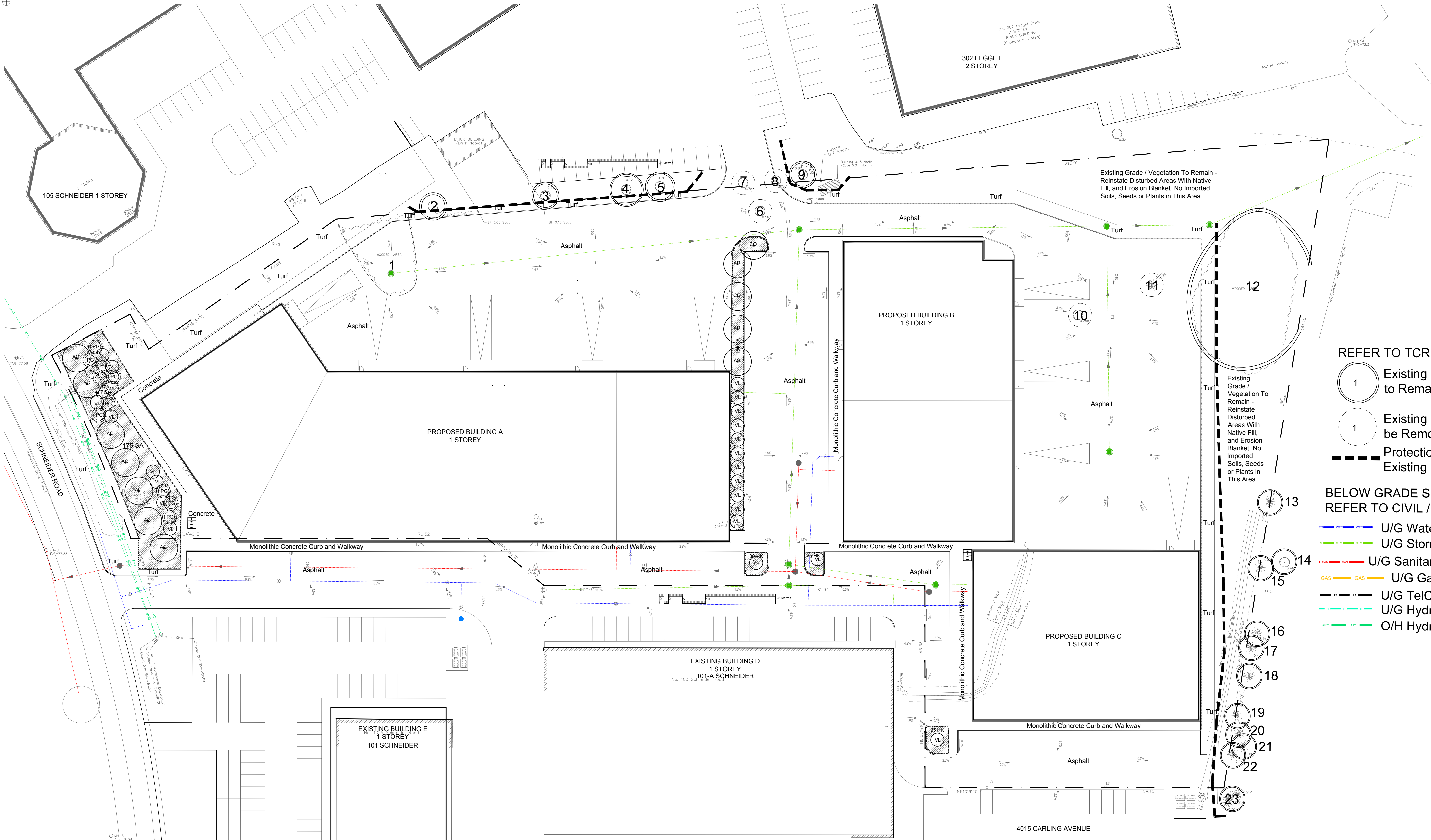
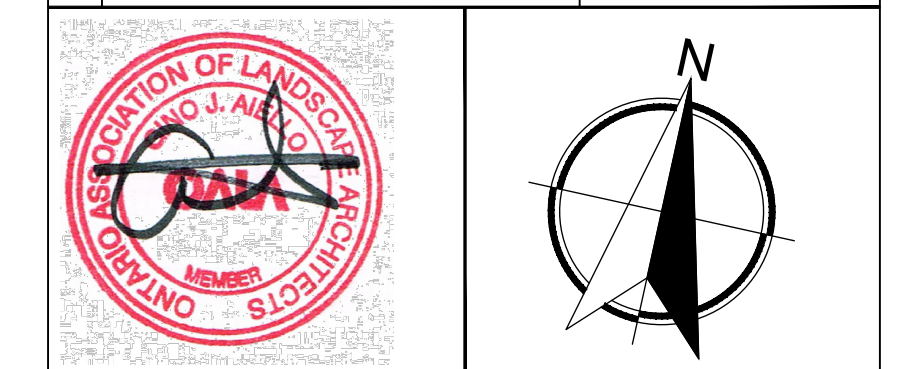


Drawing Remains the Property of/Copyright Reserved by Gino J. Aiello Landscape Architect. Do Not Use or Reproduce Without Approval of Gino J. Aiello.
NOT To Be Used For Construction Unless indicated by Revision: **"FOR LANDSCAPE CONSTRUCTION"**.
Contractor is Responsible for Verification of Site Locations of all Utilities. Report any Discrepancies Between Site and Drawing Immediately to Gino J. Aiello. Do NOT Proceed Until Clarified.
 TURF AREAS TO BE SOD C/W 150MM DEPTH TOPSOIL ON APPROVED SUBGRADE | SOD TO BE #1 GRADE TURFGRASS NURSERY SOD per NSGA - Fine Fescue/Kentucky Bluegrass Sod | PLANTING MIX TO BE APPROVED BY LANDSCAPE ARCHITECT | PLANT MATERIAL TO MEET CNLA STANDARDS/BE APPROVED BY LANDSCAPE ARCHITECT PRIOR TO PLANTING | ALL MATERIALS & WORK TO BE MAINTAINED UNTIL FINAL ACCEPTANCE. (MOWING TURF, WEEDING BEDS, WATERING TURF & PLANTS) & INCLUDE 1 YEAR WARRANTY FROM DATE OF FINAL ACCEPTANCE | PROVIDE WATERING OF ALL PLANT MATERIAL AS REQUIRED FOR PROPER ESTABLISHMENT, UNTIL END OF WARRANTY PERIOD | REFER TO CIVIL ENGINEER'S DRAWING FOR ELEVATIONS / GRADING |
 The Landscape Plan is to be read in conjunction with the grading, servicing, site and survey plan | Bare root material to be planted in season only | All plant material locations to be staked on site by the landscape contractor and checked by the landscape architect prior to planting | All trees to be preserved on or directly adjacent to the site will be protected | Plant material are to be installed a minimum of, 3.0m away from any part of any hydro transformer, 3.0m corridor between a fire hydrant and the curb, a 2.5m radius beside or behind a fire hydrant, 2.0m from any servicing/utility line or structure |



- REFER TO TCR BY IFS**
- Existing Tree to Remain (1)
 - Existing Tree to be Removed (1)
 - Protection for Existing Trees (dashed line)
 - Proposed Coniferous Tree (PG)
 - Proposed Deciduous Tree (CR)
 - Proposed Planting Bed (hatched area)
 - PS-76-101-TP- Circum Bike Rack by HAUSER Anchor to Concrete
 - Catch Basin CB/Manhole (green square)
 - Fire Hydrant (blue circle)
 - FD Siamese Connection (blue triangle)
- BELOW GRADE SERVICES REFER TO CIVIL /CUP**
- U/G Water Service (blue line)
 - U/G Storm Service (green line)
 - U/G Sanitary Service (red line)
 - U/G Gas Service (yellow line)
 - U/G TelCo Service (black line)
 - U/G Hydro Service (cyan line)
 - O/H Hydro Service (magenta line)

| | | |
|-----|---------------------------|--------------|
| 1 | FIRST SUBMISSION SPC | APRIL 1 2021 |
| 0 | FOR COORDINATION / REVIEW | MARCH 2021 |
| No. | Revision | Date |



Property Owner: **KAPALI HOLDINGS LIMITED**
 4017 Carling Avenue, Suite 301 Kanata, ON K2K 2A3

Gino J. Aiello | landscape architect GJALA.com
 GJA Inc. 110 Dabury Road Unit # 9 | Ottawa Ontario | K2T 0C2

Project: **PROPOSED LIGHT INDUSTRIAL DEVELOPMENT**
 103 SCHNEIDER ROAD

Drawing: **Landscape Plan**

Date: MARCH 2021
 Scale: 1:400
 City of Ottawa
 Dwg - #####

Sheet Number: **L1**
 D07-###-###

TREES 103 SCHNEIDER ROAD KANATA

| Code | Qty. | Botanical Name | Common Name | Size | Condition |
|------|------|------------------------|------------------|----------|----------------|
| AC | 7 | Amelanchier canadensis | Serviceberry | 50mm cal | B + B specimen |
| AR | 2 | Acer rubrum | Red Maple | 70mm cal | B + B specimen |
| AS | 2 | Acer saccharum | Sugar Maple | 70mm cal | B + B specimen |
| CO | 2 | Celtis occidentalis | Common Hackberry | 60mm cal | B + B specimen |
| PG | 12 | Picea glauca | White Spruce | 1.5m Ht. | B + B specimen |

SHRUBS 103 SCHNEIDER ROAD KANATA

| Code | Qty. | Botanical Name | Common Name | Size | Condition |
|------|------|---------------------|-----------------|-----------|-----------|
| HK | 100 | Hypericum kalmianum | St. John's Wort | 30cm Ht. | Pot |
| SA | 325 | Spiraea alba | Meadowsweet | 50cm Ht. | Pot |
| VL | 25 | Viburnum lentago | Nannyberry | 150cm Ht. | Pot |
| PV | 75 | Panicum virgatum | Switch Grass | 9cm Pot | |

