

- GENERAL NOTES:
- All measurements in millimeters unless specified otherwise. Do not scale drawing. All drawings to be read in conjunction with written specifications.
 - Copyright reserved. This drawing is the exclusive property of CSW Landscape Architects Ltd. and shall not be used without the consent thereof.
 - This Drawing may not be used for construction until signed by the landscape architect. It is the responsibility of the contractor to:
 - check and verify all dimensions on site;
 - report all errors and/or omissions to the landscape architect;
 - comply with all pertinent codes and by-laws;
 - check and verify locations of all underground services with all local utilities prior to any digging.
 - Minimum soil volume required for trees:

No.	Revision	Date
11	RE-ISSUED FOR SPA	30 AUG 2024
10	RE-ISSUED FOR SPA	18 APR 2024
9	RE-ISSUED FOR SPA	21 AUG 2023
8	RE-ISSUED FOR SPA	22 FEB 2023
7	RE-ISSUED FOR SPA	15 SEP 2022
6	RE-ISSUED FOR SPA	1 MAR 2022
5	RE-ISSUED FOR SPA	17 DEC 2021
4	ISSUED FOR SPC	21 APR 2021
3	ISSUED FOR SPC	09 APR 2021
2	ISSUED FOR SPA/ COORD.	17 OCT 2020
1	ISSUED FOR SPA/ REZONING	08 AUG 2019

North:

Stamp:

CSW Landscape Architecture
 Urban Design
 Site Planning
 Recreation and Park Planning
 Project Management

319 McRae Avenue, Suite 502, Ottawa, Ontario, K1Z 0B9
 Tel: (613) 729-4536

PBC GROUP

CLV GROUP

Project:
951 Gladstone Avenue & 145 Loretta Avenue North

OTTAWA, ONTARIO

Drawing:
LANDSCAPE SITE PLAN

Scale: 1:400 Date: July 2019

Design By: CM Drawn By: AB

Project Number: 1987-01 Sheet Number: L1.0

Last Save: 8/20/2024 10:27:11 AM
 File Location: Z:\Projects\1987-01 Gladstone And Loretta\Drawing\SPA\1987-01 Gladstone & Loretta (Landscape-PH2) R17.dwg

PLANT LIST					
KEY	BOTANICAL NAME	COMMON NAME	QTY	SIZE	REMARKS
DECIDUOUS TREES					
AL	AMELANCHIER LAEVIS 'SPRING FLURRY'	SPRING FLURRY SERVICEBERRY	6	45mm CAL.	B&B / W.B
PT	POPULUS TREMULOIDES	TREMBLING ASPEN	7	45mm CAL.	B&B / W.B
TC	TILIA CORDATA	LITTLE LEAF LINDEN	2	50mm CAL.	B&B / W.B
UA	ULMUS AMERICANA 'PIONEER'	PIONEER ELM	2	70mm CAL.	B&B / W.B
SHURBS					
	JUNIPERUS HORIZONTALIS 'PLUMOSA COMPACTA'	COMPACT ANDORA JUNIPER	3 GAL. POT.		POT. 750mm O.C.
	JUNIPERUS COMMUNIS 'DEPRESSA AUREA'	CANADIAN GOLDEN JUNIPER	3 GAL. POT.		POT. 900mm O.C.
	SORBARIA SORBIIFOLIA 'SEM'	FALSE SPIREA	500mm HT.		POT. 900mm O.C.
	RHUS AROMATICA 'GRO-LOW'	GRO-LOW FRAGRANT SUMAC	1 GAL. POT.		POT. 600mm O.C.
PERENNIALS AND GRASSES					
	CAREX MUSKINGUMENSIS	PALM SEDGE GRASS	1 GAL. POT.		POT. 600mm O.C.
	DESCHAMPSIA CESPITOSA	TUFTED HAIR GRASS	1 GAL. POT.		POT. 600mm O.C.
	ERANIUM MACULATUM	WILD GERANIUM	1 GAL. POT.		POT. 600mm O.C.
	HELIOS HELIANTHOIDES	FALSE SUNFLOWER	1 GAL. POT.		POT. 600mm O.C.
	RUDBERGIA HIRTA	BLACK-EYED SUSAN	1 GAL. POT.		POT. 600mm O.C.
	SPOROBOLLUS HETEROLEPIAS	PRAIRIE DROPSEED	1 GAL. POT.		POT. 600mm O.C.
	SCHIZACHRYM SCOPARIUM	LITTLE BLUESTEM	1 GAL. POT.		POT. 600mm O.C.

LEGEND

- DECIDUOUS TREE
- CONIFEROUS TREE
- EXISTING CONIFEROUS TREE
- CONCRETE PAVING
- UNIT PAVING TYPE 1
- UNIT PAVING TYPE 2
- PRECAST CONCRETE PLANTER WALL
- PLANTING BED
- GRASS
- BIKE RACKS
- TWSI
- SIGHT LINES 3.0M-5.0M

GENERAL NOTES:

- All measurements in millimeters unless specified otherwise. Do not scale drawing. All drawings to be read in conjunction with written specifications.
- Copyright reserved. This drawing is the exclusive property of CSW Landscape Architects Ltd. and shall not be used without the consent thereof.
- This Drawing may not be used for construction until signed by the landscape architect. It is the responsibility of the contractor to:
 - check and verify all dimensions on site;
 - report all errors and/or omissions to the landscape architect;
 - comply with all pertinent codes and by-laws;
 - check and verify locations of all underground services with all local utilities prior to any digging.
- Minimum soil volume required for trees:

Tree Type / Size	Single Tree Soil Volume (m3)	Multiple Tree Soil Volume (m3/tree)
Ornamental	15	9
Columnar	15	9
Small	20	12
Medium	25	15
Large	30	18
Conifer	25	15

No.	Revision	Date
11	RE-ISSUED FOR SPA	30 AUG 2024
10	RE-ISSUED FOR SPA	18 APR 2024
9	RE-ISSUED FOR SPA	21 AUG 2023
8	RE-ISSUED FOR SPA	22 FEB 2023
7	RE-ISSUED FOR SPA	15 SEP 2022
6	RE-ISSUED FOR SPA	1 MAR 2022
5	RE-ISSUED FOR SPA	17 DEC 2021
4	ISSUED FOR SPC	21 APR 2021
3	ISSUED FOR SPC	09 APR 2021
2	ISSUED FOR SPA/ COORD.	17 OCT 2020
1	ISSUED FOR SPA/ REZONING	08 AUG 2019

North:

Stamp:

CSW Landscape Architecture
 Urban Design
 Site Planning
 Recreation and Park Planning
 Project Management

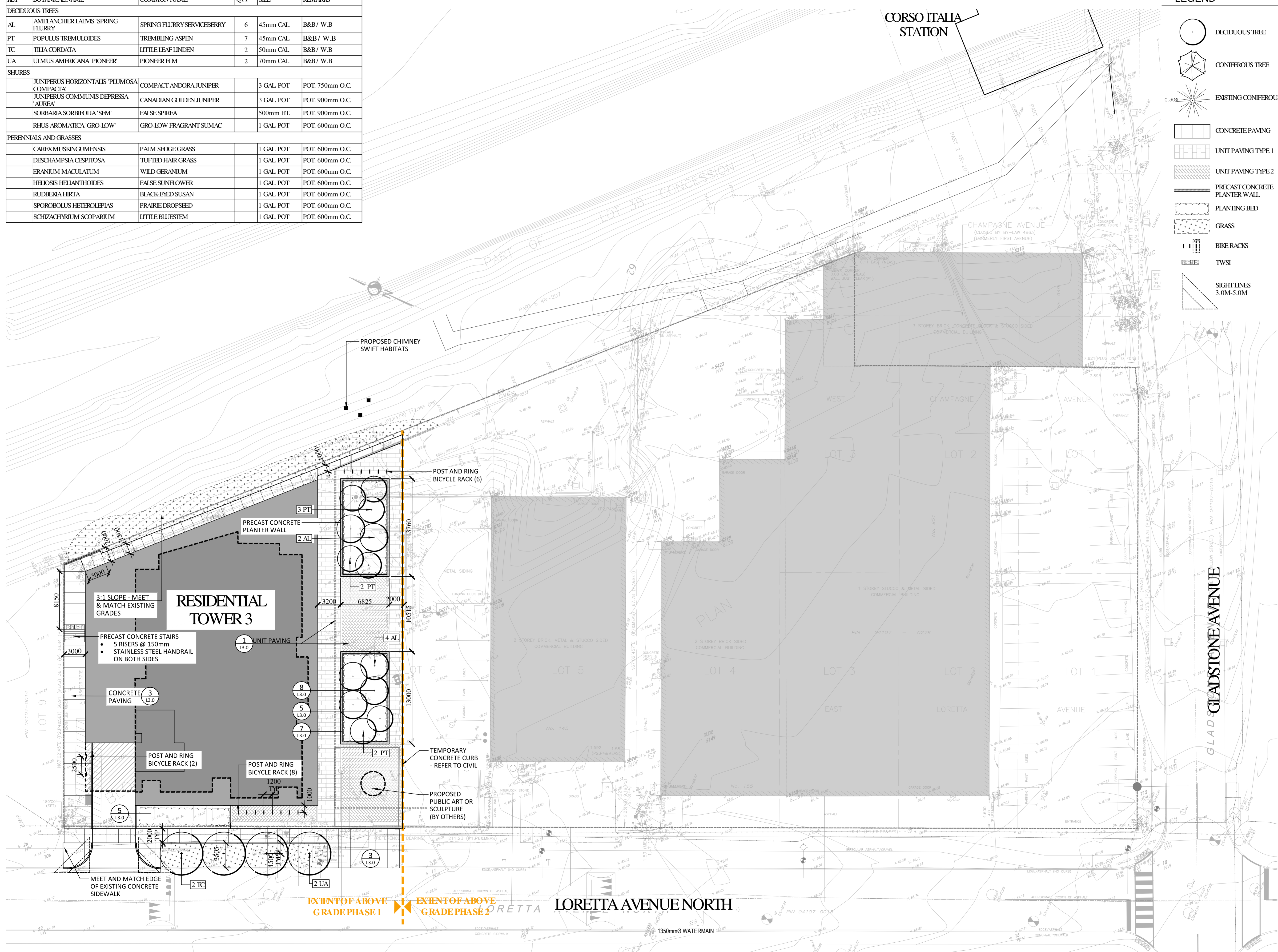
319 McRae Avenue, Suite 502, Ottawa, Ontario, K1Z 0B9
 Tel: (613) 729-4536

PBC GROUP

Project: **951 Gladstone Avenue & 145 Loretta Avenue North**

Ottawa, Ontario
 Drawing: **LANDSCAPE PLAN Phase I**

Scale: 1:250	Date: July 2019
Design By: CM	Drawn By: AB
Project Number: 1987-01	Sheet Number: L2.0



Last Save: 8/20/2024 10:27:11 AM
 File Location: Z:\Projects\1987-01 Gladstone And Loretta\Drawings\SPA\1987-01 Gladstone & Loretta (Landscape-PH2) R17.dwg

LEGEND

- DECIDUOUS TREE
- CONIFEROUS TREE
- EXISTING CONIFEROUS TREE
- CONCRETE PAVING
- UNIT PAVING TYPE 1
- UNIT PAVING TYPE 2
- UNIT PAVING TYPE 3
- RETAINING WALL
- PRECAST CONCRETE SEATING/PLANTER WALL
- PLANTING BED
- GRASS
- BIKE RACKS
- BENCH
- TWSI

GENERAL NOTES:

1. All measurements in millimeters unless specified otherwise. Do not scale drawing. All drawings to be read in conjunction with written specifications.
2. Copyright reserved. This drawing is the exclusive property of CSW Landscape Architects Ltd. and shall not be used without the consent thereof.
3. This Drawing may not be used for construction until signed by the landscape architect. It is the responsibility of the contractor to:
 - check and verify all dimensions on site;
 - report all errors and/or omissions to the landscape architect;
 - comply with all pertinent codes and by-laws;
 - check and verify locations of all underground services with all local utilities prior to any digging.
4. Minimum soil volume required for trees:

Tree Type / Size	Single Tree Soil Volume (m3)	Multiple Tree Soil Volume (m3/tree)
Ornamental	15	9
Columnar	15	9
Small	20	12
Medium	25	15
Large	30	18
Conifer	25	15

No.	Revision	Date
11	RE-ISSUED FOR SPA	30 AUG 2024
10	RE-ISSUED FOR SPA	18 APR 2024
9	RE-ISSUED FOR SPA	21 AUG 2023
8	RE-ISSUED FOR SPA	22 FEB 2023
7	RE-ISSUED FOR SPA	15 SEP 2022
6	RE-ISSUED FOR SPA	1 MAR 2022
5	RE-ISSUED FOR SPA	17 DEC 2021
4	ISSUED FOR SPC	21 APR 2021
3	ISSUED FOR SPC	09 APR 2021
2	ISSUED FOR SPA/ COORD.	17 OCT 2020
1	ISSUED FOR SPA/ REZONING	08 AUG 2019

North:

Stamp:

CSW Landscape Architecture
 Urban Design
 Site Planning
 Recreation and Park Planning
 Project Management

319 McRae Avenue, Suite 502, Ottawa, Ontario, K1Z 0B9
 Tel: (613) 729-4536

PBC GROUP

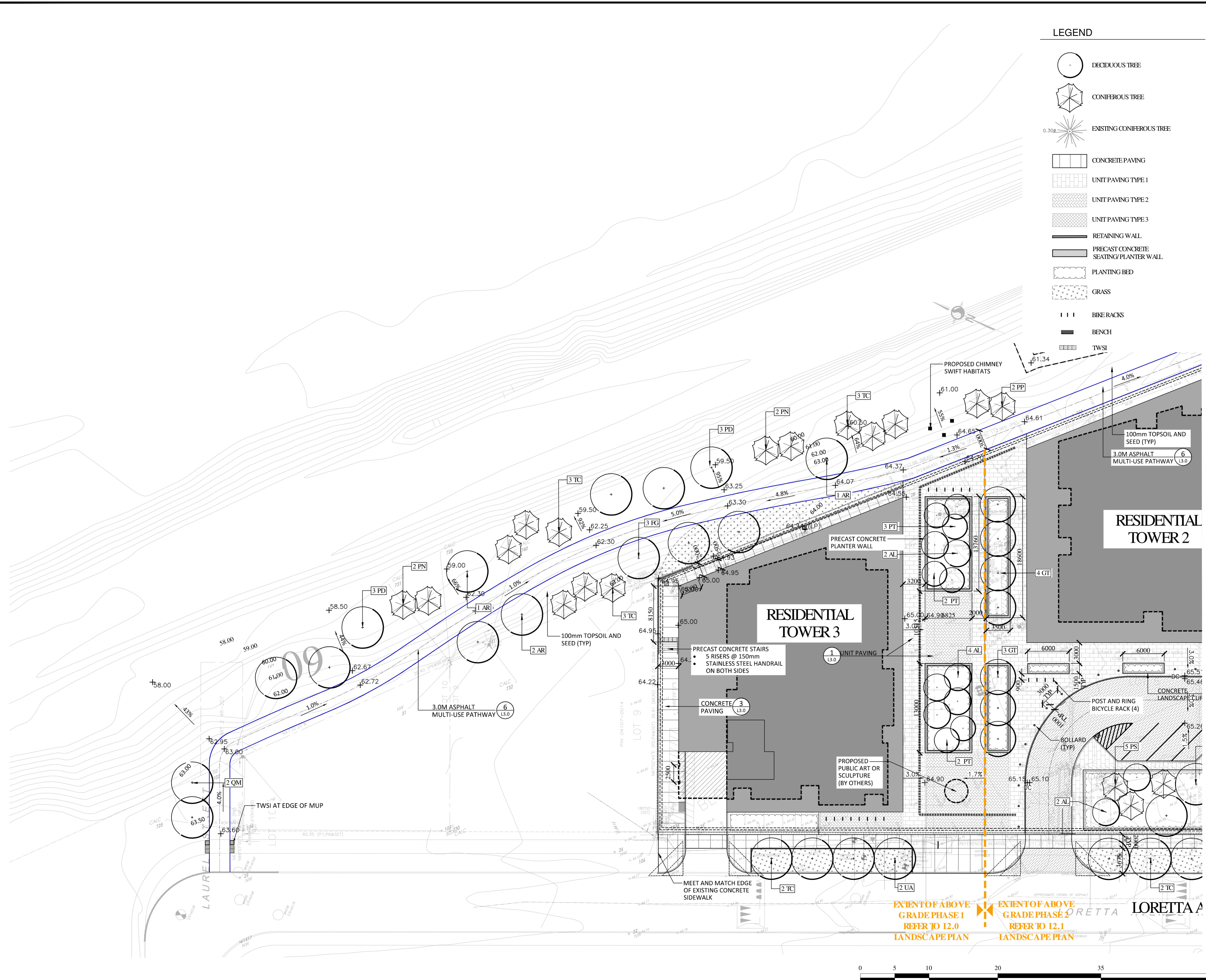
CLV GROUP

Project:
951 Gladstone Avenue & 145 Loretta Avenue North

OTTAWA, ONTARIO

Drawing:
LANDSCAPE PLAN Phase II

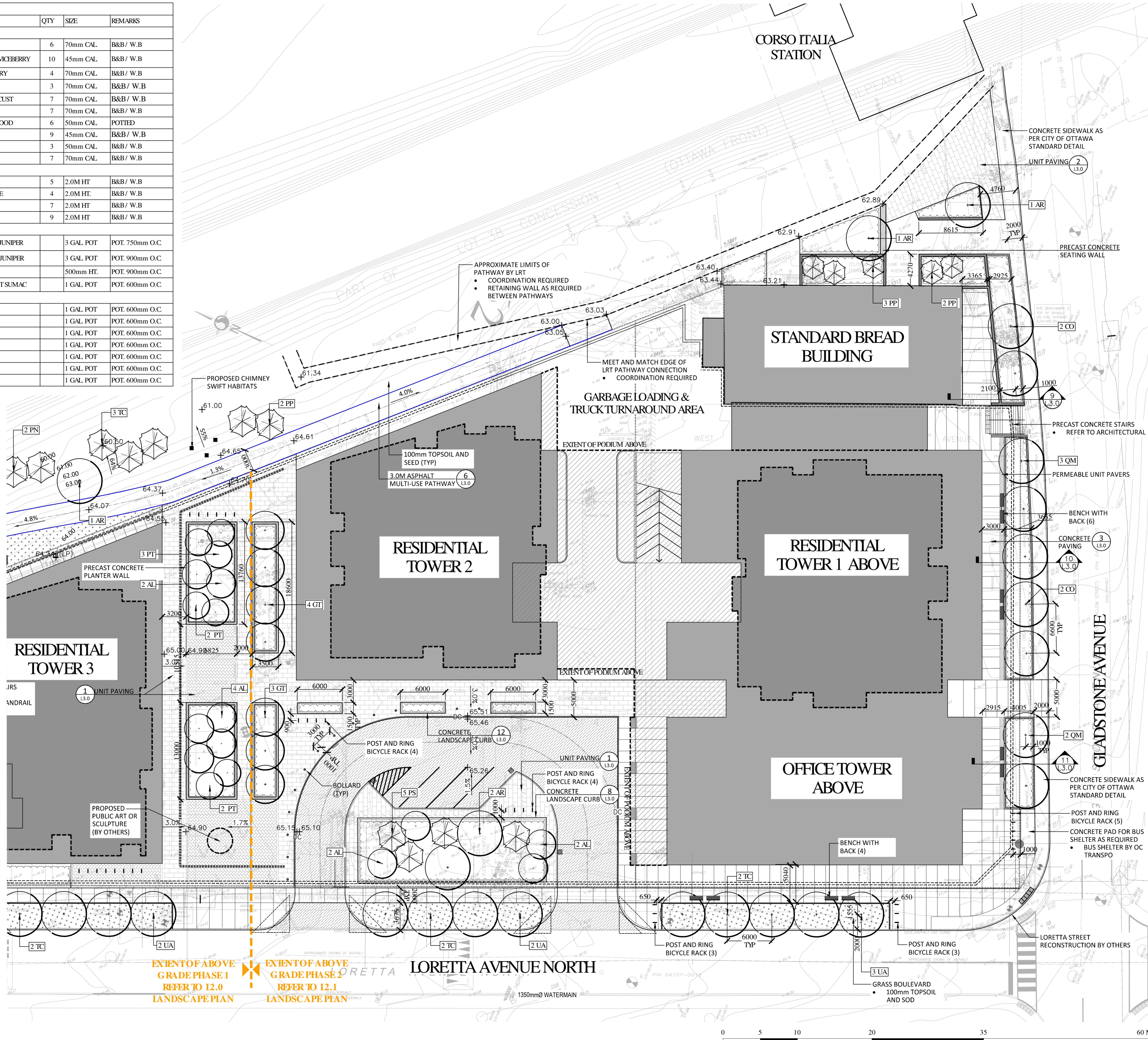
Scale: 1:250	Date: July 2019
Design By: CM	Drawn By: AB
Project Number: 1987-01	Sheet Number: L2.1



D07-12-21-0053

KEY	BOTANICAL NAME	COMMON NAME	QTY	SIZE	REMARKS
DECIDUOUS TREES					
AR	ACER RUBRUM	RED MAPLE	6	70mm CAL.	B&B / W.B
AL	AMELANCHIER LAEVIS 'SPRING FLURRY'	SPRING FLURRY SERVICEBERRY	10	45mm CAL.	B&B / W.B
CO	CELTIS OCCIDENTALIS	COMMON HACKBERRY	4	70mm CAL.	B&B / W.B
FG	FAGUS GRANDIFOLIA	AMERICAN BEECH	3	70mm CAL.	B&B / W.B
GT	GLEDTISIA TRICANTHOS 'IMPERIAL'	IMPERIAL HONEYLOCUST	7	70mm CAL.	B&B / W.B
QM	QUERCUS MACROCARPA	BURR OAK	7	70mm CAL.	B&B / W.B
PD	POPULUS DELTOIDES	EASTERN COTTONWOOD	6	50mm CAL.	POTTED
PT	POPULUS TREMULOIDES	TREMBLING ASPEN	9	45mm CAL.	B&B / W.B
TC	TILIA CORDATA	LITTLE LEAF LINDEN	3	50mm CAL.	B&B / W.B
UA	ULMUS AMERICANA 'PIONEER'	PIONEER ELM	7	70mm CAL.	B&B / W.B
CONIFEROUS TREES					
PS	PINUS SYLVESTRIS	SCOTS PINE	5	2.0M HT.	B&B / W.B
PN	PINUS STROBUS	EASTERN WHITE PINE	4	2.0M HT.	B&B / W.B
PP	PICEA PUNGENS	COLORADO SPRUCE	7	2.0M HT.	B&B / W.B
TC	TSUGA CANADENSIS	EASTERN HEMLOCK	9	2.0M HT.	B&B / W.B
SHURBS					
	JUNIPERUS HORIZONTALIS 'PLUMOSA COMPACTA'	COMPACT ANDORA JUNIPER	3 GAL. POT.		POT: 750mm O.C.
	JUNIPERUS COMMUNIS DEPRESSA 'AUREA'	CANADIAN GOLDEN JUNIPER	3 GAL. POT.		POT: 900mm O.C.
	SORBARIA SORBIFOLIA 'SEM'	FALSE SPIREA	500mm HT.		POT: 900mm O.C.
	RHUS AROMATICA 'GRO-LOW'	GRO-LOW FRAGRANT SUMAC	1 GAL. POT.		POT: 600mm O.C.
PERENNIALS AND GRASSES					
	CAREX MUSKINGUMENSIS	PALM SEDGE GRASS	1 GAL. POT.		POT: 600mm O.C.
	DESCHAMPسيا CESPITOSA	TUFTED HAIR GRASS	1 GAL. POT.		POT: 600mm O.C.
	ERANIMUM MACULATUM	WILD GERANIUM	1 GAL. POT.		POT: 600mm O.C.
	HELIOSIS HELIANTHOIDES	FALSE SUNFLOWER	1 GAL. POT.		POT: 600mm O.C.
	RUDBERGIA HIRTA	BLACK-EYED SUSAN	1 GAL. POT.		POT: 600mm O.C.
	SPOROBOLUS HETEROLEPIAS	PRAIRIE DROPS EED	1 GAL. POT.		POT: 600mm O.C.
	SCHIZACHYRIUM SCOPARIUM	LITTLE BLUESTEM	1 GAL. POT.		POT: 600mm O.C.

LEGEND	
	DECIDUOUS TREE
	CONIFEROUS TREE
	EXISTING CONIFEROUS TREE
	CONCRETE PAVING
	UNIT PAVING TYPE 1
	UNIT PAVING TYPE 2
	UNIT PAVING TYPE 3
	RETAINING WALL
	PRECAST CONCRETE SEATING/PLANTER WALL
	PLANTING BED
	GRASS
	BIKE RACKS
	BENCH
	TWSI
	SIGHT LINES 3.0M-5.0M



GENERAL NOTES:

- All measurements in millimeters unless specified otherwise. Do not scale drawing. All drawings to be read in conjunction with written specifications.
- Copyright reserved. This drawing is the exclusive property of CSW Landscape Architects Ltd. and shall not be used without the consent thereof.
- This Drawing may not be used for construction until signed by the landscape architect. It is the responsibility of the contractor to:
 - check and verify all dimensions on site;
 - report all errors and/or omissions to the landscape architect;
 - comply with all pertinent codes and by-laws;
 - check and verify locations of all underground services with all local utilities prior to any digging.
- Minimum soil volume required for trees:

Tree Type / Size	Single Tree Soil Volume (m3)	Multiple Tree Soil Volume (m3/tree)
Ornamental	15	9
Columnar	15	9
Small	20	12
Medium	25	15
Large	30	18
Conifer	25	15

No.	Revision	Date
11	RE-ISSUED FOR SPA	30 AUG 2024
10	RE-ISSUED FOR SPA	18 APR 2024
9	RE-ISSUED FOR SPA	21 AUG 2023
8	RE-ISSUED FOR SPA	22 FEB 2023
7	RE-ISSUED FOR SPA	15 SEP 2022
6	RE-ISSUED FOR SPA	1 MAR 2022
5	RE-ISSUED FOR SPA	17 DEC 2021
4	ISSUED FOR SPC	21 APR 2021
3	ISSUED FOR SPC	09 APR 2021
2	ISSUED FOR SPA/ COORD.	17 OCT 2020
1	ISSUED FOR SPA/ REZONING	08 AUG 2019

North:

Stamp:

CSW Landscape Architecture
Urban Design
Site Planning
Recreation and Park Planning
Project Management

319 McRae Avenue, Suite 502, Ottawa, Ontario, K1Z 0B9
Tel: (613) 729-4536

PBC GROUP

Project:
951 Gladstone Avenue & 145 Loretta Avenue North

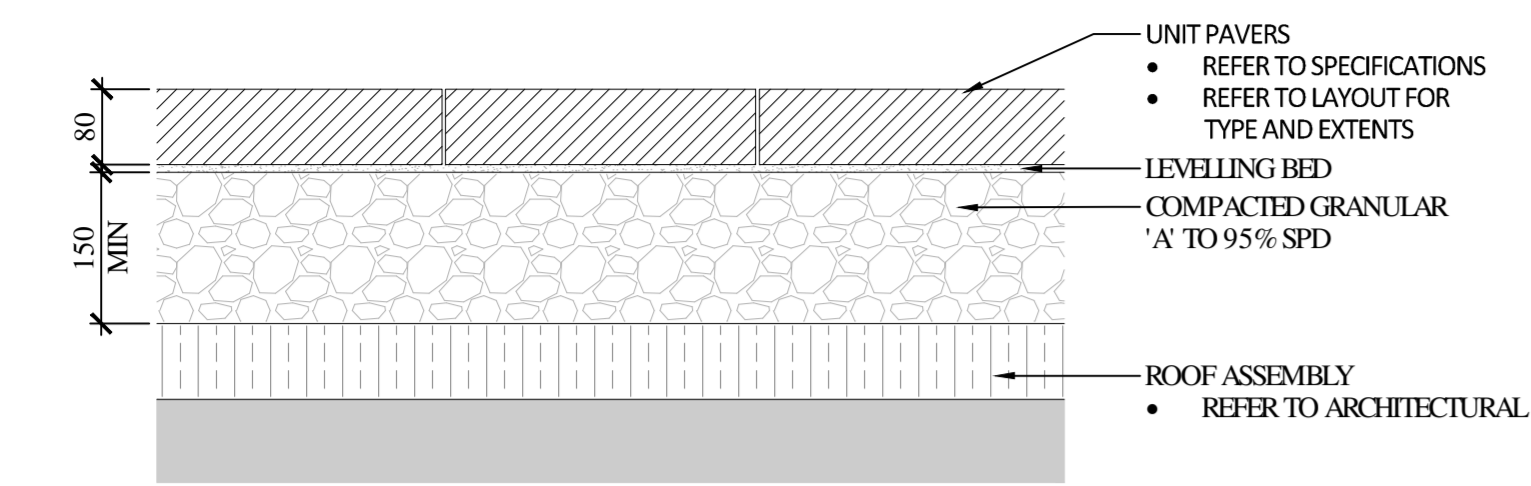
OTTAWA, ONTARIO

Drawing:
LANDSCAPE PLAN Phase II

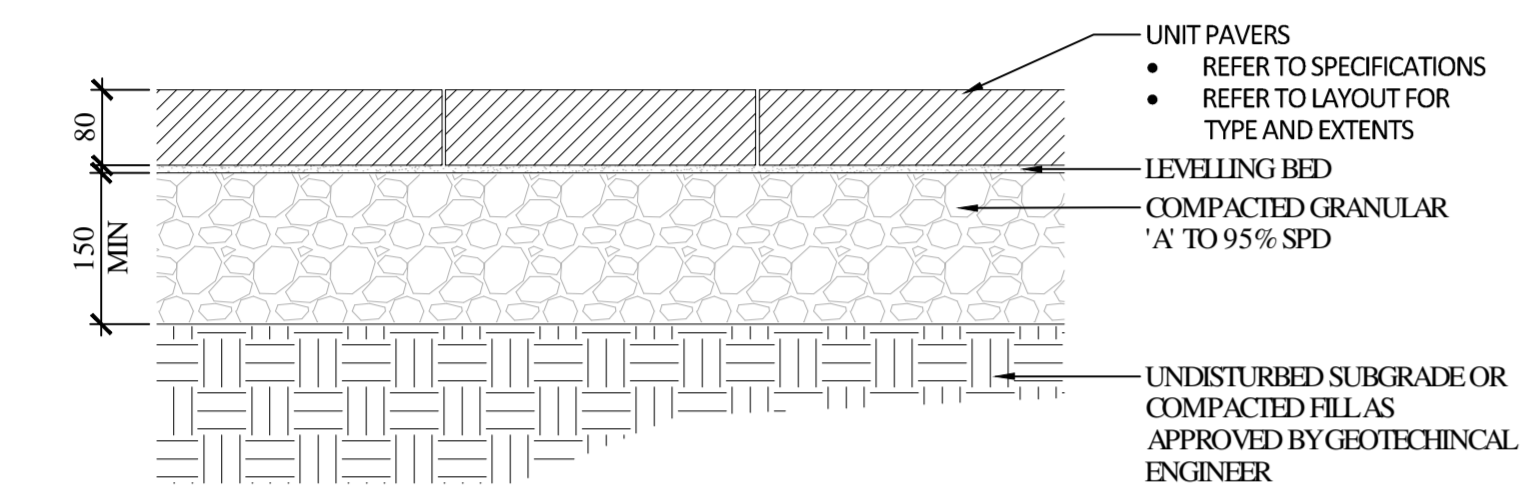
Scale: 1:250	Date: July 2019
Design By: CM	Drawn By: AB
Project Number: 1987-01	Sheet Number: L2.2

Last Save: 8/20/2024 10:27:11 AM
File Location: Z:\Projects\1987-01 Gladstone And Loretta\Drawings\SPA\1987-01 Gladstone & Loretta (Landscape-PH2) R17.dwg

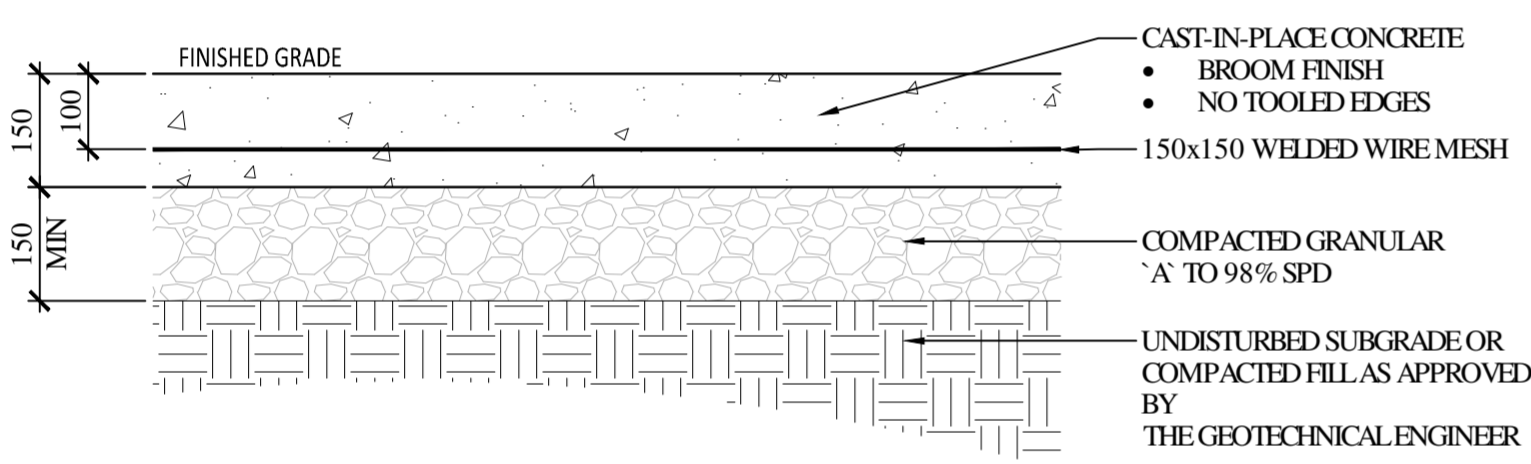
D07-12-21-0053



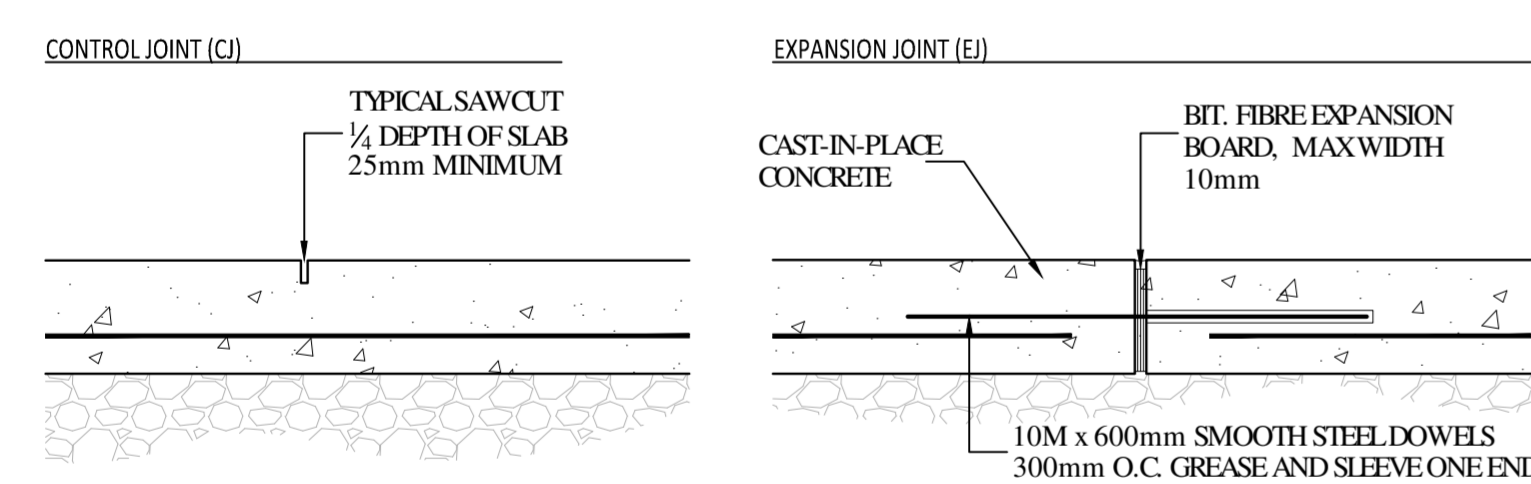
01 UNIT PAVING ON ROOF SLAB
Scale 1:10



02 UNIT PAVING ON GRANULAR BASE
Scale 1:10

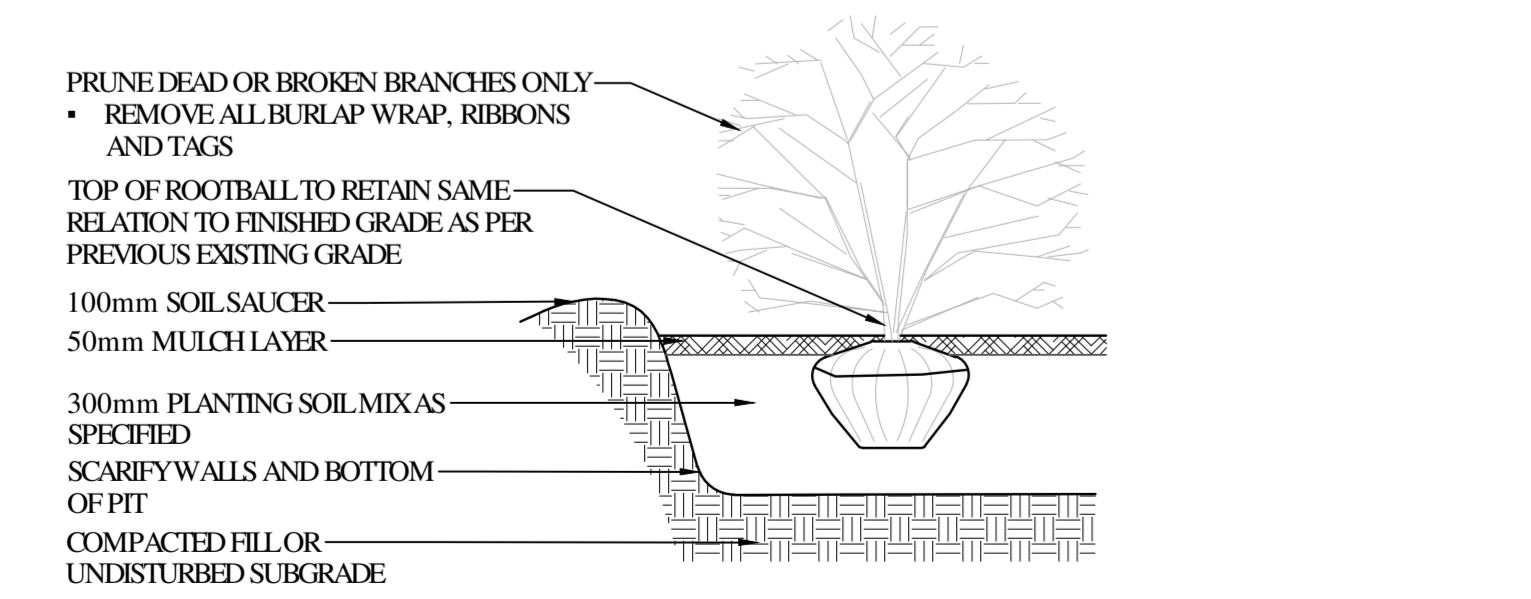


03 CONCRETE PAVING
Scale 1:10

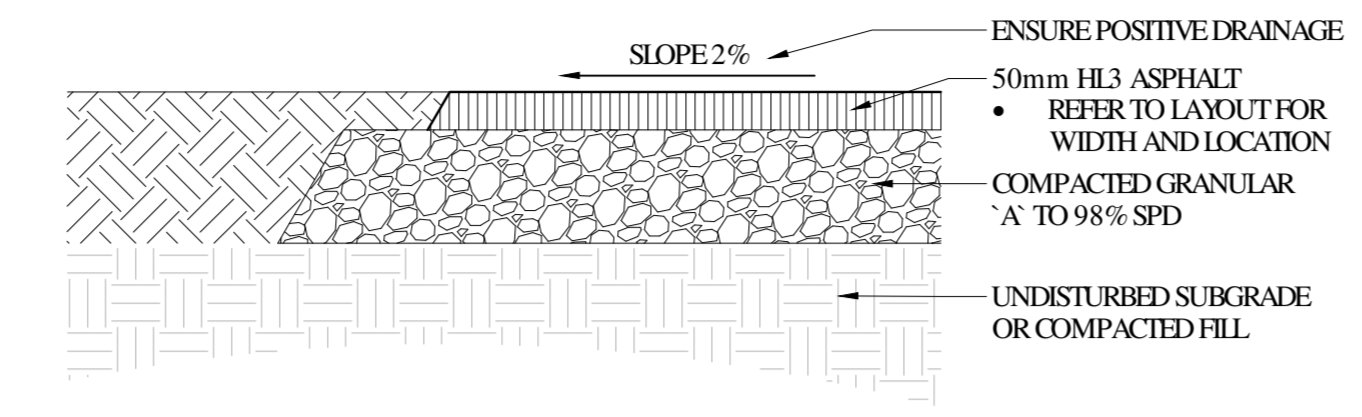


NOTES:
1. REFER TO DRAWINGS FOR JOINT LAYOUT
2. SAWCUT WITHIN 48 HOURS OF POUR
3. NO TOOLED EDGES

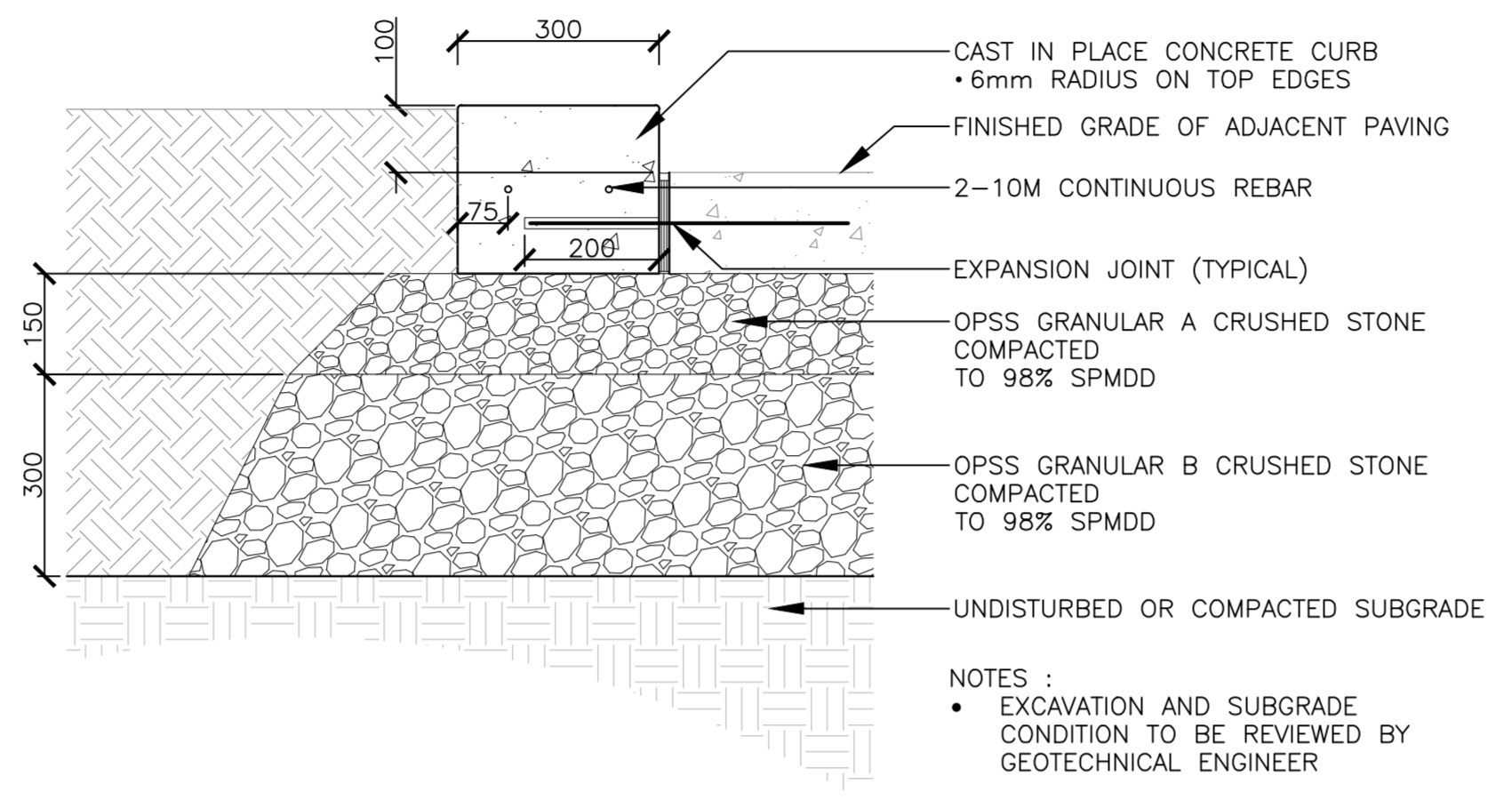
04 CONCRETE JOINTING
Scale 1:10



05 SHRUB/PERENNIAL PLANTING
NOT TO SCALE

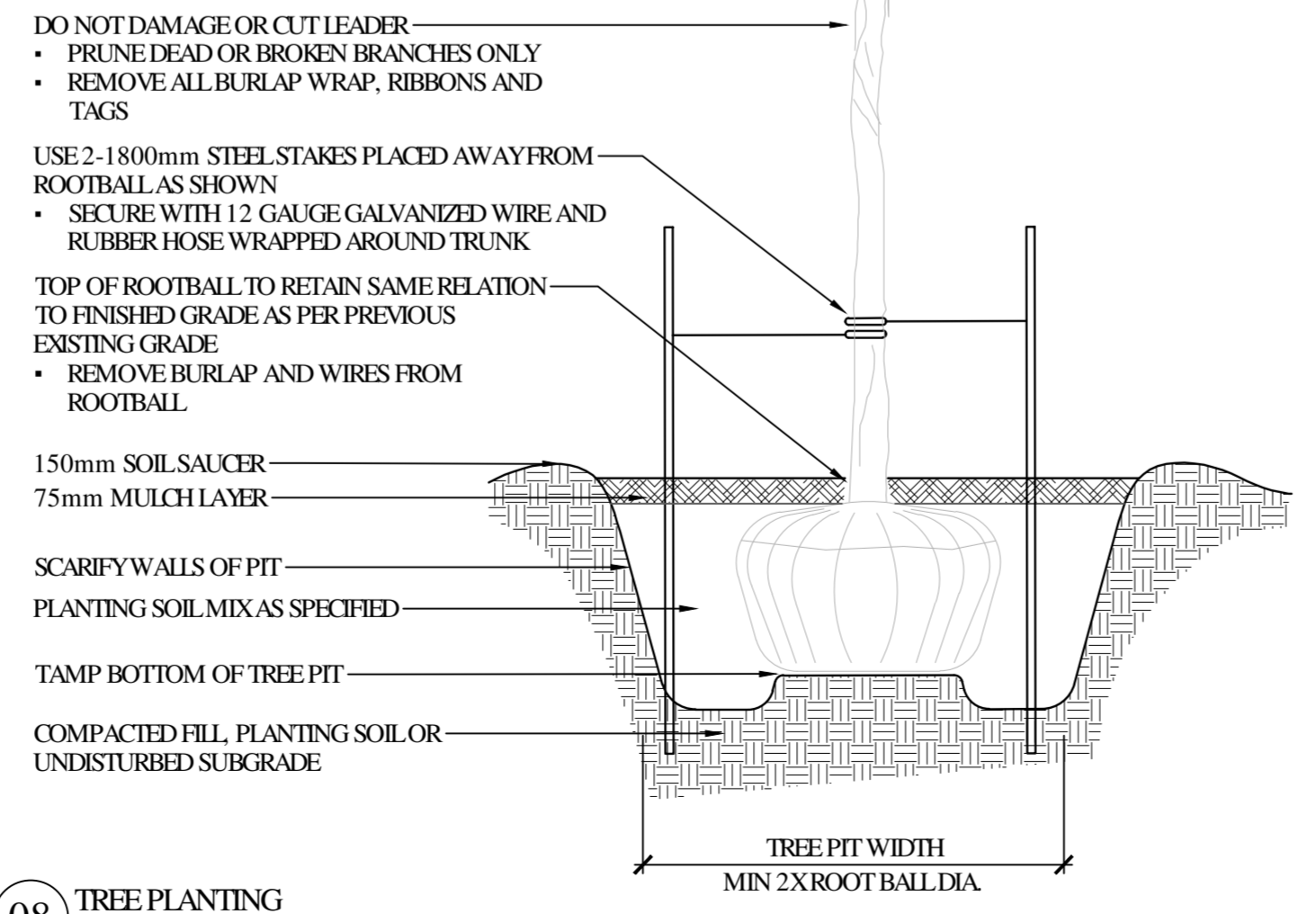


06 ASPHALT PATHWAY
Scale 1:10

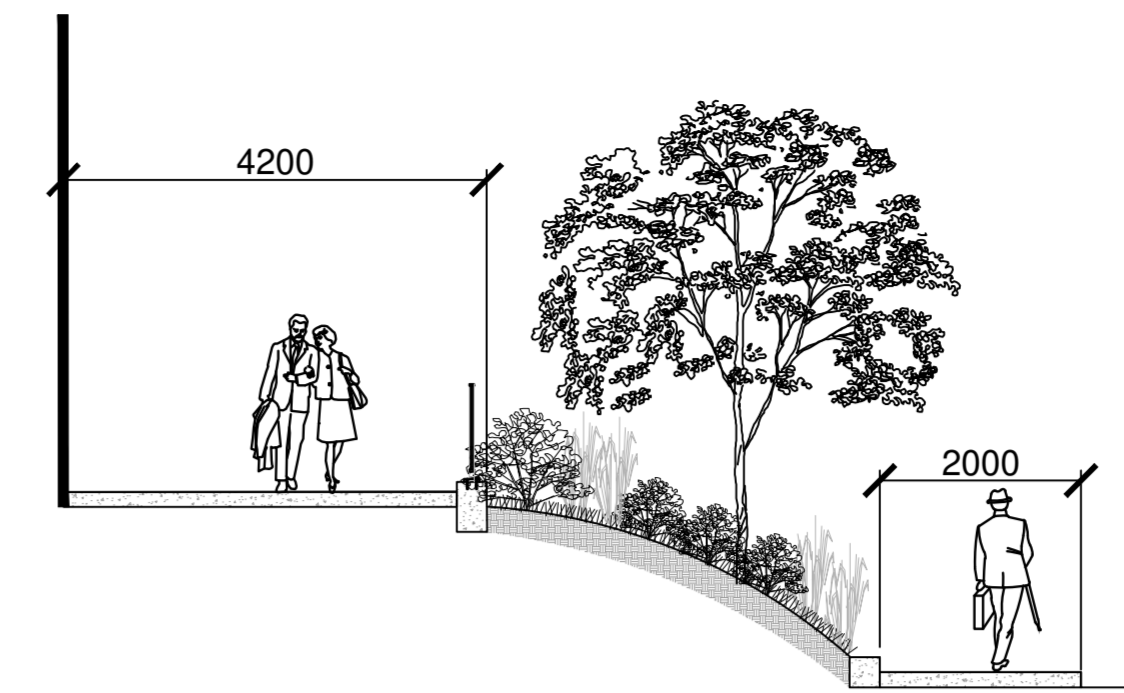


07 LANDSCAPE CONCRETE CURB
Scale 1:10

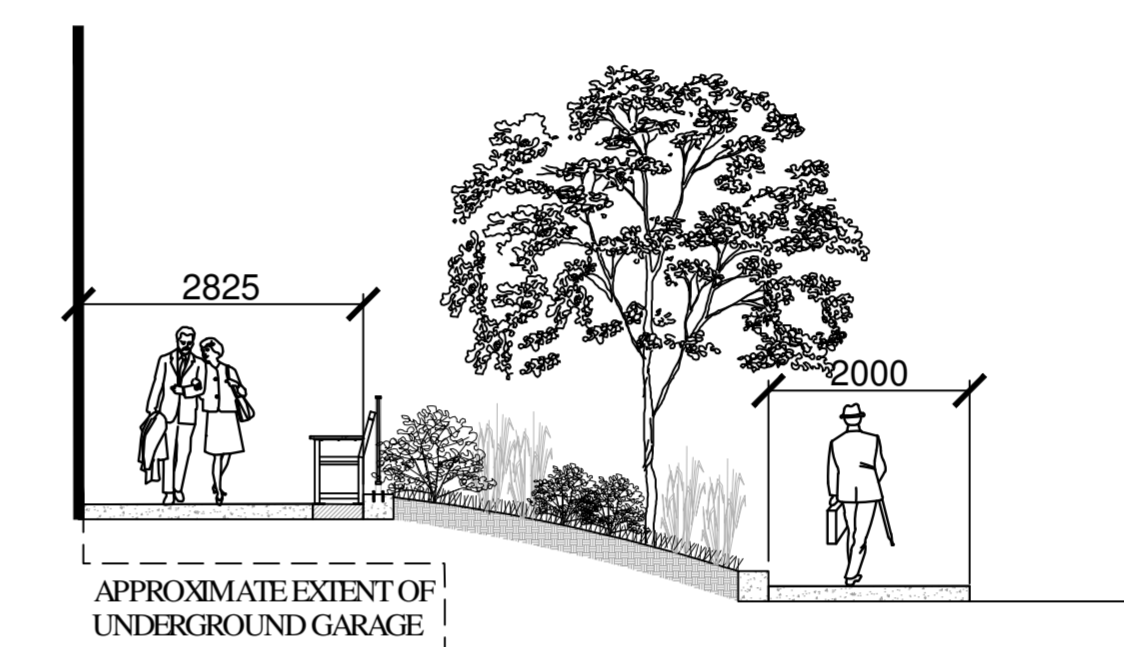
NOTES:
• EXCAVATION AND SUBGRADE CONDITION TO BE REVIEWED BY GEOTECHNICAL ENGINEER



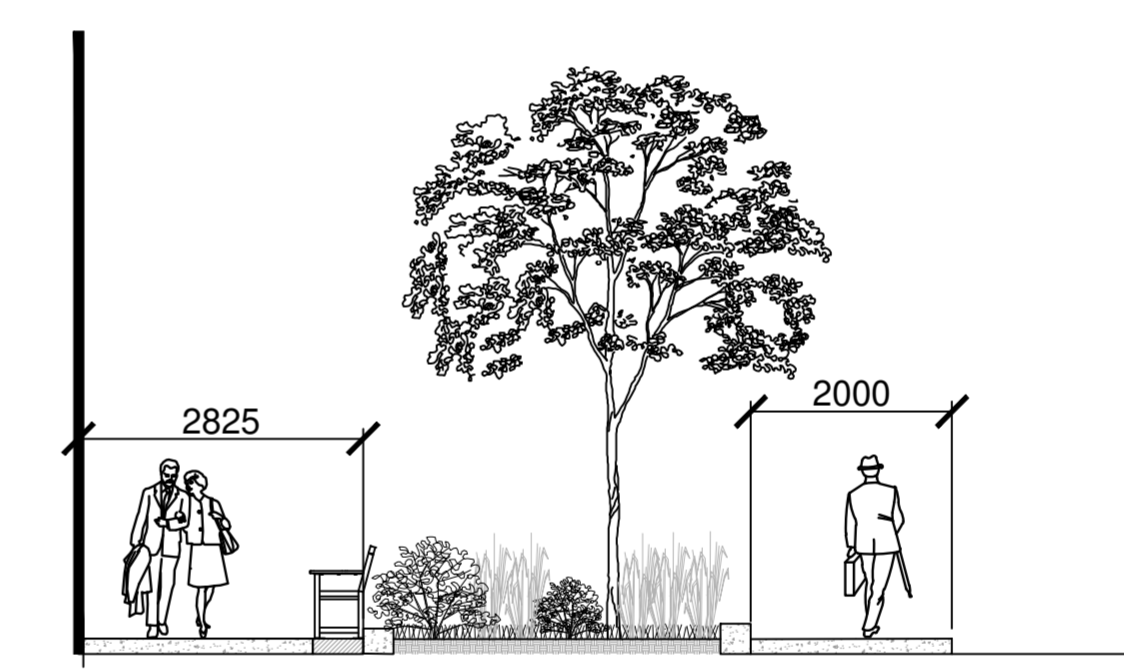
08 TREE PLANTING
NOT TO SCALE



09 GLADSTONE AVE SECTION A
Scale 1:10



10 GLADSTONE AVE SECTION B
Scale 1:10



11 GLADSTONE AVE SECTION C
Scale 1:10

- GENERAL NOTES:
- All measurements in millimeters unless specified otherwise. Do not scale drawing. All drawings to be read in conjunction with written specifications.
 - Copyright reserved. This drawing is the exclusive property of CSW Landscape Architects Ltd. and shall not be used without the consent thereof.
 - This Drawing may not be used for construction until signed by the landscape architect. It is the responsibility of the contractor to:
 - check and verify all dimensions on site;
 - report all errors and/or omissions to the landscape architect;
 - comply with all pertinent codes and by-laws;
 - check and verify locations of all underground services with all local utilities prior to any digging.
 - Minimum soil volume required for trees:

Tree Type / Size	Single Tree Soil Volume (m3)	Multiple Tree Soil Volume (m3/tree)
Ornamental	15	9
Columnar	15	9
Small	20	12
Medium	25	15
Large	30	18
Conifer	25	15

No.	Revision	Date
11	RE-ISSUED FOR SPA	30 AUG 2024
10	RE-ISSUED FOR SPA	18 APR 2024
9	RE-ISSUED FOR SPA	21 AUG 2023
8	RE-ISSUED FOR SPA	22 FEB 2023
7	RE-ISSUED FOR SPA	15 SEP 2022
6	RE-ISSUED FOR SPA	1 MAR 2022
5	RE-ISSUED FOR SPA	17 DEC 2021
4	ISSUED FOR SPC	21 APR 2021
3	ISSUED FOR SPC	09 APR 2021
2	ISSUED FOR SPA/ COORD.	17 OCT 2020
1	ISSUED FOR SPA/ REZONING	08 AUG 2019

North: _____ Stamp: _____

CSW Landscape Architecture
Urban Design
Site Planning
Recreation and Park Planning
Project Management

319 McRae Avenue, Suite 502, Ottawa, Ontario, K1Z 0B9
Tel: (613) 729-4536

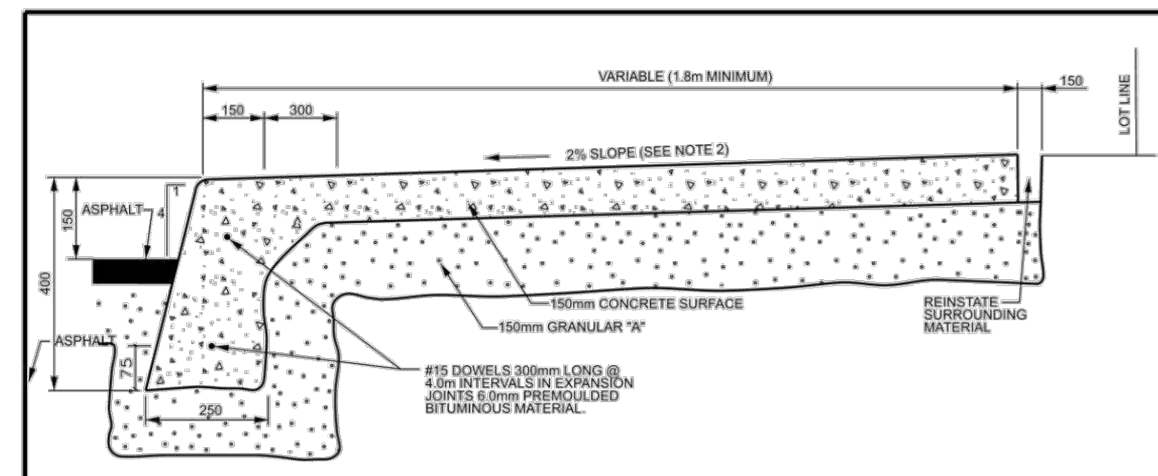
PBC GROUP CLV GROUP

Project:
951 Gladstone Avenue & 145 Loretta Avenue North
OTTAWA, ONTARIO

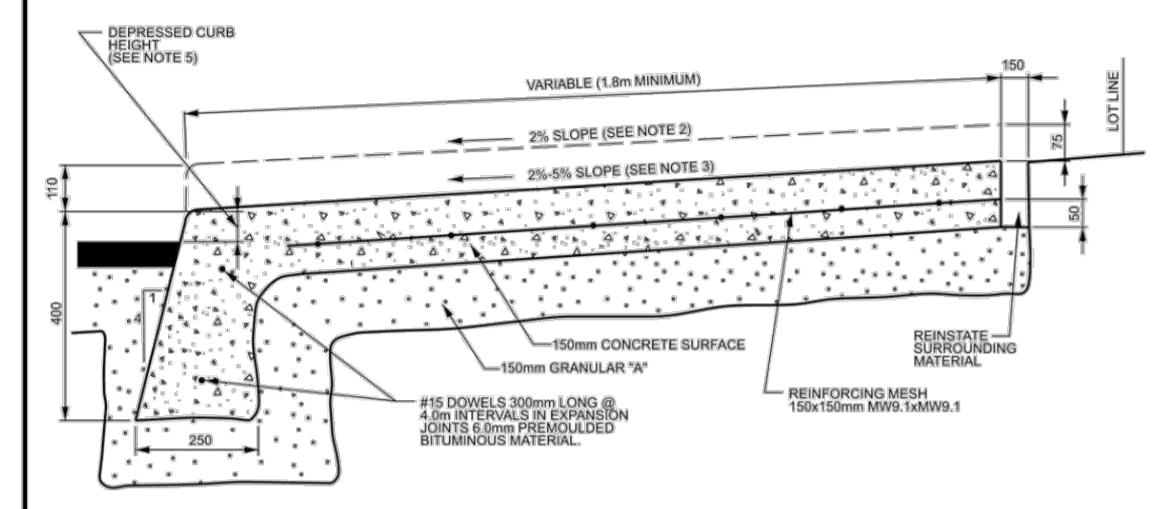
Drawing:
DETAILS

Scale:	Date:
Design By:	Drawn By:
Project Number:	Sheet Number:

18526



TYPICAL SIDEWALK SECTION



SECTION AT PRIVATE ENTRANCE AND PEDESTRIAN RAMPS

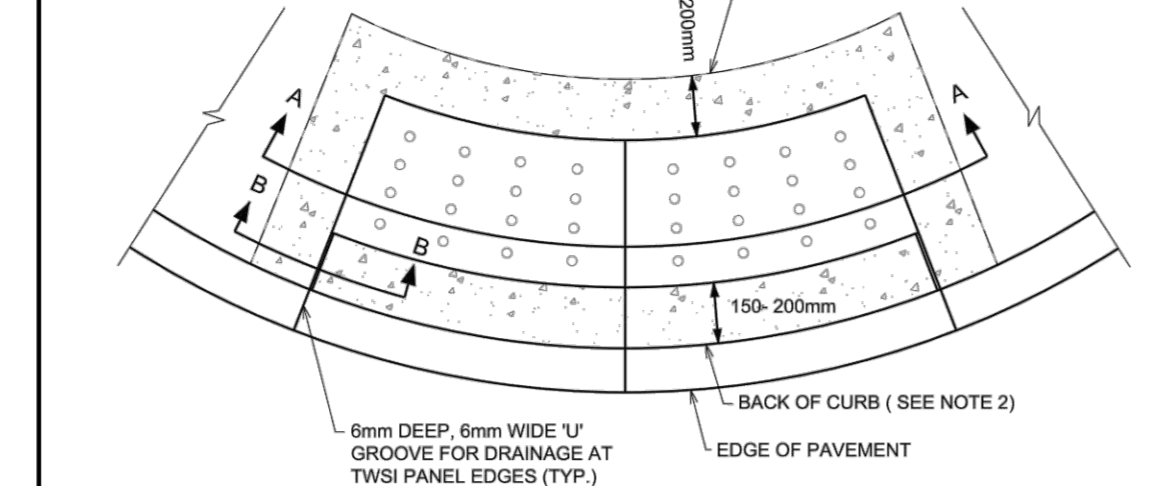
NOTES:
 1. ALL DIMENSIONS ARE IN MILLIMETRES UNLESS SHOWN OTHERWISE.
 2. THE MAXIMUM SLOPE IS NOT TO EXCEED 2%.
 3. FOR CURB RAMPS, SLOPE OF 2% TO 5%, MAXIMUM 8%.
 4. EXPANSION AND DUMMY JOINTS AS PER SCS.
 5. DEPRESSED CURB HEIGHT - FOR PEDESTRIAN CURB RAMPS 6 TO 6mm AND FOR PRIVATE ENTRANCES 6 TO 12mm.

N.T.S.

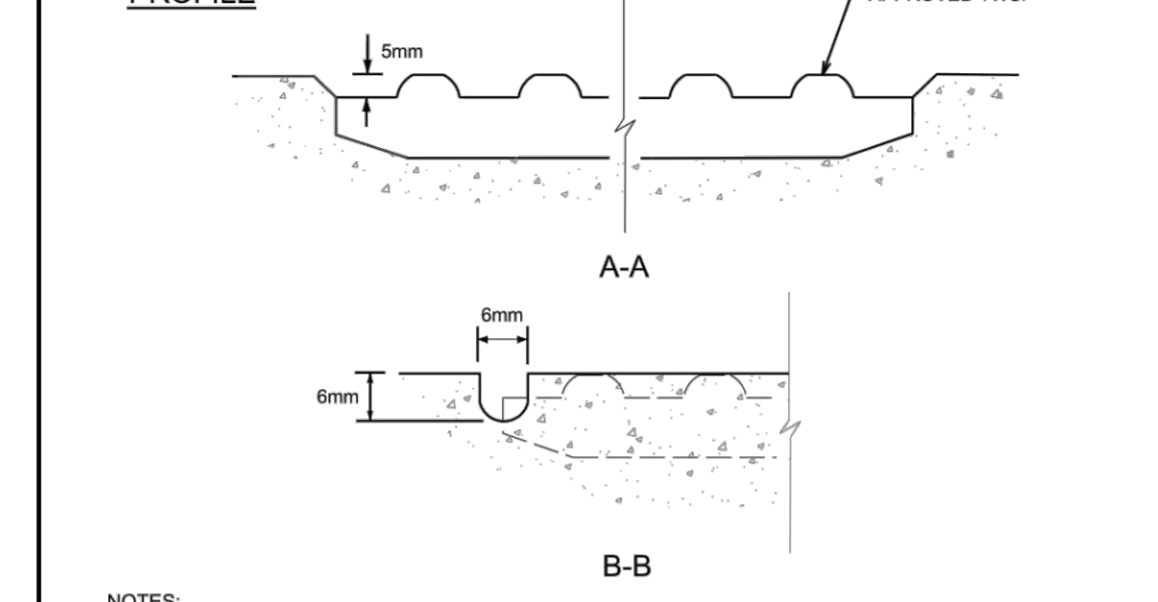
Ottawa	MONOLITHIC CONCRETE CURB AND SIDEWALK	DATE:	MAY 2001
		REV. DATE:	MARCH 2021
		DWG. No.:	SC2



PLAN



PROFILE



A-A

B-B

NOTES:
 1. TOPS OF TWSI'S (TACTILE WALKING SURFACE INDICATOR) SHALL BE ALIGNED & LEVEL WITH THE ADJACENT CONCRETE SURFACE & INSTALLATION IN WET CONCRETE SHALL BE EFFECTIVE IN PERMANENTLY SECURING THE TWSI IN PLACE ONCE DRY.
 2. FOR MONOLITHIC SIDEWALKS, TWSI SHALL BE 300 TO 350mm BACK FROM THE CURB FACE.

N.T.S.

Ottawa	TWSI DETAIL	DATE:	MARCH 2016
		REV. DATE:	MARCH 2016
		DWG. No.:	SC7.3

- GENERAL NOTES:
- All measurements in millimeters unless specified otherwise. Do not scale drawing. All drawings to be read in conjunction with written specifications.
 - Copyright reserved. This drawing is the exclusive property of CSW Landscape Architects Ltd. and shall not be used without the consent thereof.
 - This Drawing may not be used for construction until signed by the landscape architect. It is the responsibility of the contractor to:
 - check and verify all dimensions on site;
 - report all errors and/or omissions to the landscape architect;
 - comply with all pertinent codes and by-laws;
 - check and verify locations of all underground services with all local utilities prior to any digging.
 - Minimum soil volume required for trees:

Tree Type / Size	Single Tree Soil Volume (m3)	Multiple Tree Soil Volume (m3/tree)
Ornamental	15	9
Columnar	15	9
Small	20	12
Medium	25	15
Large	30	18
Conifer	25	15

No.	Revision	Date
11	RE-ISSUED FOR SPA	30 AUG 2024
10	RE-ISSUED FOR SPA	18 APR 2024
9	RE-ISSUED FOR SPA	21 AUG 2023
8	RE-ISSUED FOR SPA	22 FEB 2023
7	RE-ISSUED FOR SPA	15 SEP 2022
6	RE-ISSUED FOR SPA	1 MAR 2022
5	RE-ISSUED FOR SPA	17 DEC 2021
4	ISSUED FOR SPC	21 APR 2021
3	ISSUED FOR SPC	09 APR 2021
2	ISSUED FOR SPA/ COORD.	17 OCT 2020
1	ISSUED FOR SPA/ REZONING	08 AUG 2019

North:

Stamp:

CSW Landscape Architecture
 Urban Design
 Site Planning
 Recreation and Park Planning
 Project Management

319 McRae Avenue, Suite 502, Ottawa, Ontario, K1Z 0B9
 Tel: (613) 729-4536

Project:
951 Gladstone Avenue & 145 Loretta Avenue North
 OTTAWA, ONTARIO

Drawing:
DETAILS

Scale:	Date:
Design By:	Drawn By:
Project Number:	Sheet Number:

July 2019
 CM AB
 1987-01 L3.1

Last Save: 8/20/2024 10:27:11 AM
 File Location: Z:\Projects\1987-01 Gladstone And Loretta\Drawing\SPA\1987-01 Gladstone & Loretta (Landscape-PH2) R17.dwg

D07-12-21-0053