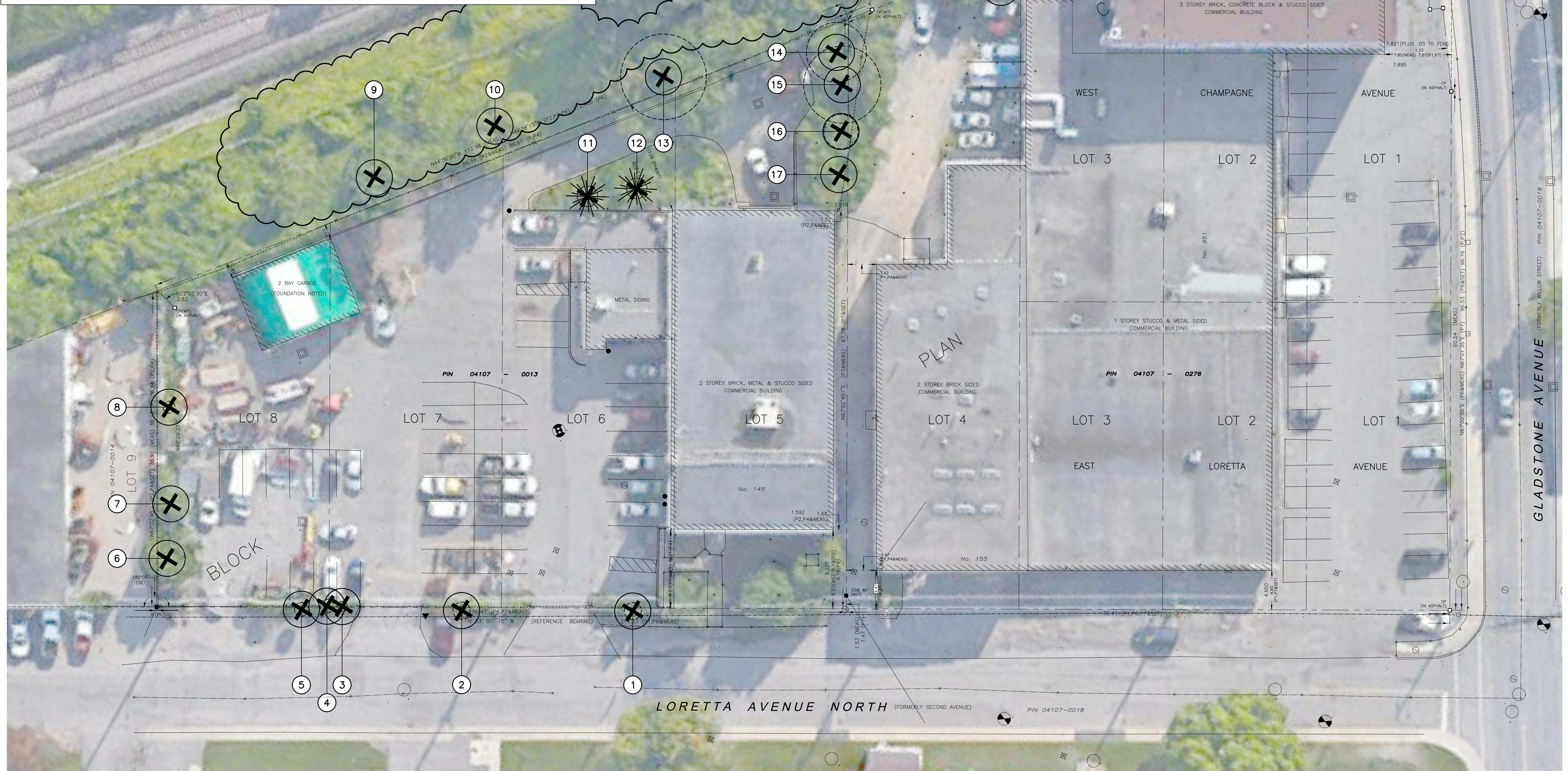


Tree #	Botanical Name	Common Name	Caliper (cm)	Condition	High Quality Tree	Rare Tree	Comments	To Be Preserved
1	<i>Syringa reticulata</i>	Japanese Tree Lilac	10	Good	NO	NO	City Owned, Symmetrical Canopy	NO
2	<i>Syringa reticulata</i>	Japanese Tree Lilac	10	Good	NO	NO	City Owned, Symmetrical Canopy	NO
3	<i>Syringa reticulata</i>	Japanese Tree Lilac	6	Poor	NO	NO	City Owned, Asymmetrical Canopy, Die-back 40% @ canopy, Leaning, Broken trunk @ base	NO
4	<i>Syringa reticulata</i>	Japanese Tree Lilac	8	Moderate	NO	NO	City Owned, Symmetrical Canopy, Die-back 20% @ canopy, Broken limbs	NO
5	<i>Syringa reticulata</i>	Japanese Tree Lilac	8	Moderate	NO	NO	City Owned, Asymmetrical Canopy, Die-back 10% @ canopy, Broken limbs	NO
6				Dead				
7				Dead				
8	<i>Acer negundo</i>	Manitoba Maple	7	Moderate	NO	NO	Private Owned, Symmetrical Canopy, Pruned lower stems, Co-dominant leaders 2 @ 2.0m	NO
9				Dead				
10				Dead				
11	<i>Tsuga canadensis</i>	Eastern Hemlock	12	Good	NO	NO	Private Owned, Symmetrical Canopy	NO
12	<i>Tsuga canadensis</i>	Eastern Hemlock	12	Good	NO	NO	Private Owned, Symmetrical Canopy	NO
13	<i>Acer negundo</i>	Manitoba Maple	50, 40, 30	Moderate	NO	NO	Private Owned, Symmetrical Canopy, Die-back 5% @ canopy, 3 stem, Significant invasive vines	NO
14	<i>Acer negundo</i>	Manitoba Maple	35	Poor	NO	NO	Private Owned, Asymmetrical Canopy, Die-back 75% @ canopy, Broken limbs, Poor branch angle, Significant invasive vines	NO
15	<i>Acer negundo</i>	Manitoba Maple	45	Poor	NO	NO	Private Owned, Asymmetrical Canopy, Die-back 75% @ canopy, Poor branch angle, Leaning, Significant invasive vines	NO
16	<i>Acer negundo</i>	Manitoba Maple	15, 20	Moderate	NO	NO	Private Owned, Asymmetrical Canopy, 4 stem	NO
17				Dead				
18	<i>Acer negundo</i>	Manitoba Maple	15, 20	Poor	NO	NO	Private Owned, Symmetrical Canopy, Die-back 20% @ canopy, Broken limbs, 5 stem, Leaning	NO
19	<i>Ulmus parvifolia</i>	Chinese Elm	9	Good	NO	NO	Private Owned, Symmetrical Canopy, Co-dominant 2 @ 0.5m	NO
20	<i>Populus deltoides</i>	Cottonwood	~45	Moderate	NO	NO	City Owned, Symmetrical Canopy	NO
21	<i>Acer negundo</i>	Manitoba Maple	varies	Poor	NO	NO	City Owned, Asymmetrical Canopy, Significant invasive vines	NO



LEGEND:

- CRITICAL ROOT ZONE (CRZ)
- EXISTING DECIDUOUS TREE
- EXISTING CONIFEROUS TREE
- TREE TO BE REMOVED

No.	Revision	Date
2	ISSUED FOR SPC	09 APR 2021
1	ISSUED FOR REVIEW	12 OCT 2018

North:

Stamp:

**CSW** Landscape Architecture  
 Urban Design  
 Site Planning  
 Recreation and Park Planning  
 Project Management

319 McRae Avenue, Suite 502, Ottawa, Ontario, K1Z 0B9  
 Tel: (613) 729-4536

- All measurements in millimeters unless specified otherwise. Do not scale drawing. All drawings to be read in conjunction with written specifications.
- Copyright reserved. This drawing is the exclusive property of CSW Landscape Architects Ltd. and shall not be used without the consent thereof.
- This Drawing may not be used for construction until signed by the landscape architect. It is the responsibility of the contractor to:
  - check and verify all dimensions on site;
  - report all errors and/or omissions to the landscape architect;
  - comply with all pertinent codes and by-laws;
  - check and verify locations of all underground services with all local utilities prior to any digging.

Project:  
**Gladstone and Loretta**  
 OTTAWA, ONTARIO

Drawing:  
**TREE CONSERVATION REPORT**

Scale:	1:250	Date:	04 OCT 2018
Design By:	QL	Drawn By:	QL
Project Number:	1987-01	Sheet Number:	TCR 1.0

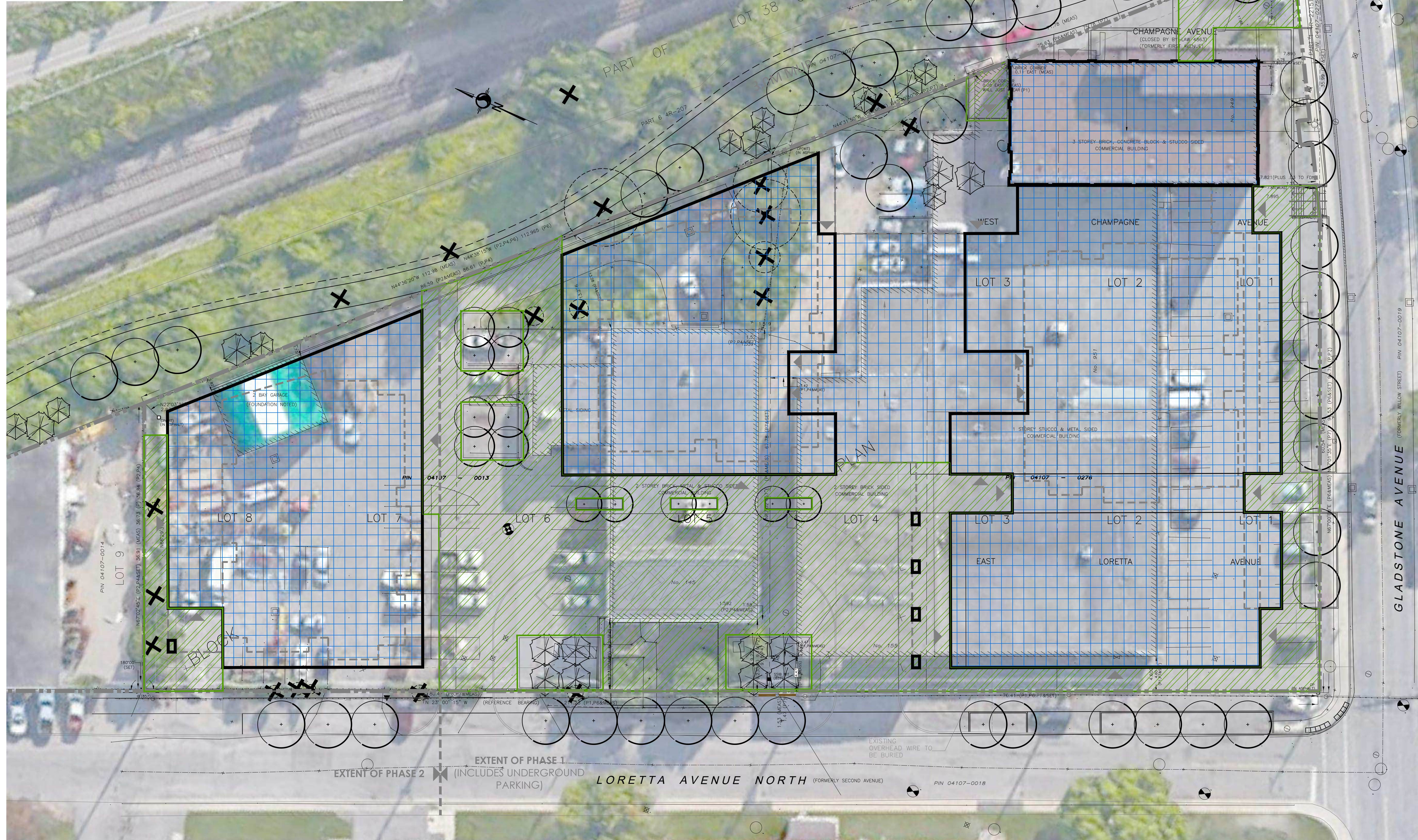


**SITE DESCRIPTION:**

THIS IS AN EXISTING COMMERCIAL SITE USED PRIMARILY AS BUSINESS SPACE FOR MULTIPLE TENANTS. MUCH OF THE SITE IS CURRENTLY OCCUPIED BY ASPHALT PARKING LOT. THE MAJORITY OF TREES ON SITE ARE AT THE PERIMETER EDGES. WITH THE EXCEPTION OF THE STREET TREES ALONG LORETTA AVE, MOST TREES HAVE ESTABLISHED POORLY AND ARE ILL SITUATED ALONG FENCE LINES OR DIRECTLY AT RETAINING WALLS.

THE LINEAR LANDSCAPE AREA NORTHEAST OF THE SITE RUNS ADJACENT TO THE EXISTING O-TRAIN TRACKS. THIS AREA IS SEPARATED FROM THE COMMERCIAL PROPERTIES WITH CHAIN LINK FENCE AT THE TOP OF A SLOPE. THE AREA IS DENSE WITH INVASIVE PLANTS SUCH AS MANITOBA MAPLE, WILD GRAPE VINE AND VIRGINIA CREEPER. THE AREA HAS A GREAT DEAL OF DEAD TREES AND MISCELLANEOUS DEBRIS MAKING THE AREA DIFFICULT TO ACCESS.

THE SITE LACKS SIGNIFICANT TREES OF VALUE. THE PRESENT TREES OFFER LITTLE BENEFIT TO THE SITE IN TERMS OF ECOLOGY, CHARACTER, OR SHADE VALUE. THE GENERAL CONDITION OF THE SITE'S TREES ARE POOR WITH A DECLINING STATE OF HEALTH.



LEGEND:

	BUILDING/STRUCTURE
	HARD/IMPERMEABLE SURFACE
	PROPOSED TREES
	CRITICAL ROOT ZONE (CRZ)
	TREE TO BE REMOVED

No.	Revision	Date
2	ISSUED FOR SPC	09 APR 2021
1	ISSUED FOR REVIEW	12 OCT 2018

North:

Stamp:

**CSW** Landscape Architecture  
 Urban Design  
 Site Planning  
 Recreation and Park Planning  
 Project Management

319 McRae Avenue, Suite 502, Ottawa, Ontario, K1Z 0B9  
 Tel: (613) 729-4536

- All measurements in millimeters unless specified otherwise. Do not scale drawing. All drawings to be read in conjunction with written specifications.
- Copyright reserved. This drawing is the exclusive property of CSW Landscape Architects Ltd. and shall not be used without the consent thereof.
- This Drawing may not be used for construction until signed by the landscape architect. It is the responsibility of the contractor to:
  - check and verify all dimensions on site;
  - report all errors and/or omissions to the landscape architect;
  - comply with all pertinent codes and by-laws;
  - check and verify locations of all underground services with all local utilities prior to any digging.

Project:  
**Gladstone and Loretta**

OTTAWA, ONTARIO

Drawing:  
**TREE CONSERVATION REPORT**

Scale: 1:250	Date: 04 OCT 2018
Design By: QL	Drawn By: QL
Project Number: 1987-01	Sheet Number: TCR 1.1