



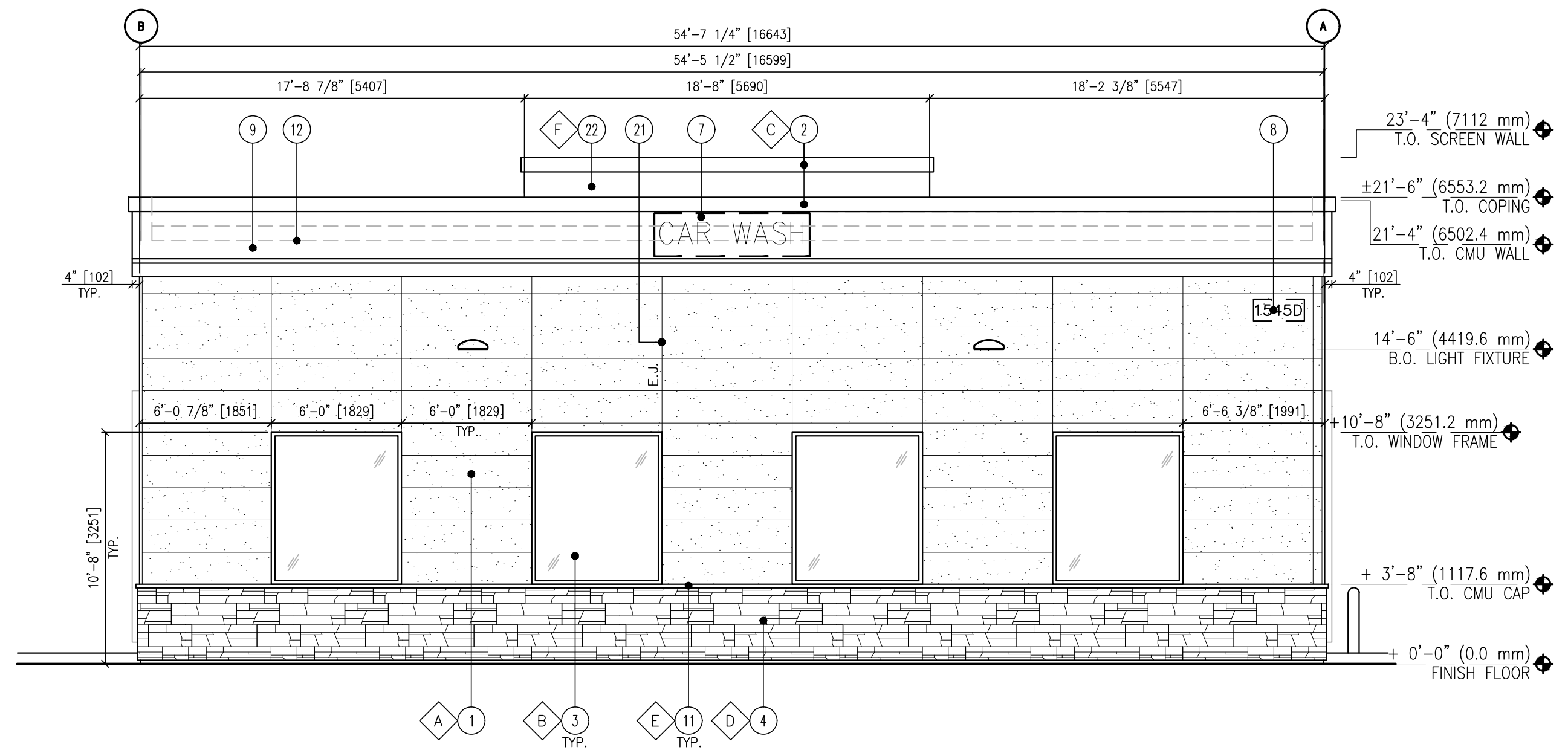
**KEY NOTES**

- NICHHA WALL PANEL FIBER CEMENT.
- PRE-FINISHED METAL COPING.
- WINDOWS: PAINT WINDOW FRAMES DARK BRONZE. GLASS TO BE 1" GRAY TINTED GLASS.
- 1 3/8" THK. X 6" HIGH NICHHA KURASTONE FIBER CEMENT WANSOCT.
- INSULATED HOLLOW METAL DOOR (U=0.70).
- POLYCARBONATE OVERHEAD DOOR BY BAYWATCH.
- LOGO/ CAR WASH SIGN (SHOWN DASHED) PROVED AND INSTALLED BY SIGNAGE VENDOR - SIGNAGE UNDER SEPARATE PERMIT.
- ADDRESS SIGN NUMBERS, 8" HIGH & 1" CONTRASTING BACKGROUND.
- ACM BAND PANEL PROVIDED & INSTALLED BY SIGNAGE VENDOR.
- EXTERIOR WALL-MOUNTED LIGHTING ABOVE EXTERIOR DOOR.
- 1-1/2" HIGH FIBER CEMENT CAP INSTALL PER MFR. SPECS. FINISH - NICHHA LEDGESTONE BLUFF.
- LINE OF ROOF.
- ROOF DRAIN, SEE CIVIL DRAWINGS FOR CONTINUATION & DETAIL D1/A3.0-CW.
- OVERFLOW WITH SHEEP TONGUE, CONTRACTOR TO PROVIDE A CONCRETE SPLASH BLOCK AT THIS DOWNSPOUT LOCATION AT LANDSCAPE AREA. SEE DETAIL D1/A3.0-CW.
- PRE-FINISHED ACM PORTAL HEADER. PROVIDE POWER FOR LED LIGHTS AND BACK LIT LETTERS. COORDINATE WITH VENDOR.
- 42"x 6" DIA. BOLLARD, PAINT TRAFFIC YELLOW
- ISLAND/ SIDEWALK WITH BROOM FINISH, SLOPED 1/4" PER FT. AWAY FROM BUILDING. REFER TO CIVIL DRAWINGS.
- PRE-FINISHED ACM ENTRANCE PORTAL LEG W/ TIMER. PROVIDE POWER FOR TIMER. COORDINATE WITH VENDOR.
- PRE-FINISHED ACM EXIT PORTAL LEG.
- PRE-FINISHED ACM PORTAL LEG.
- CONTROL/EXPANSION JOINT "E.I." LOCATION, SEE DETAIL D5/A3.2-CW.
- ROOFTOP EQUIPMENT SCREEN WALLS. PAINT TO MATCH #SW 6095 TOASTY.

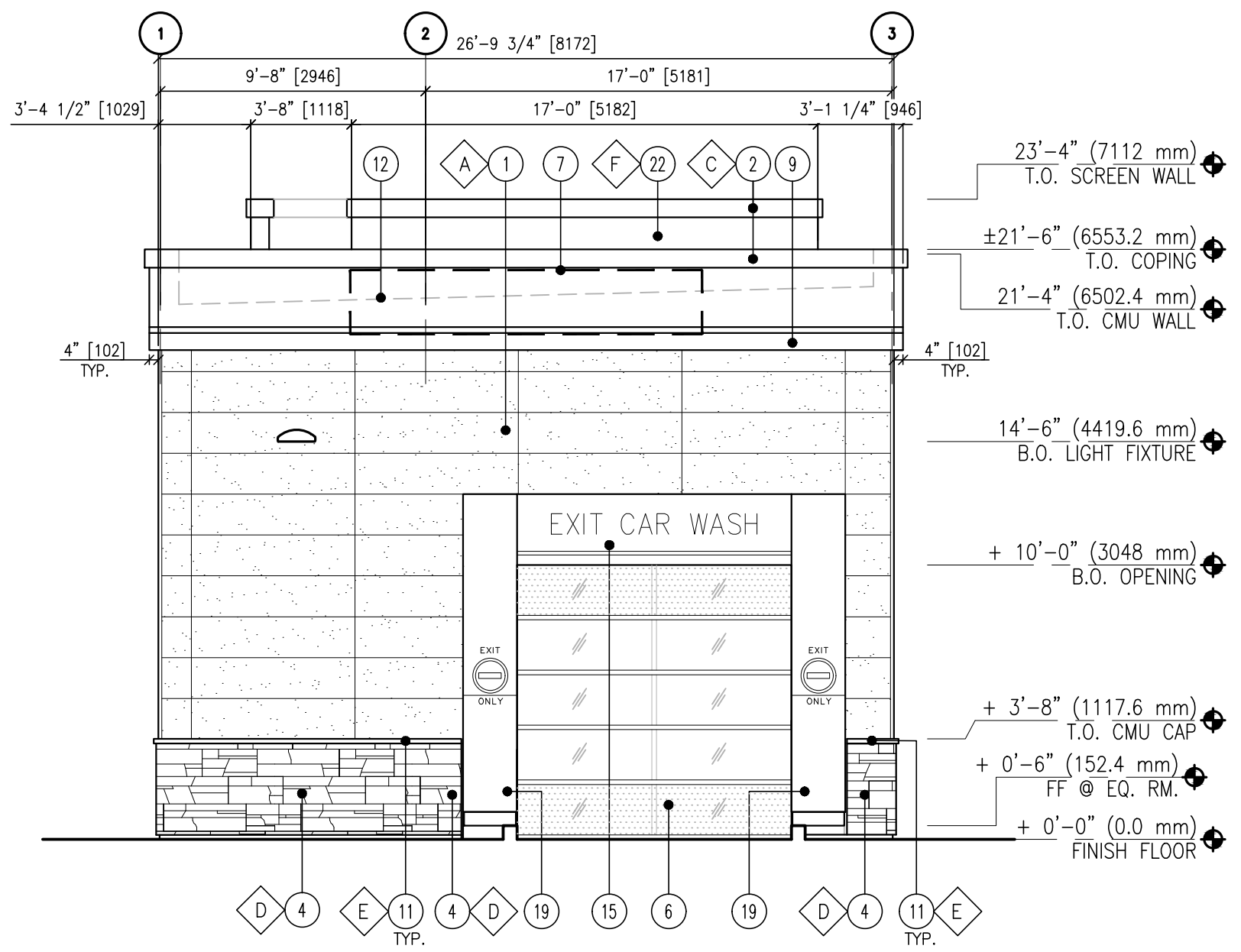
**FINISH SCHEDULE**

- A \*\*\*NICHHA TUFF BLOCK  
- \*SHERWIN WILLIAMS #SW 6095  
- TOASTY
- B \*\*\*NICHHA TUFF BLOCK  
- \*SHERWIN WILLIAMS #SW 6115  
- TOTALLY TAN
- C \*SHERWIN WILLIAMS #SW 6090  
- JAVA
- D \*\*\*NICHHA LEDGESTONE BLUFF
- E \*\*\*NICHHA CHESELED SILL TAN
- F - METAL PANEL  
- COLOUR TO MATCH SW# 6095 TOASTY

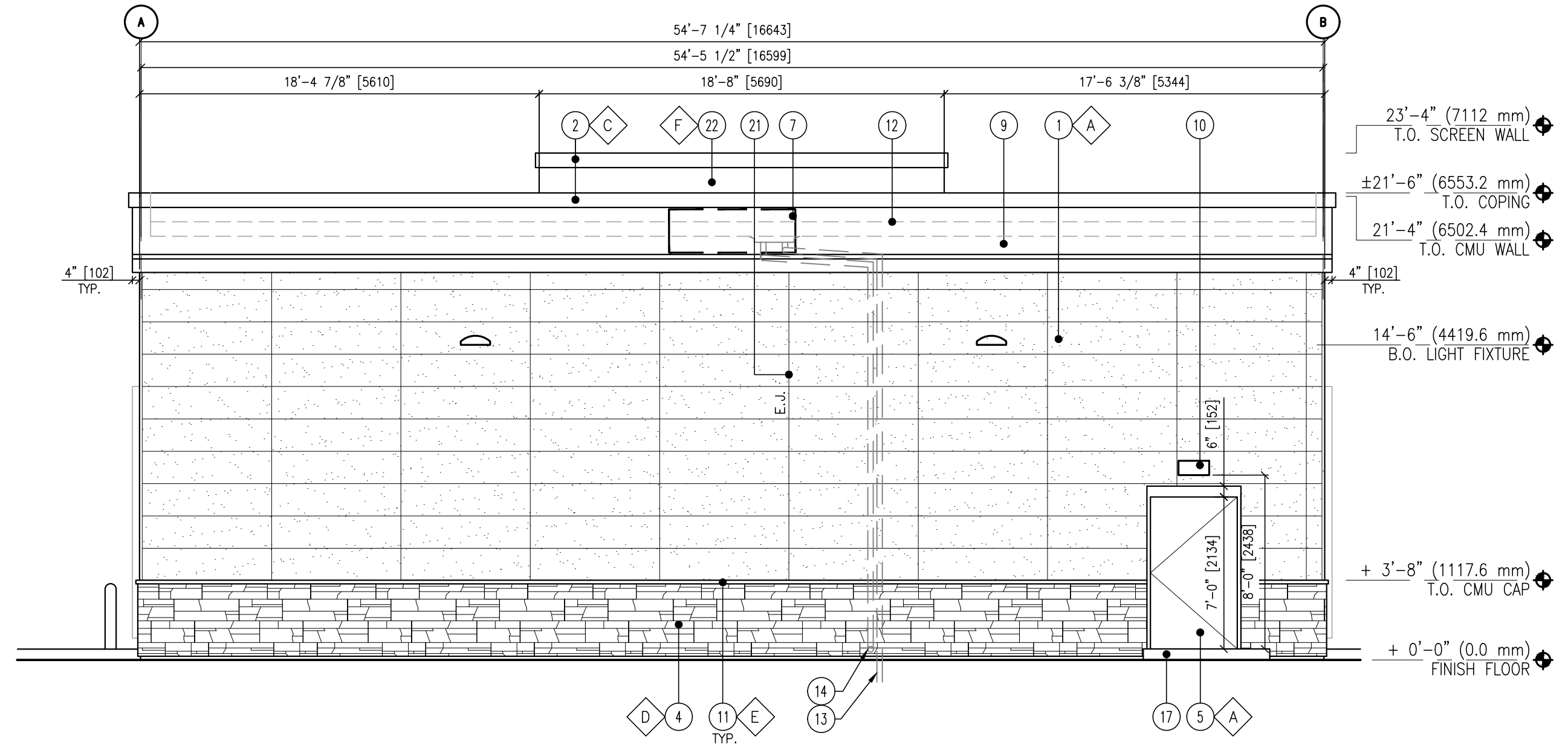
\*USE SHERWIN WILLIAMS MANUFACTURER ONLY.  
\*\*\* CONFIRM WITH OWNER'S REPRESENTATIVE



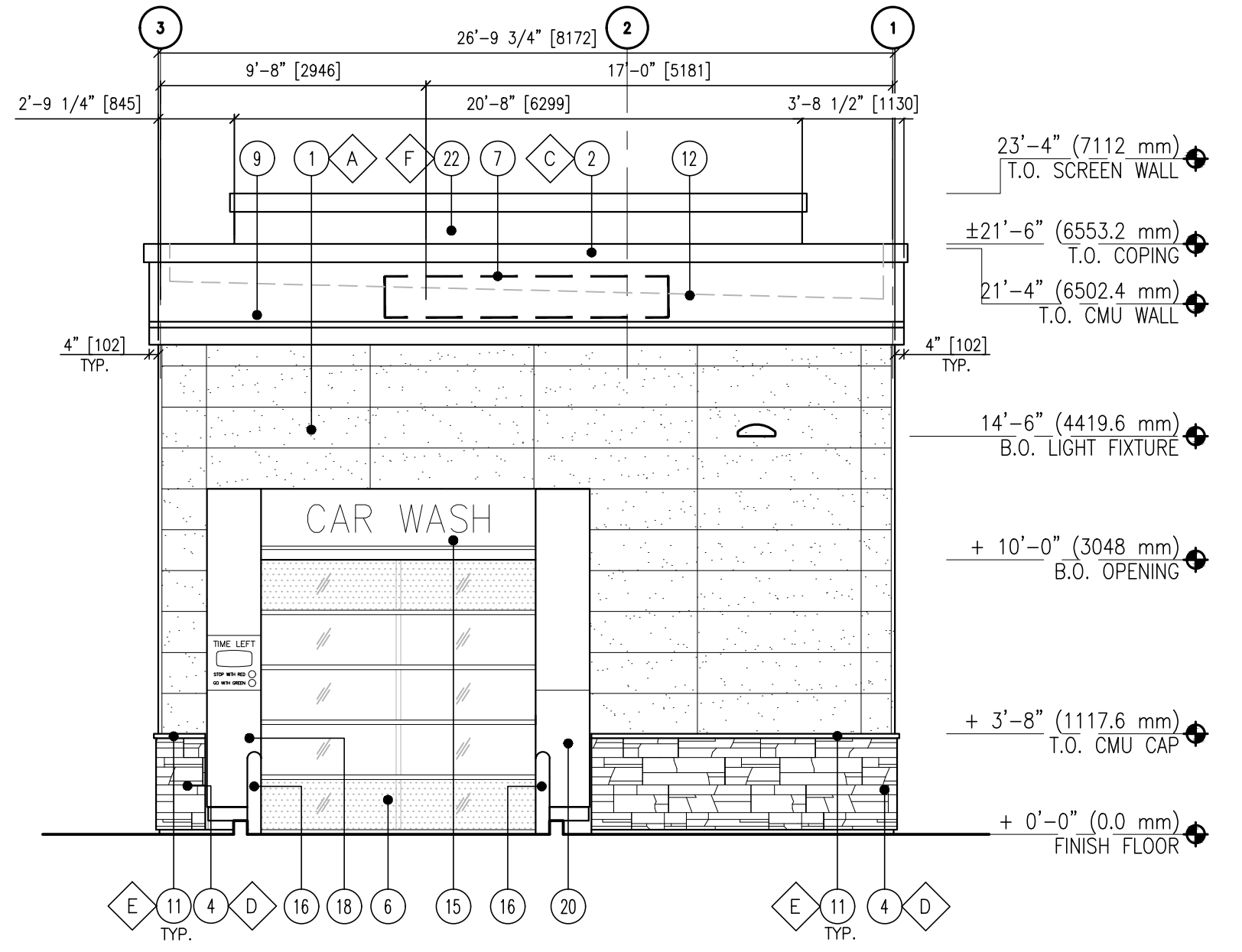
**1**  
"SIDE" (SOUTH)  
**ELEVATION**  
SCALE: 3/16" = 1'-0"



**2**  
"EXIT" (WEST)  
**ELEVATION**  
SCALE: 3/16" = 1'-0"



**3**  
"SIDE" (NORTH)  
**ELEVATION**  
SCALE: 3/16" = 1'-0"



**4**  
"ENTRANCE" (EAST)  
**ELEVATION**  
SCALE: 3/16" = 1'-0"