

Unless otherwise agreed in a written contract between Wood and its client, this document (D) contains information, data and design that is confidential and may not be copied or disclosed and (I) may be used by the client only in the context and for the express purpose for which it was intended. Any use of, or reliance on, this document by any third party is that party's sole risk.

COPYRIGHT NOTICE

This drawing is the property of the above referenced Professional and is not to be used for any purpose other than the specific project and site named herein, and cannot be reproduced in any manner without the express written permission from the Professional

09/24/21 ISSUED FOR SPA
12/03/21 RE-ISSUED FOR SPA
19/01/22 RE-ISSUED FOR SPA

PROFESSIONAL SEAL

FOR REVIEW
NOT FOR CONSTRUCTION

PROFESSIONAL IN CHARGE

S. CHERIAN

PROJECT MANAGER

S. LAWRENCE

QUALITY CONTROL

O. KARIMZODA

DRAWN BY

O. KARIMZODA

PROJECT NAME

**CIRCLE K
STORES INC.
R&R No. 52287**

**NEPEAN
ONTARIO**

**1545 WOODROFFE AVENUE
NEPEAN, ON, CANADA
K2G 1W2**



CIRCLE K STORES INC.

PROJECT NUMBER

BE20207036

SHEET TITLE

**ARCHITECTURAL
FUEL PUMP
CANOPY
ELEVATIONS**

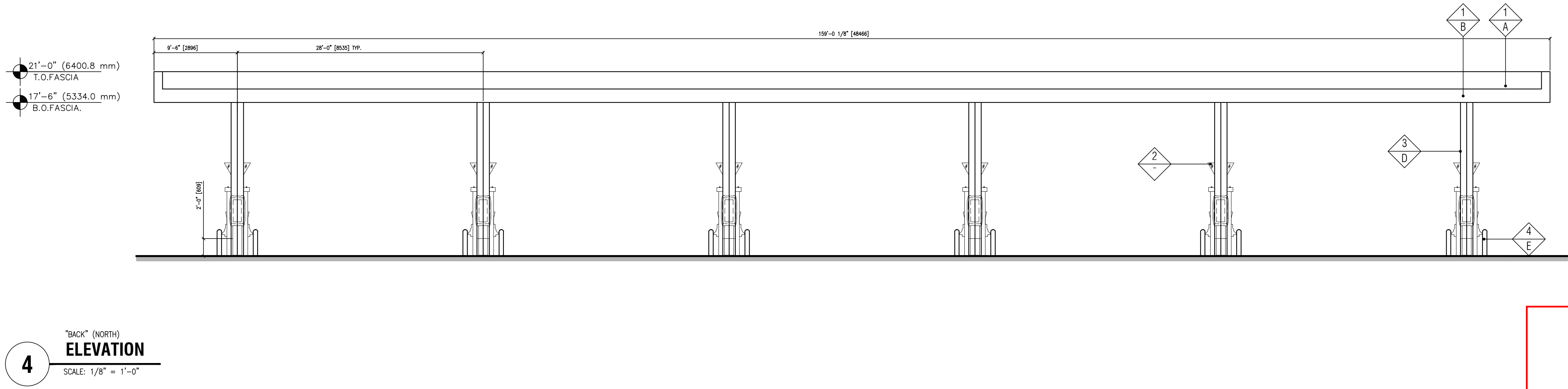
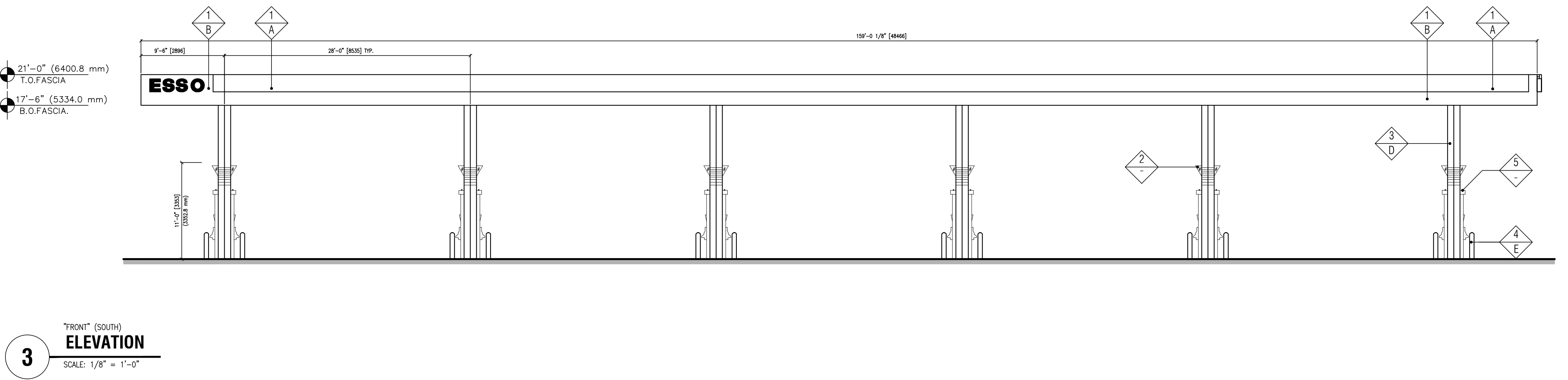
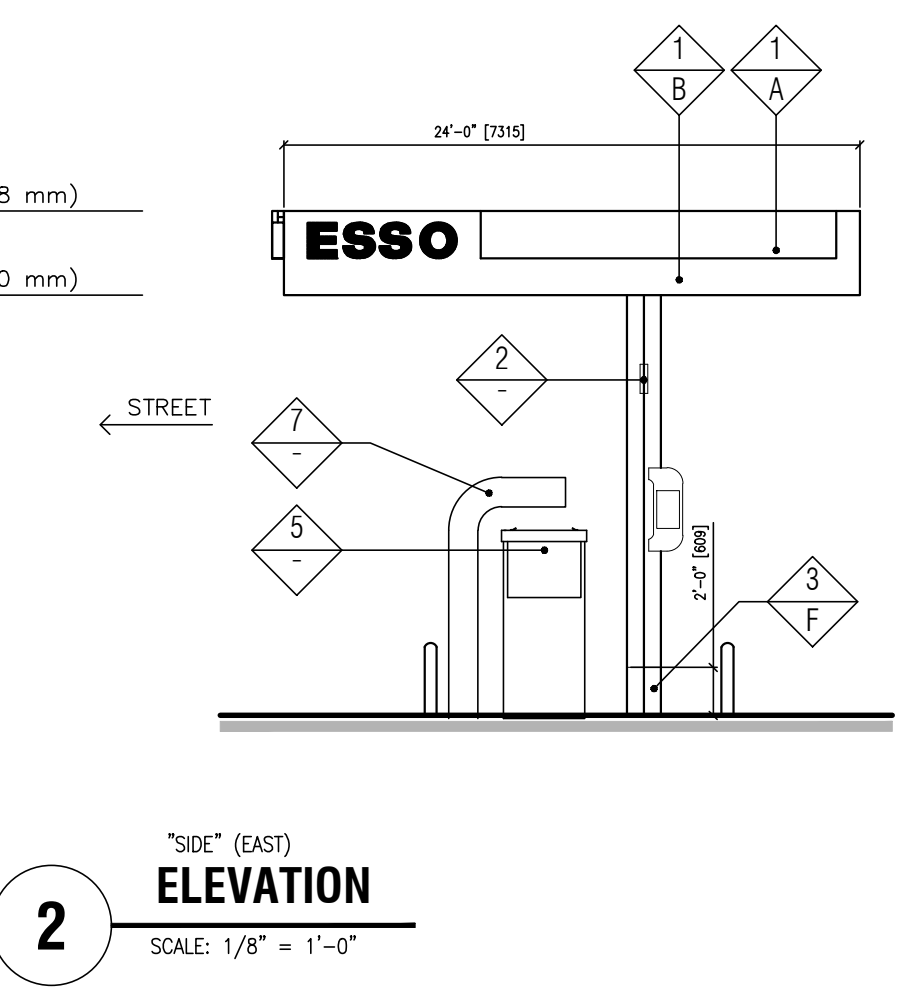
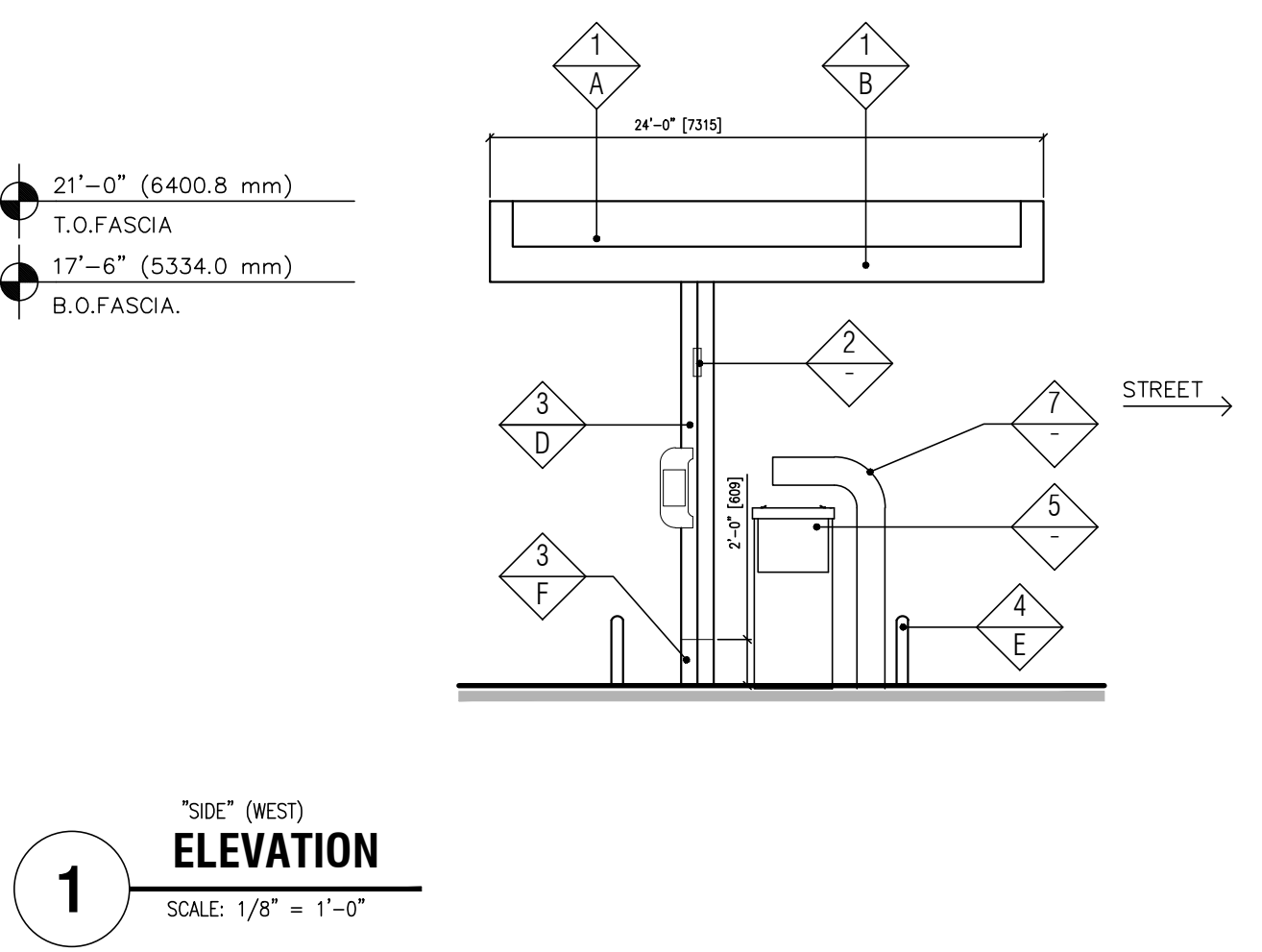
SHEET NUMBER

CA-2

D07-12-21-0056

FINISH SCHEDULE	
FINISH MATERIAL	
1	ACM PANEL "TEX-COTE"
2	COLUMN FLAGS BY SIGNAGE VENDOR, ESSO "SYNERGY" BRANDING
3	STEEL COLUMN WITH PAINT FINISH
4	6" Ø BOLLARD, 36" HIGH
5	FUEL PUMP
6	INTERNALLY ILLUMINATED SIGN UNDER SEPARATE PERMIT
7	ILLUMINATED WAVE SIGNAGE, ESSO "SYNERGY" BRANDING
FINISH COLOR	
A	ESSO RED
B	ESSO WHITE
C	NOT USED
D	RAL9016 SHELL WARM WHITE
E	PVC BOLLARD SLEEVE "DARK GRAY"
F	SHERWIN WILLIAMS - SW6236 - GRAYS HARBOR

- NOTES:
1. THE FASCIA PANELS ARE PRE-FINISHED BY SIGNAGE VENDOR
 2. ALL SIGNS REQUIRE A SEPARATE SUBMITTAL
 3. ALL LIGHTING ON CANOPY TO BE FLUSH MOUNTED WITH FASCIA. SEE ELECTRICAL



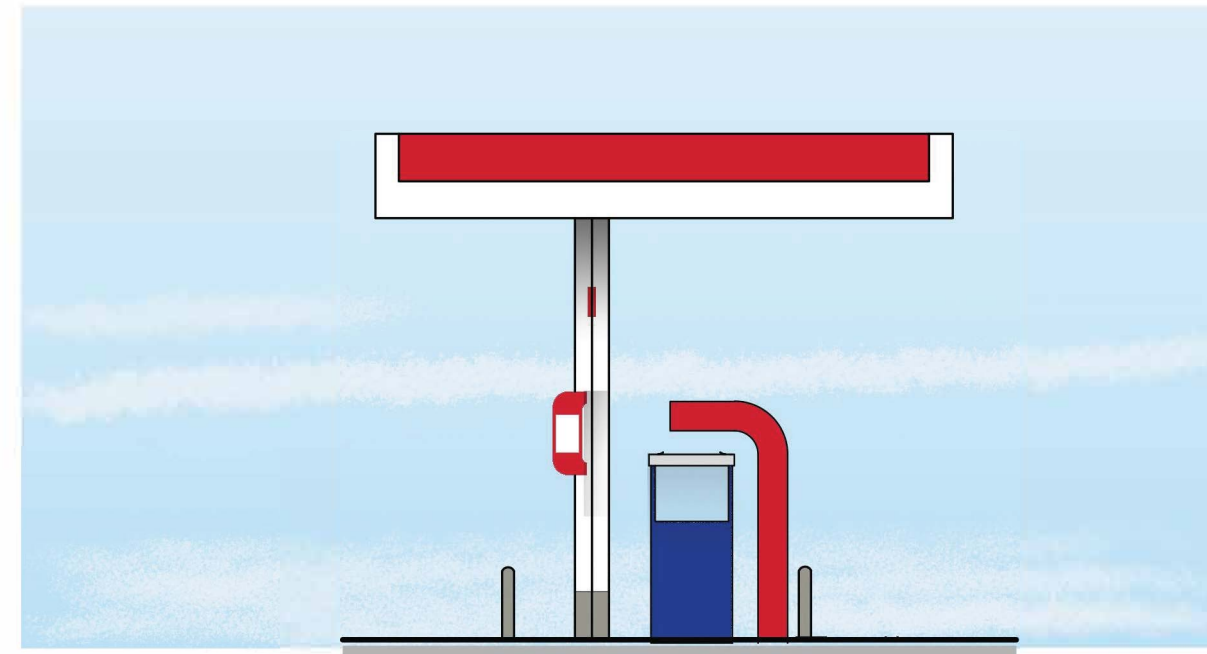
APPROVED
By Allison Hamlin at 12:17 pm, Aug 19, 2022

Allison Hamlin
ALLISON HAMLIN
MANAGER (A), DEVELOPMENT REVIEW WEST
PLANNING, REAL ESTATE & ECONOMIC DEVELOPMENT
DEPARTMENT, CITY OF OTTAWA

Allison Hamlin

ALLISON HAMLIN
MANAGER (A), DEVELOPMENT REVIEW WEST
PLANNING, REAL ESTATE & ECONOMIC DEVELOPMENT
DEPARTMENT, CITY OF OTTAWA

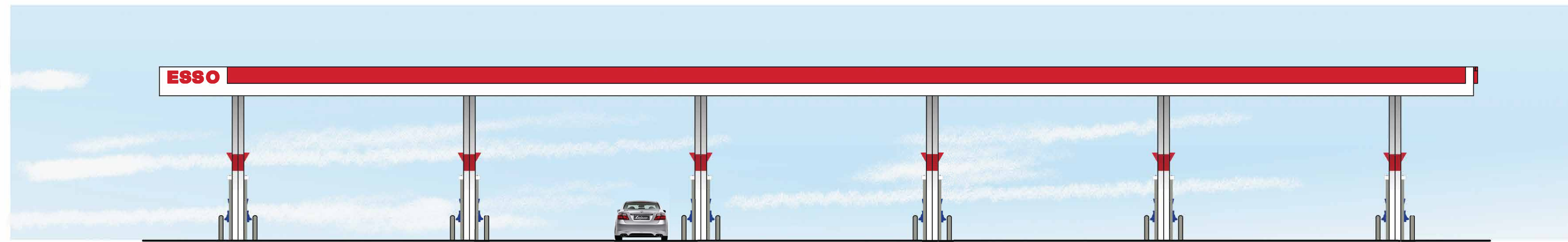
APPROVED
By Allison Hamlin at 12:16 pm, Aug 19, 2022



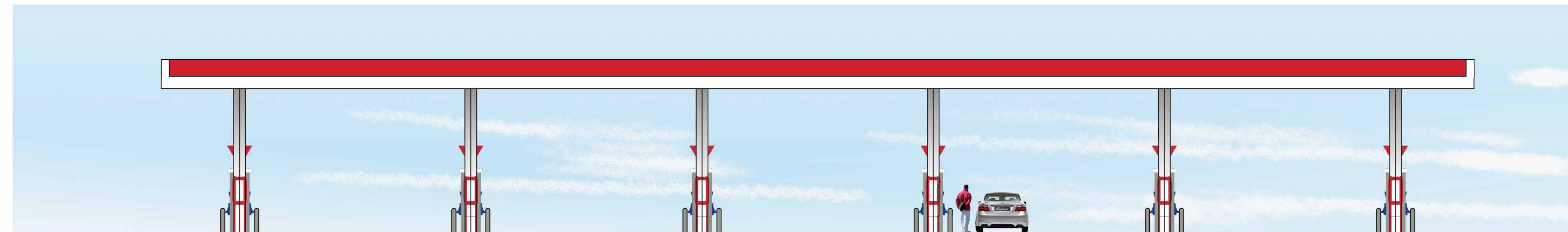
1
"SIDE" (WEST)
ELEVATION
SCALE: 1/8" = 1'-0"



2
"SIDE" (EAST)
ELEVATION
SCALE: 1/8" = 1'-0"



3
"FRONT" (SOUTH)
ELEVATION
SCALE: 1/8" = 1'-0"



4
"BACK" (NORTH)
ELEVATION
SCALE: 1/8" = 1'-0"

PROFESSIONAL SEAL

FOR REVIEW
NOT FOR CONSTRUCTION

PROFESSIONAL IN CHARGE

S. CHERIAN

PROJECT MANAGER

S. LAWRENCE

QUALITY CONTROL

D. CAMERON

DRAWN BY

O. KARIMZODA

PROJECT NAME

CIRCLE K
STORES INC.
R&R No. 52287

NEPEAN
ONTARIO

1545 WOODROFFE AVENUE
NEPEAN, ON, CANADA
K2G 1W2



CIRCLE K STORES INC.

PROJECT NUMBER

BE20207036

SHEET TITLE

ARCHITECTURAL
FUEL PUMP
CANOPY
COLOUR ELEVATIONS

SHEET NUMBER

CA-2-A

COPYRIGHT NOTICE

This drawing is the property of the above referenced Professional and is not to be used for any purpose other than the specific project and site named herein, and cannot be reproduced in any manner without the express written permission from the Professional.

09/24/21 ISSUED FOR SPA
12/03/21 RE-ISSUED FOR SPA
19/01/22 RE-ISSUED FOR SPA



1 "SIDE" (SOUTH) ELEVATION
SCALE: 3/16" = 1'-0"

2 "EXIT" (WEST) ELEVATION
SCALE: 3/16" = 1'-0"



3 "SIDE" (NORTH) ELEVATION
SCALE: 3/16" = 1'-0"

4 "ENTRANCE" (EAST) ELEVATION
SCALE: 3/16" = 1'-0"

APPROVED
By Allison Hamlin at 12:18 pm, Aug 19, 2022

Allison Hamlin
ALLISON HAMLIN
MANAGER (A), DEVELOPMENT REVIEW WEST
PLANNING, REAL ESTATE & ECONOMIC DEVELOPMENT
DEPARTMENT, CITY OF OTTAWA

PROFESSIONAL SEAL

FOR REVIEW
NOT FOR CONSTRUCTION

PROFESSIONAL IN CHARGE

S. CHERIAN
PROJECT MANAGER
S. LAWRENCE
QUALITY CONTROL
O. KARIMZODA
DRAWN BY
O. KARIMZODA

PROJECT NAME

CIRCLE K STORES INC.
R&R No. 52287

NEPEAN ONTARIO

1545 WOODROFFE AVENUE
NEPEAN, ON, CANADA
K2G 1W2



CIRCLE K STORES INC.

PROJECT NUMBER

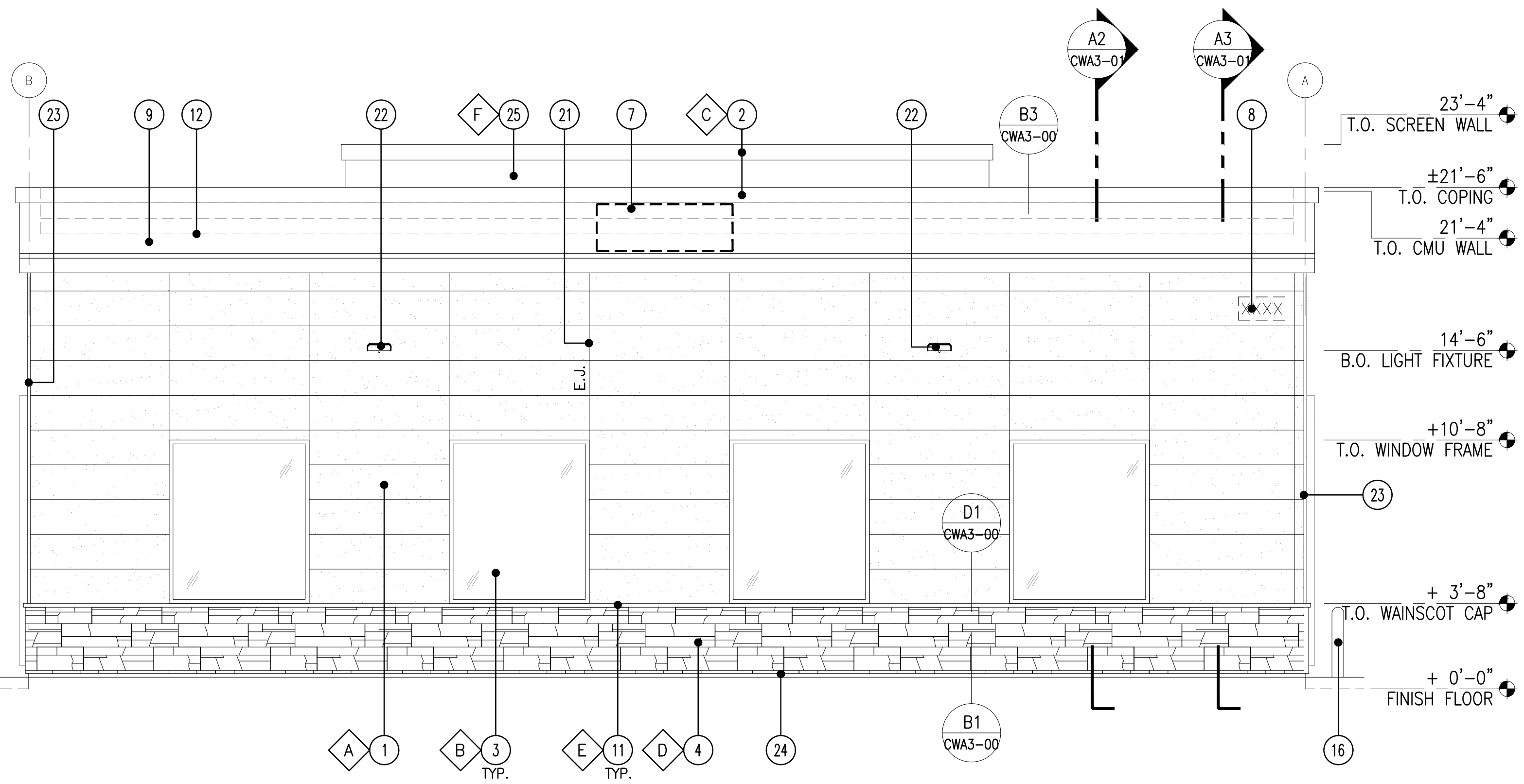
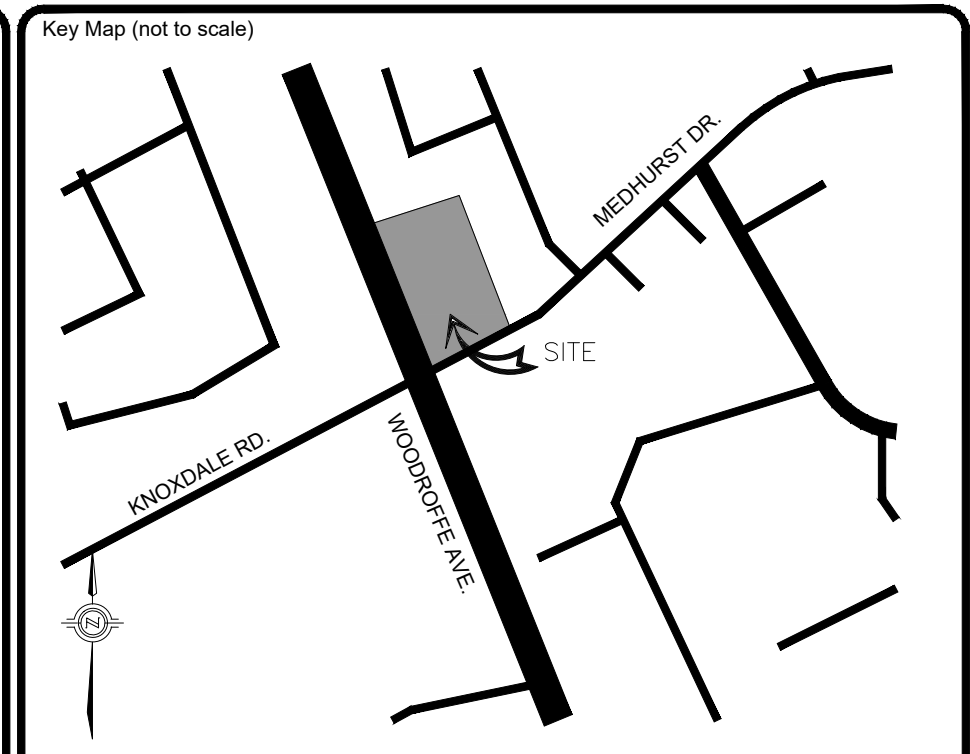
BE20207036

SHEET TITLE

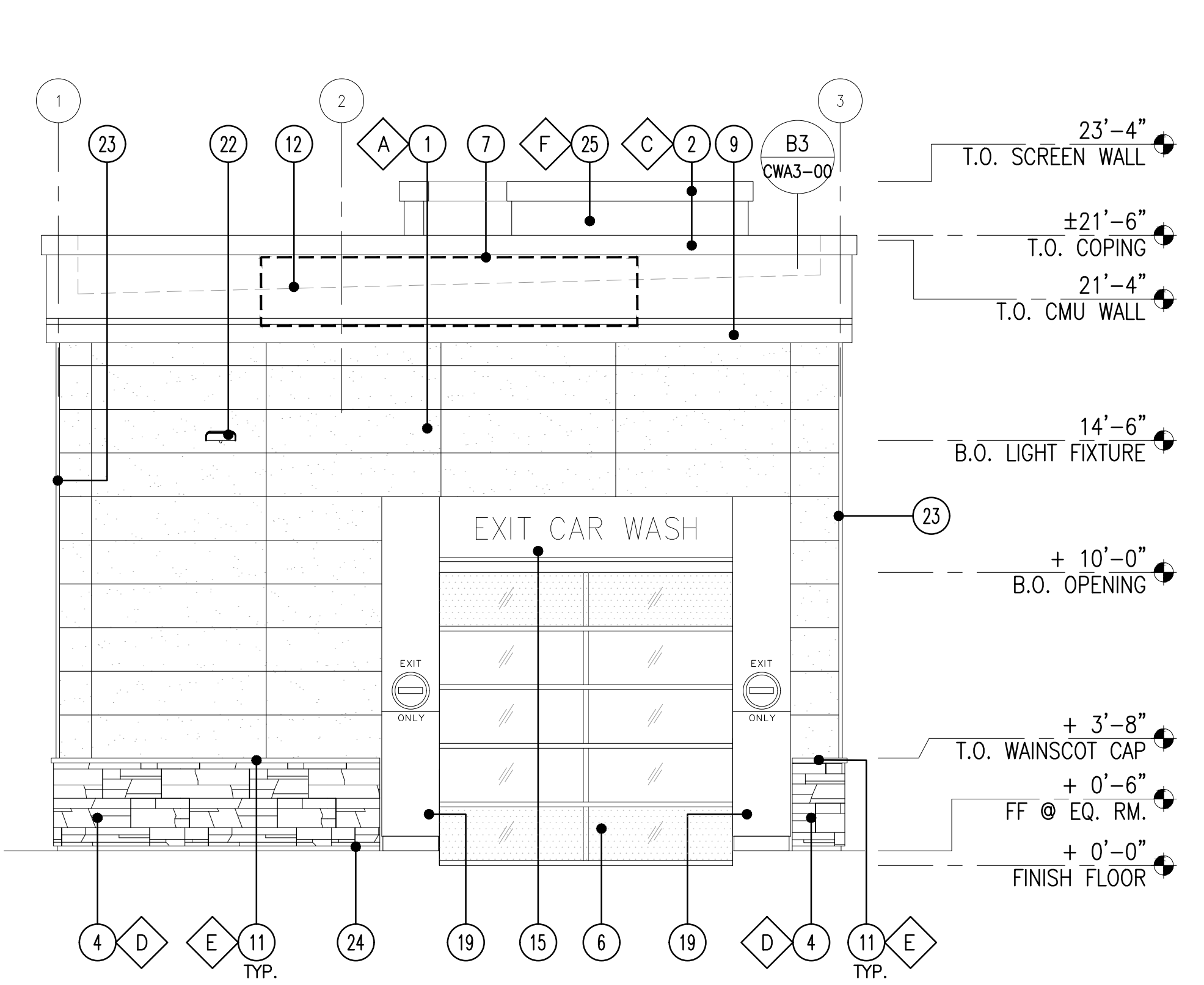
ARCHITECTURAL
CAR WASH
COLOUR
ELEVATIONS

SHEET NUMBER

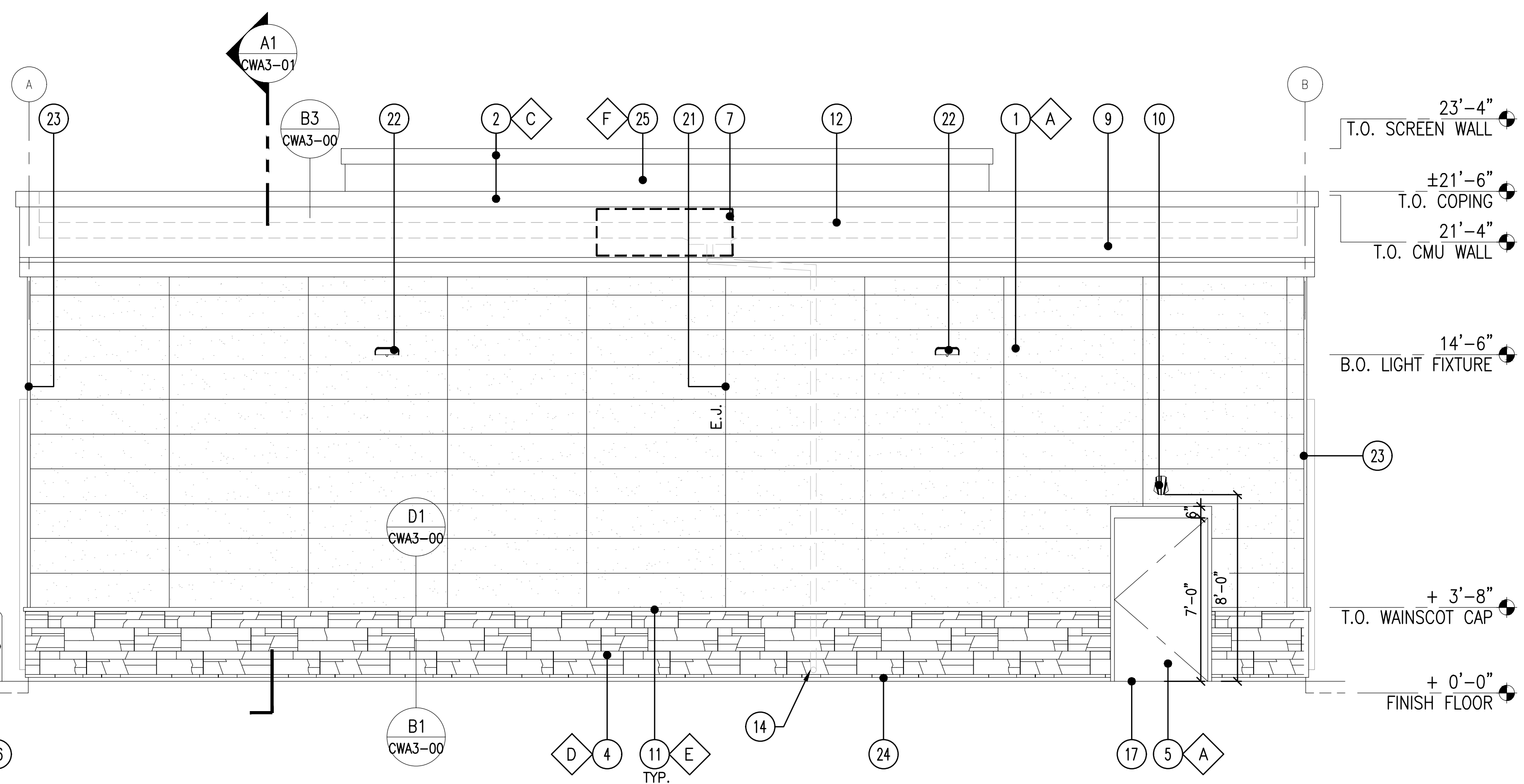
A2.0-CW-A



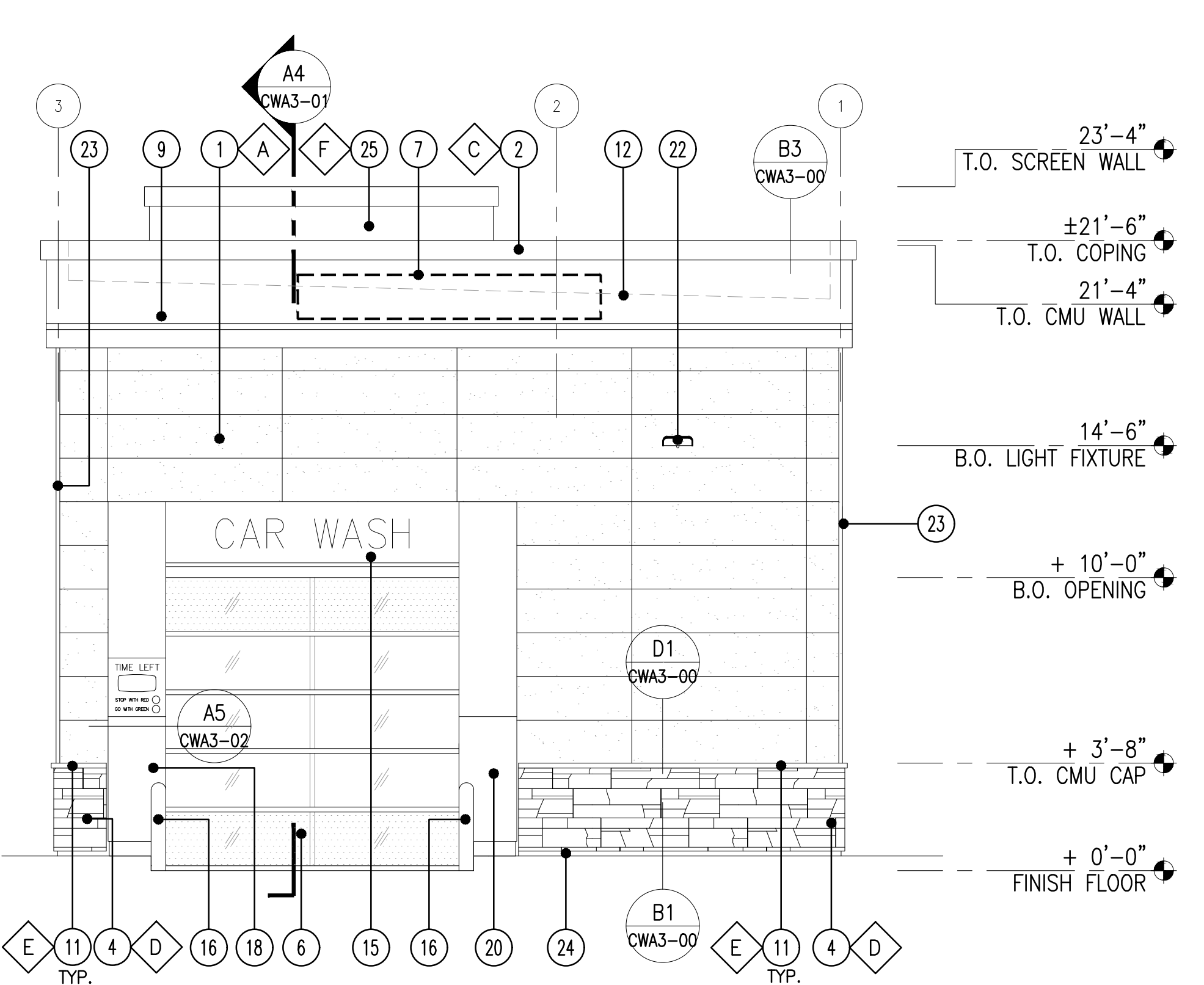
4 FRONT ELEVATION - SOUTH
SCALE: 1/4"=1'-0"



2 SIDE ELEVATION - WEST
SCALE: 1/4"=1'-0"



3 REAR ELEVATION - NORTH
SCALE: 1/4"=1'-0"



1 SIDE ELEVATION - EAST
SCALE: 1/4"=1'-0"

KEY NOTES (x)

- NICHIHA FIBER CEMENT WALL PANEL SYSTEM
- PRE-FINISHED METAL COPING
- WINDOW FRAME W/ GRAY TINTED GLASS WINDOW SYSTEM. PAINT WINDOW FRAME TO MATCH DARK BRONZE
- 1 3/8" THK. X 6" NICHIHA KURASTONE HIGH FIBER CEMENT WAINSCOT
- INSULATED FRP DOOR
- POLYCARBONATE OVERHEAD DOOR, SEE DOOR SCHEDULE.
- LOGO/ CAR WASH SIGN (SHOWN DASHED) PROVED AND INSTALLED BY SIGNAGE VENDOR - SIGNAGE UNDER SEPARATE PERMIT.
- ADDRESS SIGN NUMBERS, 8" HIGH & 1" CONTRASTING BACKGROUND
- ACM BAND PANEL PROVIDED & INSTALLED BY SIGNAGE VENDOR
- EXTERIOR WALL-MOUNTED LIGHTING ABOVE EXTERIOR DOOR
- 1-1/2" HIGH NICHIHA FIBER CEMENT CAP INSTALL PER MFR. SPECS.
- LINE OF ROOF
- SPARE
- ROOF DRAIN WITH SHEEP TONGUE, CONTRACTOR TO PROVIDE A CONCRETE SPLASH BLOCK AT THIS DOWNSPOUT LOCATION AT LANDSCAPE AREA. SEE DETAIL 05/CWA1-01.
- PRE-FINISHED ACM PORTAL HEADER, PROVIDE POWER FOR LED LIGHTS AND BACK LIT LETTERS. COORDINATE WITH VENDOR.
- ISLAND/SIDEWALK WITH BROOM FINISH, SLOPED 1/4" PER FT. AWAY FROM BUILDING. REFER TO CIVIL DRAWINGS.
- PRE-FINISHED ACM ENTRANCE PORTAL LEG W/ TIMER. PROVIDE POWER FOR TIMER. COORDINATE WITH VENDOR.

FINISH SCHEDULE

- A - **NICHIHA TUFF BLOCK
- COLOR TO MATCH #SW 6095 TOASTY
- B - 1" INSULATED, DOUBLE PANELED CLEAR GLASS
- C - *SHERWIN WILLIAMS #SW 6090 - JAVA
- FIRESTONE MANSARD BROWN SR (USE FOR PRE-FINISHED METAL COPING)
- D - **NICHIHA LEDGESTONE BLUFF
- E - **NICHIHA CHISLEED SILL TAN
- F - METAL PANEL
- COLOR TO MATCH #SW 6095 TOASTY

* USE SHERWIN WILLIAMS MANUFACTURER ONLY
** COLOR TO BE PRE-ORDERED TO ENSURE AVAILABILITY AT TIME OF CONSTRUCTION
*** PURCHASED BY CIRCLE K/INSTALLED BY C.C.
G.C. TO COORDINATE WITH CK PM AND OWNER'S REP circlek@nichha.com

APPROVED
By Allison Hamlin at 12:17 pm, Aug 19, 2022

Allison Hamlin
ALLISON HAMLIN
MANAGER (A), DEVELOPMENT REVIEW WEST
PLANNING, REAL ESTATE & ECONOMIC DEVELOPMENT
DEPARTMENT, CITY OF OTTAWA

No.	ISSUED FOR INFORMATION	REVISIONS	Date	By	C.F.

Disclaimer: exp Services Inc. This file is being supplied as a matter of course and is not to be taken as an agreement to, associated with or in placement of copies of the drawings, and only print copies of drawings with signed stamps are to be considered as true and final as issued by our office. Thank you.

exp Services Inc.
1-1-905.793.9800 | 1-1-905.793.0641
1595 Clark Boulevard
Brampton, ON L6T 4V1
Canada
www.exp.com



- BUILDINGS • EARTH & ENVIRONMENT • ENERGY •
- INDUSTRIAL • INFRASTRUCTURE • SUSTAINABILITY •

Owner/Client:



Location:
1545 WOODROFFE AVE.
OTTAWA, ON

Title:
EXTERIOR ELEVATIONS

Designed By:	Drawn By: J.B.	Checked By: C.F.
Scale: AS NOTED	Date: MARCH 2022	City Drawing No.:
Project No.: BRM00606364-B0	Drawing No.:	CWA2-00

CITY DWG. # 17094

Unless otherwise agreed in a written contract between Wood and its client, this document (1) contains information, data and design that is confidential and may not be copied or disclosed; and (2) may be used by the client only in the context and for the express purpose for which it was intended. Any use of, or reliance on, this document by any third party is that party's sole risk.

COPYRIGHT NOTICE
This drawing is the property of the above referenced Professional and is not to be used for any purpose other than the specific project and site named herein, and cannot be reproduced in any manner without the express written permission from the Professional.

09/24/21 ISSUED FOR SPA
12/03/21 RE-ISSUED FOR SPA
19/01/22 RE-ISSUED FOR SPA

PROFESSIONAL SEAL

FOR REVIEW
NOT FOR CONSTRUCTION

PROFESSIONAL IN CHARGE
S. CHERIAN
PROJECT MANAGER
S. LAWRENCE
QUALITY CONTROL
O. KARIMZODA
DRAWN BY
O. KARIMZODA

PROJECT NAME
CIRCLE K STORES INC.
R&R No. 52287
NEPEAN
ONTARIO

1545 WOODROFFE AVENUE
NEPEAN, ON, CANADA
K2G 1W2



CIRCLE K STORES INC.

PROJECT NUMBER
BE20207036

SHEET TITLE
ARCHITECTURAL
C-STORE
AND FIRE & FLOWER
ELEVATIONS

SHEET NUMBER
A2.1

7000 NATIONAL PROTOTYPE

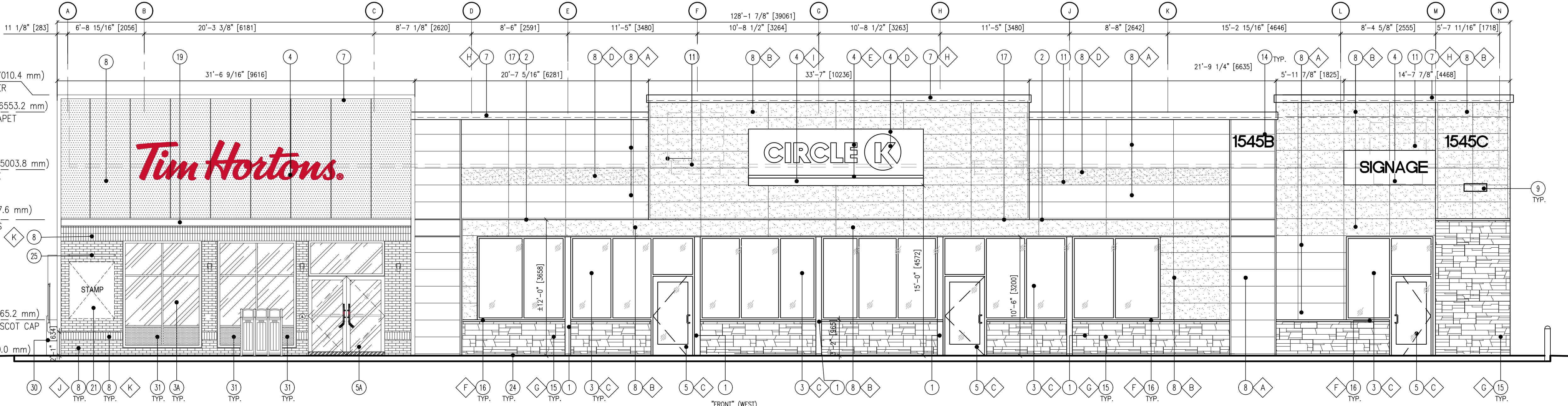
KEY NOTES

- STEEL COLUMN WRAP WITH BREAK METAL
- LINE OF CANOPY / SOFFIT
- DARK BRONZE ANODIZED WINDOW FRAMING W/ CLEAR GLASS WINDOW SYSTEM. 3A - ANODIZED ALUMINUM FRAMES
- INTERNALLY ILLUMINATED SIGN WITH BLOCKING (UNDER SEPARATE PERMIT)
- DARK BRONZE ANODIZED DOOR W/ CLEAR GLASS STOREFRONT SYSTEM. 5A - ANODIZED ALUMINUM FRAMES
- SERVICE DOOR. PAINT TO MATCH SURROUNDING WALL
- PRE-FINISHED METAL COPING
- 3/8" THK. X 17 3/8" H X 71 3/8" WALL PANEL FIBER CEMENT
- WALL MOUNTED LIGHT FIXTURE. COLOR: BLACK. SEE ELECTRICAL PLAN
- NOT USED.
- ROOF LINE AND HVAC UNITS
- 1-1/2" STAINLESS STEEL CORNER EDGE, TYP. TO ALL CORNERS
- DOWNSPOUT, RE: PLUMBING PLAN
- ADDRESSING LOCATION: 8" TALL INCH BLACK NUMBERS. FINAL AREA LOCATION TO BE DETERMINED BY FIRE DEPARTMENT.
- 1 3/8" THK. X 6" HIGH FIBER CEMENT WAINSCOT
- 1-1/2" HIGH FIBER CEMENT CAP INSTALL PER MFR. SPECS.
- NICHHA ESSENTIAL "OVERHANG" FLASHING
- PARAPET WALL BEYOND
- GC TO INSTALL C-CHANNEL c/w INTEGRATED PERIMETER LIGHTING.
- EXTERIOR POP FRAME. SUPPLIED BY TDL GROUP AND INSTALLED BY G.C.
- APPROXIMATE LOCATION OF PROVINCE STAMP BY SIGN COMPANY.
- EMERGENCY FUEL SHUT-OFF SWITCH, REFER TO SHEET F1.0 - FUEL PIPING FLOOR PLAN
- INSULATED METAL DOOR
- NICHHA ESSENTIAL "STARTER" FLASHING
- EXTERIOR LED SIGN LIGHT, REFER TO ELECTRICAL DRAWINGS.
- EXTERIOR FINISH TO EXTEND ABOVE SIDEWALK/GRADE, SEE DET. 8/A8.1 & 11/A8.1
- LEADER BOX. SEE PLUMBING DWGS.
- EMERGENCY OVERFLOW SCUPPER. SEE PLUMBING DWGS.
- WALL PACK, REFER TO ELECTRICAL DRAWINGS.
- DRIVE-THRU WINDOW W/ INSULATED PANEL.
- INSULATED METAL PANEL.
- WALL SCIENCE, REFER TO ELECTRICAL DRAWINGS.

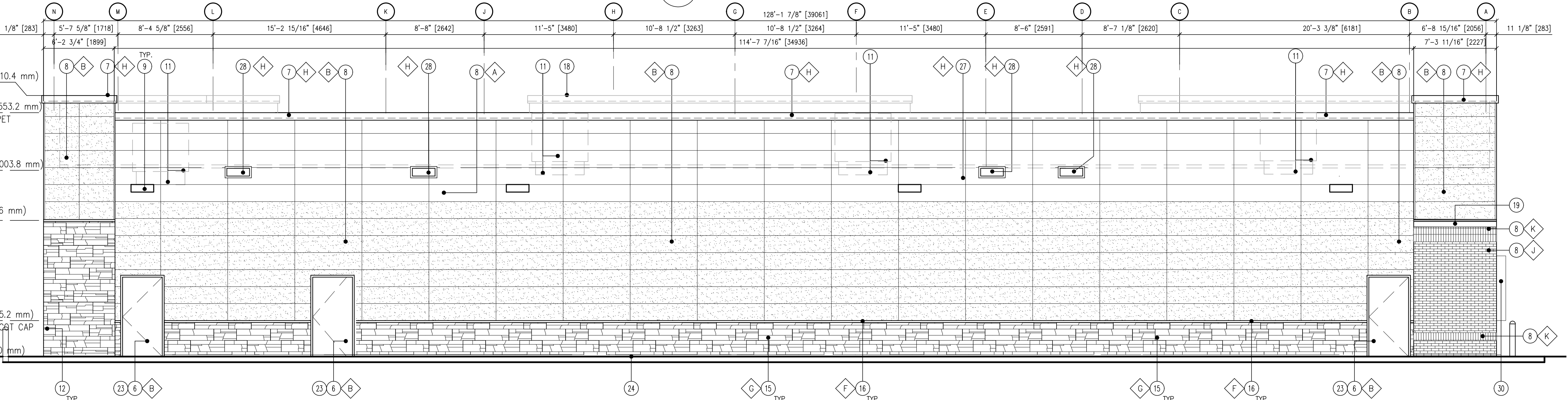
FINISH SCHEDULE

- A - ***NICHHA TUFF BLOCK - COLOR TO MATCH #SW 6095 TOASTY
- B - ***NICHHA TUFF BLOCK - COLOR TO MATCH #SW 6115 TOTALLY TAN
- C - 1" INSULATED, DOUBLE PANED CLEAR GLASS
- D - *SHERWIN WILLIAMS #SW 4081 - **SAFETY RED
- E - *SHERWIN WILLIAMS #SW 7005 - CIRCLE K WHITE
- F - ***NICHHA CHISELED SILL TAN
- G - ***NICHHA LEDGESTONE BLUFF
- H - *SHERWIN WILLIAMS #SW 6090 - FIRESTONE MANSARD BROWN SR (USE FOR PRE-FINISHED METAL COPING)
- I - CIRCLE K ORANGE #PMS 144
- J - ***NICHHA BRICK SERIES, VINTAGEBRICK ALEXANDRIA BUFF
- K - ***NICHHA BRICK SERIES, VINTAGEBRICK WHITE WASH

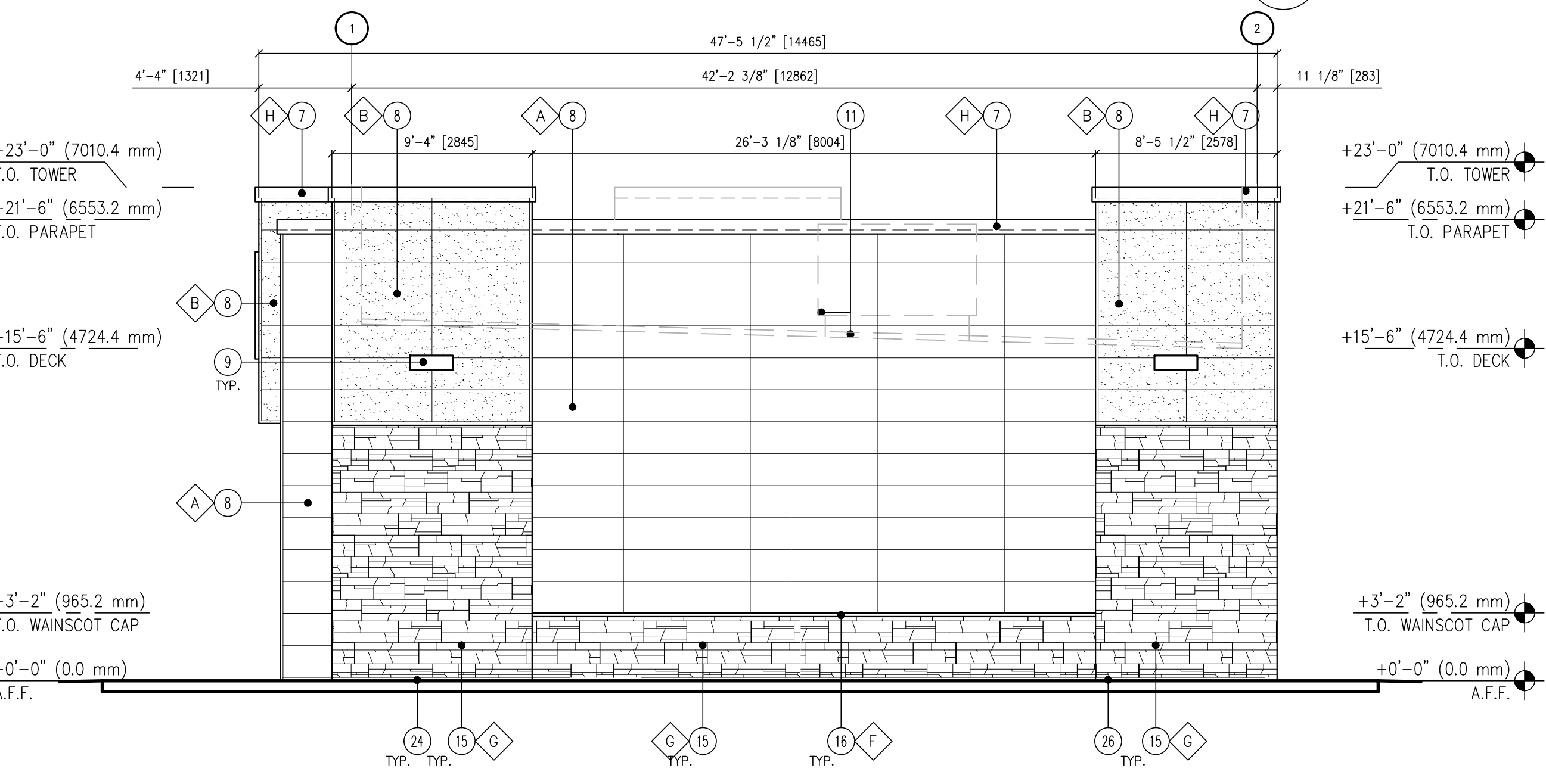
* USE SHERWIN WILLIAMS MANUFACTURER ONLY
** COLOR TO BE PRE-ORDERED TO ENSURE AVAILABILITY AT TIME OF CONSTRUCTION
*** COORDINATE WITH OWNER'S REP



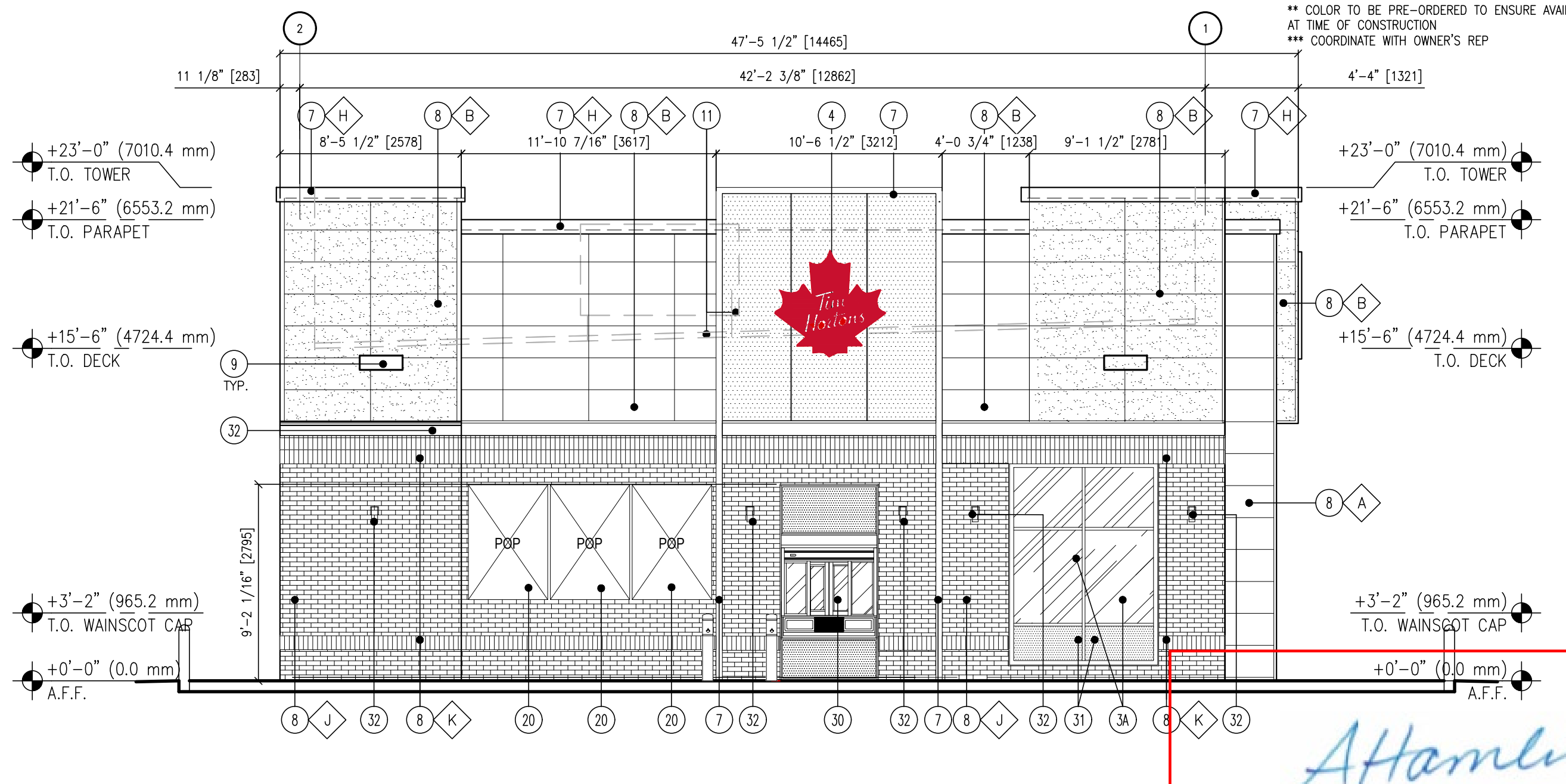
1 FRONT (WEST) ELEVATION
SCALE: 3/16" = 1'-0"



2 BACK (EAST) ELEVATION
SCALE: 3/16" = 1'-0"



3 SIDE (SOUTH) ELEVATION
SCALE: 3/16" = 1'-0"



4 SIDE (NORTH) ELEVATION
SCALE: 3/16" = 1'-0"

APPROVED
By Allison Hamlin at 12:16 pm, Aug 19, 2022

Allanlin
ALLISON HAMLIN
MANAGER (A), DEVELOPMENT REVIEW WEST
PLANNING, REAL ESTATE & ECONOMIC DEVELOPMENT
DEPARTMENT, CITY OF OTTAWA

COPYRIGHT NOTICE

This drawing is the property of the above referenced Professional and is not to be used for any purpose other than the specific project and site named herein, and cannot be reproduced in any manner without the express written permission from the Professional.

09/24/21 ISSUED FOR SPA
12/03/21 RE-ISSUED FOR SPA
19/01/22 RE-ISSUED FOR SPA

Allison Hamlin

ALLISON HAMLIN
MANAGER (A), DEVELOPMENT REVIEW WEST
PLANNING, REAL ESTATE & ECONOMIC DEVELOPMENT
DEPARTMENT, CITY OF OTTAWA

APPROVED

By Allison Hamlin at 12:15 pm, Aug 19, 2022

PROFESSIONAL SEAL

FOR REVIEW
NOT FOR CONSTRUCTION

PROFESSIONAL IN CHARGE

S. CHERIAN
PROJECT MANAGER
S. LAWRENCE
QUALITY CONTROL
O. KARIMZODA
DRAWN BY
O. KARIMZODA

PROJECT NAME

CIRCLE K STORES INC.
R&R No. 52287

NEPEAN
ONTARIO

1545 WOODROFFE AVENUE
NEPEAN, ON, CANADA
K2G 1W2



CIRCLE K STORES INC.

PROJECT NUMBER

BE20207036

SHEET TITLE

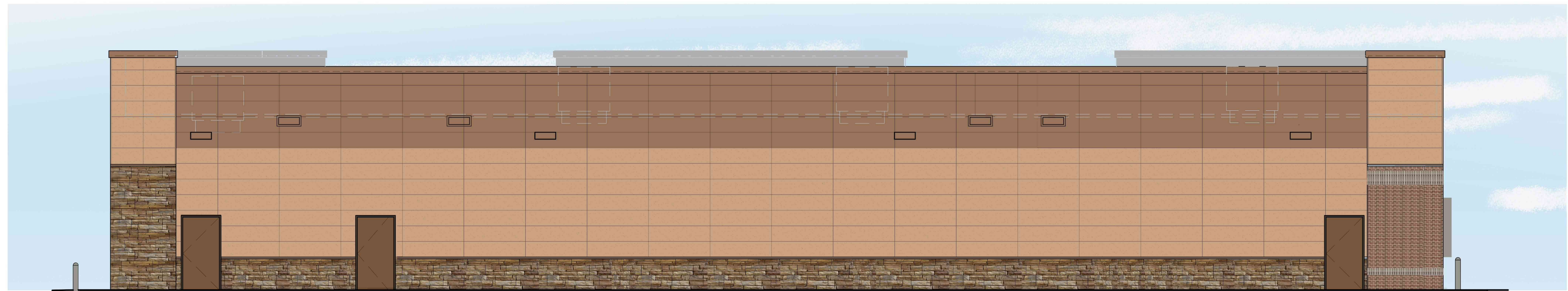
ARCHITECTURAL
C-STORE
AND FIRE & FLOWER
COLOUR ELEVATIONS

SHEET NUMBER

A2.1-A



1 "FRONT" (WEST)
ELEVATION
SCALE: 3/16" = 1'-0"



2 "BACK" (EAST)
ELEVATION
SCALE: 3/16" = 1'-0"



3 "SIDE" (SOUTH)
ELEVATION
SCALE: 3/16" = 1'-0"



4 "SIDE" (NORTH)
ELEVATION
SCALE: 3/16" = 1'-0"