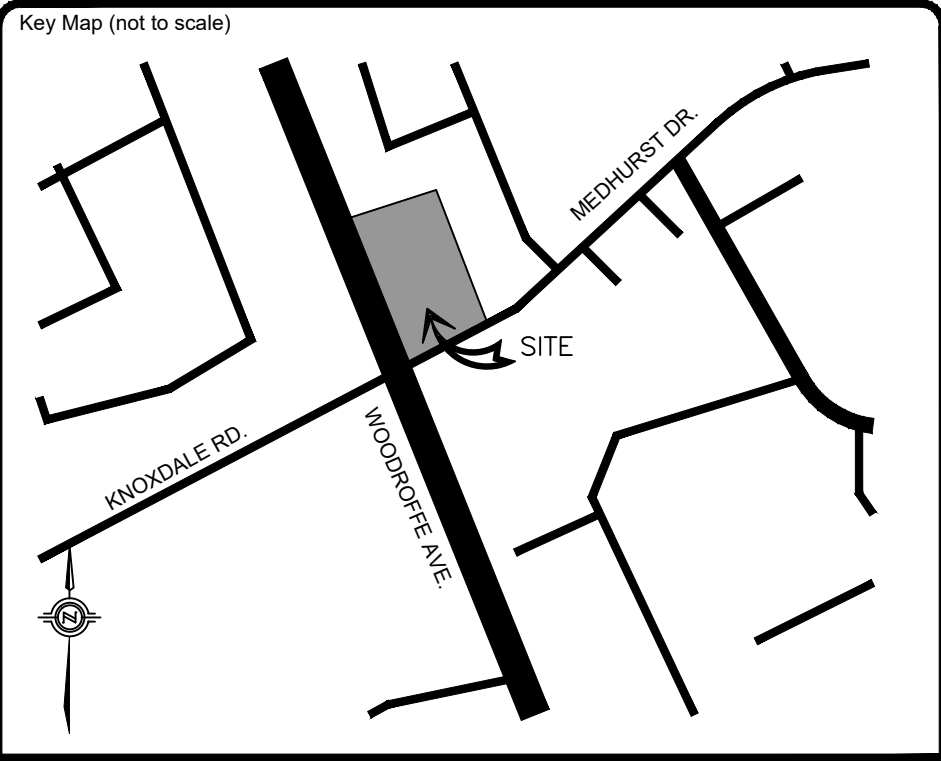
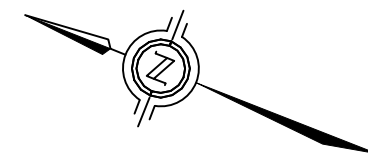


*All Hamlin*

**ALLISON HAMLIN**  
**MANAGER (A), DEVELOPMENT REVIEW WEST**  
**PLANNING, REAL ESTATE & ECONOMIC DEVELOPMENT**  
**DEPARTMENT, CITY OF OTTAWA**

**APPROVED**  
 By Allison Hamlin at 12:11 pm, Aug 19, 2022



**LEGEND:**

- IRON BAR
- BENCHMARK
- ⊕ EX FIRE HYDRANT
- ⊕ EX LIGHT POLE
- ⊕ EX LIGHT STANDARD
- ⊕ EX STORM MH
- ⊕ EX SANITARY MH
- ⊕ EX STORM CB
- ⊕ EX WATER VALVE
- ⊕ EX VALVE CHAMBER
- ⊕ EX BELL & HYDRO POLE
- ⊕ EX GUY WIRE AND ANCHOR
- ⊕ EX TRAFFIC SIGNAL
- ⊕ EX GAS VALVE
- ⊕ EX SIGN
- ⊕ EX TREE
- - - SUBJECT PROPERTY
- - - PROPERTY LINE
- - - EX CONC. CURB
- - - EX CENTERLINE OF DITCH
- - - EX ROAD CENTERLINE
- - - EX FENCE
- - - EX STORM SEWER
- - - EX CONTOUR
- - - NEW YARD LIGHT
- - - NEW 1.8M HIGH WOOD FENCE
- - - OVERLAND FLOW
- - - DRAINAGE AREA BOUNDARY
- ### CATCHMENT I.D.
- ### AREA (ha) | RUN-OFF COEFFICIENT

No.	REVISIONS	Date	By	App.
E	PER SITE CHANGES	JULY 15 2022	YS	J.S
D	RE-ISSUED FOR SPA	MAR 28 2022	ML	J.S
C	RE-ISSUED FOR SPA	DEC 03 2021	ML	J.S
B	RE-ISSUED FOR SPA	SEPT 24 2021	ML	J.S
A	ISSUED FOR SPA	APR 27 2021	LMB	J.S

**exp Services Inc.**  
 +1 905.793.9800 | +1 905.793.0641  
 1595 Clark Boulevard  
 Brampton, ON L6T 4V1  
 Canada  
[www.exp.com](http://www.exp.com)

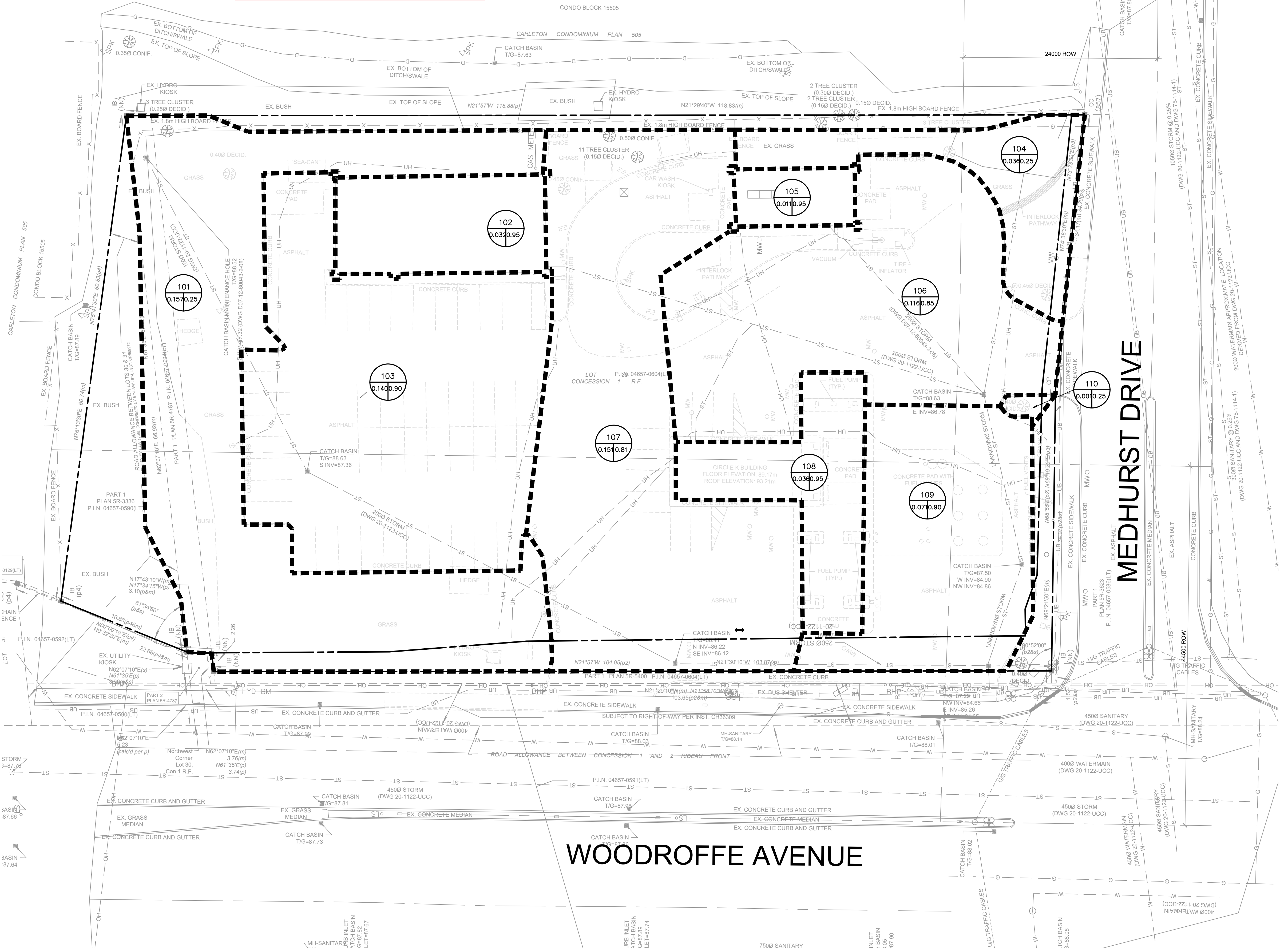
- BUILDINGS • EARTH & ENVIRONMENT • ENERGY •
- INDUSTRIAL • INFRASTRUCTURE • SUSTAINABILITY •

Owner/Clien:

Location:  
**1545 WOODROFFE AVE.**  
**OTTAWA, ON**

Title:  
**PRE-DEVELOPMENT DRAINAGE PLAN**

Designed By: L.M.B.	Drawn By: L.M.B.	Checked By: J.S.
Scale: 1:250	Date: APRIL 2020	City Drawing No.:
Project No.: BRM00606364-B0		Drawing No.: <b>C06</b>



**WOODROFFE AVENUE**

**MEDHURST DRIVE**