

LEGEND:

- IRON BAR
- BENCHMARK
- FIRE HYDRANT
- LIGHT POLE
- LIGHT STANDARD
- STORM MH
- SANITARY MH
- STORM CB
- WATER VALVE
- VALVE CHAMBER
- BELL & HYDRO POLE
- GLY WIRE AND ANCHOR
- TRAFFIC SIGNAL
- GAS VALVE
- SIGN
- TREE

SUBJECT PROPERTY

- PROPERTY LINE
- CONC. CURB
- CENTERLINE OF DITCH
- ROAD CENTERLINE
- FENCE
- STORM SEWER
- CONTOUR
- NEW YARD LIGHT
- NEW STORM MH
- NEW SANITARY MH
- NEW STORM CB
- NEW STORM CBMH
- NEW ILLUMINATED BOLLARD
- NEW CONC. CURB
- NEW CURB CUT/DEPRESSED CURB
- ELEVATION
- OVERLAND FLOW
- DRAINAGE AREA BOUNDARY
- CATCHMENT I.D.
- AREA (ha) | RUN-OFF COEFFICIENT

No.	REVISIONS	Date	By	App.
E	PER SITE CHANGES	JULY 15 2022	ML	J.S.
D	RE-ISSUED FOR SPA	MAR 28 2022	ML	J.S.
C	RE-ISSUED FOR SPA	DEC 03 2021	ML	J.S.
B	RE-ISSUED FOR SPA	SEPT 24 2021	ML	J.S.
A	ISSUED FOR SPA	APR 27 2021	LMB	J.S.

LICENSED PROFESSIONAL ENGINEER
 J.D. STERN
 100232894
 July 15/22
 PROVINCE OF ONTARIO

exp Services Inc.
 +1 905.793.9800 | +1 905.793.0641
 1595 Clark Boulevard
 Brampton, ON L6T 4V1
 Canada
 www.exp.com

exp.

- BUILDINGS • EARTH & ENVIRONMENT • ENERGY •
- INDUSTRIAL • INFRASTRUCTURE • SUSTAINABILITY •

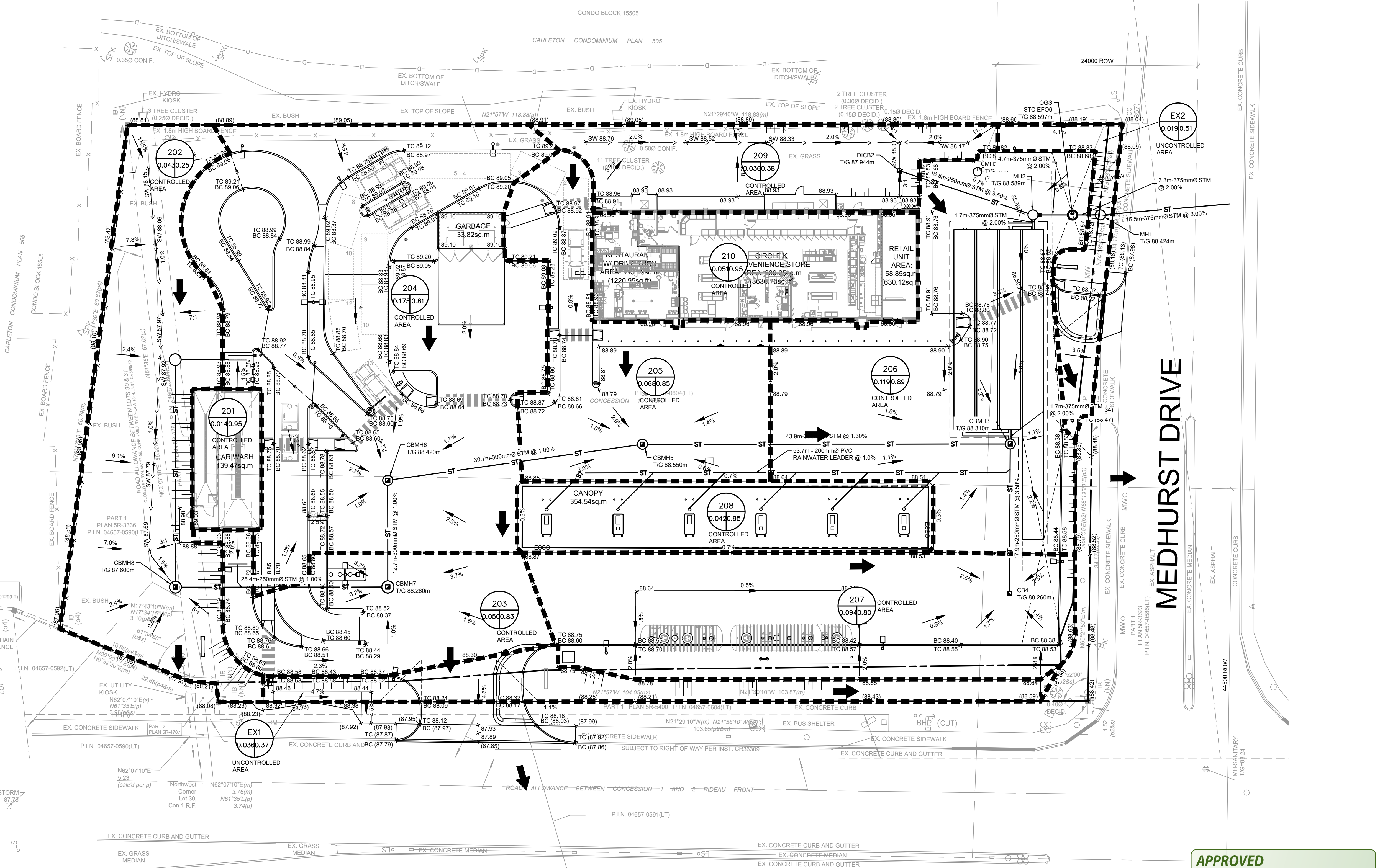
Owner/Cliet:

CIRCLE K

Location:
 1545 WOODROFFE AVE.
 OTTAWA, ON

Title:
 POST-DEVELOPMENT
 DRAINAGE PLAN

Designed By: L.M.B. | Drawn By: L.M.B. | Checked By: J.S.
 Scale: 1:250 | Date: APRIL 2020 | City Drawing No.:
 Project No.: BRM00606364-B0 | Drawing No.: **C04**
 CITY DWG. # 17094



APPROVED
 By Allison Hamlin at 12:11 pm, Aug 19, 2022

All Hamlin

ALLISON HAMLIN
 MANAGER (A), DEVELOPMENT REVIEW WEST
 PLANNING, REAL ESTATE & ECONOMIC DEVELOPMENT
 DEPARTMENT, CITY OF OTTAWA

WOODROFFE AVENUE

MEDHURST DRIVE

