

LEGEND:

- IRON BAR
- BENCHMARK
- EX. FIRE HYDRANT
- EX. LIGHT POLE
- EX. LIGHT STANDARD
- EX. STORM MH
- EX. SANITARY MH
- EX. STORM CB
- EX. WATER VALVE
- EX. VALVE CHAMBER
- EX. BELL & HYDRO POLE
- EX. GUY WIRE AND ANCHOR
- EX. TRAFFIC SIGNAL
- EX. GAS VALVE
- EX. SIGN
- EX. TREE
- SUBJECT PROPERTY
- PROPERTY LINE
- EX. CENTERLINE OF DITCH
- EX. ROAD CENTERLINE
- EX. FENCE
- EX. STORM SEWER
- EX. CONTOUR
- NEW YARD LIGHT
- NEW STORM MH
- NEW SANITARY MH
- NEW STORM CB
- NEW STORM CBMH
- NEW CONC. CURB
- NEW CURB CUT/DEPRESSED CURB
- FIRE ROUTE SIGN
- NEW 1.5m HIGH WOOD FENCE

No.	REVISIONS	Date	By	App.
C	RE-ISSUED FOR SPA	DEC 03 2021	ML	J.S.
B	RE-ISSUED FOR SPA	SEPT 24 2021	ML	J.S.
A	ISSUED FOR SPA	APR 27 2021	LMB	J.S.

LICENSED PROFESSIONAL ENGINEER
 J.D. STERN
 100232894
 Dec. 8/2021
 PROVINCE OF ONTARIO

exp Services Inc.
 +1 905.793.9800 | +1 905.793.0641
 1595 Clark Boulevard
 Brampton, ON L6T 4V1
 Canada
 www.exp.com

exp.

- BUILDINGS • EARTH & ENVIRONMENT • ENERGY •
- INDUSTRIAL • INFRASTRUCTURE • SUSTAINABILITY •

Owner/Client:

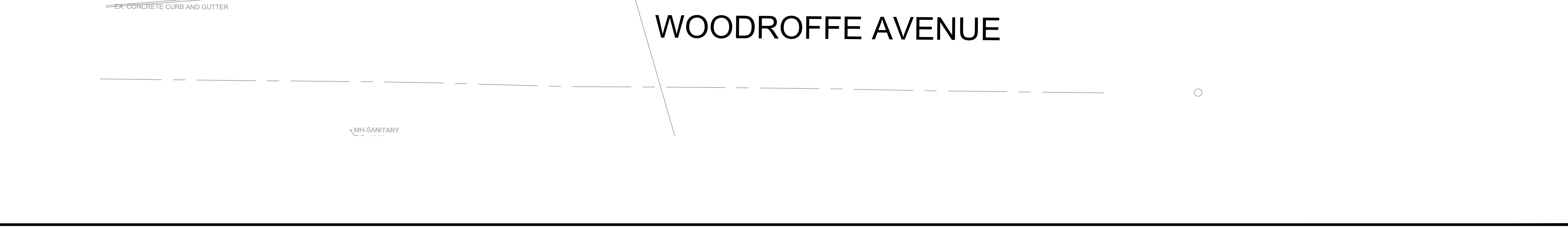
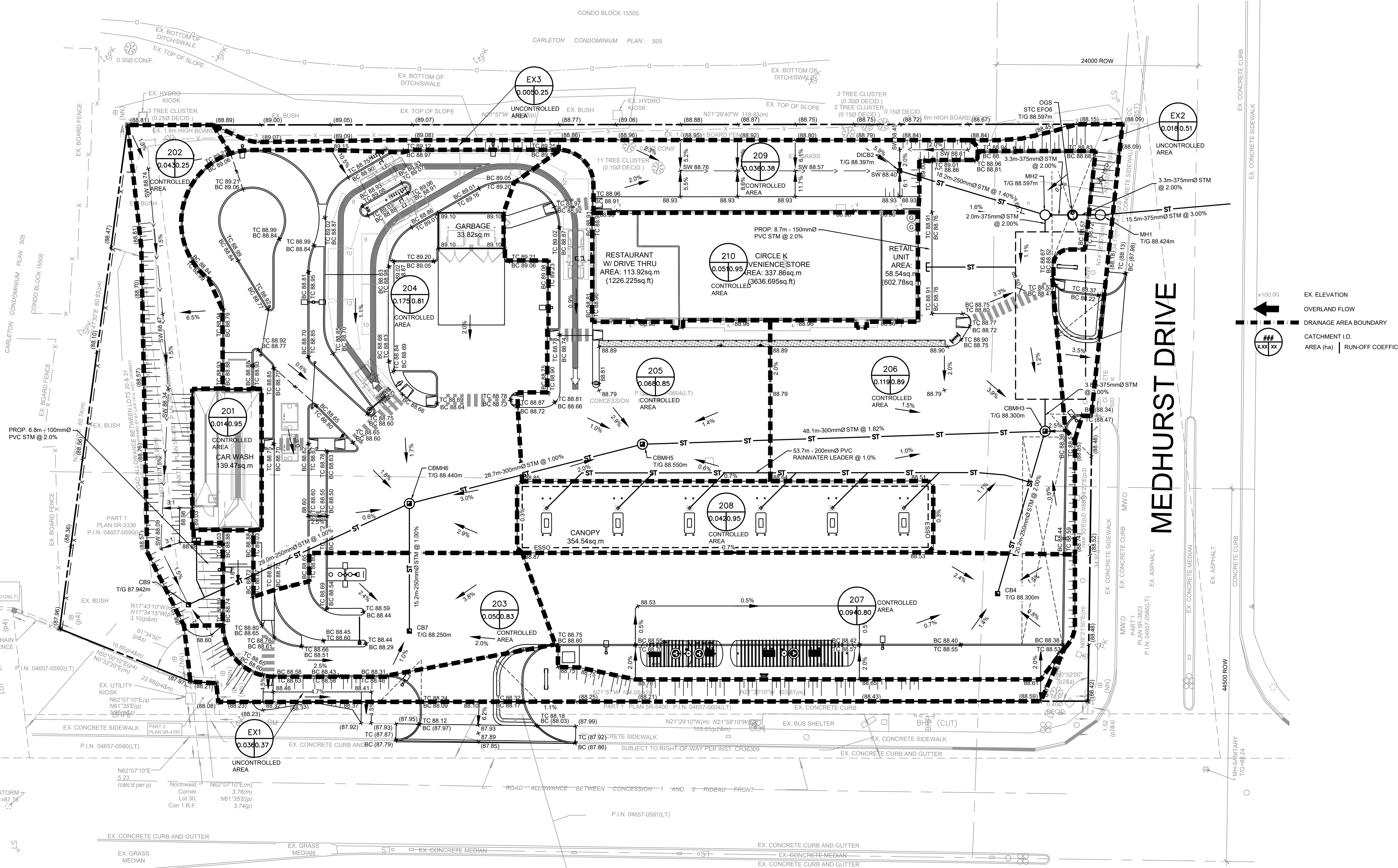
CIRCLE K

Location:
 1545 WOODROFFE AVE.
 OTTAWA, ON

Title:
POST-DEVELOPMENT DRAINAGE PLAN

Designed By: L.M.B.	Drawn By: L.M.B.	Checked By: J.S.
Scale: 1:250	Date: APRIL 2020	City Drawing No.:
Project No.: BRM00606364-B0	Drawing No.:	C04

CITY DWG. # 17094



CITY # 007-1221-0056