

**COPYRIGHT NOTICE**

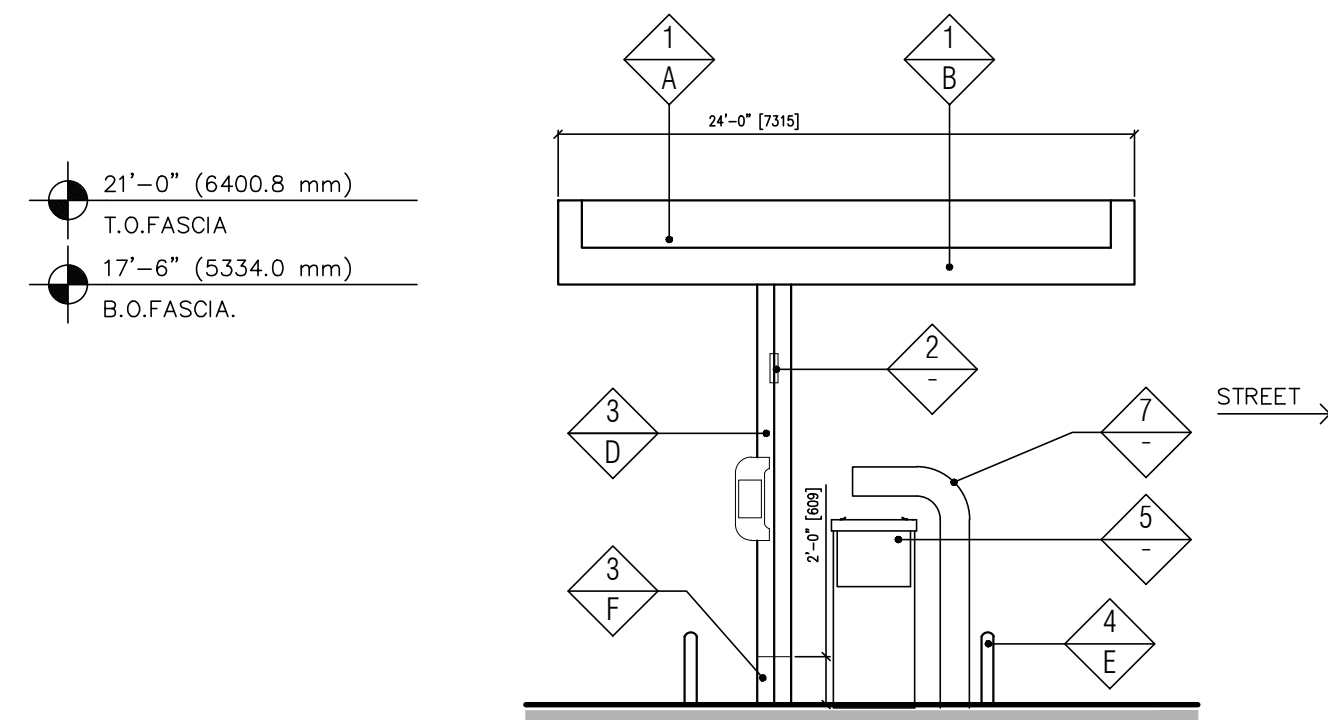
This drawing is the property of the above referenced Professional and is not to be used for any purpose other than the specific project and site named herein, and cannot be reproduced in any manner without the express written permission from the Professional.

09/24/21 ISSUED FOR SPA  
12/03/21 RE-ISSUED FOR SPA  
19/01/22 RE-ISSUED FOR SPA

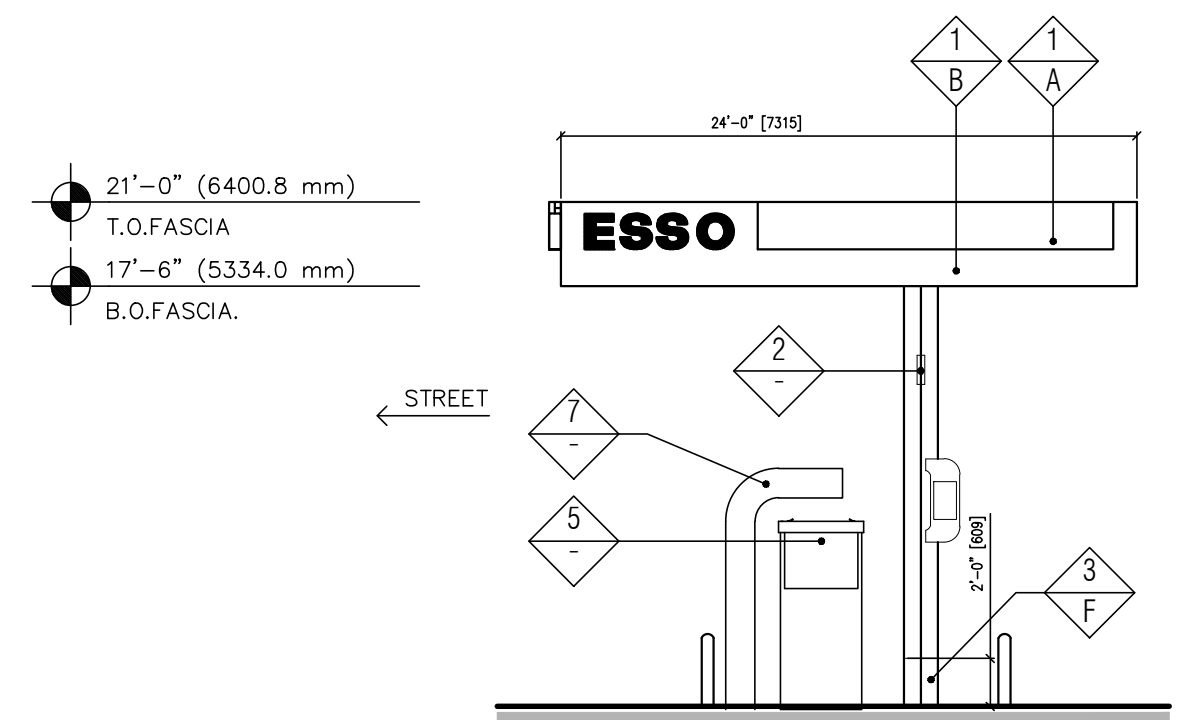
**FINISH SCHEDULE**

FINISH MATERIAL	
1	ACM PANEL "TEX-COTE"
2	COLUMN FLAGS BY SIGNAGE VENDOR, ESSO "SYNERGY" BRANDING
3	STEEL COLUMN WITH PAINT FINISH
4	6" Ø BOLLARD, 36" HIGH
5	FUEL PUMP
6	INTERNALLY ILLUMINATED SIGN UNDER SEPARATE PERMIT
7	ILLUMINATED WAVE SIGNAGE, ESSO "SYNERGY" BRANDING
FINISH COLOR	
A	ESSO RED
B	ESSO WHITE
C	NOT USED
D	RAL9016 SHELL WARM WHITE
E	PVC BOLLARD SLEEVE "DARK GRAY"
F	SHERWIN WILLIAMS - SW6236 - GRAYS HARBOR

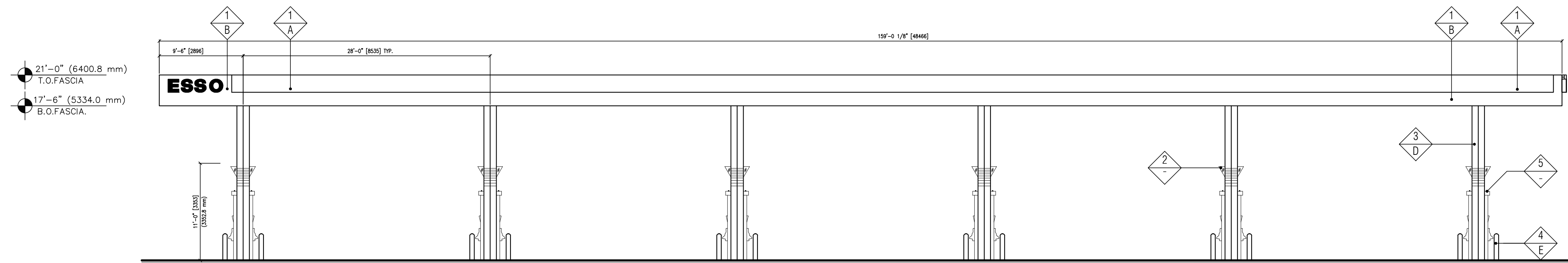
- NOTES:
1. THE FASCIA PANELS ARE PRE-FINISHED BY SIGNAGE VENDOR
  2. ALL SIGNS REQUIRE A SEPARATE SUBMITTAL
  3. ALL LIGHTING ON CANOPY TO BE FLUSH MOUNTED WITH FASCIA. SEE ELECTRICAL



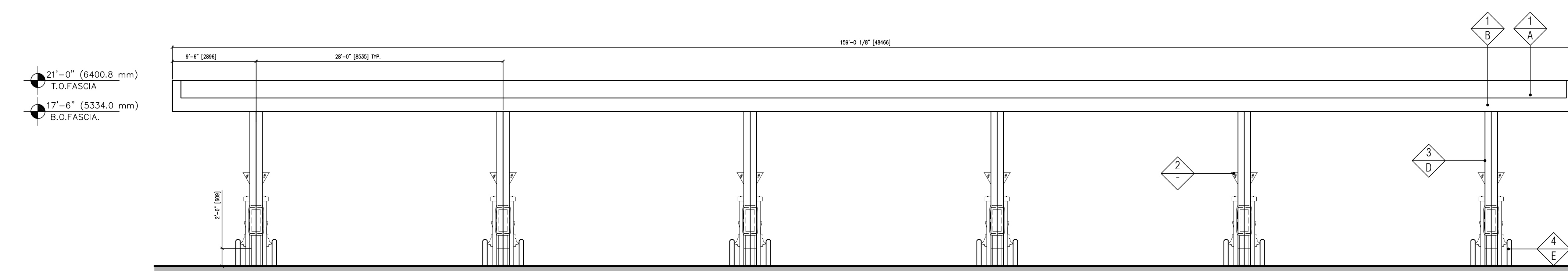
**1** "SIDE" (WEST) ELEVATION  
SCALE: 1/8" = 1'-0"



**2** "SIDE" (EAST) ELEVATION  
SCALE: 1/8" = 1'-0"



**3** "FRONT" (SOUTH) ELEVATION  
SCALE: 1/8" = 1'-0"



**4** "BACK" (NORTH) ELEVATION  
SCALE: 1/8" = 1'-0"

**PROFESSIONAL SEAL**

**FOR REVIEW**  
NOT FOR CONSTRUCTION

**PROFESSIONAL IN CHARGE**

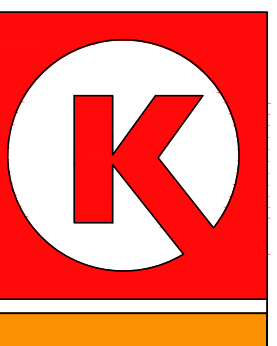
S. CHERIAN  
**PROJECT MANAGER**  
S. LAWRENCE  
**QUALITY CONTROL**  
O. KARIMZODA  
**DRAWN BY**  
O. KARIMZODA

**PROJECT NAME**

**CIRCLE K STORES INC.**  
**R&R No. 52287**

**NEPEAN ONTARIO**

**1545 WOODROFFE AVENUE**  
**NEPEAN, ON, CANADA**  
**K2G 1W2**



**CIRCLE K STORES INC.**

**PROJECT NUMBER**

BE20207036

**SHEET TITLE**

**ARCHITECTURAL FUEL PUMP CANOPY ELEVATIONS**

**SHEET NUMBER**

**CA-2**