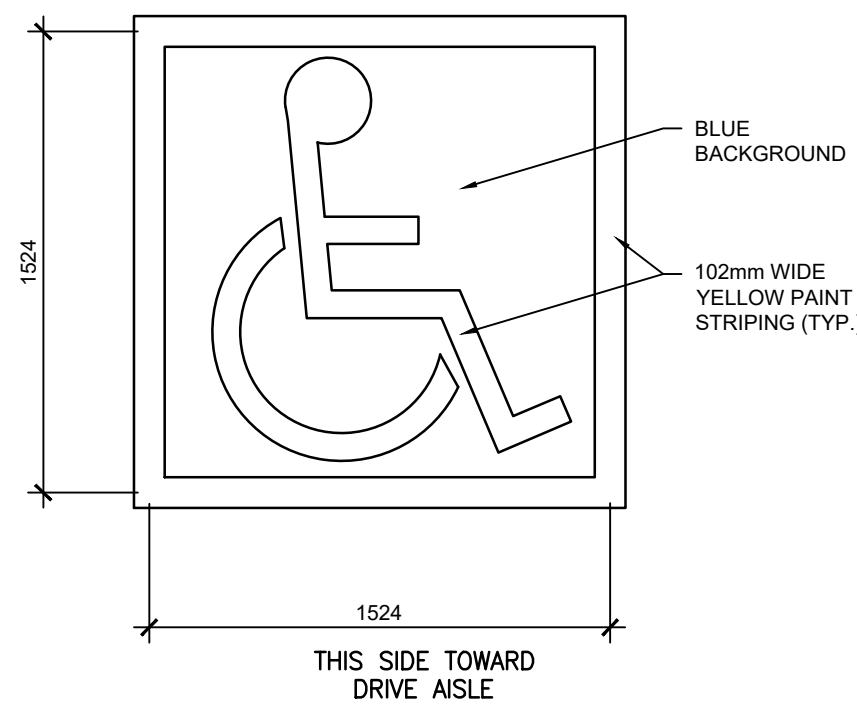
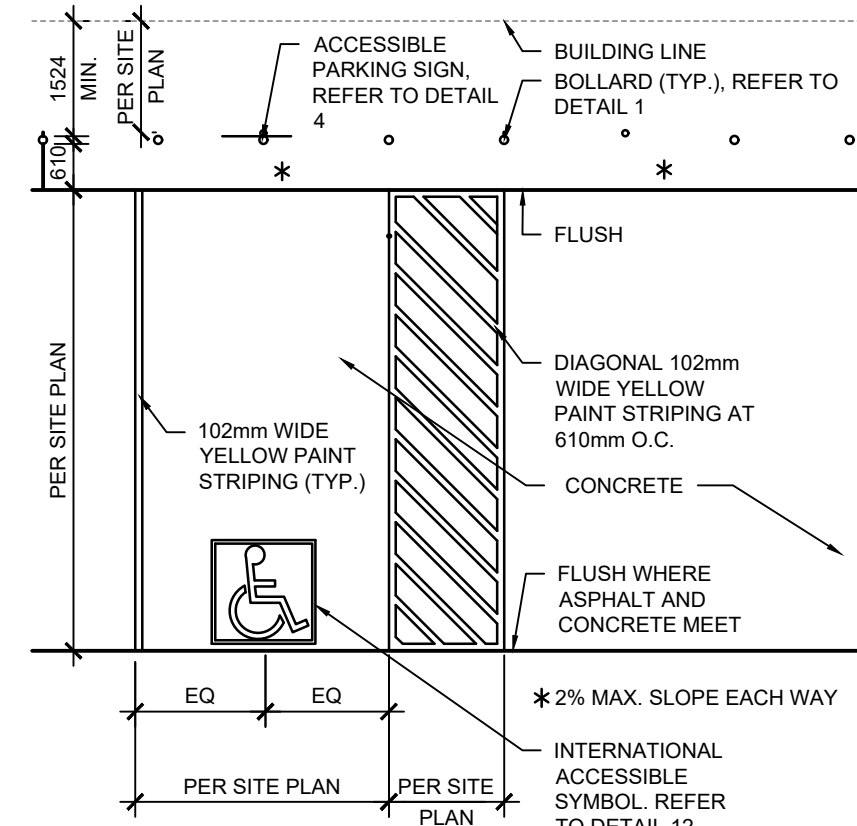


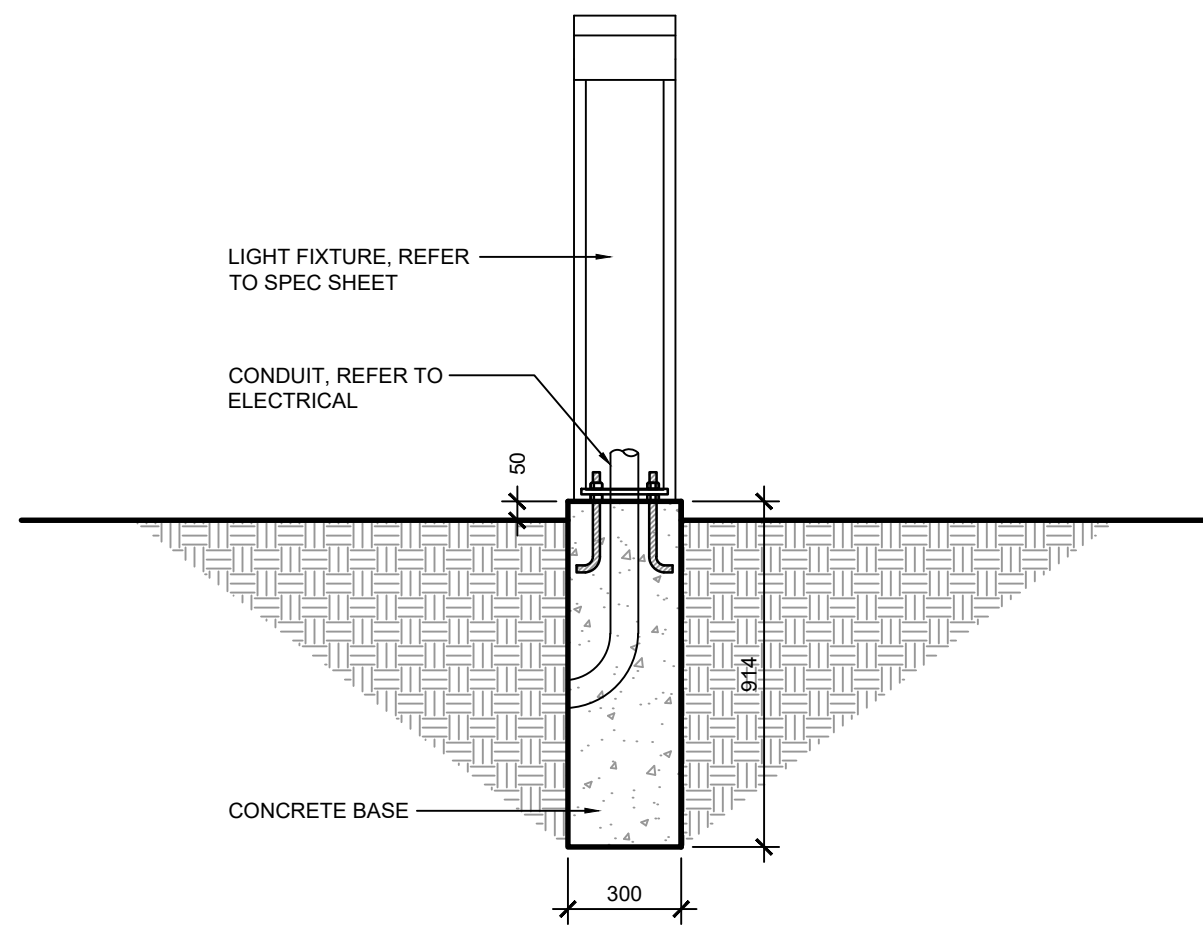
GENERAL NOTES:
 1. REFER TO SITE PLAN FOR CORRECT ORIENTATION AND LAYOUT. IN SOME CASES MINIMUM DIMENSIONS ARE NOTED BUT SITE PLAN DIMENSIONS TAKE PRECEDENCE.



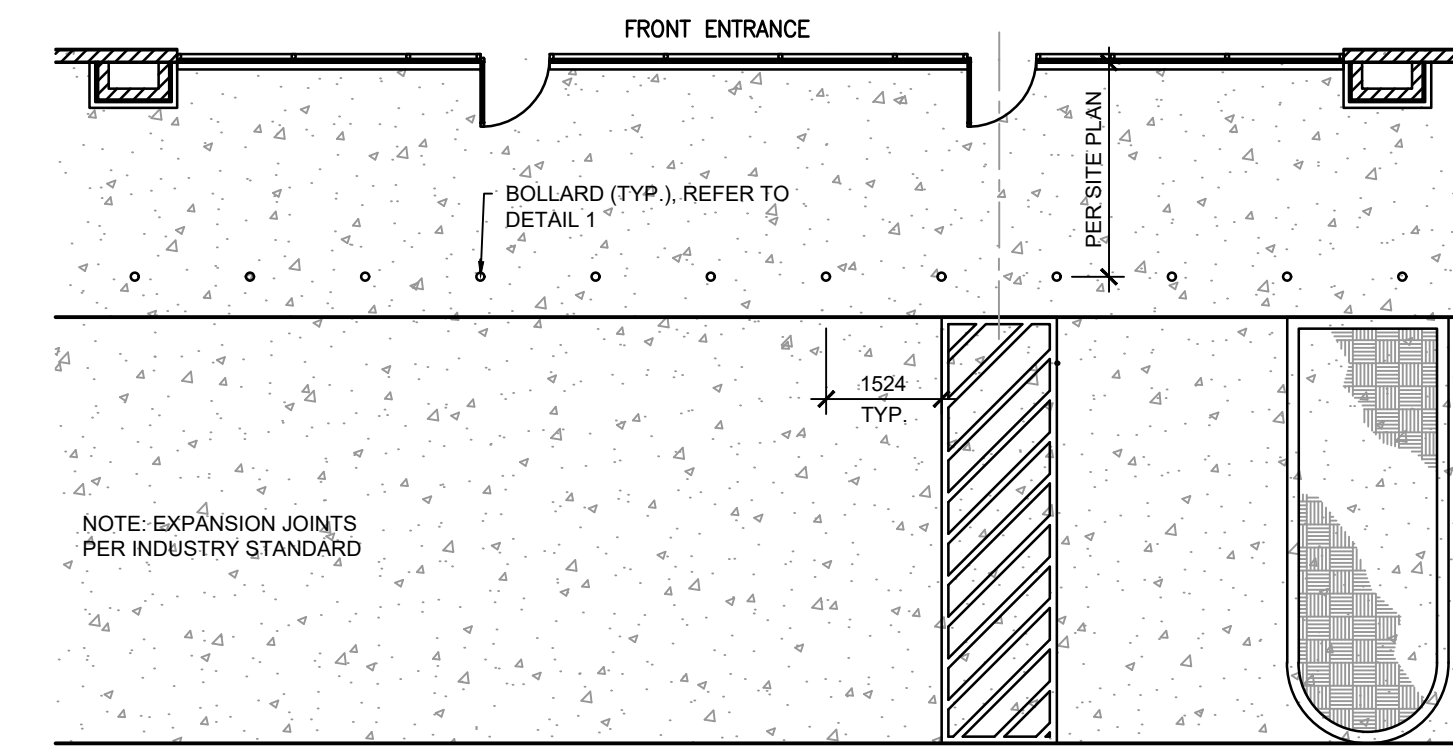
12 ACCESSIBLE PARKING SYMBOL
 SCALE 1:25



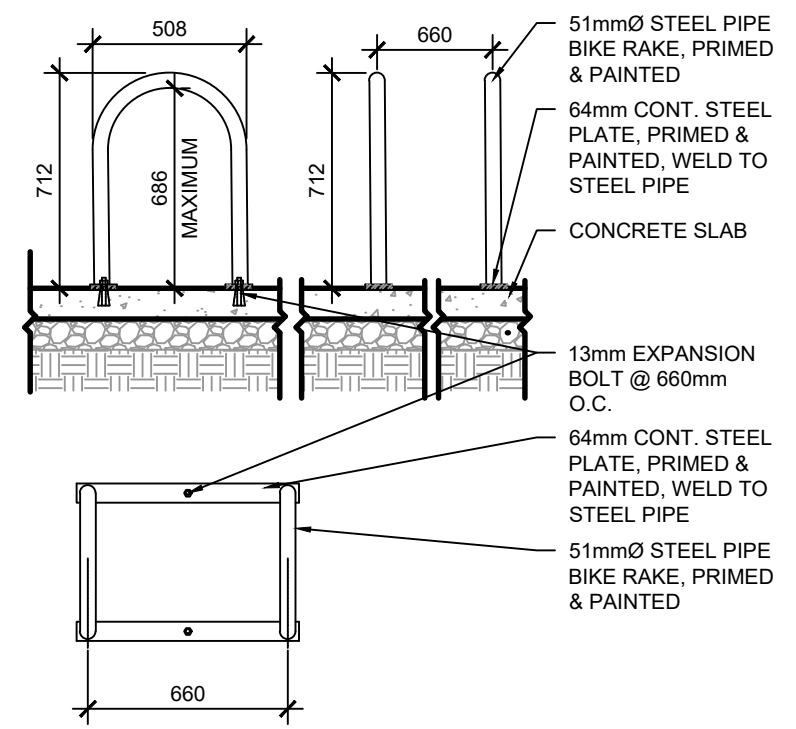
9 ACCESSIBLE PARKING STALL
 SCALE 1:100



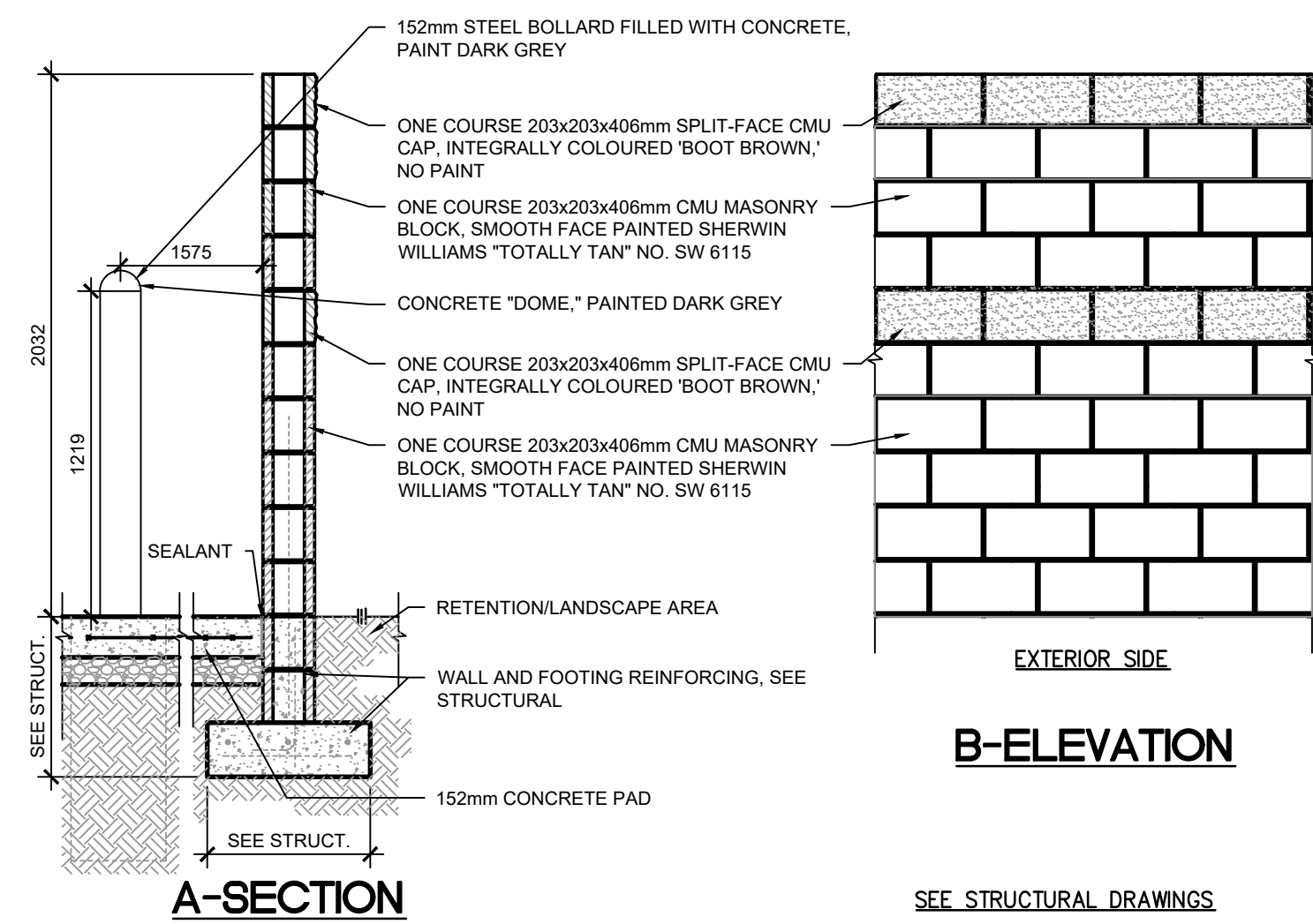
13 ILLUMINATED BOLLARD
 SCALE 1:20



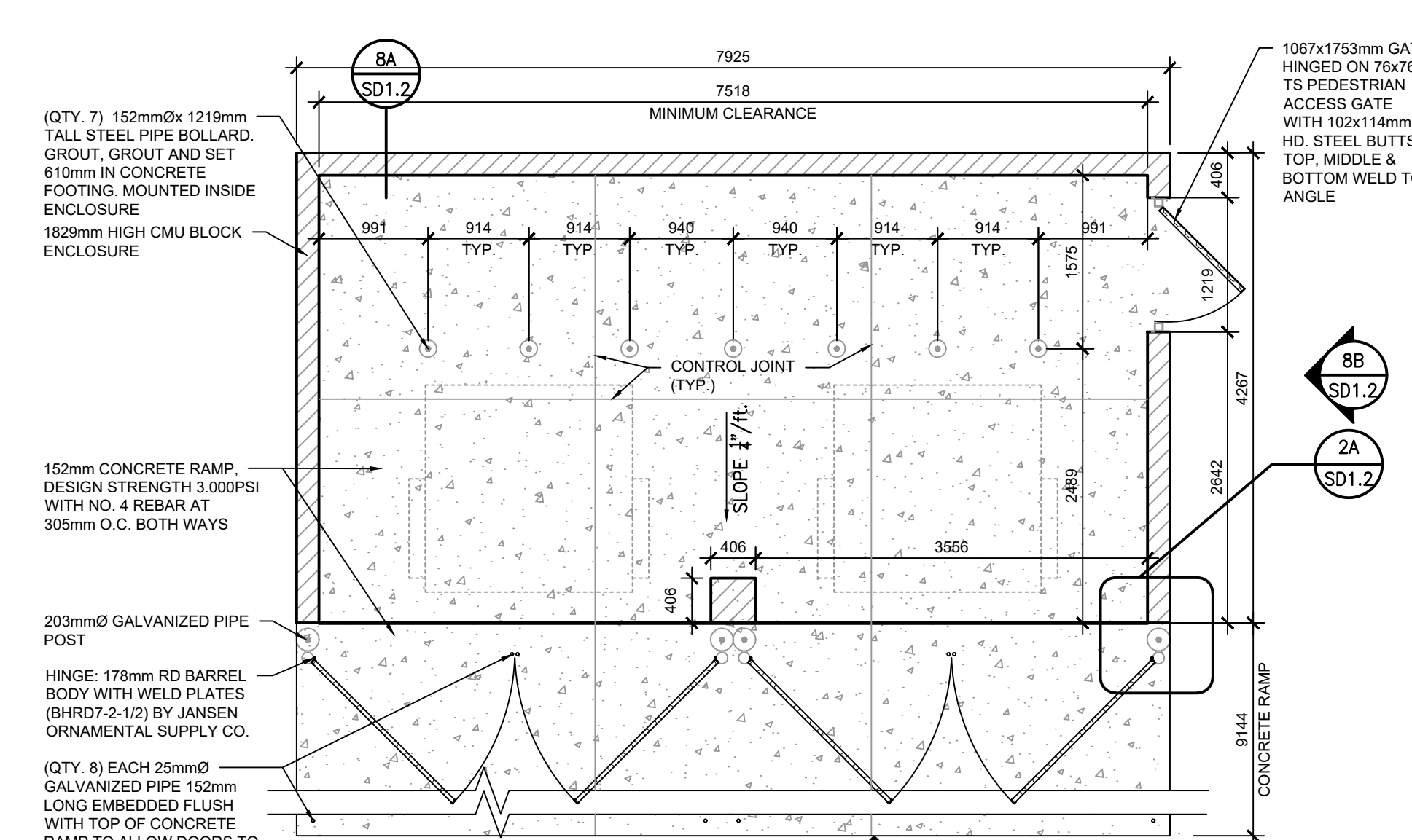
3 TYP. FRONT BOLLARD
 SCALE 1:100



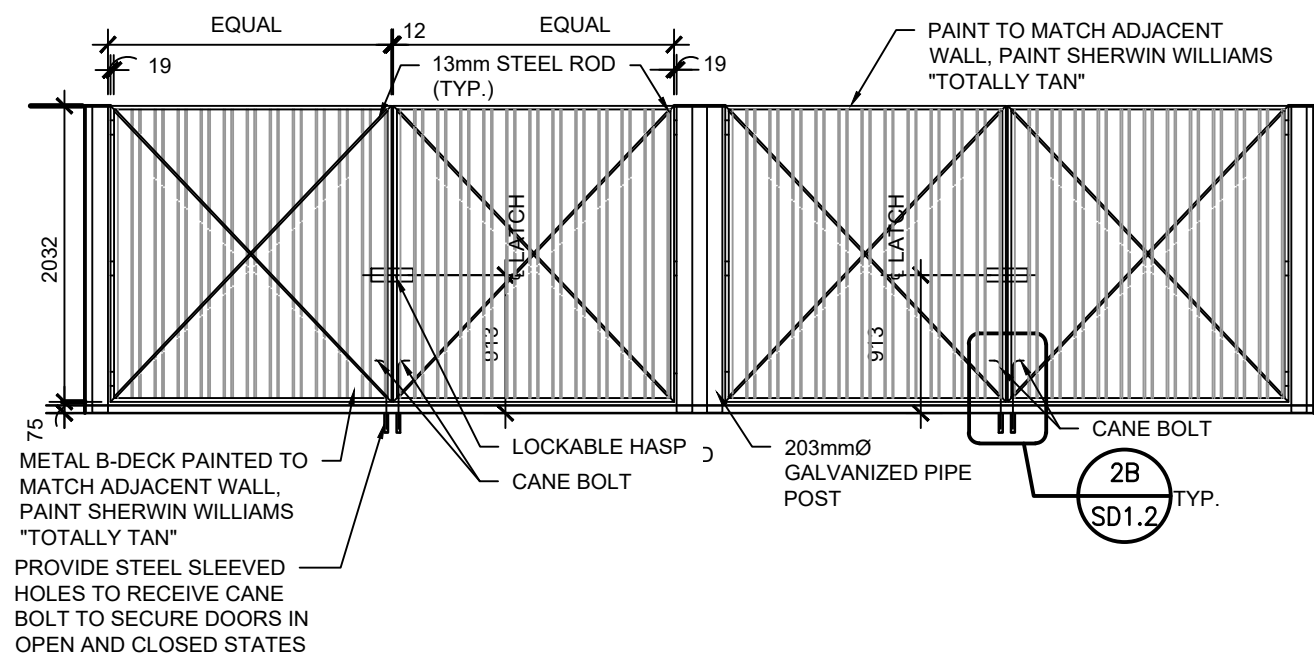
11 BIKE RACK (TYP.)
 SCALE 1:25



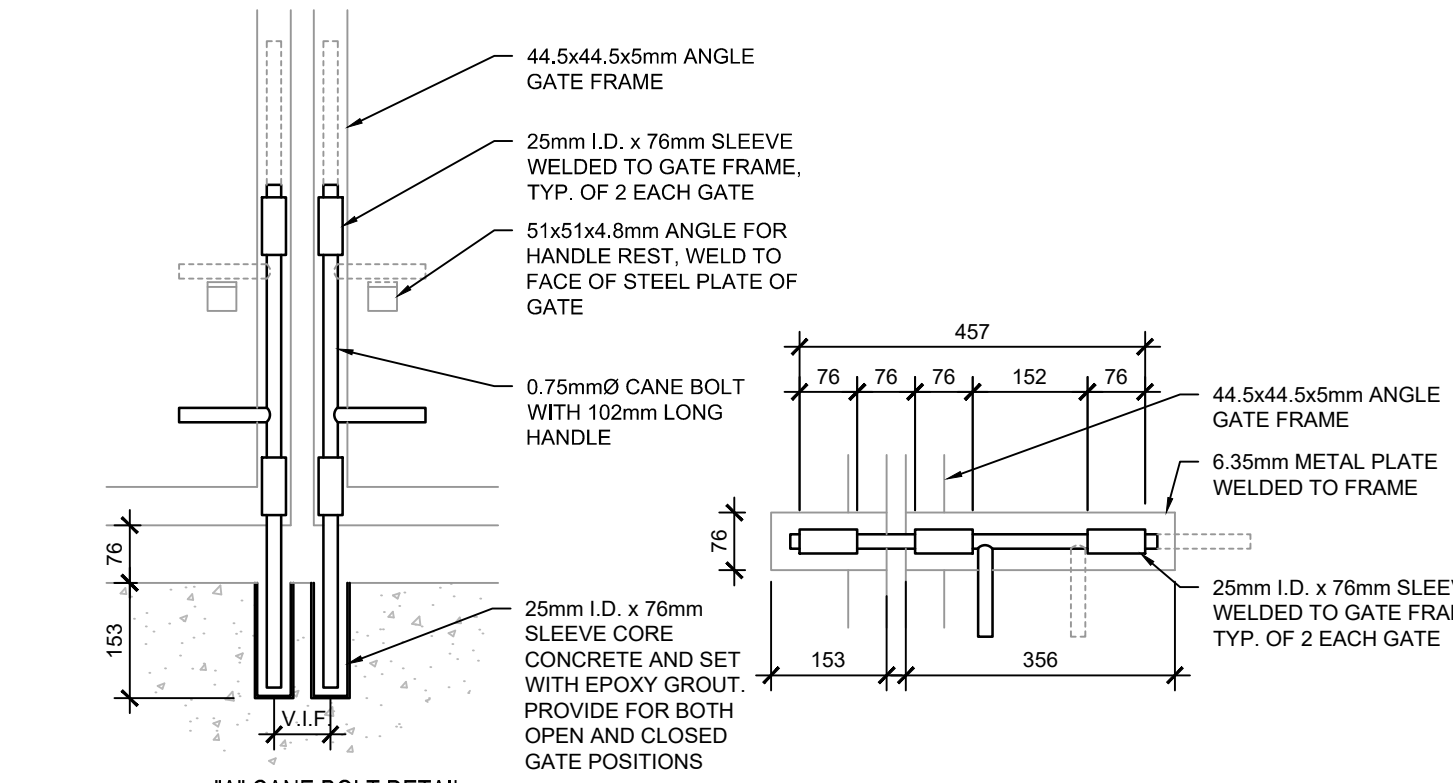
8 1829 TRASH ENCLOSURE
 SCALE 1:25



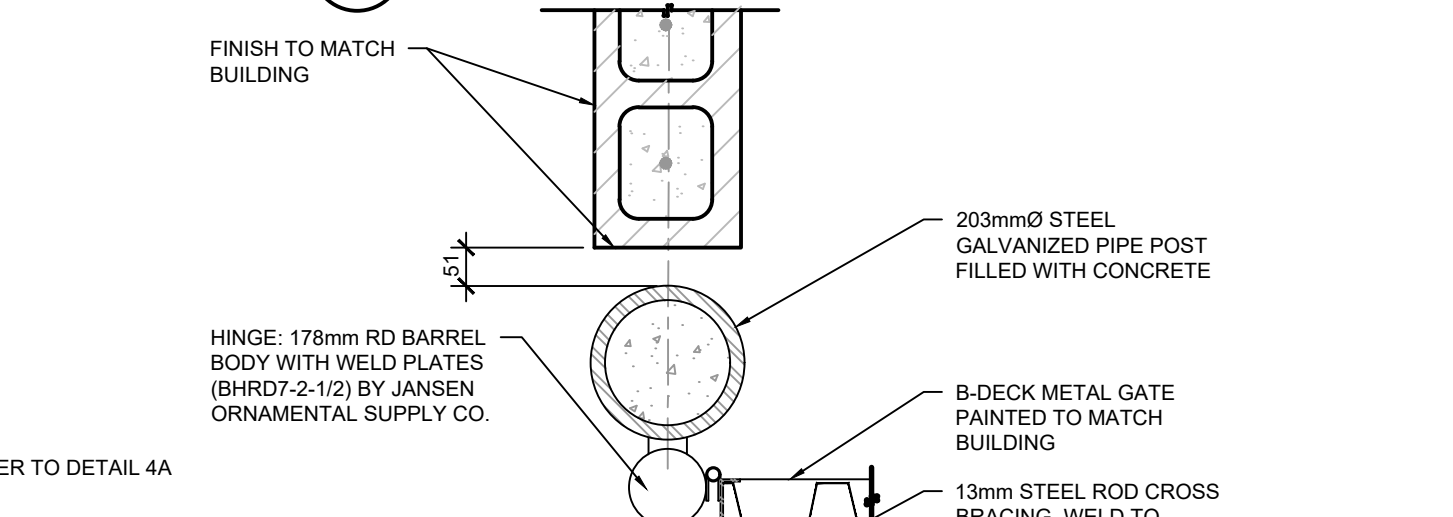
6 TRASH ENCLOSURE PLAN
 SCALE 1:50



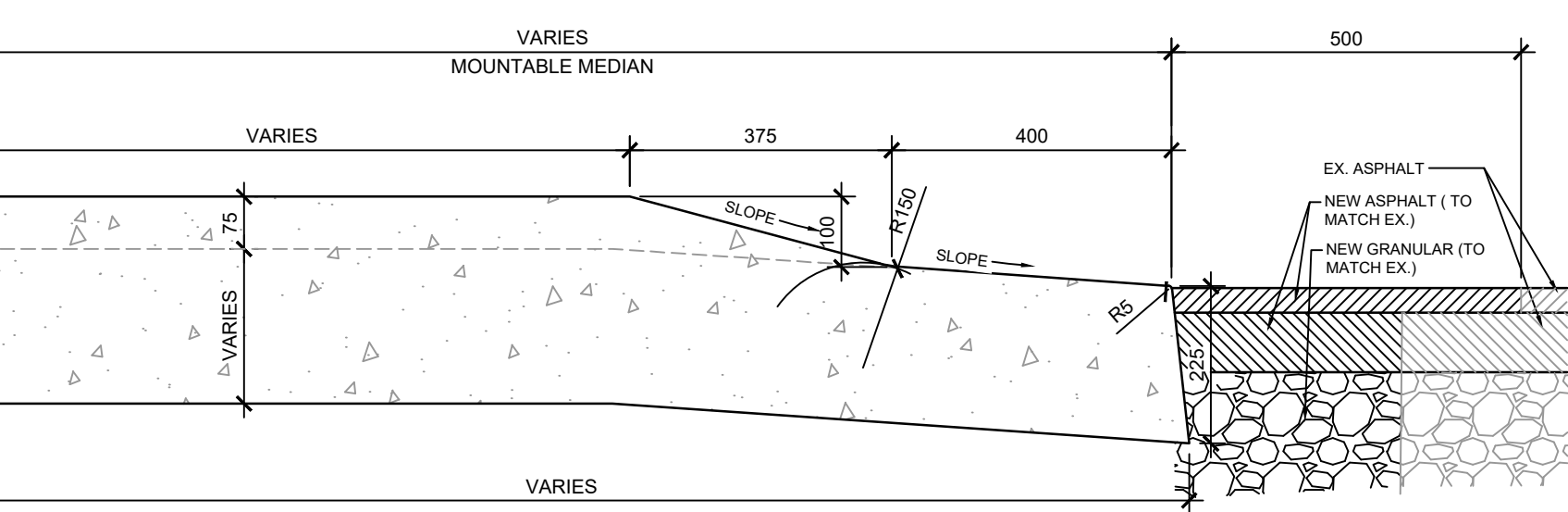
7 TRASH ENCLOSURE GATE ELEVATION
 SCALE 1:25



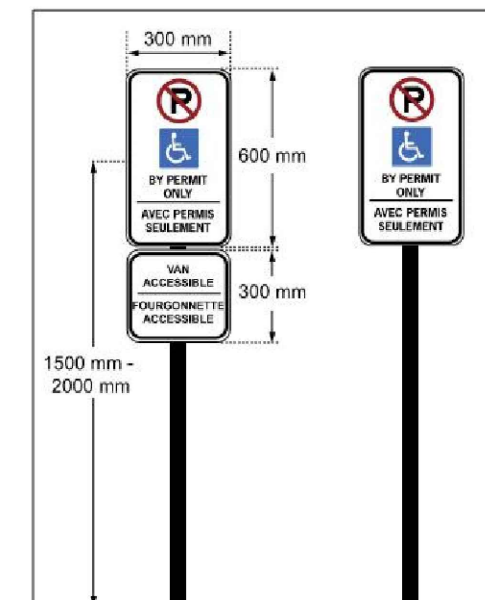
2A 'A' CANE BOLT DETAIL
 SCALE 1:10



2B 'B' GATE LATCH DETAIL
 SCALE 1:10

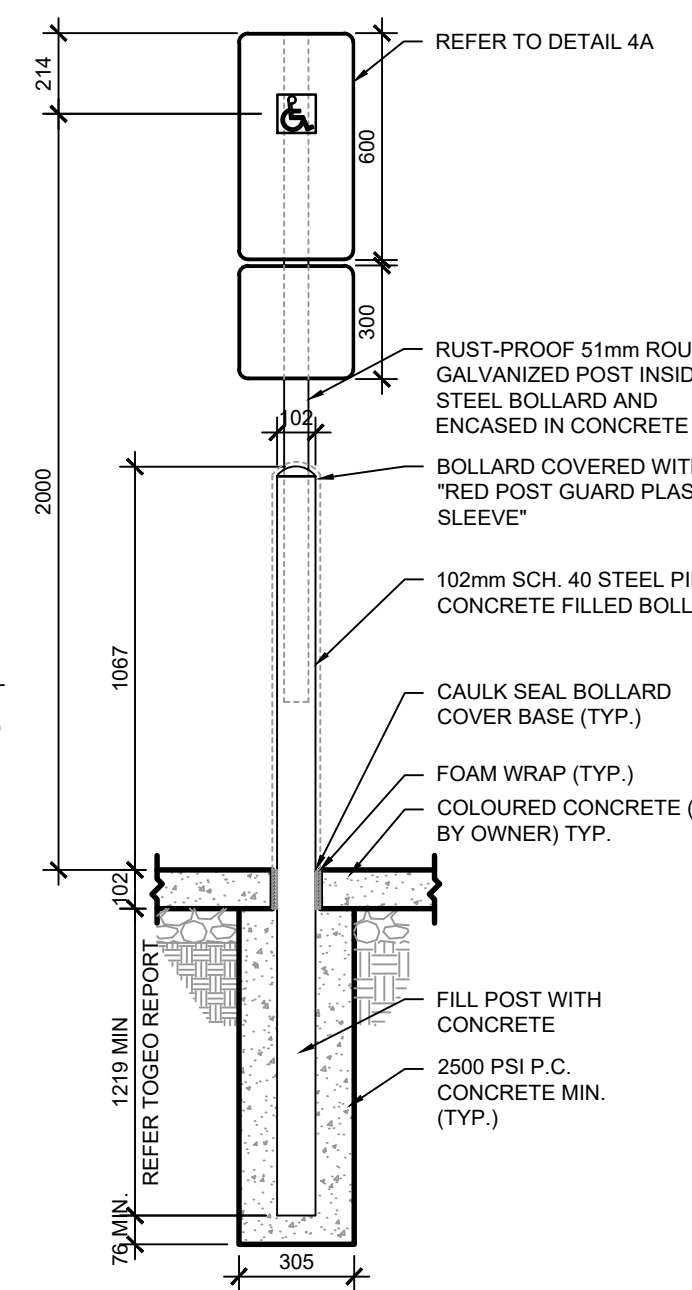


A MEDIAN SECTION
 SUPER-ELEVATED OPSD 600 030
 SCALE 1:100

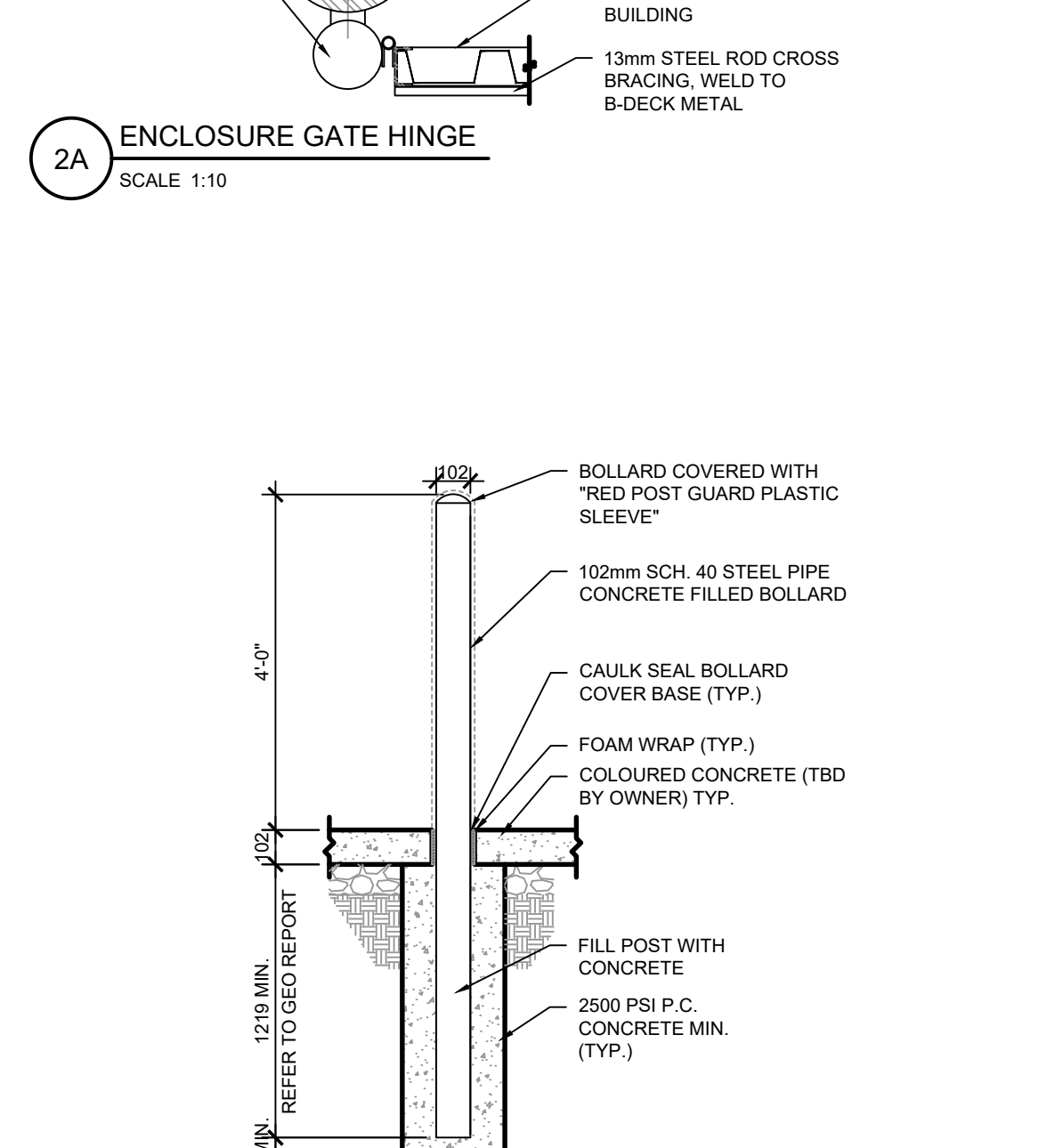


4A ACCESSIBLE SIGN
 SCALE 1:20

NOTES:
 SIGNS SHALL BE MOUNTED TO POST WITH GALVANIZED OR CADMIUM PLATE 8mm Ø STEEL BOLTS, NUTS AND WASHERS. CONTRACTOR SHALL SUPPLY AND INSTALL 8mm NYLON WASHERS BETWEEN BOLT HEADS AND SIGN FACE TO PROTECT FINISH



4 ACCESSIBLE SIGN
 SCALE 1:20



1 BOLLARD
 SCALE 1:20

Allison Hamlin
ALLISON HAMLIN
 MANAGER (A), DEVELOPMENT REVIEW WEST
 PLANNING, REAL ESTATE & ECONOMIC DEVELOPMENT
 DEPARTMENT, CITY OF OTTAWA

APPROVED
 By Allison Hamlin at 12:05 pm, Aug 19, 2022

No.	REVISIONS	Date	By	App.
E	ISSUED FOR BUILDING PERMIT	JUL 13 2022	E.D.	C.F.
D	ISSUED FOR CLIENT REVIEW	JUN 17 2022	J.B.	C.F.
C	ISSUED FOR SPA	MAR 14 2022	J.B.	C.F.
B	REISSUED FOR SPA	SEP. 25 2021	C.F.	C.F.
A	ISSUED FOR SPA	APR 27 2021	C.F.	C.F.



exp Services Inc.
 1-1-905.793.0800 | 1-1.905.793.0641
 1595 Clark Boulevard
 Brampton, ON L6T 4V1
 Canada
 www.exp.com



- BUILDINGS • EARTH & ENVIRONMENT • ENERGY •
- INDUSTRIAL • INFRASTRUCTURE • SUSTAINABILITY •



Location:
1545 WOODROFFE AVE.
OTTAWA, ON

Title:
SITE DETAILS

Designed By:	Drawn By: T.M.	Checked By: C.F.
Scale: AS NOTED	Date: MARCH 2021	City Drawing No.:
Project No.: BRM00606364-B0	Drawing No.:	SD1.2

CITY # INT-17-21-0086