

KEY NOTES

- STEEL COLUMN WRAP WITH BREAK METAL
- LINE OF CANOPY / SOFFIT
- DARK BRONZE ANODIZED WINDOW FRAMING W/ CLEAR GLASS WINDOW SYSTEM
- INTERNALLY ILLUMINATED SIGN WITH BLOCKING (UNDER SEPARATE PERMIT)
- DARK BRONZE ANODIZED DOOR W/ CLEAR GLASS STOREFRONT SYSTEM
- SERVICE DOOR, PAINT TO MATCH SURROUNDING WALL
- PRE-FINISHED METAL COPING
- 3/8" THK. X 17/8" H X 71/8" WALL PANEL FIBER CEMENT
- WALL MOUNTED LIGHT FIXTURE, COLOR: BLACK. SEE ELECTRICAL PLAN
- NOT USED.
- ROOF LINE AND HVAC UNITS
- 1-1/2" STAINLESS STEEL CORNER EDGE, TYP. TO ALL CORNERS
- DOWNSPOUT, RE: PLUMBING PLAN
- ADDRESSING LOCATION: 8" TALL INCH BLACK NUMBERS. FINAL AREA LOCATION TO BE DETERMINED BY FIRE DEPARTMENT.
- 1 3/8" THK. X 6" HIGH FIBER CEMENT WAINSCOT
- 1-1/2" HIGH FIBER CEMENT CAP INSTALL PER MFR. SPECS.
- NICHHA ESSENTIAL "OVERHANG" FLASHING
- PARAPET WALL BEYOND
- NOT USED.
- NOT USED.
- NOT USED
- EMERGENCY FUEL SHUT-OFF SWITCH, REFER TO SHEET F1.0 - FUEL PIPING FLOOR PLAN
- INSULATED METAL DOOR
- NICHHA ESSENTIAL "STARTER" FLASHING
- NOT USED.
- EXTERIOR FINISH TO EXTEND ABOVE SIDEWALK/GRADE, SEE DET. 8/AB.1 & 11/AB.1
- LEADER BOX. SEE PLUMBING DWGS.
- EMERGENCY OVERFLOW SCUPPER. SEE PLUMBING DWGS.
- NOT USED.
- DRIVE THRU WINDOW AND BOLLARD BY OTHERS.

FINISH SCHEDULE

- A - ***NICHHA TUFF BLOCK - COLOR TO MATCH #SW 6095 TOASTY
 - B - ***NICHHA TUFF BLOCK - COLOR TO MATCH #SW 6115 TOTALLY TAN
 - C - 1" INSULATED, DOUBLE PANED CLEAR GLASS
 - D - *SHERWIN WILLIAMS #SW 4081 - **SAFETY RED
 - E - *SHERWIN WILLIAMS #SW 7005 - CIRCLE K WHITE
 - F - ***NICHHA CHISELED SILL TAN
 - G - ***NICHHA LEDGESTONE BLUFF
 - H - *SHERWIN WILLIAMS #SW 6090 - FIRESTONE MANSARD BROWN SR (USE FOR PRE-FINISHED METAL COPING)
 - I - CIRCLE K ORANGE #PMS 144
- * USE SHERWIN WILLIAMS MANUFACTURER ONLY
 ** COLOR TO BE PRE-ORDERED TO ENSURE AVAILABILITY AT TIME OF CONSTRUCTION
 *** COORDINATE WITH OWNER'S REP

PROFESSIONAL SEAL

FOR REVIEW
NOT FOR CONSTRUCTION

PROFESSIONAL IN CHARGE

S. CHERIAN
PROJECT MANAGER
 S. LAWRENCE
QUALITY CONTROL
 O. KARIMZODA
DRAWN BY
 O. KARIMZODA

PROJECT NAME

CIRCLE K STORES INC.
R&R No. 52287

NEPEAN ONTARIO

1545 WOODROFFE AVENUE
NEPEAN, ON, CANADA
K2G 1W2



CIRCLE K STORES INC.

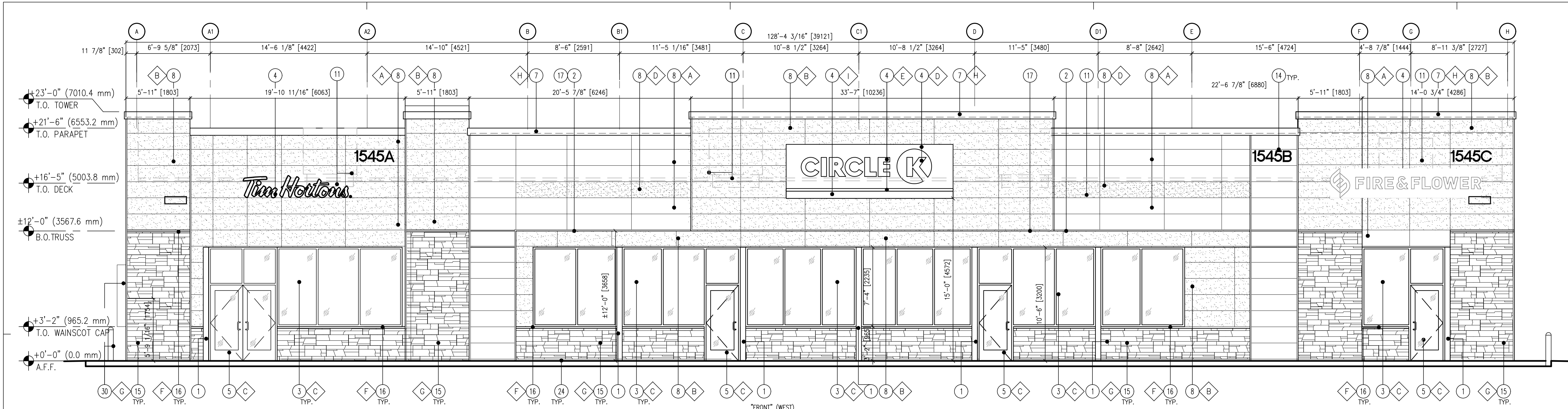
PROJECT NUMBER
 BE20207036

SHEET TITLE
ARCHITECTURAL
C-STORE
AND FIRE & FLOWER
ELEVATIONS

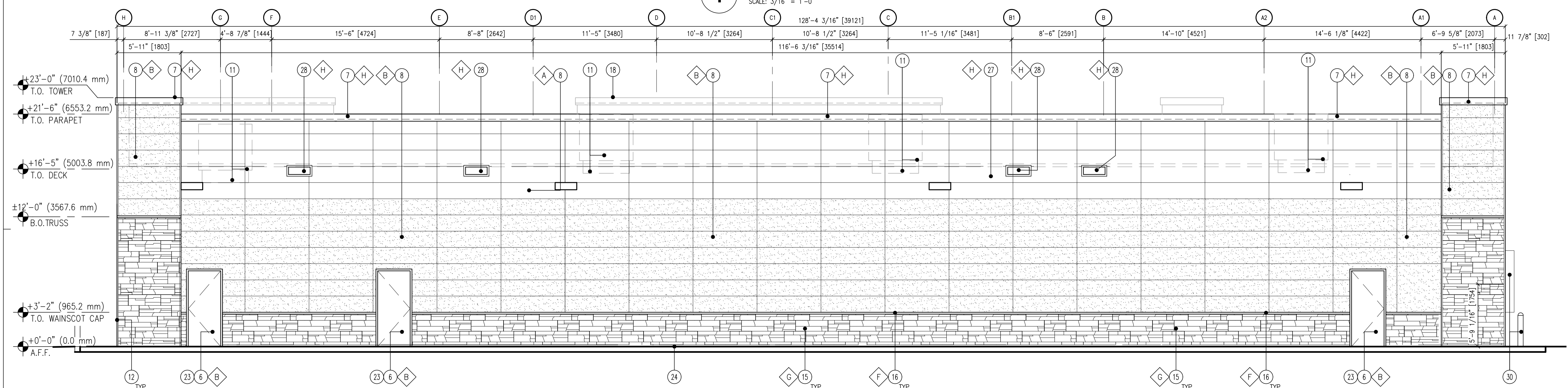
SHEET NUMBER

A2.1

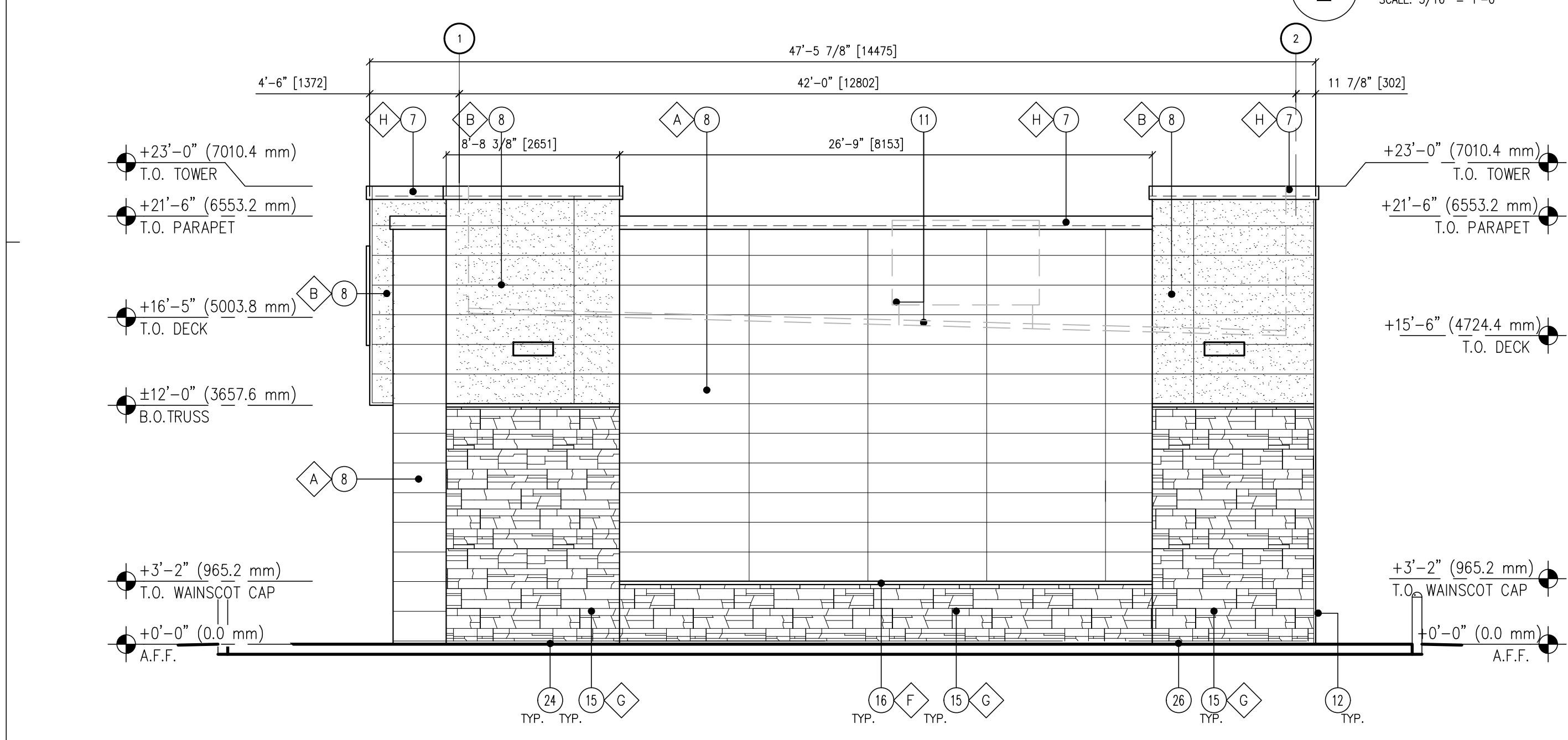
D07-12-21-0056



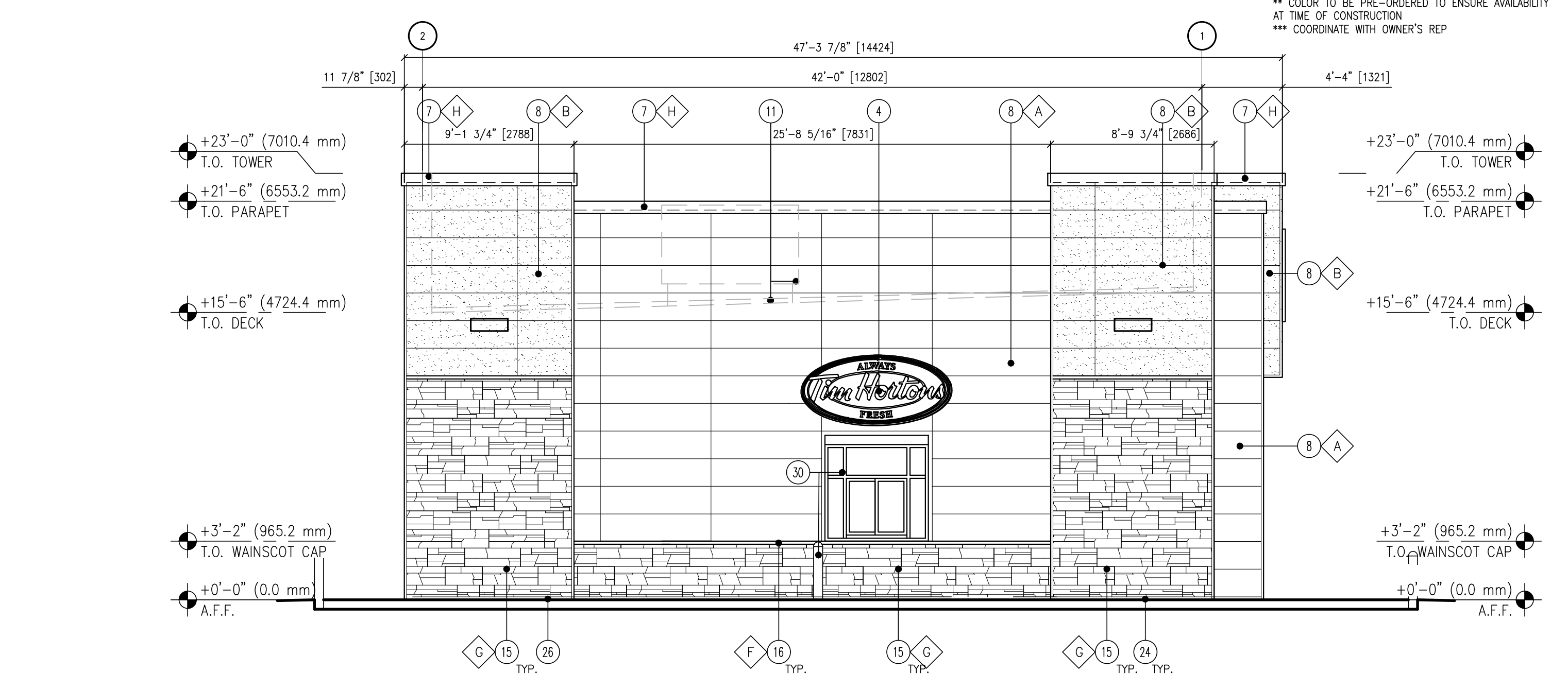
1 FRONT (WEST) ELEVATION
 SCALE: 3/16" = 1'-0"



2 BACK (EAST) ELEVATION
 SCALE: 3/16" = 1'-0"



3 SIDE (SOUTH) ELEVATION
 SCALE: 3/16" = 1'-0"



4 SIDE (NORTH) ELEVATION
 SCALE: 3/16" = 1'-0"