



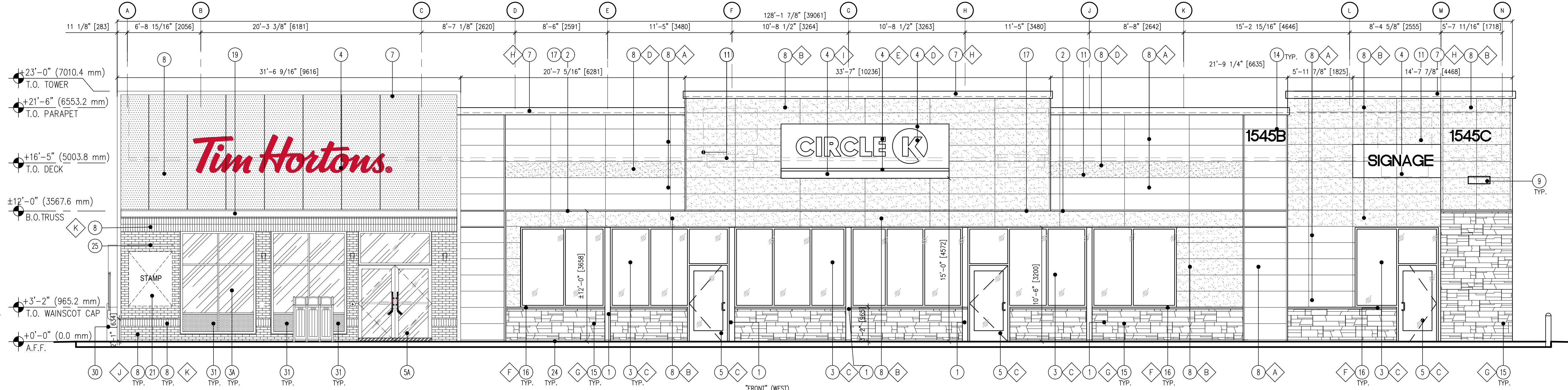
**KEY NOTES**

- STEEL COLUMN WRAP WITH BREAK METAL
- LINE OF CANOPY / SOFFIT
- DARK BRONZE ANODIZED WINDOW FRAMING W/ CLEAR GLASS WINDOW SYSTEM. 3A - ANODIZED ALUMINUM FRAMES
- INTERNALLY ILLUMINATED SIGN WITH BLOCKING (UNDER SEPARATE PERMIT)
- DARK BRONZE ANODIZED DOOR W/ CLEAR GLASS STOREFRONT SYSTEM. 5A - ANODIZED ALUMINUM FRAMES.
- SERVICE DOOR. PAINT TO MATCH SURROUNDING WALL
- PRE-FINISHED METAL COPING
- 8" THK. X 17 1/8" H X 71 1/8" WALL PANEL FIBER CEMENT
- WALL MOUNTED LIGHT FIXTURE. COLOR: BLACK. SEE ELECTRICAL PLAN
- NOT USED.
- ROOF LINE AND HVAC UNITS
- 1-1/2" STAINLESS STEEL CORNER EDGE, TYP. TO ALL CORNERS
- DOWNSPOUT, RE: PLUMBING PLAN
- ADDRESSING LOCATION: 8" TALL INCH BLACK NUMBERS. FINAL AREA LOCATION TO BE DETERMINED BY FIRE DEPARTMENT.
- 1 3/8" THK. X 6" HIGH FIBER CEMENT WAINSCOT
- 1-1/2" HIGH FIBER CEMENT CAP INSTALL PER MFR. SPECS.
- NICHHA ESSENTIAL "OVERHANG" FLASHING
- PARAPET WALL BEYOND
- GC TO INSTALL C-CHANNEL c/w INTEGRATED PERIMETER LIGHTING.
- EXTERIOR POP FRAME. SUPPLIED BY TDL GROUP AND INSTALLED BY G.C.
- APPROXIMATE LOCATION OF PROVINCE STAMP BY SIGN COMPANY.
- EMERGENCY FUEL SHUT-OFF SWITCH, REFER TO SHEET F1.0 - FUEL PIPING FLOOR PLAN
- INSULATED METAL DOOR
- NICHHA ESSENTIAL "STARTER" FLASHING
- EXTERIOR LED SIGN LIGHT, REFER TO ELECTRICAL DRAWINGS.
- EXTERIOR FINISH TO EXTEND ABOVE SIDEWALK/GRADE, SEE DET. 8/A8.1 & 11/A8.1
- LEADER BOX. SEE PLUMBING DWGS.
- EMERGENCY OVERFLOW SCUPPER. SEE PLUMBING DWGS.
- WALL PACK, REFER TO ELECTRICAL DRAWINGS.
- DRIVE-THRU WINDOW W/ INSULATED PANEL.
- INSULATED METAL PANEL.
- WALL SCIENCE, REFER TO ELECTRICAL DRAWINGS.

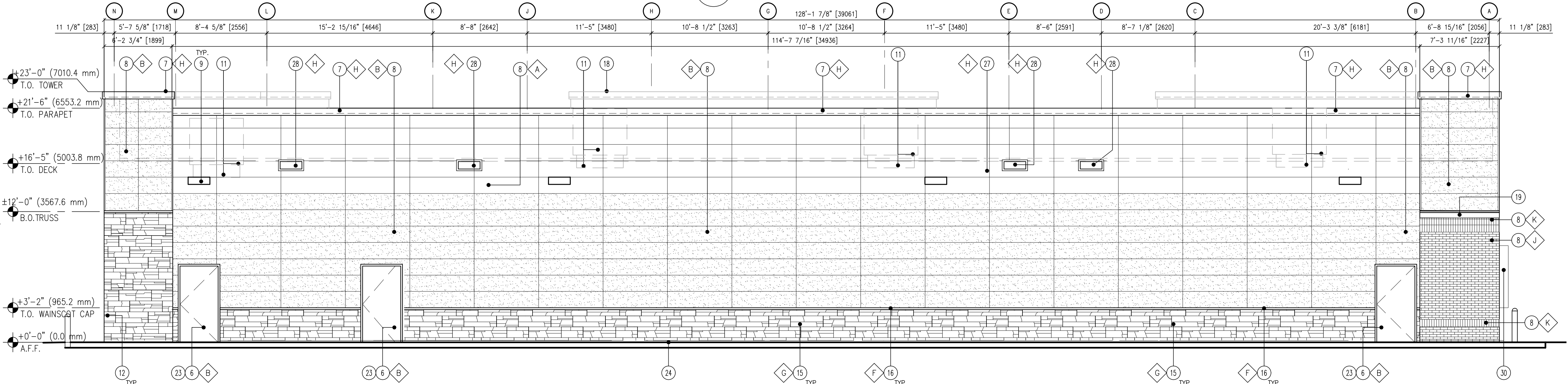
**FINISH SCHEDULE**

- A - \*\*\*NICHHA TUFF BLOCK - COLOR TO MATCH #SW 6095 TOASTY
- B - \*\*\*NICHHA TUFF BLOCK - COLOR TO MATCH #SW 6115 TOTALLY TAN
- C - 1" INSULATED, DOUBLE PANED CLEAR GLASS
- D - \*SHERWIN WILLIAMS #SW 4081 - \*\*SAFETY RED
- E - \*SHERWIN WILLIAMS #SW 7005 - CIRCLE K WHITE
- F - \*\*\*NICHHA CHISELED SILL TAN
- G - \*\*\*NICHHA LEDGESTONE BLUFF
- H - \*SHERWIN WILLIAMS #SW 6090 - FIRESTONE MANSARD BROWN SR (USE FOR PRE-FINISHED METAL COPING)
- I - CIRCLE K ORANGE #PMS 144
- J - \*\*\*NICHHA BRICK SERIES, VINTAGEBRICK ALEXANDRIA BUFF
- K - \*\*\*NICHHA BRICK SERIES, VINTAGEBRICK WHITE WASH

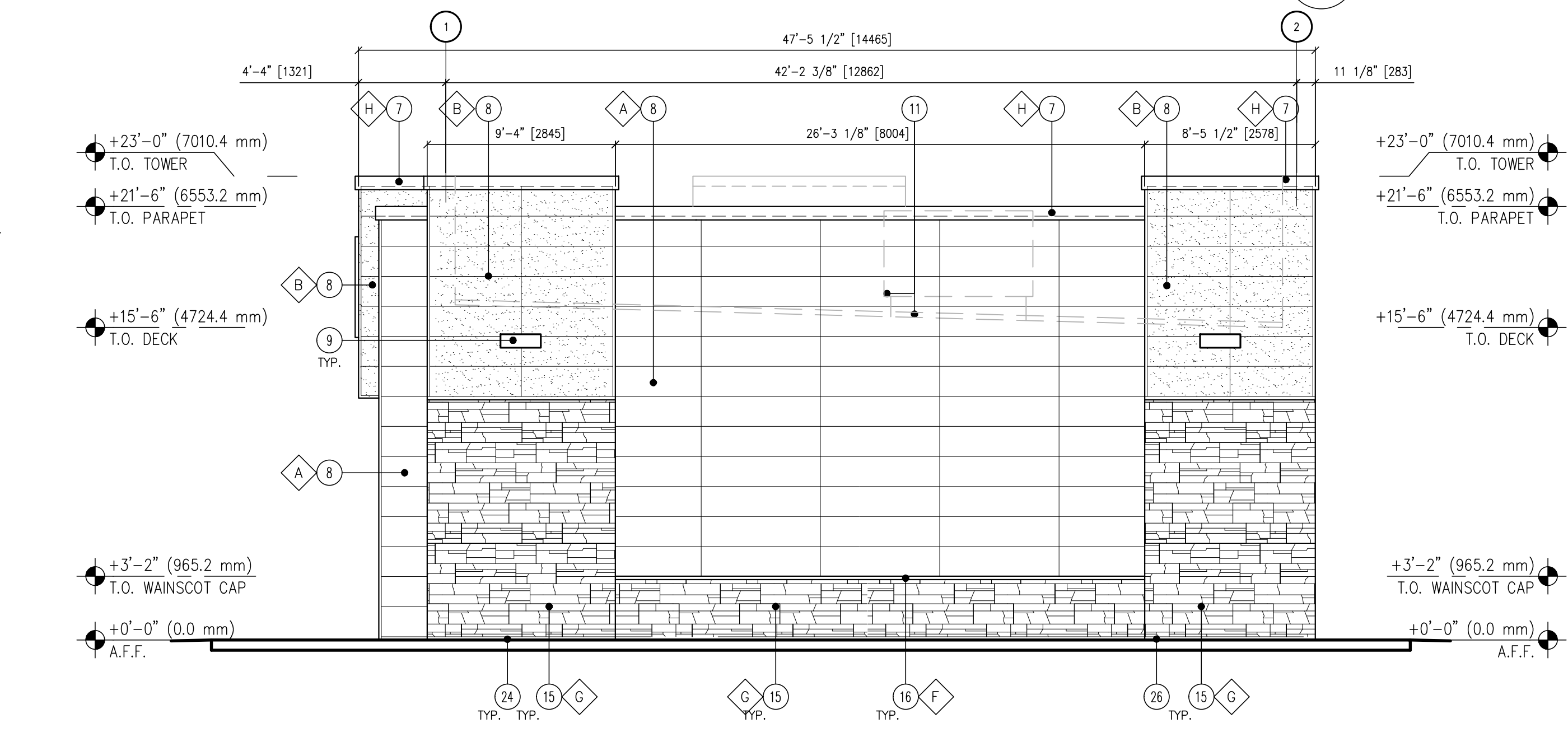
\* USE SHERWIN WILLIAMS MANUFACTURER ONLY  
\*\* COLOR TO BE PRE-ORDERED TO ENSURE AVAILABILITY AT TIME OF CONSTRUCTION  
\*\*\* COORDINATE WITH OWNER'S REP



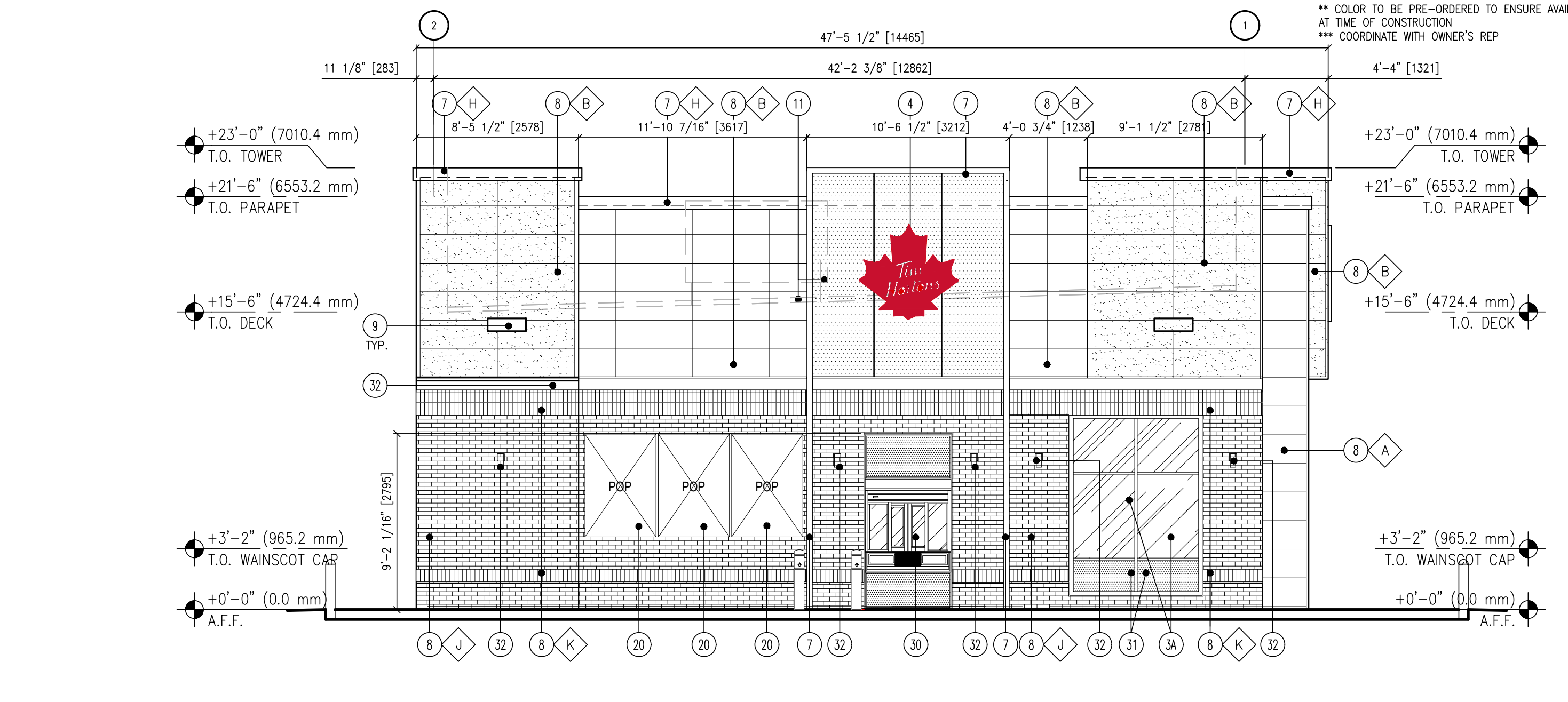
**1**  
"FRONT" (WEST)  
**ELEVATION**  
SCALE: 3/16" = 1'-0"



**2**  
"BACK" (EAST)  
**ELEVATION**  
SCALE: 3/16" = 1'-0"



**3**  
"SIDE" (SOUTH)  
**ELEVATION**  
SCALE: 3/16" = 1'-0"



**4**  
"SIDE" (NORTH)  
**ELEVATION**  
SCALE: 3/16" = 1'-0"