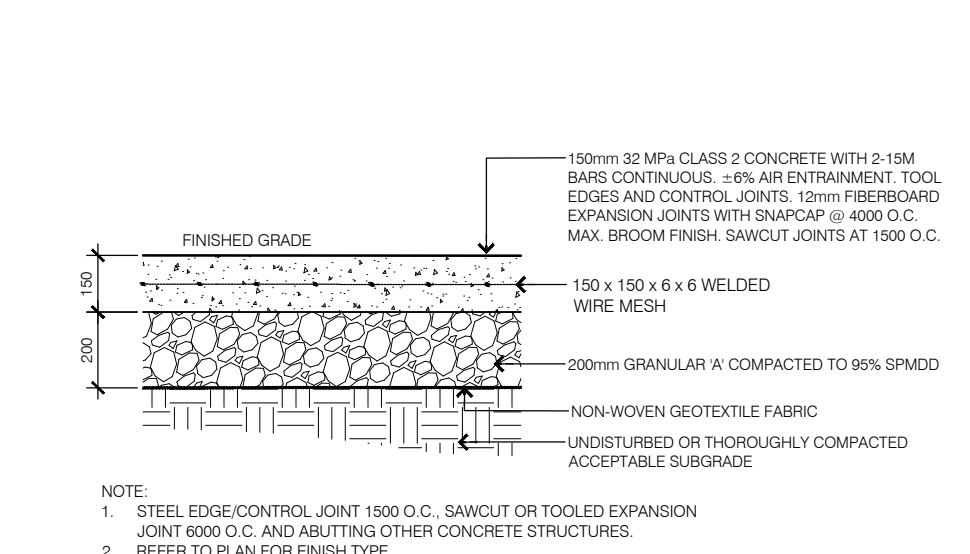


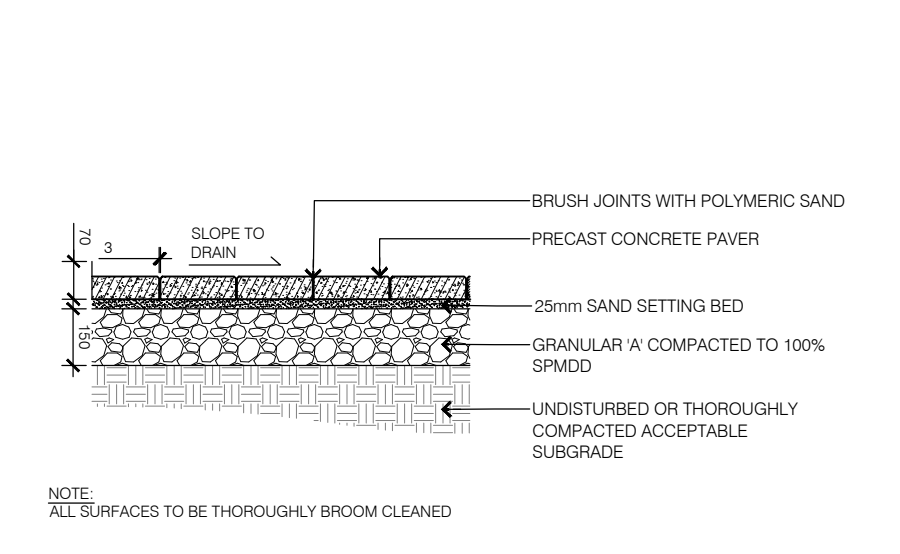
- L1-01 GENERAL NOTES**
- All general site information and conditions compiled from architect's and engineer's plans and surveys.
 - Do not scale this drawing.
 - Report any discrepancies prior to commencing work. No responsibility is born by the Landscape Architect for unknown subsurface conditions.
 - Reinstate all areas and items damaged as a result of construction activities to the satisfaction of the Landscape Architect.
 - Drawing may not be used for construction until signed by Landscape Architect as issued for construction.
 - The accuracy of the position of utilities is not guaranteed.
 - Individual utility co. must be contacted for confirmation of utility existence and location prior to digging.
 - This drawing is an instrument of service and requires the permission of the Landscape Architect for use. Copyright is reserved by the Landscape Architect, David M. Lashley.
- L1-01 LANDSCAPE NOTES**
- Plant material shall be No. 1 Grade and shall comply with the Metric Guide Specifications for Nursery stock (latest edition), published by Canadian Nursery Trades Association.
 - Plant substitutions shall not be permitted unless approved by the Landscape Architect.
 - Obtain approval of planting prior to digging.
 - Topsoil shall be garden silt mixture sandy loam with min. 5% organic matter and peat moss added at ratio of 1:10, topsoil to be approved by Landscape Architect.

NO.	DATE	DESCRIPTION
5	2021/09/17	RE-ISSUED FOR SITE PLAN CONTROL
4	2021/07/23	RE-ISSUED FOR SITE PLAN CONTROL
3	2021/04/30	ISSUED FOR SITE PLAN APPLICATION
2	2021/04/14	FOR REVIEW
1	2021/03/08	ISSUED FOR UDRP

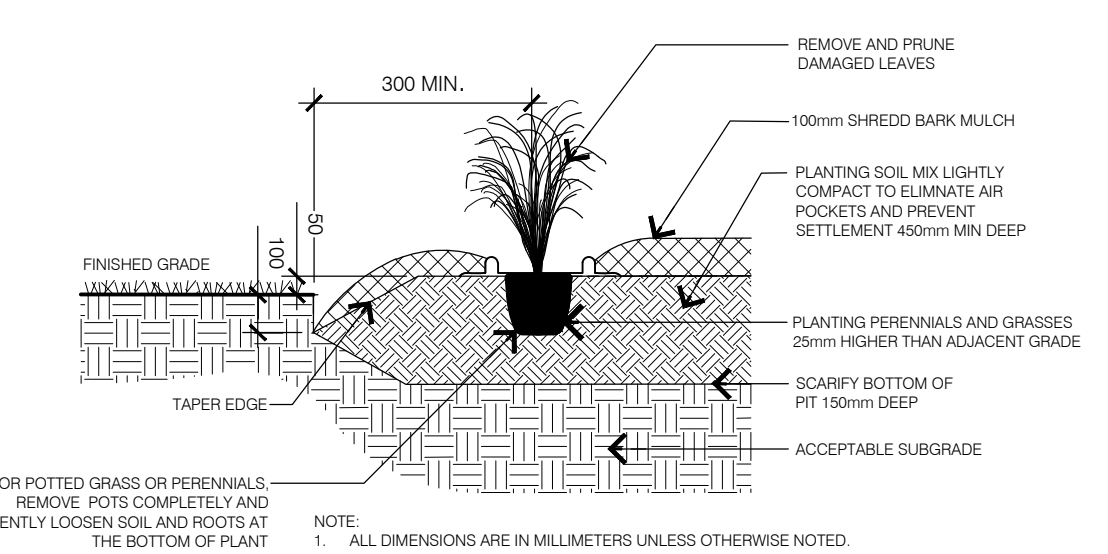
1 LANDSCAPE PLAN



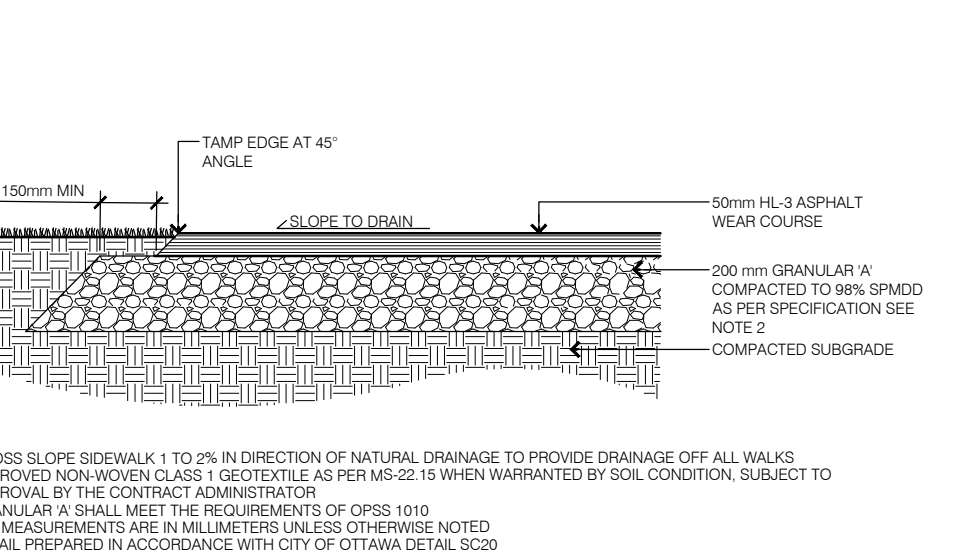
2 LIGHT DUTY CONCRETE



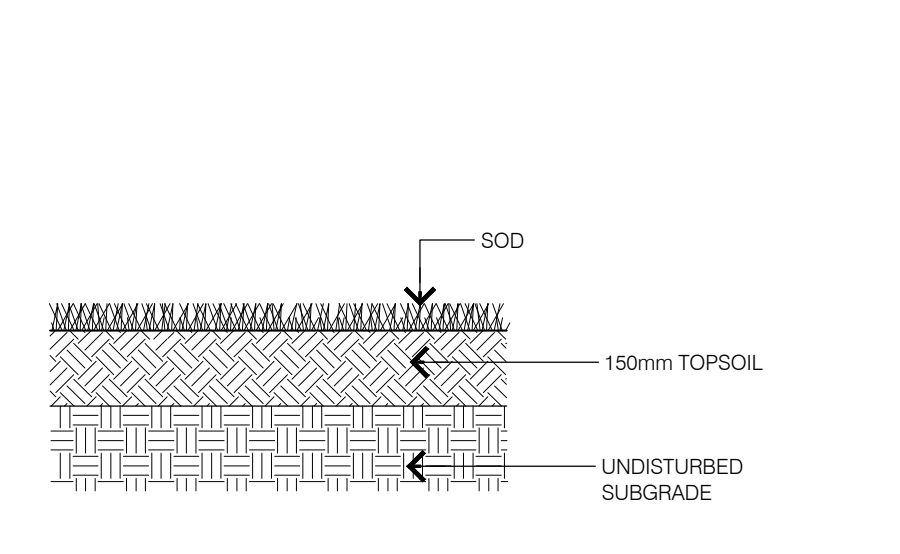
4 UNIT PAVING



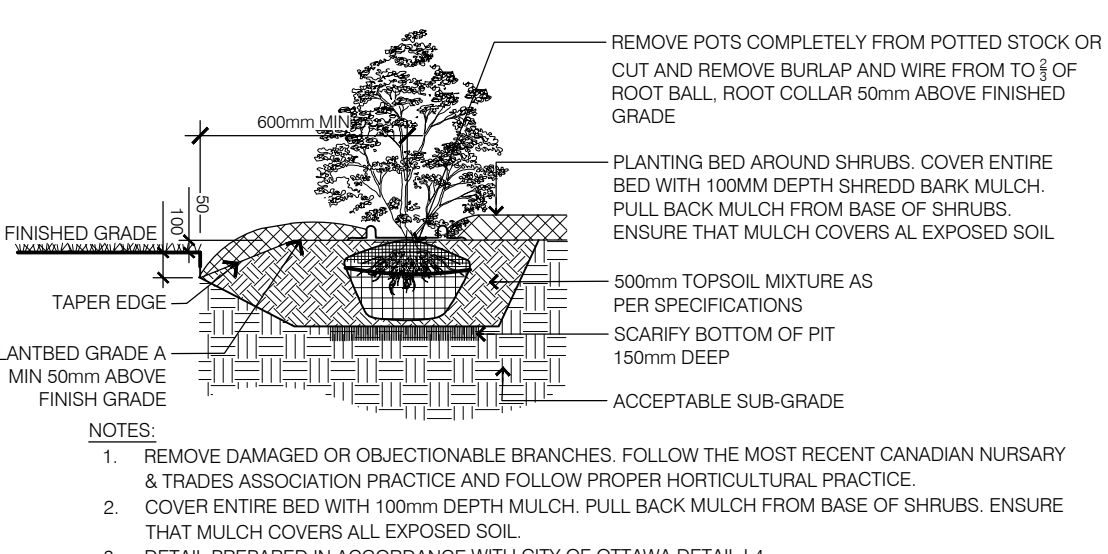
6 PERENNIAL PLANTING



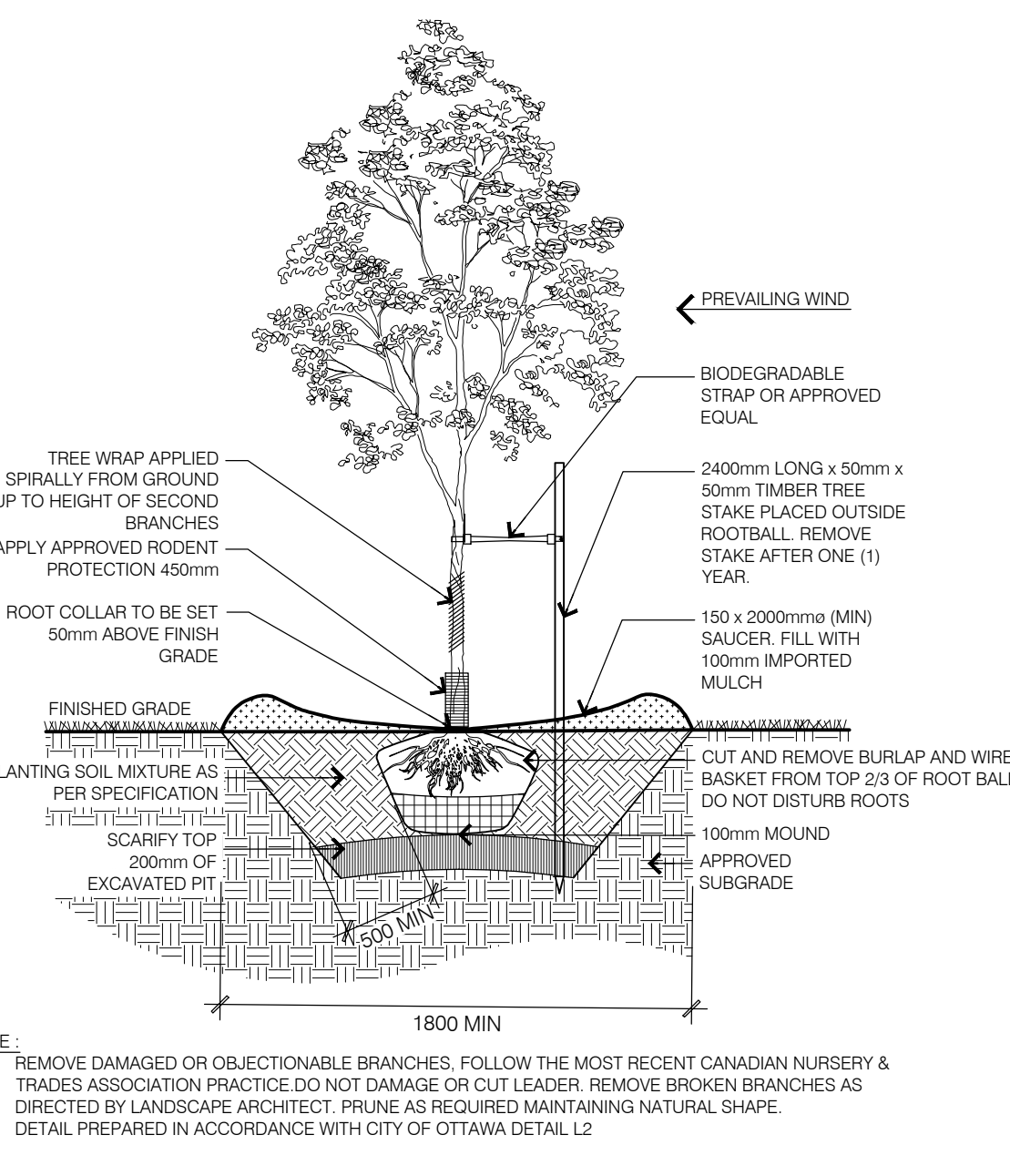
3 LIGHT DUTY ASPHALT



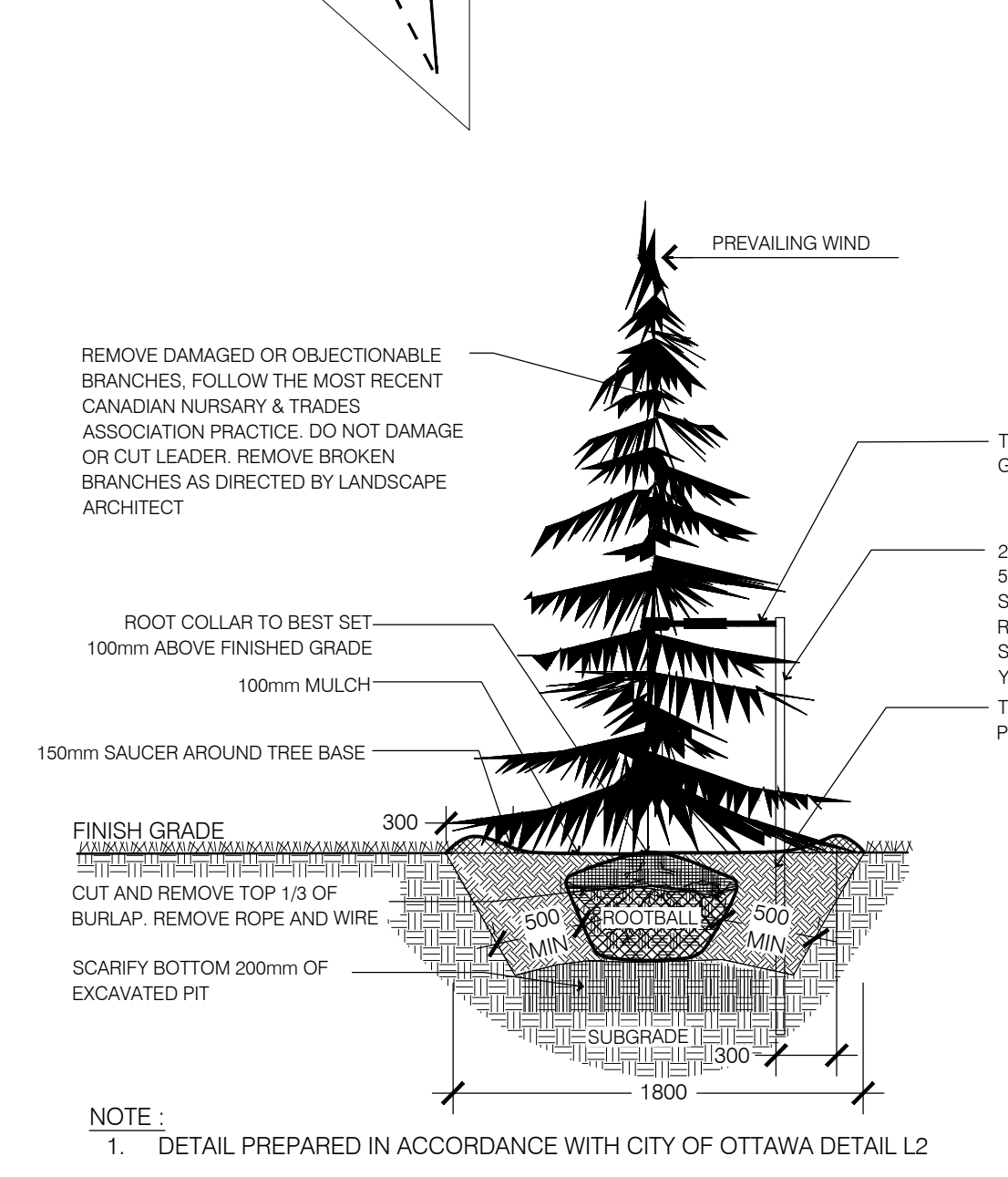
5 SOD



7 SHRUB PLANTING



8 DECIDUOUS TREE PLANTING



9 CONIFEROUS TREE

NO. ASSOCIATION OF LANDSCAPE ARCHITECTS ONTARIO
 SEAL: DAVID H. LASHLEY MEMBER
 NORTH: [North Arrow]

LASHLEY + ASSOCIATES
 LANDSCAPE ARCHITECTURE AND SITE ENGINEERING
 202 850 GLADSTONE AVENUE OTTAWA, ON K1Y 2E6
 T 613 238 6559 F 613 238 4551
 W LashleyA.com E LashleyA.com

CONSULTANT:
HOBIN ARCHITECTURE

PROJECT:
100 BAYSHORE 'LOT B'
 WOODRIDGE CRESCENT
 NEPEAN, ONTARIO

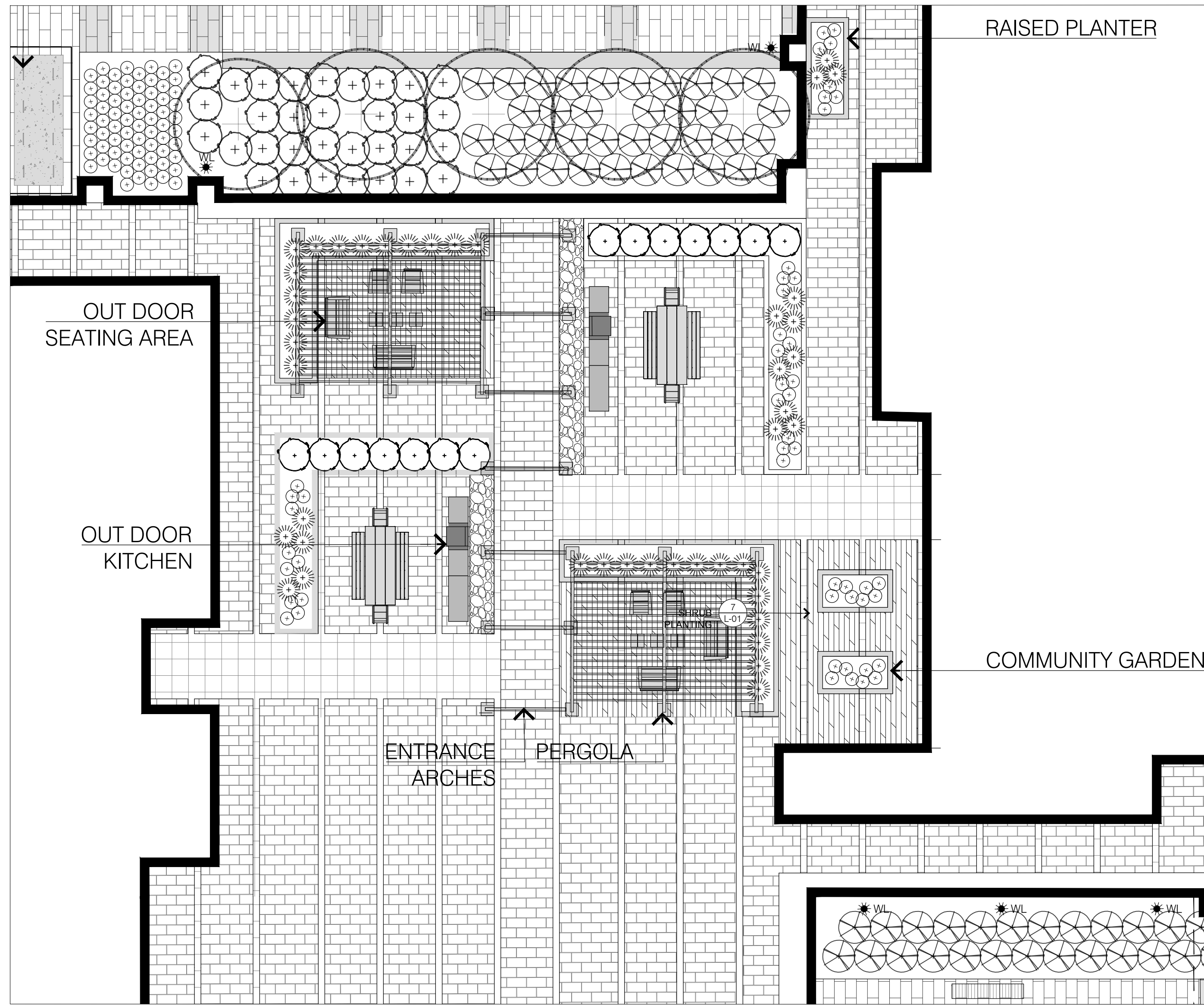
DRAWING TITLE:
LANDSCAPE PLAN

DATE:	2021/04/14	DRAWING NO.:	
SCALE:	AS NOTED		
DRAWN BY:	CNVL		
LA PROJECT NO.:	21792-1		

L-01

D07-12-17-0063

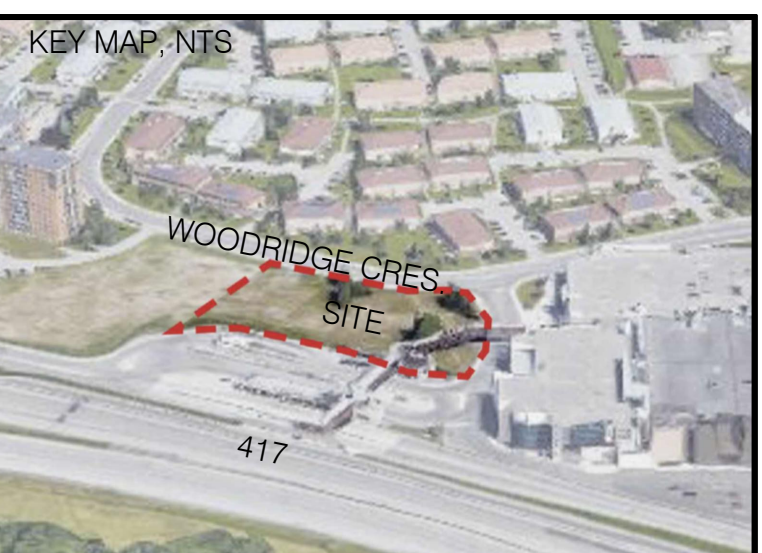
#17421



1 AMENITY LEVEL PLAN
L-02

1:100

- LEGEND**
- PROPERTY LINE
 - - - EASEMENT AREA
 - BUILDING
 - - - UNDERGROUND PARKING
 - + DECIDUOUS TREES
 - ☼ CONIFEROUS TREES
 - SOD
 - ▨ LIGHT DUTY CONCRETE
 - ▩ HEAVY DUTY CONCRETE
 - ▧ PAVER TYPE 1
 - ▦ PAVER TYPE 2
 - ▥ PAVER TYPE 3
 - ▤ PAVER TYPE 4
 - ▣ ROOF TOP DECKING
 - ▢ RIVER STONE
 - ASPHALT
 - ⊗ SHRUBS
 - ⊙ PERENNIALS
 - DC DEPRESSED CURB
 - BOLLARD
 - ▭ BENCH
 - ⚡ PROPOSED LIGHT (SEE ELECTRICAL)



- L1-01 GENERAL NOTES**
- All general site information and conditions compiled from architect's and engineer's plans and surveys.
 - Do not scale this drawing.
 - Report any discrepancies prior to commencing work. No responsibility is born by the Landscape Architect for unknown subsurface conditions.
 - Reinstate all areas and items damaged as a result of construction activities to the satisfaction of the Landscape Architect.
 - Drawing may not be used for construction until signed by Landscape Architect as issued for construction.
 - The accuracy of the position of utilities is not guaranteed.
 - Individual utility co. must be contacted for confirmation of utility existence and location prior to digging.
 - This drawing is an instrument of service and requires the permission of the Landscape Architect for use. Copyright is reserved by the Landscape Architect, David M. Lashley.

- L1-01 LANDSCAPE NOTES**
- Plant material shall be No. 1 Grade and shall comply with the Metric Guide Specifications for Nursery stock (latest edition), published by Canadian Nursery Trades Association.
 - Plant substitutions shall not be permitted unless approved by the Landscape Architect.
 - Obtain approval of planting prior to digging.
 - Topsoil shall be garden silt mixture sandy loam with min. 5% organic matter and peat moss added at ratio of 1:10, topsoil to be approved by Landscape Architect.

NO.	DATE	DESCRIPTION
5	2021/09/17	RE-ISSUED FOR SITE PLAN CONTROL
4	2021/07/23	RE-ISSUED FOR SITE PLAN CONTROL
3	2021/04/30	ISSUED FOR SITE PLAN APPLICATION
2	2021/04/14	FOR REVIEW
1	2021/03/08	ISSUED FOR UDRP

SEAL:

ASSOCIATION OF LANDSCAPE ARCHITECTS ONTARIO
DAVID H. LASHLEY
MEMBER

NORTH:

LASHLEY + ASSOCIATES
LANDSCAPE ARCHITECTURE AND SITE ENGINEERING

202-950 GLADSTONE AVENUE
OTTAWA, ON K1Y 3E6
T 613 283 8579
F 613 283 4261
W LashleyA.com
E Mail@LashleyA.com

CONSULTANT:

HOBIN ARCHITECTURE

PROJECT:

100 BAYSHORE 'LOT B'
WOODRIDGE CRESCENT
NEPEAN, ONTARIO

DRAWING TITLE:

AMENITY SPACE PLAN

DATE: 2021/04/14
SCALE: AS NOTED
DRAWN BY: CN/EL
LA PROJECT NO.: 21792-1

DRAWING NO.:
L-02

D07-12-17-0063

