

*G. Wildman*  
GERALDINE WILDMAN  
ACTING MANAGER, DEVELOPMENT REVIEW EAST  
PLANNING, REAL ESTATE & ECONOMIC DEVELOPMENT  
DEPARTMENT, CITY OF OTTAWA

**APPROVED**  
By Geraldine Wildman at 1:08 pm, Oct 21, 2022

PROJECT TEAM

**ARCHITECT**  
HOBIN ARCHITECTURE  
PATRICK BISSON  
T 413.238.7200

**PLANNING**  
GDP PLANNING & DESIGN  
CHRISTINE MCCLUAG  
T 413.850.8345

**CIVIL**  
NSP  
STEPHEN MCCAUGHEY  
T 413.690.3955

**LANDSCAPE ARCHITECT**  
LASHLEY & ASSOCIATES CORPORATION  
RIC CARROEN  
T 413.233.8579 X102

**TRANSPORTATION**  
BI GROUP  
DAVID HOOK  
T 413.225.1311 ext: 44029

**ENVIRONMENTAL**  
GRANDT WIND ENGINEERING  
JOSHUA FOSTER  
T 413.836.0434

LEGEND:

AF	ALUMINUM FLASHING
AP -I	ALUMINUM PANEL I
MV-I	MASONRY VENEER I
GR	GLASS RAILING
HMP	HORIZONTAL MASONRY PANEL (TERRAZZOTTA)
SP	SPANDREL PANEL
SHR-PT	STEEL COLUMN
VG	VISION GLASS

BIRD FRIENDLY GLASS: AS PER CITY BIRD SAFE GUIDELINES  
GUIDELINE 2 - Treatments to be applied to a minimum of 90% of the glass within the first 16 metres of height  
1. GLASS SPECIFIED TO BE LOW REFLECTIVITY ON LEV. 1-4  
2. GLASS FRIT FOR ALL BALCONY RAILINGS ON LEV. 4  
3. GLASS FRIT FOR ALL BALCONY RAILINGS ON ROOF TERRACE LEVELS

no.	date	revision
9	22.03.08	FINAL SITE PLAN SUBMISSION
8	21.12.17	ISSUED FOR S.P.A RESUB #3
7	21.09.17	ISSUED FOR S.P.A RESUB #2
6	21.07.23	ISSUED FOR S.P.A RESUB #1
5	21.04.30	ISSUED FOR S.P.A
4	20.07.24	RE-ISSUED FOR REZONING
3	20.06.04	RE-ISSUED FOR REZONING
2	20.03.30	RE-ISSUED FOR REZONING
1	19.02.29	ISSUED FOR REZONING

It is the responsibility of the appropriate contractor to check and verify all dimensions on site and report all errors and/or omissions to the architect.

All contractors must comply with all pertinent codes and by-laws.

Do not scale drawings.

This drawing may not be used for construction until signed.

Copyright reserved.

**Hobin Architecture Incorporated**  
63 Pamela Street  
Ottawa, Ontario  
Canada K1S 3K7  
T: 613 238 7200  
F: 613 235 2005  
E: mail@hobinarc.com  
hobinarc.com

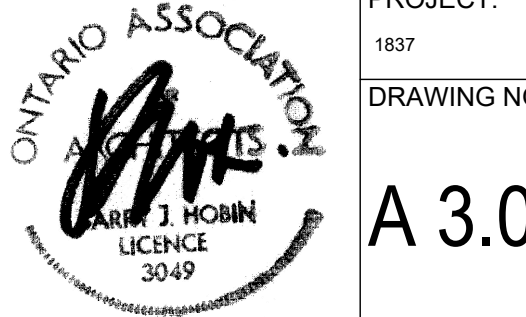


**HOBIN ARCHITECTURE**

PROJECT LOCATION:  
100 BAYSHORE LOT "B"  
WOODRIDGE CRESCENT  
DRAWING TITLE:  
ELEVATIONS

DRAWN BY: DATE: SCALE:  
PB 22.03.22 1:200

PROJECT: 1837  
DRAWING NO.: A 3.01  
REVISION NO.: # 18477




*Wildman*

GERALDINE WILDMAN  
ACTING MANAGER, DEVELOPMENT REVIEW EAST  
PLANNING, REAL ESTATE & ECONOMIC DEVELOPMENT  
DEPARTMENT, CITY OF OTTAWA

**APPROVED**

By Geraldine Wildman at 1:08 pm, Oct 21, 2022

PROJECT TEAM

- ARCHITECT  
HOBIN ARCHITECTURE  
PATRICK BISSON  
T 413.238.7200
- PLANNING & DESIGN  
G2P PLANNING & DESIGN  
CHRISTINE MCCUAIG  
T 413.850.8345
- CIVIL  
NSP  
STEPHEN MCCAUGHEY  
T 413.690.3955
- LANDSCAPE ARCHITECT  
LASHLEY & ASSOCIATES CORPORATION  
RIC CARREON  
T 413.233.8579 X102
- TRANSPORTATION  
BI GROUP  
DAVID HOOK  
T 413.225.1311 ext:44029
- ENVIRONMENTAL  
GRANDT WIND ENGINEERING  
JOSHUA FOSTER  
T 413.636.0634
- LEGEND:  
AF ALUMINUM FLASHING  
AP -1 ALUMINUM PANEL 1  
MV-1 MASONRY VENEER 1  
GR GLASS RAILING  
HMP HORIZONTAL MASONRY PANEL (TERRACOTTA)  
SP SPANDREL PANEL  
SHRFP STEEL COLUMN  
VG VISION GLASS
- BIRD FRIENDLY GLASS: AS PER CITY BIRD SAFE GUIDELINES  
GUIDELINE 2 - Treatments to be applied to a minimum of 90% of the glass within the first 16 meters of height  
1. GLASS SPECIFIED TO BE LOW REFLECTIVITY ON LEV. 4  
2. GLASS FRFP FOR ALL BALCONY RAILINGS ON LEV. 4  
3. GLASS FRFP FOR ALL BALCONY RAILINGS ON ROOF TERRACE LEVELS

no.	date	revision
9	22.03.08	FINAL SITE PLAN SUBMISSION
8	21.12.17	ISSUED FOR S.P.A RESUB #3
7	21.09.17	ISSUED FOR S.P.A RESUB #2
6	21.07.23	ISSUED FOR S.P.A RESUB #1
5	21.04.30	ISSUED FOR S.P.A
4	20.07.24	RE-ISSUED FOR REZONING
3	20.06.04	RE-ISSUED FOR REZONING
2	20.03.30	RE-ISSUED FOR REZONING
1	19.02.29	ISSUED FOR REZONING

It is the responsibility of the appropriate contractor to check and verify all dimensions on site and report all errors and/or omissions to the architect.

All contractors must comply with all pertinent codes and by-laws.

Do not scale drawings.

This drawing may not be used for construction until signed.

Copyright reserved.

Hobin Architecture Incorporated  
63 Pamela Street  
Ottawa, Ontario  
Canada K1S 3K7  
T: 613 238 7200  
F: 613 235 2005  
E: info@hobinarc.com  
hobinarc.com



PROJECT LOCATION:  
100 BAYSHORE LOT "B"  
WOODRIDGE CRESCENT  
DRAWING TITLE:  
ELEVATIONS

DRAWN BY: PB	DATE: 22.03.22	SCALE: 1:200
PROJECT: 1837		DRAWING NO.:
ONTARIO ASSOCIATION OF ARCHITECTS ARCHITECT HOBIN ARCHITECTURE LICENCE 3049		<b>A 3.02</b>
REVISION NO.:		# 18477



1 SOUTH ELEVATION  
1:200

*G. Wildman*

**GERALDINE WILDMAN**  
ACTING MANAGER, DEVELOPMENT REVIEW EAST  
PLANNING, REAL ESTATE & ECONOMIC DEVELOPMENT  
DEPARTMENT, CITY OF OTTAWA

**APPROVED**  
By Geraldine Wildman at 1:09 pm, Oct 21, 2022



**PROJECT TEAM**

**ARCHITECT**  
HOBIN ARCHITECTURE  
PATRICK BISSON  
T: 413.238.7200

**PLANNING**  
G2P PLANNING & DESIGN  
CHRISTINE MCCLUAG  
T: 413.850.8345

**CIVIL**  
NSP  
STEPHEN MCCAUGHEY  
T: 413.690.3955

**LANDSCAPE ARCHITECT**  
LASHLEY & ASSOCIATES CORPORATION  
NIC CARREON  
T: 413.233.8579 X102

**TRANSPORTATION**  
BI GROUP  
DAVID HOOK  
T: 413.225.1311 ext: 44029

**ENVIRONMENTAL**  
GRANDT WIND ENGINEERING  
JOSHUA FOSTER  
T: 413.836.0434

**LEGEND:**

- AF ALUMINUM FLASHING
- AP-I ALUMINUM PANEL I
- MV-I MASONRY VENEER I
- GR GLASS RAILING
- HMP HORIZONTAL MASONRY PANEL (TERRAZZOTA)
- SP SPANDREL PANEL
- SHR STEEL COLUMN
- VG VISION GLASS

**BIRD FRIENDLY GLASS - AS PER CITY BIRD SAFE GUIDELINES**  
GUIDELINE 2 - Treatments to be applied to a minimum of 90% of the glass within the first 16 metres of height. ---  
1. GLASS SPECIFIED TO BE LOW REFLECTIVITY ON LEVEL 1-4  
2. GLASS FRT FOR ALL BALCONY RAILINGS ON LEVEL 4  
3. GLASS FRT FOR ALL BALCONY RAILINGS ON ROOF TERRACE LEVELS

no.	date	revision
9	22.03.08	FINAL SITE PLAN SUBMISSION
8	21.12.17	ISSUED FOR S.P.A RESUB #3
7	21.09.17	ISSUED FOR S.P.A RESUB #2
6	21.07.23	ISSUED FOR S.P.A RESUB #1
5	21.04.30	ISSUED FOR S.P.A
4	20.07.24	RE-ISSUED FOR REZONING
3	20.06.04	RE-ISSUED FOR REZONING
2	20.03.30	RE-ISSUED FOR REZONING
1	19.02.29	ISSUED FOR REZONING

It is the responsibility of the appropriate contractor to check and verify all dimensions on site and report all errors and/or omissions to the architect.

All contractors must comply with all pertinent codes and by-laws.

Do not scale drawings.

This drawing may not be used for construction until signed.

Copyright reserved.

**Hobin Architecture Incorporated**  
63 Pamela Street  
Ottawa, Ontario  
Canada K1S 3K7  
T: 613 238 7200  
F: 613 235 2005  
E: info@hobin.com  
hobin.com

**PROJECT LOCATION:**  
100 BAYSHORE LOT "B"

WOODRIDGE CRESCENT

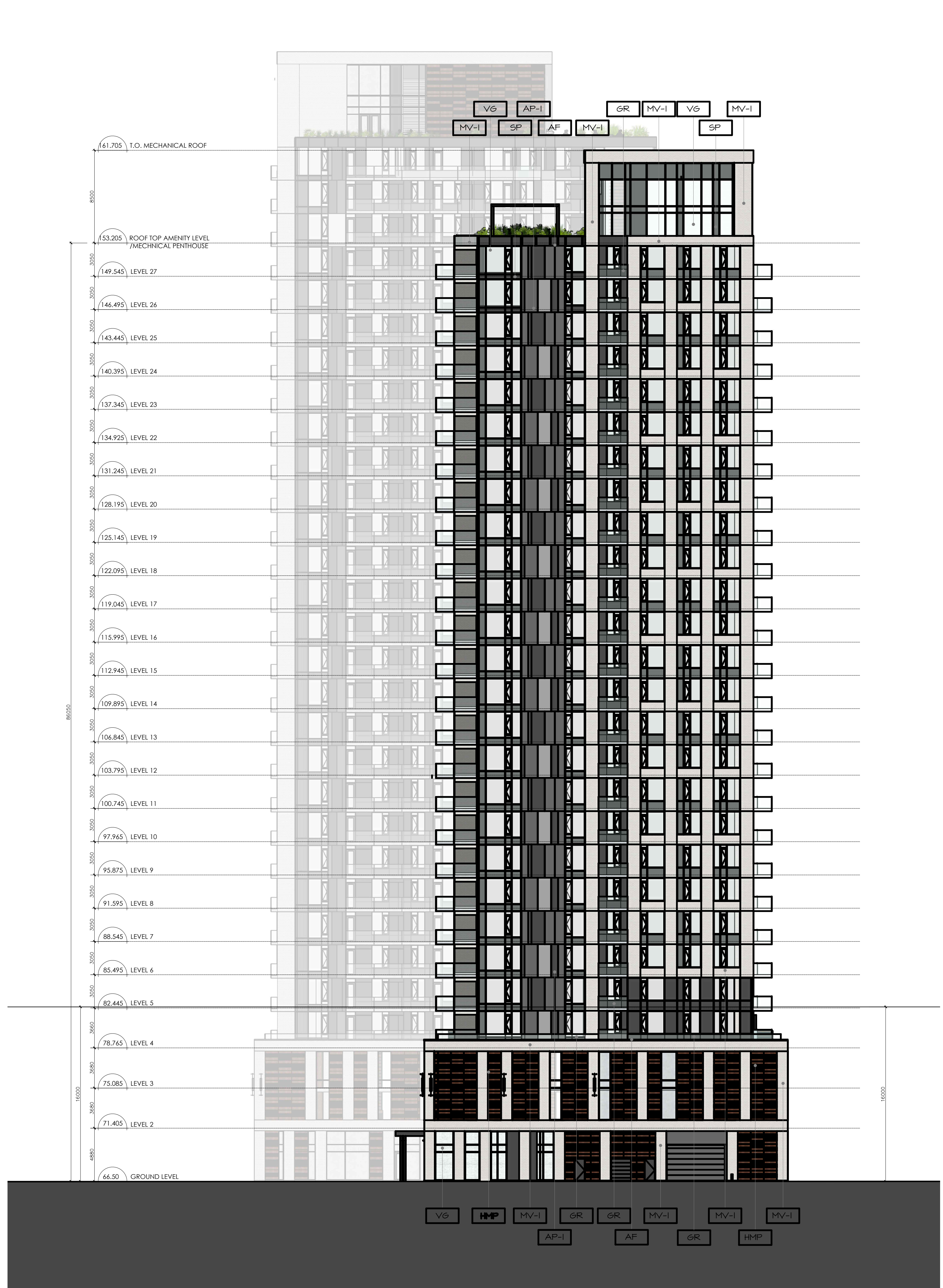
**DRAWING TITLE:**  
ELEVATIONS

**DRAWN BY:** PB **DATE:** 22.03.22 **SCALE:** 1:200

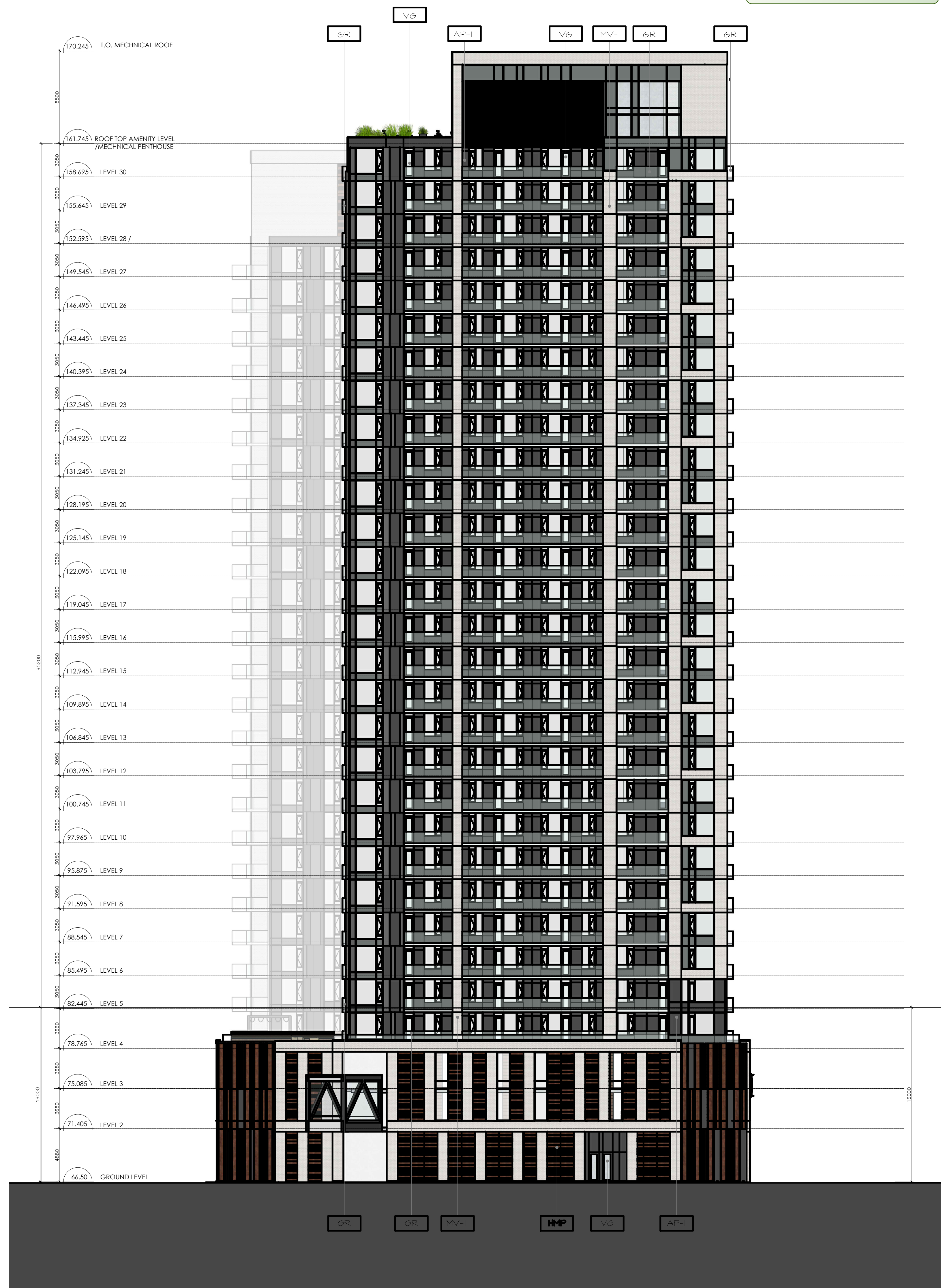
**PROJECT:** 1837 **DRAWING NO.:** A 3.03

**ONTARIO ASSOCIATION OF ARCHITECTS**  
JAMES J. MOYAN  
LICENSE 3049

REVISION NO.: # 18477



1 WEST ELEVATION  
A3.03 1:200



2 EAST ELEVATION  
A3.03 1:200

*G. Wildman*

**GERALDINE WILDMAN**  
 ACTING MANAGER, DEVELOPMENT REVIEW EAST  
 PLANNING, REAL ESTATE & ECONOMIC DEVELOPMENT  
 DEPARTMENT, CITY OF OTTAWA

**APPROVED**  
 By Geraldine Wildman at 1:09 pm, Oct 21, 2022



**PROJECT TEAM**

**ARCHITECT**  
 HOBIN ARCHITECTURE  
 PATRICK BISSON  
 T: 613.238.7200

**PLANNING**  
 G2P PLANNING & DESIGN  
 CHRISTINE MCCLUAIG  
 T: 613.850.8345

**CIVIL**  
 HSP  
 STEPHEN MCCAUGHEY  
 T: 613.690.3955

**LANDSCAPE ARCHITECT**  
 LASHLEY & ASSOCIATES CORPORATION  
 RIC CARREON  
 T: 613.233.8579 X102

**TRANSPORTATION**  
 BI GROUP  
 DAVID HOOK  
 T: 613.225.1311 ext: 64029

**ENVIRONMENTAL**  
 GRADIENT WIND ENGINEERING  
 JOSHUA FOSTER  
 T: 613.936.0634

**LEGEND:**

AF	ALUMINUM FLASHING
AP-I	ALUMINUM PANEL I
MV-I	MASONRY VENEER I
GR	GLASS RAILING
HMP	HORIZONTAL MASONRY PANEL (TERRAZZOTTA)
SP	SPANDREL PANEL
SHRP	STEEL COLUMN
VG	VISION GLASS

**BIRD FRIENDLY GLASS - AS PER CITY BIRD SAFE GUIDELINES**  
 GUIDELINE 2 - Treatments to be applied to a minimum of 90% of the glass within the first 16 metres of height.

- GLASS SPECIFIED TO BE LOW REFLECTIVITY ON LEVEL 4
- GLASS FRT FOR ALL BALCONY RAILINGS ON LEVEL 4
- GLASS FRT FOR ALL BALCONY RAILINGS ON ROOF TERRACE LEVELS

no.	date	revision
9	21.12.17	FINAL SITE PLAN SUBMISSION
8	21.12.17	ISSUED FOR S.P.A RESUB #3
7	21.09.17	ISSUED FOR S.P.A RESUB #2
6	21.07.23	ISSUED FOR S.P.A RESUB #1
5	21.04.30	ISSUED FOR S.P.A
4	20.07.24	RE-ISSUED FOR REZONING
3	20.06.04	RE-ISSUED FOR REZONING
2	20.03.30	RE-ISSUED FOR REZONING
1	19.02.29	ISSUED FOR REZONING

It is the responsibility of the appropriate contractor to check and verify all dimensions on site and report all errors and/or omissions to the architect.

All contractors must comply with all pertinent codes and by-laws.

Do not scale drawings.

This drawing may not be used for construction until signed.

Copyright reserved.

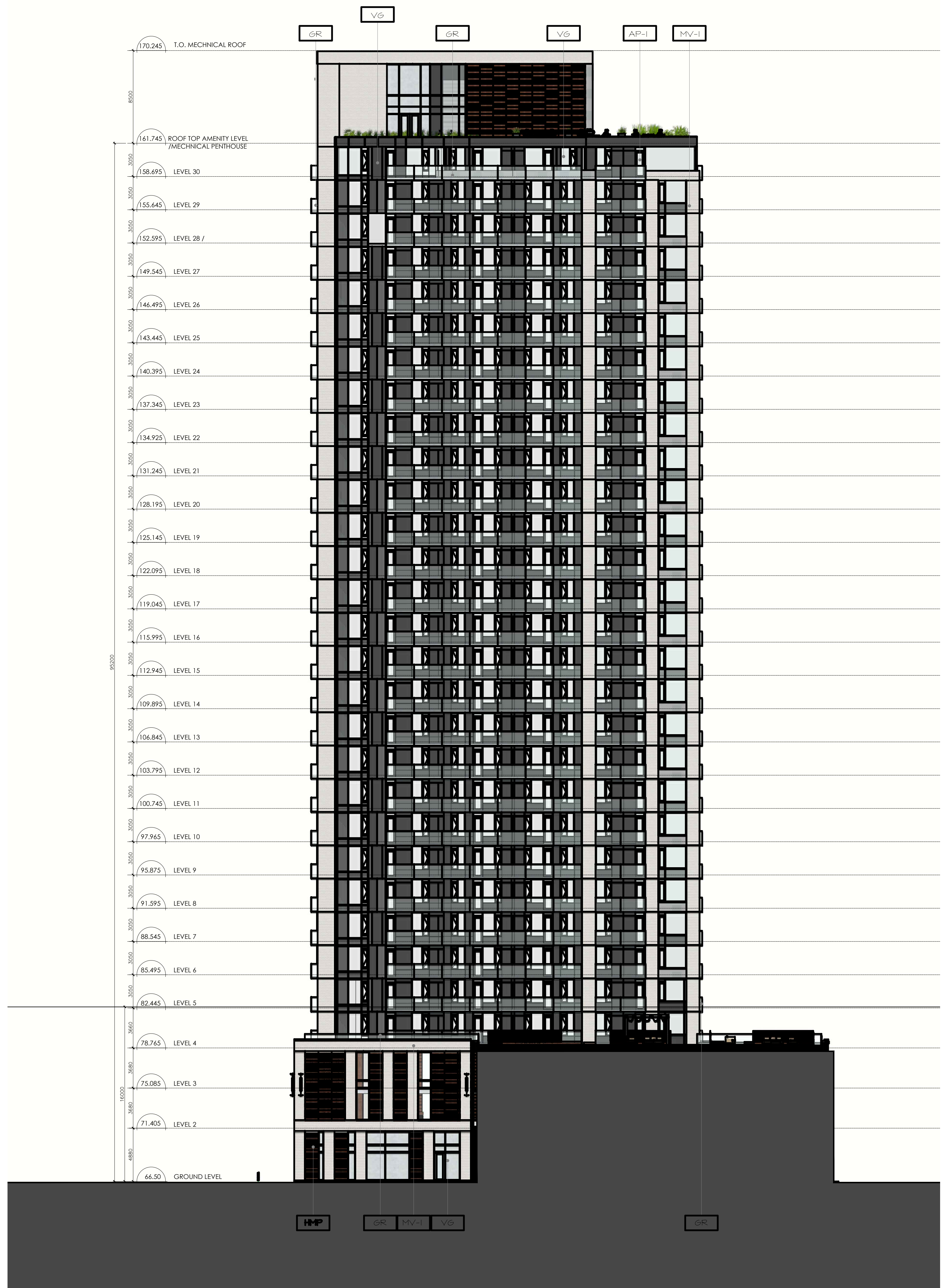
**Hobin Architecture Incorporated**  
 63 Pamela Street  
 Ottawa, Ontario  
 Canada K1S 3K7  
 T: 613 238 7200  
 F: 613 235 2005  
 E: mail@hobinarc.com  
 hobinarc.com

**PROJECT LOCATION:**  
 100 BAYSHORE LOT "B"  
 WOODRIDGE CRESCENT

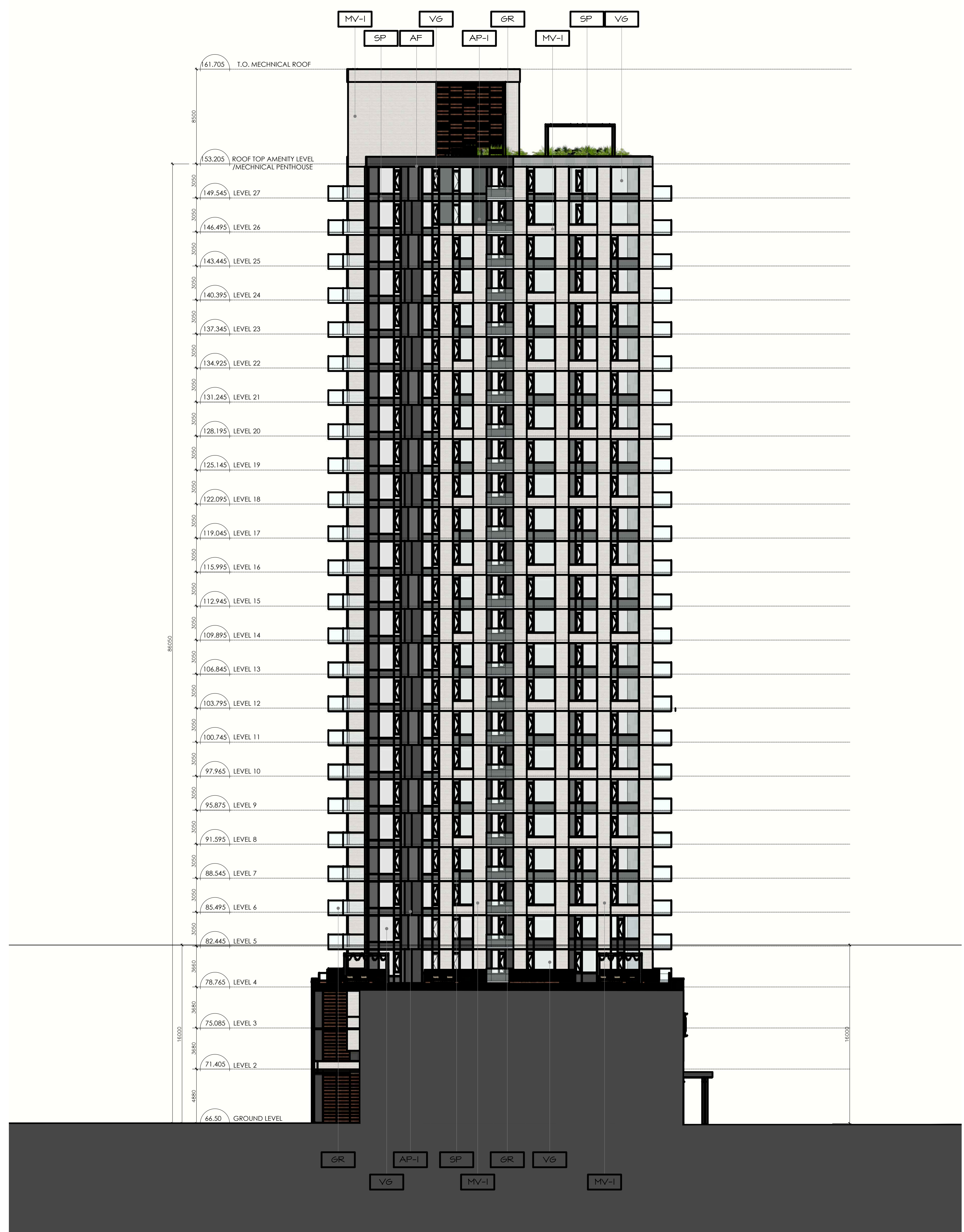
**DRAWING TITLE:**  
 ELEVATIONS

**DRAWN BY:** PB    **DATE:** 22.03.23    **SCALE:** 1:200

**PROJECT:** 1837  
**DRAWING NO.:** A 3.04  
**REVISION NO.:** 007-1837-0051



1 WEST ELEVATION - EAST TOWER  
 A3.04 1:200



2 EAST ELEVATION - WEST TOWER  
 A3.04 1:200