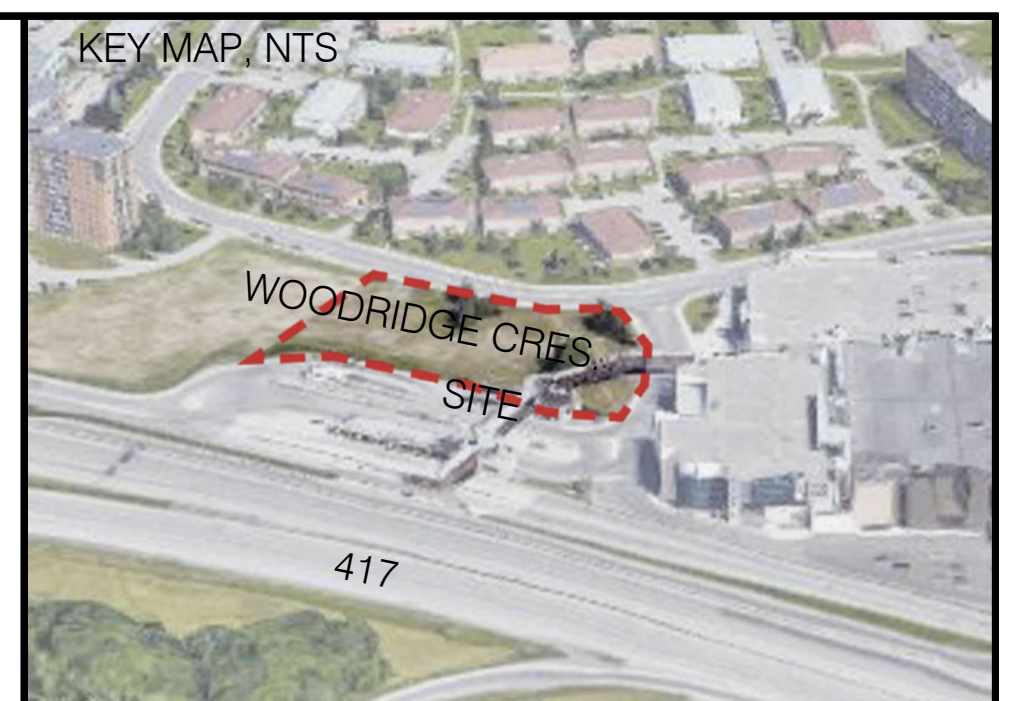


LEGEND

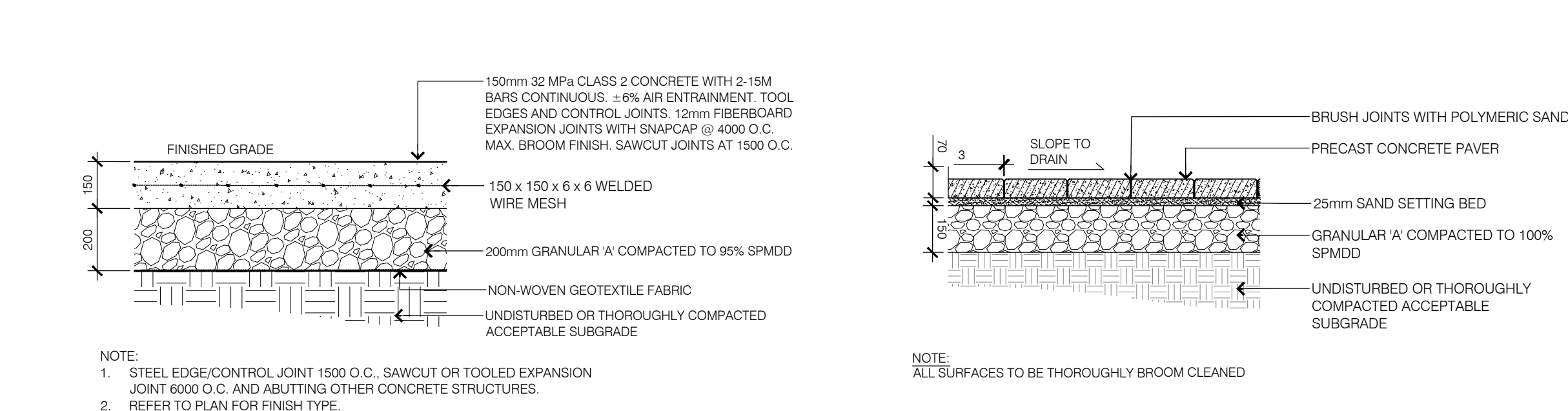
- PROPERTY LINE
- - - EASEMENT AREA
- ▬ BUILDING
- ▬ UNDERGROUND PARKING
- DECIDUOUS TREES
- ⊕ CONIFEROUS TREES
- ▨ SOD
- ▨ LIGHT DUTY CONCRETE
- ▨ HEAVY DUTY CONCRETE
- ▨ PAVER TYPE 1
- ▨ PAVER TYPE 2
- ▨ PAVER TYPE 3
- ▨ PAVER TYPE 4
- ▨ ROOF TOP DECKING
- ▨ RIVER STONE
- ▨ ASPHALT
- ▨ TACTILE STRIP
- SHRUBS
- PERENNIALS
- DC DEPRESSED CURB
- BOLLARD
- ▨ BENCH
- PROPOSED LIGHT (SEE ELECTRICAL)
- ▨ BUILDING ENTRANCES
- ▨ LOW WALLS



- L1-01 GENERAL NOTES**
- All general site information and conditions compiled from architect's and engineer's plans and surveys.
 - Do not scale this drawing.
 - Report any discrepancies prior to commencing work. No responsibility is born by the Landscape Architect for unknown subsurface conditions.
 - Reinstate all areas and items damaged as a result of construction activities to the satisfaction of the Landscape Architect.
 - Drawing may not be used for construction until signed by Landscape Architect as issued for construction.
 - The accuracy of the position of utilities is not guaranteed.
 - Individual utility co. must be contacted for confirmation of utility existence and location prior to digging.
 - This drawing is an instrument of service and requires the permission of the Landscape Architect for use. Copyright is reserved by the Landscape Architect, David M. Lashley.
- L1-01 LANDSCAPE NOTES**
- Plant material shall be No. 1 Grade and shall comply with the Metric Guide Specifications for Nursery stock (latest edition), published by Canadian Nursery Trades Association.
 - Plant substitutions shall not be permitted unless approved by the Landscape Architect.
 - Obtain approval of planning prior to digging.
 - Topsoil shall be garden silt mixture sandy loam with min. 5% organic matter and peat moss added at ratio of 1:10, topsoil to be approved by Landscape Architect.

1 LANDSCAPE PLAN

L-01



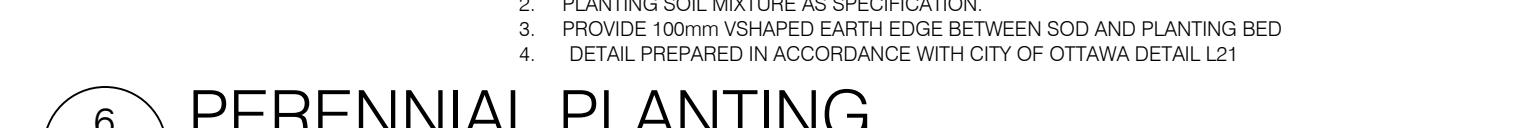
2 LIGHT DUTY CONCRETE

L-01



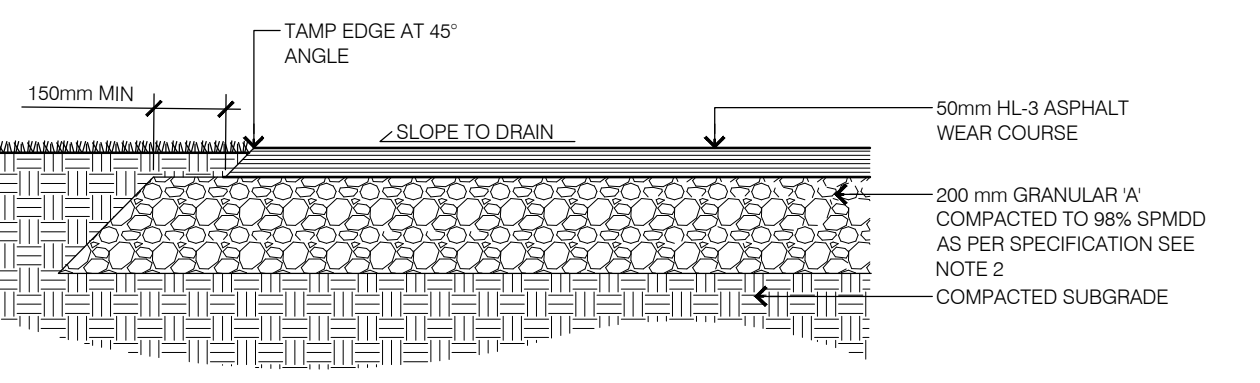
4 UNIT PAVING

L-01



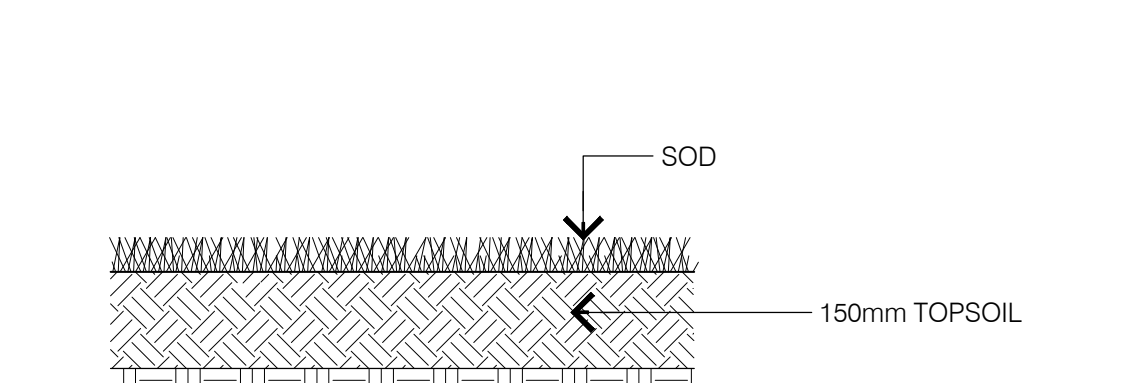
6 PERENNIAL PLANTING

L-01



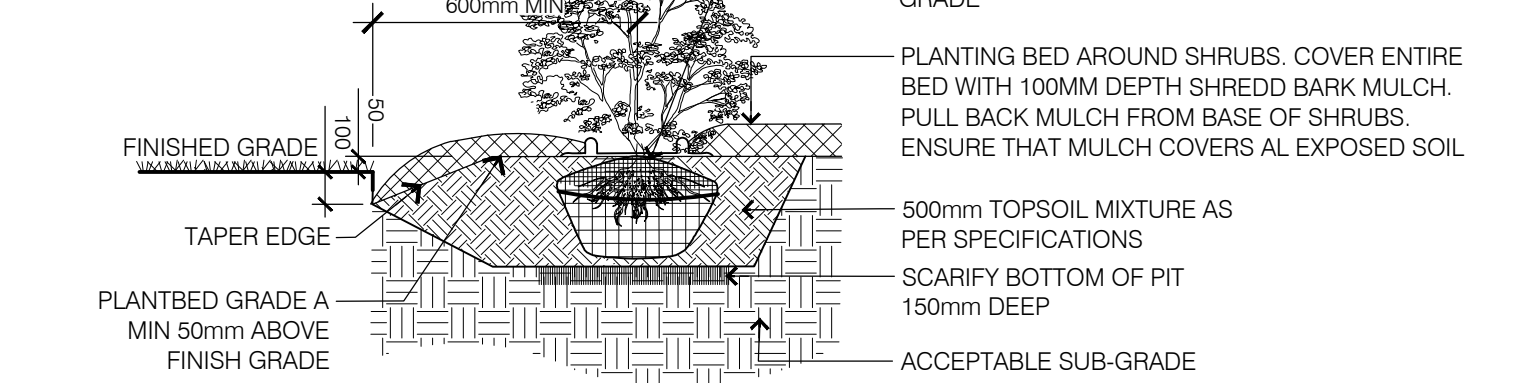
3 LIGHT DUTY ASPHALT

L-01



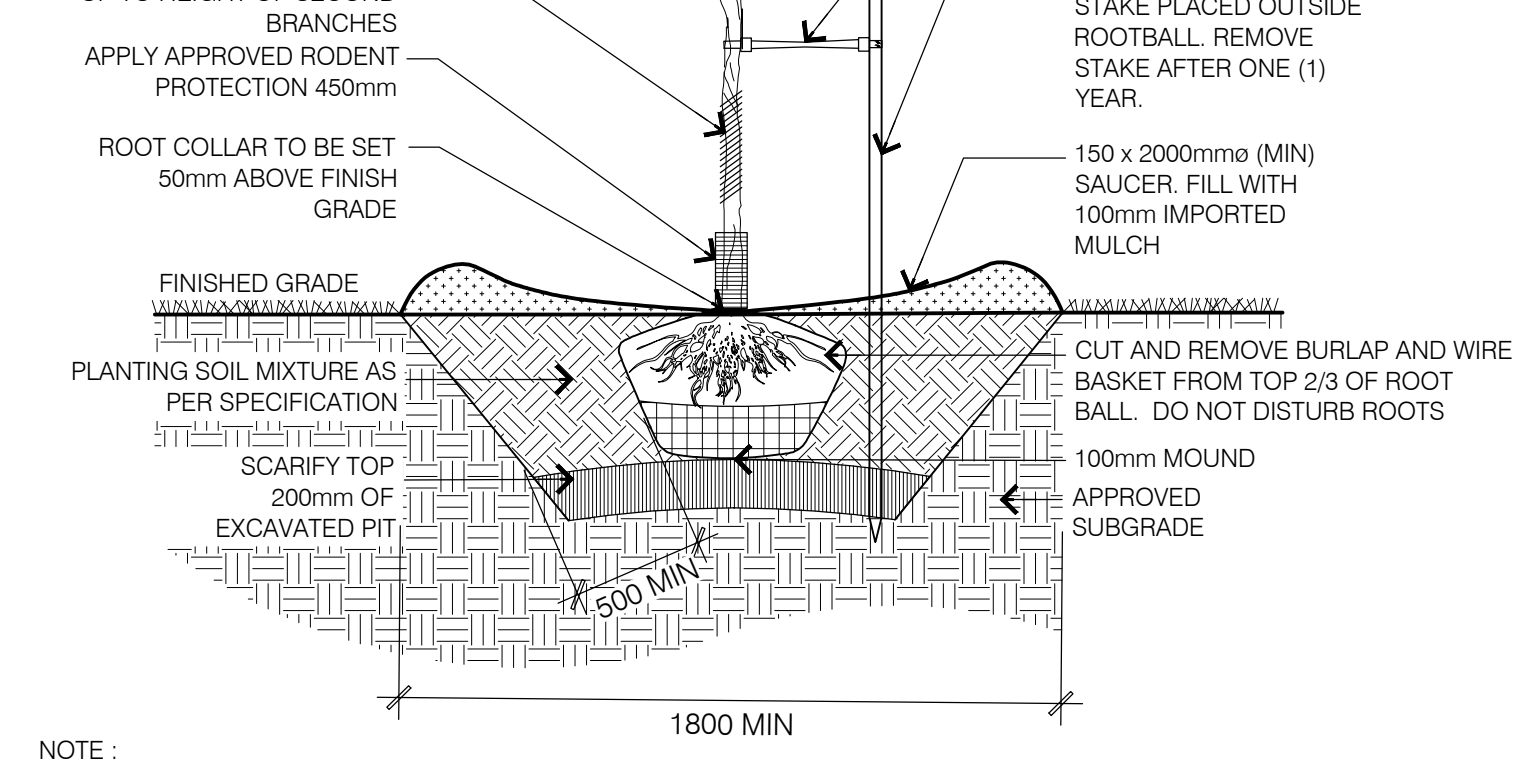
5 SOD

L-01



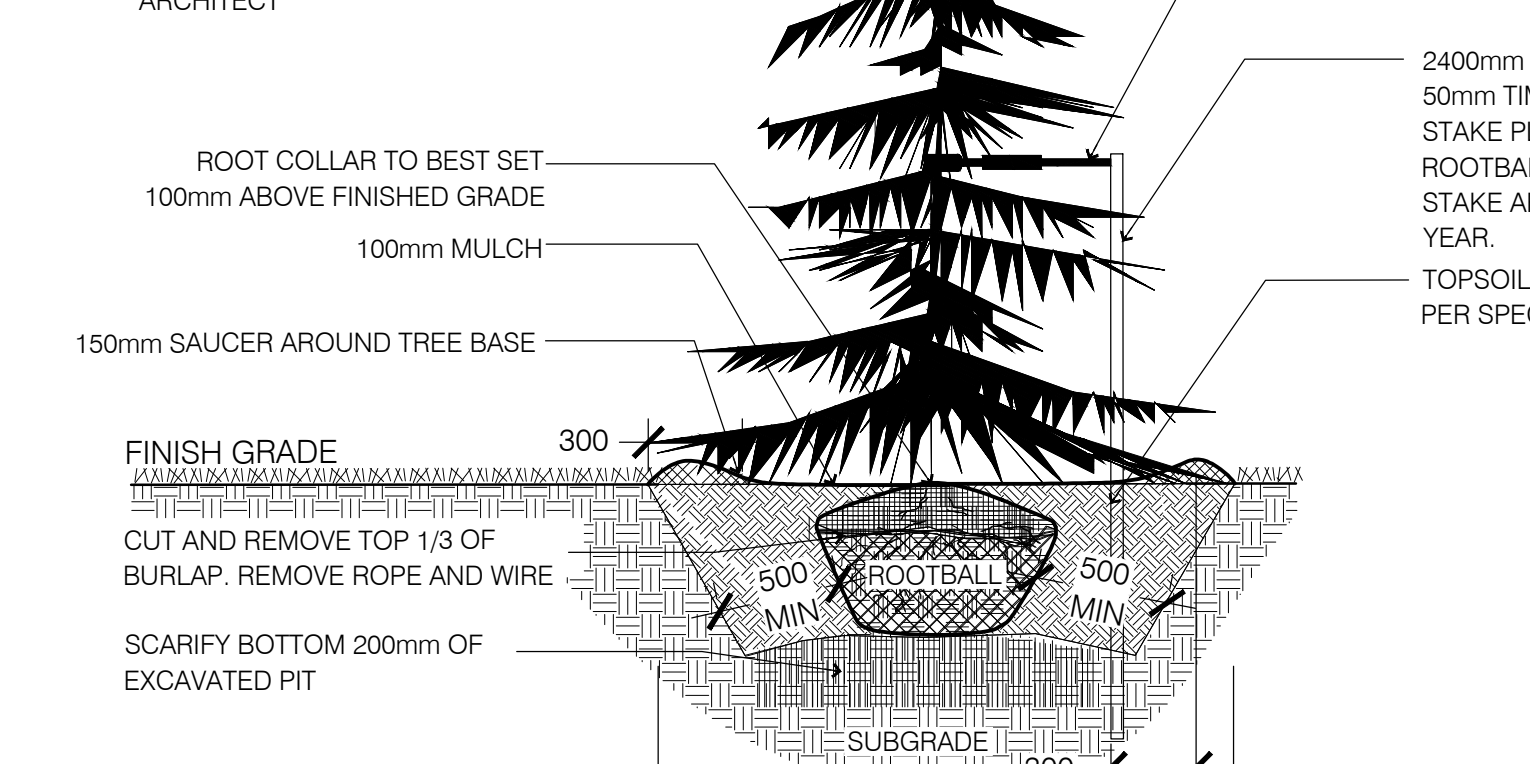
7 SHRUB PLANTING

L-01



8 DECIDUOUS TREE PLANTING

L-01



9 CONIFEROUS TREE

L-01

NO.	DATE	DESCRIPTION
7	2021/12/17	RE-ISSUED FOR SITE PLAN CONTROL
6	2021/12/10	RE-ISSUED FOR SITE PLAN CONTROL
5	2021/09/17	RE-ISSUED FOR SITE PLAN CONTROL
4	2021/07/23	RE-ISSUED FOR SITE PLAN CONTROL
3	2021/04/30	ISSUED FOR SITE PLAN APPLICATION
2	2021/04/14	FOR REVIEW
1	2021/03/08	ISSUED FOR UDRP

NO. DATE DESCRIPTION

SEAL: NORTH:

LASHLEY + ASSOCIATES
LANDSCAPE ARCHITECTURE AND SITE ENGINEERING

200 860 GARDEN AVENUE
OTTAWA, ON K1Y 3B8
T 613 233 8270
F 613 233 4501
W LashleyA.com
E Lashley@LashleyA.com

CONSULTANT:

HOBIN ARCHITECTURE

PROJECT:

100 BAYSHORE 'LOT B'
WOODRIDGE CRESCENT
NEPEAN, ONTARIO

DRAWING TITLE:

LANDSCAPE PLAN

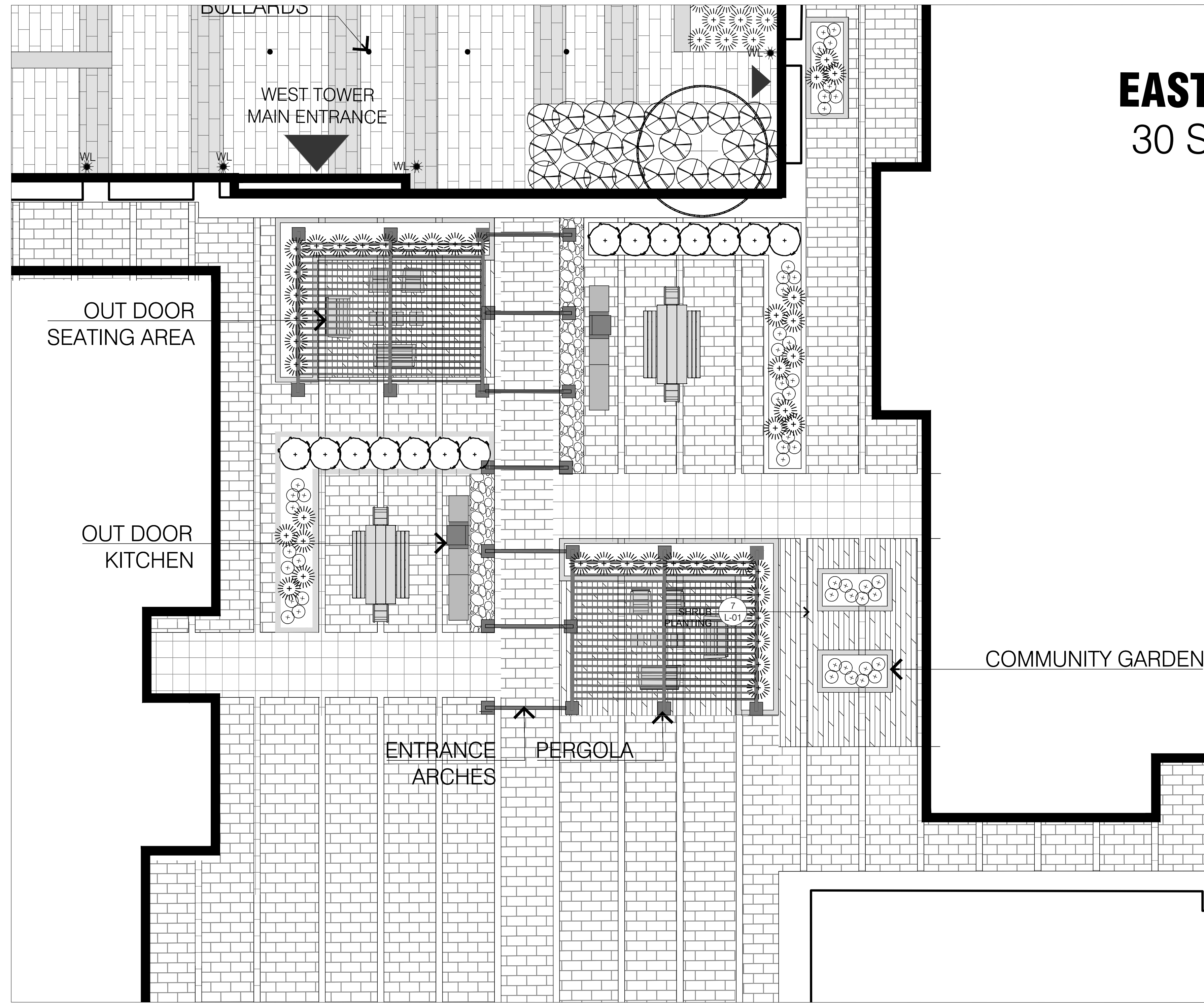
DATE: 2021/04/14 **DRAWING NO.:**

SCALE: AS NOTED

DRAWN BY: CN/EL

LA PROJECT NO.: 21792-1 **L-01**

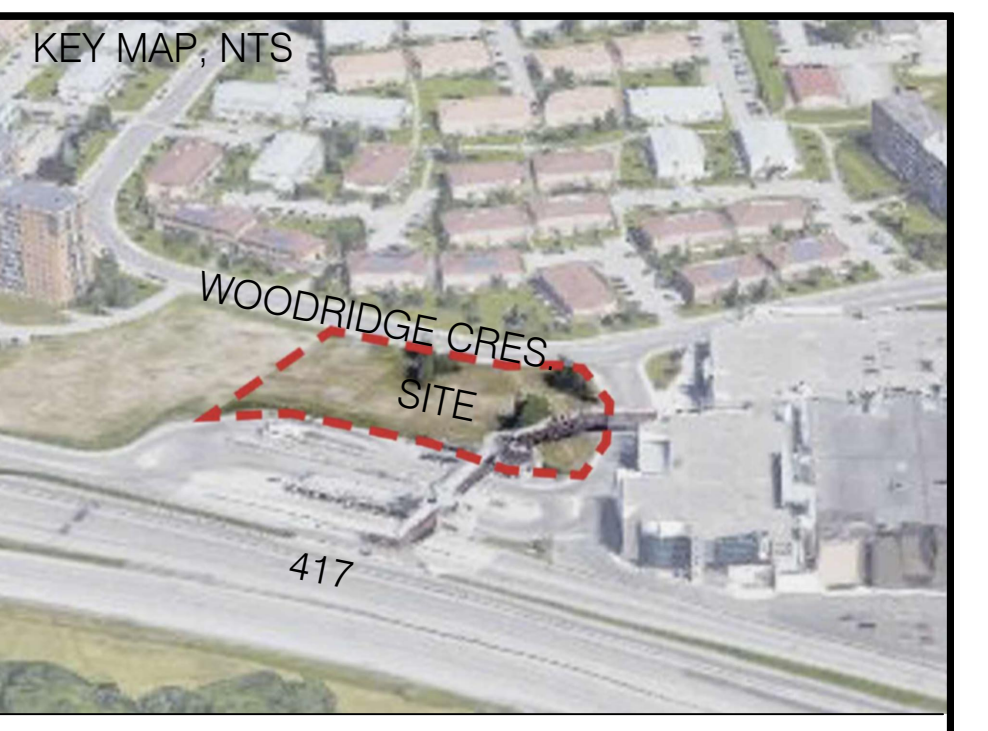
#17421



1 AMENITY LEVEL PLAN

1:100

- LEGEND**
- PROPERTY LINE
 - - - EASEMENT AREA
 - BUILDING
 - - - UNDERGROUND PARKING
 - ⊕ DECIDUOUS TREES
 - ⊗ CONIFEROUS TREES
 - ▨ SOD
 - ▨ LIGHT DUTY CONCRETE
 - ▨ HEAVY DUTY CONCRETE
 - ▨ PAVER TYPE 1
 - ▨ PAVER TYPE 2
 - ▨ PAVER TYPE 3
 - ▨ PAVER TYPE 4
 - ▨ ROOF TOP DECKING
 - ▨ RIVER STONE
 - ▨ ASPHALT
 - ▨ TACTILE STRIP
 - ⊗ SHRUBS
 - ⊗ PERENNIALS
 - DC DEPRESSED CURB
 - BOLLARD
 - ▨ BENCH
 - ⊕ PROPOSED LIGHT (SEE ELECTRICAL)
 - ▶ BUILDING ENTRANCES
 - ▨ LOW WALLS



- L1-01 GENERAL NOTES**
- All general site information and conditions compiled from architect's and engineer's plans and surveys.
 - Do not scale this drawing.
 - Report any discrepancies prior to commencing work. No responsibility is born by the Landscape Architect for unknown subsurface conditions.
 - Reinstate all areas and items damaged as a result of construction activities to the satisfaction of the Landscape Architect.
 - Drawing may not be used for construction until signed by Landscape Architect as issued for construction.
 - The accuracy of the position of utilities is not guaranteed.
 - Individual utility co. must be contacted for confirmation of utility existence and location prior to digging.
 - This drawing is an instrument of service and requires the permission of the Landscape Architect for use. Copyright is reserved by the Landscape Architect, David M. Lashley.

- L1-01 LANDSCAPE NOTES**
- Plant material shall be No. 1 Grade and shall comply with the Metric Guide Specifications for Nursery stock (latest edition), published by Canadian Nursery Trades Association.
 - Plant substitutions shall not be permitted unless approved by the Landscape Architect.
 - Obtain approval of planting prior to digging.
 - Topsoil shall be garden silt mixture sandy loam with min. 5% organic matter and peat moss added at ratio of 1:10, topsoil to be approved by Landscape Architect.

NO.	DATE	DESCRIPTION
7	2021/12/17	RE-ISSUED FOR SITE PLAN CONTROL
6	2021/12/10	RE-ISSUED FOR SITE PLAN CONTROL
5	2021/09/17	RE-ISSUED FOR SITE PLAN CONTROL
4	2021/07/23	RE-ISSUED FOR SITE PLAN CONTROL
3	2021/04/30	ISSUED FOR SITE PLAN APPLICATION
2	2021/04/14	FOR REVIEW
1	2021/03/08	ISSUED FOR UDRP

SEAL:

ASSOCIATION OF LANDSCAPE ARCHITECTS ONTARIO MEMBER

DAVID M. LASHLEY

NORTH:

LASHLEY + ASSOCIATES

LANDSCAPE ARCHITECTURE AND SITE ENGINEERING

200 860 GLADSTONE AVENUE
OTTAWA, ONT. K1Y 2B8
T 613 238 8870
F 613 238 4051
W LashleyA.com
E info@LashleyA.com

CONSULTANT:

HOBIN ARCHITECTURE

PROJECT:

100 BAYSHORE 'LOT B'
WOODRIDGE CRESCENT
NEPEAN, ONTARIO

DRAWING TITLE:

AMENITY SPACE PLAN

DATE: 2021/04/14 **DRAWING NO.:**

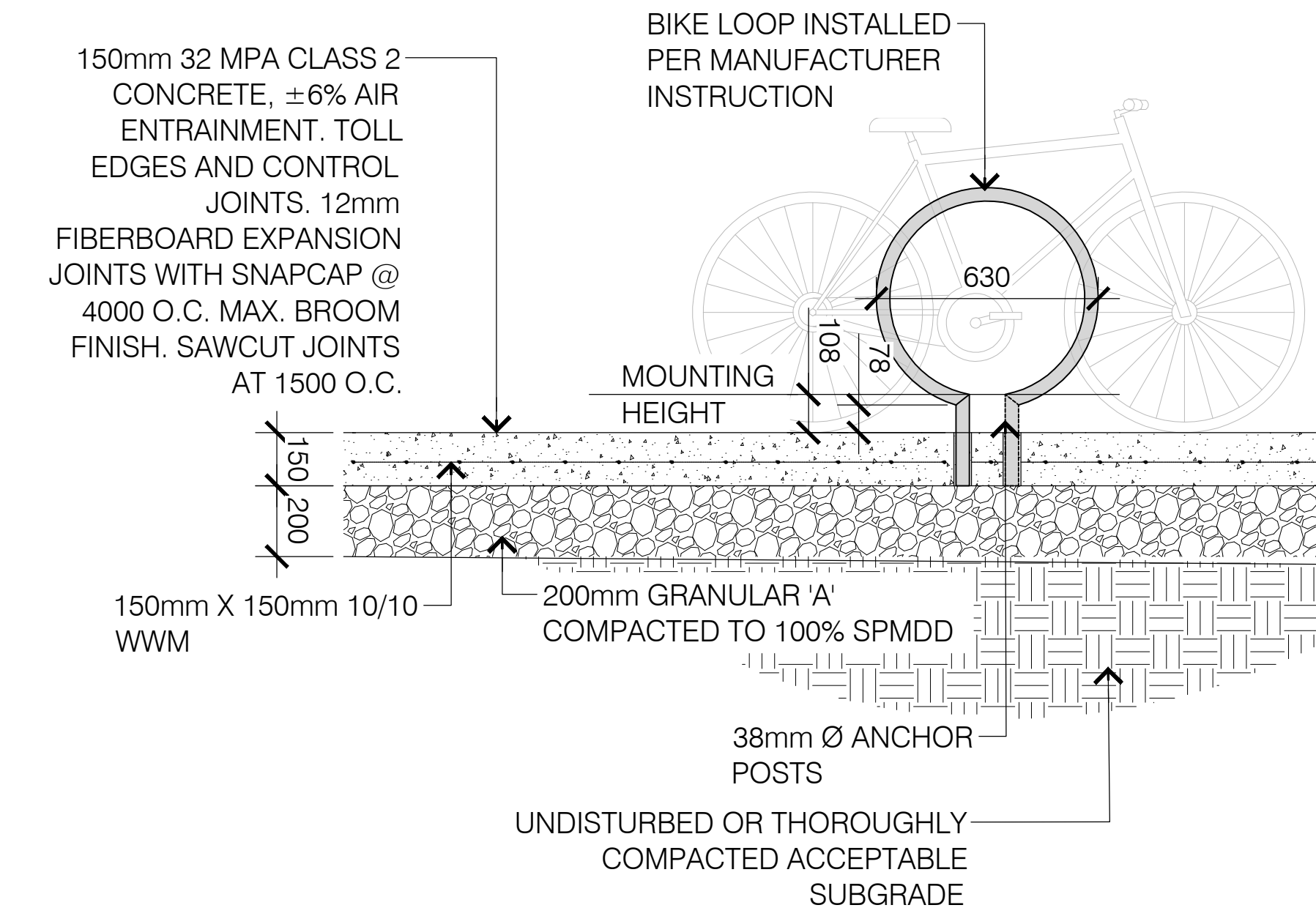
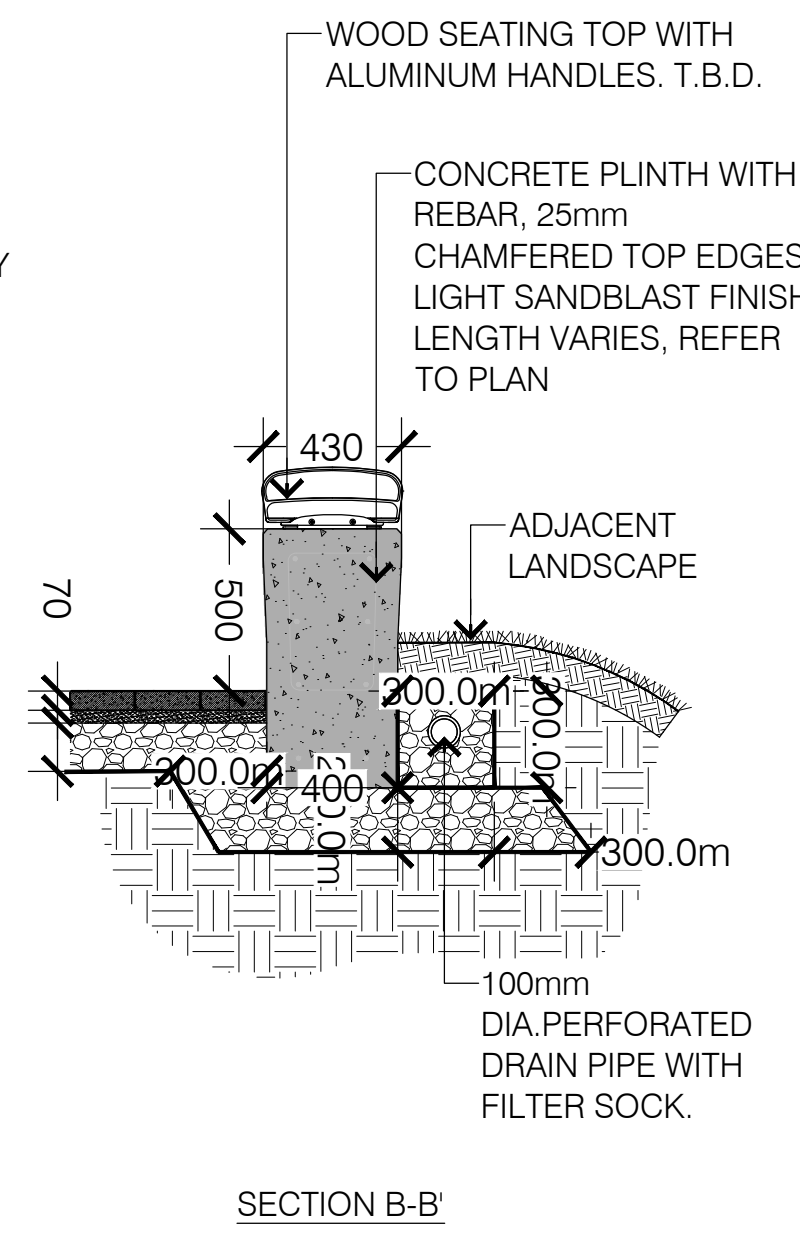
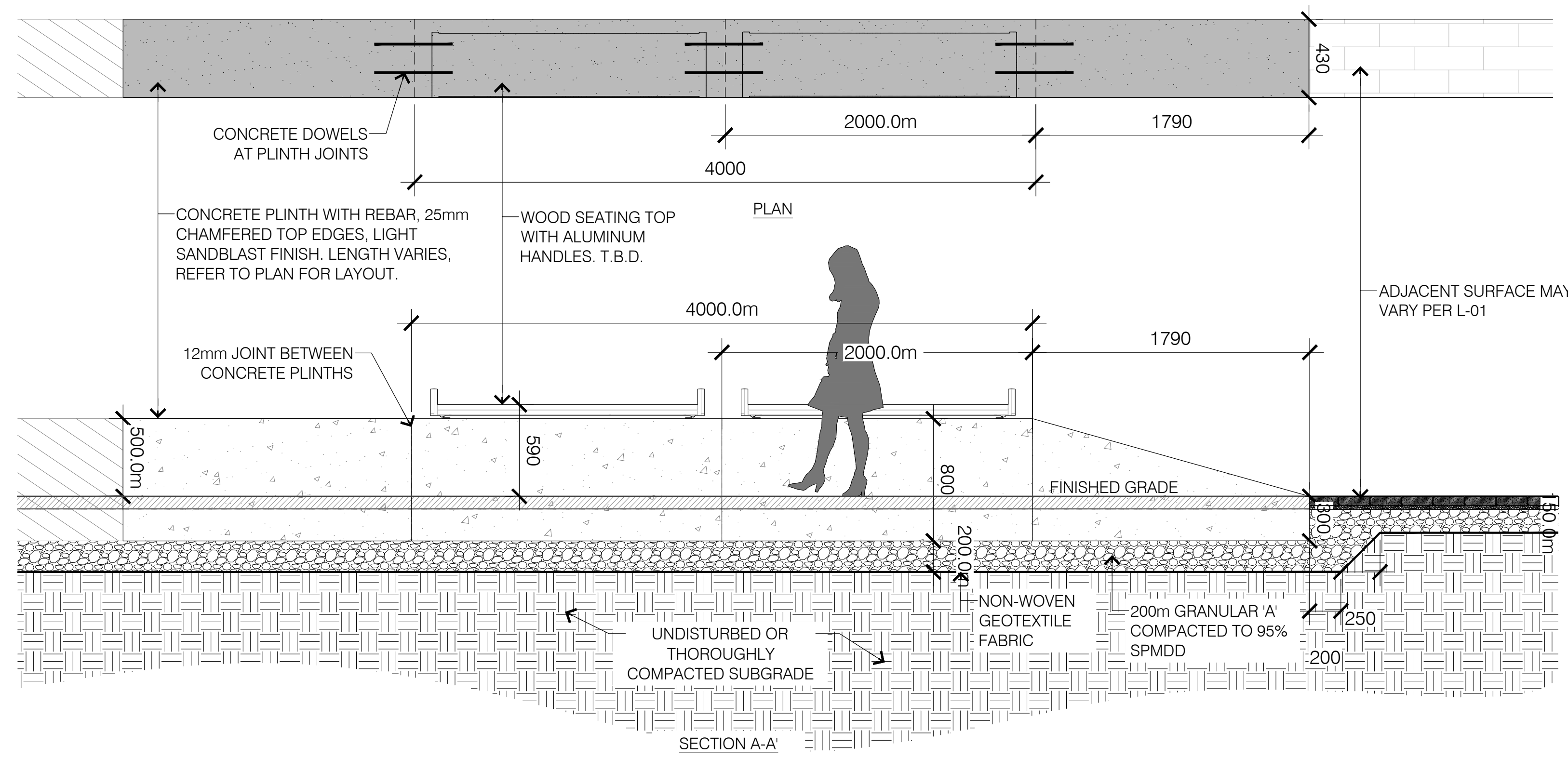
SCALE: AS NOTED

DRAWN BY: CN/EL

LA PROJECT NO.: 21792-1

L-02

D07-12-17-0063 #17421



1 L-03 CONCRETE KNEE WALL (LENGTHS VARY PER L-01 PLAN)

1:30

2 L-03 BIKE RACKS IN CONCRETE

1:20



- L1-01 GENERAL NOTES**
- All general site information and conditions compiled from architect's and engineer's plans and surveys.
 - Do not scale this drawing.
 - Report any discrepancies prior to commencing work. No responsibility is born by the Landscape Architect for unknown subsurface conditions.
 - Reinstate all areas and items damaged as a result of construction activities to the satisfaction of the Landscape Architect.
 - Drawing may not be used for construction until signed by Landscape Architect as issued for construction.
 - The accuracy of the position of utilities is not guaranteed.
 - Individual utility co. must be contacted for confirmation of utility existence and location prior to digging.
 - This drawing is an instrument of service and requires the permission of the Landscape Architect for use. Copyright is reserved by the Landscape Architect, David M. Lashley.
- L1-01 LANDSCAPE NOTES**
- Plant material shall be No. 1 Grade and shall comply with the Metric Guide Specifications for Nursery stock (latest edition), published by Canadian Nursery Trades Association.
 - Plant substitutions shall not be permitted unless approved by the Landscape Architect.
 - Obtain approval of planting prior to digging.
 - Topsoil shall be garden silt mixture sandy loam with min. 5% organic matter and peat moss added at ratio of 1:10, topsoil to be approved by Landscape Architect.

NO.	DATE	DESCRIPTION
7	2021/12/17	RE-ISSUED FOR SITE PLAN CONTROL
6	2021/12/10	RE-ISSUED FOR SITE PLAN CONTROL
5	2021/09/17	RE-ISSUED FOR SITE PLAN CONTROL
4	2021/07/23	RE-ISSUED FOR SITE PLAN CONTROL
3	2021/04/30	ISSUED FOR SITE PLAN APPLICATION
2	2021/04/14	FOR REVIEW
1	2021/03/08	ISSUED FOR UDRP

SEAL: NORTH:

LASHLEY + ASSOCIATES
LANDSCAPE ARCHITECTURE AND SITE ENGINEERING
200 860 GLADSTONE AVENUE
OTTAWA, ON K1Y 2B8
T 613 238 8870
F 613 238 4001
W LashleyA.com
E info@LashleyA.com

CONSULTANT:
HOBIN ARCHITECTURE

PROJECT:
100 BAYSHORE 'LOT B'
WOODRIDGE CRESCENT
NEPEAN, ONTARIO

DRAWING TITLE:
DETAILS

DATE: 2021/04/14 DRAWING NO.:
SCALE: AS NOTED
DRAWN BY: CN/EL
LA PROJECT NO. 21792-1 **L-03**

D07-12-17-0063 #17421