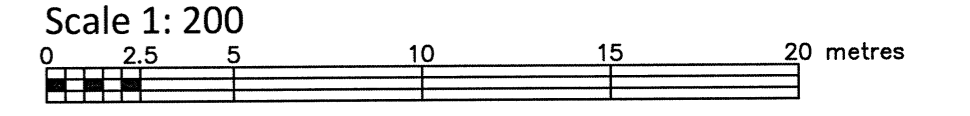


PART OF BLOCKS A AND I REGISTERED PLAN 465465

CITY OF OTTAWA FARLEY, SMITH & DENIS SURVEYING LTD. 2021



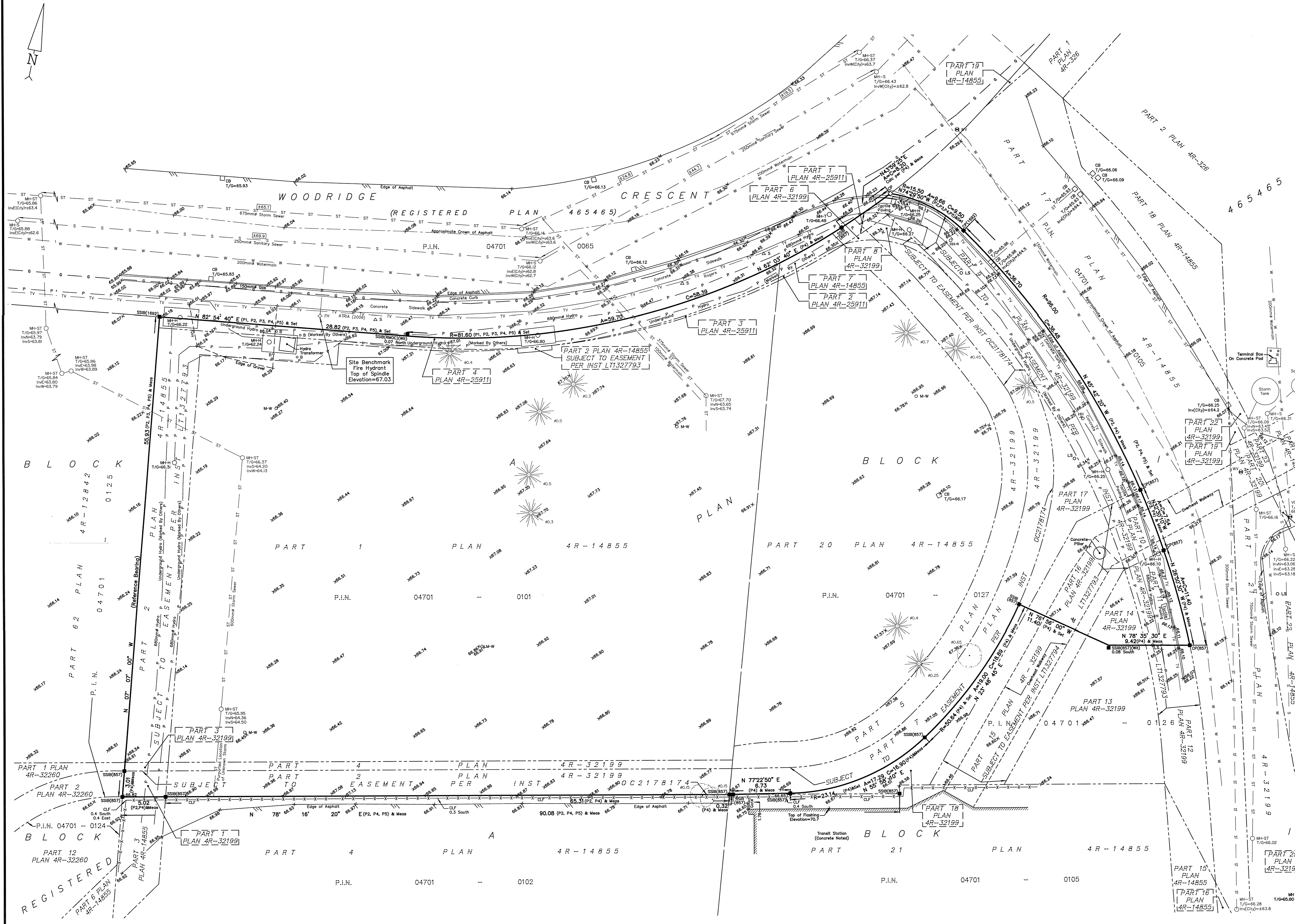
Metric Note Distances and coordinates on this plan are in metres and can be converted to feet by dividing by 0.3048.

Bearing Note Distances shown on this plan are ground distances and can be converted to grid distances by multiplying by the combined scale factor of 0.99996.

Elevation Notes 1. Elevations shown are geodetic and are referred to Geodetic Datum CGVD-1928-1978. 2. It is the responsibility of the user of this information to verify that the job benchmark has not been altered or disturbed and that its relative elevation and description agrees with the information shown on this drawing.

Utility Notes 1. This drawing cannot be accepted as acknowledging all of the utilities and it will be the responsibility of the user to contact the respective utility authorities for confirmation. 2. Only visible surface utilities were located. 3. Underground utility data derived from City of Ottawa utility sheet references: H-02-C, 9118p&p2, 9118p&p3, 9961-017, 9961-029, 9961-030, 1144plan3 & 1737p&p05. 4. Sanitary and storm sewer grades and inverts were compiled from: City of Ottawa Utility Plans. 5. A field location of underground plant by the pertinent utility authority is mandatory before any work involving breaking ground, probing, excavating, etc.

Notes & Legend Denotes Survey Monument Planted, Survey Monument Found, Standard Iron Bar, Short Standard Iron Bar, Iron Bar, Witness, Meas, Registered Plan 465465, Plan 4R-14855, Plan 4R-25911, Plan by (1692) dated June 6, 2003 (Job No. 365-14), Maintenance Hole (Storm), Maintenance Hole (Sanitary), Maintenance Hole (Traffic), Maintenance Hole (Hydro), Maintenance Hole (Unidentified), Valve Chamber (Watermain), Undergound Storm Sewer, Undergound Sanitary Sewer, Undergound Hydro, Undergound Gas, Undergound Cable, Light Standard, Catch Basin, Handhole, Fire Hydrant, Water Valve, Bollard, Sign, Monitoring Well, Diameter, Chain Link Fence, Invert, Invert from City of Ottawa Utility Plans, Top of Grate, Centreline, Location of Elevations, Top of Concrete Curb Elevation, Property Line.



WARNING NO PERSON MAY COPY, REPRODUCE, DISTRIBUTE OR ALTER THIS PLAN IN WHOLE OR IN PART WITHOUT THE WRITTEN PERMISSION OF FARLEY, SMITH & DENIS SURVEYING LTD. © FARLEY, SMITH & DENIS SURVEYING LTD., 2021.

Table with 2 columns: Denotes (symbols) and descriptions (e.g., Survey Monument Planted, Undergound Storm Sewer, etc.).

Surveyor's Certificate I certify that: 1. This survey and plan are correct and in accordance with the Survey Act, the Surveyors Act and the Regulations made under them. 2. The survey was completed on the 7th day of May, 2021. Date: May 13/21 Daniel Robinson Ontario Land Surveyor

ASSOCIATION OF ONTARIO LAND SURVEYORS PLAN SUBMISSION FORM V-10959. Includes logo and text: THIS PLAN IS NOT VALID UNLESS IT IS AN UNBOSSSED ORIGINAL COPY ISSUED BY THE SURVEYOR in accordance with Regulation 1026, Section 23 (3).

FARLEY, SMITH & DENIS SURVEYING LTD.

ONTARIO LAND SURVEYORS CANADA LAND SURVEYORS 190 COLONNADE ROAD, OTTAWA, ONTARIO K2E 7J5 TEL. (613) 727-8226 FAX. (613) 727-1826