

PROJECT TEAM

ARCHITECT
HOBIN ARCHITECTURE
PATRICK BISSON
F 416.228.7200

PLANNING
Lloyd Phillips and Associates Ltd.
Lloyd Phillips
F 416.226.5373

CIVIL
WSP
STEPHEN MCCAUGHEY
F 416.690.3955

LANDSCAPE ARCHITECT
CJM LANDSCAPE ARCHITECTS LTD.
F 416.729.4536

TRANSPORTATION
IBI GROUP
DAVID HOOK
F 416.225.1311 ext. 64029

ENVIRONMENTAL
GRADIENT WIND ENGINEERING
JOSHUA FOSTER
F 416.584.9634

LEGEND

- AF ALUMINUM FLASHING
- AP-1 ALUMINUM PANEL 1
- AP-2 ALUMINUM PANEL 2
- MV-1 MAGNARY VENEER 1
- MV-2 MAGNARY VENEER 2
- GR GLASS RAILING
- MS-1 METAL SIDING-1
- MS-2 METAL SIDING-2
- MS-3 METAL SIDING-3
- PPMS-1 PRE-FINISHED METAL SIDING-1
- PPWS PRE-FINISHED WOOD SIDING
- SP SPANREL PANEL
- STG STEEL COLUMN
- VB VISION GLASS

BIRD FRIENDLY GLASS - AS PER CITY BIRD SAFE GUIDELINES
GUIDELINE 2: Treatments to be applied to a minimum of 90% of the glass within the first 16 metres of height.
1. GLASS SPECIFIED TO BE LOW REFLECTIVITY ON LEV. 1-4
2. GLASS FRIT FOR ALL BALCONY RAILINGS ON LEV. 4
3. GLASS FRIT FOR ALL BALCONY RAILINGS ON ROOF TERRACE LEVELS

no.	date	revision
3	21.04.20	ISSUED FOR S.P.A
2	20.07.24	ISSUED FOR REZONING - REV 3
1	19.02.20	ISSUED FOR REZONING

It is the responsibility of the appropriate contractor to check and verify all dimensions on site and report all errors and/or omissions to the architect.

All contractors must comply with all pertinent codes and by-laws.

Do not scale drawings.

This drawing may not be used for construction until signed.

Copyright reserved.

Hobin Architecture
Incorporated
63 Parniss Street
Ottawa, Ontario
Canada K1S 3K7
T: 613 228 7200
F: 613 225 2005
E: info@hobin.com
hobin.com



HOBIN
ARCHITECTURE

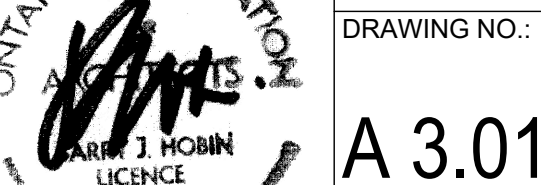
PROJECT LOCATION:
100 BAYSHORE LOT "B"

WOODRIDGE CRESCENT

DRAWING TITLE:
ELEVATIONS

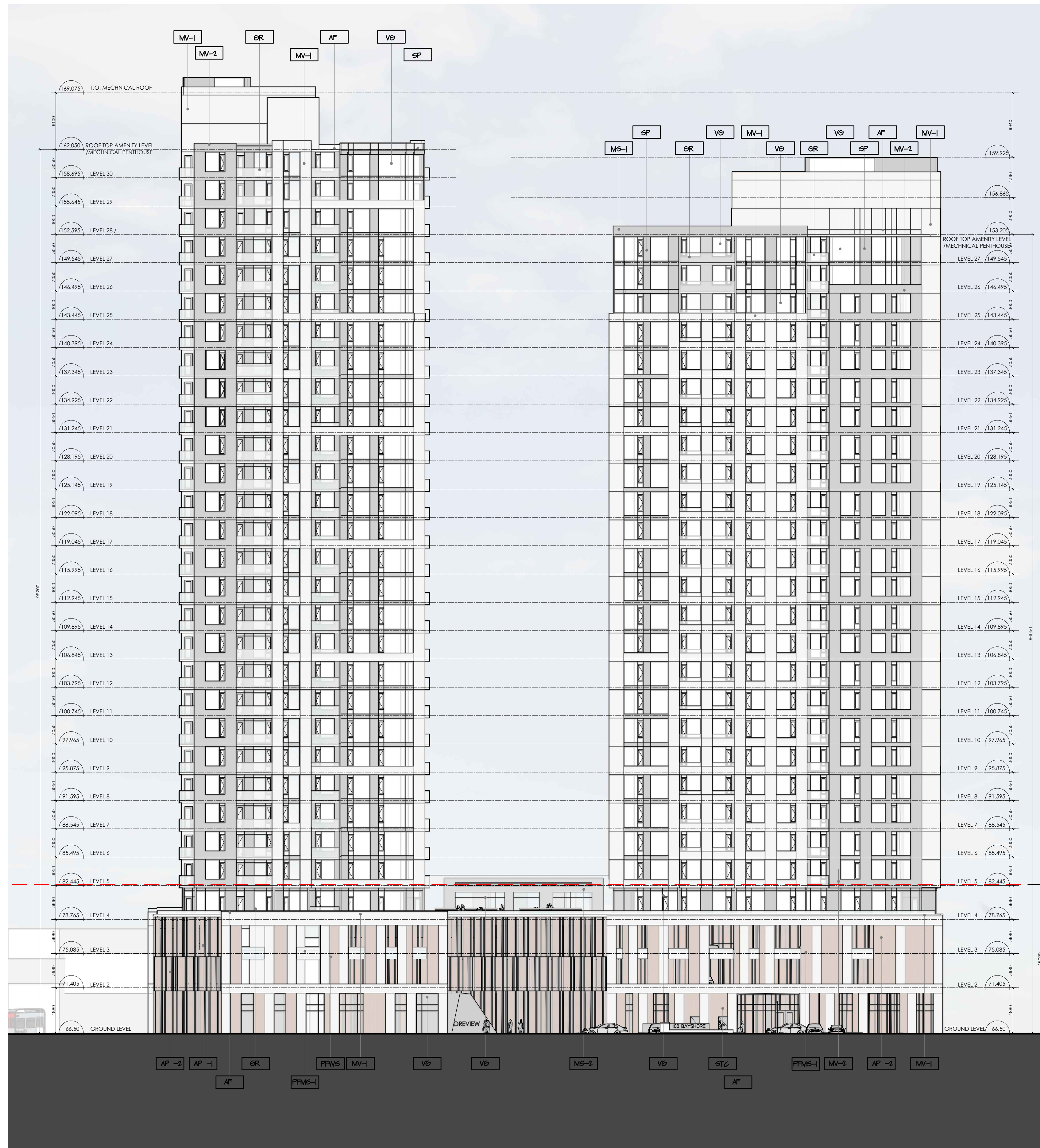
DRAWN BY: PB **DATE:** 18.12.20 **SCALE:** 1:250

PROJECT: 1837 **DRAWING NO.:** A3.01



ONTARIO ASSOCIATION OF ARCHITECTS
JAMES HOBAN LICENCE 3049

REVISION NO.:



1 NORTH ELEVATION
A3.01 1:250



2 SOUTH ELEVATION
A3.01 1:250

PROJECT TEAM

ARCHITECT
HOBIN ARCHITECTURE
PATRICK BISSON
T 416.228.7200

PLANNING
Lloyd Phillips and Associates Ltd.
Lloyd Phillips
T 416.226.5373

CIVIL
WSP
STEPHEN MCCALGHEY
T 416.690.3955

LANDSCAPE ARCHITECT
CSW LANDSCAPE ARCHITECTS LTD.
T 416.229.4536

TRANSPORTATION
IBI GROUP
DAVID HOOK
T 416.226.1311 ext: 64029

ENVIRONMENTAL
GRADIENT WIND ENGINEERING
JOSHUA FOSTER
T 416.856.9634

LEGEND

- AL ALUMINUM FLASHING
- AP -1 ALUMINUM PANEL 1
- AP -2 ALUMINUM PANEL 2
- MV-1 MASONRY VENEER 1
- MV-2 MASONRY VENEER 2
- GR GLASS RAILING
- MS-1 METAL SIDING-1
- MS-2 METAL SIDING-2
- MS-3 METAL SIDING-3
- PTMS-1 PRE-FINISHED METAL SIDING-1
- PTWS PRE-FINISHED WOOD SIDING
- SP SPANREL PANEL
- STG STEEL COLUMN
- VG VISION GLASS

BIRD FRIENDLY GLASS - AS PER CITY BIRD SAFE GUIDELINES
GUIDELINE 2 - Treatments to be applied to a minimum of 90% of the glass within the first 16 metres of height
1. GLASS SPECIFIED TO BE LOW REFLECTIVITY ON LEV. 1-4
2. GLASS FRIT FOR ALL BALCONY RAILINGS ON LEV. 4
3. GLASS FRIT FOR ALL BALCONY RAILINGS ON ROOF TERRACE LEVELS

3 21.04.20 ISSUED FOR S.P.A

2 20.07.24 ISSUED FOR REZONING - REV 3

1 19.02.20 ISSUED FOR REZONING

no. date revision

It is the responsibility of the appropriate contractor to check and verify all dimensions on site and report all errors and/or omissions to the architect.

All contractors must comply with all pertinent codes and by-laws.

Do not scale drawings.
This drawing may not be used for construction until signed.

Copyright reserved.

Hobin Architecture Incorporated
63 Pamela Street
Ottawa, Ontario
Canada K1S 3K7
T: 613 228 7200
F: 613 226 2005
E: info@hobinarc.com
hobinarc.com
HOBIN
ARCHITECTURE

PROJECT LOCATION:

100 BAYSHORE LOT "B"

WOODRIDGE CRESCENT

DRAWING TITLE:

ELEVATIONS

DRAWN BY: DATE: SCALE:

pb 19.12.20 1:250

PROJECT:

1837

DRAWING NO.:

A 3.02

REVISION NO.:



1 WEST ELEVATION
1:250



2 EAST TOWER - WEST ELEVATION
1:250

PROJECT TEAM

ARCHITECT
HOBIN ARCHITECTURE
PATRICK BISSON
T: 613.238.7200

PLANNING
Lloyd Phillips and Associates Ltd.
Lloyd Phillips
T: 613.236.5373

CIVIL
WSP
STEPHEN MCCAUGHEY
T: 613.690.3955

LANDSCAPE ARCHITECT
CSW LANDSCAPE ARCHITECTS LTD.
T: 613.729.4536

TRANSPORTATION
IBI GROUP
DAVID HOOK
T: 613.225.1311 ext: 64029

ENVIRONMENTAL
GRADIENT WIND ENGINEERING
JOSHUA FOSTER
T: 613.856.9634

LEGEND

- AP ALUMINUM FLASHING
- AP -1 ALUMINUM PANEL 1
- AP -2 ALUMINUM PANEL 2
- MV-1 MAGNARY VENEER 1
- MV-2 MAGNARY VENEER 2
- GR GLASS RAILING
- MS-1 METAL SIDING-1
- MS-2 METAL SIDING-2
- MS-3 METAL SIDING-3
- PTMS-1 PRE-FINISHED METAL SIDING -1
- PTWS PRE-FINISHED WOOD SIDING
- SP SPANREL PANEL
- STG STEEL COLUMN
- VB VISION GLASS

BIRD FRIENDLY GLASS - AS PER CITY BIRD SAFE GUIDELINES
GUIDELINE 2 - Treatments to be applied to a minimum of 90% of the glass within the first 16 metres of height
1. GLASS SPECIFIED TO BE LOW REFLECTIVITY ON LEV. 1-4
2. GLASS FRIT FOR ALL BALCONY RAILINGS ON LEV. 4
3. GLASS FRIT FOR ALL BALCONY RAILINGS ON ROOF TERRACE LEVELS

no.	date	revision
3	21.04.30	ISSUED FOR S.P.A
2	20.07.24	ISSUED FOR REZONING - REV 3
1	19.02.20	ISSUED FOR REZONING

It is the responsibility of the appropriate contractor to check and verify all dimensions on site and report all errors and/or omissions to the architect.

All contractors must comply with all pertinent codes and by-laws.
Do not scale drawings.

This drawing may not be used for construction until signed.

Copyright reserved.

Hobin Architecture Incorporated
63 Patricia Street
Ottawa, Ontario
Canada K1S 3K7
T: 613 238 7200
F: 613 235 2005
E: mail@hobinarc.com
hobinarc.com



HOBIN
ARCHITECTURE

PROJECT LOCATION:
100 BAYSHORE LOT "B"

WOODRIDGE CRESCENT

DRAWING TITLE:
ELEVATIONS

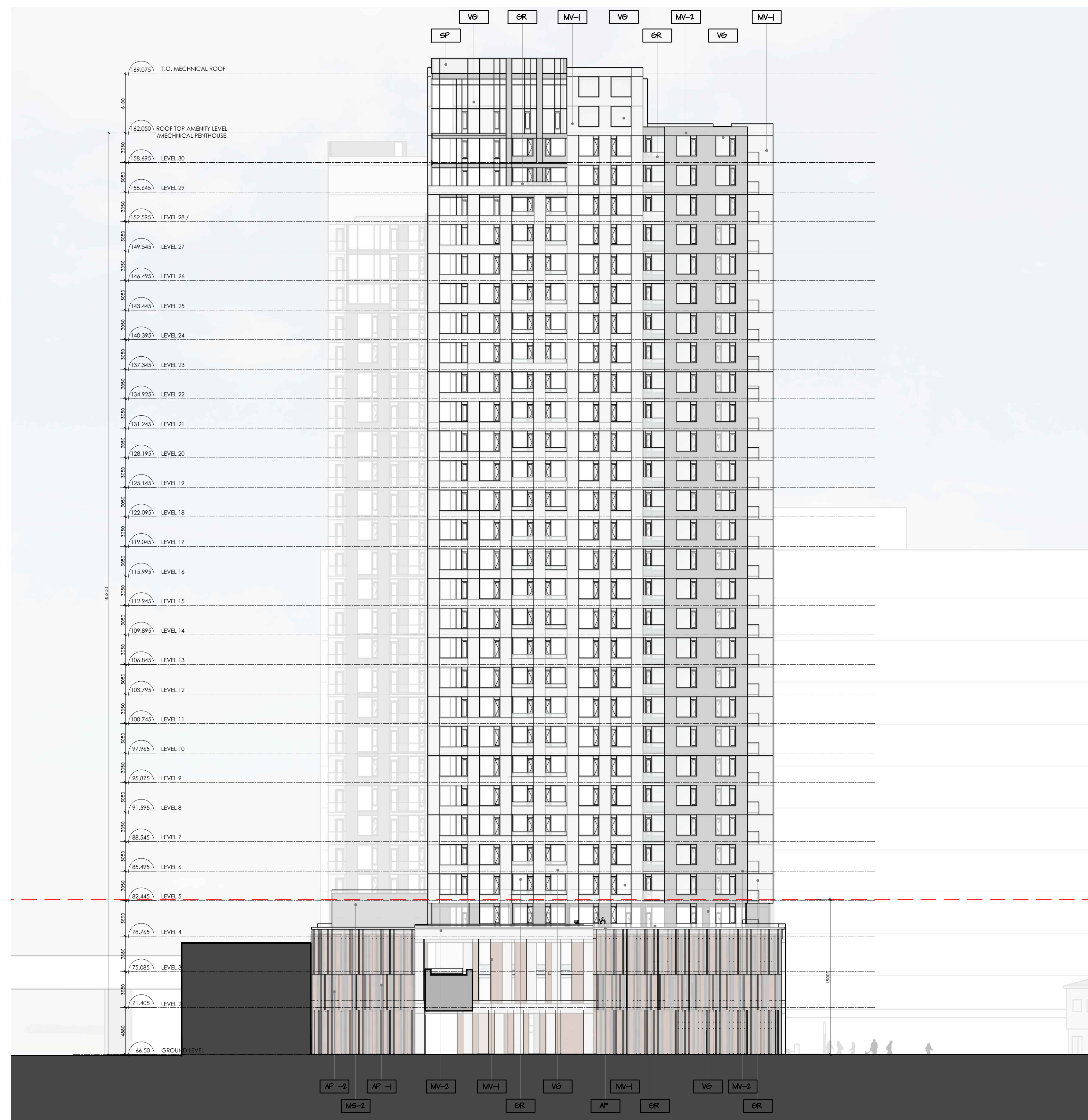
DRAWN BY: DATE: SCALE:
PB 18.12.20 1:250

PROJECT: DRAWING NO.:
1837 3049

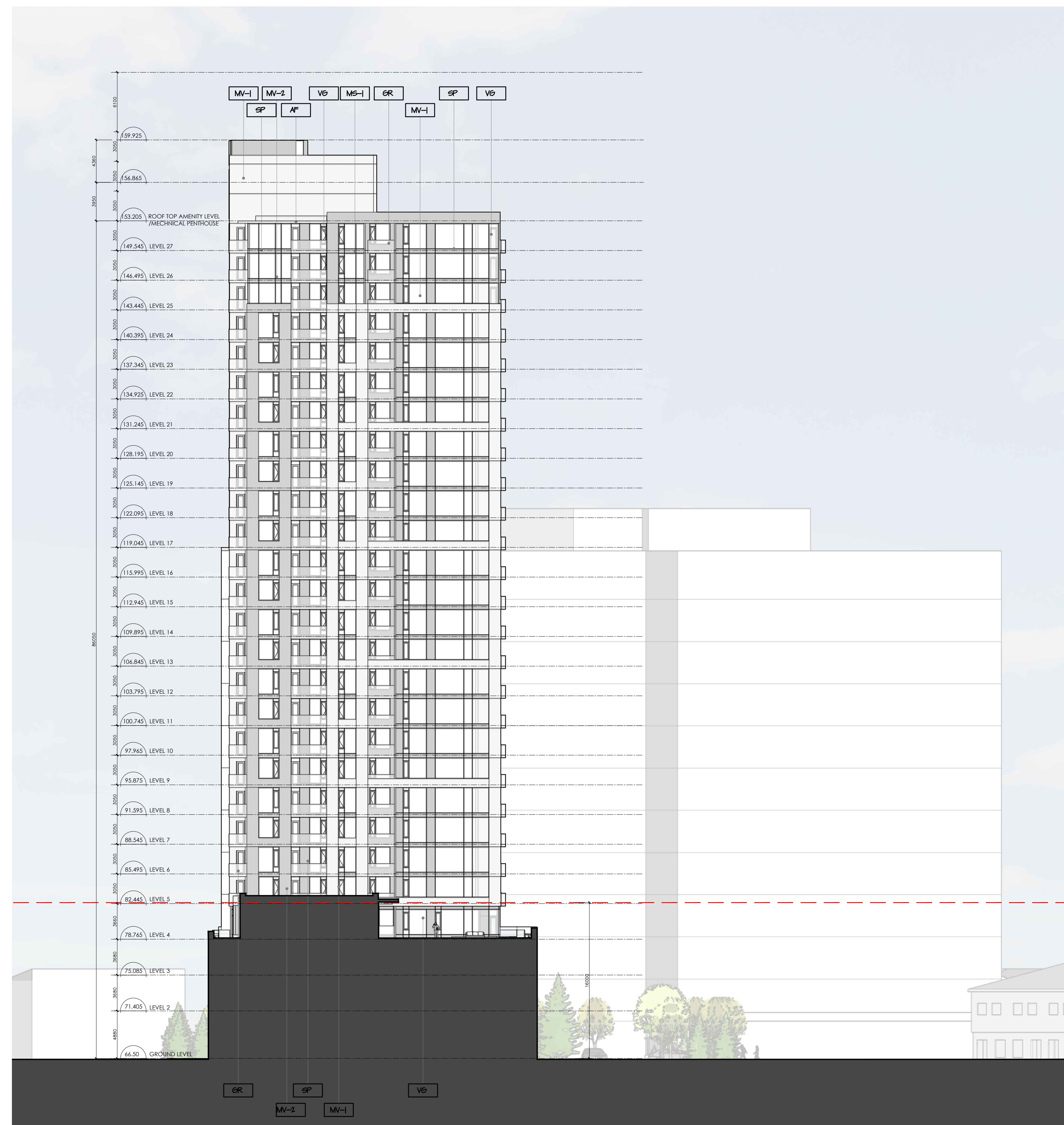
ONTARIO ASSOCIATION OF ARCHITECTS
JAMES J. HOBIN
LICENSE 3049

A 3.03

REVISION NO.:



1 EAST ELEVATION
1:250



2 EAST ELEVATION - WEST TOWER
1:250