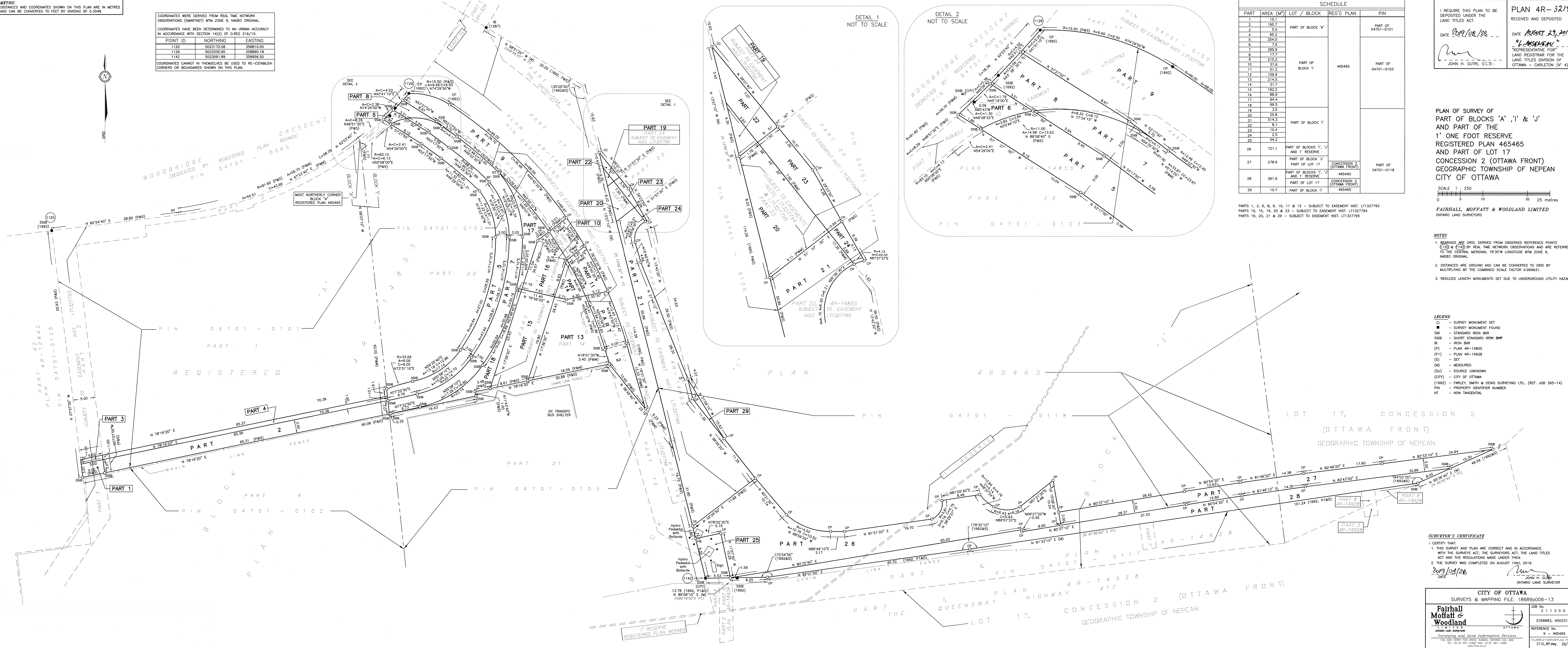


METRIC DISTANCES AND COORDINATES SHOWN ON THIS PLAN ARE IN METRES AND CAN BE CONVERTED TO FEET BY DIVIDING BY 0.3048

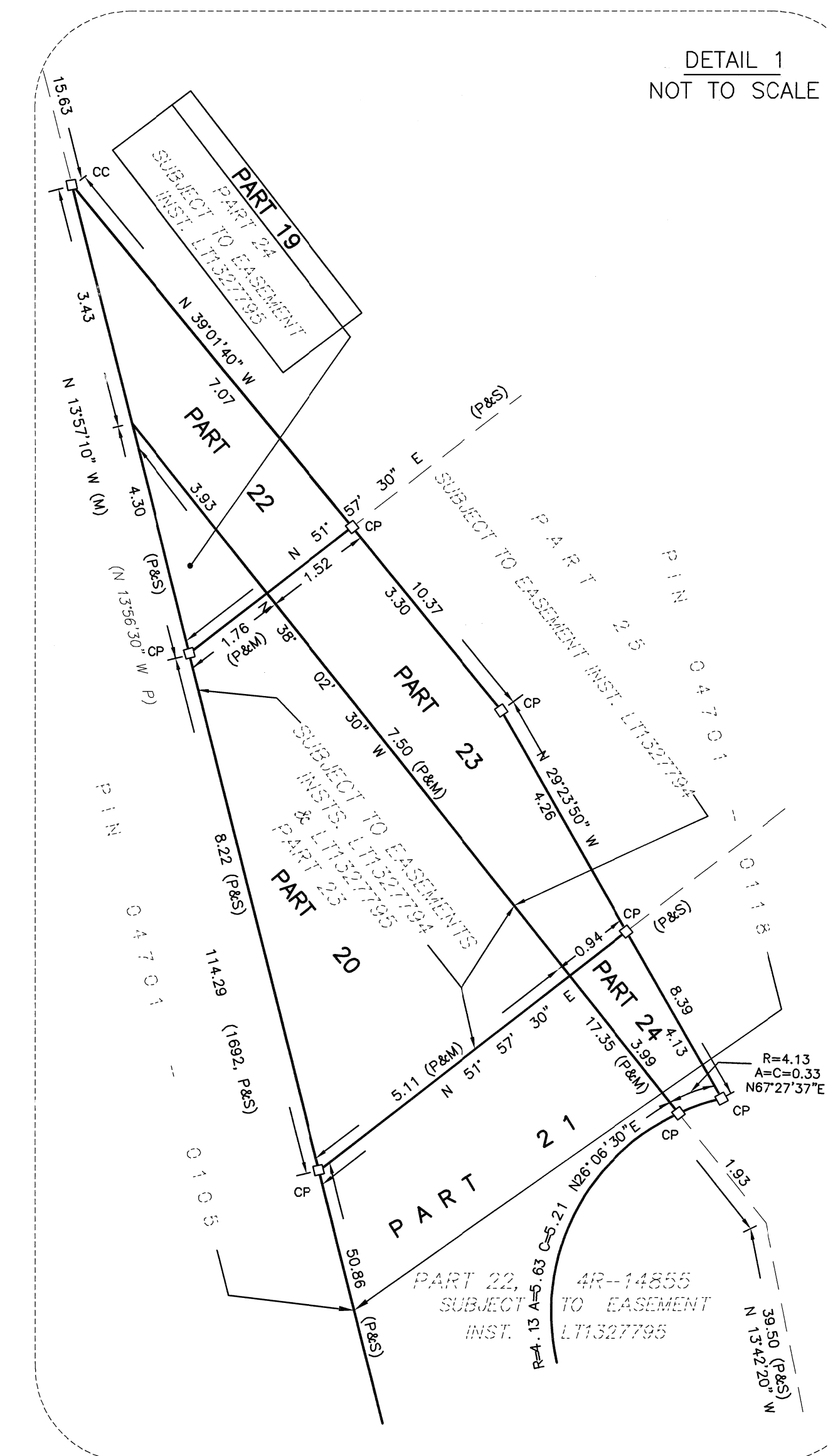
COORDINATES WERE DERIVED FROM REAL TIME NETWORK OBSERVATIONS (SMARTNET) MTM ZONE 9, NAD83 ORIGINAL. COORDINATES HAVE BEEN DETERMINED TO AN URBAN ACCURACY IN ACCORDANCE WITH SECTION 14(2) OF O. REG. 216/10.

POINT ID	NORTHING	EASTING
1120	5023170.08	358810.00
1129	5023200.95	358890.18
1142	5023091.89	358925.50

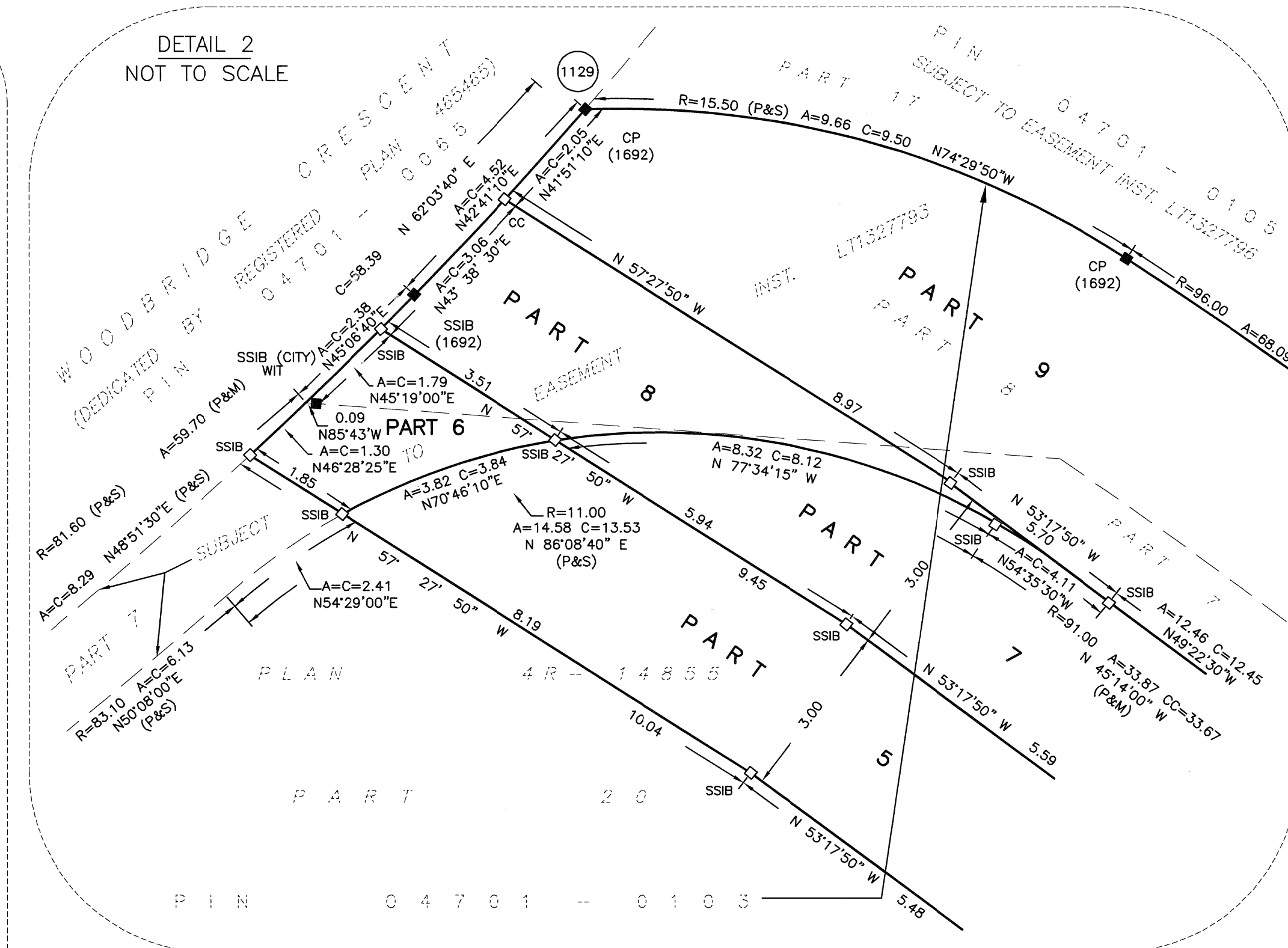
COORDINATES CANNOT IN THEMSELVES BE USED TO RE-ESTABLISH CORNERS OR BOUNDARIES SHOWN ON THIS PLAN.



DETAIL 1 NOT TO SCALE



DETAIL 2 NOT TO SCALE



SCHEDULE				
PART	AREA (M ²)	LOT / BLOCK	REG'D PLAN	PIN
1	15.1			
2	195.7			
3	5.0	PART OF BLOCK 'A'		PART OF 04701-0101
4	65.2			
5	254.0			
6	7.5			
7	265.9			
8	17.7			
9	215.2			
10	37.8	PART OF BLOCK 'I'	465465	PART OF 04701-0103
11	51.2			
12	109.9			
13	214.5			
14	31.7			
15	169.2			
16	88.9			
17	64.4			
18	89.5			
19	3.5			
20	25.8			
21	514.3	PART OF BLOCK 'J'		
22	8.1			
23	10.4			
24	2.5			
25	54.2			
26	721.1	PART OF BLOCKS 'Y', 'J' AND 'I' RESERVE		
27	278.6	PART OF BLOCK 'J' PART OF LOT 17	CONCESSION 2 (OTTAWA FRONT) 465465	PART OF 04701-0118
28	361.6	PART OF BLOCKS 'Y', 'J' AND 'I' RESERVE	CONCESSION 2 (OTTAWA FRONT) 465465	
29	10.7	PART OF BLOCK 'Y'	CONCESSION 2 (OTTAWA FRONT) 465465	

PARTS 1, 3, 6, 8, 9, 10, 11 & 12 - SUBJECT TO EASEMENT INST. L1327795
 PARTS 10, 15, 16, 20 & 23 - SUBJECT TO EASEMENT INST. L1327794
 PARTS 19, 20, 21 & 29 - SUBJECT TO EASEMENT INST. L1327795

I REQUIRE THIS PLAN TO BE DEPOSITED UNDER THE LAND TITLES ACT.
 DATE 2019/08/28
 DATE AUGUST 29, 2019
 JOHN H. GUTRI, O.L.S.
 REPRESENTATIVE FOR THE LAND REGISTRAR FOR THE LAND TITLES DIVISION OF OTTAWA - CARLETON (N° 4)

PLAN OF SURVEY OF PART OF BLOCKS 'A', 'I' & 'J' AND PART OF THE 1' ONE FOOT RESERVE REGISTERED PLAN 465465 AND PART OF LOT 17 CONCESSION 2 (OTTAWA FRONT) GEOGRAPHIC TOWNSHIP OF NEPEAN CITY OF OTTAWA



FAIRHALL, MOFFATT & WOODLAND LIMITED
 ONTARIO LAND SURVEYORS

- NOTES
- BEARINGS ARE GRID, DERIVED FROM OBSERVED REFERENCE POINTS (1120 & 1142) BY REAL TIME NETWORK OBSERVATIONS AND ARE REFERRED TO THE CENTRAL MERIDIAN, 76°30' WEST LONGITUDE MTM ZONE 9, NAD83 ORIGINAL.
 - DISTANCES ARE GROUND AND CAN BE CONVERTED TO GRID BY MULTIPLYING BY THE COMBINED SCALE FACTOR 0.999931.
 - REDUCED LENGTH MONUMENTS SET DUE TO UNDERGROUND UTILITY HAZARD.

- LEGEND
- - SURVEY MONUMENT SET
 - - SURVEY MONUMENT FOUND
 - - STANDARD IRON BAR
 - SSB - SHORT STANDARD IRON BAR
 - IB - IRON BAR
 - (P) - PLAN 4R-14855
 - (P1) - PLAN 4R-14928
 - (S) - SET
 - (M) - MEASURED
 - (SU) - SOURCE UNKNOWN
 - (CITY) - CITY OF OTTAWA
 - (1692) - FARLEY, SMITH & DENIS SURVEYING LTD., (REF. JOB 365-14)
 - PIN - PROPERTY IDENTIFIER NUMBER
 - NT - NON TANGENTIAL

SURVEYOR'S CERTIFICATE
 I CERTIFY THAT:
 1. THIS SURVEY AND PLAN ARE CORRECT AND IN ACCORDANCE WITH THE SURVEYS ACT, THE SURVEYORS ACT, THE LAND TITLES ACT AND THE REGULATIONS MADE UNDER THEM.
 2. THE SURVEY WAS COMPLETED ON AUGUST 14TH, 2019.
 DATE 2019/08/28
 JOHN H. GUTRI
 ONTARIO LAND SURVEYOR

CITY OF OTTAWA
 SURVEYS & MAPPING FILE: 18689p006-13
 JOB No: 211200
 E358983, N5023165
 REFERENCE No: 9 - 465465
 FAIRHALL MOFFATT & WOODLAND
 SURVEYING AND LAND INFORMATION SERVICES
 100-600 TERRACE ROAD, SUITE 200, OTTAWA, ONTARIO K2J 4S6
 TEL: (613) 961-2500 FAX: (613) 961-1495
 WWW.FMSO.CA