

PROJECT TEAM

ARCHITECT
HOBIN ARCHITECTURE
PATRICK BISSON
T 416.238.7200

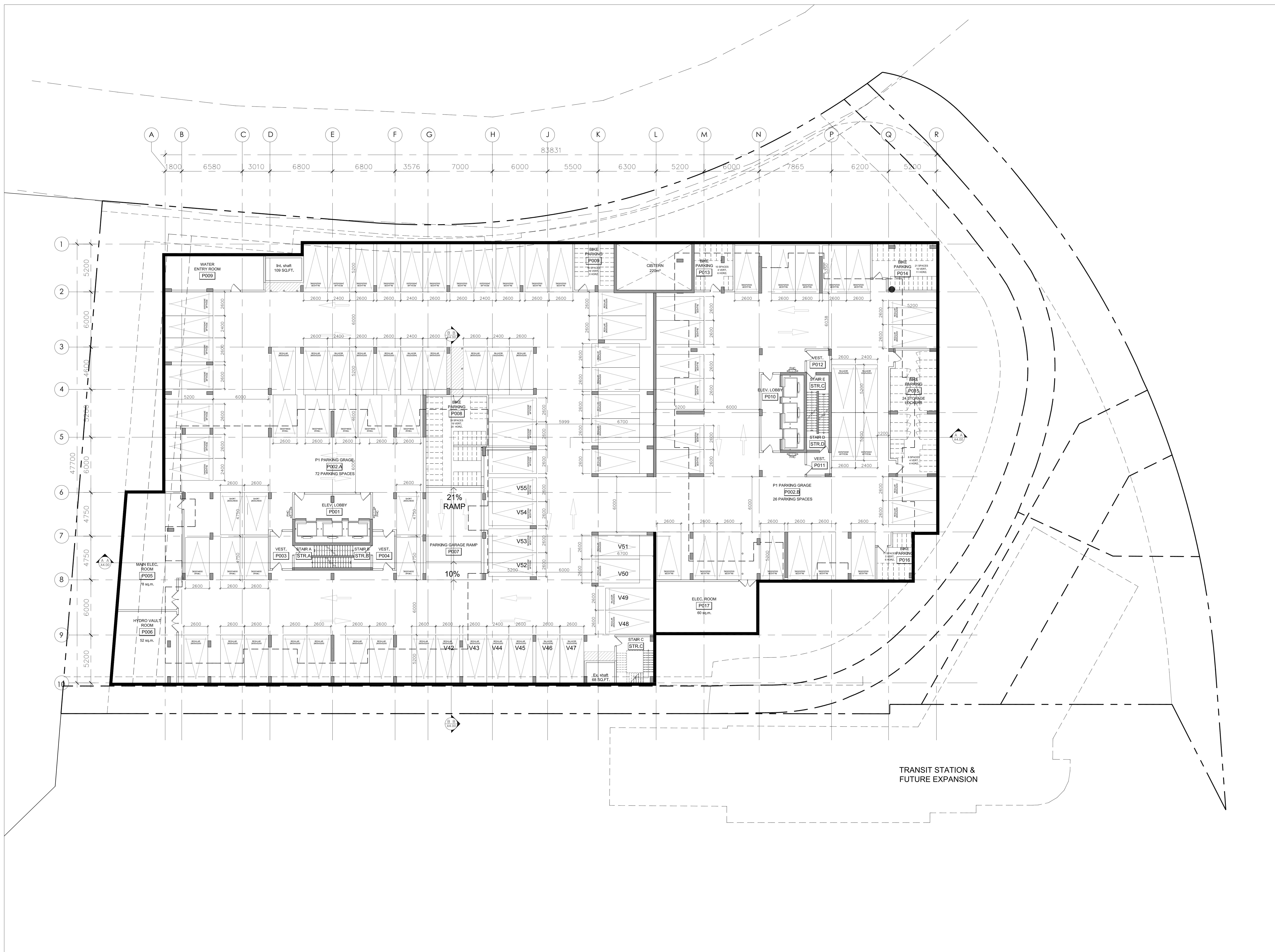
PLANNING & DESIGN
CHRISTINE MCCUAIG
416.850.8342

CIVIL
STEPHEN MCCAUGHEY
T 416.690.3955

LANDSCAPE ARCHITECT
LASHLEY & ASSOCIATES CORPORATION
ERIC CARREON
T 416.233.8579 X102

TRANSPORTATION
BI GROUP
DAVID HOOK
T 416.225.1311 ext: 44029

ENVIRONMENTAL
GRADIENT WIND ENGINEERING
JOSHUA FOSTER
T 416.436.6434



no.	date	revision
4	21.09.17	ISSUED FOR S.P.A. RESUB #2
3	21.07.23	ISSUED FOR S.P.A. RESUB #1
2	21.04.30	ISSUED FOR S.P.A.
1	19.02.20	ISSUED FOR REZONING

It is the responsibility of the appropriate contractor to check and verify all dimensions on site and report all errors and/or omissions to the architect.

All contractors must comply with all pertinent codes and by-laws. Do not scale drawings.

This drawing may not be used for construction until signed. Copyright reserved.

Hobin Architecture Incorporated
63 Pamela Street
Ottawa, Ontario
Canada K1S 9K7
T: 613-239-7200
F: 613-235-2005
E: mail@hobinarc.com
hobinarc.com



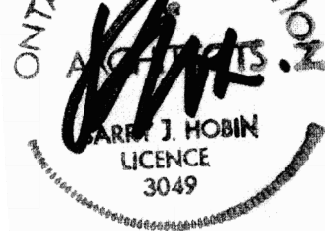
HOBIN
ARCHITECTURE

PROJECT LOCATION:
100 BAYSHORE LOT "B"
WOODRIDGE CRESCENT

DRAWING TITLE:
**FLOOR PLANS - PHASE 2
PARKING LEVEL - P1**

DRAWN BY: DATE: SCALE:
PB 18.12.20 1:150

PROJECT: DRAWING NO.:
1837



A 2.01

REVISION NO.:
LICENCE 3049