

APPROVED UNDER SECTION 51 OF THE PLANNING ACT BY THE CITY OF OTTAWA THIS 3 DAY OF November 2015.

MICHAEL MIZZI, M.C.I.P., R.P.P., ACTING GENERAL MANAGER
PLANNING AND GROWTH MANAGEMENT DEPARTMENT
PLANNING AND INFRASTRUCTURE PORTFOLIO
CITY OF OTTAWA

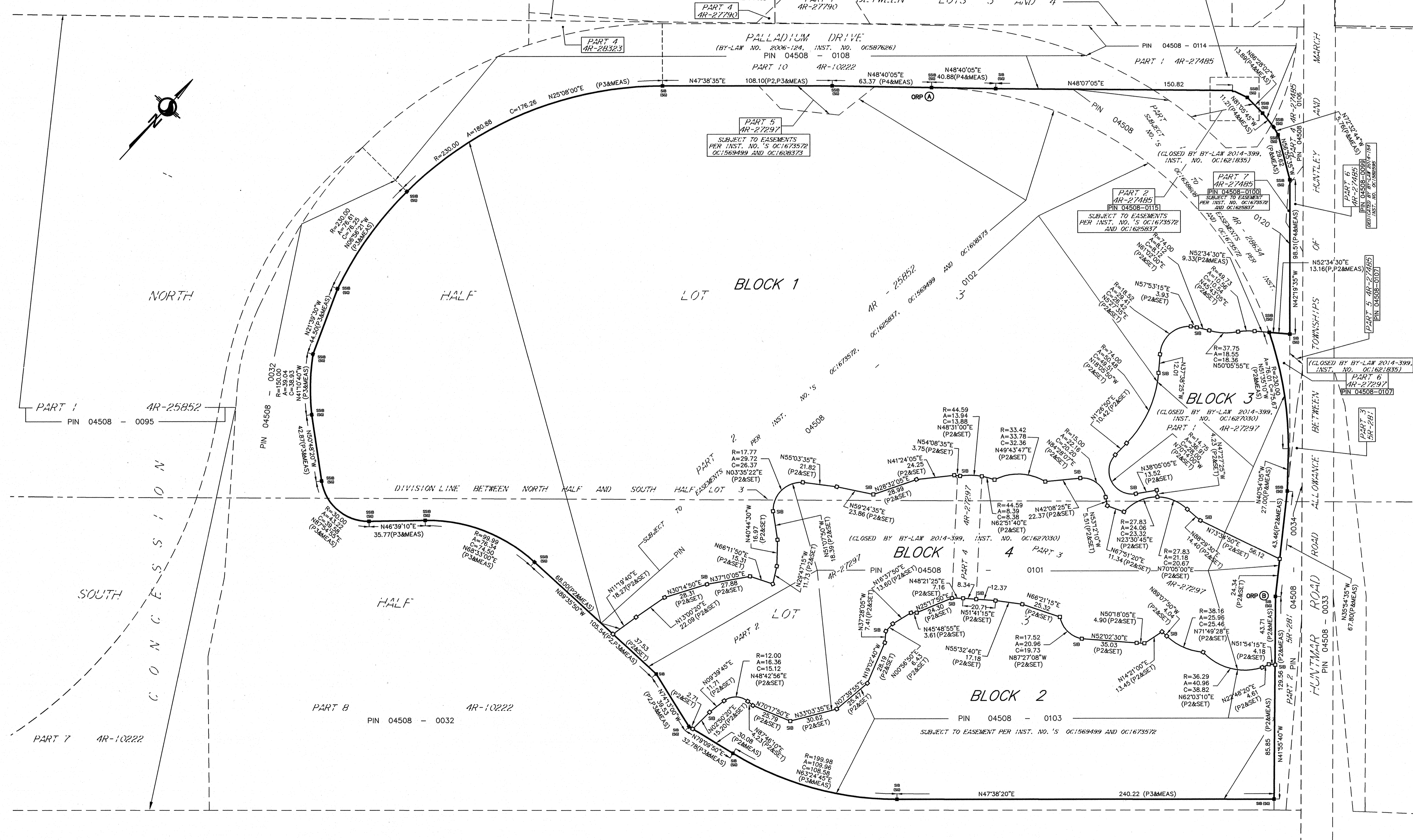
BLOCK 1 COMPRISES ALL OF PIN 04508-0102, 04508-0120, 04508-0100, 04508-0115.
BLOCK 2 COMPRISES ALL OF PIN 04508-0103.
BLOCKS 3 AND 4 COMPRISES ALL OF PIN 04508-0101.
BLOCK 1 IS SUBJECT TO EASEMENT PER INST. NO.'S OC1673572, OC1628637, OC1669499, OC1608375 & OC1638608.
BLOCK 2 IS SUBJECT TO EASEMENT PER INST. NO.'S OC1569499 & OC1673572.

CERTIFICATE OF REGISTRATION
PLAN 4M-1554

I CERTIFY THAT THIS PLAN IS REGISTERED IN THE LAND REGISTRY OFFICE FOR THE LAND TITLES DIVISION OF OTTAWA ON 04 AT 0 O'CLOCK ON THE 2 DAY OF February, 2016 AND ENTERED IN THE PARCEL REGISTER FOR PROPERTY IDENTIFIER 04508-0102, 04508-0101, 04508-0102, 04508-0103, 04508-0115 and 04508-0120 AND THE REQUIRED CONSENTS ARE REGISTERED AS PLAN DOCUMENT NUMBER 00176406.

F. Lamont
REPRESENTATIVE FOR THE LAND REGISTRAR

THIS PLAN COMPRISES ALL THE LAND IDENTIFIED BY ALL OF PIN 04508-0100, ALL OF PIN 04508-0101, ALL OF PIN 04508-0102, ALL OF PIN 04508-0103, ALL OF PIN 04508-0120 AND ALL OF PIN 04508-0115.



PLAN OF SUBDIVISION of
PART OF LOT 3
CONCESSION 1
(PART AS CLOSED BY BY-LAWS
OC162835 AND OC1627030)
GEOGRAPHIC TOWNSHIP OF HUNTLEY
CITY OF OTTAWA

Scale 1 : 1250
50 37.5 25 12.5 0 25 50 Metres

METRIC CONVERSION
DISTANCES AND COORDINATES SHOWN ON THIS PLAN ARE IN METRES AND CAN BE CONVERTED TO FEET BY DIVIDING BY 0.3048

GRID SCALE CONVERSION
DISTANCES ARE GROUND AND CAN BE CONVERTED TO GRID BY MULTIPLYING BY THE COMBINED SCALE FACTOR OF 0.999914.

BEARING NOTE
BEARINGS HEREON ARE GRID BEARINGS DERIVED FROM THE CAN-NET VRS NETWORK AND ARE REFERRED TO THE CENTRAL MERIDIAN 76° 30' WEST LONGITUDE OF THE 3° MTM ANTARIO COORDINATE SYSTEM, NAD83 (ORIGINAL) ZONE 9.

OBSERVED REFERENCE POINTS DERIVED FROM GPS OBSERVATIONS USING THE CAN-NET VIRTUAL REFERENCE STATION NETWORK:
MTM ZONE 9, NAD83 (ORIGINAL)

COORDINATES TO URBAN ACCURACY PER SEC. 14(2) OF O.REG. 216/10	ORP ID	NORTHING	EASTING
	Ⓐ	5017879.38	348879.92
	Ⓑ	5017841.37	349221.03

COORDINATES CANNOT, IN THEMSELVES, BE USED TO RE-ESTABLISH CORNERS OR BOUNDARIES SHOWN ON THIS PLAN.

SURVEYOR'S CERTIFICATE

I CERTIFY THAT:

- THIS SURVEY AND PLAN ARE CORRECT AND IN ACCORDANCE WITH THE SURVEYS ACT, THE SURVEYORS ACT AND THE LAND TITLES ACT AND THE REGULATIONS MADE UNDER THEM.
- THE SURVEY WAS COMPLETED ON THE 29th DAY OF JANUARY, 2015.

June 16/15
DATE

BRIAN J. WEBSTER
ONTARIO LAND SURVEYOR

OWNER'S CERTIFICATE

THIS IS TO CERTIFY THAT:

- ALL OF BLOCKS 1 AND 2 HAVE BEEN LAID OUT IN ACCORDANCE WITH OUR INSTRUCTIONS.

RIOCAN HOLDINGS (TV) INC. (50% INT.) 1633272 ALBERTA ULC (50% INT.)

DATED: July 7/15

Jonathan Gitlin
SENIOR VICE-PRESIDENT OF INVESTMENT

FRANK C. MARCHESIO JR.
EXECUTIVE VICE-PRESIDENT

I HAVE THE AUTHORITY TO BIND THE CORPORATION

OWNER'S CERTIFICATE

THIS IS TO CERTIFY THAT:

- ALL OF BLOCKS 3 AND 4 HAVE BEEN LAID OUT IN ACCORDANCE WITH OUR INSTRUCTIONS.

DATED: 13 JAN 2016

JIM WATSON
CITY OF OTTAWA
(MAYOR)

JESLIE DONNELLY
CITY OF OTTAWA
(DEPUTY CITY CLERK)

I HAVE THE AUTHORITY TO BIND THE CORPORATION

LEGEND

SYMBOL	DENOTES	FOUND MONUMENTS
IB	IRON BAR	SET MONUMENTS
IB@	ROUND IRON BAR	ROUND IRON BAR
SIB	STANDARD IRON BAR	STANDARD IRON BAR
SSIB	SHORT STANDARD IRON BAR	SHORT STANDARD IRON BAR
CP	CUT CROSS	CUT CROSS
CP	CONCRETE PIN	CONCRETE PIN
WIT	WITNESS	WITNESS
PIN	PROPERTY IDENTIFICATION NUMBER	PROPERTY IDENTIFICATION NUMBER
MEAS	MEASURED	MEASURED
PROP	PROPORTIONED	PROPORTIONED
OU	ORIGIN UNKNOWN	ORIGIN UNKNOWN
SC	STANTEC GEOMATICS LTD.	STANTEC GEOMATICS LTD.
P	PLAN 4R-28634	PLAN 4R-28634
P2	PLAN 4R-27297	PLAN 4R-27297
P3	PLAN 4R-25852	PLAN 4R-25852
P4	PLAN 4R-27485	PLAN 4R-27485

ALL SET MONUMENTS SHOWN HEREON ARE IRON BARS (IB) UNLESS OTHERWISE NOTED.

Stantec Geomatics Ltd.
Ontario Land Surveyors
Canada Lands Surveyors
1331 CLYDE AVENUE, SUITE 400, OTTAWA, ON. K2C 3G4
PHONE (613)722-4420 FAX (613)722-2799
brian.webster@stantec.com
stantec.com

DRAWN BY:CEC CHECKED BY:BW PM: BW FIELD: AL PROJECT No.: 161612756-232

W:\active\161612756-111_Riocan Huntmar&417\subdivision_final_plan_riocan\idd\dwg\161612756-132-riocan Huntmar\west-rev5.dwg