

**CLIENT**

6783 WELLINGTON ROAD  
RR #22 CAMBRIDGE  
ON, N3C 2V4

---

**COPYRIGHT**

This drawing has been prepared solely for the intended use. Any reproduction or distribution for any purpose other than authorized by IBI Group is forbidden. Written dimensions shall have precedence over scaled dimensions. Contractors shall verify and be responsible for all dimensions and conditions on the job, and IBI Group shall be informed of any variations from the dimensions and conditions shown on the drawing. Shop drawings shall be submitted to IBI Group for general conformance before proceeding with fabrication.

IBI Group Professional Services (Canada) Inc.  
is a member of the IBI Group of companies

---

**ISSUES**

No.	DESCRIPTION	DATE
1	ISSUED FOR SPA	2021-05-14

---

**KEY PLAN**

---

**LEGEND**

- PROPOSED DECIDUOUS TREES
- PROPOSED CONIFEROUS TREE
- PROPOSED DECIDUOUS SHRUBS
- PROPOSED CONIFEROUS SHRUBS
- PROPOSED PERENNIALS
- PROPOSED ORNAMENTAL GRASSES
- PROPOSED CONTOUR LINES
- PROPOSED CHAIN LINK FENCE
- PROPOSED DECORATIVE FENCE
- PLANT SPECIES QUANTITY
- PROPOSED 3:1 SLOPE (UNLESS NOTED)
- SOD AS SPECIFIED MINIMUM 150mm TOPSOIL DEPTH
- MEADOW SEED MIX
- GROUND COVER
- SOIL CELL PLANTING AREA
- CONCRETE SIDEWALK

---

**SEAL**

**IBI GROUP**  
400 - 333 Preston Street  
Ottawa ON K1S 5M4 Canada  
tel 613 225 1311 fax 613 225 5866  
ibigroup.com

---

**PROJECT**  
**THE BURROUGHS KANATA**

8555 CAMPEAU DRIVE

---

**PROJECT NO:** 127255  
**DRAWN BY:** R.S.  
**PROJECT MGR:** T.M.

**CHECKED BY:** D.G.  
**APPROVED BY:** T.M.

---

**SHEET TITLE**  
**LANDSCAPE PLAN**

---

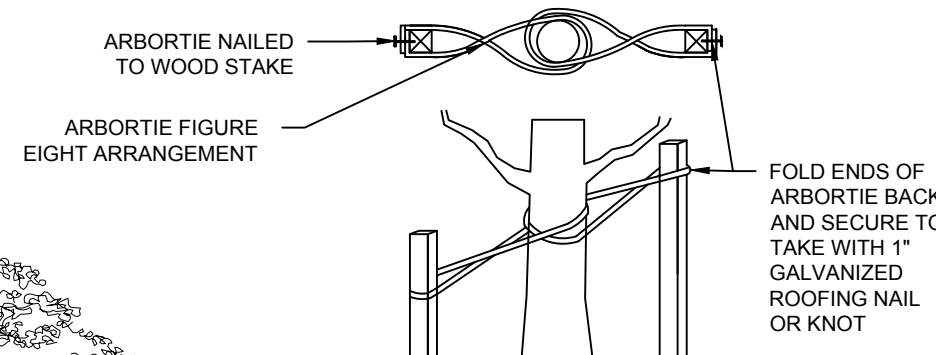
**SHEET NUMBER** L1 **ISSUE** 1

SCALE CHECK

File Location: \\127255\_8555campeau\7\_D\_Design\05\_Landscape\Sheet127255\_L.dwg Last Saved: May 13, 2021, 4:52:11 PM by Raahika Sherry

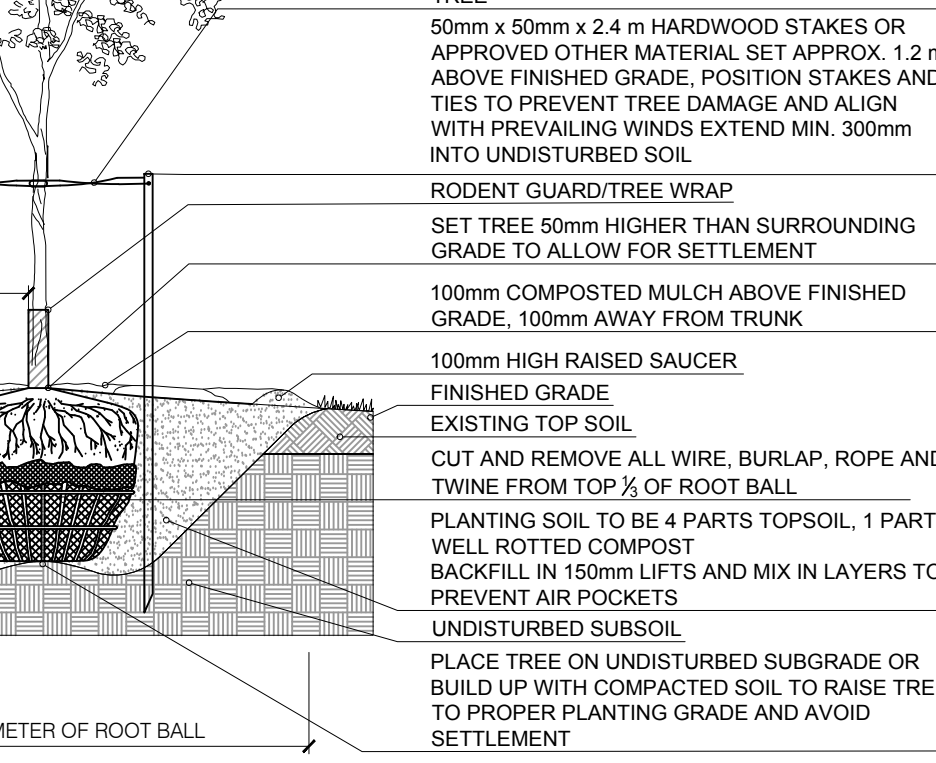
**PLANTING SCHEDULE**

KEY	QTY	BOTANICAL NAME	COMMON NAME	CAL/PER (mm)	SIZE (cm)	CONDITION/FORM	MINIMUM ON CENTRE SPACING (m)	GENUS %
<b>DECIDUOUS TREES</b>								
AI	21	<i>Ametanchier laevis</i>	Alleghany Serviceberry	50		W.B	8	16%
AxC	5	<i>Acer x freemanii 'Celebration'</i>	Celebration Maple	50		W.B	10	
AP	4	<i>Acer fructicosum x glaberrimum 'Warrenred'</i>	Pacific Sunset Maple	50		W.B	10	14%
ASN	10	<i>Acer saccharum subsp. Nigrum</i>	Black Maple	50		W.B	10	
Ca	14	<i>Cornus alternifolia</i>	Alternaleaved Dogwood	50		W.B	8	11%
Cc	10	<i>Carpinus caroliniana</i>	American Hornbeam	50		W.B	8	8%
GSS	10	<i>Gleditsia triacanthos 'Suncole'</i>	Sunburst Honeylocust	50		W.B	10	8%
GS	14	<i>Galearia occidentalis</i>	Hackberry	50		W.B	8	11%
PP	2	<i>Prunus pennsylvanica</i>	Pin Cherry	50		W.B	8	
Pa	5	<i>Prunus serotina</i>	Black Cherry	50		W.B	8	5%
Qm	12	<i>Quercus macrocarpa</i>	Burr Oak	50		W.B	10	14%
QR	6	<i>Quercus rubra</i>	Red Oak	50		W.B	10	
Tab	6	<i>Tilia americana 'Boulevar'</i>	Boulevard Basswood	50		W.B	10	5%
Lavf	5	<i>Ulmus americana 'Valley Forge'</i>	Valley Forge Elm	50		W.B	10	4%
ZG	8	<i>Zelkova serrata 'Green Vase'</i>	Green Vase Zelkova	50		W.B	10	6%
TOTAL	132							100%
<b>CONIFEROUS TREES</b>								
PaT	1	<i>Picea pungens 'Hoopsii'</i>	Colorado spruce	200		W.B	1.5	1%
ToE	74	<i>Thuja occidentalis 'Emerald'</i>	Emerald Cedar	200		W.B	1.5	99%
TOTAL	75							
<b>SHRUBS</b>								
BIG	104	<i>Berberis thunbergii 'Golden Nugget'</i>	Golden Nugget Barberry	60	3 Gal		1	8%
CaK	126	<i>Cornus sericea 'Kelsey'</i>	Kelsey Dwarf Dogwood	60	3 Gal		1	9%
DxK	78	<i>Diervilla x 'Kodiak Orange'</i>	Kodiak Orange Honeysuckle	60	3 Gal		1	6%
Fg	72	<i>Fothergilla gardenii</i>	Dwarf Fothergilla	60	3 Gal		1	5%
HDF	43	<i>Hydrangea paniculata 'Pee Wee'</i>	Pee Wee Hydrangea	60	3 Gal		1	3%
JKM	44	<i>Lonicera chrysantha 'Mist Lilac'</i>	Mist Lilac Juniper	60	3 Gal		1	3%
POD	64	<i>Physocarpus opulifolius 'Diablo'</i>	Diablo Ninebark	60	3 Gal		1	5%
SdM	183	<i>Spiraea x dumalis 'Magic Carpet'</i>	Magic Carpet Spiraea	60	3 Gal		1	14%
SMP	62	<i>Syringa meyeri 'Palibin'</i>	Dwarf Korean Lilac	60	3 Gal		1	5%
Tmh	460	<i>Taxus x media 'Tricksy'</i>	Hick's Yew	60	3 Gal		1	34%
WRB	110	<i>Weigela florida 'Spilled Wine'</i>	Spilled Wine Weigela	60	3 Gal		1	8%
TOTAL	1346							100%
<b>PERENNIALS &amp; GRASSES</b>								
AVV	480	<i>Asplenium platyneuron 'Valfredo'</i>	Chocolate Chip Bugleweed	40	1 Gal		0.3	9%
AT	390	<i>Asclepias tuberosa</i>	Butterfly Weed	40	1 Gal		0.3	7%
HA	840	<i>Hosta 'Autumn Frost'</i>	Plantain Lily	40	1 Gal		0.3	16%
HJ	1000	<i>Hemerocallis 'Joan Senior'</i>	Joan Senior Daylily	40	1 Gal		0.3	19%
HxS	320	<i>Huechella x 'Sweet Tea'</i>	Sweet Tea Foamy Bells	40	1 Gal		0.3	6%
Rh	1067	<i>Rudbeckia hirta</i>	Black-eyed Susans	40	1 Gal		0.3	20%
SnN	1275	<i>Salvia nemerosa 'New Dimension Rose'</i>	New Dimension Rose Meadow Sage	40	1 Gal		0.3	24%
TOTAL	5372							100%

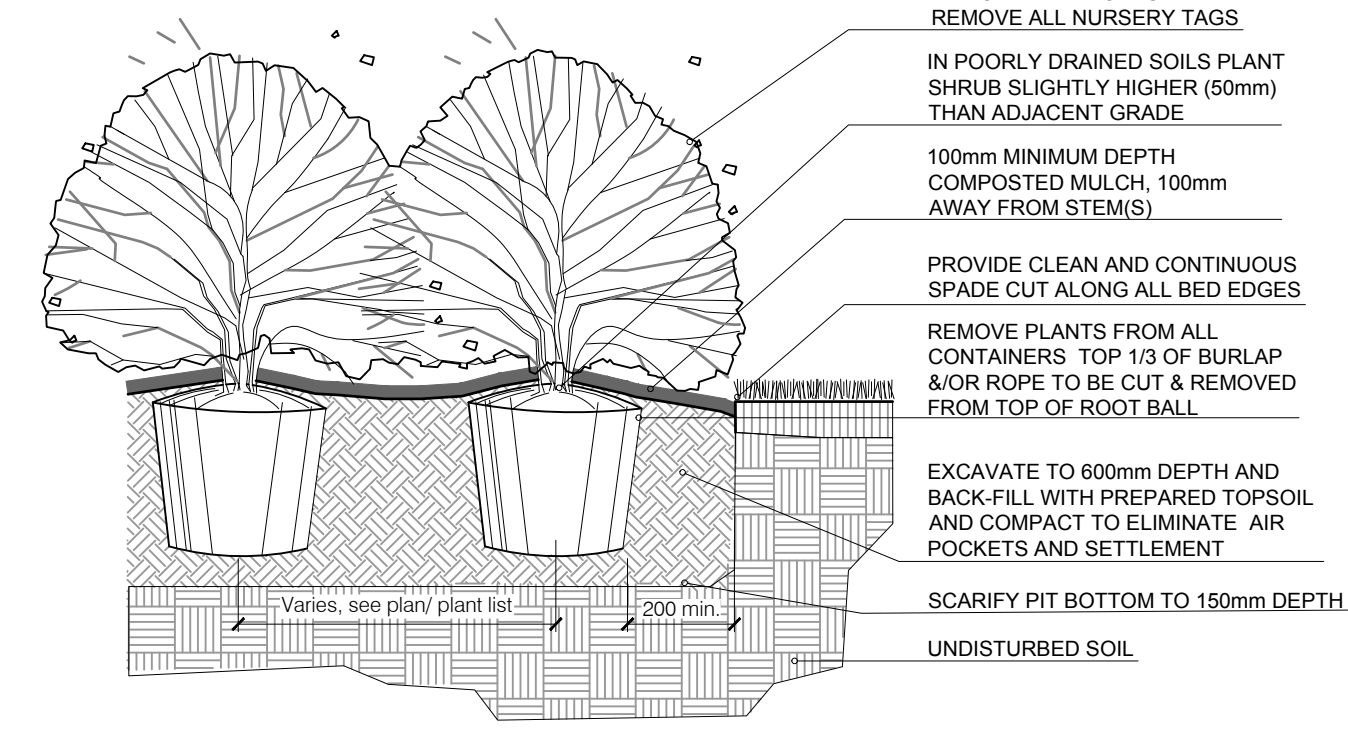


WHERE PRUNING IS REQUIRED, RETAIN NATURAL FORM OF TREE. DO NOT PRUNE LEADER BRANCH. REMOVE ALL NURSERY TAGS AND RIBBON FROM CANOPY.

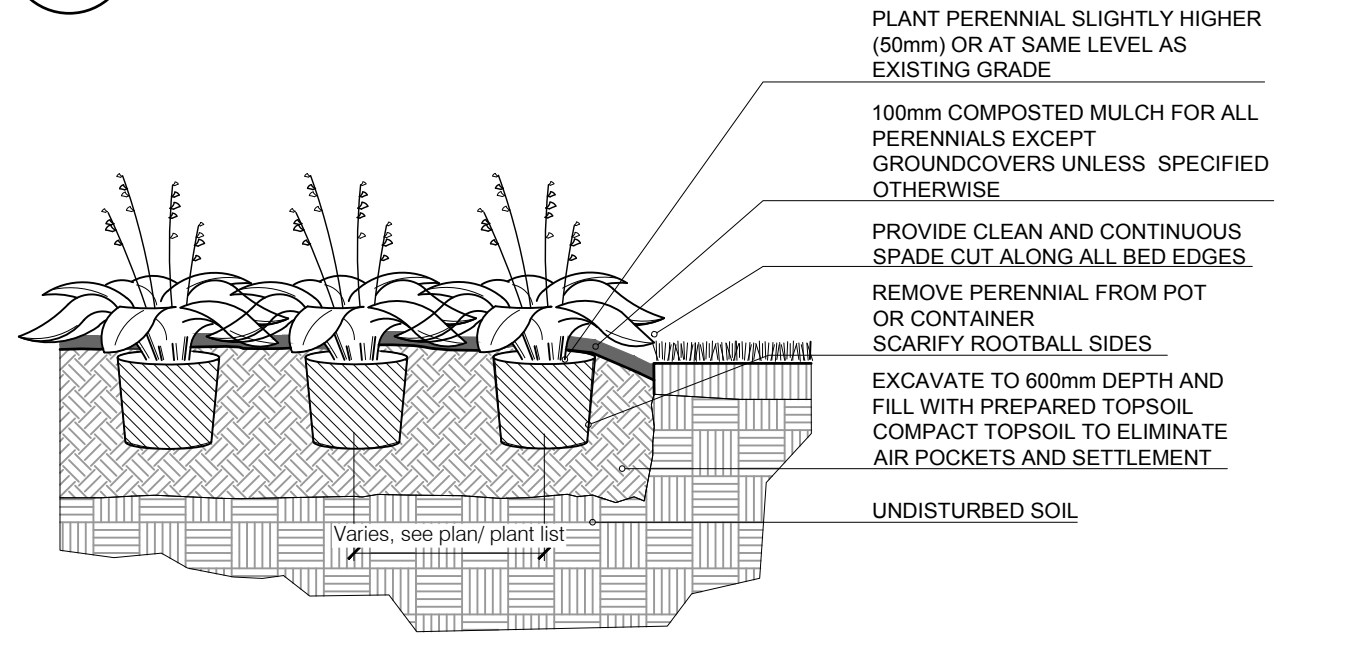
FLAT WOVEN POLYPROPYLENE MATERIAL 19mm WIDE, 900lb. BREAK STRENGTH. FASTEN IN FIGURE 8 CONFIGURATION AND FASTENED TO STAKES IN A MANNER WHICH PERMITS TREE MOVEMENT AND SUPPORTS THE TREE.



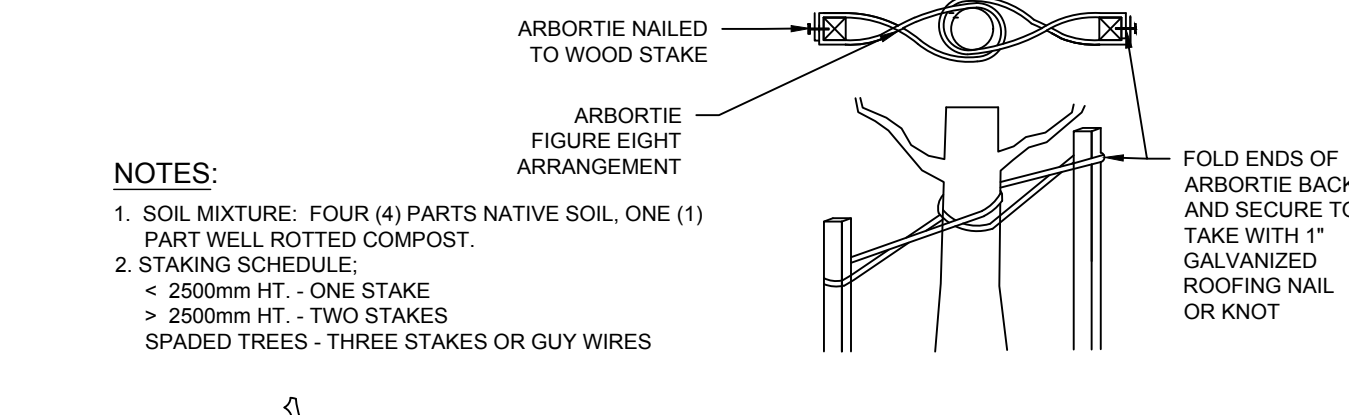
1 BALLED & BURLAPPED/WIRE BASKET DECIDUOUS TREE  
LD1 N.T.S.



2 BALLED AND BURLAPPED/POTTED SHRUB  
LD1 N.T.S.

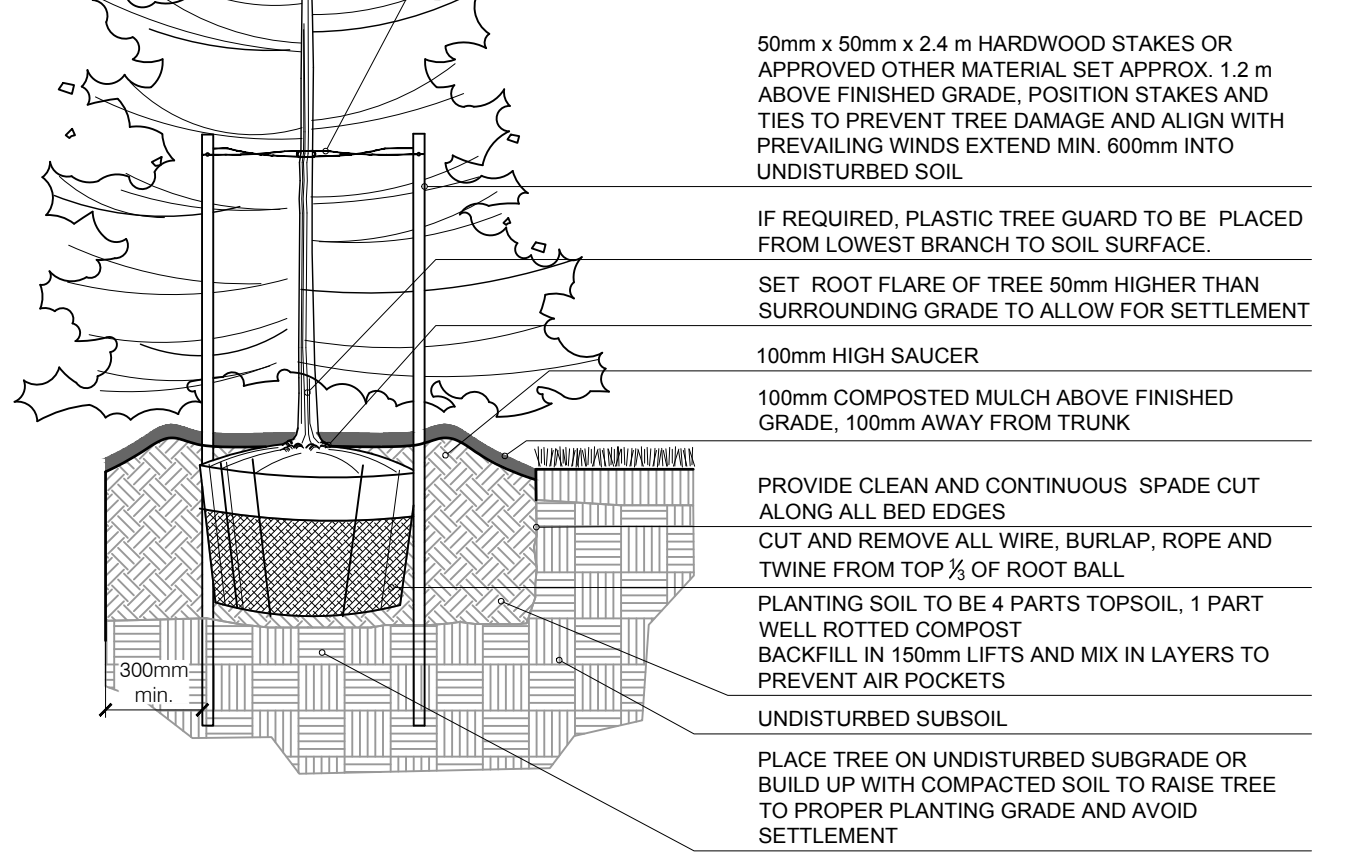


3 CONTAINER GROWN PERENNIAL/GRASS  
LD1 N.T.S.

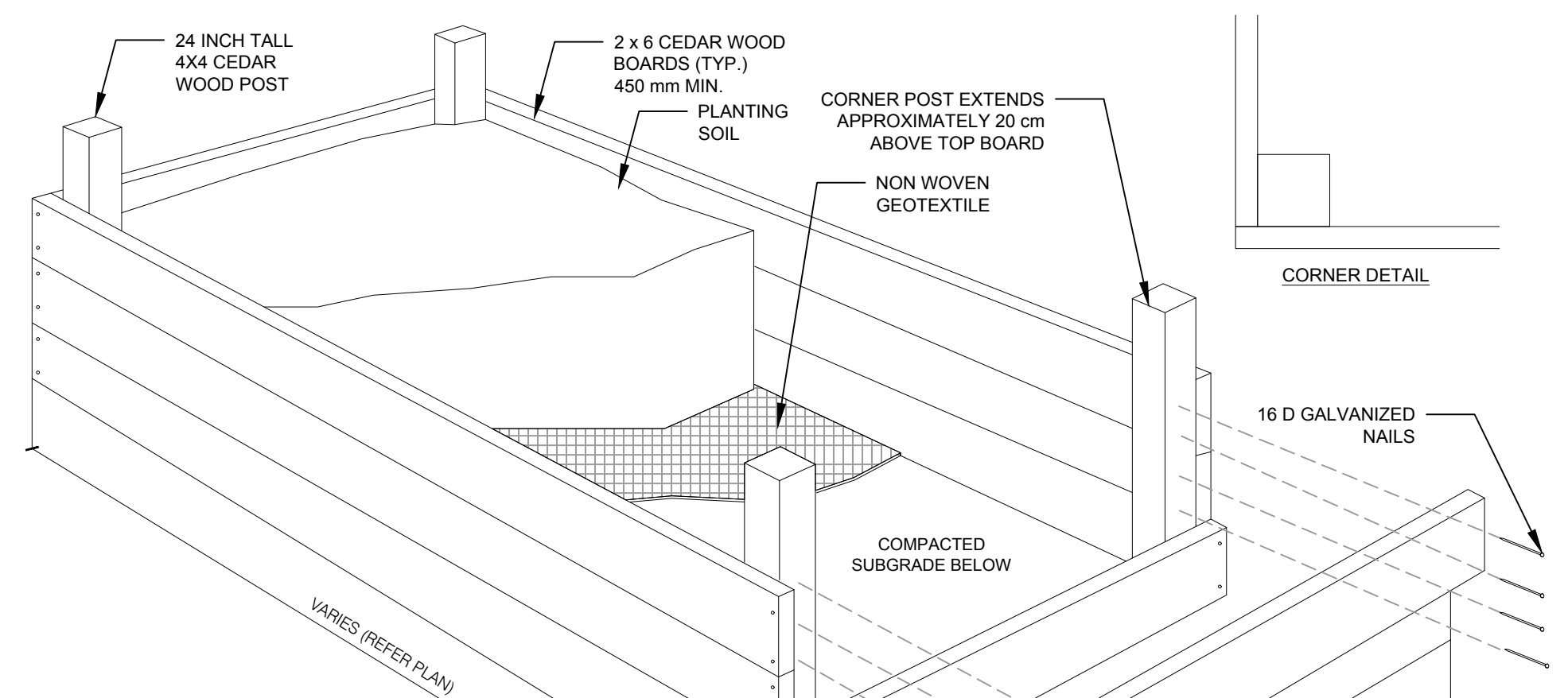


NOTES:  
1. SOIL MIXTURE: FOUR (4) PARTS NATIVE SOIL, ONE (1) PART WELL ROTTED COMPOST.  
2. STAKING SCHEDULE:  
x 2500mm HT. - ONE STAKE  
x 2500mm HT. - TWO STAKES  
SPACED TREES - THREE STAKES OR GUY WIRES

DO NOT PRUNE LEADER BRANCH. REMOVE ALL NURSERY TAGS AND RIBBON FROM CANOPY.

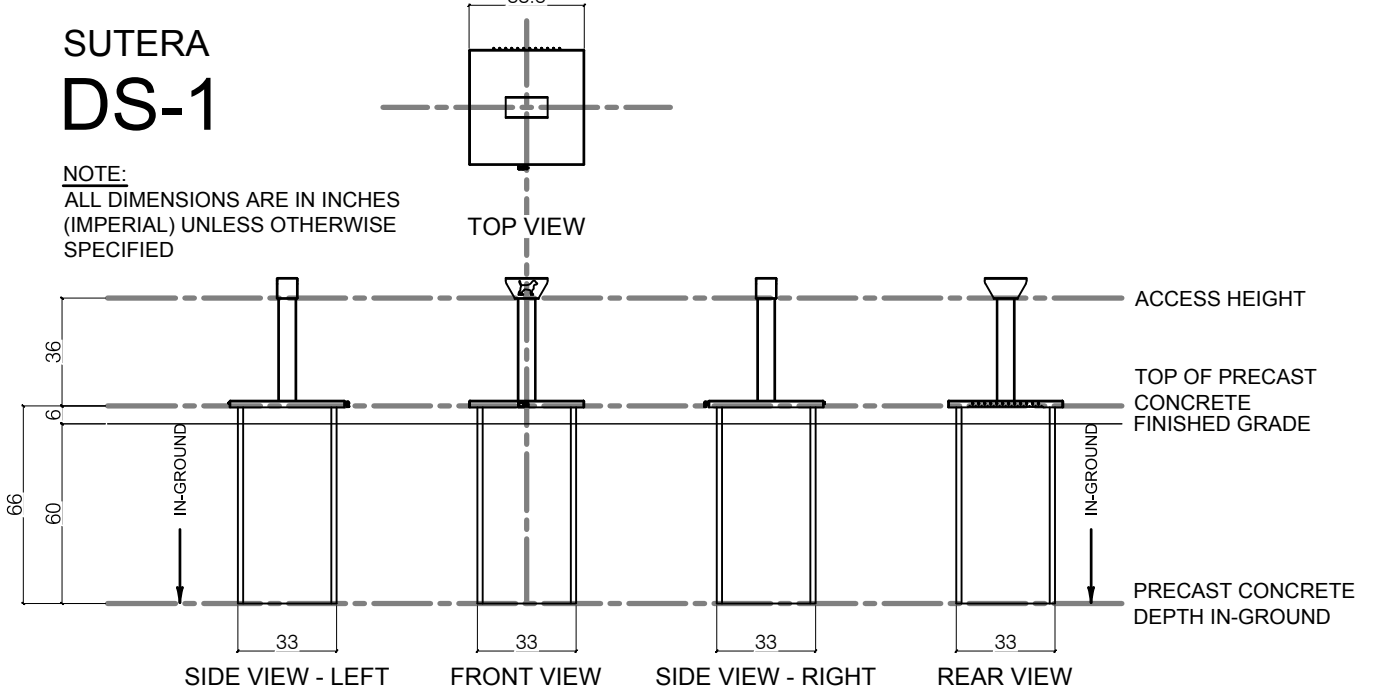


4 BALLED & BURLAPPED/WIRE BASKET CONIFEROUS TREE  
LD1 N.T.S.

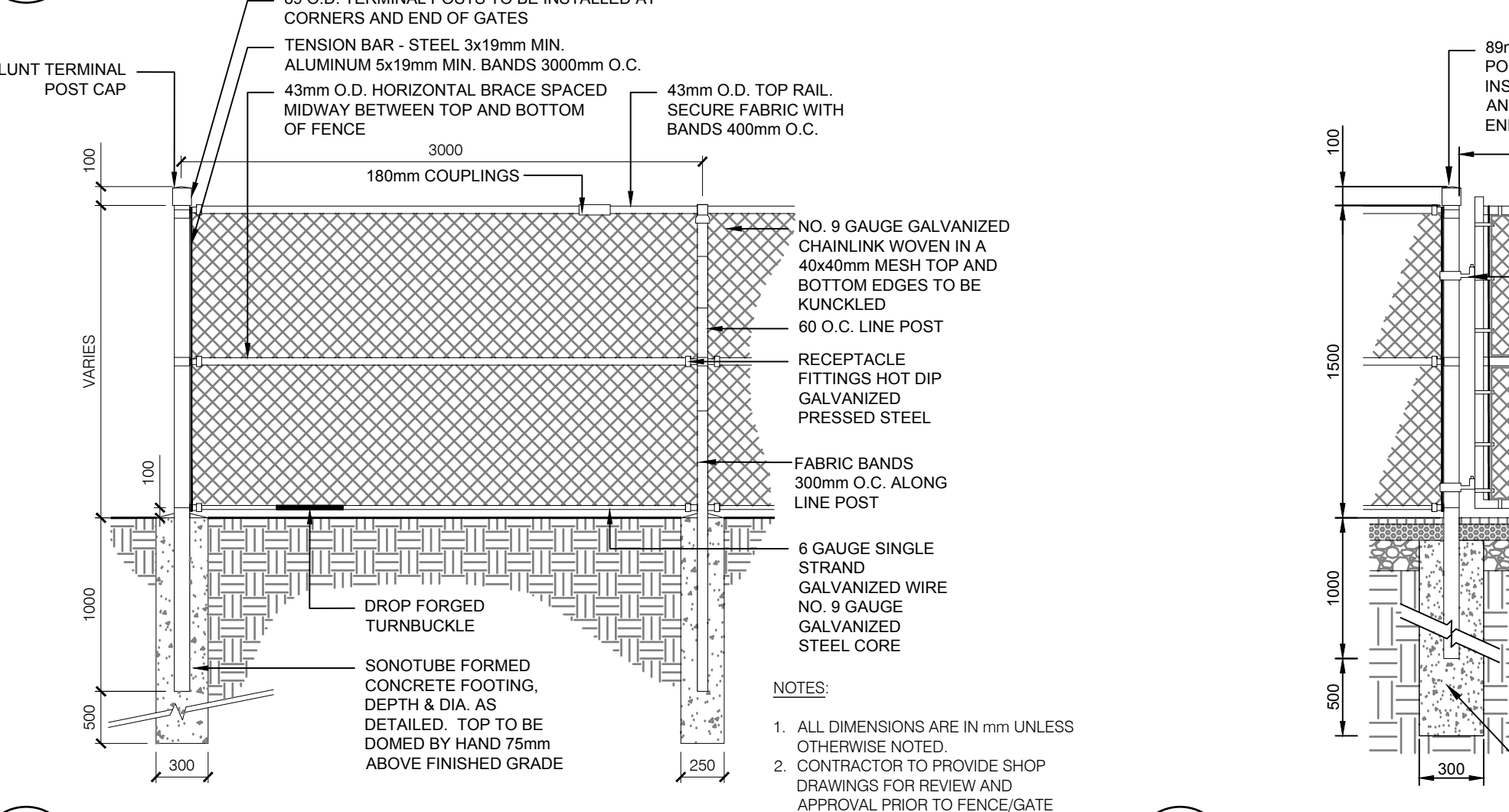


NOTES:  
1. RAISED PLANTERS TO BE PLACED DIRECTLY ON GROUND. AREA TO BE SMOOTHED AND FLATTENED PRIOR TO PLACEMENT.  
2. WOOD DIM'S SPECIFIED ARE NOMINAL (IMPERIAL).

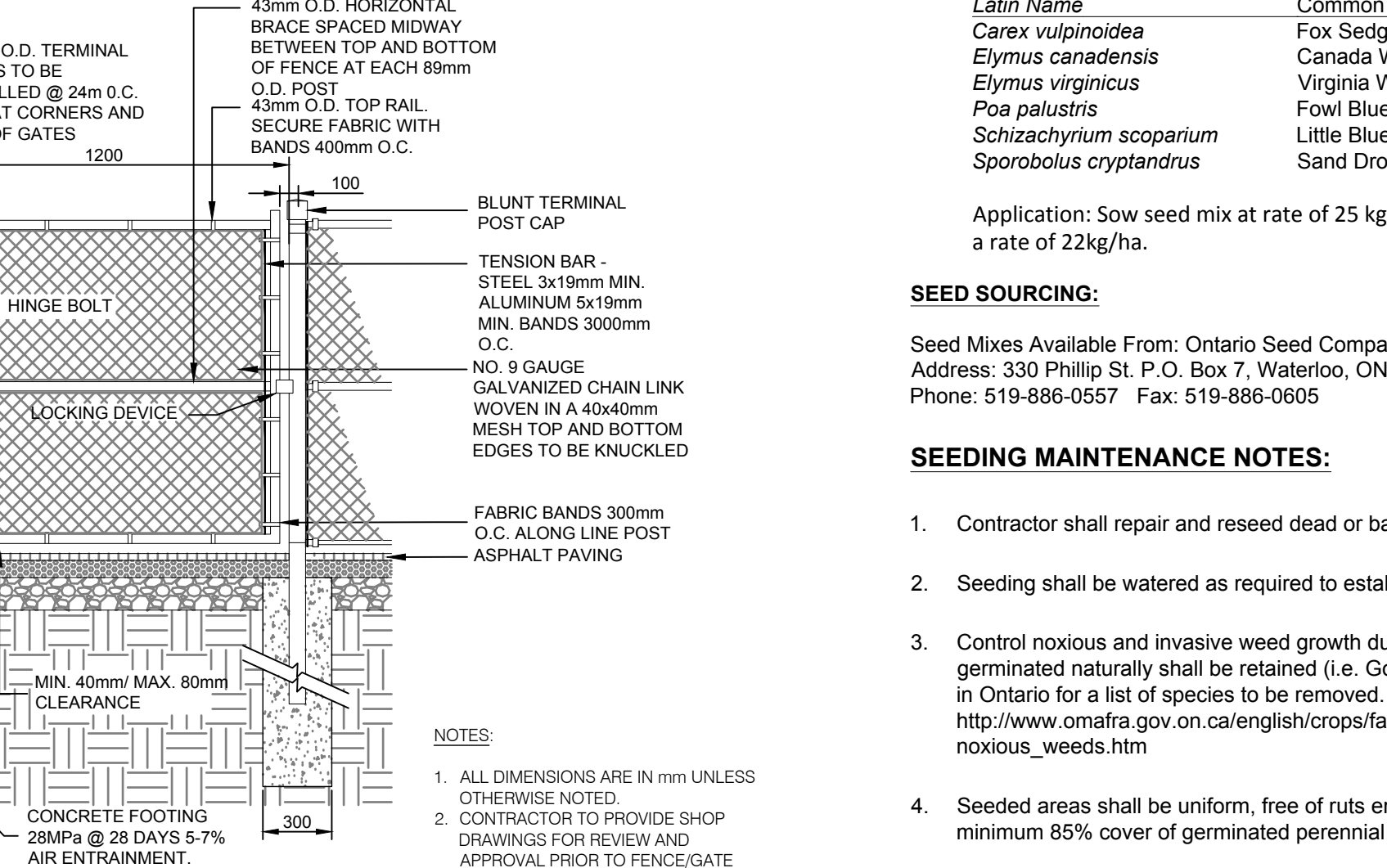
5 RAISED PLANTER BED  
LD1 N.T.S.



6 SUTERA WASTE STRUCTURE  
LD1 N.T.S.



7 CHAINLINK FENCE  
LD1 N.T.S.



8 CHAINLINK GATE  
LD1 N.T.S.

SEEDING NOTES:  
SEEDING MIXES:  
SEED MIX #3  
OSC SEED MIX #8140  
NATIVE UPLAND FORAGE AND MEADOW MIX

Latin Name	Common Name	%
<i>Carex vulpinoidea</i>	Fox Sedge	5%
<i>Elymus canadensis</i>	Canada Wild Rye	35%
<i>Elymus virginicus</i>	Virginia Wild Rye	35%
<i>Poa palustris</i>	Foxfl Bluegrass	10%
<i>Schizachyrium scoparium</i>	Little Bluestem	5%
<i>Sporobolus cryptandrus</i>	Sand Dropseed	10%

Application: Sow seed mix at rate of 25 kg/ha with a nurse crop of Annual Oats (*Avena sativa*), seeded at a rate of 22kg/ha.

SEED SOURCING:  
Seed Mixes Available From: Ontario Seed Company (OSC)  
Address: 330 Phillip St. P.O. Box 7, Waterloo, ON N2J 3Z6  
Phone: 519-886-0557 Fax: 519-886-0605

SEEDING MAINTENANCE NOTES:

- Contractor shall repair and reseed dead or bare spots prior to substantial completion.
- Seeding shall be watered as required to establish weed-free, healthy establishment of seed mix.
- Control noxious and invasive weed growth during two (2) year maintenance period. Native species that have germinated naturally shall be retained (i.e. Goldenrods, Asters, and etc.) Refer to OMAFRA's Noxious Weeds in Ontario for a list of species to be removed. [http://www.omafra.gov.on.ca/english/crops/facts/noxious\\_weeds.htm](http://www.omafra.gov.on.ca/english/crops/facts/noxious_weeds.htm)
- Seeded areas shall be uniform, free of ruts erosion and/or bare and dead spots, free of weeds, and have minimum 85% cover of germinated perennial seed for final acceptance.
- Contractor shall be responsible for all damage to seeded areas and shall restore it to original condition to the satisfaction of the Landscape Architect.

GENERAL NOTES  
1. Any ambiguity in the drawings, specifications or details are to be reported to the Landscape Architect for direction. These drawings shall not be used for construction unless stamped and signed by the Landscape Architect. The Contractor is not to proceed in uncertainty. The limits of work are to be clearly understood by the Contractor prior to any work taking place on the site.

- All dimensions are in meters unless otherwise noted. The drawings may be scaled for approximate layout. The Contractor is to verify all dimensions on the drawing(s) and report any discrepancies to the Landscape Architect.
- The Contractor is to locate and mark all infrastructure and utilities prior to any excavation work or planting on the site. Do not plant directly above underground utilities or infrastructure unless approved by the Landscape Architect. Dig all holes by hand when closer than 1.0m to any underground power, telephone or gas utility. The Contractor is responsible for the coordination and maintenance of all utility/infrastructure for the duration of the Contract.
- The Contractor shall supply all materials in quantities sufficient to complete work shown on these drawings. The Contractor is not to substitute materials, products or quantities without prior written consent of the Landscape Architect.
- The Contractor is to take all necessary precautions to protect all existing site features unless specified for removal/demolition. This includes all survey bars, stakes, monuments and sediment barriers. The Contractor is responsible for any damages incurred during construction and must make all necessary restorations and repairs to original or better condition.
- All existing trees, shrubs, and herbaceous plants beyond the limit of work are to be protected from construction damage. This includes but is not limited to: not storing construction materials or fuel within the dripline of an existing tree, not altering existing grades or compacting soil around protected vegetation and taking care not to disturb or expose the roots of any existing trees. The Contractor is responsible for all protection or hoarding measures of all existing trees and vegetation to be preserved within or adjacent to construction work limits.
- Contractor is responsible for the removal of all debris, garbage and surplus materials on site related to their contract or work and must keep the site in a clean, safe, useable condition at all times or as directed by the Contract Administrator.

PLANTING NOTES

- The Contractor must notify the Landscape Architect prior to the commencement of any planting. The Contractor shall supply all plants and materials in quantities sufficient to complete the work shown on this drawing. Any discrepancies between quantities shall be reported to the Landscape Architect.
- All landscape works will be warranted for a period of two years following inspection and written notice of start of warranty period as determined and provided by the Landscape Architect. Plant material, which is not in a healthy, vigorous growing condition at the end of the warranty period, shall be replaced to the satisfaction of the Landscape Architect / Owner.
- The Landscape Architect reserves the right to extend Contractor's warranty responsibilities for an additional year if, at the end of initial warranty period, leaf development and growth is not sufficient to ensure future survival as determined by the Landscape Architect.
- The Contractor is to identify with Landscape Architect/Owner any maintenance requirements necessary for warranty purposes.
- Plant materials specified for this project will conform to the Canadian Nursery Landscape Association (C.N.L.A.) for size, variety and condition as indicated on the plant schedule shown on these drawings. Any plant materials which do not conform will be promptly removed from the site and replaced by the Contractor at no additional cost to the project.
- The Landscape Architect is to be contacted for inspection and written approval prior to plant material arriving on site. The Landscape Architect reserved the right to reject any plant materials that have not been inspected and approved.
- The Landscape Architect reserves the right to refuse acceptance of any plant displaying poor growth habits, injury or disease. Any plant material that is rejected by the Landscape Architect will be promptly removed from the site and replaced with material of acceptable quality at no additional charge to the project.
- Plant materials collected from wild sources will not be accepted without written approval of the Landscape Architect. The Landscape Architect reserves the right to require that supplier invoices be submitted for inspection and approval prior to acceptance.
- On-site layout of the plant materials to be approved by the Landscape Architect prior to installation. Minor field adjustments to plant material locations may be necessary to respond to the locations of existing plants and site conditions. The Contractor must receive approval from Landscape Architect prior to installation.
- Plants are not to be installed during extreme heat, drought, or other undesirable conditions. Thoroughly water all plants immediately after installation. The Contractor shall regularly monitor site conditions and water as required to ensure healthy growth conditions throughout the duration of the warranty period.
- Do not plant directly in centerline of drainage swales or depression areas. Where proposed planting locations conflict with constructed swales or low-lying wet areas, contact Landscape Architect for direction.
- All plants are to be planted in accordance with the planting details shown on this drawing. All plants are to be installed vertical and plumb, regardless of ground slope.
- Supply and place topsoil in accordance with OPSS 802 to a minimum depth of 150mm in seed/sod areas and 600mm in planting beds unless otherwise specified. Each source of topsoil, imported or native to be approved by Landscape Architect prior to use. Submit topsoil analysis/test results to Landscape Architect prior to order or delivery to site. Testing to be in accordance with Contract specifications. Prepared topsoil shall be 4 parts topsoil to one part well-rotted compost.
- composted Mulch: to be spread uniformly around the base of trees and shrubs to a minimum depth of 100 mm. Do not place mulch in direct contact with trunk or stem(s). Allow a 100 mm mulch free zone at trunk/stems. Shrubs to be in continuously mulched planting beds unless otherwise specified.
- Supply and place seed in accordance with OPSS 804 unless otherwise specified. All 5:1 or greater slopes to be seeded with tackifier. All slopes greater than 3:1 shall be matted with an erosion control blanket. Supply and place sod in accordance with OPSS 803 unless otherwise specified.
- The Contractor is to remove dead or damaged branches on trees or shrubs. All pruning shall be performed in accordance with standard horticultural practices and appropriate timing for each species.
- All stakes and associated ties are to be removed after the first full growing season. Rodent guards are to be removed at the conclusion of the warranty period. Gatorbags are to be removed for winter months.

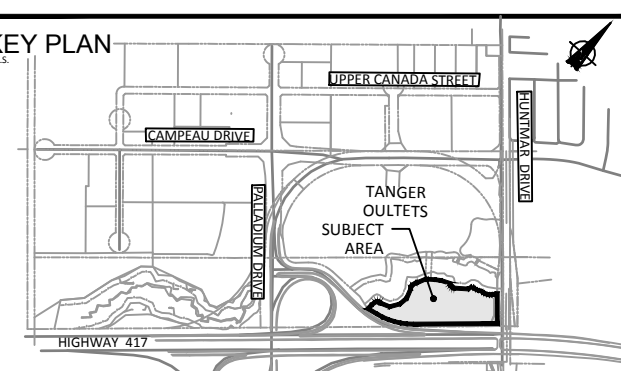
SOD NOTES  
1. Any lawn areas disturbed by construction shall be re-sodded and repaired to original condition or better.  
2. Sod and sodding operations to be in accordance with OPSS 803, except as noted below.  
3. Sod to be delivered to project within 24 hours of being harvested and laid within 36 hours thereafter.  
4. Rough graded and compacted soil shall be scarified to a minimum depth of 100 mm free of all stones, roots, branches, larger than 25 mm diameter. Topsoil to be spread at a minimum depth of 150 mm compacted to 85% S.P.D.  
5. Place sod on prepared topsoil with staggered joints and butt tightly. Irrigate immediately to ensure moisture penetration into the upper 100 mm (4") of soil. Machine roll to ensure contact with topsoil. Repair minor grade deficiencies and irregularities.  
6. Water sod immediately after laying to obtain moisture penetration to a minimum of 100 mm depth within topsoil. Maintain sod per OPSS 803. Sod must be cut a minimum of two times for Final Acceptance at the discretion of the Landscape Architect.



COPYRIGHT  
This drawing has been prepared solely for the intended use. This reproduction or distribution for any purpose other than that authorized by IBI Group is forbidden. Written dimensions shall have precedence over scaled dimensions. Contractors shall verify and be responsible for all dimensions and conditions on the job, and IBI Group shall be informed of any variations from the dimensions and conditions shown on the drawing. Shop drawings shall be submitted to IBI Group for general concurrence before proceeding with fabrication.

IBI Group Professional Services (Canada) Inc.  
is a member of the IBI Group of companies.

ISSUES	No.	DESCRIPTION	DATE
	1	ISSUED FOR SPA	2021-05-14



LEGEND

PROJECT  
THE BURROUGHS KANATA  
8555 CAMPEAU DRIVE

PROJECT NO: 127255  
DRAWN BY: R.S.  
PROJECT MGR: T.M.

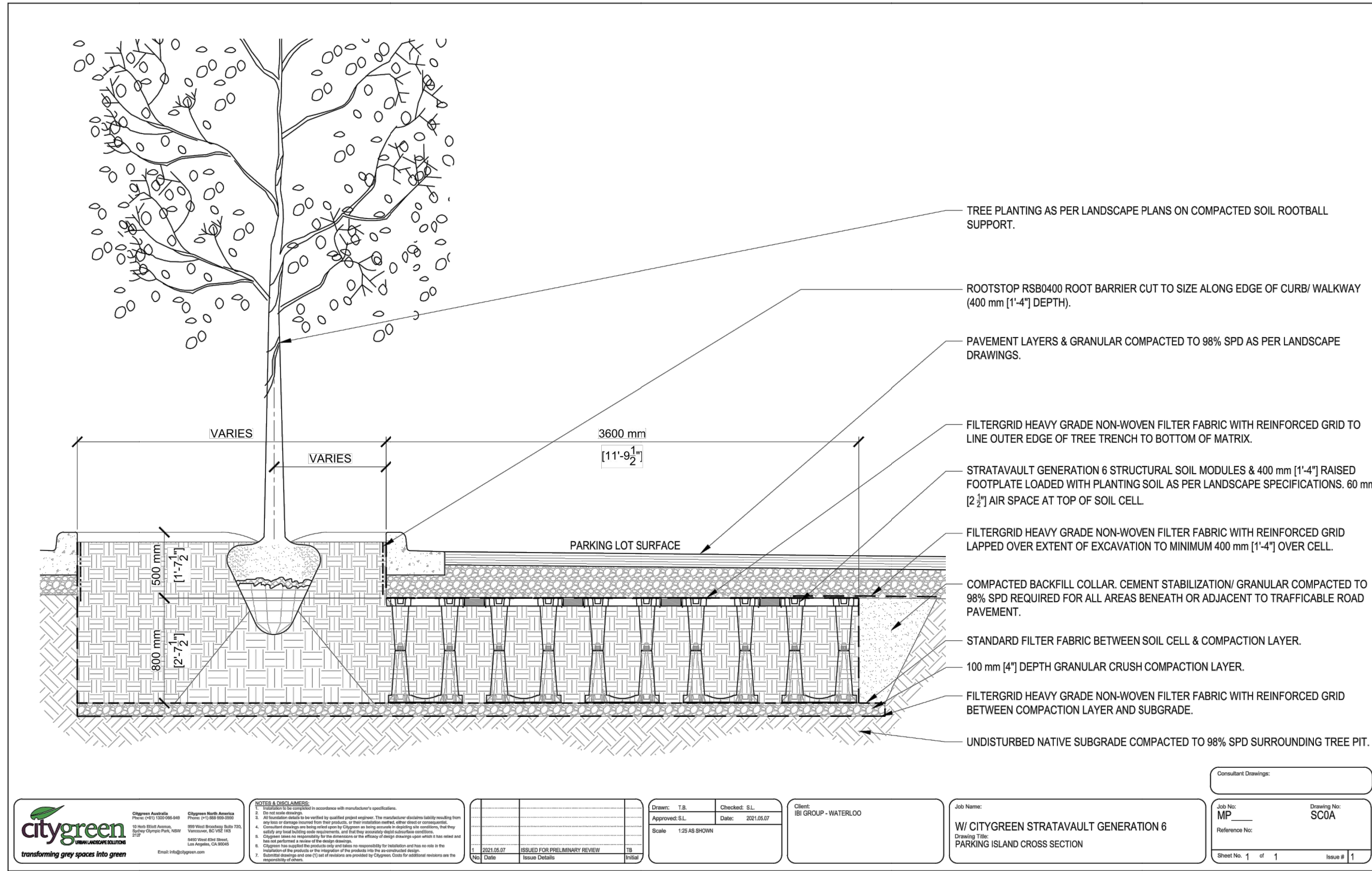
CHECKED BY: D.G.  
APPROVED BY: T.M.

SHEET TITLE  
LANDSCAPE DETAILS

SHEET NUMBER  
LD1

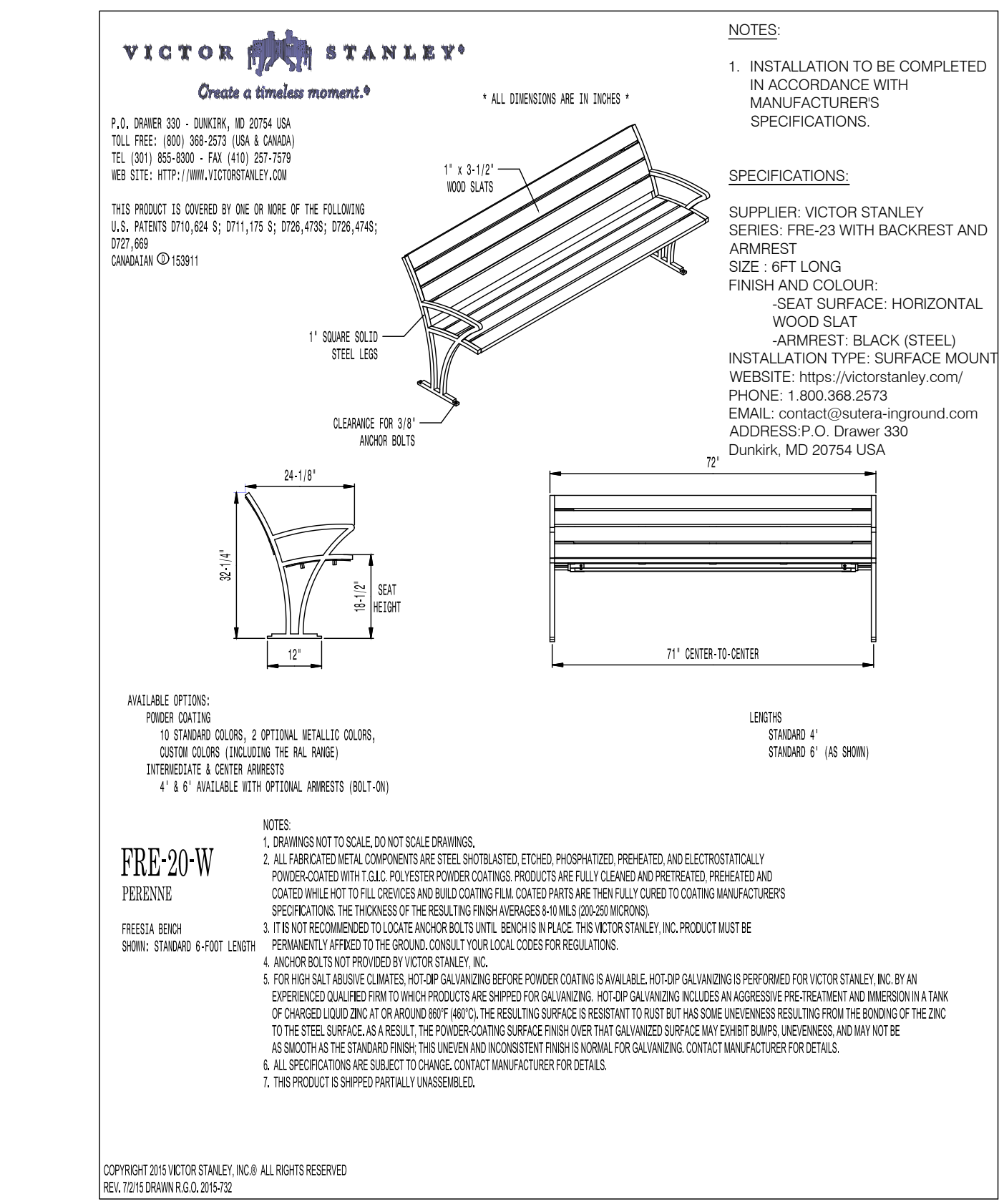
ISSUE  
1

**NOTE:**  
 1. CONTRACTOR TO PROVIDE DETAILED SHOP DRAWINGS FOR ALL SOIL CELL PLANTING AREAS. THESE PLANS MUST INCLUDE DETAILS FOR PLACEMENT OF THE SOIL CELLS, INTEGRATION OF THE PAVING MATERIALS, WITH THE SOIL CELLS, ALL VENTS, WATERING PORTS, GEOGRID, STRUCTURAL SUPPORT AND PLANTING MEDIUM PLACEMENT.  
 2. INSTALLATION TO BE COMPLETED IN ACCORDANCE WITH MANUFACTURERS SPECIFICATIONS



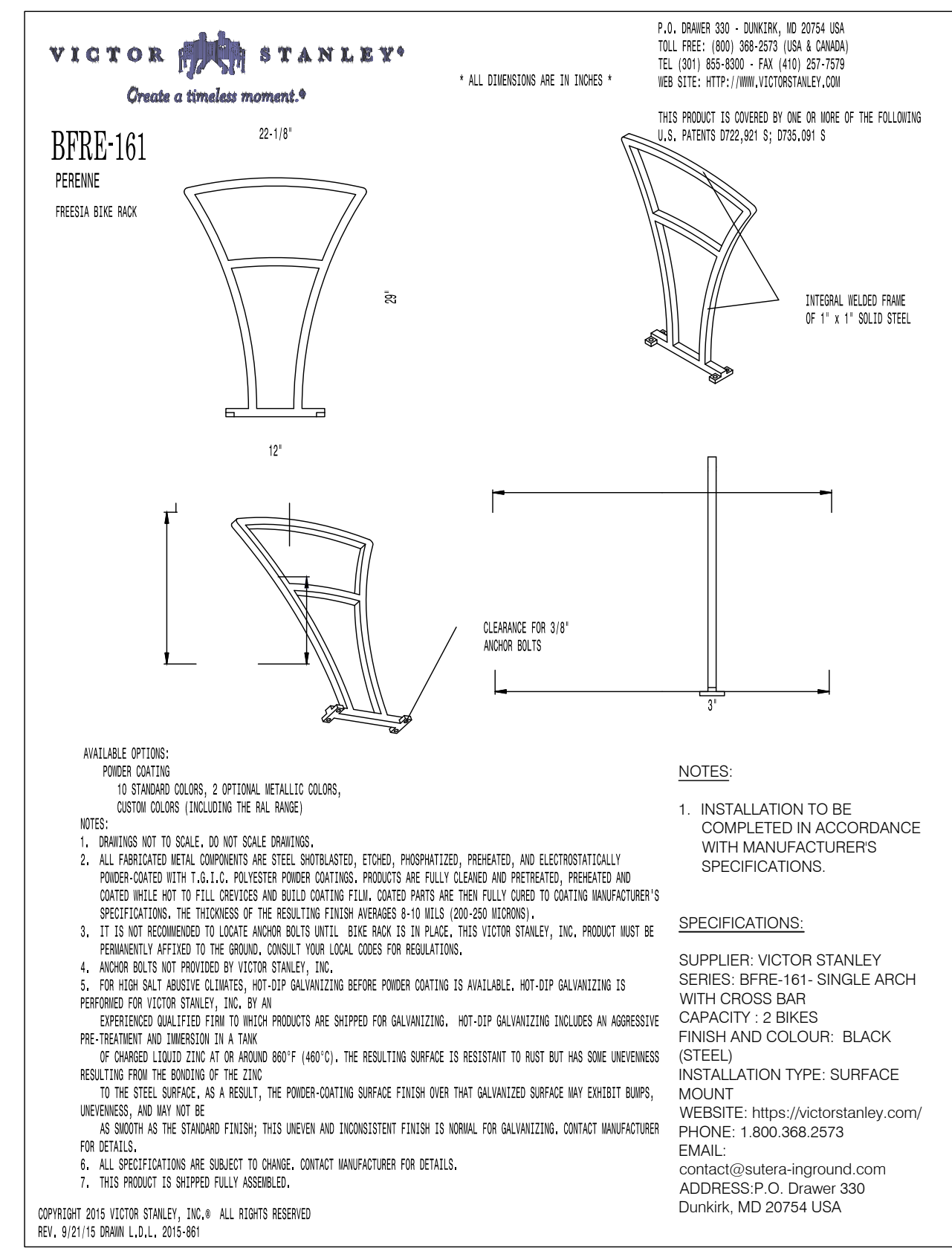
citygreen  
 W CITYGREEN STRATAVAULT GENERATION 6  
 PARKING ISLAND CROSS SECTION

9 DECIDUOUS STREET TREE PLANTING WITH GREENCITY STRATACELL 30 SERIES  
 LD2 N.T.S.

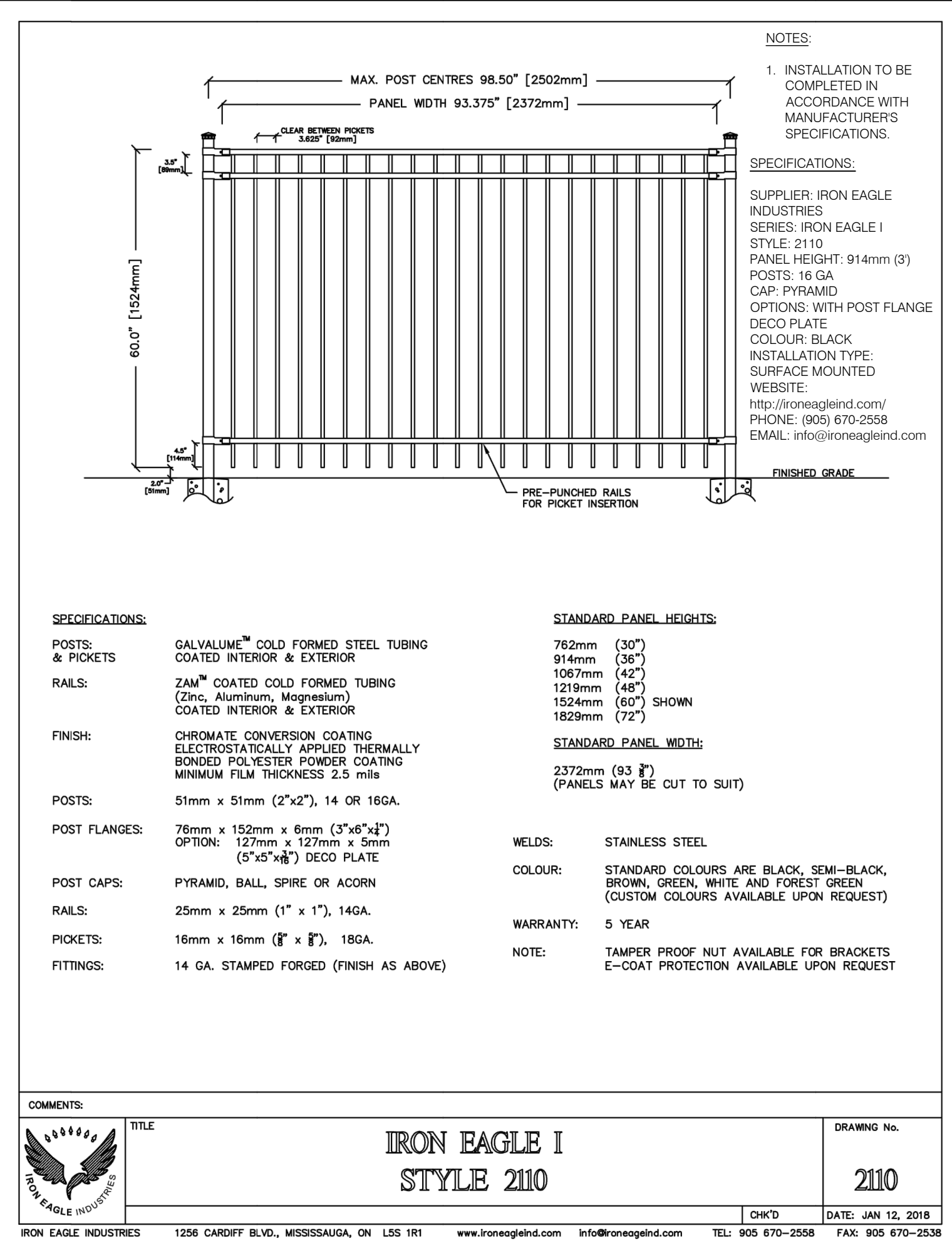


11 FREESIA BENCH  
 LD2 N.T.S.

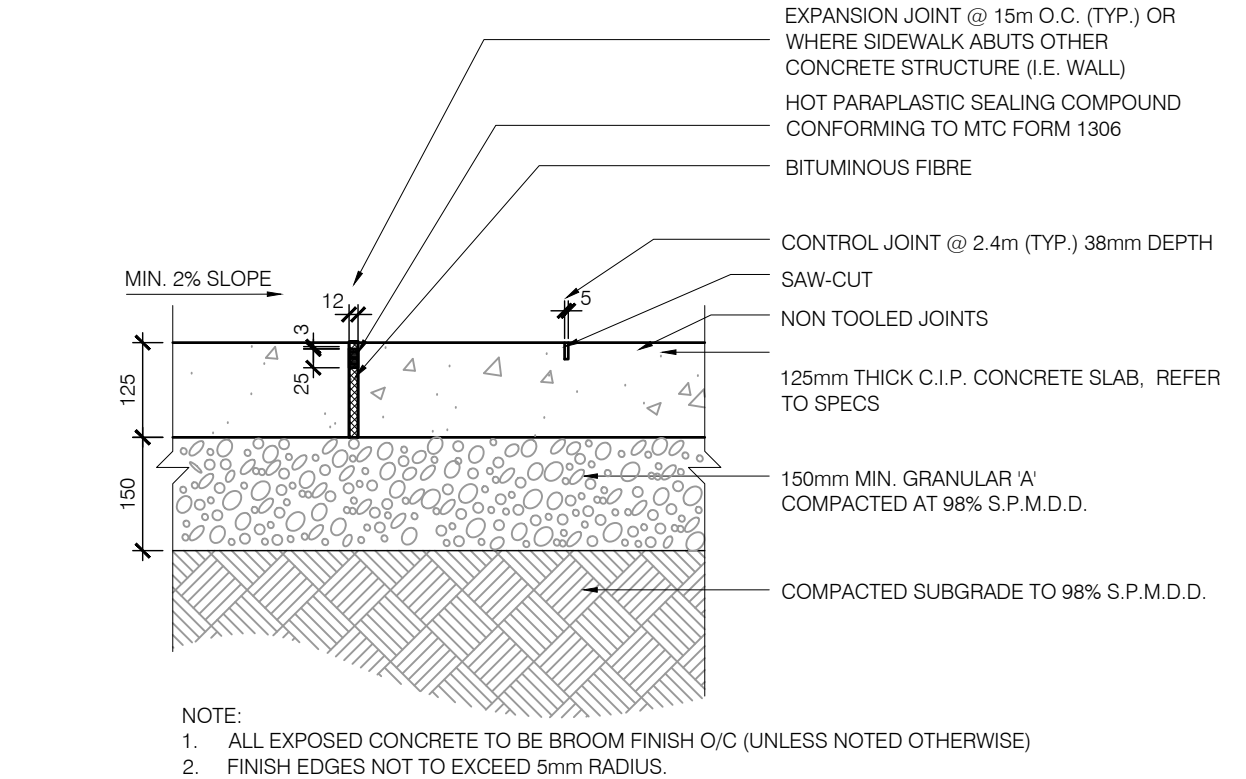
10 DECORATIVE FENCE  
 LD2 N.T.S.



12 FREESIA BIKE RACK  
 LD2 N.T.S.



IRON EAGLE INDUSTRIES  
 1256 CARDIFF BLVD., MISSISSAUGA, ON L5S 1R1  
 www.ironagleind.com  
 INFO@IRONAGLEIND.COM  
 TEL: 905 670-2558 FAX: 905 670-2538



13 CONCRETE PAD  
 LD2 N.T.S.

**CLIENT**  
**REID'S HERITAGE HOMES**  
 6783 WELLINGTON ROAD  
 RR #22 CAMBRIDGE  
 ON, N3C 2V4

**COPYRIGHT**  
 This drawing has been prepared solely for the intended use. This reproduction or distribution for any purpose other than authorized by IBI Group is forbidden. Written dimensions shall have precedence over scaled dimensions. Contractors shall verify and be responsible for all dimensions and conditions on the job, and IBI Group shall be informed of any variations from the dimensions and conditions shown on the drawing. Shop drawings shall be submitted to IBI Group for general confirmation before proceeding with fabrication.

**IBI Group Professional Services (Canada) Inc.**  
 is a member of the IBI Group of companies

**ISSUES**

No.	DESCRIPTION	DATE
1	ISSUED FOR SPA	2021-05-14

**KEY PLAN**  
 TANGER OUTLETS SUBJECT AREA  
 HIGHWAY 417

**LEGEND**

**SEAL**

**IBI GROUP**  
 400 - 333 Preston Street  
 Ottawa ON K1S 5M4 Canada  
 tel 613 225-1211 fax 613 225-9868  
 ibigroup.com

**PROJECT**  
**THE BURROUGHS KANATA**  
 8555 CAMPEAU DRIVE

**PROJECT NO:** 127255  
**DRAWN BY:** R.S.  
**PROJECT MGR:** T.M.  
**SHEET TITLE:** LANDSCAPE DETAILS

**PROJECT NO:** 127255  
**DRAWN BY:** R.S.  
**PROJECT MGR:** T.M.  
**SHEET TITLE:** LANDSCAPE DETAILS

**SHEET NUMBER:** LD2  
**ISSUE:** 1

File Location: \\172255\_8555campeau\7\_0\_Production\03\_Design\05\_Landscape\Sheet127255\_L.dwg  
 Last Saved: May 13, 2021, 4:02:14 PM by Raahika Sherry  
 Plotted: Thursday, May 13, 2021, 4:02:14 PM by Raahika Sherry  
 Scale: 1:1