

TOPOGRAPHIC SKETCH OF
BLOCK 2
REGISTERED PLAN 4M-1554
(AND PART OF HUNTMAR ROAD
(GEOGRAPHIC TOWNSHIP OF HUNTLEY))

CITY OF OTTAWA

Scale 1:500
0 10 20 30 METRES

Stantec Geomatics Ltd.
ONTARIO LAND SURVEYORS

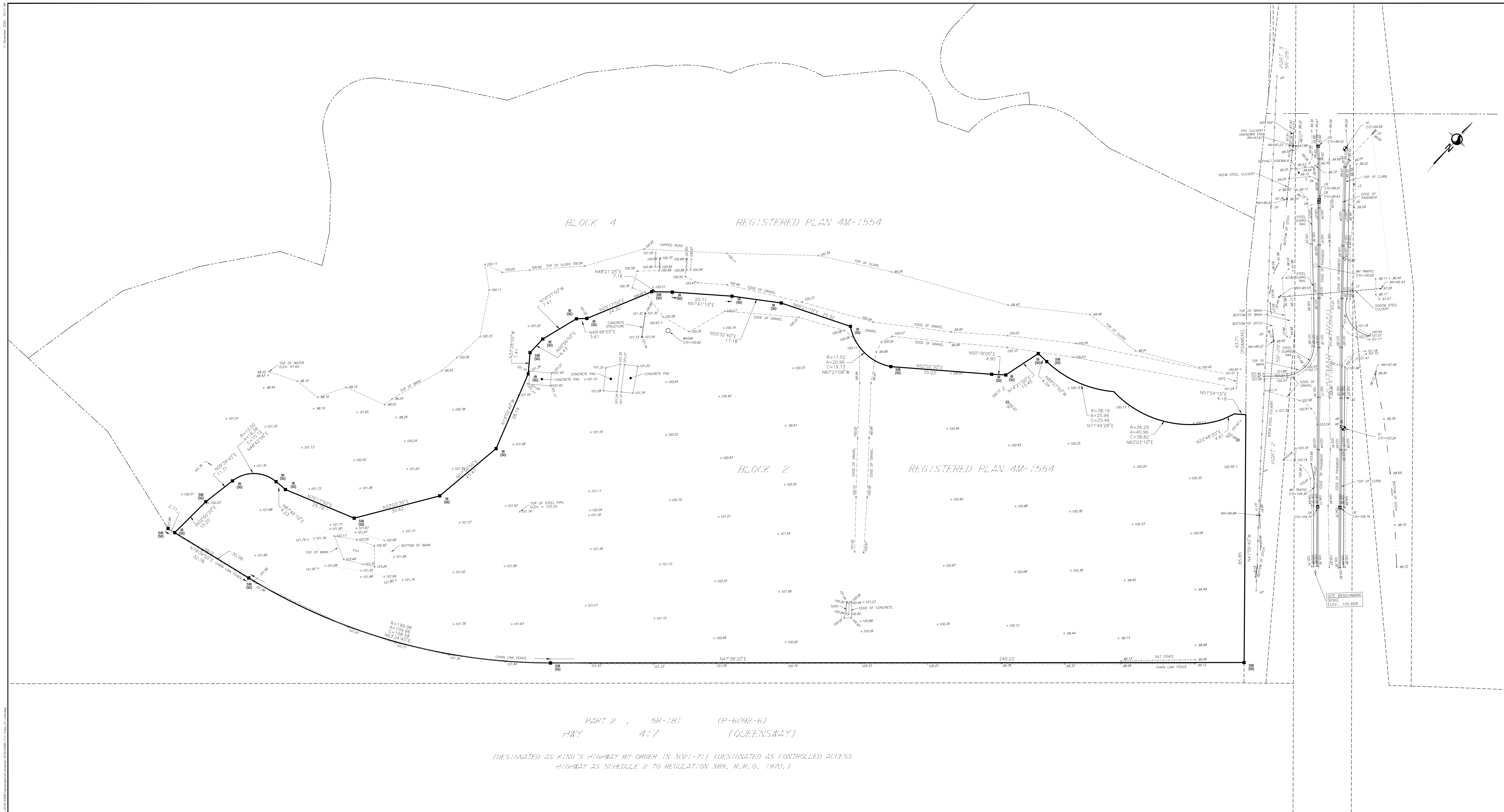
BOUNDARY NOTE
BOUNDARY LINEWORK AND INFORMATION IS COMPILED FROM REGISTERED PLAN 4M-1554 AND IS NOT BASED ON ACTUAL SURVEY.

METRIC CONVERSION
DISTANCES AND COORDINATES SHOWN ON THIS PLAN ARE IN METRES AND CAN BE CONVERTED TO FEET BY DIVIDING BY 0.3048

VERTICAL DATUM NOTE
ELEVATIONS ARE OF GEODETIC AND ARE DERIVED FROM CONTROL MONUMENT NO. 19781211 (DESTROYED) HAVING AN ELEVATION OF 107.635m.

LEGEND	
■	DENOTES
□	FOUND MONUMENTS
▣	SET MONUMENTS
IB	IRON BAR
IBR	ROUND IRON BAR
ISB	STANDARD IRON BAR
SSB	SHORT STANDARD IRON BAR
CC	CUT CROSS
CP	CONCRETE PIN
WIT	WITNESS
PIN	PROPERTY IDENTIFICATION NUMBER
M/MEAS	MEASURED
PROP	PROPORTIONED
OU	ORIGIN UNKNOWN
STANTEC	STANTEC GEOMATICS LTD.
CB	CATCH BASIN
GV	GAS VALVE
LS	LIGHT STANDARD
PBX	PULL BOX
MHSA	MAINTENANCE HOLE SANITARY
MHST	MAINTENANCE HOLE STORM
MHT	MAINTENANCE HOLE TRAFFIC
TP	TEST PIT
UP	UTILITY POLE
VB	VALVE BOX
VC	VALVE CHAMBER

OVERHEAD WIRE



PART 2 . 5R-181 (P-6092-6)
HWY 417 (QUEENSWAY)
(DESIGNATED AS KING'S HIGHWAY BY ORDER IN 3021-71) (DESIGNATED AS CONTROLLED ACCESS
HIGHWAY AS SCHEDULE 2 TO REGULATION 389, R.R.O. 1970.)

THE SURVEY WAS COMPLETED ON THE 7TH DAY OF NOVEMBER, 2020.