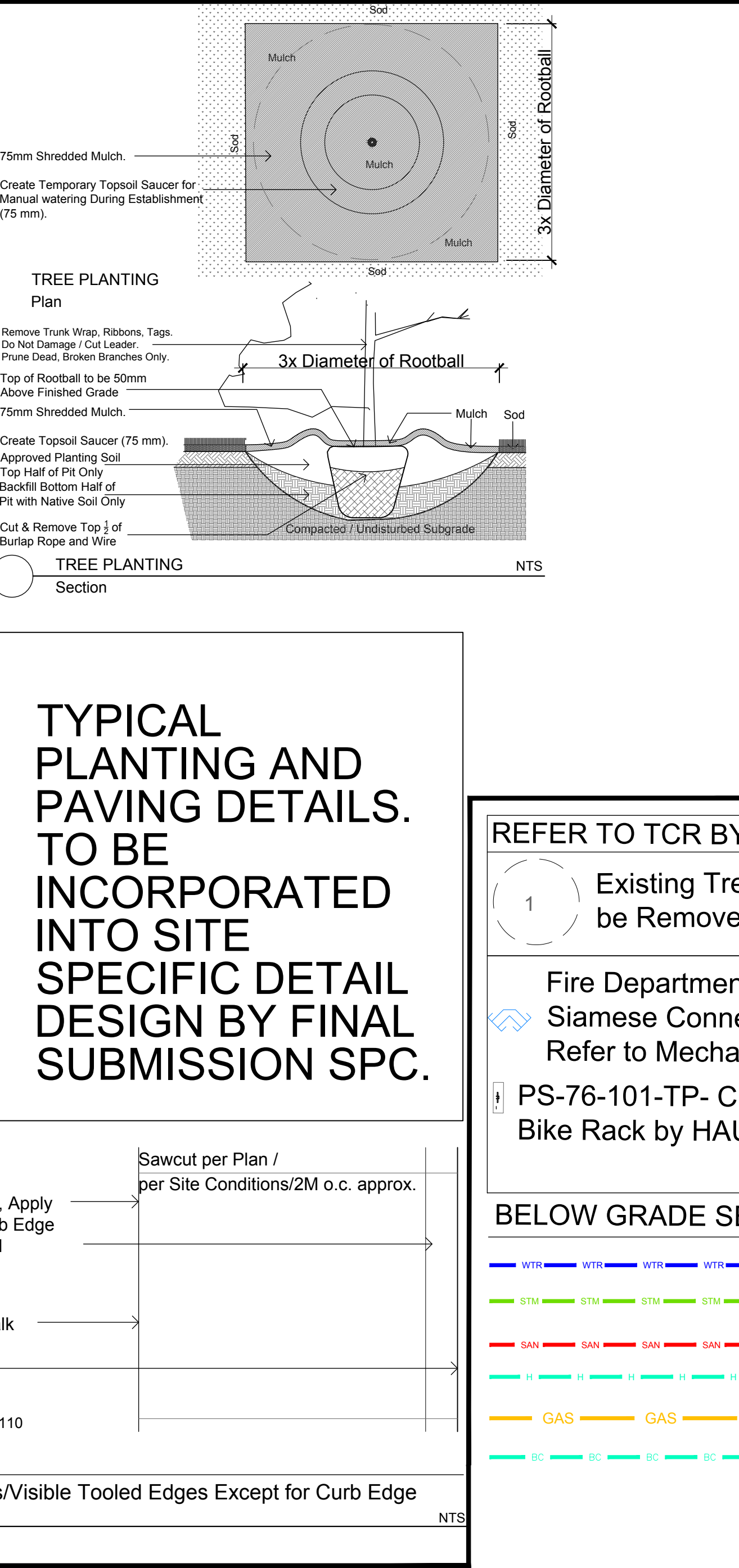
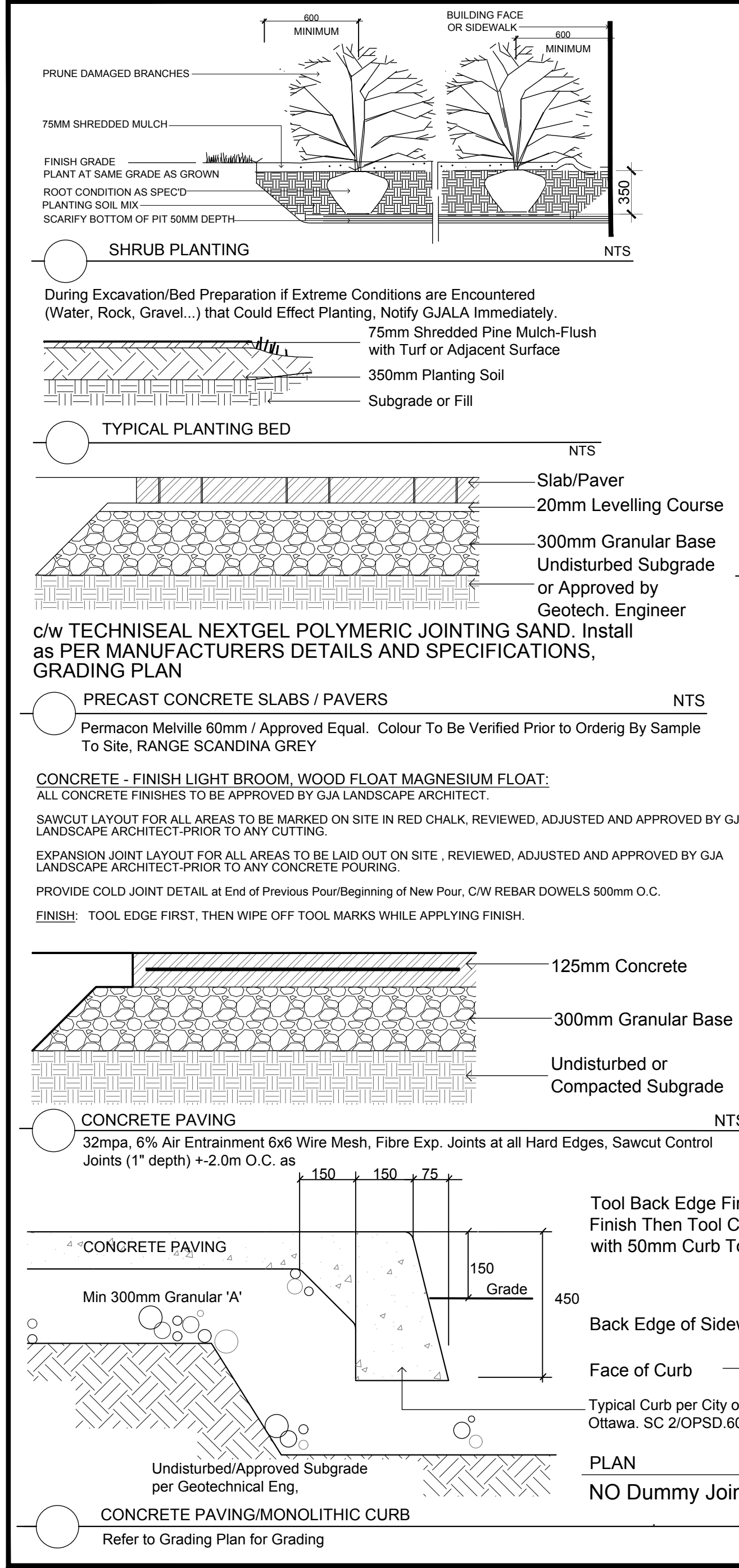
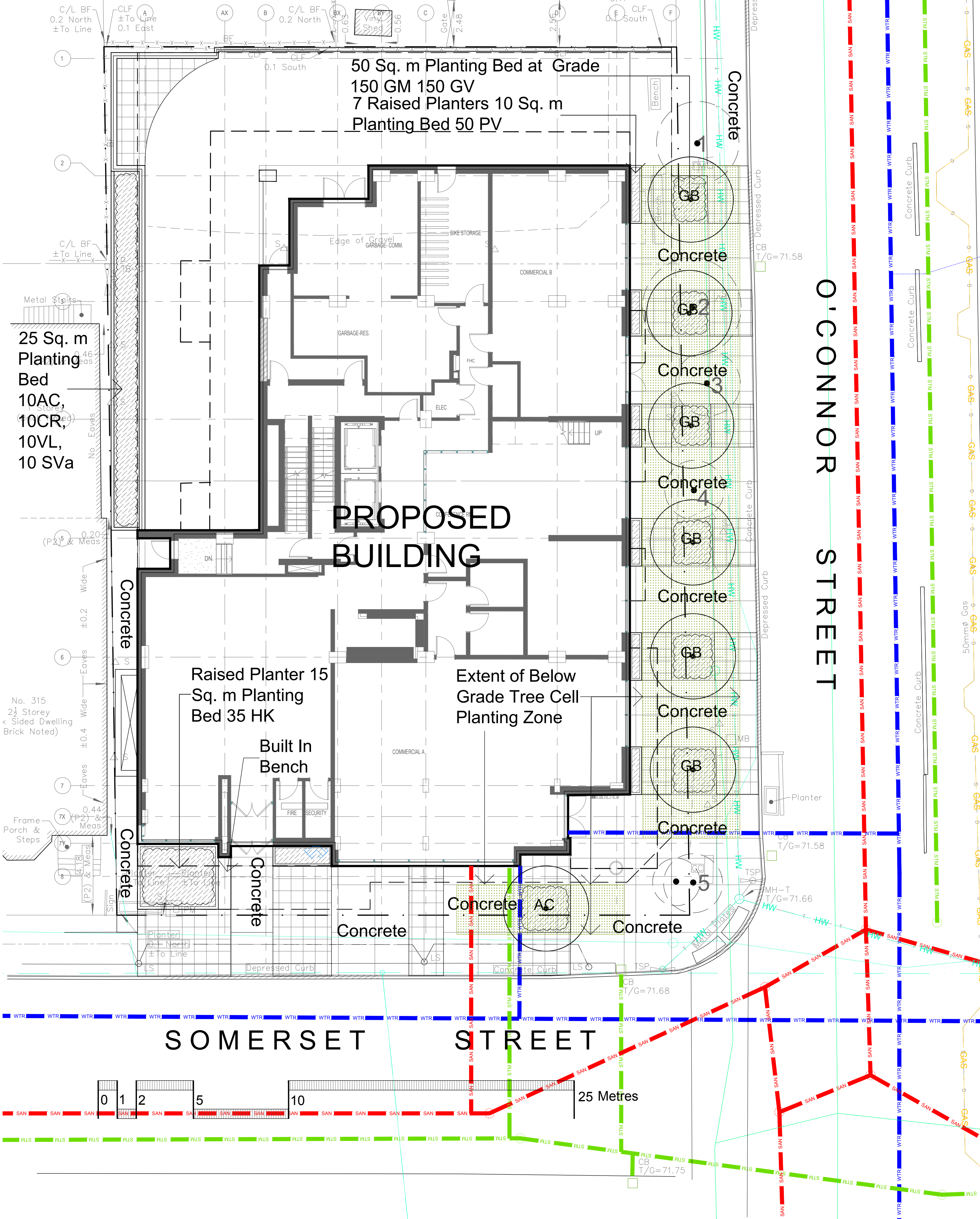


TREES - 311 SOMERSET STREET & 234-236 O'CONNOR STREET					
Code	Qty.	Botanical Name	Common Name	Size	Condition
AC	2	Amelanchier canadensis	Serviceberry	60mm cal	B + B specimen
GB	5	Ginkgo biloba	Maidenhair Tree	80mm cal	B + B specimen

SHRUBS - 311 SOMERSET STREET & 234-236 O'CONNOR STREET					
Code	Qty.	Botanical Name	Common Name	Size	Condition
AC	10	Amelanchier canadensis	Serviceberry	60cm HT.	Pot
CR	10	Cornus racemosa	Grey Dogwood	50cm HT.	Pot
HK	50	Hypericum kalimianum	St. John's Wort	30cm HT.	Pot
SO	15	Symphoricarpos albus	Snowberry	40cm HT.	Pot
SA	15	Sarrea illia	Meadowweet	50cm HT.	Pot
SV	10	Syringa vulgaris 'Alba'	White Common Lilac	60cm HT.	Pot
VL	10	Viburnum lentago	Nannyberry	60cm HT.	Pot

PERENNIALS / GROUND COVER - 311 SOMERSET STREET & 234-236 O'CONNOR STREET				
Code	Qty.	Botanical Name	Common Name	Condition
GM	150	Geranium macrorrhizum	Bigroot Geranium	9cm Pot
GP	150	Geranium psilostemon 'Gerwat'	Rozanne Geranium	9cm Pot
PV	50	Panicum virgatum	Switch Grass	9cm Pot



TYPICAL PLANTING AND PAVING DETAILS. TO BE INCORPORATED INTO SITE SPECIFIC DETAIL DESIGN BY FINAL SUBMISSION SPC.

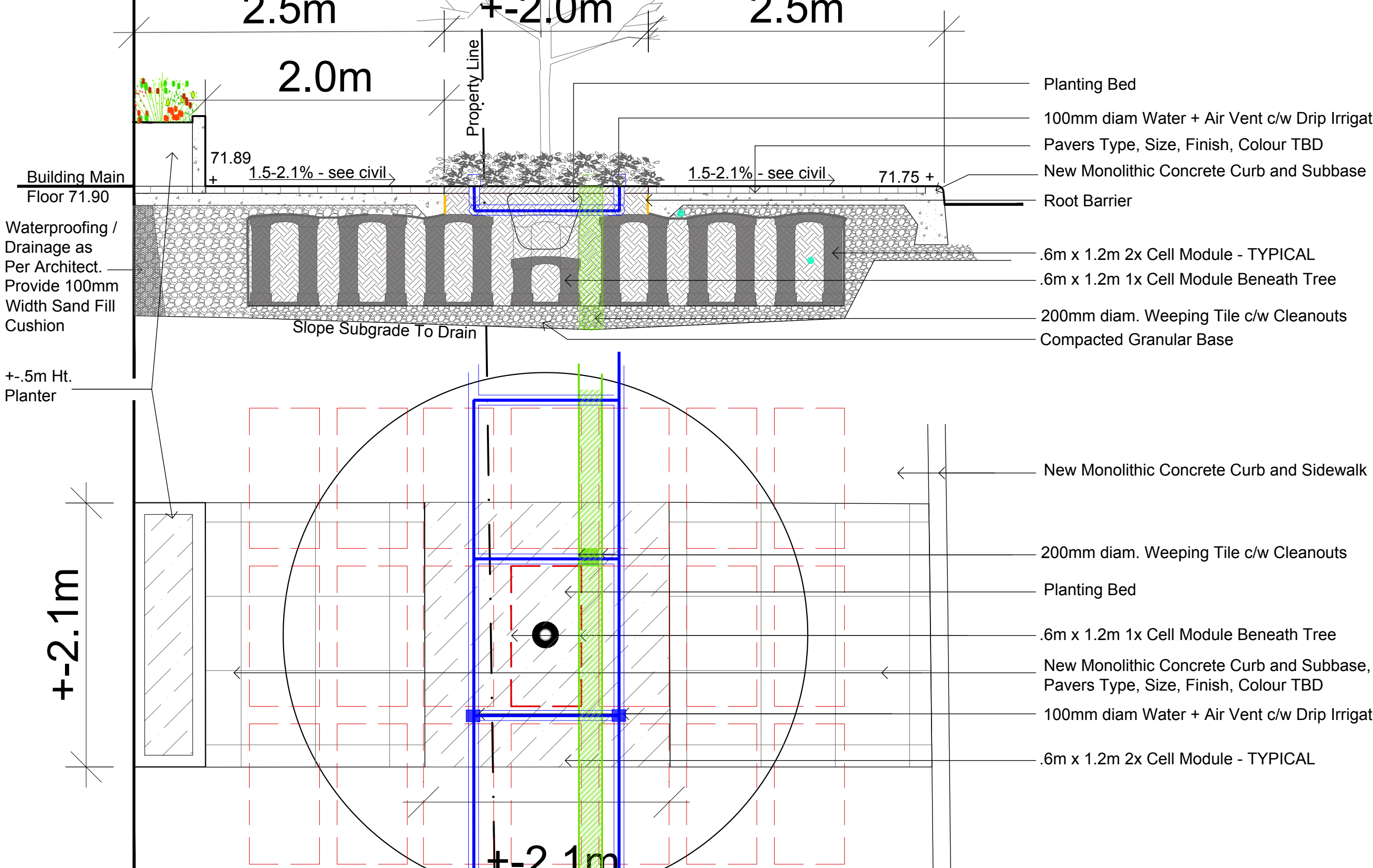
Drawing Remains the Property of/Copyright Reserved by Gino J. Aiello Landscape Architect. Do Not Use or Reproduce Without Approval of Gino J. Aiello. NOT To Be Used For Construction Unless indicated by Revision: "FOR LANDSCAPE CONSTRUCTION". Contractor is Responsible for Verification of Site Locations of all Utilities. Report any Discrepancies Between Site and Drawing Immediately to Gino J. Aiello. Do NOT Proceed Until Clarified.

TURF AREAS TO BE Sod c/w 150mm DEPTH TOPSOIL ON APPROVED SUBGRADE | Sod TO BE #1 GRADE TURFGRASS NURSERY Sod per NSGA - Fine Fescue/Kentucky Bluegrass Sod | PLANTING MIX TO BE APPROVED BY LANDSCAPE ARCHITECT | PLANT MATERIAL TO MEET CNLA STANDARDS/BE APPROVED BY LANDSCAPE ARCHITECT PRIOR TO PLANTING | ALL MATERIALS & WORK TO BE MAINTAINED UNTIL FINAL ACCEPTANCE. (MOWING TURF, WEEDING BEDS, WATERING TURF & PLANTS) & INCLUDE 1 YEAR WARRANTY FROM DATE OF FINAL ACCEPTANCE | PROVIDE WATERING OF ALL PLANT MATERIAL AS REQUIRED FOR PROPER ESTABLISHMENT, UNTIL END OF WARRANTY PERIOD | REFER TO CIVIL ENGINEER'S DRAWING FOR ELEVATIONS / GRADING |

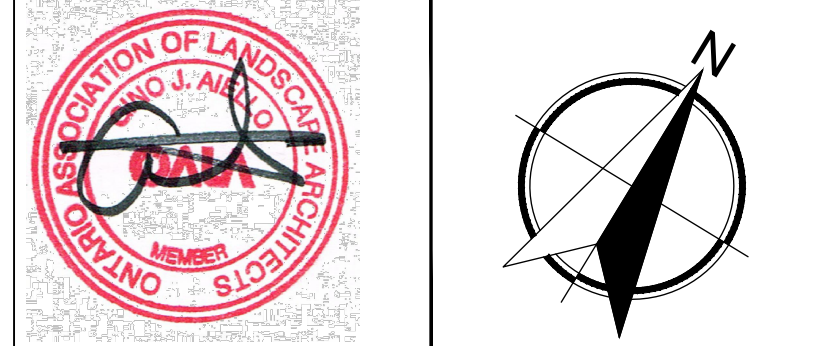
The Landscape Plan is to be read in conjunction with the grading, servicing, site and survey plan | Bare root material to be planted in season only | All plant material locations to be staked on site by the landscape contractor and checked by the landscape architect prior to planting | All trees to be preserved on or directly adjacent to the site will be protected | Plant material are to be installed a minimum of, 3.0m away from any part of any hydro transformer, 3.0m corridor between a fire hydrant and the curb, a 2.5m radius beside or behind a fire hydrant, 2.0m from any servicing/utility line or structure |

REFER TO TCR BY IFS		LANDSCAPE PLAN LEGEND	
1	Existing Tree to be Removed	GR	Proposed Deciduous Tree
	Fire Department - Siamese Connection Refer to Mechanical		Proposed Planting Bed
	PS-76-101-TP- Circum Bike Rack by HAUSER		Proposed Pavers
			Proposed Approximate Limit of Below Grade Soil Cell Planting Area

BELOW GRADE SERVICES REFER TO CIVIL /CUP	
WTR	U/G Water Service
STM	U/G Storm Service
SAN	U/G Sanitary Service
H	O/H Hydro Service
GAS	U/G Gas Service
BC	U/G TelCo Service



No.	Revision	Date
2	FIRST SUBMISSION SPC	FEBRUARY 18 2021
1	FOR REVIEW / COORDINATION	JANUARY 2021



Property Owner: **GEMSTONE Corporation**
252 Argyle Avenue Ottawa Ontario K2P 1B9

GJA Inc. GJALA.com
110 Didsbury Road Unit # 9 | Ottawa Ontario | K2T 0C2

Project: **16 Storey Residential Building**
311 Somerset Street West 234-236 O'connor Street

Drawing: **Landscape Plan**
DECEMBER 2020 Sheet Number: **L1**
City of Ottawa Dwg - #####
1:125

D07-###