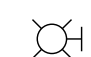

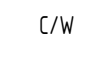



GENERAL NOTES:



1. THESE DRAWING IS NOT TO BE USED FOR CONSTRUCTION.
2. ALL WORK SHALL BE CARRIED OUT IN ACCORDANCE WITH:
  - A) ELECTRICAL DRAWING E1, NOTES, AND
  - B) ALL APPLICABLE CODES, BYLAWS AND BEST-RECOMMENDED PRACTICES.
3. DURING TENDER PHASE, CONTRACTORS SHALL FAMILIARIZE THEMSELVES WITH THE TENDER DRAWINGS AND THE PROJECT SITE, AND REPORT TO THE ENGINEER ANY CONFLICTS OR SITE CONDITIONS WHICH MAY AFFECT WORK. IF THIS PROCEDURE IS NOT FOLLOWED, THE CONTRACTORS WILL BE RESPONSIBLE TO COMPLETE WORK REQUIRED AT NO EXTRA COSTS.
4. FOR THE PURPOSES OF THIS PROJECT, "PROVIDE" SHALL MEAN TO SUPPLY, INSTALL, CONNECT AND TEST.
5. THIS DRAWING WAS PREPARED BASED ON THE AVAILABLE BUILDING DRAWING PROVIDED BY THE ARCHITECT. EXISTING SITE CONDITIONS ARE SHOWN AS ACCURATELY AS POSSIBLE. THERE IS THE POSSIBILITY THAT CONDITIONS SHOWN ARE NOT EXACTLY AS EXISTING. CONTRACTOR SHALL VERIFY ALL DIMENSIONS, ELEVATIONS, LOCATIONS, SIZES, AND CONDITIONS AT THE SITE PRIOR TO COMMENCING ANY LAYOUT OR INSTALLATION WORK.
6. PROVIDE WALL PENETRATIONS REQUIRED TO RUN NEW CONDUITS AND CABLES. PERFORM SCANNING PRIOR TO CORE DRILLING ANY NEW OPENINGS THROUGH A STRUCTURAL ELEMENT AND ENSURE THAT NO REINFORCING BARS ARE CUT WITHOUT THE APPROVAL OF A LICENSED STRUCTURAL ENGINEER AND THE BUILDING OWNER.
7. PROVIDE ALL REQUIRED LADDERS, RIGGING, HOISTING, AND ALL OTHER EQUIPMENT TO FULLY COMPLETE THE WORK REQUIRED UNDER THIS PROJECT.
8. UPON FINAL COMPLETION, PROVIDE AS-BUILT DRAWINGS THAT SHALL INCLUDE MARK-UPS OF THE FINAL LOCATIONS AND DEPTHS OF ALL THE UNDERGROUND CONDUITS OR CABLES.
9. PRIOR TO ENERGIZING ANY NEW WIRING, PERFORM INSULATION RESISTANCE TESTS ON ALL NEW AND EXISTING WIRING AND EQUIPMENT PART OF THIS PROJECT. TEST AND CHECK THE ELECTRICAL SYSTEMS PERTAINING TO THIS PROJECT FOR THEIR CORRECT OPERATION.
10. ENGAGE AND PAY FOR A THIRD-PARTY FIRM OR INDIVIDUAL SPECIALIZED IN TESTING LIGHTING CONTROLS TO TEST ALL NEW LIGHTING CONTROL DEVICES AND/OR CONTROL SYSTEMS PERTAINING TO THIS PROJECT. LIGHTING CONTROL DEVICES AND CONTROL SYSTEMS SHALL BE TESTED TO ENSURE, AS APPLICABLE, THAT CONTROL HARDWARE AND SOFTWARE ARE CALIBRATED, ADJUSTED, PROGRAMMED, AND IN PROPER WORKING CONDITION IN ACCORDANCE WITH THE CONSTRUCTION DOCUMENTS AND MANUFACTURER'S INSTALLATION INSTRUCTIONS. THE THIRD-PARTY LIGHTING SPECIALIST RESPONSIBLE FOR THIS FUNCTIONAL TESTING SHALL NOT BE DIRECTLY INVOLVED IN CONSTRUCTION OF THE PROJECT AND SHALL PROVIDE DOCUMENTATION CERTIFYING THAT THE INSTALLED LIGHTING CONTROLS MEET OR EXCEED ALL DOCUMENTED PERFORMANCE CRITERIA. ENSURE THAT THE CITY BUILDING OFFICIAL IS SATISFIED WITH THE CERTIFYING DOCUMENTATION'S FORMAT AND CONTENT PRIOR TO SUBMITTING IT.

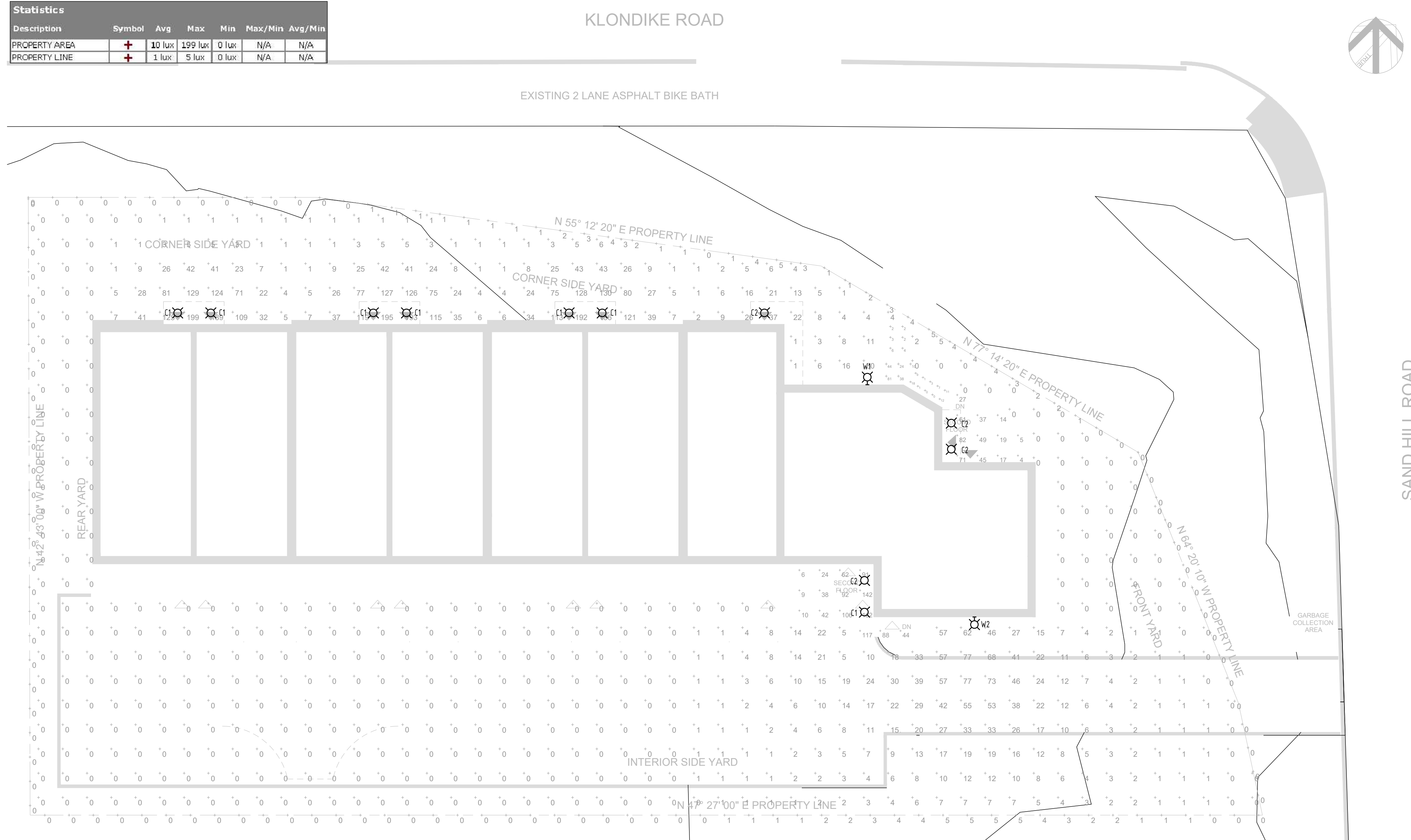
ELECTRICAL LEGEND

-  BUILDING WALL-MOUNT LIGHT FIXTURE
-  RECESSED LIGHT FIXTURE
-  COMPLETE WITH
-  ABOVE FINISH GRADE

EXTERIOR LIGHTING - LUMINAIRE SCHEDULE

TYPE	DESCRIPTION	MOUNTING	LAMPS	OPTIC DISTR.	CONTROL
W1	LED WALL PACK EQUAL TO LITON W01 SERIES, HOUSING DIE-CAST ALUMINUM, SLEEK ARCHITECTURAL DESIGN, OPTICAL SYSTEM FULL CUT-OFF, BLACK FINISH, IP65, -30 DEGREES CELSIUS TO 50 DEGREES CELSIUS, C/W BUTTON-STYLE PHOTOCELL, IDA DARK-SKY APPROVED, 120V 0-10V DIMMING DRIVER, 5-YEAR WARRANTY	WALL-MOUNT 2.3M AFG	11W LED 850 LUMENS, 4000K, 86CRI	N/A	INTEGRAL SENSOR
W2	WALL-MOUNT LED LUMINAIRE EQUAL TO GARDOCO BY SIGNIFY PUREFORM WALL SCONCE SERIES, FINISH BLACK, 0% UPLIGHT (U0 PER IESNA TM-18), DIE-CAST ALUMINUM ALLOY HOUSING, BI-LEVEL INFRARED MOTION RESPONSE EQUIPPED WITH PIR MOTION/AMBIENT SENSOR THAT SWITCH TO 50% DIMMED OUTPUT STATE, RATED OPERATING TEMPERATURE -40 TO 40 DEGREE CELSIUS, IP65 RATED, 120-277V DRIVER EFFICIENCY-90%, THD-20%, IDA DARK SKY APPROVED, DLC QUALIFIED, 5-YEAR WARRANTY	WALL-MOUNT 3M AFG	52.2W LED, 5,597 LUMENS, 4000K, 70CRI, 100,000 HOURS RATED LIFE AT L70	TYPE 2	INTEGRAL SENSOR
C1	DOWNLIGHT 4" LED LUMINAIRE EQUAL TO LIGHTOLIER BY SIGNIFY PAR 4" ROUND APERTURE, FINISH WHITE, 60 DEGREE CUTOFF, ANODIZED REFLECTOR SPECULAR CLEAR, 20 GAGE GALVANIZED STEEL CONSTRUCTION, EQUIPPED WITH PIR MOTION AND PHOTOCELL SENSOR, RATED OPERATING TEMPERATURE -20 TO 30 DEGREE CELSIUS, 120-277V DRIVER EFFICIENCY-90%, THD-20%, ENERGY STAR QUALIFIED, 5-YEAR WARRANTY	CANOPY	15W LED, 1,500 LUMENS, 4000K, 80CRI, 60,000 HOURS RATED LIFE AT L80	DL	INTEGRAL SENSOR
C2	DOWNLIGHT 4" LED LUMINAIRE EQUAL TO LIGHTOLIER BY SIGNIFY PAR 4" ROUND APERTURE, FINISH WHITE, 60 DEGREE CUTOFF, ANODIZED REFLECTOR SPECULAR CLEAR, 20 GAGE GALVANIZED STEEL CONSTRUCTION, EQUIPPED WITH PIR MOTION AND PHOTOCELL SENSOR, RATED OPERATING TEMPERATURE -20 TO 30 DEGREE CELSIUS, 120-277V DRIVER EFFICIENCY-90%, THD-20%, ENERGY STAR QUALIFIED, 5-YEAR WARRANTY	CANOPY	7W LED, 500 LUMENS, 4000K, 80CRI, 60,000 HOURS RATED LIFE AT L80	DL	INTEGRAL SENSOR

Description	Symbol	Avg	Max	Min	Max/Min	Avg/Min
PROPERTY AREA		10 lux	199 lux	0 lux	N/A	N/A
PROPERTY LINE		1 lux	5 lux	0 lux	N/A	N/A



ISSUE	DESCRIPTION	CHECKED	DATE
1	ISSUED FOR SITE PLAN REVIEW	AB	2020-10-28
2	ISSUED FOR SITE PLAN REVIEW	AB	2021-04-08

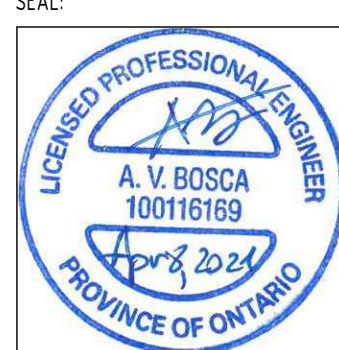
KEY PLAN

DRAWINGS ARE TO BE READ AS A PACKAGE AND ARE NOT INTENDED TO BE SEPARATED AND VIEWED INDIVIDUALLY BY DISCIPLINE.

DESIGNED BY:	AB
DRAWN BY:	JD
CHECKED BY:	AB
CLIENT:	D. G. BELFIE

PROJECT:  
**LOW RISE APARTMENT**  
1050 KLONDIKE ROAD, OTTAWA, ON

DRAWING TITLE:  
**ELECTRICAL SITE PLAN  
LIGHTING LAYOUT, LEGEND,  
LUMINAIRE SCHEDULE, AND NOTES**

SEAL:	SCALE: AS INDICATED
	SHEET NO: 1 OF 1
	PROJECT NO: 20040
	<b>E1</b>