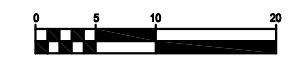
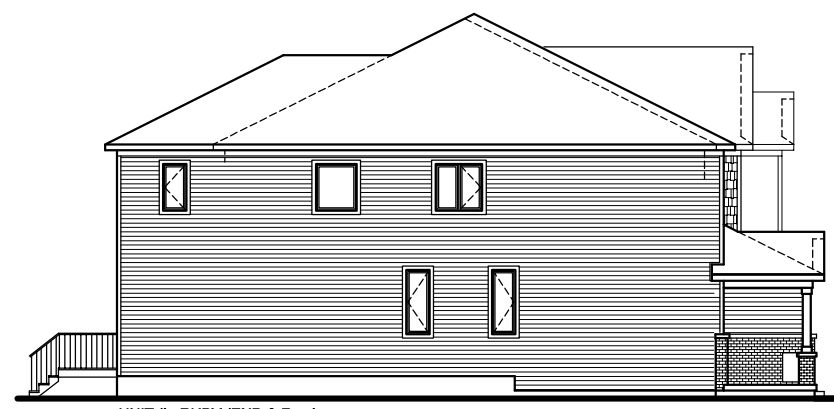


ELEVATIONS BLOCK 60

PART OF LOT 22
CONCESSION 4 (Rideau Front)
TOWNSHIP OF GLOUCESTER
Now CITY OF OTTAWA
BLOCK 60, PLAN 4M-1653



SCALE: 1/16" = 1'-0"



UNIT # - RUBY (END & Rev.)
LEFT SIDE ELEVATION

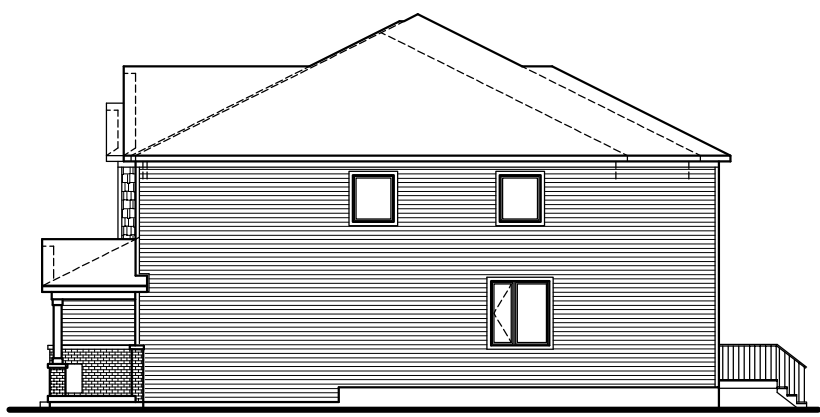


UNIT # - RUBY (END & Rev.)
FRONT ELEVATION

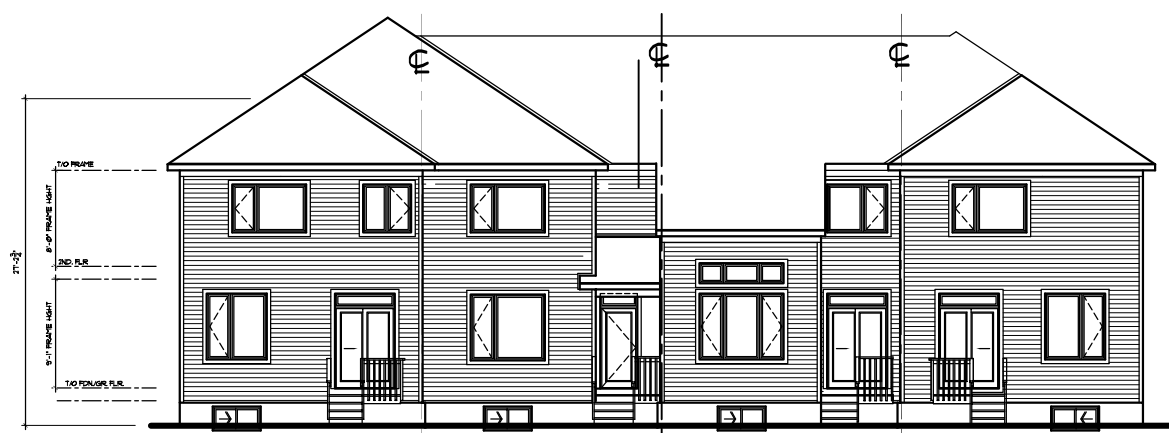
UNIT # - LEVI (INT.)
FRONT ELEVATION

UNIT # - SCARLET (INT. & Rev.)
FRONT ELEVATION

UNIT # - EVERITT (END)
FRONT ELEVATION



UNIT # - EVERITT (END)
RIGHT SIDE ELEVATION



UNIT # - EVERITT (END)
REAR ELEVATION

UNIT # - SCARLET (INT.)
REAR ELEVATION

UNIT # - LEVI (INT.)
REAR ELEVATION

UNIT # - RUBY (END & Rev.)
REAR ELEVATION

APPROVED
By Sean Moore at 3:46 pm, Dec 09, 2021

SEAN MOORE
(A) MANAGER, SOUTH BRANCH
PLANNING, INFRASTRUCTURE & ECONOMIC
DEVELOPMENT DEPARTMENT, CITY OF OTTAWA

2			
1	ISSUED FOR COMMENTS	JV	05.20.2021
NO.	REVISION	BY	DATE

PROJECT:
PATHWAYS - BLOCK 60

DRAWING #
EQ BLOCK 4-5 UNITS