

**PROJECT DATA**  
 ZONING DESIGNATION: "IL-9"  
 PROPOSED USE: Light Industrial Sortation Centre and Office  
**SITE AREA:**  
 TOTAL SITE AREA: 305,807.6m<sup>2</sup> (75.56 ACRES)  
 SITE "A"  
 AREA OF DEVELOPMENT: 162,570.3m<sup>2</sup> (40.17 ACRES)  
 SITE "B"  
 AREA OF DEVELOPMENT: 27,974.08m<sup>2</sup> (6.91 ACRES)  
 SITE "C"  
 AREA OF DEVELOPMENT: 115,263.3m<sup>2</sup> (28.48 ACRES)

**WARE MALCOMB**  
 Leading Design for Commercial Real Estate

architecture  
 planning  
 interiors  
 graphics  
 civil engineering  
 402 West Broadway, Suite 1560  
 San Diego, CA 92101  
 P: 619.594.5138

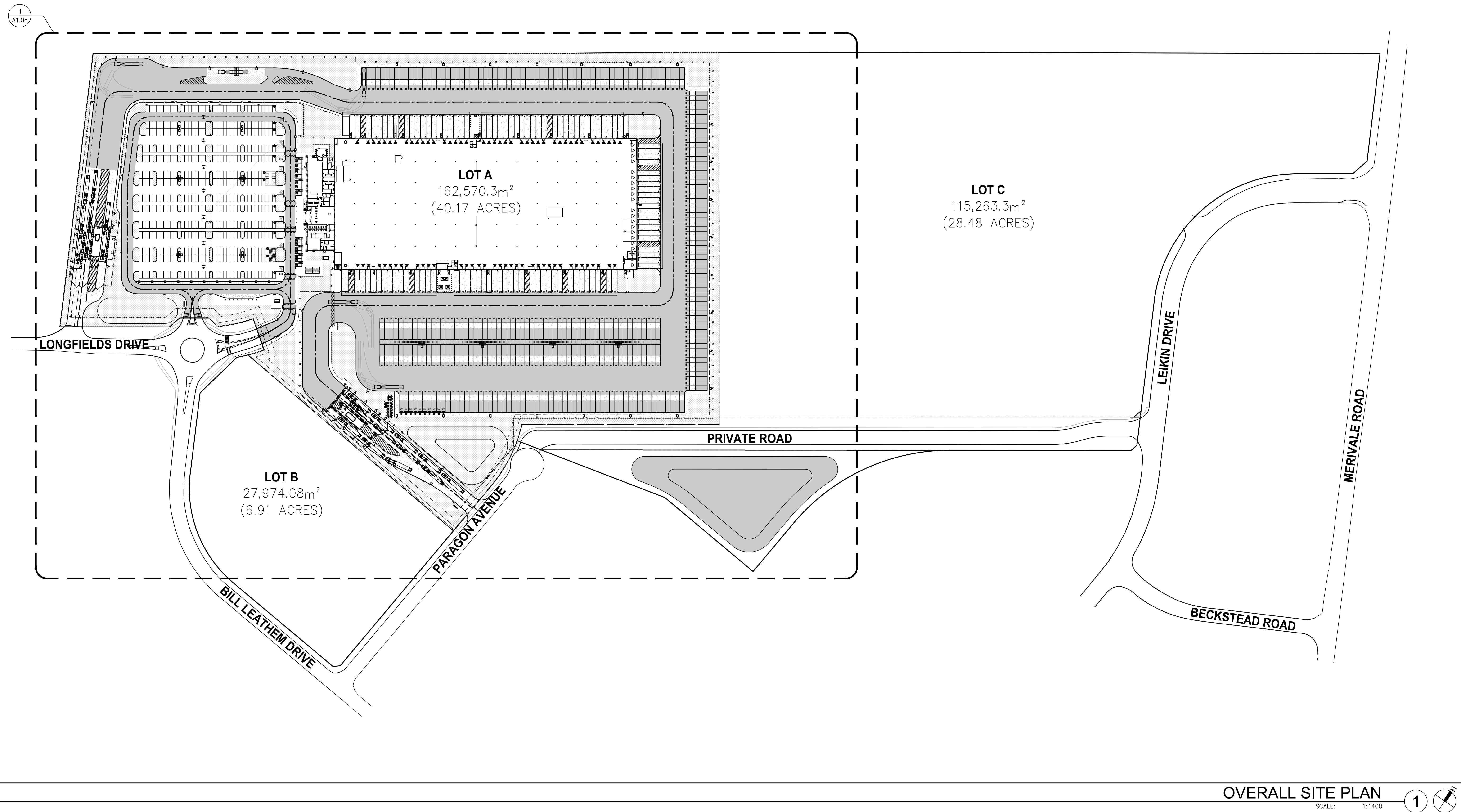


**SORTATION FACILITY**  
 99 BILL LEATHAM DRIVE, 2 LEIKIN DRIVE  
 AND 20 LEIKIN DRIVE  
 OTTAWA, ONTARIO

OVERALL SITE PLAN	
REMARKS	
DATE	2021-05-31
ISSUE FOR SITE PLAN APPROVAL	

PA/PM:	A. SANABRIA
DRAWN BY:	D.V.
JOB NO.:	TOR21-5008

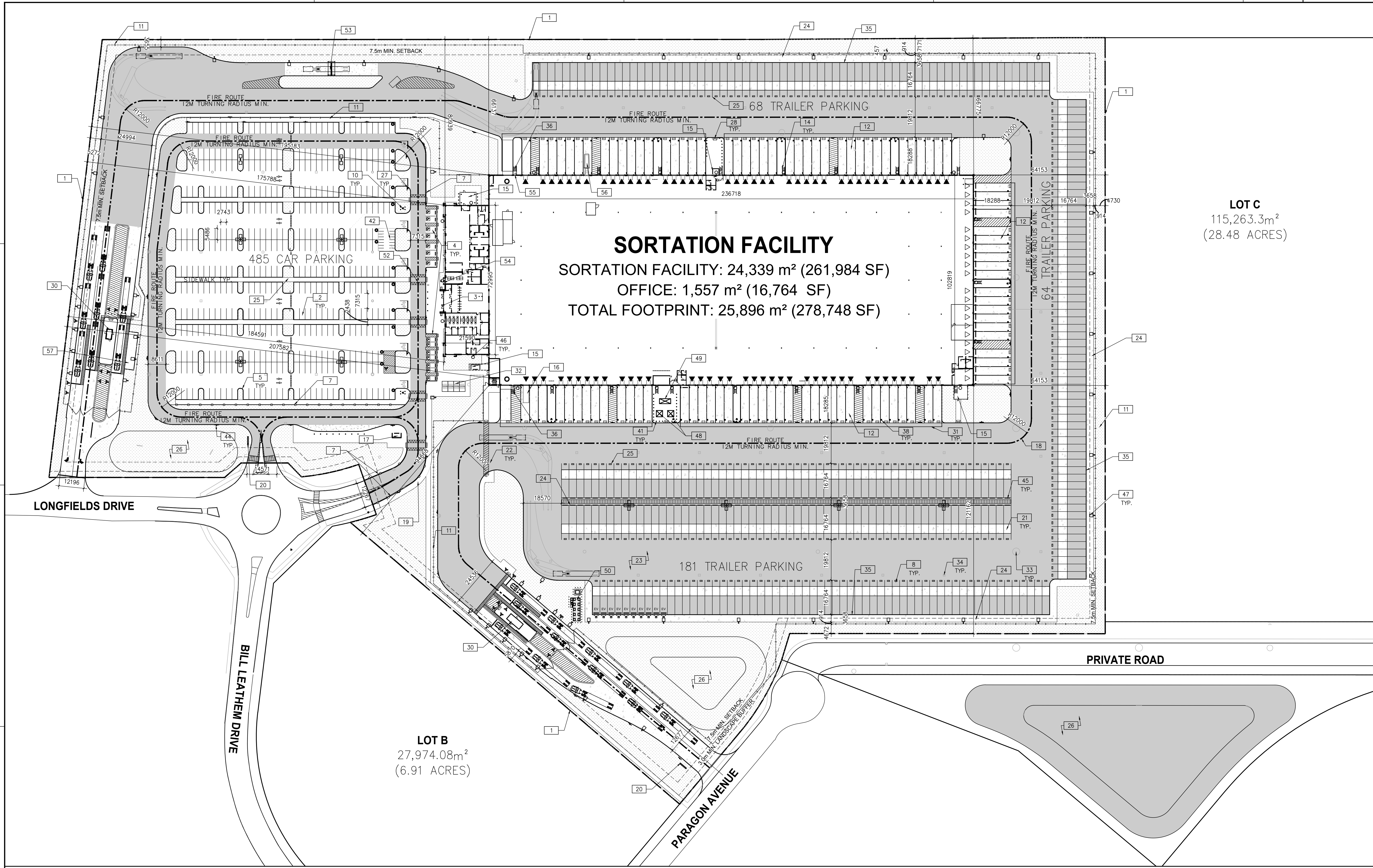
SHEET  
**A1.0**



**OVERALL SITE PLAN**  
 SCALE: 1:1400

SITE LEGEND	
	HEAVY DUTY PAVEMENT (HATCHED) REFER TO CIVIL DWG'S
	LANDSCAPED AREA (HATCHED) REFER TO LANDSCAPE DWG'S
	CARPOOL SPACE (HATCHED)
	FIRE ACCESS ROUTE WITH 12.0M TURNING RADIUS
	TRUCK LOADING DOCK DOOR
	SERVICE DOOR
	KNOCKOUT PANEL
	FIRE DEPT CONNECTION (VERIFY LOCATION WITH CIVIL DRAWINGS)
	PROPOSED FIRE HYDRANT (VERIFY LOCATION WITH CIVIL DRAWINGS)
	PROPOSED PIV (VERIFY LOCATION WITH CIVIL DRAWINGS)
	EXISTING FIRE HYDRANT (VERIFY LOCATION WITH CIVIL DRAWINGS)
	PROPOSED WALL MOUNTED LIGHTING (VERIFY WITH ELECTRICAL DRAWINGS)
	PROPOSED STOP SIGN
	PROPOSED LIGHTING POLE (VERIFY WITH ELECTRICAL DRAWINGS)
	FIRE ACCESS ROUTE SIGN

THESE DRAWINGS AND SPECIFICATIONS ARE THE PROPERTY AND COPYRIGHT OF WARE MALCOMB AND SHALL NOT BE USED ON ANY OTHER WORK EXCEPT BY AGREEMENT WITH WARE MALCOMB. WRITTEN DIMENSIONS SHALL TAKE PRECEDENCE OVER SCALED DIMENSIONS AND SHALL BE VERIFIED ON THE JOB SITE. ANY DISCREPANCY SHALL BE BROUGHT TO THE NOTICE OF WARE MALCOMB PRIOR TO THE COMMENCEMENT OF ANY WORK.



**SORTATION FACILITY**  
 SORTATION FACILITY: 24,339 m<sup>2</sup> (261,984 SF)  
 OFFICE: 1,557 m<sup>2</sup> (16,764 SF)  
 TOTAL FOOTPRINT: 25,896 m<sup>2</sup> (278,748 SF)

**LOT C**  
 115,263.3m<sup>2</sup>  
 (28.48 ACRES)

**LOT B**  
 27,974.08m<sup>2</sup>  
 (6.91 ACRES)

**OVERALL SITE PLAN - SITE A**  
 SCALE: 1:800

**PROJECT DATA**  
 ZONING DESIGNATION: "IL-9"  
 PROPOSED USE: Light Industrial Sortation Centre and Office  
 SITE AREA:  
 TOTAL SITE AREA: 305,807.6m<sup>2</sup> (75.56 ACRES)  
 SITE "A" AREA OF DEVELOPMENT: 162,570.3m<sup>2</sup> (40.17 ACRES)  
 SITE "A" STATISTICS:  
 PAVED AREA 80,056.92 SM (861,735 SF)  
 LANDSCAPED AREA 34,135.39 SM (367,430 SF)  
 BUILDING AREA:  
 OFFICE 1,557 SM 16,764 SF  
 SORTATION FACILITY 24,339 SM 261,984 SF  
 TOTAL 25,896 SM 278,748 SF  
 GUARDHOUSE 39.52 SM 425.3 SF  
 (PRIMARY GUARDHOUSE 23.77 SM 277.3 SF)  
 (SECONDARY GUARDHOUSE 13.75 SM 148 SF)  
 GROSS LOT COVERAGE 15.92%

**ZONING BY-LAW MATRIX**

ZONING STANDARD	REQUIREMENTS	PROPOSED
MIN. LOT AREA	3,000m <sup>2</sup>	140,529.8 sm
MIN. LOT WIDTH	50m	-
MAX. FLOOR SPACE INDEX	2.0	0.08 SM
MAX. BUILDING COVERAGE	60%	15.92%
MIN. FRONT YARD	6m	94.66m
MIN. CORNER SIDE YARD	6m	175.78m
MIN. REAR YARD	6m	74.36m
MIN. INTERIOR SIDE YARD	7.5m	64.15m
MAX. BUILDING HT.	22m	-
MIN. LANDSCAPING COVERAGE	N/A	20.99% GROSS
PAVED AREA	N/A	49.24% GROSS
<b>LANDSCAPE BUFFER</b>		
MIN. FRONT YARD	3.0m	5.87m
MIN. EXTERIOR SIDE YARD	0m	5.2m
MIN. REAR YARD	0m	3.6m
MIN. INTERIOR SIDE YARD	0m	4.1m

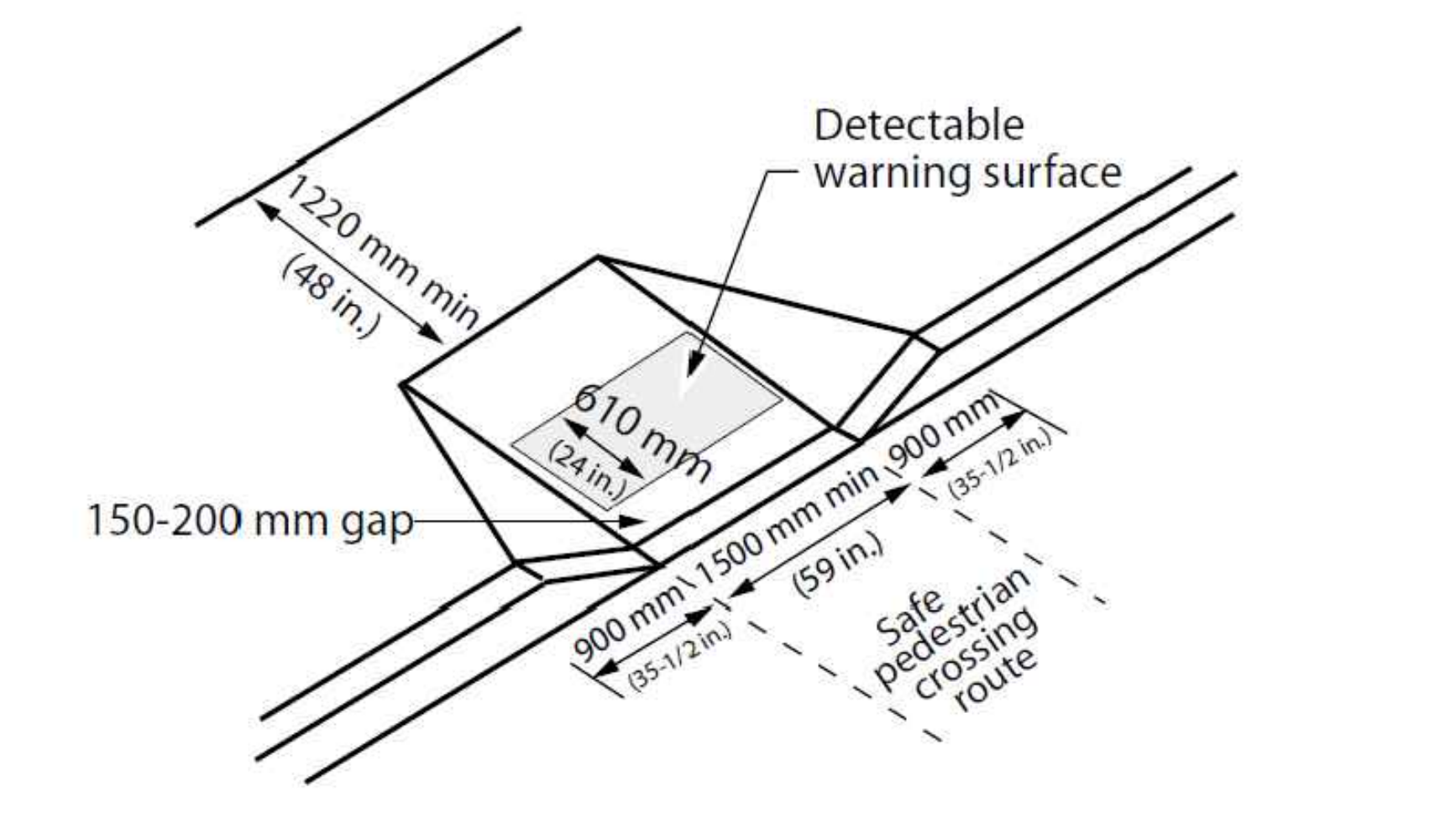
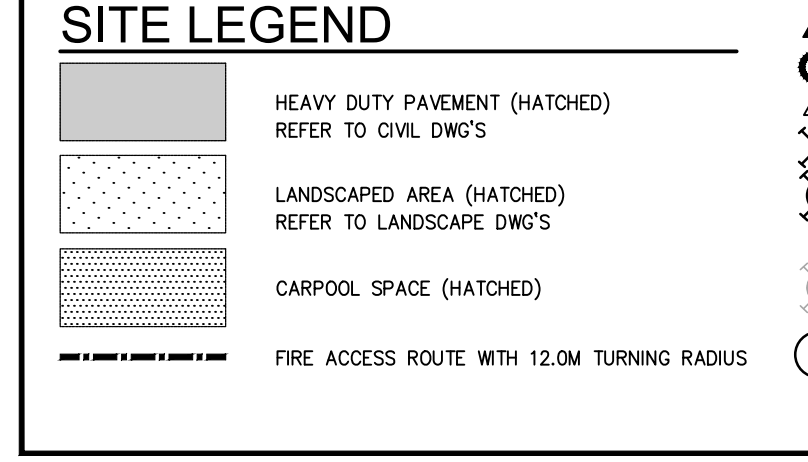
**PARKING REQUIREMENTS**

APPLICABLE PARKING STALL REQUIREMENTS:  
 MINIMUM EXTERIOR PARKING SPACE DIMENSION: 2.6M X 5.2M  
 INDUSTRIAL: 0.8 SPACES PER 100M<sup>2</sup> FOR FIRST 5000M<sup>2</sup> G.F.A  
 0.4 SPACES PER 100M<sup>2</sup> ABOVE 5000M<sup>2</sup> G.F.A  
 OFFICE: 2.4 SPACES PER 100M<sup>2</sup> OF G.F.A

	MIN RATE	REQUIREMENTS	PROPOSED	
<b>MOTORCYCLE PARKING REQUIREMENTS:</b>	-	-	16	
<b>BICYCLE PARKING REQUIREMENTS:</b>	-	-	32	
<b>CAR PARKING REQUIREMENTS:</b>				
	GFA	MIN RATE	REQUIREMENTS	PROPOSED
INDUSTRIAL	5,000 sm	0.8/100m <sup>2</sup>	40	
	19,348 sm	0.4/100m <sup>2</sup>	78	
OFFICE	1,557 sm	2.4/100m <sup>2</sup>	38	
	TOTAL		156	485

	REQUIREMENTS	PROPOSED
<b>ACCESSIBLE PARKING TOTAL</b>	12	14
TYPE A PARKING SPACES	6	7
TYPE B PARKING SPACES	6	7
<b>LOADING SPACES</b>	5	100
<b>DOCK DOORS</b>	-	79
<b>KNOCKOUT PANELS</b>	-	21

- GENERAL NOTES**
- PROPERTY LINE
  - 2743mmx5486mm PARKING STALL
  - PRINCIPLE ENTRY
  - BARRIER FREE ACCESSIBLE PARKING STALLS WITH PAINTED PARKING STRIPING WITH MINIMUM DIMENSIONS OF 3.4m BY 5.2m (TYPE A) AND 2.4m BY 5.2m (TYPE B) WITH 1.5m ACCESSIBLE AISLES ADJACENT.
  - 150mm WIDE CONCRETE CURB - REFER TO CIVIL DWG'S
  - POST INDICATOR VALVE. PROVIDE 4 BOLLARDS - REFER TO SPRINKLER DWG'S
  - DECORATIVE HALF-HEIGHT PEDESTRIAN GUARDRAIL - REFER TO LANDSCAPE
  - TRAILER PARKING
  - FIRE DEPARTMENT CONNECTION / SIAMASE
  - FIRE HYDRANT. PROVIDE 4 BOLLARDS - REFER TO SPRINKLER DWG'S
  - CHAIN LINK FENCE
  - CONCRETE APRON
  - LANDSCAPE AREA - SEE LANDSCAPE DWG.
  - EXTERIOR GALVANIZED STEEL STAIRS W/ TUBE STEEL GUARDRAIL. TYP.
  - SMOKER'S SHELTER
  - RECYCLING BIN
  - PREFABRICATED SHELTER & DROP-OFF AREA. PROVIDE CONCRETE PAD BASE.
  - FIRE ACCESS ROUTE W/ 12.0M TURNING RADIUS
  - 3m WIDE ASPHALT MULTI-USE PATH
  - MONUMENT SIGNAGE
  - CONCRETE DOLLY PAD
  - PEDESTRIAN PATHWAY YELLOW PAINTED LINES
  - HATCHED AREA DENOTES HEAVY DUTY ASPHALT TYPICAL FOR ALL AREAS REQUIRING FIRE TRUCK OR TRACTOR TRUCK ACCESS - REFER TO CIVIL DWG'S
  - INSPECTION SIDEWALK
  - MUSTER POINT
  - STORMWATER MANAGEMENT POND - REFER TO CIVIL DWG'S
  - PROPOSED STOP SIGN LOCATION
  - TYPICAL CURB RAMP - REFER TO DETAIL 2/A1.0
  - SIGHT TRIANGLE - REFER TO TRAFFIC
  - PRECAST GUARDHOUSE WITH TRUCK QUEUING
  - WARNING LINE
  - BIKE STORAGE
  - MANHOLE - REFER TO CIVIL DWG'S.
  - CATCH BASIN - REFER TO CIVIL DWG'S.
  - 305mm HIGH REQUIRED CONCRETE CURB
  - CONCRETE STAIR
  - RESERVED
  - LOADING DOCK LINEWORK AS PER CLIENT STANDARDS
  - RESERVED
  - SNOW STORAGE
  - CONCRETE SAFETY BOLLARD
  - 1420MM x 2840MM MOTORCYCLE PARKING SPACE
  - RESERVED
  - FIRE ROUTE ACCESS SIGNAGE
  - WHEELSTOPS
  - WALL PACK LIGHTING FIXTURE - REFER TO ELECTRICAL DWG'S
  - POLE LIGHTING FIXTURE - REFER TO ELECTRICAL DWG'S
  - PROPOSED TRANSFORMER - REFER TO ELECTRICAL DWG'S
  - PROPOSED GENERATOR - REFER TO ELECTRICAL DWG'S
  - ELECTRICAL VEHICLE CHARGING STATION - REFER TO ELECTRICAL DWG'S.
  - RESERVED
  - SPEED HUMP - LEVEL WITH SIDEWALK WITH NO CURB DEPRESSION
  - YETI SNOW REMOVAL
  - FLAG POLE
  - TOM DOOR
  - COMPACTOR
  - HOLSTER PARKING



**CURB RAMP DETAIL**  
 SCALE: NTS

**WARE MALCOLM**  
 Leading Design for Commercial Real Estate

architecture  
 planning  
 interiors  
 graphics  
 civil engineering

402 West Broadway, Suite 1560  
 San Diego, CA 92101  
 P: 619.594.5138

ONTARIO ASSOCIATION  
 OF ARCHITECTS  
*architects*  
 AMANDA LAROCHE-SABRIA  
 LICENCE 7712

**SORTATION FACILITY**  
 99 BILL LEATHAM DRIVE, 2 LEIKIN DRIVE  
 AND 20 LEIKIN DRIVE  
 OTTAWA, ONTARIO

**OVERALL SITE PLAN - SITE A**

REMARKS  
 ISSUE FOR SITE PLAN APPROVAL

DATE: 2021-05-31

PA/PM: A. SANABRIA  
 DRAWN BY: D.V.  
 JOB NO.: TOR21-5008

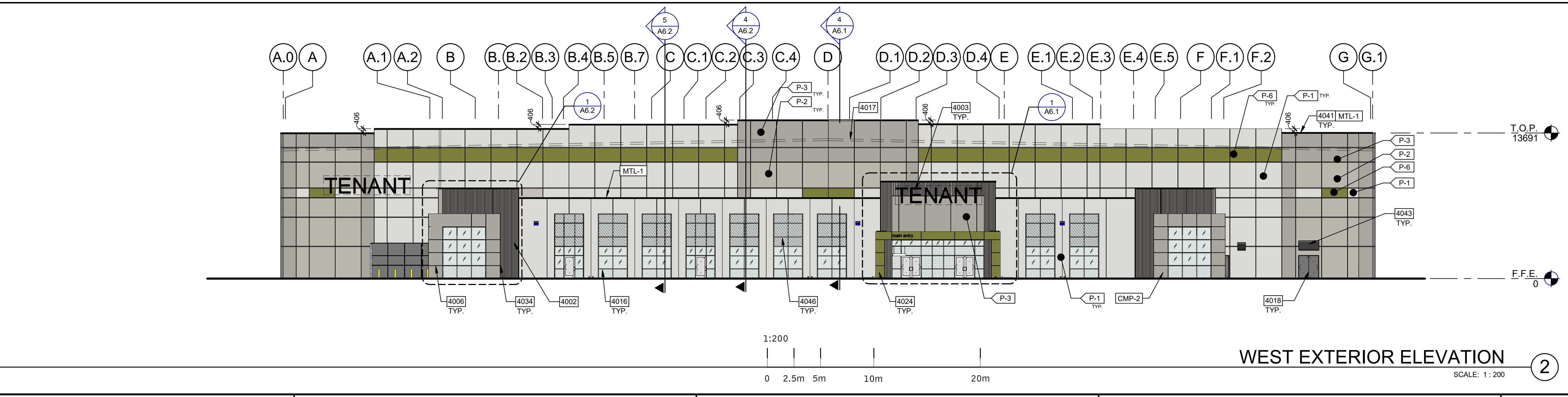
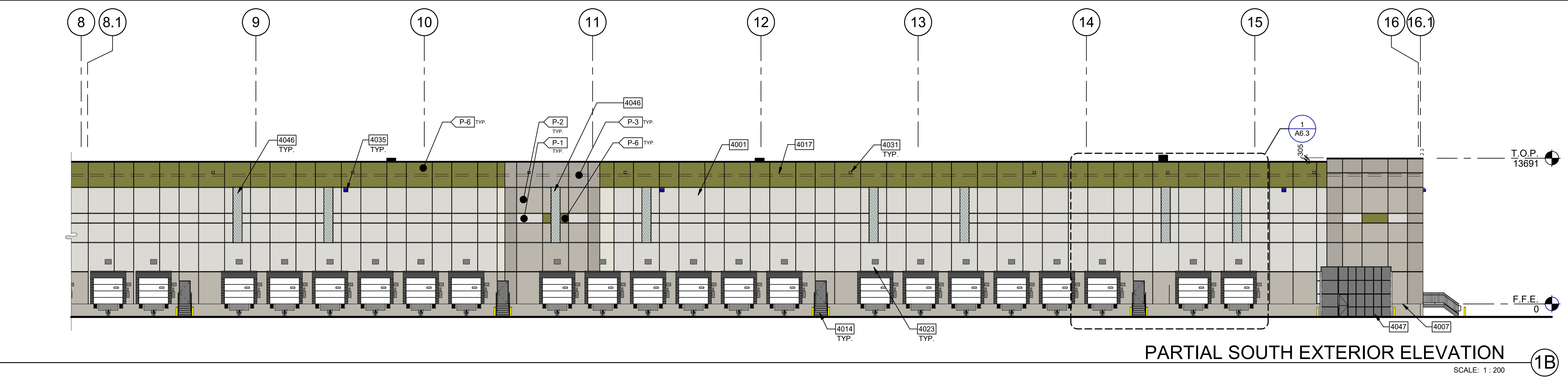
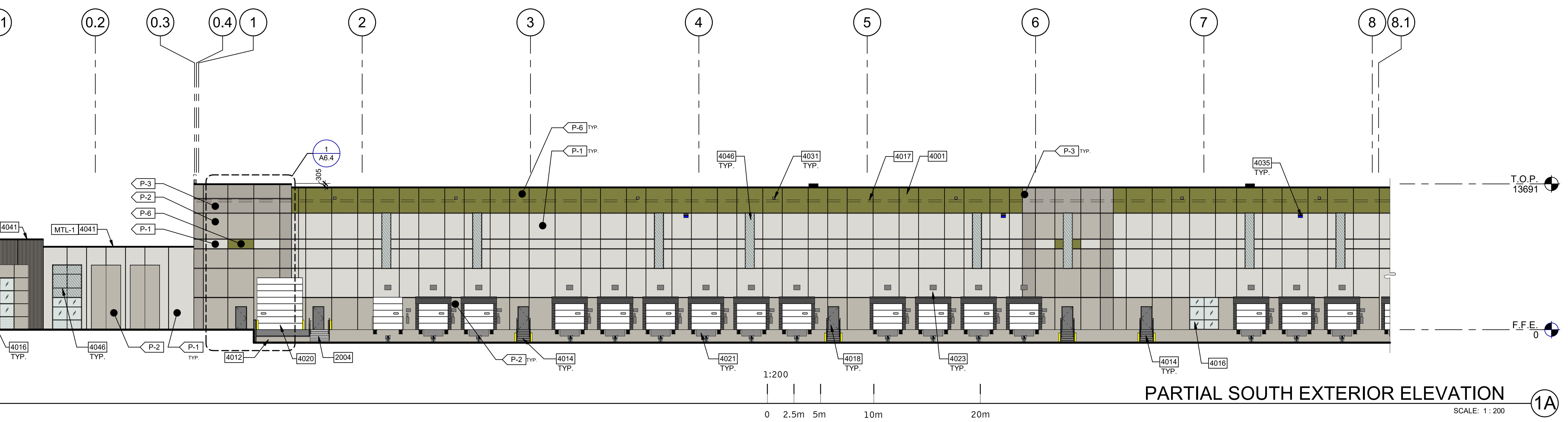
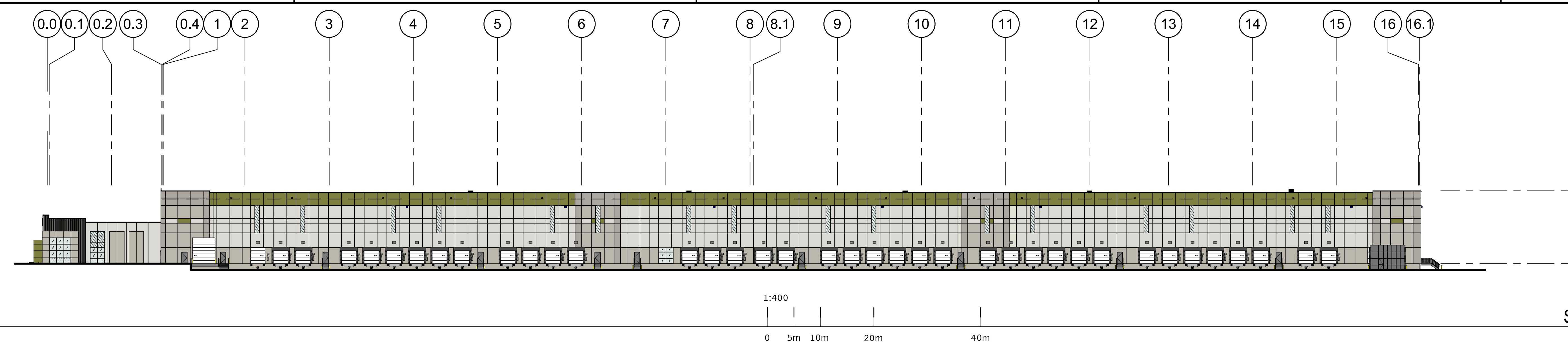
SHEET  
**A1.0a**

2021-05-31\_ISSUE FOR SITE PLAN APPROVAL

**EXTERIOR ELEVATIONS**

DATE	ISSUE FOR SITE PLAN APPROVAL	REMARKS
2021-05-31		

PA/PM:	J OVIEDO
DRAWN BY:	S.Z.
JOB NO.:	TOR21-5008-00



- GENERAL NOTES**  
SEE SHEET A0.2 AND A0.2a FOR GENERAL NOTES
- PROVIDE SECURITY FILM ON ALL EXTERIOR FACILITY AREA WINDOWS 4.572 mm A.F.F. AND LOWER.
  - PAIN EXTERIOR HOLLOW METAL DOORS AND FRAMES SEMI-GLOSS, COLOR TO MATCH P-2.
  - PAIN CONCRETE FILLED STEEL BOLLARDS SEMI-GLOSS P-2 "SAFETY YELLOW".
  - PAIN INTERIOR FACE OF FACILITY AND INTERIOR OF STAIR TOWER CONCRETE WALL PANELS PT-6 "FLAT WHITE". (NOTE: WALLS THAT ARE FULLY COVERED BY INTERIOR APPLIED WALL INSULATION OR METAL FRAMING DOES NOT NEED TO BE PAINTED).
  - EXTERIOR CONCRETE WALL PANEL CONTROL JOINTS TO BE SEALED WITH SONNEBORN "NP-2" OR APPROVED EQUAL.
- SEE SHEET A0.2 FOR GENERAL NOTES

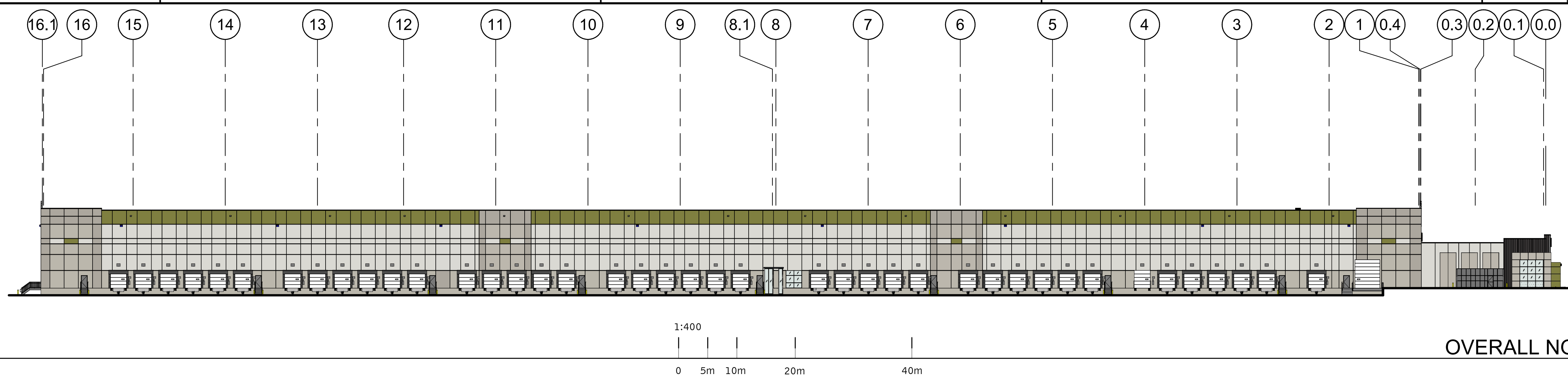
- KEYNOTES**
- 2004 EXTERIOR STAIR WITH 38mm DIA. GUARDRAIL AND 31.75mm DIA. HANDRAIL.
  - 4001 CONCRETE WALL PANELS WITH REVEALS AND TEXTURED PAINT COATING.
  - 4002 INSULATED CONCRETE WALL PANELS WITH 38 mm WIDE PLANK, RANDOM DEPTH PATTERN.
  - 4003 PANEL JOINTS WITH SEALANT, (TYP.)
  - 4005 76 mm WIDE x 13 mm DEEP REVEAL.
  - 4006 25 mm WIDE x 13 mm DEEP REVEAL.
  - 4007 LINE OF CONCRETE FOOTING. (SEE STRUCTURAL SHEETS)
  - 4012 CONCRETE RAMP, RETAINING WALLS, AND STAIRS WITH PAINTED METAL GUARDRAIL AT DRIVE-THRU OVERHEAD DOORS. (SEE STRUCTURAL SHEETS)
  - 4014 EXTERIOR GALVANIZED METAL STAIRS WITH 38 mm DIA. GUARDRAIL AND 32mm DIA. HANDRAIL. PROVIDE (2) 152 mm DIA. BOLLARDS.
  - 4016 PREFINISHED ALUMINUM WINDOW SYSTEM WITH 25 mm INSULATED GLAZING.
  - 4017 LINE OF ROOF BEYOND.
  - 4018 INSULATED HOLLOW METAL SERVICE DOOR AND FRAME. PAINT SEMI-GLOSS. GROUT FRAME SOLID.
  - 4020 INSULATED OVERHEAD SECTIONAL DRIVE-THRU DOOR PROVIDE (4) 152 mm DIA. BOLLARDS (TYP.)
  - 4021 INSULATED OVERHEAD SECTIONAL DOCK DOOR EQUIPMENT.
  - 4023 DOCK SIGNAGE.
  - 4024 STEEL FRAMED CANOPY, TIE DOWNSPOUTS INTO UNDERGROUND STORM SYSTEM. SHEET DRAINING WILL NOT BE ACCEPTED.
  - 4031 OVERFLOW SCUPPER, SIZES VARY. SEE BUILDING ELEVATIONS.
  - 4034 RETURN REVEALS ON ALL EXPOSED SIDES OF PIER.
  - 4035 SURFACE MOUNTED WALL PACK LIGHT FIXTURE, CENTER FIXTURE IN PANEL, MOUNT CENTER OF FIXTURE AT 9245.5mm A.F.F. (SEE ELECTRICAL SHEETS)
  - 4041 METAL CAP.
  - 4043 MOTORIZED WALL LOUVER AT FIRE PUMP ROOM (SEE MECHANICAL & ELECTRICAL SHEETS)
  - 4046 SPANDREL PANEL WITH INSULATED METAL BACKPAN IN CURTAIN WALL SYSTEM.
  - 4047 SECURED SMOKER'S ENCLOSURE WITH WOVEN WIRE MESH SECURITY PANELS.

- LEGEND**
- GLASS:**
- INSULATED GLASS**  
A= 25 INSULATED GLASS (SEE SPECIFICATIONS) PPG SOLARBAN 60, "SOLARGRAY" TINT  
B= 25 INSULATED SPANDREL GLASS (SEE SPECIFICATIONS) PPG SOLARBAN 60, "SOLARGRAY" TINT
  - TEMPERED GLASS**  
AT= 25 INSULATED TEMPERED GLASS (SEE SPECIFICATIONS) PPG SOLARBAN 60, "SOLARGRAY" TINT  
CT= 6.5 CLEAR TEMPERED GLASS  
DT= 13 CLEAR TEMPERED GLASS
  - SPANDREL GLASS**  
C= 6.5 CLEAR GLASS
- COLORS:**
- P-1** TEXTURED ACRYLIC COATING  
MANUFACTURER: SHERWIN WILLIAMS  
COLORNO: MATCH COLOR SW #7648 "FIRST STAR"
  - P-2** BASE COLOR P-2  
MANUFACTURER: SHERWIN WILLIAMS  
COLORNO: MATCH COLOR SW #7016 "MINDFUL GRAY"
  - P-3** BASE COLOR P-3  
MANUFACTURER: SHERWIN WILLIAMS  
COLORNO: MATCH COLOR SW #7017 "DORIAN GRAY"
  - P-4** BASE COLOR P-4  
MANUFACTURER: SHERWIN WILLIAMS  
COLORNO: MATCH COLOR SW #7018 "DOVE TAIL"
  - P-6** BASE COLOR P-6  
MANUFACTURER: SHERWIN WILLIAMS  
COLORNO: T.D.
  - P-8** BASE COLOR P-8  
MANUFACTURER: SHERWIN WILLIAMS  
COLORNO: BLACK
- ITEMS:**
- MTL-1** PREFINISHED METAL  
MANUF.: PAC-CLAD  
COLORNO: GRANITE  
COMMENTS: METAL COPING, SCUPPERS, AND DOWNSPOUTS
  - CMP-1** ITEM: COMPOSITE METAL PANELS (ENTRY CANOPY)  
MANUF.: ALPOLIC  
COLORNO: MATCH P-6  
COMMENTS: PROVIDE DOW CORNING 795 SEALANT AT JOINTS. MATCH P-8
  - CMP-2** ITEM: METAL PANELS (CORNER ACCENTS)  
MANUF.: ALPOLIC  
COLORNO: MATCH P-2  
COMMENTS:
  - GLV-1** ITEM: GALVANIZED METAL  
MANUF.:  
COLORNO:  
COMMENTS:
  - SF-1** ITEM: EXTERIOR METAL RAILINGS, STAIRS AND LANDINGS  
STOREFRONT / WINDOW SYSTEM  
MANUF.: KAWNEER  
COLORNO: DARK BRONZE  
COMMENTS: STOREFRONT / WINDOW SYSTEM (TYP.)
  - LV-1** ITEM: AIR INTAKE LOUVERS  
MANUF.: GREENHECK  
COLORNO: BONE WHITE, GF102  
COMMENTS: BUILDING LOUVERS (TYP.) (L1 AND L3 ONLY)

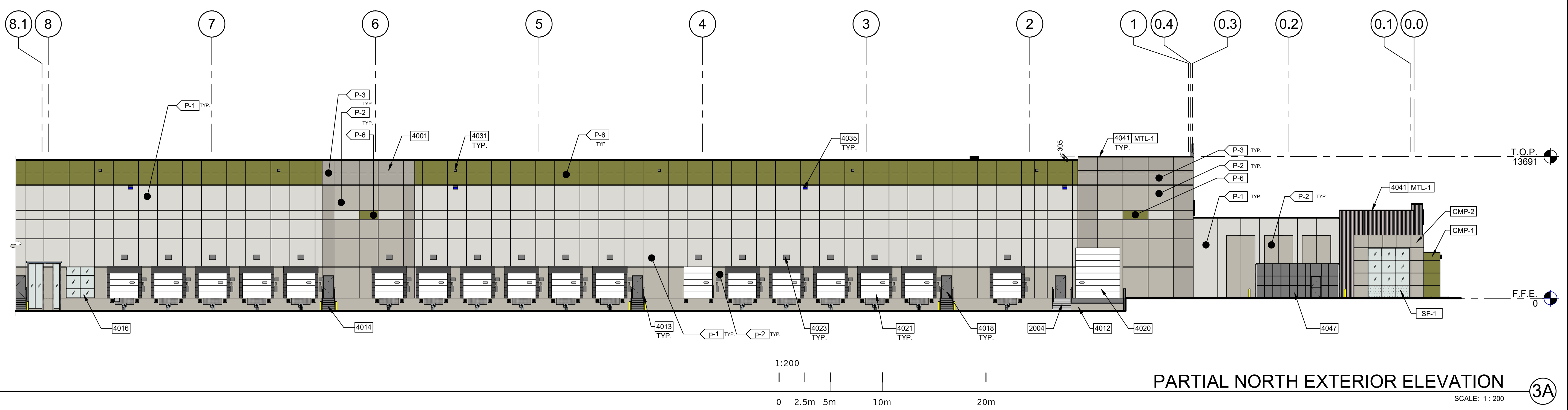
**EXTERIOR ELEVATIONS**

DATE	ISSUE FOR SITE PLAN APPROVAL	REMARKS
2021.05.31		

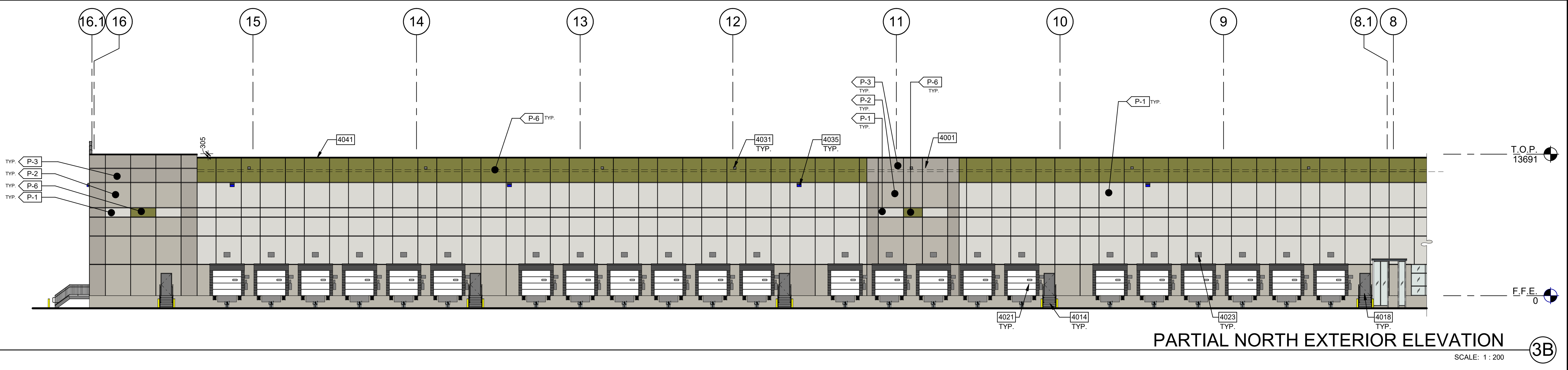
PA/PM:	J OVIEDO
DRAWN BY:	S.Z.
JOB NO.:	TOR21-5008-00



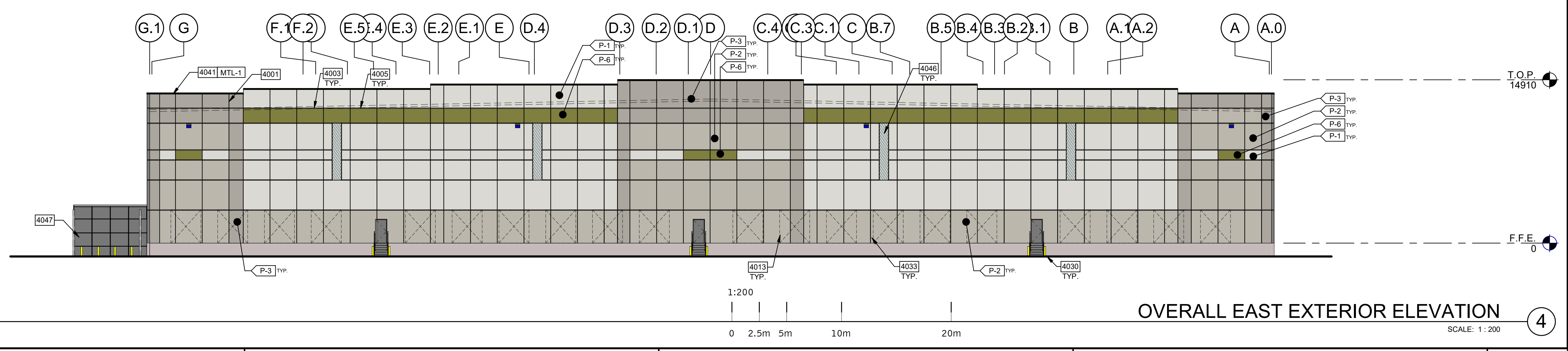
**OVERALL NORTH EXTERIOR ELEVATION** 3  
SCALE: 1:400



**PARTIAL NORTH EXTERIOR ELEVATION** 3A  
SCALE: 1:200



**PARTIAL NORTH EXTERIOR ELEVATION** 3B  
SCALE: 1:200



**OVERALL EAST EXTERIOR ELEVATION** 4  
SCALE: 1:200

**GENERAL NOTES**  
SEE SHEET A0.2 AND A0.2a FOR GENERAL NOTES

- PROVIDE SECURITY FILM ON ALL EXTERIOR FACILITY AREA WINDOWS 4.572 mm A.F.F. AND LOWER.
- PAINT EXTERIOR HOLLOW METAL DOORS AND FRAMES SEMI-GLOSS, COLOR TO MATCH P-2.
- PAINT CONCRETE FILLED STEEL BOLLARDS SEMI-GLOSS P-7 "SAFETY YELLOW".
- PAINT INTERIOR FACE OF FACILITY AND INTERIOR OF STAIR TOWER CONCRETE WALL PANELS PT-6 "FLAT WHITE". (NOTE: WALLS THAT ARE FULLY COVERED BY INTERIOR APPLIED WALL INSULATION OR METAL FRAMING DOES NOT NEED TO BE PAINTED).
- EXTERIOR CONCRETE WALL PANEL CONTROL JOINTS TO BE SEALED WITH SONNEBORN "NP-2" OR APPROVED EQUAL.

**KEYNOTES**  
SEE SHEET A0.2 FOR GENERAL NOTES

- EXTERIOR STAIR WITH 38mm DIA. GUARDRAIL AND 31.75mm DIA. HANDRAIL.
- CONCRETE WALL PANELS WITH REVEALS AND TEXTURED PAINT COATING. PAINT EXPOSED INTERIOR FACE OF CONCRETE WALL PANELS.
- PANEL JOINTS WITH SEALANT. (TYP.)
- 76 mm WIDE x 13 mm DEEP REVEAL.
- CONCRETE RAMPS, RETAINING WALLS, AND STAIRS WITH PAINTED METAL GUARDRAIL AT DRIVE-THRU OVERHEAD DOORS. (SEE STRUCTURAL SHEETS)
- 50 mm DIA. GALVANIZED METAL GUARDRAIL AT 1280.16mm A.F.F. WITH INTERMEDIATE RAIL AT 21" A.F.F. AND POSTS AT 1230 mmO.C. MAX.
- EXTERIOR GALVANIZED METAL STAIRS WITH 38 mm DIA. GUARDRAIL AND 31.75mm DIA. HANDRAIL. PROVIDE (2) 152 mm DIA. BOLLARDS.
- PRE-FINISHED ALUMINUM WINDOW SYSTEM WITH 25 mm INSULATED GLAZING.
- INSULATED HOLLOW METAL SERVICE DOOR AND FRAME. PAINT SEMI-GLOSS. GROUT FRAME SOLID.
- INSULATED OVERHEAD SECTIONAL DRIVE-THRU DOOR PROVIDE (4) 152 mm DIA. BOLLARDS (TYP.)
- INSULATED OVERHEAD SECTIONAL DOCK DOOR EQUIPMENT.
- DOCK SIGNAGE.
- STAINLESS STEEL OVERFLOW NOZZLE W/ HINGED PERFORATED COVER. SEE PLUMBING SHEETS FOR SIZE. MOUNT AT 610 mm ABOVE FINISHED ADJACENT SURFACE.
- OVERFLOW SCUPPER. SIZES VARY. SEE BUILDING ELEVATIONS.
- AREA OF FUTURE TENANT SIGNAGE.
- SURFACE MOUNTED WALL PACK LIGHT FIXTURE. CENTER FIXTURE IN PANEL. MOUNT CENTER OF FIXTURE AT 9245.5mm A.F.F. (SEE ELECTRICAL SHEETS)
- METAL CAP.
- SPANDREL PANEL WITH INSULATED METAL BACKPAN IN CURTAIN WALL SYSTEM.
- SECURED SMOKER'S ENCLOSURE WITH WOVEN WIRE MESH SECURITY PANELS.

**LEGEND**

- GLASS:**
- INSULATED GLASS**  
A= 25 INSULATED GLASS (SEE SPECIFICATIONS) PPG SOLARBAN 60, "SOLARGRAY" TINT  
B= 25 INSULATED SPANDREL GLASS (SEE SPECIFICATIONS) PPG SOLARBAN 60, "SOLARGRAY" TINT
  - TEMPERED GLASS**  
AT= 25 INSULATED TEMPERED GLASS (SEE SPECIFICATIONS) PPG SOLARBAN 60, "SOLARGRAY" TINT  
CT= 6.5 CLEAR TEMPERED GLASS  
DT= 13 CLEAR TEMPERED GLASS
  - SPANDREL GLASS**  
C= 6.5 CLEAR GLASS
- COLORS:**
- P-1 TEXTURED ACRYLIC COATING MANUFACTURER: SHERWIN WILLIAMS COLORNO: MATCH COLOR SW #7646 "FIRST STAR"
  - P-2 BASE COLOR P-2 MANUFACTURER: SHERWIN WILLIAMS COLORNO: MATCH COLOR SW #7016 "MINDFUL GRAY"
  - P-3 BASE COLOR P-3 MANUFACTURER: SHERWIN WILLIAMS COLORNO: MATCH COLOR SW #7017 "DORIAN GRAY"
  - P-4 BASE COLOR P-4 MANUFACTURER: SHERWIN WILLIAMS COLORNO: MATCH COLOR SW #7018 "DOVE TAIL"
  - P-6 BASE COLOR P-6 MANUFACTURER: SHERWIN WILLIAMS COLORNO: TBD
  - P-8 BASE COLOR P-8 MANUFACTURER: SHERWIN WILLIAMS COLORNO: BLACK

- ITEM:** PREFINISHED METAL  
**MANUF:** PAC-CLAD  
**COLORNO:** GRANITE  
**COMMENTS:** METAL COPING, SCUPPERS, AND DOWNSPOUTS
- ITEM:** COMPOSITE METAL PANELS (ENTRY CANOPY)  
**MANUF:** ALPOLIC  
**COLORNO:** MATCH P-6  
**COMMENTS:** PROVIDE DOW CORNING 795 SEALANT AT JOINTS. MATCH P-6
- ITEM:** METAL PANELS (CORNER ACCENTS)  
**MANUF:** ALPOLIC  
**COLORNO:** MATCH P-2  
**COMMENTS:**
- ITEM:** GALVANIZED METAL  
**MANUF:** GLV-1  
**COLORNO:** EXTERIOR METAL RAILINGS, STAIRS AND LANDINGS  
**COMMENTS:** STOREFRONT / WINDOW SYSTEM
- ITEM:** STOREFRONT / WINDOW SYSTEM  
**MANUF:** KAWNEER  
**COLORNO:** DARK BRONZE  
**COMMENTS:** STOREFRONT / WINDOW SYSTEM (TYP.)
- ITEM:** AIR INTAKE LOUVERS  
**MANUF:** GREENHECK  
**COLORNO:** BONE WHITE, GF102  
**COMMENTS:** BUILDING LOUVERS (TYP.) (L1 AND L3 ONLY)