

- LEGEND**
- AREA 1 815-813
 - MANHOLE TO MANHOLE
 - POPULATION EQUIVALENT
 - AREA IN HECTARES
 - SANITARY DRAINAGE AREA BOUNDARY
 - PROPOSED SANITARY SEWER AND MANHOLE WITH DIRECTION OF FLOW
 - EXISTING SANITARY SEWER AND MANHOLE
 - EXISTING SANITARY SEWER WITH DIRECTION OF FLOW

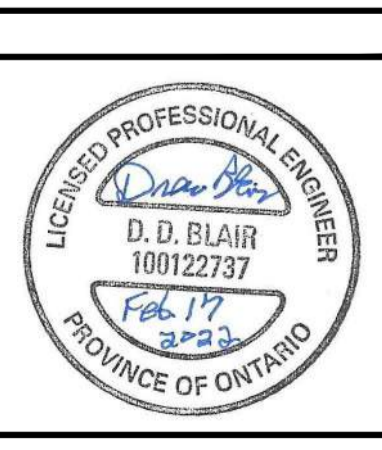
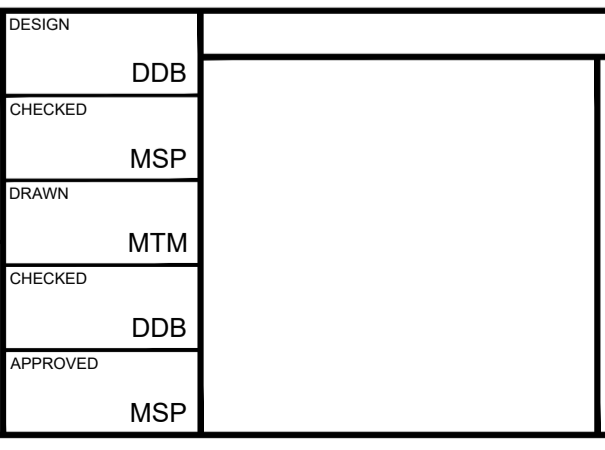
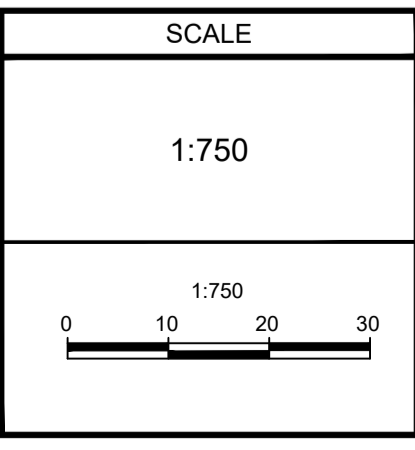
APPROVED
By Allison Hamlin at 12:47 pm, Jun 02, 2022

Allison Hamlin
ALLISON HAMLIN
MANAGER (A), DEVELOPMENT REVIEW WEST
PLANNING, REAL ESTATE & ECONOMIC DEVELOPMENT
DEPARTMENT, CITY OF OTTAWA

NOTE:
THE POSITION OF ALL POLE LINES, CONDUITS, WATERMANS, SEWERS AND OTHER UNDERGROUND AND OVERGROUND UTILITIES AND STRUCTURES IS NOT NECESSARILY SHOWN ON THE CONTRACT DRAWINGS, AND WHERE SHOWN, THE ACCURACY OF THE POSITION OF SUCH UTILITIES AND STRUCTURES IS NOT GUARANTEED. BEFORE STARTING WORK, DETERMINE THE EXACT LOCATION OF ALL SUCH UTILITIES AND STRUCTURES AND ASSUME ALL LIABILITY FOR DAMAGE TO THEM.

No.	REVISION	DATE	BY
3.	REVISED PER CITY COMMENTS	FEB 17/22	DDB
2.	REVISED PER CITY COMMENTS	NOV 5/21	DDB
1.	ISSUED FOR CITY OF OTTAWA REVIEW	JUN 2/21	DDB

DESIGN	CHECKED	DRAWN	APPROVED
DDB	MSP	MTM	DDB
			MSP



CITY OF OTTAWA
5331 FERNBANK ROAD
FERNBANK ZENS

DRAWING NAME		PROJECT No.
SANITARY DRAINAGE AREA PLAN		121011-00
		REV # 3
		DRAWING No.
		121011-SAN
		#18539

M:\2021\121011\121011-SAN.dwg, SAN, Feb 10, 2022, 2:22pm, greg@ov

D07-12-21-0080