

- LEGEND**
- SITE BOUNDARY
 - 97.32 PROPOSED ELEVATION
 - 96.85 EXISTING ELEVATION
 - 97.80T/W PROPOSED TOP OF WALL ELEVATION
 - 96.40B/W PROPOSED BOTTOM OF WALL ELEVATION
 - 98.20TC PROPOSED TOP OF CURB ELEVATION
 - 96.85(S) PROPOSED SWALE ELEVATION
 - 96.80TG PROPOSED TOP OF GRATE ELEVATION
 - 97.20CLD PROPOSED CENTERLINE OF DITCH ELEVATION
 - PROPOSED RETAINING WALL
 - FF= FINISHED FLOOR ELEVATION
 - T/F= TOP OF FOUNDATION ELEVATION
 - USF= UNDERSIDE OF FOOTING ELEVATION
 - MUSF= MINIMUM UNDERSIDE OF FOOTING ELEVATION
 - 97.70 PROPOSED TERRACE ELEVATION
 - MAXIMUM 3:1 SIDESLOPE
 - 2.0% PROPOSED GRADE AND DIRECTION
 - MAJOR OVERLAND FLOW ROUTE
 - HYD PROPOSED HYDRANT LOCATION
 - T/F=127.55 PROPOSED TOP OF BOTTOM FLANGE
 - VVB PROPOSED VALVE & VALVE BOX
 - CS PROPOSED CURB STOP LOCATION
 - DMA PROPOSED WATER CHAMBER (AS PER CITY OF OTTAWA DETAIL W3)
 - VVC PROPOSED VALVE & VALVE CHAMBER (AS PER CITY OF OTTAWA DETAIL W3)
 - 100 PROPOSED SANITARY MANHOLE
 - 1000 PROPOSED STORM MANHOLE
 - CB1 PROPOSED ROAD CATCHBASIN
 - CBMH1 PROPOSED CATCHBASIN MANHOLE
 - RYE1 PROPOSED REAR YARD ELBOW
 - RYT1 PROPOSED REAR YARD TEE
 - W PROPOSED WATER METER LOCATION
 - R PROPOSED REMOTE WATER METER LOCATION
 - PROPOSED TWSI AS PER CITY OF OTTAWA DETAIL 7.2
 - 97.55 PROPOSED STATIC PONDING LIMITS AND ELEVATION
 - 98.00 EXISTING CONTOUR LINE AND ELEVATION
 - 97.50 EXISTING CONTOUR LINE AND ELEVATION
 - 97.00 EXISTING CONTOUR LINE AND ELEVATION
 - EX HYD EXISTING FIRE HYDRANT
 - EX SANMH EXISTING SANITARY MANHOLE
 - EX STMMH EXISTING STORM MANHOLE
 - VVB EXISTING VALVE & VALVE BOX
 - HP EXISTING HYDRO POLE
 - EX CB EXISTING CATCH BASIN

- PAVEMENT STRUCTURE DETAILS**
- *REFER TO GEOTECHNICAL REPORT FOR SUBSURFACE CONDITIONS AND CONSTRUCTION RECOMMENDATIONS.
- ACCESS LANES AND HEAVY DUTY TRUCK PARKING**
- 40mm SUPERPAVE 12.5
 - 50mm SUPERPAVE 19.0
 - 150mm GRANULAR 'A'
 - 400mm GRANULAR 'B' TYPE II
 - SUBGRADE TO BE FILL, IN SITU SOIL, OR O.P.S.S. GRANULAR 'B' TYPE 1 OR 2 MATERIAL PLACED OVER IN SITU SOIL OR FILL
- LIGHT DUTY PARKING**
- 50mm HL3 OR SUPERPAVE 12.5
 - 150mm GRANULAR 'A'
 - 300mm GRANULAR 'B' TYPE II
 - SUBGRADE TO BE FILL, IN SITU SOIL, OR O.P.S.S. GRANULAR 'B' TYPE 1 OR 2 MATERIAL PLACED OVER IN SITU SOIL OR FILL

APPROVED
By Allison Hamlin at 12:52 pm, Jun 02, 2022

Allison Hamlin
ALLISON HAMLIN
MANAGER (A), DEVELOPMENT REVIEW WEST
PLANNING, REAL ESTATE & ECONOMIC DEVELOPMENT
DEPARTMENT, CITY OF OTTAWA

NOTE:
THE POSITION OF ALL POLE LINES, CONDUITS, WATERMANS, SEWERS AND OTHER UNDERGROUND AND OVERGROUND UTILITIES AND STRUCTURES IS NOT NECESSARILY SHOWN ON THE CONTRACT DRAWINGS, AND WHERE SHOWN, THE ACCURACY OF THE POSITION OF SUCH UTILITIES AND STRUCTURES IS NOT GUARANTEED. BEFORE STARTING WORK, DETERMINE THE EXACT LOCATION OF ALL SUCH UTILITIES AND STRUCTURES AND ASSUME ALL LIABILITY FOR DAMAGE TO THEM.

No.	REVISION	DATE	BY
3.	REVISED PER CITY COMMENTS	FEB 17/22	DDB
2.	REVISED PER CITY COMMENTS	NOV 5/21	DDB
1.	ISSUED FOR CITY OF OTTAWA REVIEW	JUN 2/21	DDB

SCALE	DESIGN
1:400	DDB
	CHECKED MSP
	DRAWN ATE
	CHECKED DDB
	APPROVED MSP

SCALE: 1:400

PROFESSIONAL ENGINEER
D. D. BLAIR
100122737
Feb 19 2022
PROVINCE OF ONTARIO

NOVATECH
Engineers, Planners & Landscape Architects
Suite 200, 240 Michael Cowpland Drive
Ottawa, Ontario, Canada K2M 1P6
Telephone: (613) 254-9643
Facsimile: (613) 254-5867
Website: www.novatech-eng.com

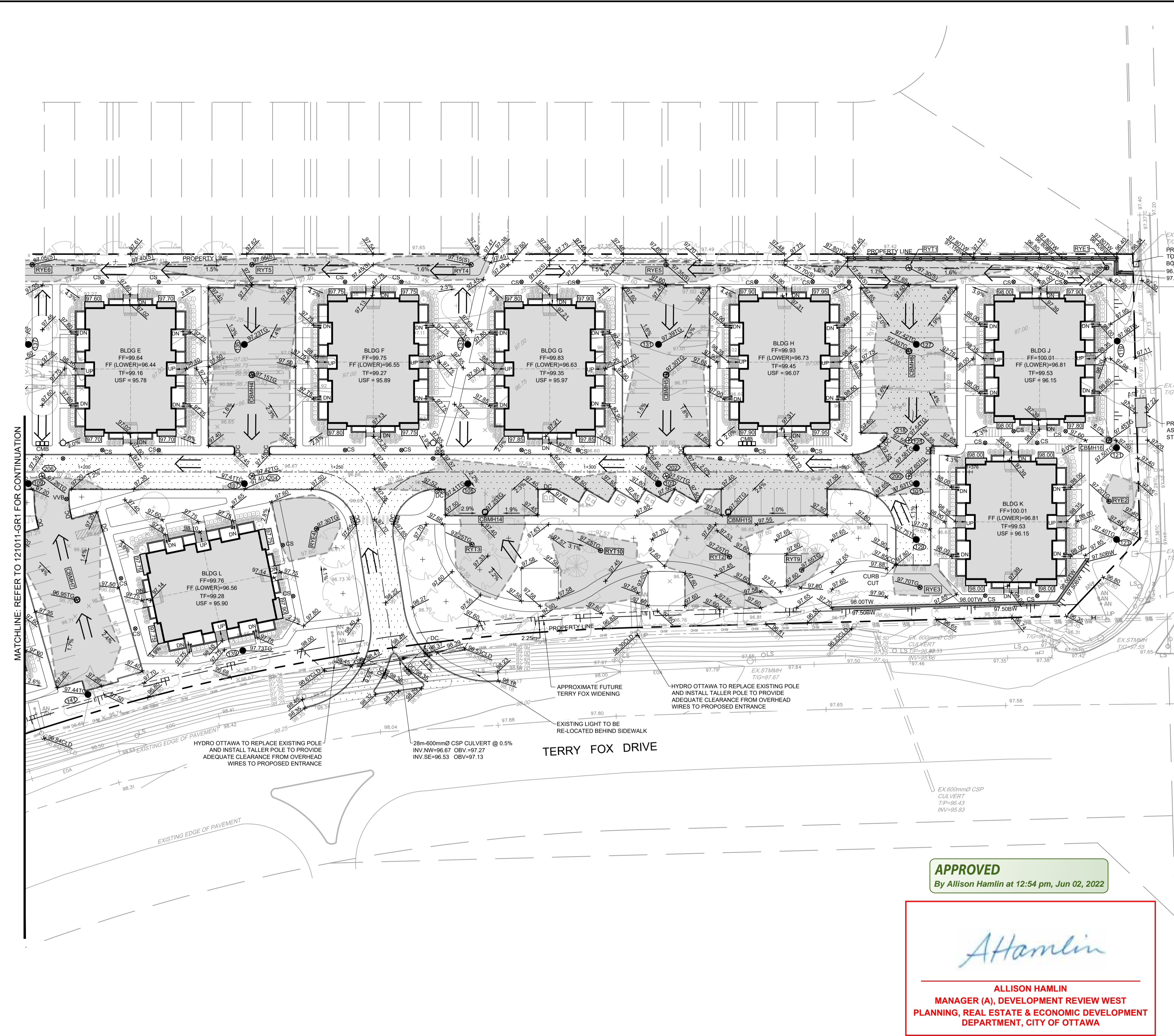
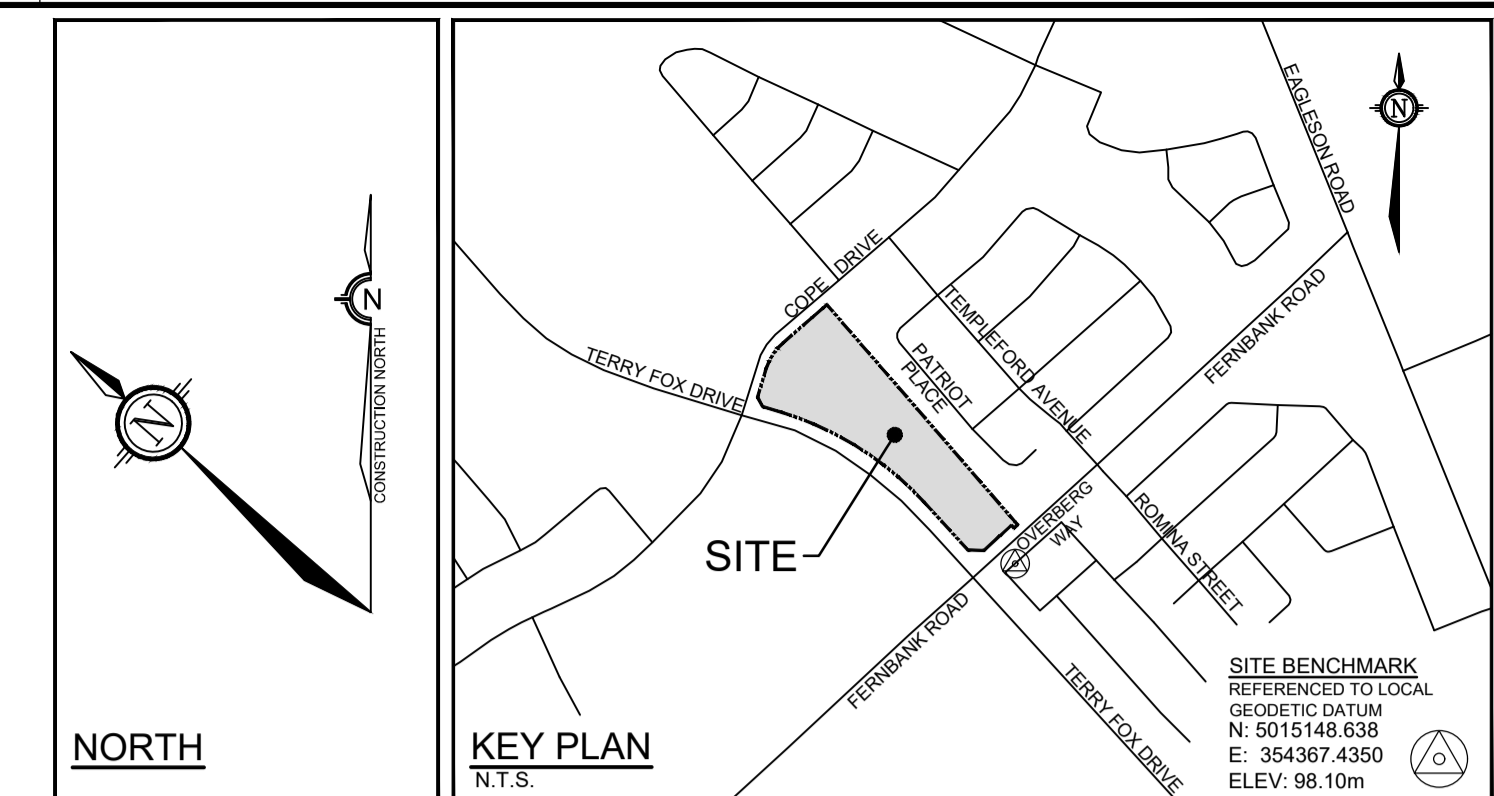
CITY OF OTTAWA
5331 FERNBANK ROAD
FERNBANK ZENS

DRAWING NAME: GRADING PLAN

PROJECT No: 121011-00
REV: REV # 3
DRAWING No: 121011-GR1
#18539

M:\2021\121011\121011-GR.dwg, GR1, Feb 17, 2022 - 4:47pm, jbragdon

D07-12-21-0080



- LEGEND**
- SITE BOUNDARY
 - PROPOSED ELEVATION
 - EXISTING ELEVATION
 - PROPOSED TOP OF WALL ELEVATION
 - PROPOSED BOTTOM OF WALL ELEVATION
 - PROPOSED TOP OF CURB ELEVATION
 - PROPOSED SWALE ELEVATION
 - PROPOSED TOP OF GRATE ELEVATION
 - PROPOSED CENTERLINE OF DITCH ELEVATION
 - PROPOSED RETAINING WALL
 - FF=
 - T/F=
 - USF=
 - MUSF=
 - 97.70
 - MAXIMUM 3:1 SLOPE
 - PROPOSED CENTERLINE SWALE
 - PROPOSED GRADE AND DIRECTION
 - MAJOR OVERLAND FLOW ROUTE
 - HYD
 - T/F=127.55
 - VVB
 - CS
 - DMA
 - VVC
 - 100
 - 150
 - CB 1
 - CBMH 1
 - RYE 1
 - RYT 1
 - W
 - R
 - TWSI
 - 97.55
 - 98.00, 97.50, 97.00
 - EX.HYD
 - EX.SANMH
 - EX.STMMH
 - VVB
 - HP
 - EX.CB

- PAVEMENT STRUCTURE DETAILS**
*REFER TO GEOTECHNICAL REPORT FOR SUBSURFACE CONDITIONS AND CONSTRUCTION RECOMMENDATIONS.
- ACCESS LANES AND HEAVY DUTY TRUCK PARKING**
- 40mm SUPERPAVE 12.5
 - 50mm SUPERPAVE 19.0
 - 150mm GRANULAR 'A'
 - 400mm GRANULAR 'B' TYPE II
 - SUBGRADE TO BE FILL, IN SITU SOIL, OR O.P.S.S. GRANULAR 'B' TYPE 1 OR 2 MATERIAL PLACED OVER IN SITU SOIL OR FILL
- LIGHT DUTY PARKING**
- 50mm HL3 OR SUPERPAVE 12.5
 - 150mm GRANULAR 'A'
 - 300mm GRANULAR 'B' TYPE II
 - SUBGRADE TO BE FILL, IN SITU SOIL, OR O.P.S.S. GRANULAR 'B' TYPE 1 OR 2 MATERIAL PLACED OVER IN SITU SOIL OR FILL

APPROVED
By Allison Hamlin at 12:54 pm, Jun 02, 2022

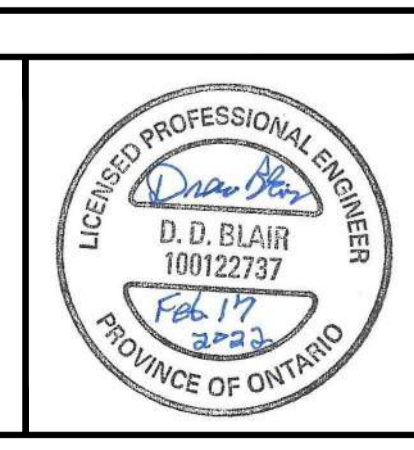
Allison Hamlin
ALLISON HAMLIN
MANAGER (A), DEVELOPMENT REVIEW WEST
PLANNING, REAL ESTATE & ECONOMIC DEVELOPMENT
DEPARTMENT, CITY OF OTTAWA

NOTE:
THE POSITION OF ALL POLE LINES, CONDUITS, WATERMANS, SEWERS AND OTHER UNDERGROUND AND OVERGROUND UTILITIES AND STRUCTURES IS NOT NECESSARILY SHOWN ON THE CONTRACT DRAWINGS, AND WHERE SHOWN, THE ACCURACY OF THE POSITION OF SUCH UTILITIES AND STRUCTURES IS NOT GUARANTEED. BEFORE STARTING WORK, DETERMINE THE EXACT LOCATION OF ALL SUCH UTILITIES AND STRUCTURES AND ASSUME ALL LIABILITY FOR DAMAGE TO THEM.

No.	REVISION	DATE	BY
3.	REVISED PER CITY COMMENTS	FEB 17/22	DDB
2.	REVISED PER CITY COMMENTS	NOV 5/21	DDB
1.	ISSUED FOR CITY OF OTTAWA REVIEW	JUN 2/21	DDB

DESIGN	SCALE
DDB	1:400
MSP	1:400
ATE	1:400
DDB	1:400
MSP	1:400

DESIGN	CHECKED	DRAWN	APPROVED
DDB	MSP	ATE	DDB
MSP			



NOVATECH
Engineers, Planners & Landscape Architects
Suite 200, 240 Michael Cowpland Drive
Ottawa, Ontario, Canada K2M 1P6
Telephone: (613) 254-9643
Facsimile: (613) 254-5867
Website: www.novatech-eng.com

CITY OF OTTAWA 5331 FERNBANK ROAD FERNBANK ZENS		PROJECT No. 121011-00
DRAWING NAME GRADING PLAN		REV # 3
DRAWING No. 121011-GR2		#18539

M:\2021\121011\121011-GR2.dwg, GR2, Feb 17, 2022, 4:47pm, jgraham