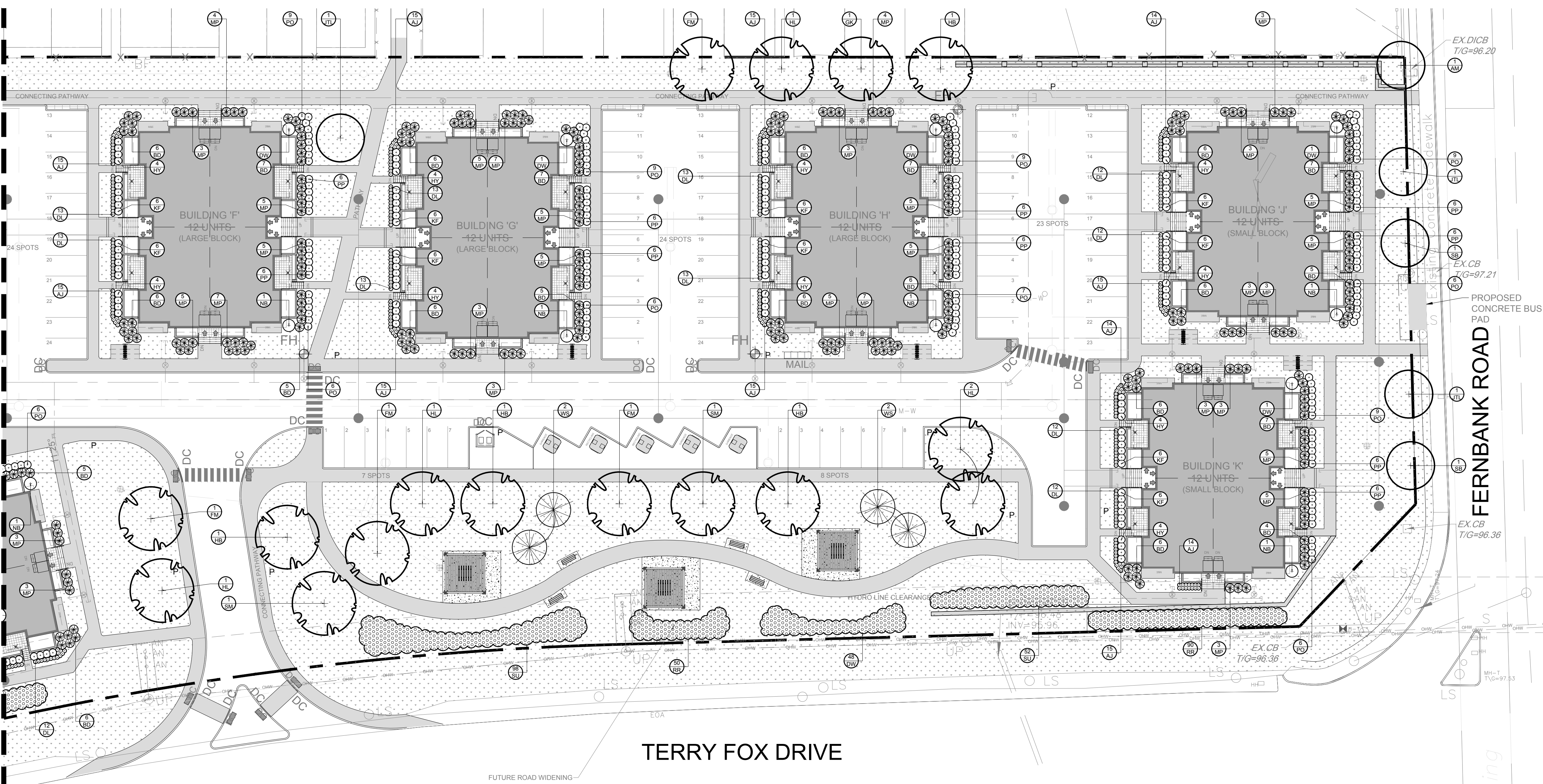


CONTINUED ON DRAWING L.1



1 LANDSCAPE PLAN
SCALE 1:300

- GENERAL NOTES:**
- It is the responsibility of the appropriate contractor or official to report any errors, omissions or discrepancies on this plan with actual site conditions to the Landscape Architect before proceeding with construction.
 - The contractor is to notify all utility companies and authorities prior to any excavation and ascertain locations of underground services.
 - The contractor is to reinstate all areas and items damaged as a result of construction activity.
 - The contractor is to comply with all pertinent codes and by-laws.
 - The contractor is to maintain a positive surface run-off throughout the entire construction period.
 - The Landscape Architect is not responsible for subsurface conditions.
 - The contractor is to identify all existing trees to remain on site with the Landscape Architect prior to construction.
 - The contractor is to stake the proposed location of all plant material in conjunction with the Landscape Architect prior to excavation.
 - Minimum distances for selected deciduous trees are as follows:
 - Building Foundations 7.5m
 - Sidewalks 1.5m
 - Public Streets 2.5m
 - Underground Infrastructure 2.0m
 - All trees within 1m of underground utility trenches are to be excavated by hand.
 - Remove all protective wrapping from tree trunks after installation.
 - Staking of trees shall only be performed if necessary.
 - Ensure that mulch is pulled back a min. distance of 75mm from base of tree trunk.

CLIENT

CLARIDGE HOMES

CONSULTANTS

ARCHITECTS:
RLA ARCHITECTURE
RODERICK LAHEY ARCHITECT INC.
95 BEICH STREET OTTAWA, ONTARIO K1S 3A5
TEL: (613) 724-9622

CIVIL ENGINEERS:
NOVATECH
ENGINEERS, PLANNERS & LANDSCAPE ARCHITECTS
1000 WILSON AVENUE, SUITE 200
OTTAWA, ONTARIO K2M 1P6
TEL: (613) 254-9843

LEGEND

- PROPOSED LARGE DECIDUOUS TREE
- PROPOSED SMALL DECIDUOUS TREE
- PROPOSED CONIFEROUS TREE
- PROPOSED SHRUBS / PERENNIALS
- PROPOSED SHRUBS
- PROPOSED SOD
- PROPOSED BENCH
- PROPOSED RETAINING WALL REFER TO GRADING PLAN
- PROPOSED SHADE STRUCTURE WITH TABLE AND BENCHES UNDERNEATH

5	REVISED AS PER CITY COMMENTS	04/08/2022	LC	JL
4	REVISED AS PER CITY COMMENTS	02/16/2022	LC	JL
3	REVISED AS PER CIVIL/SITE PLAN CHANGES	11/04/2021	LC	JL
2	REVISED AS PER CITY COMMENTS	10/07/2021	LC	JL
1	ISSUED FOR COMMENTS AND REVIEW	06/18/2021	LC	JL
No.	Issue	Date	DR	CK

JAMES B. LENNOX & ASSOCIATES INC.
LANDSCAPE ARCHITECTS
3332 CARLING AVE. OTTAWA, ONTARIO K2H 5A5
Tel. (613) 722-5168 Fax. (613) 343-3942

PROJECT
TERRY FOX ZENS
OTTAWA, ONTARIO

DRAWING
LANDSCAPE PLAN
(SOUTH-EAST)

STAMP

ASSOCIATION OF LANDSCAPE ARCHITECTS
MEMBER

SCALE
AS SHOWN

START DATE
JUNE, 2021

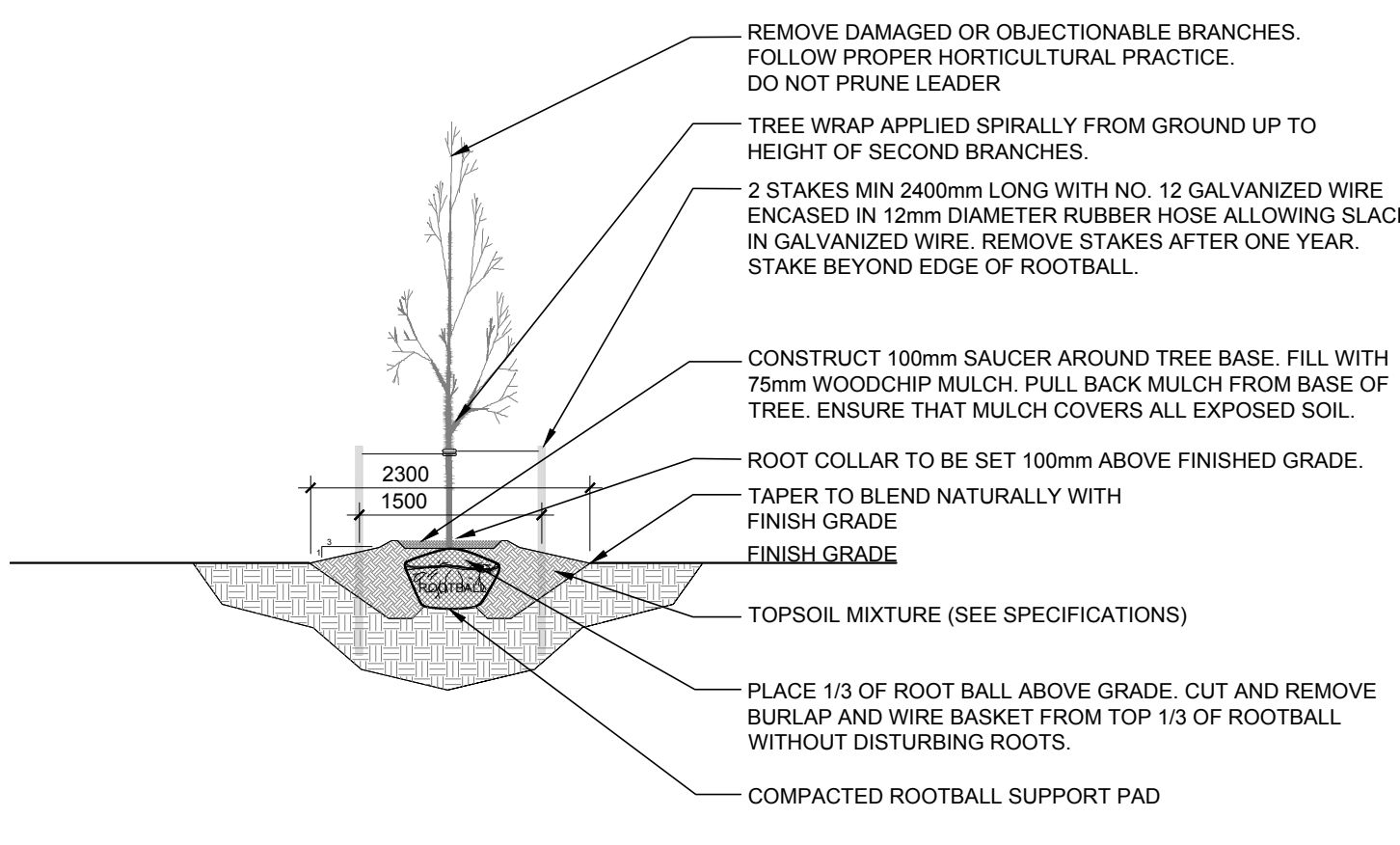
PROJECT NO.
21-CLG-2163

PROJECT NORTH

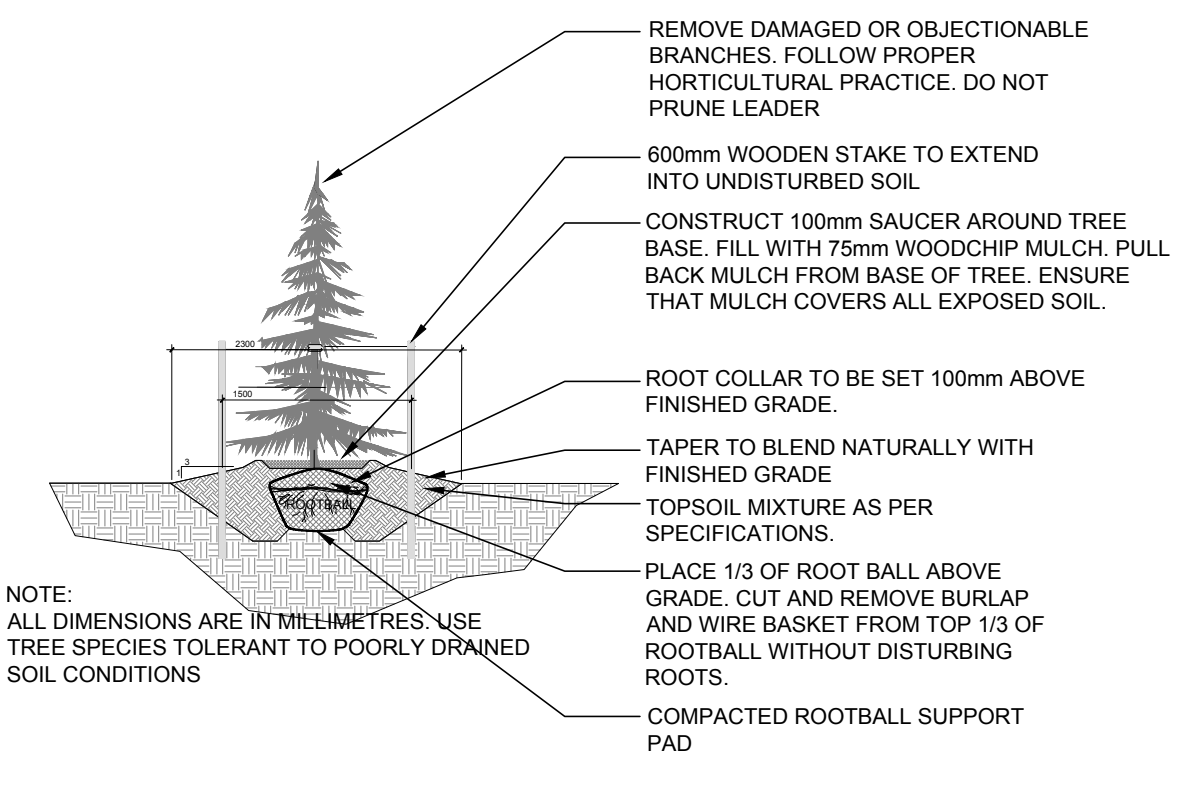
DRAWING NO.
L.2

PLOT SIZE ARCH-D

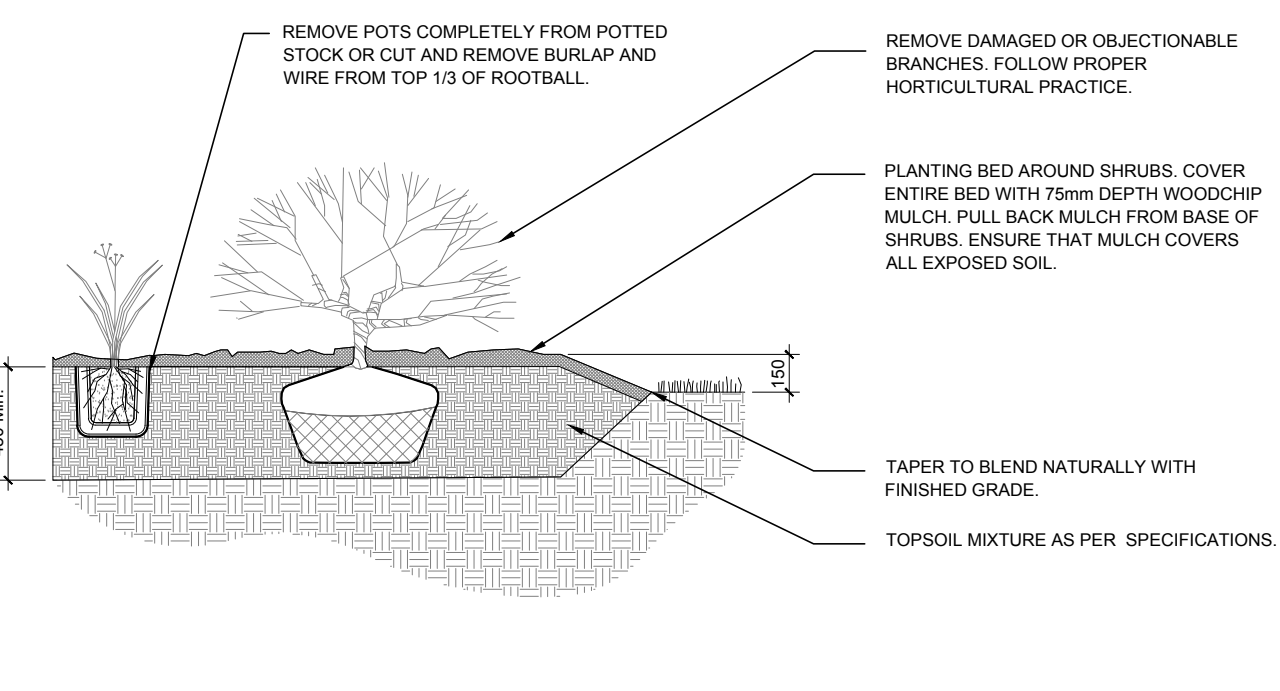
- NOTES:**
- ALL DIMENSIONS ARE IN MILLIMETRES.
 - USE TREE SPECIES TOLERANT TO POORLY DRAINED SOIL CONDITIONS.



2 DECIDUOUS TREE PLANTING
L.2 N.T.S.



3 CONIFEROUS TREE PLANTING
L.2 N.T.S.



4 SHRUB AND PERENNIAL PLANTING
L.2 N.T.S.

PROPOSED PLANT LIST

KEY	qty.	BOTANICAL NAME	COMMON NAME	SIZE	CONDITION	REMARKS
TREES						
AM	8	<i>Acer ginnala</i>	Amur Maple	60mm ø	B&B	
FM	7	<i>Acer x freemanii</i>	Friesman's Maple	60mm ø	B&B	
GK	5	<i>Ginkgo biloba</i>	Maidenhair Tree	60mm ø	B&B	
HB	9	<i>Celtis occidentalis</i>	Hackberry	60mm ø	B&B	
HL	9	<i>Gleditsia triacanthos</i> var. <i>inermis</i> 'Shademaster'	Shademaster Honeylocust	60mm ø	B&B	
JTL	12	<i>Syringa reticulata</i>	Japanese Tree Lilac	60mm ø	B&B	
MC	5	<i>Malus 'Makamik'</i>	Makamik Crabapple	60mm ø	B&B	
SB	6	<i>Amelanchier canadensis</i>	Shadblow Serviceberry	60mm ø	B&B	
SM	4	<i>Acer saccharum</i>	Sugar Maple	60mm ø	B&B	
WS	17	<i>Picea glauca</i>	White Spruce	1800 mm ht.	B&B	
SHRUBS						
BD	373	<i>Juniperus sabin</i> 'Blue Danube'	Blue Danube Juniper	600mm spr.	Potted	1000mm o.c.
DW	236	<i>Cornus sericea</i>	Red Osier Dogwood	800mm ht.	Potted	1200mm o.c.
HY	120	<i>Hydrangea arborescens</i> 'Annabelle'	Annabelle Hydrangea	3 gal. pot	Potted	800 mm o.c.
MP	401	<i>Pinus mugo</i> 'Pumilio'	Dwarf Mugo Pine	600mm spr.	Potted	1000mm o.c.
NB	16	<i>Physocarpus opulifolius</i>	Common Ninebark	600mm ht.	Potted	
PD	225	<i>Potentilla fruticosa</i> 'Goldfinger'	Goldfinger Potentilla	600mm ht.	Potted	800mm o.c.
PP	192	<i>Spiraea japonica</i> 'Little Princess'	Little Princess Spirea	600mm pot	Potted	800 mm o.c.
RR	311	<i>Rosa rugosa</i>	Rugosa Rose	800mm ht.	Potted	800mm o.c.
SU	330	<i>Rhus typhina</i> 'Laciniata'	Cuteleaf Staghorn Sumac	800 mm ht.	Potted	1200 mm o.c.
ORNAMENTAL GRASS AND PERENNIALS						
AJ	522	<i>Sedum telephium</i> 'Autumn Joy'	Autumn Joy Sedum	150mm pot	Potted	400 mm o.c.
DL	412	<i>Hemerocallis</i> 'Stella D'Oro'	Stella D'Oro Day Lily	150mm pot	Potted	400 mm o.c.
KF	192	<i>Calamagrostis</i> 'Karl Foerster'	Karl Foerster Grass	250mm pot	Potted	800 mm o.c.

D07-12-21-0080