

PLAN 4R-20112
 RECEIVED AND DEPOSITED
 DATE Feb 11, 2005
 R. TISHART
 OTTAWA-CARLETON No. 4

REQUIRE THIS PLAN TO BE BY THE ACT AND THE LAND TILES ACT.
 DATE Feb 11, 2005
 R. TISHART
 OTTAWA-CARLETON No. 4

PLAN OF SURVEY OF
 PART OF LOTS 30 AND 31
 CONCESSION 10 AND
 PART OF THE ROAD ALLOWANCE
 BETWEEN LOTS 30 AND 31
 CONCESSION 10
 GEOGRAPHIC TOWNSHIP OF GOULBOURN
 CITY OF OTTAWA

STEPHEN A. TISHART, O.L.S.

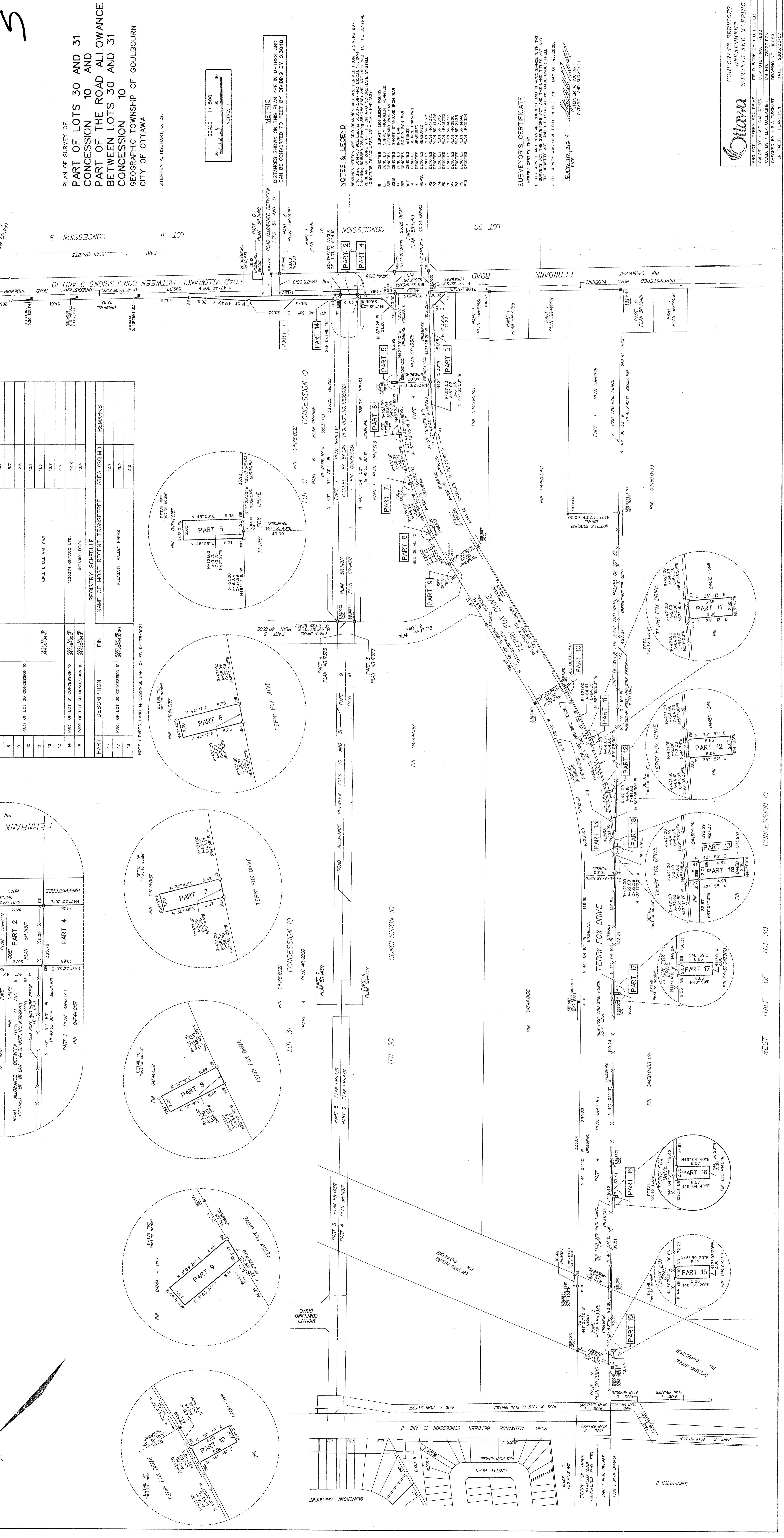
SCALE - 1:1500
 METRES

METRIC
 DISTANCES SHOWN ON THIS PLAN ARE IN METRES AND
 CAN BE CONVERTED TO FEET BY DIVIDING BY 0.3048

NOTES & LEGEND
 BEARINGS HEREON ARE GRID BEARINGS AND ARE DERIVED FROM I.S.C.M. No. 8872 (1994) (NAD 83) AND ARE REFERRED TO THE CENTRAL POINT OF THE TOWNSHIP OF GOULBOURN (NAD 83) COORDINATE SYSTEM.
 LONGITUDE 76° 20' WEST; UTM ZONE 18 N
 DENOTES SURVEY MONUMENT FOUND
 DENOTES SURVEY MONUMENT PLANTED
 DENOTES SHORT STANDARD IRON BAR
 DENOTES IRON BAR
 DENOTES WITNESS
 DENOTES WITNESS UNKNOWN
 DENOTES MEASURED
 DENOTES MEASURED
 DENOTES PLAN 4R-1733
 DENOTES PLAN 4R-1733
 DENOTES PLAN 4R-1733
 DENOTES PLAN 4R-1733
 DENOTES PLAN 4R-1733
 DENOTES PLAN 4R-1733
 DENOTES PLAN 4R-1733

SURVEYOR'S CERTIFICATE
 I HEREBY CERTIFY THAT
 1. THIS SURVEY AND PLAN ARE CORRECT AND IN ACCORDANCE WITH THE SURVEY ACT AND THE REGULATIONS MADE UNDER THEREOF, AND
 2. THE SURVEY WAS COMPLETED ON THE 7th DAY OF FEB. 2005.
 DATE Feb 11, 2005
 STEPHEN A. TISHART
 OTTAWA LAND SURVEYOR

CORPORATE SERVICES
 DEPARTMENT
 SURVEYS AND MAPPING
 PROJECT BY: TERRY FOX DRIVE
 DRAWN BY: I.M.P. GALLAGHER
 CHECKED BY: S.A. TISHART
 FIELD WORK BY: I.D. FOSTER
 MS. NO.: 7822/05A
 DRAWING NO.: 10059
 DATE: 2005/02/07



PART	DESCRIPTION	PIN	AREA (SQ.M.)	REMARKS
1	PART OF LOT 31 CONCESSION 10	0478-0021	986.1	
2	PART OF THE ROAD ALLOWANCE BETWEEN LOTS 30 AND 31	0478-0051	100.6	
3		0478-0051	844.5	
4		0478-0051	336.8	
5		0478-0051	12.6	
6		0478-0051	13.7	
7		0478-0051	13.7	
8		0478-0051	13.7	
9		0478-0051	13.7	
10		0478-0051	13.7	
11		0478-0051	13.7	
12		0478-0051	13.7	
13		0478-0051	13.7	
14		0478-0051	13.7	
15		0478-0051	13.7	
16		0478-0051	13.7	
17		0478-0051	13.7	
18		0478-0051	13.7	

PART	DESCRIPTION	PIN	AREA (SQ.M.)	REMARKS
1	PART OF LOT 30 CONCESSION 10	0478-0021	12.1	
2	PART OF LOT 30 CONCESSION 10	0478-0021	13.2	
3	PART OF LOT 30 CONCESSION 10	0478-0021	9.8	

PART	DESCRIPTION	PIN	AREA (SQ.M.)	REMARKS
1	PART 1	0478-0021	171.87	
2	PART 2	0478-0021	20.88	
3	PART 3	0478-0021	14.56	
4	PART 4	0478-0021	14.56	
5	PART 5	0478-0021	14.56	
6	PART 6	0478-0021	14.56	
7	PART 7	0478-0021	14.56	
8	PART 8	0478-0021	14.56	
9	PART 9	0478-0021	14.56	
10	PART 10	0478-0021	14.56	
11	PART 11	0478-0021	14.56	
12	PART 12	0478-0021	14.56	
13	PART 13	0478-0021	14.56	
14	PART 14	0478-0021	14.56	
15	PART 15	0478-0021	14.56	
16	PART 16	0478-0021	14.56	
17	PART 17	0478-0021	14.56	
18	PART 18	0478-0021	14.56	

NOTE: PARTS 1 AND 14 COMPRISE PART OF PIN 0478-0021

PLAN 4R-20112
 RECEIVED AND DEPOSITED
 DATE Feb 11, 2005
 R. TISHART
 OTTAWA-CARLETON No. 4

REQUIRE THIS PLAN TO BE BY THE ACT AND THE LAND TILES ACT.
 DATE Feb 11, 2005
 R. TISHART
 OTTAWA-CARLETON No. 4

PLAN OF SURVEY OF
 PART OF LOTS 30 AND 31
 CONCESSION 10 AND
 PART OF THE ROAD ALLOWANCE
 BETWEEN LOTS 30 AND 31
 CONCESSION 10
 GEOGRAPHIC TOWNSHIP OF GOULBOURN
 CITY OF OTTAWA

STEPHEN A. TISHART, O.L.S.

SCALE - 1:1500
 METRES

METRIC
 DISTANCES SHOWN ON THIS PLAN ARE IN METRES AND
 CAN BE CONVERTED TO FEET BY DIVIDING BY 0.3048

NOTES & LEGEND
 BEARINGS HEREON ARE GRID BEARINGS AND ARE DERIVED FROM I.S.C.M. No. 8872 (1994) (NAD 83) AND ARE REFERRED TO THE CENTRAL POINT OF THE TOWNSHIP OF GOULBOURN (NAD 83) COORDINATE SYSTEM.
 LONGITUDE 76° 20' WEST; UTM ZONE 18 N
 DENOTES SURVEY MONUMENT FOUND
 DENOTES SURVEY MONUMENT PLANTED
 DENOTES SHORT STANDARD IRON BAR
 DENOTES IRON BAR
 DENOTES WITNESS
 DENOTES WITNESS UNKNOWN
 DENOTES MEASURED
 DENOTES MEASURED
 DENOTES PLAN 4R-1733
 DENOTES PLAN 4R-1733
 DENOTES PLAN 4R-1733
 DENOTES PLAN 4R-1733
 DENOTES PLAN 4R-1733
 DENOTES PLAN 4R-1733
 DENOTES PLAN 4R-1733

SURVEYOR'S CERTIFICATE
 I HEREBY CERTIFY THAT
 1. THIS SURVEY AND PLAN ARE CORRECT AND IN ACCORDANCE WITH THE SURVEY ACT AND THE REGULATIONS MADE UNDER THEREOF, AND
 2. THE SURVEY WAS COMPLETED ON THE 7th DAY OF FEB. 2005.
 DATE Feb 11, 2005
 STEPHEN A. TISHART
 OTTAWA LAND SURVEYOR

CORPORATE SERVICES
 DEPARTMENT
 SURVEYS AND MAPPING
 PROJECT BY: TERRY FOX DRIVE
 DRAWN BY: I.M.P. GALLAGHER
 CHECKED BY: S.A. TISHART
 FIELD WORK BY: I.D. FOSTER
 MS. NO.: 7822/05A
 DRAWING NO.: 10059
 DATE: 2005/02/07