

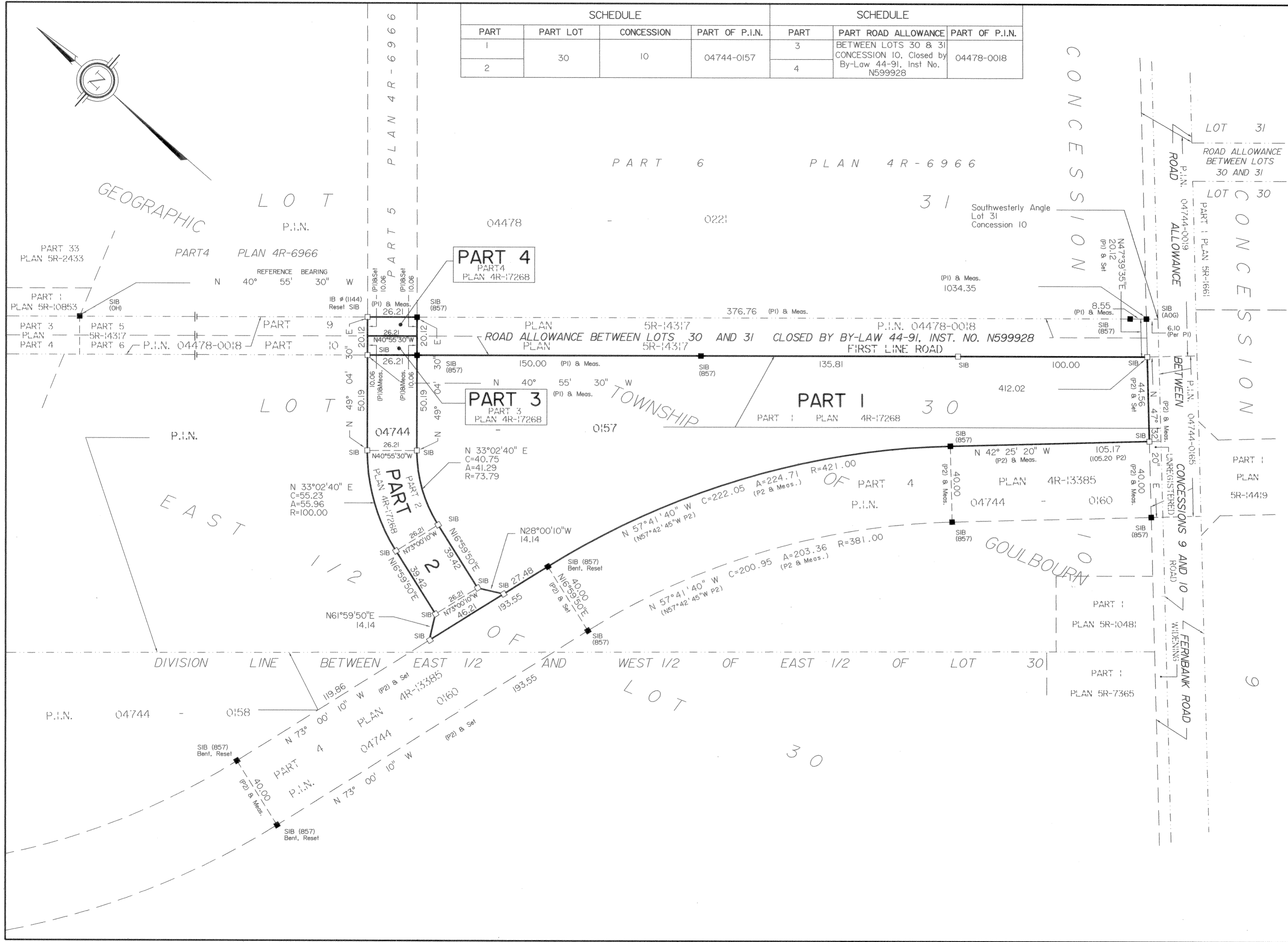
SCHEDULE				SCHEDULE		
PART	PART LOT	CONCESSION	PART OF P.I.N.	PART	PART ROAD ALLOWANCE	PART OF P.I.N.
1				3	BETWEEN LOTS 30 & 31 CONCESSION 10, Closed by By-Law 44-91, Inst. No. N599928	04478-0018
2	30	10	04744-0157	4		

I REQUIRE THIS PLAN TO BE DEPOSITED UNDER THE LAND TITLES ACT.  
 DATED December 13, 2001

PLAN 4R-17373  
 RECEIVED AND DEPOSITED  
 DATED December 13, 2001

Edward M. Lancaster  
 EDWARD M. LANCASTER  
 ONTARIO LAND SURVEYOR

ASST. REG.  
 D. TRICKORIC  
 LAND REGISTRAR FOR THE  
 LAND TITLES DIVISION OF  
 OTTAWA-CARLETON NO. 4.



**PLAN OF SURVEY OF**  
**PART OF THE ROAD ALLOWANCE BETWEEN**  
**LOTS 30 AND 31, CONCESSION 10**  
 (CLOSED BY BY-LAW 44-91, INST. No. N599928)  
**AND PART OF LOT 30, CONCESSION 10**  
 Geographic Township of Goulbourn  
 FORMERLY THE CITY OF KANATA  
 NOW CITY OF OTTAWA

Surveyed by  
**ANNIS, O'SULLIVAN, VOLLEBEKK LTD.**



**Metric**  
 DISTANCES SHOWN ON THIS PLAN ARE IN METRES  
 AND CAN BE CONVERTED TO FEET BY DIVIDING BY  
 0.3048

**Surveyor's Certificate**  
 I CERTIFY THAT:  
 1. This survey and plan are correct and in accordance with The Surveys Act, The Surveyors Act and The Land Titles Act and the regulations made under them.  
 2. The survey was completed on 17th day of May, 2001.

December 13, 2001  
 Date

Edward M. Lancaster  
 EDWARD M. LANCASTER  
 ONTARIO LAND SURVEYOR

**Notes & Legend**

□	Denotes	Survey Monument Planted.
■	"	Survey Monument Found.
SIB	"	Standard Iron Bar.
SSIB	"	Short Standard Iron Bar.
IB	"	Iron Bar.
Wit.	"	Witness
(P1)	"	Plan 5R-14317
(P2)	"	Plan 4R-13385
Meas.	"	Measured
(AOG)	"	Annis, O'Sullivan, Vollebekk Ltd.

Bearings are astronomic derived from easterly limit of Plan 5R-14317 shown to be N 40° 55' 30" W thereon.

**ANNIS, O'SULLIVAN, VOLLEBEKK LTD.**  
**Ontario Land Surveyors**  
 14 CONCOURSE GATE, SUITE 500, NEPEAN, ONTARIO K2E 7S6  
 TEL.(613)727-0850 FAX(613)727-1079

2184CON.DWG