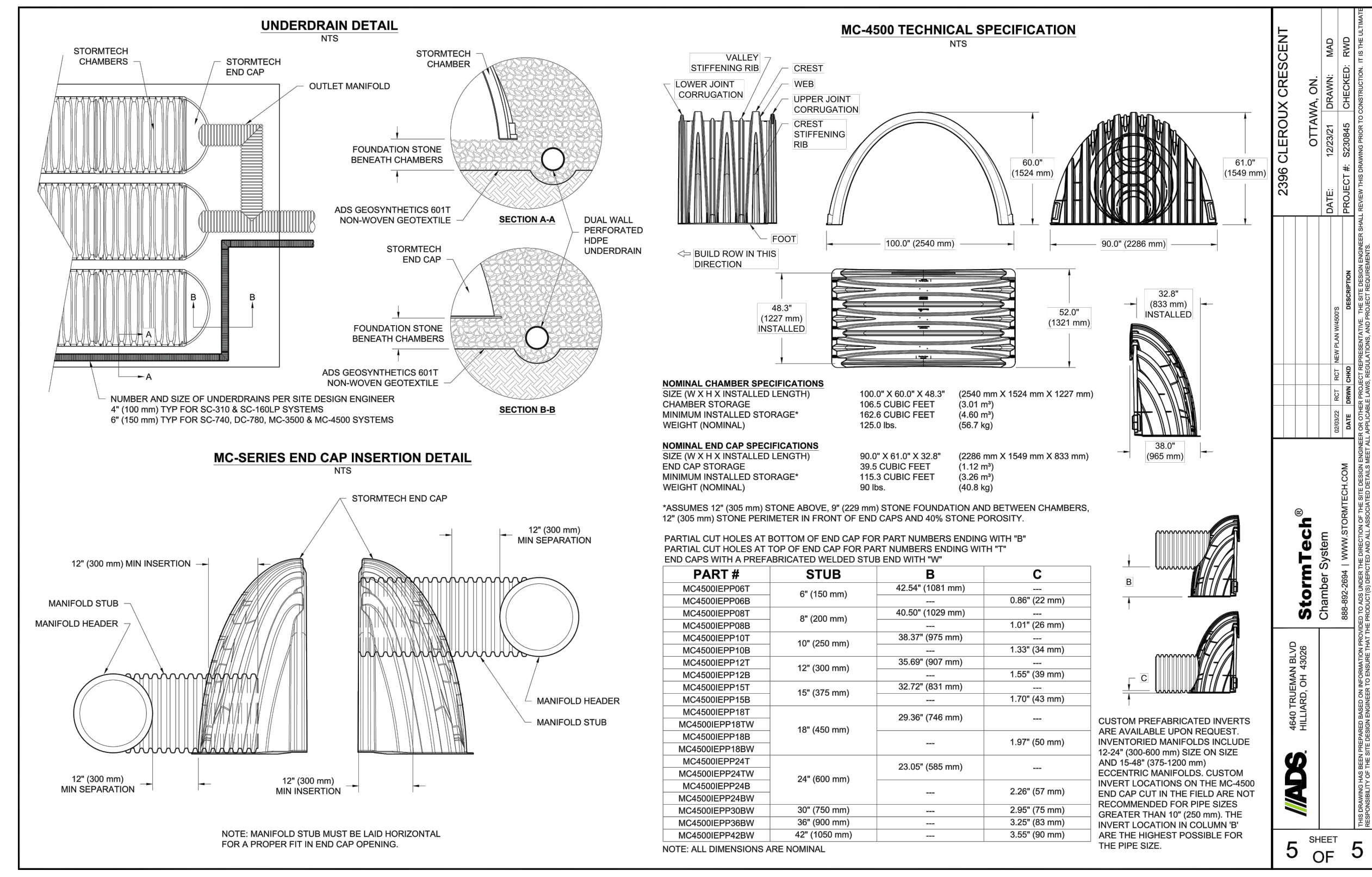
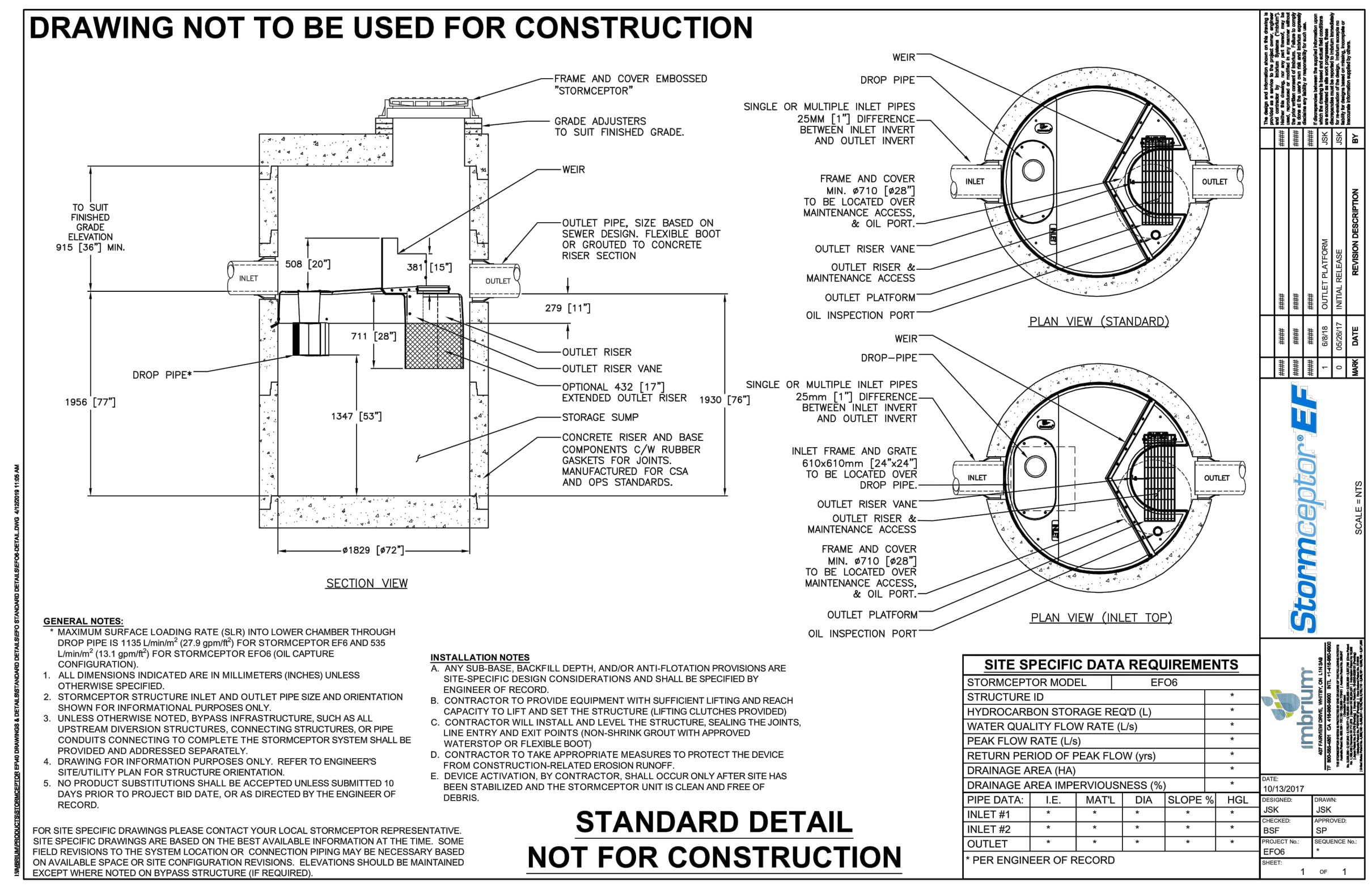


COPYRIGHT RESERVED
 THE CONTRACTOR SHALL VERIFY AND BE RESPONSIBLE OF ALL DIMENSIONS. DO NOT SCALE THE DRAWING. ANY ERRORS OR OMISSIONS SHALL BE REPORTED TO BLANCHARD LETENDRE ENGINEERING LTD. WITHOUT DELAY. THE CONTRACTOR'S ALL DESIGN AND DRAWINGS ARE THE PROPERTY OF BLANCHARD LETENDRE ENGINEERING LTD. REPRODUCTION OR USE FOR ANY PURPOSE OTHER THAN THAT AUTHORIZED BY BLANCHARD LETENDRE ENGINEERING LTD. IS STRICTLY PROHIBITED.



2396 CLEROUX CRESCENT
 OTTAWA, ON.
 DATE: 02/23/2022
 PROJECT #: 2020060
 CHECKED BY: RWD
 DRAWN BY: BF+GB
 SCALE: AS SHOWN
 SHEET NO: 5 OF 5
 StormTech
 4640 TREEMAN BLVD
 MISSISSAUGA, ON L4W 5J6
 ADS
 4640 TREEMAN BLVD
 MISSISSAUGA, ON L4W 5J6



Stormceptor® EF
 imbitum
 4000 SHEPPARD AVENUE EAST, UNIT 10
 SCARBORA, ONTARIO M1S 1T6
 TEL: 416-291-1111
 WWW.IMBITUM.COM

ENGINEERING STAMP

LICENSED PROFESSIONAL ENGINEER
 G. L. BRUNET
 10015086
 04 Feb 2022
 PROVINCE OF ONTARIO

#	ISSUED FOR SPA	DATE (DDMMYYYY)
#0		
#1	ISSUED FOR SPA	04/02/2022
#2	ISSUED FOR SPA	19/03/2021
#3		
#4		
#5		
#6		
#7		
#8		
#9		
#10		

BLANCHARD LETENDRE ENGINEERING
 757, Notre Dame, Local 42, Embury, Ontario, K3A 1M1
 (613) 693-0700
 blengrntg.ca

CLIENT:
 BRIDOR DEVELOPMENTS
 996-8 ST. AUGUSTIN RD.
 EMBURY, ON

PROJECT:
 NEW RESIDENTIAL DEVELOPMENT
 2396 CLEROUX CRES.
 OTTAWA, ON

DRAWING:
 DETAILS - 1

PAPER FORMAT: 24x36	PAGE: 5
DRAWN BY: BF + GB	C501
CHECKED BY: GB	
DATE: 02-2022	
SCALE:	
PROJECT NUMBER: 20-305	

DWG # 18569