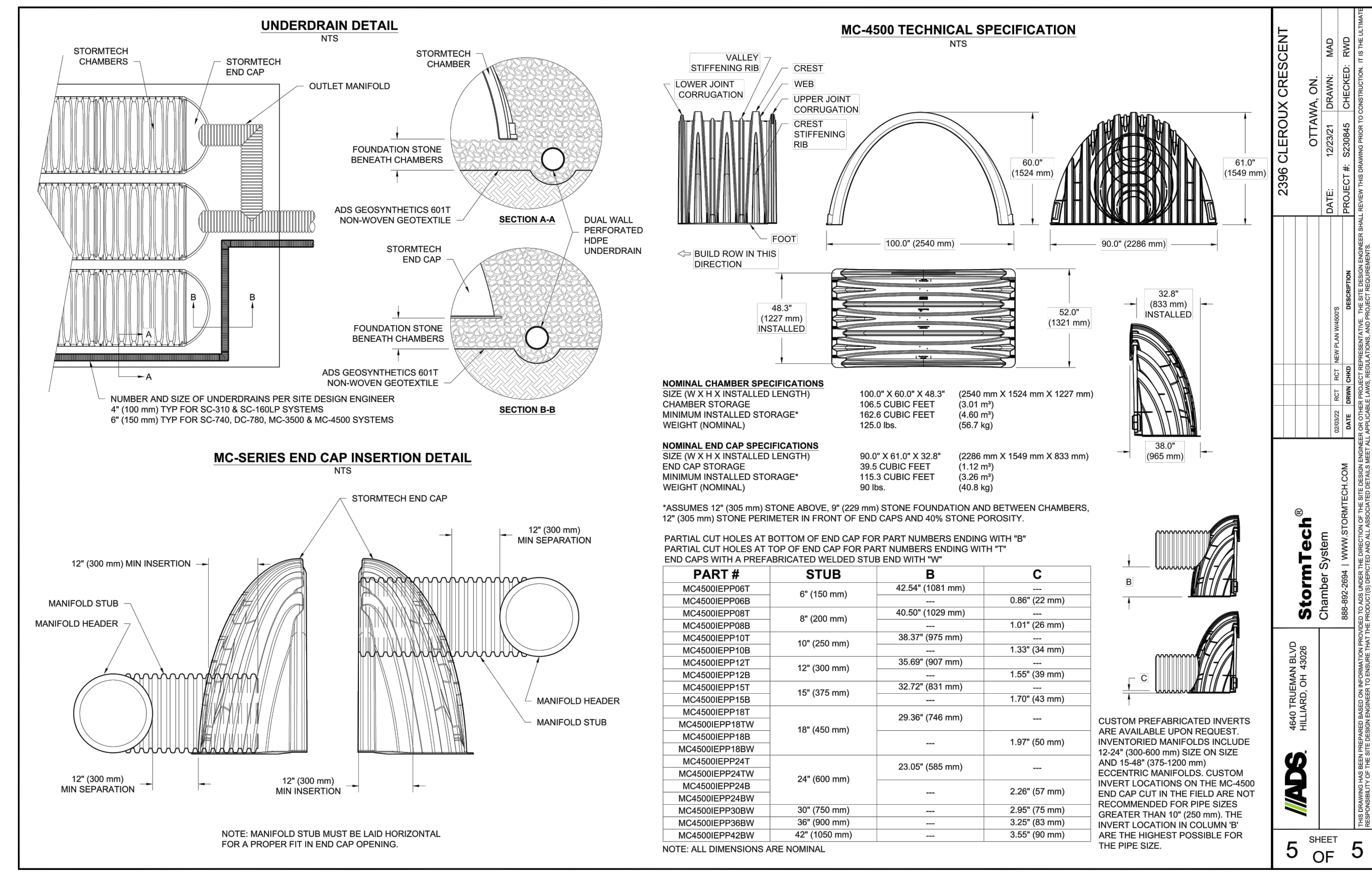


COPYRIGHT RESERVED
 THE CONTRACTOR SHALL VERIFY AND BE RESPONSIBLE OF ALL DIMENSIONS. DO NOT SCALE THE DRAWING. ANY ERRORS OR OMISSIONS SHALL BE REPORTED TO BLANCHARD LETENDRE ENGINEERING LTD. WITHOUT DELAY. THE CONTRACTOR'S ALL DESIGN AND DRAWINGS ARE THE PROPERTY OF BLANCHARD LETENDRE ENGINEERING LTD. REPRODUCTION OR USE FOR ANY PURPOSE OTHER THAN THAT AUTHORIZED BY BLANCHARD LETENDRE ENGINEERING LTD. IS STRICTLY PROHIBITED.

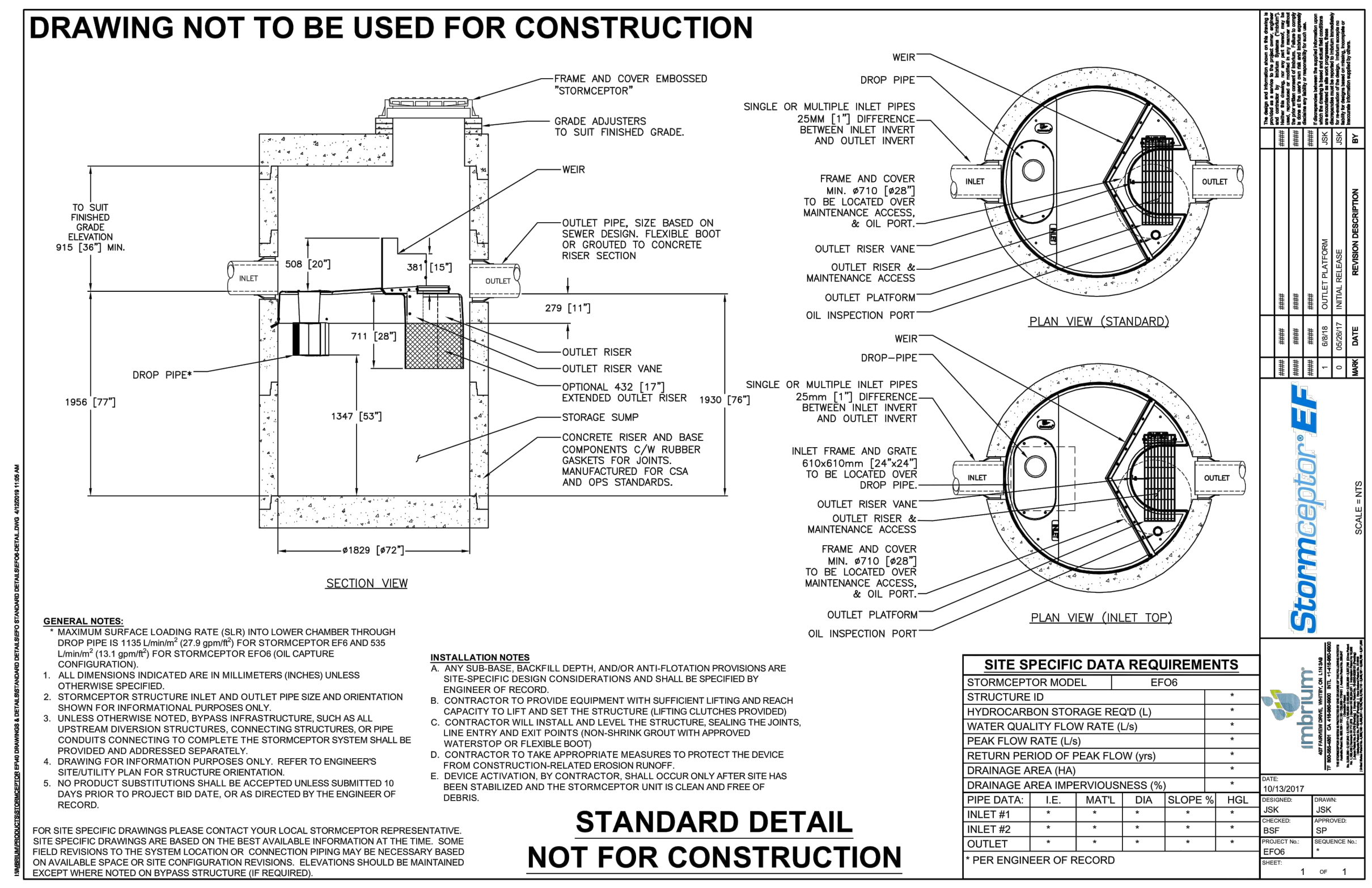


2396 CLEROUX CRESCENT
 OTTAWA, ON.
 DATE: 02/23/21
 PROJECT #: 2020060
 CHECKED BY: RWD
 DRAWN BY: BF+GB
 REVISIONS:
 NO. DATE BY DESCRIPTION
 1 02/23/21 BF+GB
 2 02/23/21 BF+GB
 3 02/23/21 BF+GB
 4 02/23/21 BF+GB
 5 02/23/21 BF+GB

StormTech®
 CHAMBER OF STORM™
 MANIFOLD ON 4500

ADS
 4640 TREEMAN BLVD
 MISSISSAUGA, ON L4W 5G6

5 SHEET
 OF 5



ENGINEERING STAMP



NO.	REVISION	DATE (DDMMYYYY)
#3	ISSUED FOR SPA	14/06/2022
#2	ISSUED FOR SPA	04/02/2022
#1	ISSUED FOR SPA	19/03/2021

BLANCHARD LETENDRE ENGINEERING
 767, Notre Dame, Local 42, Embrun, Ontario,
 (613) 693-0700 K0A 1R1 blengr.com

CLIENT:
BRIDOR DEVELOPMENTS
 996-B ST. AUGUSTIN RD.
 EMBRUN, ON

PROJECT:
NEW RESIDENTIAL DEVELOPMENT
 2380, 2396 CLEROUX CRES,
 OTTAWA, ON

DRAWING:
DETAILS - 1

PAPER FORMAT: 24x36
 DRAWN BY: BF + GB
 CHECKED BY: GB
 DATE: 07-2022
 SCALE:
 PROJECT NUMBER: 20-305

PAGE:
C501