

SCHEDULE			
PART	LOT	CONCESSION	PIN
1	PART OF 11	3 (Ottawa Front)	PART OF 04403-0311

Part 1 is subject to easement Inst. OC2556224

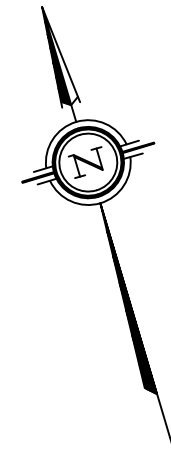
PLAN 4R-35848

Received and deposited

December 6th, 2023

Monica Canas

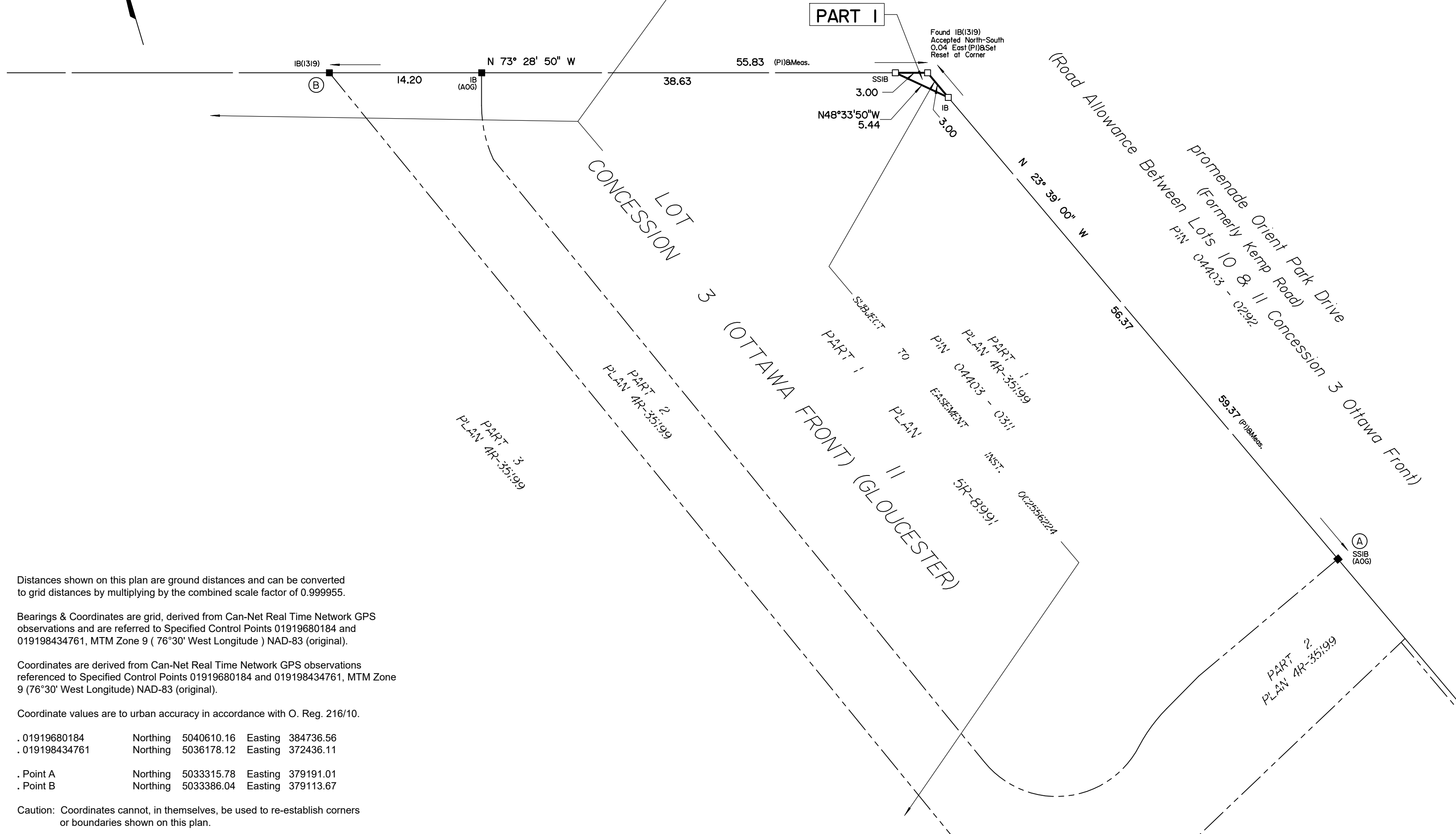
Representative for the
Land Registrar for the
Land Titles Division of
Ottawa-carleton (No.4)



croissant Cleroux Crescent
(Formerly Cyrville-Navan Road, Regional Road No. 28)

(DEPOSITED PLAN GL75078)

PIN 04403 - 0575



**PLAN OF SURVEY OF
PART OF LOT 11
CONCESSION 3 (Ottawa Front)
(Geographic Township of Gloucester)
CITY OF OTTAWA**

Surveyed by Annis, O'Sullivan, Vollebakk Ltd.

Scale 1 : 300



The intended plot size of this plan is 610 mm in width by 355 mm in height when plotted at a scale of 1:300.

Metric

**DISTANCES AND COORDINATES SHOWN ON THIS PLAN
ARE IN METRES AND CAN BE CONVERTED TO FEET BY
DIVIDING BY 0.3048.**

Surveyor's Certificate

I CERTIFY THAT :

1. This survey and plan are correct and in accordance with the Surveys Act, the Surveyors Act, the Land Titles Act and the regulations made under them.
2. The survey was completed on October 25, 2023.

December 5, 2023
Date

Tyler J. Allison
Ontario Land Surveyor

This plan of survey relates to AOLS Plan Submission form number: V-59872

Notes & Legend

- Denotes Survey Monument Planted
- " Survey Monument Found
- SIB " Standard Iron Bar
- SSIB " Short Standard Iron Bar
- IB " Iron Bar
- (WIT) " Witness
- (AOG) " Annis, O'Sullivan, Vollebakk Ltd.
- Meas. " Measured
- (P1) " Plan 4R-35199

Distances shown on this plan are ground distances and can be converted to grid distances by multiplying by the combined scale factor of 0.999955.

Bearings & Coordinates are grid, derived from Can-Net Real Time Network GPS observations and are referred to Specified Control Points 01919680184 and 019198434761, MTM Zone 9 (76°30' West Longitude) NAD-83 (original).

Coordinates are derived from Can-Net Real Time Network GPS observations referenced to Specified Control Points 01919680184 and 019198434761, MTM Zone 9 (76°30' West Longitude) NAD-83 (original).

Coordinate values are to urban accuracy in accordance with O. Reg. 216/10.

. 01919680184	Northing	5040610.16	Easting	384736.56
. 019198434761	Northing	5036178.12	Easting	372436.11

. Point A	Northing	5033315.78	Easting	379191.01
. Point B	Northing	5033386.04	Easting	379113.67

Caution: Coordinates cannot, in themselves, be used to re-establish corners or boundaries shown on this plan.



ANNIS, O'SULLIVAN, VOLLEBEKK LTD.

165 Bay Street
Embrun, Ont. K0A 1W1
Phone: (613) 443-3364
Email: Embrun@aovltd.com

Ontario
Land Surveyors

Job No. E-3433-23

BIN