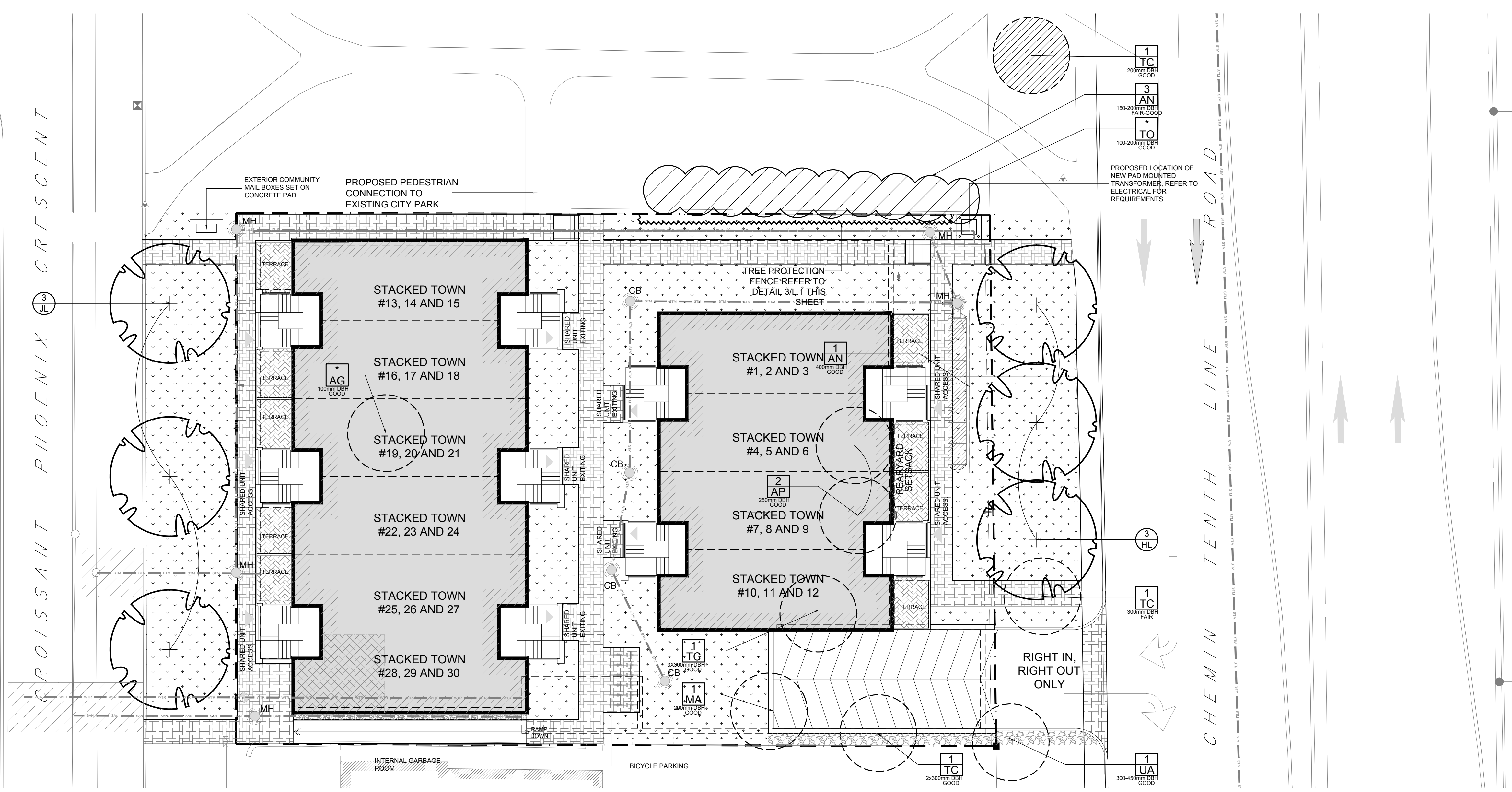
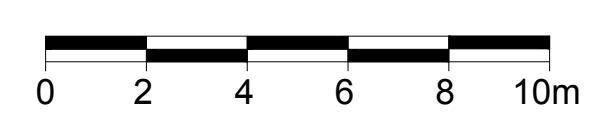
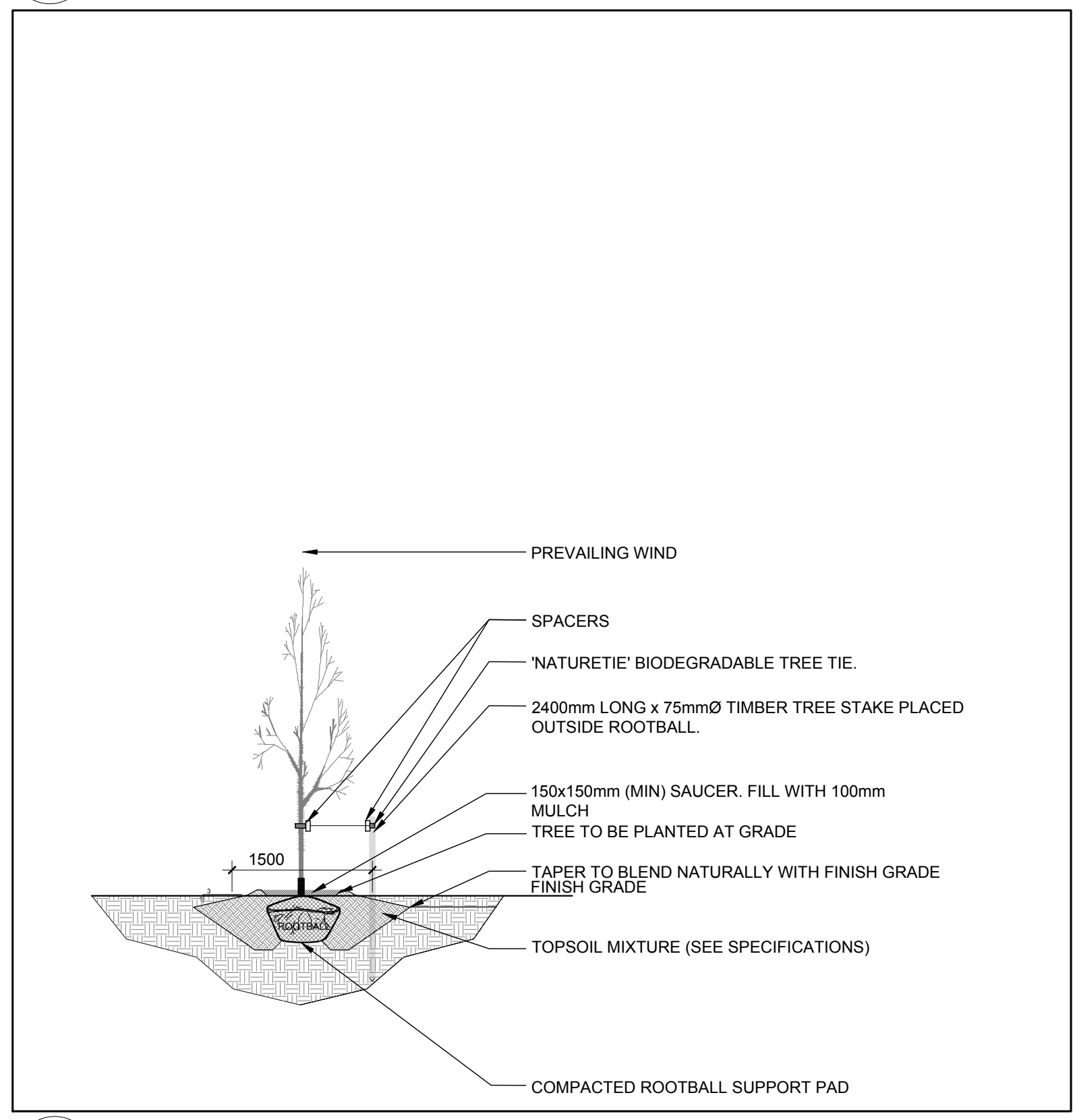


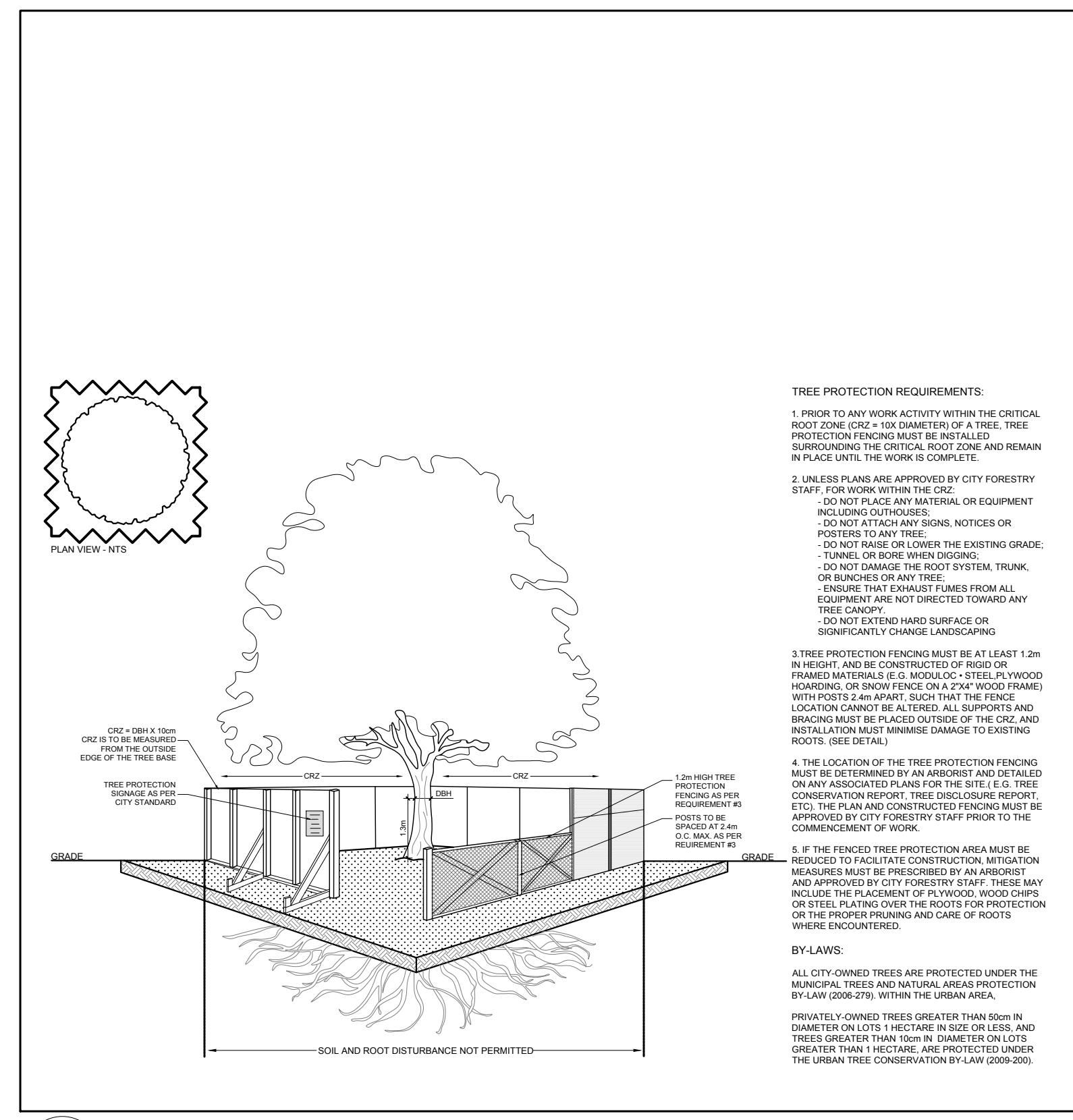
- GENERAL NOTES:**
1. It is the responsibility of the appropriate contractor or official to report any errors, omissions or discrepancies on this plan with actual site conditions to the Landscape Architect before proceeding with construction.
  2. The contractor is to notify all utility companies and authorities prior to any excavation and ascertain locations of underground services.
  3. The contractor is to reinstate all areas and items damaged as a result of construction activity.
  4. The contractor is to comply with all pertinent codes and by-laws.
  5. The contractor is to maintain a positive surface run-off throughout the entire construction period.
  6. The Landscape Architect is not responsible for subsurface conditions.
  7. The contractor is to identify all existing trees to remain on site with the Landscape Architect prior to construction.
  8. The contractor is to stake the proposed location of all plant material in conjunction with the Landscape Architect prior to excavation.
  9. Minimum distances for selected deciduous trees are as follows:
    - Building Foundations 7.5m
    - Sidewalks 1.5m
    - Public Streets 2.5m
    - Underground Infrastructure 2.0m
  10. All trees within 1m of underground utility trenches are to be excavated by hand.
  11. Remove all protective wrapping from tree trunks after installation.
  12. Staking of trees shall only be performed if necessary.
  13. Ensure that mulch is pulled back a min. distance of 75mm from base of tree trunk.



1 L.1 TREE CONSERVATION REPORT & LANDSCAPE PLAN  
SCALE 1:150



2 L.1 DECIDUOUS TREE PLANTING  
SCALE: NTS



3 L.1 TREE PROTECTION FENCE  
SCALE: NTS

**PROPOSED PLANT LIST** QTY KEY

KEY	QTY	BOTANICAL NAME	COMMON NAME	SIZE	CONDITION	REMARKS
HL	3	Gleditsia triacanthos 'Draves'	Street Keeper Honey Locust	60mm cal.	B&B	Single leader
JL	3	Syringa reticulata	Japanese Tree Lilac	60mm cal.	B&B	

**EXISTING TREE LIST** QTY KEY

KEY	QTY	BOTANICAL NAME	COMMON NAME	SIZE	CONDITION	REMARKS
AG	-	Acer ginnala	Amur Maple	100mm dbh	Good	To be removed
AN	4	Acer negundo	Manitoba Maple	150-400mm dbh	Fair-Good	See plan
AP	2	Acer platanoides	Freeman's Maple	250mm dbh	Good	To be removed
MA	1	Mallus sp.	Crabapple	200mm dbh	Good	To be removed
TC	4	Tilia cordata	Littleleaf Linden	200-300mm dbh	Fair-Good	See plan
TO	*	Thuja occidentalis	White Cedar	100-200mm dbh	Good	To remain
UA	1	Ulmus americana	American Elm	2x400-450mm dbh	Good	To remain

\*DENOTES NUMEROUS

CLIENT: **BRIDOR** Developments  
994-B St. Augustin Rd  
Emerson, ON N2A 1Y0  
Tel: (613) 443-3271

CONSULTANTS  
ARCHITECTS: **P2 concepts**  
739 RIDGEWOOD AVE., UNIT 201  
OTTAWA, ONTARIO, K1V 6A8

CIVIL ENGINEERS:  
**BLANCHARD LETENDRE**  
ENGINEERING  
787 Notre-Dame St. Studio 42  
Emerson, ON N2A 1Y0  
Tel: (613) 693-2700

LEGEND  

- PROPOSED PRECAST CONCRETE PAVERS TYPE I
- PROPOSED PRECAST CONCRETE PAVERS TYPE II
- PROPOSED DECIDUOUS TREE
- PROPOSED SOD
- PROPOSED RIVERSTONE MULCH
- PROPOSED TREE PROTECTION FENCE

2	RE-ISSUED FOR SITE PLAN CONTROL	04/19/2021	ML	JL
1	ISSUED FOR SITE PLAN CONTROL	03/09/2021	ML	JL

No. Issue Date DR CK

**JAMES B. LENNOX & ASSOCIATES INC.**  
**LANDSCAPE ARCHITECTS**  
3332 CARLING AVE. OTTAWA, ONTARIO K2H 5A8  
Tel. (613) 722-5168 Fax. (1-866) 343-3942

PROJECT  
STACKED TOWNHOUSES  
1592 TENTH LINE ROAD, OTTAWA ON

DRAWING  
TREE CONSERVATION REPORT &  
LANDSCAPE PLAN

STAMP

SCALE  
AS SHOWN  
START DATE  
FEBRUARY 2021  
PROJECT NO.

PROJECT NORTH  
DRAWING NO.  
**L.1**  
PLOT SIZE ARCH-D