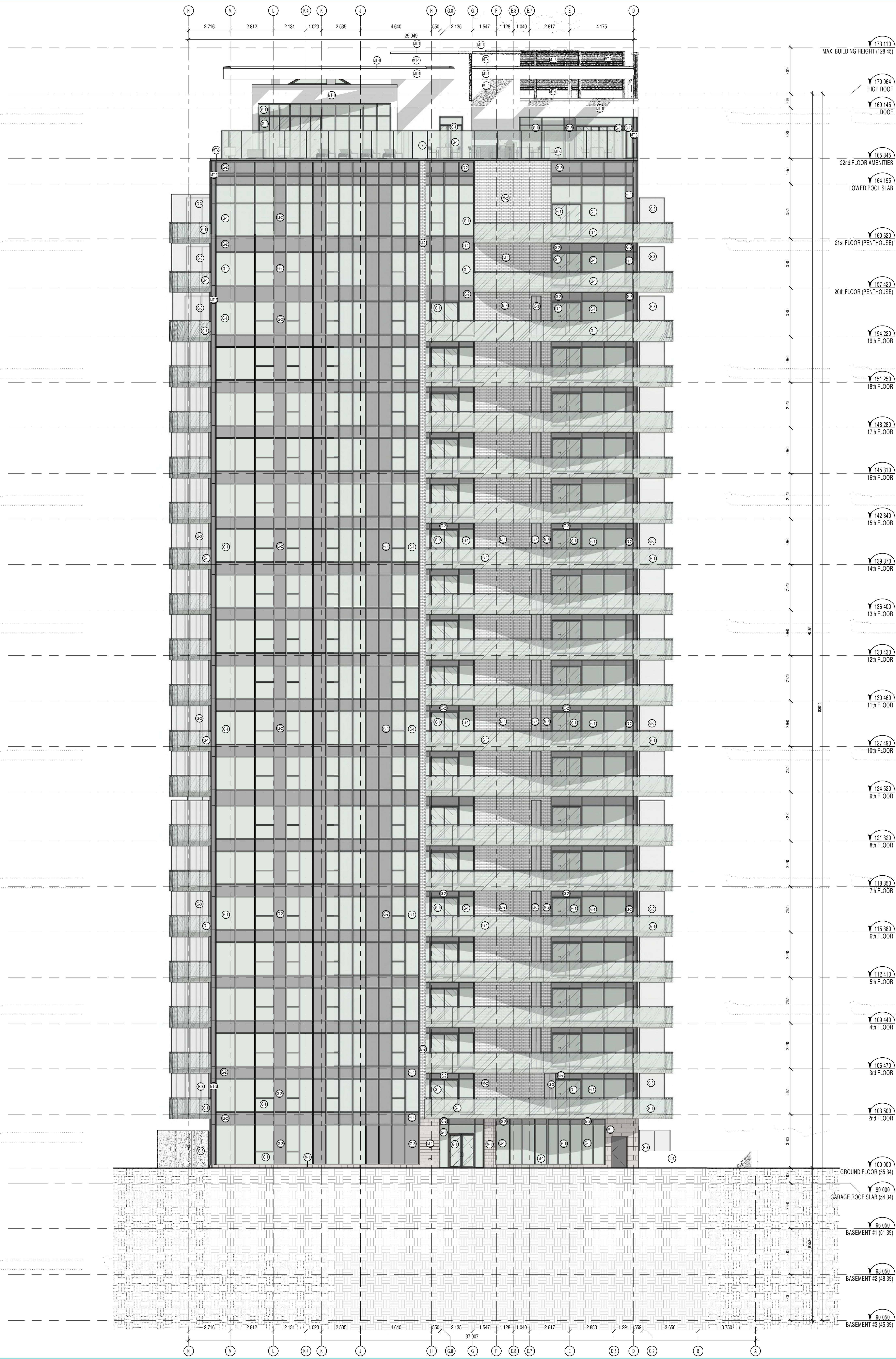


G. Wildman
GERALDINE WILDMAN
 ACTING MANAGER, DEVELOPMENT REVIEW EAST
 PLANNING, REAL ESTATE & ECONOMIC DEVELOPMENT
 DEPARTMENT, CITY OF OTTAWA

APPROVED
 By Geraldine Wildman at 2:36 pm, Nov 10, 2022



SOIL LEGEND

SOIL
 FINISHED GRADE

MATERIALS LEGEND

- C-1 EXPOSED CONCRETE
- G-1 GLASS - TYPE 1 (CLEAR)
- G-2 SPANDREL GLASS - TYPE 2 (CHARCOAL CERAMIC FRIT CS-00004)
- G-3 PRIVACY SCREENS - FINHEAD TEXTURED
- M-1 MASONRY VENEER - TYPE 1 (STONE SHOULDER, COLOUR: PEARL WHITE, TAPESTRY (NO BEVEL) 390x195mm SEE STONE COURSING)
- M-2 MASONRY VENEER - TYPE 3 (BRICK SHOULDER - M) BRICK SMOOTH, COLOUR: PEARL WHITE, JOINT METRIC (20x60x90mm)
- MT-1 ALUMINUM - TYPE 1 (WHITE - STANDARD SERIES - DURANAR XL RL 816)
- MT-2 ALUMINUM - TYPE 2 (CAMBRIDGE WHITE - VICREST - AD-300SR)
- MT-3 ALUMINUM - TYPE 3 (CHARCOAL - 180)

ABBREVIATIONS/SYMBOL LEGEND

C.V. CONTROL JUNT BEARING COLOUR TO MATCH ADJACENT VENEER;
 L.L. PRIMED & PAINTED LOOSE UNIT; COLOUR TO MATCH ADJACENT VENEER;
 S.S. PRIMED & PAINTED SHELF ANGLE COLOUR TO MATCH ADJACENT VENEER;
 S.S.A. PRIMED & PAINTED SUSPENDED SHELF ANGLE COLOUR TO MATCH ADJACENT VENEER;
 S.S. SUPPORT STRUCTURE (OPENING OVER ROOM); STRUCTURAL, EYES, JOBS AND SHELF ANGLE ABOVE WINDOW UNIT; SEE STRUCTURAL ENGINEER FOR TYPES, SPACING, DIMENSIONS, AND/OR SHIELD LOCATIONS, ETC.

□ SINGLE EXHAUST VENT*
 □ DOUBLE EXHAUST VENT*
 □ TRIPLE EXHAUST VENT*
 □ QUADRUPLE EXHAUST VENT*

* ALL EXHAUST VENT LOCATION TO BE VERIFIED AND COORDINATED WITH MECHANICAL ENGINEER

REFER TO A-802 FOR BRICK COURSING DETAILS. FOR OTHER BRICK SIZES AND TYPES, COURSING MUST BE ADAPTED TO THE STONE COURSING AND ROUGH OPENINGS AS INDICATED IN THESE DRAWINGS.

NOTES GÉNÉRALES - General Notes

- Ces documents d'architecture sont la propriété exclusive de NEUF architectes et ne peuvent être utilisés, reproduits ou copiés sans autorisation écrite préalable. / These architectural documents are the exclusive property of NEUF architects and cannot be used, copied or reproduced without written prior authorization.
- Les dimensions apparaissant aux documents doivent être vérifiées par l'entrepreneur avant le début des travaux. / All dimensions which appear on the documents must be verified by the contractor before to start the work.
- Vous êtes averti(e) que tous les documents doivent être vérifiés par l'entrepreneur avant le début des travaux. / You are notified that all documents must be verified by the contractor before to start the work.
- Les dimensions sur ces documents doivent être lues et non mesurées. / The dimensions on these documents must be read and not measured.

STRUCTURE - Structural
Loroux & Cyr
 500 boul. Duval Est, Bureau 105, Montréal QC H3L 3R9
 T: 438-381-1772 Courriel: gjenoux@loroux-cyr.com

MÉCANIQUE ÉLECTRIQUE - Mechanical/Electrical
Goodkey, Weedmark & Associates Ltd.
 1888 Woodward Drive, Ottawa ON K2C 3P8
 T: 613-727-5111 Email: mason@goodkey.com

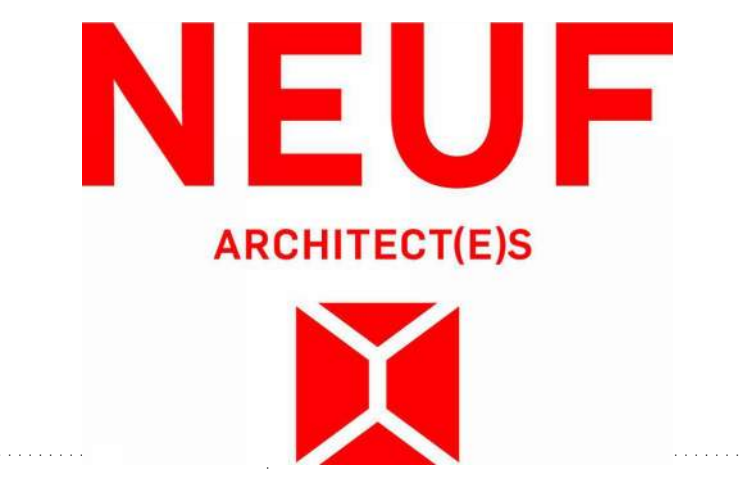
ARCHITECTURE DE PAYSAGE - Landscape Architect
Paterson Group
 184 Colborne Street South, Ottawa ON K2E 7J6
 T: 613-228-7381 (253) Email: Carlos@patersongroup.ca

GÉOTECHNIQUE - Geotechnical
Levetek Consultants Inc.
 8111 St. Laurent, Ottawa ON K2A 2K6
 T: 613-826-0518 Email: revish@levetek.com

CIVIL - Civil
exp Services Inc.
 2655 Queensway Drive, Suite 100, Ottawa ON K2A 2T0
 T: 613-733-6322 Email: kevin@exp.com
 jason.fitzpatrick@exp.com

ARCHITECTES - Architect
NEUF architect(e)s
 630, boul. René-Lévesque O, 32e étage, Montréal QC H3B 1S6
 T: 514-847-1117 NEUFarchitectes.com

SCEAU / Seal



OUVRAGE - Project
PETRIE'S LANDING I - TOWER 4

EMPLACEMENT - Location
 ORLEANS, ON NO PROJET No. 12190.00

NO	REVISION	DATE (aa-mm-jj)
1	For Coordination	2019-10-15
2	For Coordination	2019-11-06
3	30% ISSUE	2020-03-31
4	40% ISSUE	2020-04-30
5	For SPA Review Approval	2021-05-04
6	ISSUED FOR PERMITAL REVIEW - ARCHITECT	2021-06-03
7	ISSUED FOR PERMITAL REVIEW - ARCHITECT	2021-09-10
8	ISSUED FOR SPA REVIEW	2021-10-10
9	ISSUED FOR BRIGIL REVIEW/PERMIT	2021-11-01
10	For Approval SPA Review	2021-12-10
11	FOR DRAFT PERMIT	2021-12-01
12	ISSUED FOR PERMIT	2021-12-15
13	For Approval SPA Review	2022-01-08

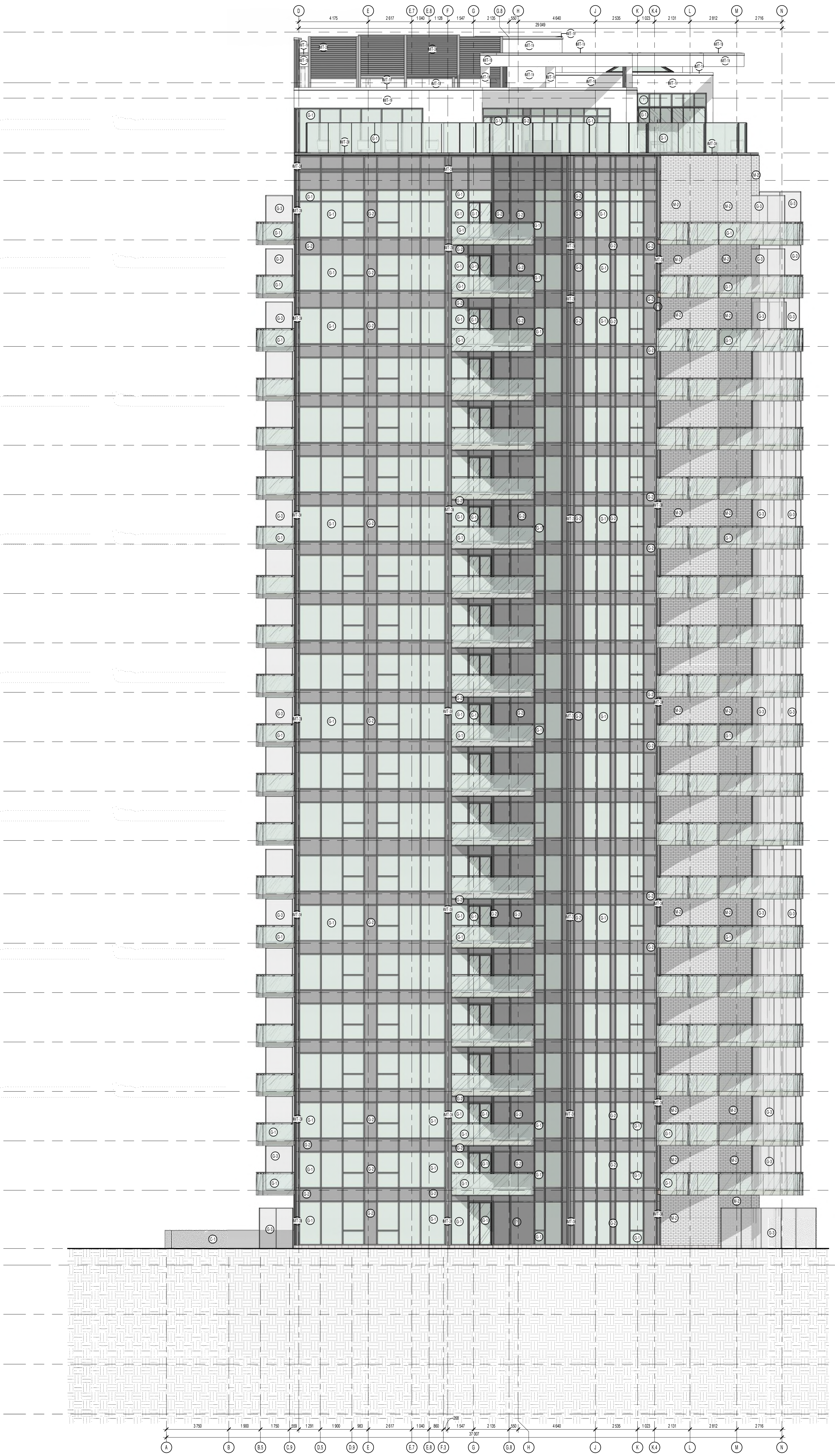
DESSINÉ PAR Drawn by **MU/RR** VÉRIFIÉ PAR Checked by **MU**
 DATE (aa-mm-jj) 10/15/2019 ÉCHELLE Scale As
 TITRE DU DESSIN Drawing Title SOUTH ELEVATION indicated

C:\Fichiers Revit\Locaux\PLT_12190_AFC_F20_rroad.rvt

G. Wildman

GERALDINE WILDMAN
 ACTING MANAGER, DEVELOPMENT REVIEW EAST
 PLANNING, REAL ESTATE & ECONOMIC DEVELOPMENT
 DEPARTMENT, CITY OF OTTAWA

APPROVED
 By Geraldine Wildman at 2:37 pm, Nov 10, 2022



SOIL LEGEND

SOIL
 FINISHED GRADE

MATERIALS LEGEND

(C1) EXPOSED CONCRETE
 (G1) GLASS - TYPE 1 (CLEAR)
 (G2) SPANDREL GLASS - TYPE 2 (CHARCOAL CERAMIC FRIT GS-0054)
 (G3) PRIVACY SCREENS - FINISH TEXTURED
 (M1) MASONRY VENEER - TYPE 1 (STONE SHOULDER, COLOUR: PEARL WHITE, TAPESTRY NO. REVILLI 200/WH/WH/SEE STONE COURSING)
 (M2) MASONRY VENEER - TYPE 2 (BRICK SHOULDER, ALL BRICK SMOOTH, COLOUR: PEARL WHITE, 2000 METRIC 200/60/60mm)
 (MT-1) ALUMINUM - TYPE 1 (WHITE STANDARD SERIES - DUNBAR XL RAL 9016)
 (MT-2) ALUMINUM - TYPE 2 (CAMBRIDGE WHITE - VICWEST - AD-3035R)
 (MT-3) ALUMINUM - TYPE 3 (CHARCOAL - T80)

ABBREVIATIONS/SYMBOL LEGEND

C.J. CONTROL JOINT (SEALANT COLOUR TO MATCH ADJACENT VENEER)
 S.L. PRIMED & PAINTED LOOSE LINTEL, COLOUR TO MATCH ADJACENT VENEER
 S.S. PRIMED & PAINTED SHELF ANGLE, COLOUR TO MATCH ADJACENT VENEER
 S.S. PRIMED & PAINTED SUPPLEMENT SHELF ANGLE, COLOUR TO MATCH ADJACENT VENEER
 S.S. SUPPORT STRUCTURE OPENINGS OVER 3000mm - STRUCTURAL STEEL, WELD AND SHELF ANGLE ABOVE WINDOW UNIT. SEE STRUCTURAL ENGINEER FOR TYPES, SPACING, DIMENSIONS, ANCHORAGE, LOCATIONS, ETC.

□ SINGLE EXHAUST VENT*
 □ DOUBLE EXHAUST VENT*
 □ TRIPLE EXHAUST VENT*
 □ QUADRUPLE EXHAUST VENT*

* ALL EXHAUST VENT LOCATION TO BE VERIFIED AND COORDINATED WITH MECHANICAL ENGINEER.

REFER TO A-802 FOR BRICK COURSING DETAILS. FOR OTHER BRICK SIZES AND TYPES, COURSING MUST BE ADAPTED TO THE STONE COURSING AND ROUGH OPENINGS AS INDICATED IN THESE DRAWINGS.

NOTES GÉNÉRALES / General Notes

1. Ces documents d'architecture sont la propriété exclusive de NEUF architectes et ne peuvent être utilisés, reproduits ou copiés sans autorisation écrite préalable. / These architectural documents are the exclusive property of NEUF architects and cannot be used, copied or reproduced without written prior authorization.

2. Les dimensions apparaissant sur ces documents doivent être vérifiées par l'entrepreneur avant le début des travaux. / All dimensions which appear on the documents must be verify by the contractor before to start the work.

3. Veuillez aviser l'architecte de toute dimension erreur et/ou changements entre ces documents et ceux des autres professionnels. / The architect must be notified of all errors, omissions and discrepancies between these documents and those of the others professionals.

4. Les dimensions sur ces documents doivent être lues et non mesurées. / The dimensions on these documents must be read and not measured.

STRUCTURE / Structural
Loroux & Cyr
 500 boul. Clouet Est, Bureau 105, Montréal QC H3L 3R9
 T: 438-381-7772 Courriel: gjenoux@loroux-cyr.com

MÉCANIQUE ÉLECTRIQUE / Mechanical/Electrical
Goodkey, Weedmark & Associates Ltd.
 1888 Woodward Drive, Ottawa ON K2C 3P8
 T: 613-727-5111 Email: mason@goodkey.com

ARCHITECTURE DE PAYSAGE / Landscape Architect
Paterson Group
 184 Colborne Street South, Ottawa ON K2E 7J6
 T: 613-226-7381 (253) Email: Callisto@patersongroup.ca

GÉOTECHNIQUE / Geotechnical
Levetek Consultants Inc.
 8171 Capwell Crescent, Ottawa ON K6A 2K2
 T: 613-826-0518 Email: rlevetek@larocquevetek.com

CIVIL / Civil
exp Services Inc.
 2655 Queensway Drive, Suite 100, Ottawa ON K6A 2T0
 T: 613-733-6322 Email: kevin.thomas@exp.com
 * ALL EXHAUST VENT LOCATION TO BE VERIFIED AND COORDINATED WITH MECHANICAL ENGINEER.

ARCHITECTES / Architect
NEUF architecte(s)
 630, boul. René-Lévesque O, 32e étage, Montréal QC H3B 1S6
 T: 514-847-1117 NEUFarchitecte.com

SCEAU / Seal



BRIGIL
 87 Lisée Blvd, Bureau 207, 3e ét.
 T: 613-243-7387 Email: j.lavoie@brigil.com www.brigil.com

OUVRAGE / Project
PETRIE'S LANDING I - TOWER 4

EMPLACEMENT / Location
ORLEANS, ON NO PROJET No. **12190.00**

NO	RÉVISION	DATE (aa-mm-jj)
1	For Coordination	2019-10-16
2	For Coordination	2019-11-06
3	30% ISSUE	2020-03-31
4	40% ISSUE	2020-04-30
5	For SPA Review Approval	2021-06-04
6	ISSUED FOR PERMITAL REVIEW - ARCHITECT	2021-06-03
7	ISSUED FOR PERMITAL REVIEW - ARCHITECT	2021-09-10
8	ISSUED FOR SPA REVIEW	2021-12-10
9	ISSUED FOR BRIGIL REVIEW/COMMENTS	2021-11-01
10	For Approval SPA Review	2021-12-10
11	90% DRYWALL PERMIT	2021-12-01
12	ISSUED FOR PERMIT	2021-12-15
13	For Approval SPA Review	2022-01-08

DESSINÉ PAR / Drawn by **MU/RR** VÉRIFIÉ PAR / Checked by **MU**

DATE (aa-mm-jj) / DATE (aa-mm-jj) **10/15/2019** ÉCHELLE / Scale **As Indicated**

TITRE DU DESSIN / Drawing Title **NORTH ELEVATION**

ELEVATION - NORTH
 1:100

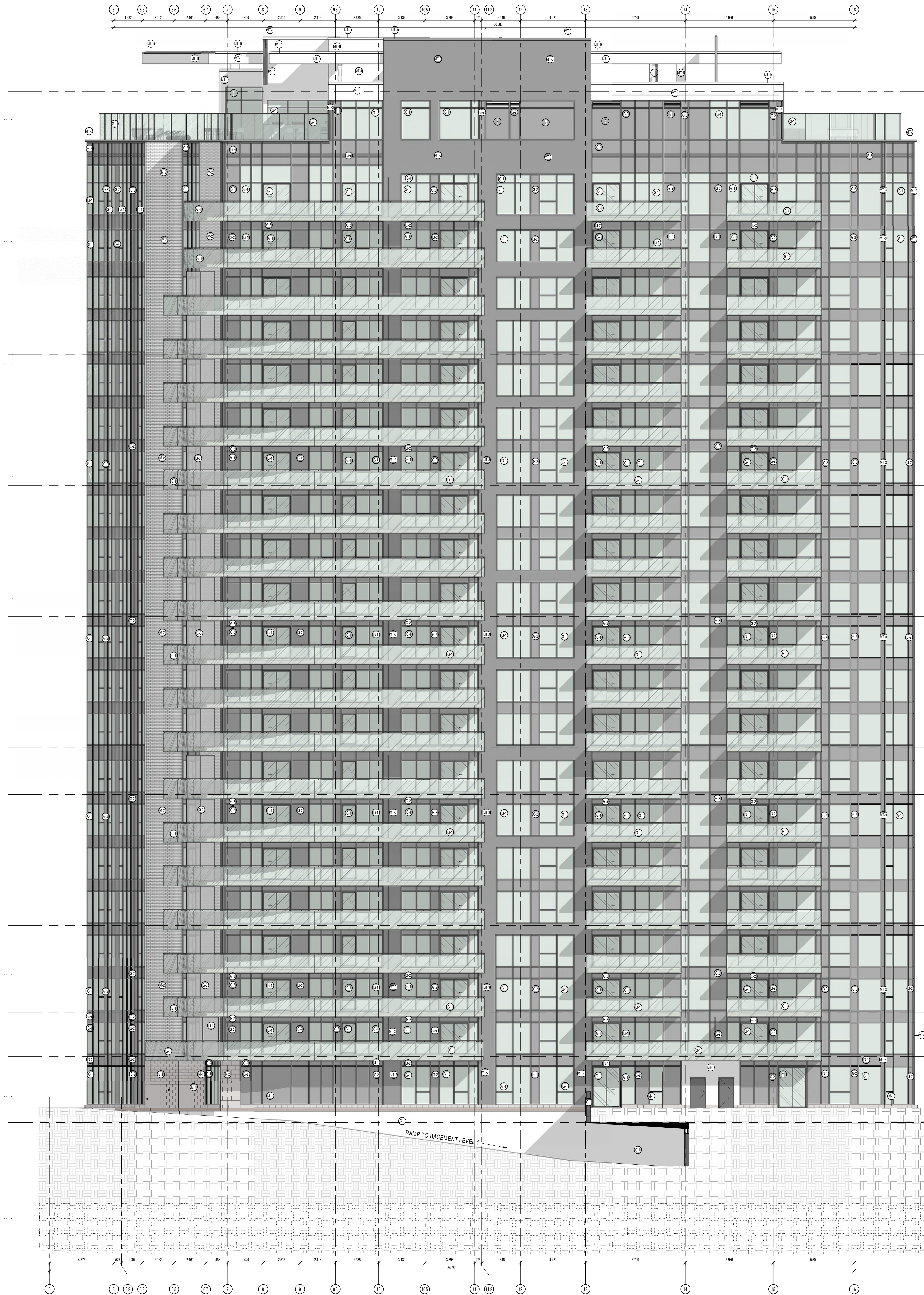
REVISION / Revision **13** NO. DESSIN / Drawing Number **A401**

C:\Fichiers Revit\Locaux\PLT_12190_AFC_F20_r00dd.rvt

G. Wildman

GERALDINE WILDMAN
ACTING MANAGER, DEVELOPMENT REVIEW EAST
PLANNING, REAL ESTATE & ECONOMIC DEVELOPMENT
DEPARTMENT, CITY OF OTTAWA

APPROVED
By Geraldine Wildman at 2:36 pm, Nov 10, 2022



173 111
MAX. BUILDING HEIGHT (128.45)

170 064
HIGH ROOF

169 143
ROOF

165 843
22nd FLOOR AMENITIES

164 193
LOWER POOL SLAB

159 303
21st FLOOR (PENTHOUSE)

157 422
20th FLOOR (PENTHOUSE)

154 220
19th FLOOR

151 220
18th FLOOR

148 280
17th FLOOR

145 310
16th FLOOR

142 340
15th FLOOR

139 370
14th FLOOR

136 400
13th FLOOR

133 430
12th FLOOR

130 460
11th FLOOR

127 490
10th FLOOR

124 520
9th FLOOR

121 320
8th FLOOR

118 350
7th FLOOR

115 380
6th FLOOR

112 410
5th FLOOR

109 440
4th FLOOR

106 470
3rd FLOOR

103 500
2nd FLOOR

100 000
GROUND FLOOR (54.34)

98 000
GARAGE ROOF SLAB (54.34)

96 050
BASEMENT #1 (51.39)

93 050
BASEMENT #2 (48.35)

90 050
BASEMENT #3 (45.39)

100 000
RAMP TO BASEMENT LEVEL

SOIL LEGEND

SOIL

FINISHED GRADE

MATERIALS LEGEND

EXP. CONCRETE

G1 GLASS - TYPE 1 (CLEAR)

G2 SPANDREL GLASS - TYPE 2 (CHARCOAL CERAMIC FRIT CS-0004)

G3 PRIVACY SCREENS - PINKLEAD TEXTURED

M1 MASONRY VENEER - TYPE 1 (STONE SHOULDER, COLOUR PEARL WHITE, SAFETY FIBRE AND BELL SHAFTS/SEE STONE COURSING)

M2 MASONRY VENEER - TYPE 1 (BRICK SHOULDER, BU BRICK SMOOTH, COLOUR PEARL WHITE, JAMBO METRIC 200x60x90mm)

M3 ALUMINUM - TYPE 1 (WHITE - STANDARD SERIES - DURANAR XL RAL 9016)

M4 ALUMINUM - TYPE 2 (CAMBRIDGE WHITE - VIGWEST - AD-300SR)

M5 ALUMINUM - TYPE 3 (CHARCOAL - 780)

ABBREVIATION/SYMBOL LEGEND

C.J. CONTROL JOINT (SEALANT COLOUR TO MATCH ADJACENT VENEER)

S.1. PRIMER & PAINTED GLOSS WHITE, COLOUR TO MATCH ADJACENT VENEER

S.2. PRIMER & PAINTED SHELF ANGLE COLOUR TO MATCH ADJACENT VENEER

S.3. PRIMER & PAINTED SUPPORTS SHELF ANGLE COLOUR TO MATCH ADJACENT VENEER

S.4. SUPPORT STRUCTURE (OPENINGS OVER 300mm) - STRUCTURAL STEEL, RISERS AND SHELF ANGLE ABOVE WINDOW UNIT. SEE STRUCTURAL ENGINEER FOR TYPES, SPACING, DIMENSIONS, ANCHORAGE, LOCATIONS, ETC.

S.E. SINGLE EXHAUST VENT*

D.E. DOUBLE EXHAUST VENT*

T.E. TRIPLE EXHAUST VENT*

C.E. CHIMNEY EXHAUST VENT*

* ALL EXHAUST VENT LOCATIONS TO BE VERIFIED AND COORDINATED WITH MECHANICAL ENGINEER

REFER TO A-802 FOR BRICK COURSING DETAILS. FOR OTHER BRICK SIZES AND TYPES, COURSING MUST BE ADAPTED TO THE STONE COURSING AND ROUGH OPENINGS AS INDICATED IN THESE DRAWINGS.

STRUCTURE Structural
Loroux & Cyr
590 boul. Duval Est, Bureau 105, Montreal QC H3L 3R9
T: 438-381-7772 Email: gjenoux@loroux-cyr.com

MECANIQUE/ELECTRIQUE Mechanical/Electrical
Goodkey, Weedmark & Associates Ltd.
1888 Woodbine Drive, Ottawa ON K2C 3P8
T: 613-727-5111 Email: mason@goodkey.com

ARCHITECTURE DE PAYSAGE Landscape Architect
Paterson Group
14 Colborne Street South, Ottawa ON K2E 7J6
T: 613-228-7381 (253) Email: Callisto@patersongroup.ca

GEOTECHNIQUE Geotechnical
Levetek Consultants Inc.
8171 Woodbine Ave., Unit 100, Markham ON L3R 9V3
T: 613-826-0518 Email: revish@levetek.com

CIVIL CIVIL
exp Services Inc.
2655 Queenwyve Drive, Suite 100, Ottawa ON K0A 2T0
T: 613-733-6332 Email: lreese@exp.com
jason.fitzpatrick@exp.com

ARCHITECTES Architect
NEUF architecte(s)
830, boul. René-Lévesque O., 32e étage, Montreal QC H3B 1S6
T: 514-847-1117 Email: info@neufarchitecte.com

SCEAU / Seal

OUVRAGE Project
PETRIE'S LANDING I - TOWER 4

EMPLACEMENT Location
ORLEANS, ON NO PROJET No. **12190.00**

NO REVISION DATE (aa-mm-jj)

1. Fix Coordination 2018-10-16

2. 30% ISSUE 2018-09-31

3. 40% ISSUE 2018-09-30

4. 50% ISSUE 2018-09-30

5. Fix SPA Review Approval 2021-06-04

6. ISSUED FOR PERMIT REVIEW - ARCHITECT 2021-06-03

7. 60% ISSUE 2021-09-10

8. Issue for SPA Review 2021-12-10

9. ISSUED FOR BRIGIL REVIEW ONLY 2021-11-01

10. Fix Approval SPA Review 2021-12-10

11. 80% DRAFT ISSUE 2021-10-01

12. ISSUED FOR PERMIT 2021-10-15

13. Fix Approval SPA Review 2022-01-08

DESSINÉ PAR Drawn by **MU/RR** VÉRIFIÉ PAR Checked by **MU**

DATE (aa-mm-jj) 10/15/2019 ÉCHELLE Scale **As**

TITRE DU DESSIN Drawing Title **EAST ELEVATION** indicated

REVISION/ Revision NO. DESSIN/ Draw Number **13 A402**

ELEVATION - EAST
1/100

NOTES GÉNÉRALES General Notes

1. Ces documents d'architecture sont la propriété exclusive de NEUF architecte(s) et ne peuvent être utilisés, reproduits ou copiés sans autorisation écrite préalable. / These architectural documents are the exclusive property of NEUF architecte(s) and cannot be used, copied or reproduced without written prior authorization.

2. Les dimensions apparaissant sur ces documents doivent être vérifiées par l'entrepreneur avant le début des travaux. / All dimensions which appear on the documents must be verify by the contractor before to start the work.

3. Veuillez aviser l'architecte de toute dimension erreur et/ou changements sur ces documents et/ou sur les autres professionnels. / The architect must be notified of all errors, omissions and discrepancies between these documents and those of the others professionals.

4. Les dimensions sur ces documents doivent être lues et non mesurées. / The dimensions on these documents must be read and not measured.

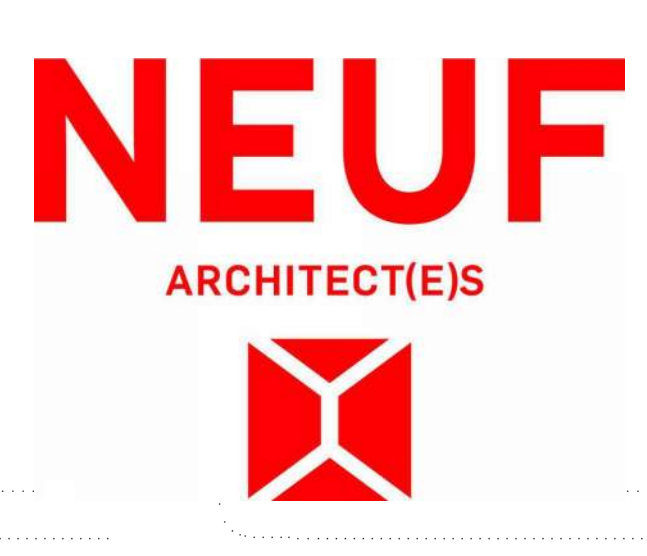
ARCHITECTURE DE PAYSAGE Landscape Architect
Paterson Group
14 Colborne Street South, Ottawa ON K2E 7J6
T: 613-228-7381 (253) Email: Callisto@patersongroup.ca

GEOTECHNIQUE Geotechnical
Levetek Consultants Inc.
8171 Woodbine Ave., Unit 100, Markham ON L3R 9V3
T: 613-826-0518 Email: revish@levetek.com

CIVIL CIVIL
exp Services Inc.
2655 Queenwyve Drive, Suite 100, Ottawa ON K0A 2T0
T: 613-733-6332 Email: lreese@exp.com
jason.fitzpatrick@exp.com

ARCHITECTES Architect
NEUF architecte(s)
830, boul. René-Lévesque O., 32e étage, Montreal QC H3B 1S6
T: 514-847-1117 Email: info@neufarchitecte.com

SCEAU / Seal



OUVRAGE Project
PETRIE'S LANDING I - TOWER 4

EMPLACEMENT Location
ORLEANS, ON NO PROJET No. **12190.00**

NO REVISION DATE (aa-mm-jj)

1. Fix Coordination 2018-10-16

2. 30% ISSUE 2018-09-31

3. 40% ISSUE 2018-09-30

4. 50% ISSUE 2018-09-30

5. Fix SPA Review Approval 2021-06-04

6. ISSUED FOR PERMIT REVIEW - ARCHITECT 2021-06-03

7. 60% ISSUE 2021-09-10

8. Issue for SPA Review 2021-12-10

9. ISSUED FOR BRIGIL REVIEW ONLY 2021-11-01

10. Fix Approval SPA Review 2021-12-10

11. 80% DRAFT ISSUE 2021-10-01

12. ISSUED FOR PERMIT 2021-10-15

13. Fix Approval SPA Review 2022-01-08

DESSINÉ PAR Drawn by **MU/RR** VÉRIFIÉ PAR Checked by **MU**

DATE (aa-mm-jj) 10/15/2019 ÉCHELLE Scale **As**

TITRE DU DESSIN Drawing Title **EAST ELEVATION** indicated

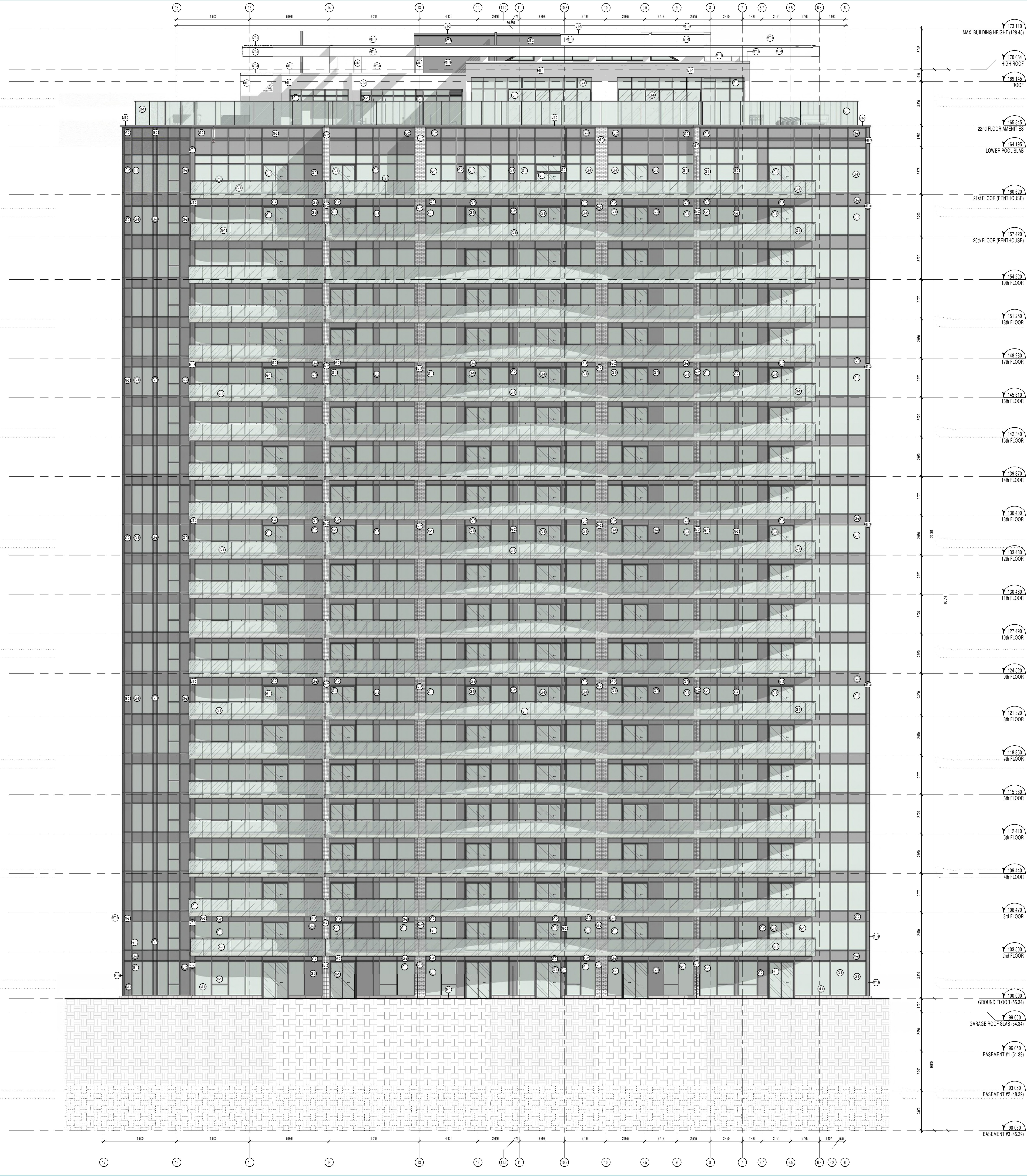
REVISION/ Revision NO. DESSIN/ Draw Number **13 A402**

C:\Fichiers Revit\Local\PLT_12190_ARC_R20_rroad.rvt

G. Wildman

GERALDINE WILDMAN
 ACTING MANAGER, DEVELOPMENT REVIEW EAST
 PLANNING, REAL ESTATE & ECONOMIC DEVELOPMENT
 DEPARTMENT, CITY OF OTTAWA

APPROVED
 By Geraldine Wildman at 2:38 pm, Nov 10, 2022



SOIL LEGEND

SOIL

FINISHED GRADE

MATERIALS LEGEND

C-1 EXPOSED CONCRETE

G-1 GLASS - TYPE 1 (CLEAR)

G-2 SPANDREL GLASS - TYPE 2 (HARDOX CERAMIC FRIT CS-0004)

G-3 PRIVACY SCREENS - FINISH TEXTURED

M-1 MASONRY VENEER - TYPE 1 (STONE, SHALODGE, COLOUR: PEARL, WHITE - TAPESTRY AND BEVEL) 300x150x75mm SEE STONE COURSING

M-2 MASONRY VENEER - TYPE 3 (BRICK, SHALODGE - BU BRICK SMOOTH, COLOUR: PEARL, WHITE, 100x75x75mm)

M-3 ALUMINUM - TYPE 1 (WHITE - STANDARD SERIES - DURANAL XL 904)

M-4 ALUMINUM - TYPE 2 (CAMBRIDGE WHITE - VORWEST - AD-3005R)

M-5 ALUMINUM - TYPE 3 (CHARCOAL - TB0)

ABBREVIATION/SYMBOL LEGEND

C.J. CONTROL JOINT (BEALANT COLOUR TO MATCH ADJACENT VENEER)

S.L. PRIMED AND PAINTED SLOPE UNITS, COLOUR TO MATCH ADJACENT VENEER

S.S. PRIMED & PAINTED SUSPENDED SHELF ANGLE COLOUR TO MATCH ADJACENT VENEER

S.S.1. PRIMED & PAINTED SUSPENDED SHELF ANGLE COLOUR TO MATCH ADJACENT VENEER

S.S.2. SLOPE STRUCTURE, OPENINGS OVER ROOFS, STRUCTURAL STEEL AND SHELF ANGLE AND/OR BRIDGE GIRL (SEE STRUCTURAL ENGINEER FOR TYPES, SPACING, DIMENSIONS, ANCHORAGE, LOCATIONS, ETC.)

□ SINGLE EXHAUST VENT

□ DOUBLE EXHAUST VENT

□ TRIPLE EXHAUST VENT

□ QUADRUPLE EXHAUST VENT

* ALL EXHAUST VENT LOCATION TO BE VERIFIED AND COORDINATED WITH MECHANICAL ENGINEER

REFER TO A-302 FOR BRICK COURSING DETAILS. FOR OTHER BRICK SIZES AND TYPES, COURSING MUST BE ADAPTED TO THE STONE COURSING AND ROUGH OPENINGS AS INDICATED IN THESE DRAWINGS.

NOTES GÉNÉRALES - General Notes

1. Ces documents d'architecture sont la propriété exclusive de NEUF architectes et ne peuvent être utilisés, reproduits ou copiés sans autorisation écrite préalable. / These architectural documents are the exclusive property of NEUF architects and cannot be used, copied or reproduced without written consent.

2. Les dimensions apparaissant aux documents doivent être vérifiées par l'entrepreneur avant le début des travaux. / All dimensions which appear on the documents must be verified by the contractor before to start the work.

3. Veuillez aviser l'architecte de toute dimension erronée ou changements entre ces documents et ceux des autres professionnels. / The architect must be notified of all errors, omissions and discrepancies between these documents and those of the others professionals.

4. Les dimensions sur ces documents doivent être lues et non mesurées. / The dimensions on these documents must be read and not measured.

STRUCTURE - Structural
Loroux & Cyr
 500 boul. Ouellet, Bureau 105, Montréal QC H3L 3R9
 T: 438-381-7772 Courriel: gjenoux@loroux-cyr.com

MÉCANIQUE-ELECTRIQUE - Mechanical/Electrical
Goodkey, Weedmark & Associates Ltd.
 1888 Woodward Drive, Ottawa ON K2C 3P8
 T: 613-727-9111 Email: mason@goodkey.com

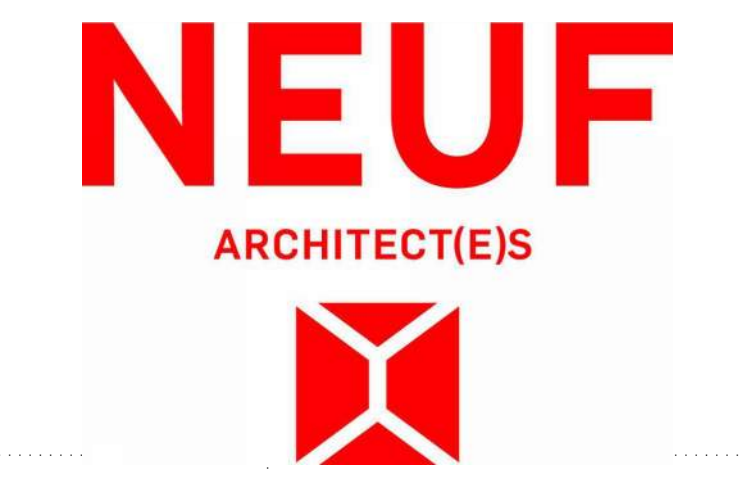
ARCHITECTURE DE PAYSAGE - Landscape Architect
Paterson Group
 146 Colborne Street South, Ottawa ON K2E 7J6
 1888 Woodward Drive, Ottawa ON K2C 3P8
 T: 613-228-7311 Email: carlos@patersongroup.ca

GÉOTECHNIQUE - Geotechnical
Levetek Consultants Inc.
 8171 Highway 7, Ottawa ON K2C 2K3
 T: 613-826-0518 Email: revetka@larocquevetek.com

CIVIL - Civil
exp Services Inc.
 2655 Queensway Drive, Suite 100, Ottawa ON K0A 2T0
 T: 613-733-6322 Email: kevin.thomas@exp.com
 jason.fitzpatrick@exp.com

ARCHITECTES - Architect
NEUF architect(e)s
 630, boul. René-Lévesque O, 32e étage, Montréal QC H3B 1S4
 T: 514-847-1117 NEUFarchitectes.com

SCEAU / Seal



OUVRAGE - Project

PETRIE'S LANDING I - TOWER 4

EMPLACEMENT - Location
 ORLEANS, ON

NO PROJET No.
 12190.00

NO	RÉVISION	DATE (aa-mm-jj)
1	Fix Coordination	2018-10-16
2	Fix Coordination	2018-11-06
3	30% ISSUE	2020-03-31
4	40% ISSUE	2020-04-30
5	Fix SPA Review Approval	2021-05-04
6	ISSUED FOR PERMITAL REVIEW - ARCHITECT	2021-06-03
7	ISSUED FOR PERMITAL REVIEW - ARCHITECT	2021-09-10
8	ISSUED FOR SPA REVIEW	2021-12-10
9	ISSUED FOR BRIGIL REVIEW/COM	2021-11-01
10	Fix Approval SPA Review	2021-12-10
11	90% DRAFT ISSUE	2021-10-01
12	ISSUED FOR PERMIT	2021-12-15
13	Fix Approval SPA Review	2022-01-08

DESSINÉ PAR - Drawn by
 MU/RR

VERIFIÉ PAR - Checked by
 MU

DATE (aa-mm-jj)
 10/15/2019

ÉCHELLE - Scale
 As indicated

TITRE DU DESSIN - Drawing Title
 WEST ELEVATION