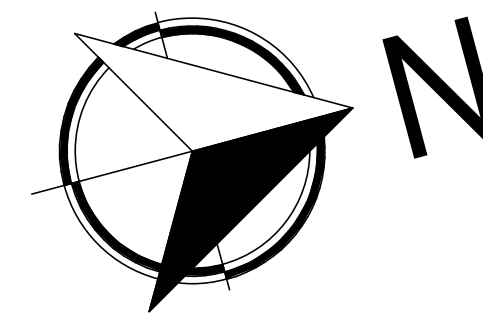


G. Wildman

GERALDINE WILDMAN
ACTING MANAGER, DEVELOPMENT REVIEW EAST
PLANNING, REAL ESTATE & ECONOMIC DEVELOPMENT
DEPARTMENT, CITY OF OTTAWA

APPROVED

By Geraldine Wildman at 2:35 pm, Nov 10, 2022



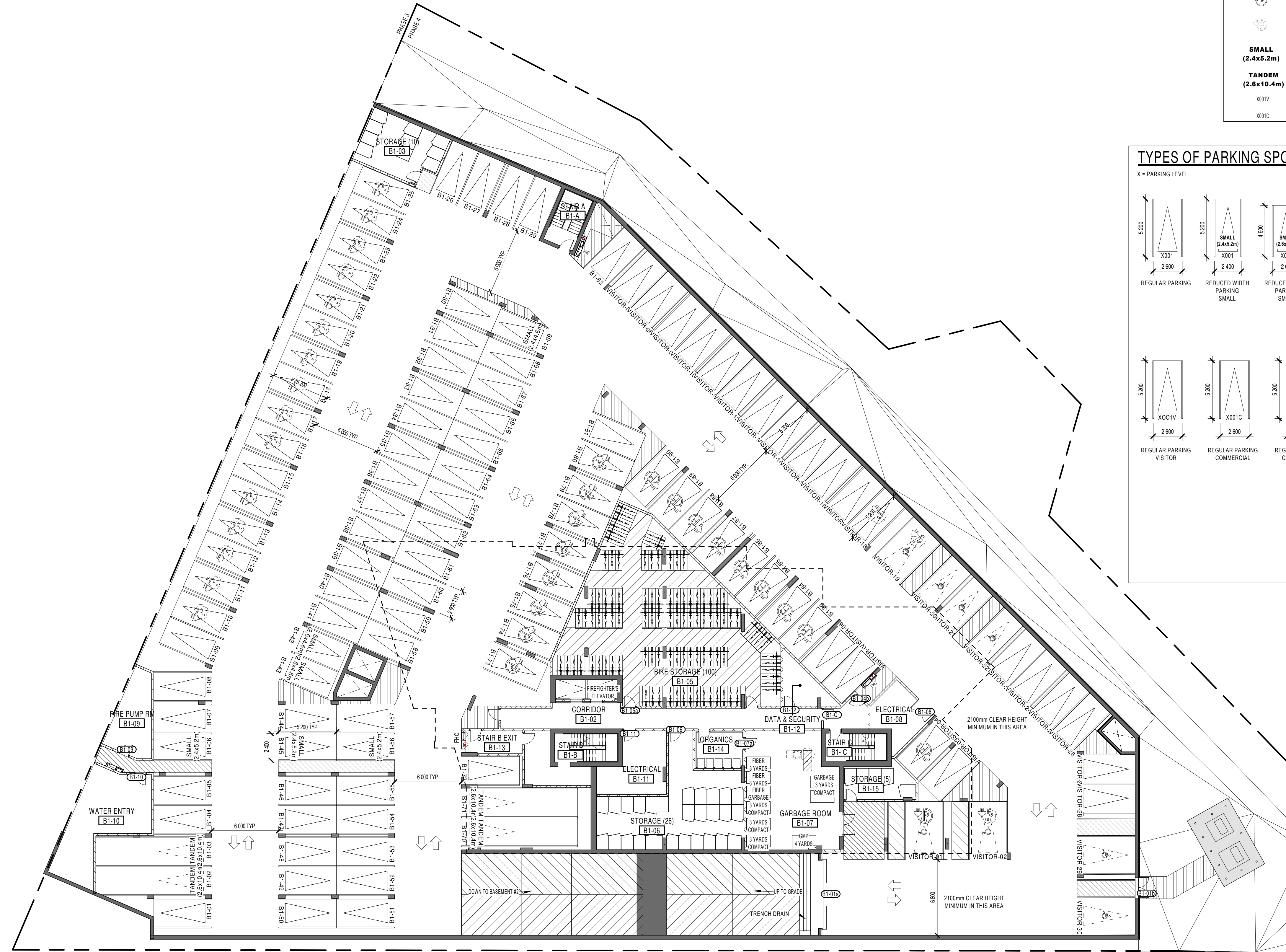
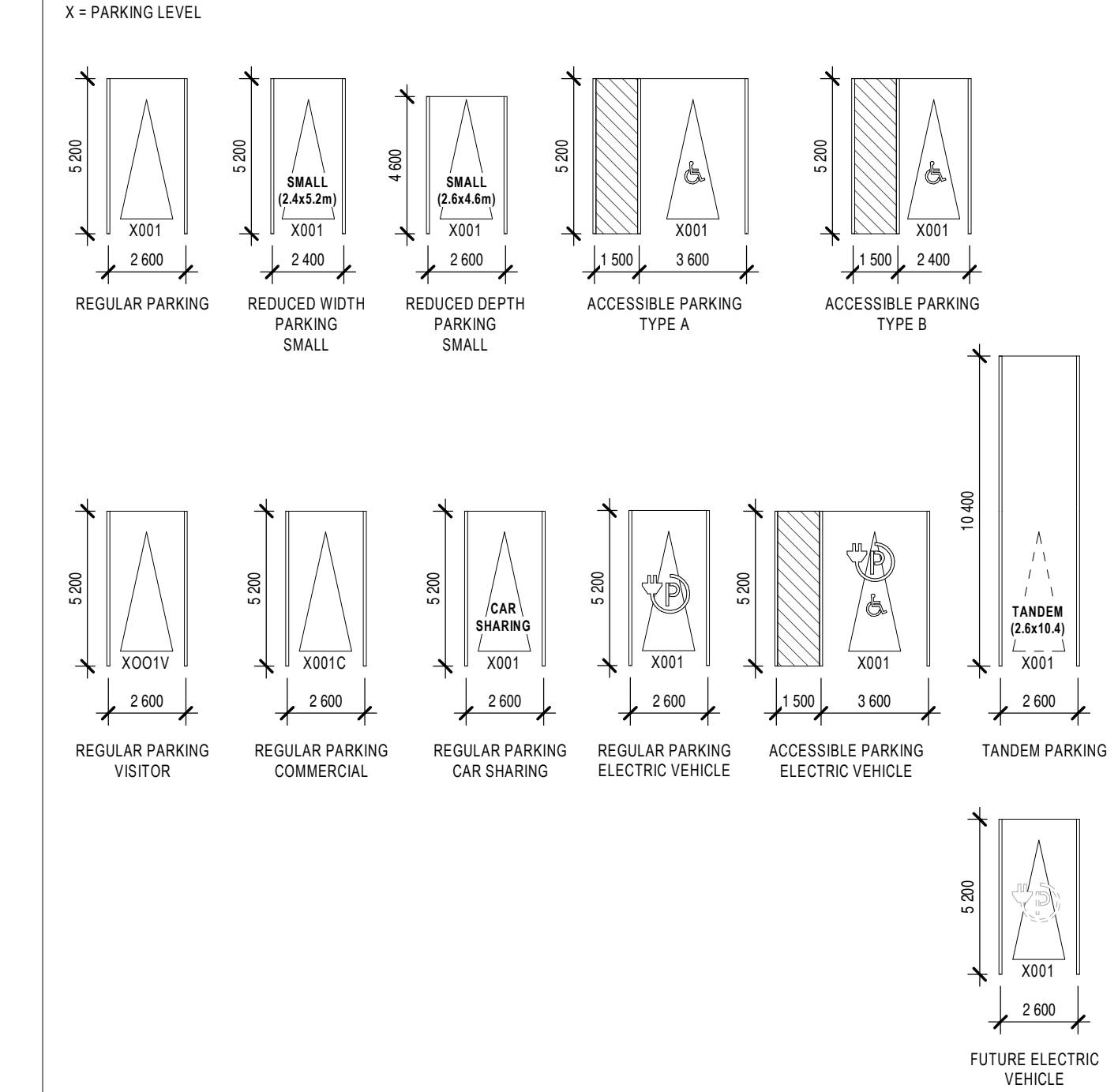
PARKING LEGEND

	PEDESTRIAN AREA
	2100mm MIN VERTICAL CLEARANCE AREA
	VEHICLE ACCESS AISLE
	VEHICLE ACCESS RAMP
L.P.	LOW POINT
H.P.	HIGH POINT
FD	FLOOR DRAIN
	DRAINING SLOPE
	SPRINKLERS
T1 VISITOR	TOWER 3 VISITOR PARKING
T4 VISITOR	TOWER 4 (FUTURE PHASE) VISITOR PARKING
	UNIVERSAL ACCESSIBILITY PARKING
	ELECTRICAL VEHICLE CHARGING STATION
	FUTURE ELECTRICAL VEHICLE PARKING
	SMALL CAR PARKING DESIGNATION STALL PAINTING WITH ADDITIONAL WALL MOUNTED SIGNAGE
SMALL (2.4x5.2m)	
TANDEM (2.6x10.4m)	
X001V	VISITOR PARKING
X001C	COMMERCIAL PARKING

A200 - TABLE - PARKING SPACES

DESCRIPTION	QUANTITY
SMALL (2.4x5.2m)	76
SMALL (2.6x4.6m)	2
TANDEM (2.6x10.4m)	2
BASEMENT #3 (45.39) 79	
SMALL (2.4x5.2m)	5
SMALL (2.4x4.6m)	119
SMALL (2.4x5.2m)	3
SMALL (2.6x4.6m)	2
TANDEM (2.6x10.4m)	2
BASEMENT - LEVEL 2: 126	
3400mmx5200mm plus aisle HANDICAP	5
3690mmx5200mm HANDICAP	3
SMALL (2.4x5.2m)	103
SMALL (2.4x5.2m)	3
SMALL (2.6x4.6m)	4
TANDEM (2.6x10.4m)	4
BASEMENT - LEVEL 1: 120	
GENERAL TOTAL: 325	

TYPES OF PARKING SPOTS



NOTES GÉNÉRALES / General Notes

- Ces documents d'architecture sont la propriété exclusive de NEUF architecte et ne peuvent être utilisés, reproduits ou copiés sans autorisation écrite préalable. / These architectural documents are the exclusive property of NEUF architecte and cannot be used, copied or reproduced without written pre-authorization.
- Les dimensions apparaissant sur ces documents doivent être vérifiées par l'entrepreneur avant le début des travaux. / All dimensions which appear on the documents must be verified by the contractor before to start the work.
- Veillez aviser l'architecte de toute dimension erreur et/ou divergence entre ces documents et ceux des autres professionnels. / The architect must be notified of all errors, omissions and discrepancies between these documents and those of the other professionals.
- Les dimensions sur ces documents doivent être lues et non mesurées. / The dimensions on these documents must be read and not measured.

STRUCTURE / Structure
Leroux+Cyr
500 boul. Gouin Est. bureau 306, Montréal QC H3L 3R9
T: 438-494-3652 Email: leroux@lerouxcyr.com

MÉCANIQUE/ÉLECTRIQUE / Mechanical/Electrical
Goodkey, Weedmark & Associates Ltd.
158 Woodview Drive, Ottawa ON K2C 3P8
T: 613-727-5111 Email: rossmc@geak.com

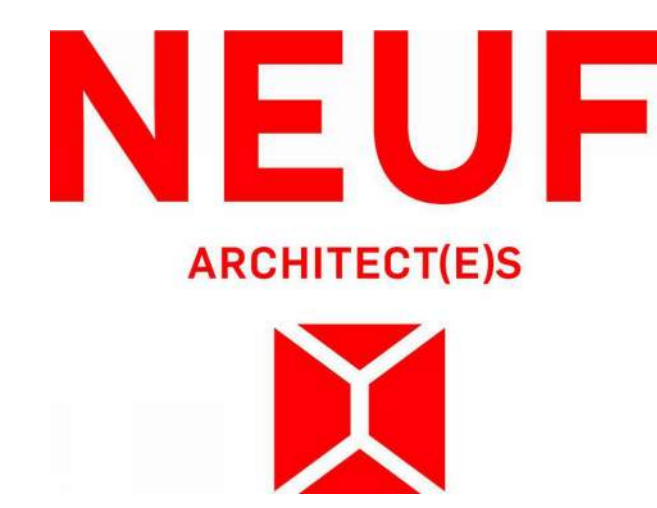
GÉOTECHNIQUE / Geotechnical
Paterson Group
154 Colonnade Road South, Ottawa ON K2E 7J5
T: 613-298-7381 (283) Email: Carlos@patersongroup.ca

ARCHITECTURE DE PAYSAGE / Landscape Architecture
Levstek Consultants Inc.
5871 Hugh Crofton, Ottawa ON K0A 5W0
T: 613-826-0518 Email: levstek@arocullevstek.com

CIVIL / Civil
exp Services Inc.
2850 Queensway Drive, Suite 100, Ottawa ON K0A 2T0
T: 613-735-0332 Email: bruce.thomas@exp.com
jason.fitzpatrick@exp.com

ARCHITECTES / Architect
NEUF architecte(s)
630, boul. René-Lévesque O. 52e étage, Montréal QC H3B 1S6
T: 514 847 1117 NEUFArchitectes.com

SCEAU / Seal



CLIENT / Client
BRIGIL
99 Lois Street, Gatineau QC J8Y 3R7
T: 819-243-7392 Email: JL.Rivard@brigil.com; mchenier@brigil.com

OUVRAGE / Project
PETRIE'S LANDING I - TOWER 4
ORLEANS, ON NO PROJET No. 12190.00

NO	RÉVISION	DATE (aa-mm-ii)
1	For SPA Review Approval	2021-06-04
2	ISSUED FOR INTERNAL REVIEW - ARCHITECT	2021-08-03
3	For Approved SPA Revision	2021-12-10
4	For Approved SPA Revision	2022-01-28

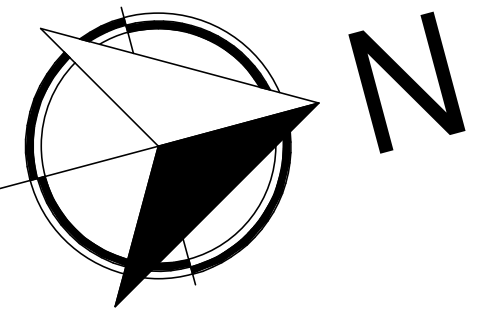
*Preliminary
DO NOT USE FOR
CONSTRUCTION*

DESSINÉ PAR Drawn by: **MU** VÉRIFIÉ PAR Checked by: **FP**
DATE (aa.mm.ii): **06/04/21** ÉCHELLE Scale: **As**
TITRE DU DESSIN Drawing Title: **BASEMENT 1 - TOWER 4**

G. Wildman

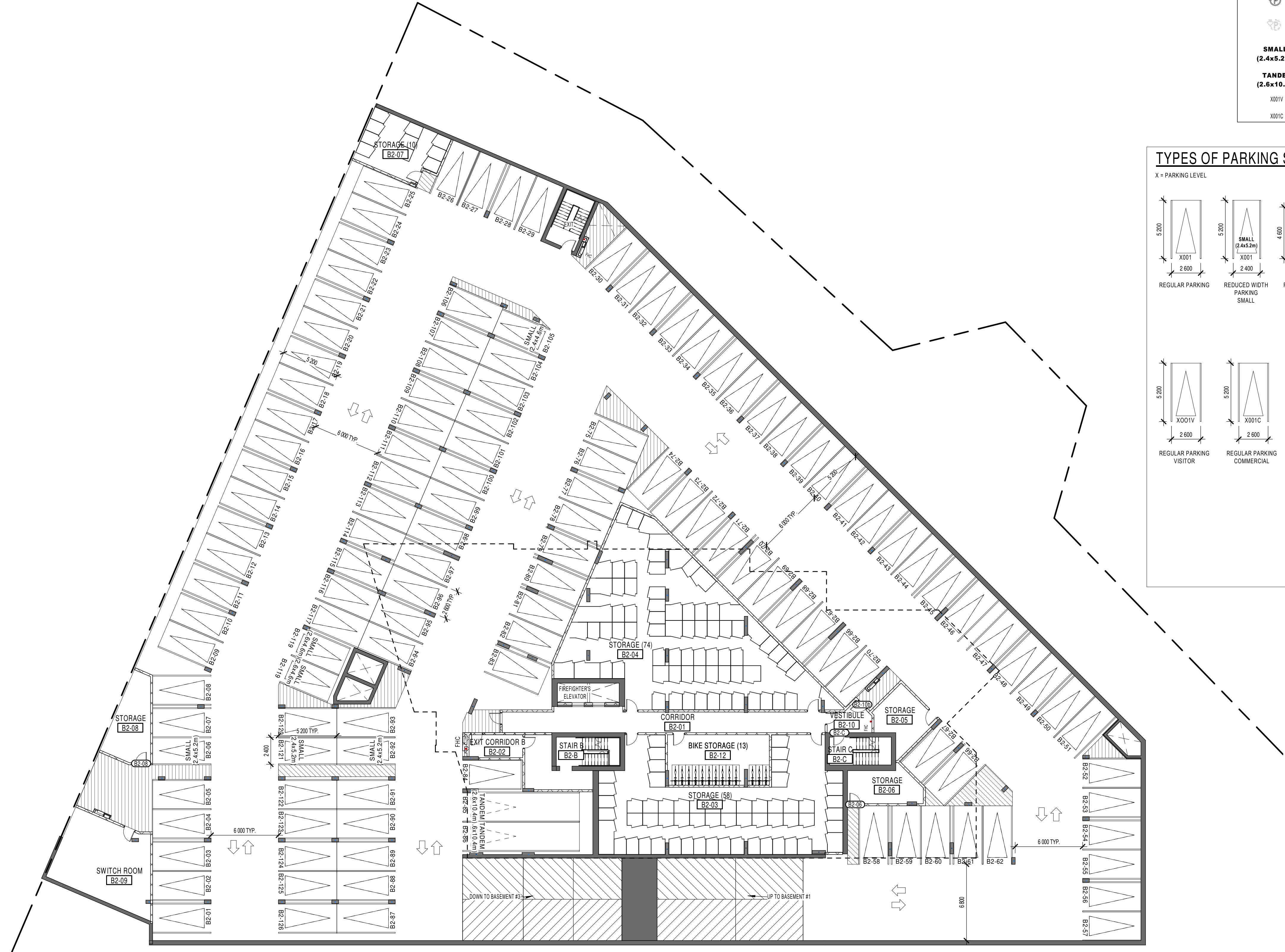
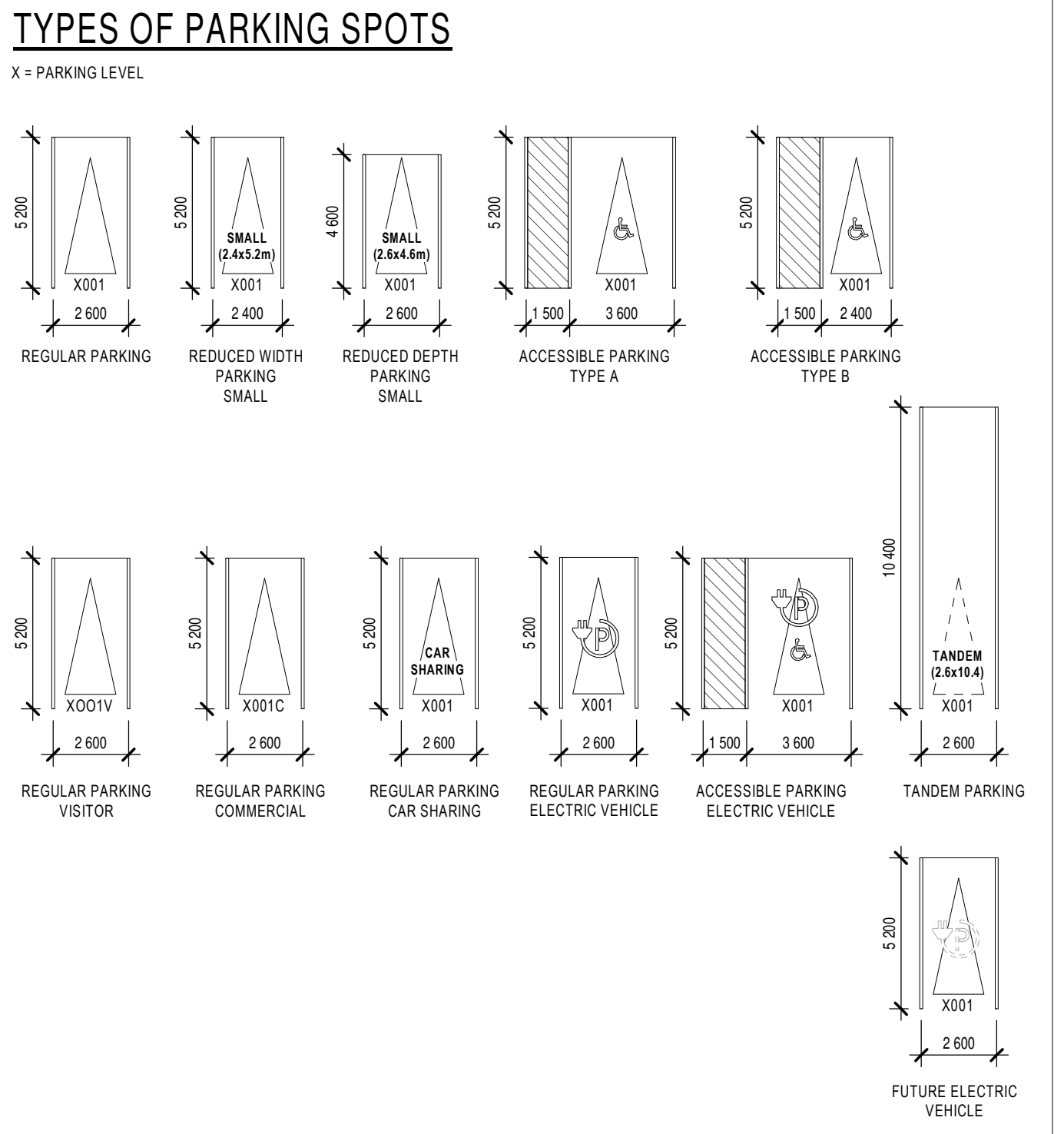
GERALDINE WILDMAN
ACTING MANAGER, DEVELOPMENT REVIEW EAST
PLANNING, REAL ESTATE & ECONOMIC DEVELOPMENT
DEPARTMENT, CITY OF OTTAWA

APPROVED
 By Geraldine Wildman at 2:40 pm, Nov 10, 2022



PARKING LEGEND	
	PEDESTRIAN AREA
	2100mm MIN VERTICAL CLEARANCE AREA
	6m DRIVING AISLE
	VEHICLE ACCESS RAMP
L.P.	LOW POINT
H.P.	HIGH POINT
FD	FLOOR DRAIN
	DRAINING SLOPE
	SPRINKLERS
	COUNTERSLOPE
T3 VISITOR	TOWER 3 VISITOR PARKING
T4 VISITOR	TOWER 4 (FUTURE PHASE) VISITOR PARKING
	UNIVERSAL ACCESSIBILITY PARKING
	ELECTRICAL VEHICLE CHARGING STATION
	FUTURE ELECTRIC VEHICLE PARKING
SMALL (2.4x5.2m)	SMALL CAR PARKING DESIGNATION STALL PAINTING WITH ADDITIONAL WALL MOUNTED SIGNAGE
TANDEM (2.6x10.4m)	TANDEM PARKING
X001V	VISITOR PARKING
X001C	COMMERCIAL PARKING

A200 - TABLE - PARKING SPACES	
DESCRIPTION	
SMALL (2.4x5.2m)	76
SMALL (2.6x4.6m)	119
TANDEM (2.6x10.4m)	2
BASEMENT #3 (45.39) 79	
SMALL (2.4x5.2m)	3
SMALL (2.6x4.6m)	2
TANDEM (2.6x10.4m)	2
BASEMENT - LEVEL 2: 126	
3400mmx5200mm plus aisle HANDICAP	5
3600mmx5000mm HANDICAP	3
SMALL (2.4x5.2m)	103
SMALL (2.4x5.2m)	3
SMALL (2.6x4.6m)	4
TANDEM (2.6x10.4m)	1
BASEMENT - LEVEL 1: 120	
GENERAL TOTAL: 325	



NOTES GÉNÉRALES / General Notes

- Ces documents d'architecture sont la propriété exclusive de NEUF architecte(s) et ne peuvent être utilisés, reproduits ou copiés sans autorisation écrite préalable. / These architectural documents are the exclusive property of NEUF architecte(s) and cannot be used, copied or reproduced without written pre-authorization.
- Les dimensions apparaissant sur ces documents doivent être vérifiées par l'entrepreneur avant le début des travaux. / All dimensions which appear on the documents must be verified by the contractor before to start the work.
- Veuillez aviser l'architecte de toute dimension erreur et/ou divergence entre ces documents et ceux des autres professionnels. / The architect must be notified of all errors, omissions and discrepancies between these documents and those of the others professionals.
- Les dimensions sur ces documents doivent être lues et non mesurées. / The dimensions on these documents must be read and not measured.

STRUCTURE Structure
Leroux+Cyr
 500 boul. Gouin Est, bureau 306, Montréal QC H3L 3R9
 T: 438-484-3652 Email: leroux@lerouxcyr.com

MÉCANIQUE/ÉLECTRIQUE Mechanical/Electrical
Goodkey, Weedmark & Associates Ltd.
 1588 Woodhurst Drive, Ottawa ON K2C 3R8
 T: 613-727-5111 Email: rossmc@gwak.com

GÉOTECHNIQUE Geotechnical
Paterson Group
 154 Colonnade Road South, Ottawa ON K2E 7J5
 T: 613-298-7381 (283) Email: Carlos@patersongroup.ca

ARCHITECTURE DE PAYSAGE Landscape Architecture
Levstek Consultants Inc.
 2971 Hugh Crofton, Ottawa ON K0K 5V0
 T: 613-826-0518 Email: levstek@arocquelevstek.com

CIVIL Civil
exp Services Inc.
 2650 Queensview Drive, Suite 100, Ottawa ON K0A 2T0
 T: 613-725-0332 Email: bruce.thomas@exp.com
 jason.fitzpatrick@exp.com

ARCHITECTES Architect
NEUF architecte(s)
 630, St-Jul, Rensé-Lévesque C. 32e étage, Montréal QC H3B 1S6
 T 514 847 1117 NEUFArchitectes.com

SCEAU / Seal



CLIENT Client
BRIGIL
 99 Lois Street, Gatineau QC J8Y 3R7
 T: 819-243-7392 Email: JL.Rivard@brigil.com; mchenier@brigil.com

OUVRAGE Project
PETRIE'S LANDING I - TOWER 4
 ORLEANS, ON NO PROJET No. 12190.00

NO	RÉVISION	DATE (aa-mm-ii)
1	For SPA Review Approval	2021-06-04
2	ISSUED FOR INTERNAL REVIEW - ARCHITECT	2021-08-03
3	For Approved SPA Revision	2021-12-10
4	For Approved SPA Revision	2022-01-28

Preliminary
 DO NOT USE FOR CONSTRUCTION

DESSINÉ PAR Drawn by
 MU VERIFIÉ PAR Checked
 FP
 DATE (aa.mm.ii) 06/04/21 ÉCHELLE Scale
 As
 TITRE DU DESSIN Drawing Title indicated

BASEMENT 2 - TOWER 4

RÉVISION Revision 4 NO. DESSIN Dwg Number A201.4

NOTES GÉNÉRALES / General Notes

- Ces documents d'architecture sont la propriété exclusive de NEUF architecte(s) et ne peuvent être utilisés, reproduits ou copiés sans autorisation écrite préalable. / These architectural documents are the exclusive property of NEUF architecte(s) and cannot be used, copied or reproduced without written pre-authorization.
- Les dimensions apparaissant sur ces documents doivent être vérifiées par l'entrepreneur avant le début des travaux. / All dimensions which appear on the documents must be verified by the contractor before to start the work.
- Veuillez aviser l'architecte de toute dimension erreur et/ou divergence entre ces documents et ceux des autres professionnels. / The architect must be notified of all errors, omissions and discrepancies between these documents and those of the others professionals.
- Les dimensions sur ces documents doivent être lues et non mesurées. / The dimensions on these documents must be read and not measured.

STRUCTURE / Structure

Leroux+Cyr
500 boul. Gouin Est, bureau 306, Montréal QC H3L 3R9
T: 438-494-3652 Email: leroux@lerouxicyr.com

MÉCANIQUE/ÉLECTRIQUE / Mechanical/Electrical

Goodkey, Weedmark & Associates Ltd.
1588 Woodbry Drive, Ottawa ON K2C 3P6
T: 613-727-5111 Email: rossmc@gwak.com

GÉOTECHNIQUE / Geotechnical

Paterson Group
154 Colonnade Road South, Ottawa ON K2E 7J5
T: 613-226-7381 (283) Email: Carlos@patersongroup.ca

ARCHITECTURE DE PAYSAGE / Landscape Architect

Lestek Consultants Inc.
5917 Hugh Crockett, Ottawa ON K1A 5W4
T: 613-826-0518 Email: rievtek@lestekconsultants.com

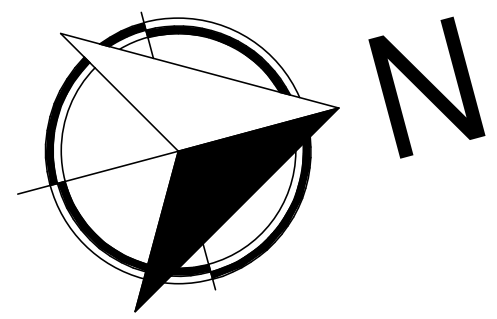
CIVIL / Civil

exp Services Inc.
2650 Queensway Drive, Suite 100, Ottawa ON K1A 2T0
T: 613-735-0332 Email: bruce.thomas@exp.com
jason.fitzpatrick@exp.com

ARCHITECTES / Architect

NEUF architecte(s)
630, St-Jacques, Montréal QC H3B 1S6
T: 514 847 1117 NEUFArchitectes.com

SCEAU / Seal



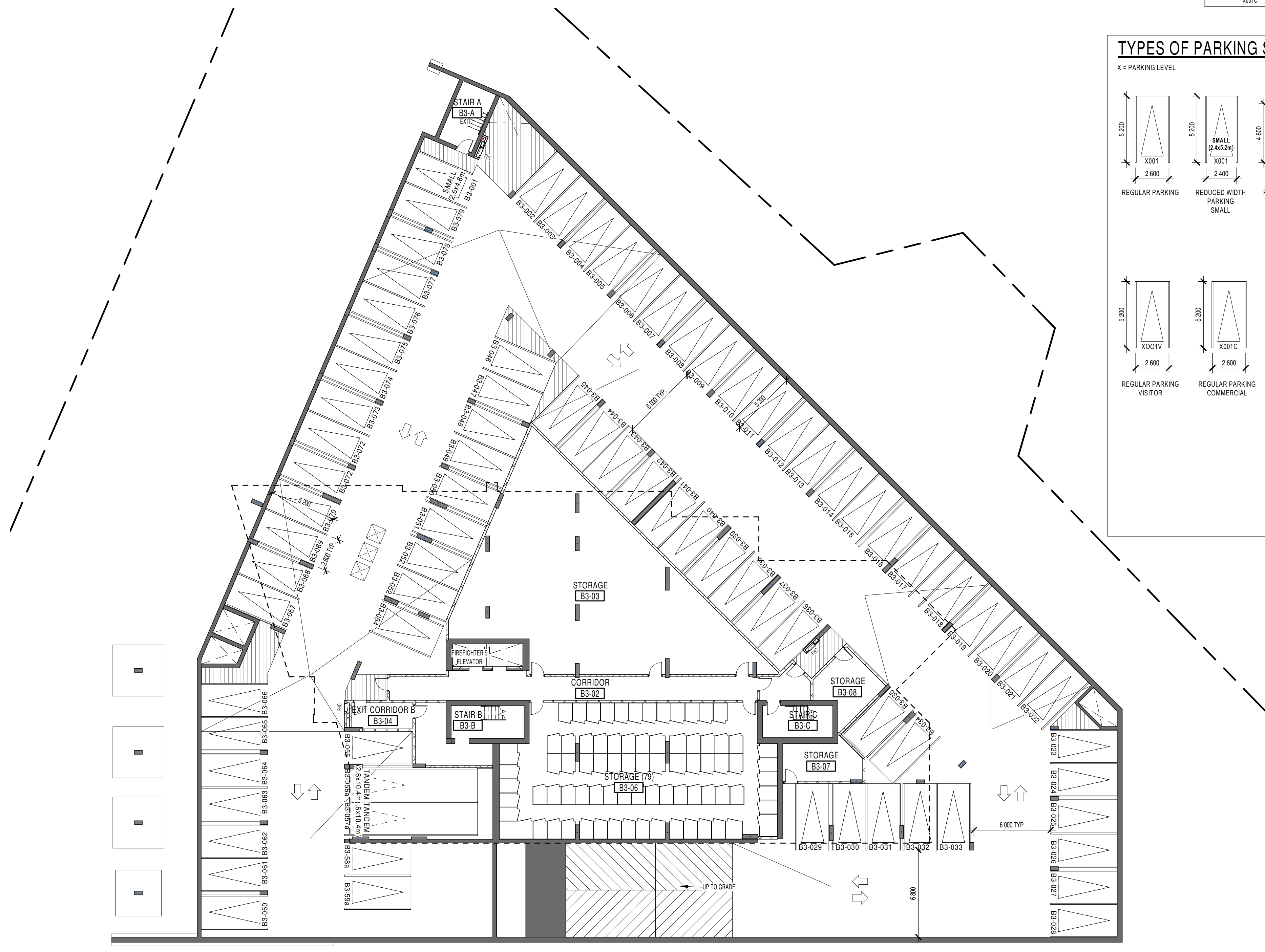
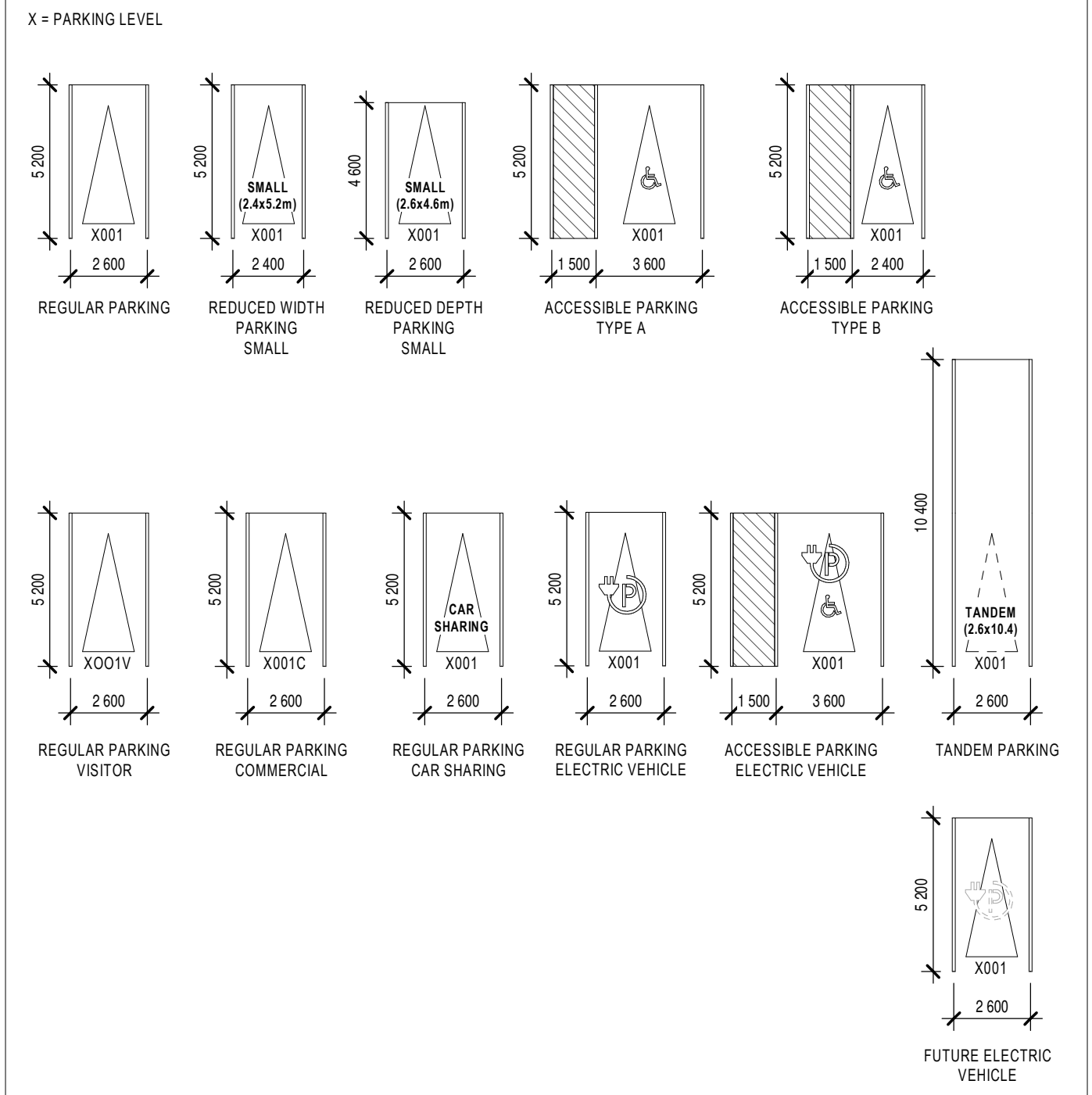
PARKING LEGEND

	PEDESTRIAN AREA
	2100mm MIN VERTICAL CLEARANCE AREA
	6m DRIVING AISLE
	VEHICLE ACCESS RAMP
	LOW POINT
	HIGH POINT
	FLOOR DRAIN
	DRAINING SLOPE
	SPRINKLERS
	COUNTERSLOPE
	TOWER 3 VISITOR PARKING
	TOWER 4 (FUTURE PHASE) VISITOR PARKING
	UNIVERSAL ACCESSIBILITY PARKING
	ELECTRICAL VEHICLE CHARGING STATION
	FUTURE ELECTRICAL VEHICLE PARKING
	SMALL CAR PARKING DESIGNATION STALL PAINTING WITH ADDITIONAL WALL MOUNTED SIGNAGE
SMALL (2.4x5.2m)	
TANDEM (2.6x10.4m)	TANDEM PARKING
	VISITOR PARKING
	COMMERCIAL PARKING

A200 - TABLE - PARKING SPACES

DESCRIPTION	QUANTITY
SMALL (2.4x5.2m)	76
SMALL (2.6x10.4m)	2
TANDEM (2.6x10.4m)	2
BASEMENT #3 (45.39) 79	
SMALL (2.4x5.2m)	5
SMALL (2.4x5.2m)	119
SMALL (2.4x5.2m)	3
SMALL (2.6x10.4m)	2
TANDEM (2.6x10.4m)	2
BASEMENT - LEVEL 2: 126	
3400mmx5200mm plus aisle HANDICAP	5
3690mmx5200mm HANDICAP	3
SMALL (2.4x5.2m)	103
SMALL (2.4x5.2m)	3
SMALL (2.6x10.4m)	4
TANDEM (2.6x10.4m)	4
BASEMENT - LEVEL 1: 120	
GENERAL TOTAL: 325	

TYPES OF PARKING SPOTS



CLIENT / Client

BRIGIL
99 Lois Street, Gatineau QC J8Y 3R7
T: 819-243-7392 Email: JL.Rivard@brigil.com; mchenier@brigil.com

OUVRAGE / Project

PETRIE'S LANDING I - TOWER 4

EMPLACEMENT / Location NO PROJET / No.
ORLEANS, ON 12190.00

NO RÉVISION / DATE (aa-mm-ii)

1	For SPA Review Approval	2021-06-04
2	ISSUED FOR INTERNAL REVIEW - ARCHITECT	2021-08-03
3	For Approved SPA Revision	2021-12-10
4	For Approved SPA Revision	2022-01-28

Preliminary
DO NOT USE FOR
CONSTRUCTION

DESSIN PAR / Drawn by

MU

VÉRIFIÉ PAR / Checked

FP

DATE (aa.mm.ii)

06/04/21

ÉCHELLE / Scale

As

TITRE DU DESSIN / Drawing Title

indicated

BASEMENT 3 - TOWER 4

RÉVISION / Revision

4

NO. DESSIN / Dwg Number

A200.4