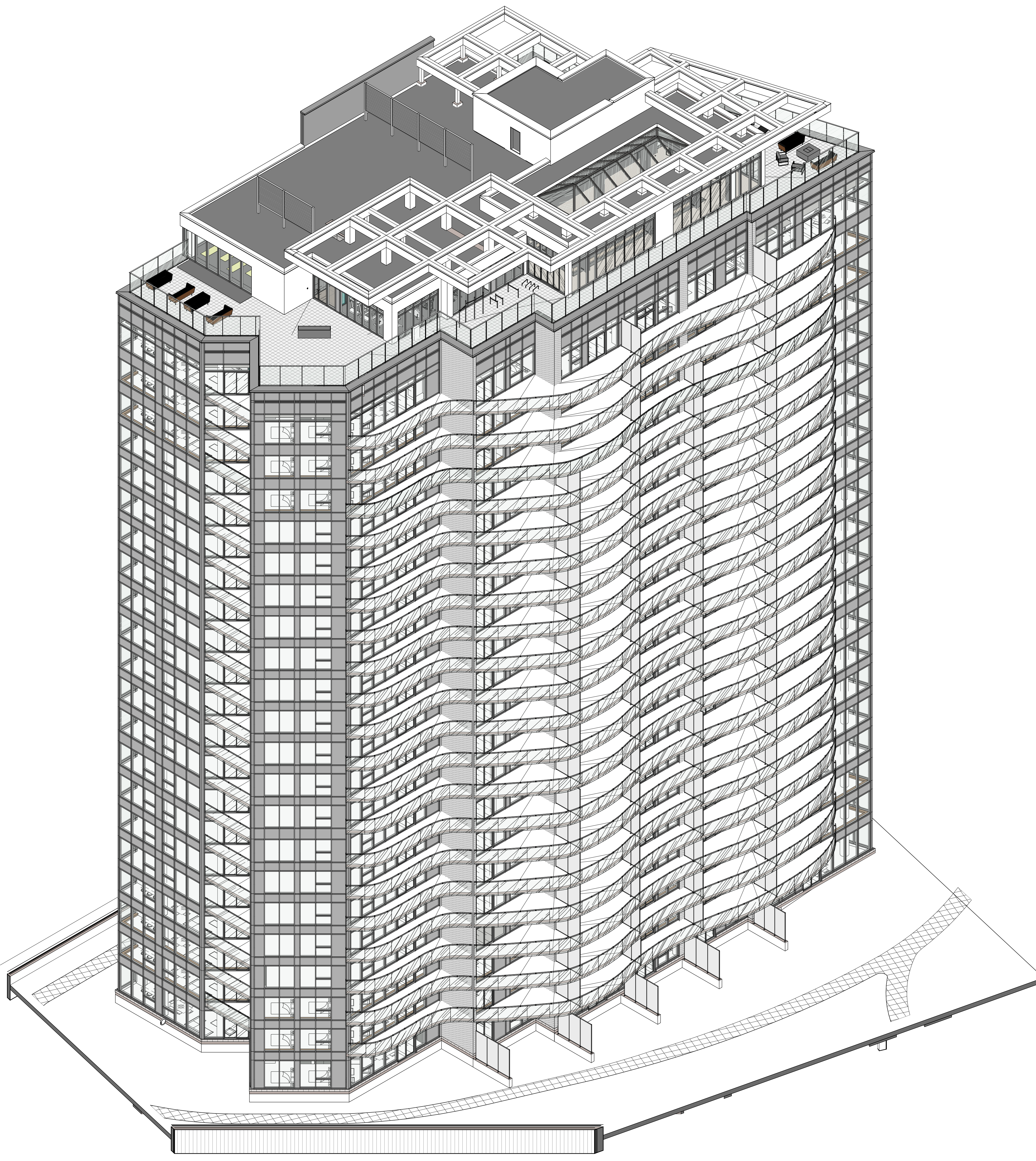
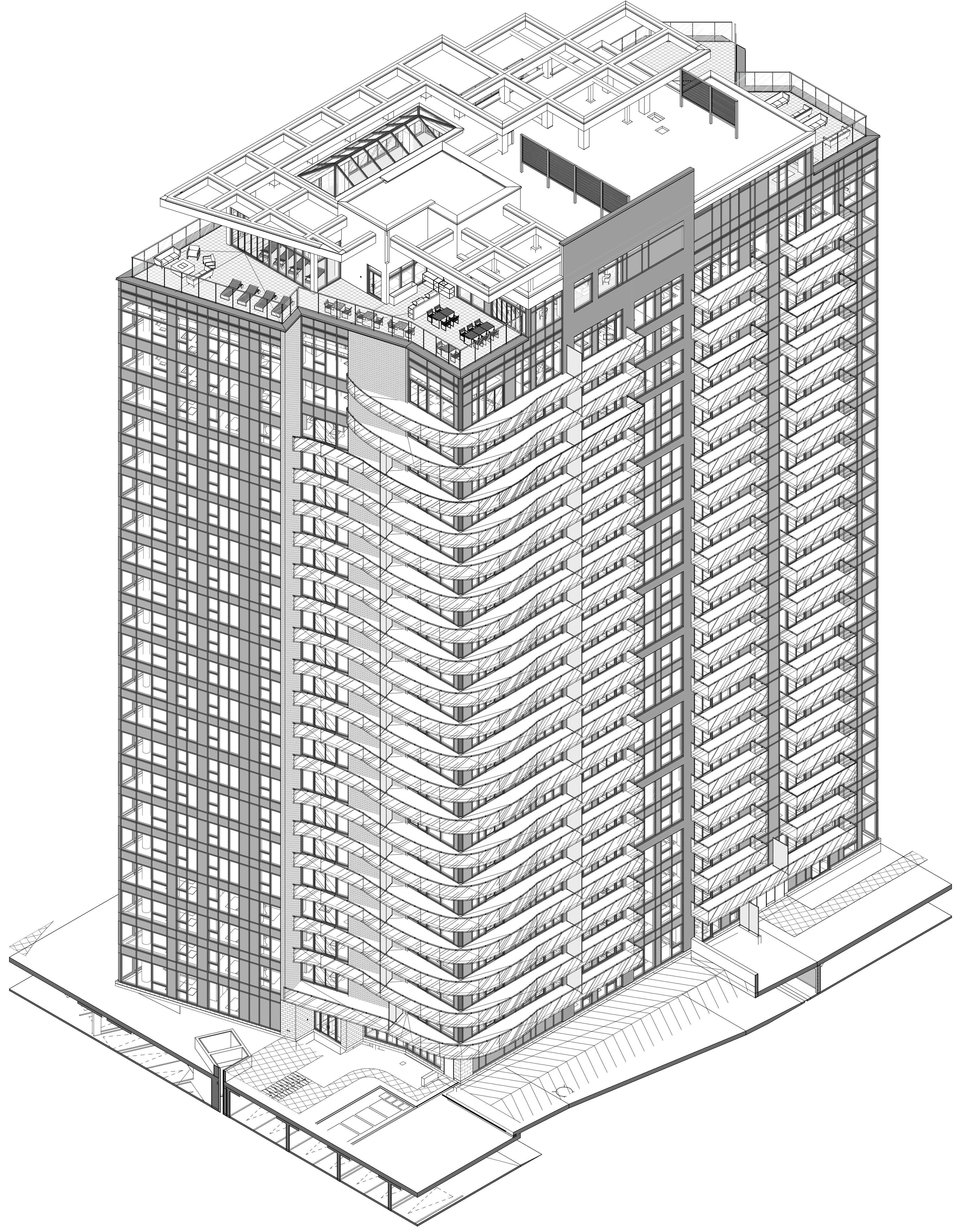


C:\Fichiers Revit\Locaux\PLT4_12190_AFC_R20_rrodd.rvt



ISOMETRIC VIEW NORTH-WEST

1
A002



ISOMETRIC VIEW SOUTH-WEST

2
A002

G. Wildman
GERALDINE WILDMAN
ACTING MANAGER, DEVELOPMENT REVIEW EAST
PLANNING, REAL ESTATE & ECONOMIC DEVELOPMENT
DEPARTMENT, CITY OF OTTAWA

APPROVED
By Geraldine Wildman at 2:32 pm, Nov 10, 2022

NOTES GÉNÉRALES / General Notes
1. Ces documents d'architecture sont la propriété exclusive de NEUF architectes et ne peuvent être utilisés, reproduits ou copiés sans autorisation écrite préalable. / These architectural documents are the exclusive property of NEUF architectes and cannot be used, copied or reproduced without written pre-authorization.
2. Les dimensions apparaissant aux documents doivent être vérifiées par l'entrepreneur avant le début des travaux. / All dimensions which appear on the documents must be verified by the contractor before to start the work.
3. Veuillez aviser l'architecte de toute dimension erreur et/ou divergence entre ces documents et ceux des autres professionnels. / The architect must be notified of all errors, omissions and discrepancies between these documents and those of the other professionals.
4. Les dimensions sur ces documents doivent être lues et non mesurées. / The dimensions on these documents must be read and not measured.

STRUCTURE / Structural
Leroux & Cyr
500 boul. Oum Est, Bureau 105, Montréal QC H3L 3R9
T: 438-381-7773 Courriel: gleroux@leroux-cyr.com

MÉCANIQUE ÉLECTRIQUE / Mechanical/Electrical
Goodkey, Weedmark & Associates Ltd.
1888 Woodward Drive, Ottawa ON K2C 3R5
T: 613-727-5111 Email: ross@goodkey.com

ARCHITECTURE DE PAYSAGE / Landscape Architect
Paterson Group
154 Colborne Road South, Ottawa ON K2E 1J5
T: 613-226-7381 (205) Email: Carole@patersongroup.ca

GÉOTECHNIQUE / Geotechnical
Levstek Consultants Inc.
2871 Ingle Chase, Ottawa ON K0A 2Y6
T: 613-826-0518 Email: revest@larocquetlevstek.com

CIVIL / Civil
exp Services Inc.
2650 Queenview Drive, Suite 100, Ottawa ON K0A 2T0
T: 613-733-6332 Email: bruce.thomas@exp.com
jean.fitzpatrick@exp.com

ARCHITECTES / Architect
NEUF architect(e)s
655, boul. René-Lévesque O, 32e étage, Montréal QC H3B 1S6
T: 514-847-1117 NEUFarchitectes.com

SCEAU / Seal



OUVRAGE / Project
PETRIE'S LANDING I - TOWER 4

EMPLACEMENT / Location
ORLEANS, ON NO PROJET No. **12190.00**

NO	RÉVISION	DATE (aa-mm-jj)
1	For Coordination	2019-10-16
2	For Coordination	2019-11-06
3	30% ISSUE	2020-03-31
4	60% ISSUE	2020-04-28
5	ISSUED FOR INTERNAL REVIEW ARCHITECT	2021-08-03
6	60% ISSUE	2021-09-10
7	ISSUED FOR PERMIT	2021-10-10
8	ISSUED FOR BRIGIL REVIEW (70%)	2021-11-01
9	80% DRAFT ISSUE	2021-12-01
10	ISSUED FOR PERMIT	2021-12-15
11	For Approved SPA Review	2022-01-28

DESSINÉ PAR / Drawn by
MU/RR VÉRIFIÉ PAR / Checked by
MU
DATE (aa-mm-jj) 10/15/2019 ÉCHELLE / Scale

TITRE DU DESSIN / Drawing Title
ISOMETRIC VIEWS

RÉVISION / Revision NO. DESSIN / Drawing Number
11 A002

DOT-15-21-0085
#14602