

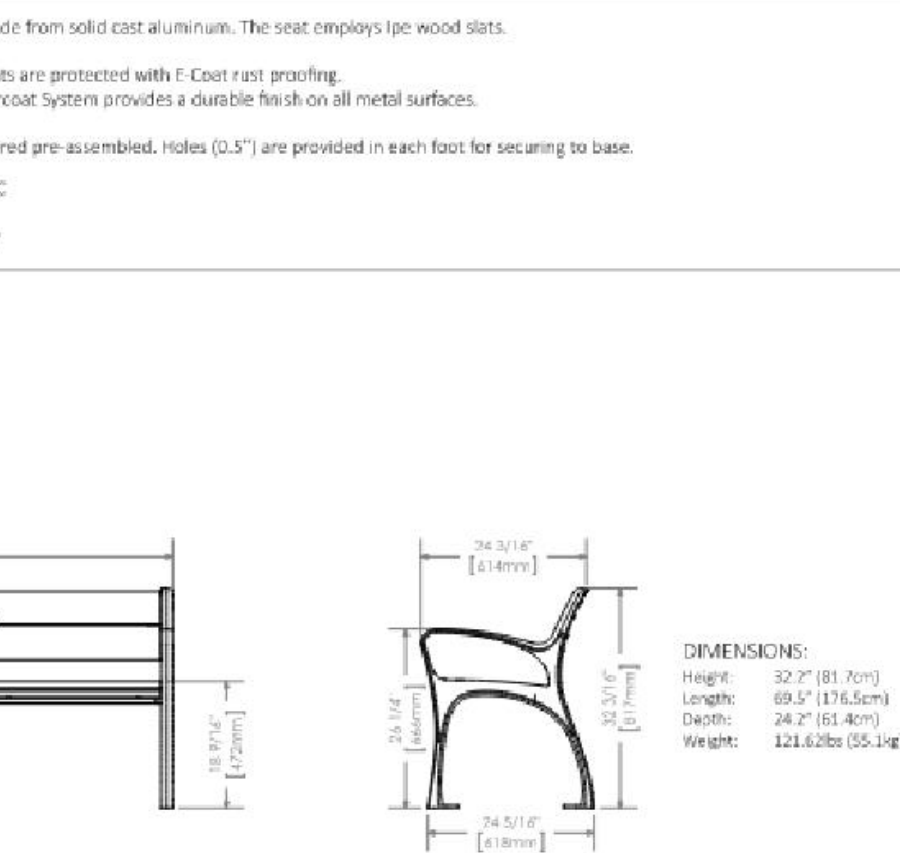
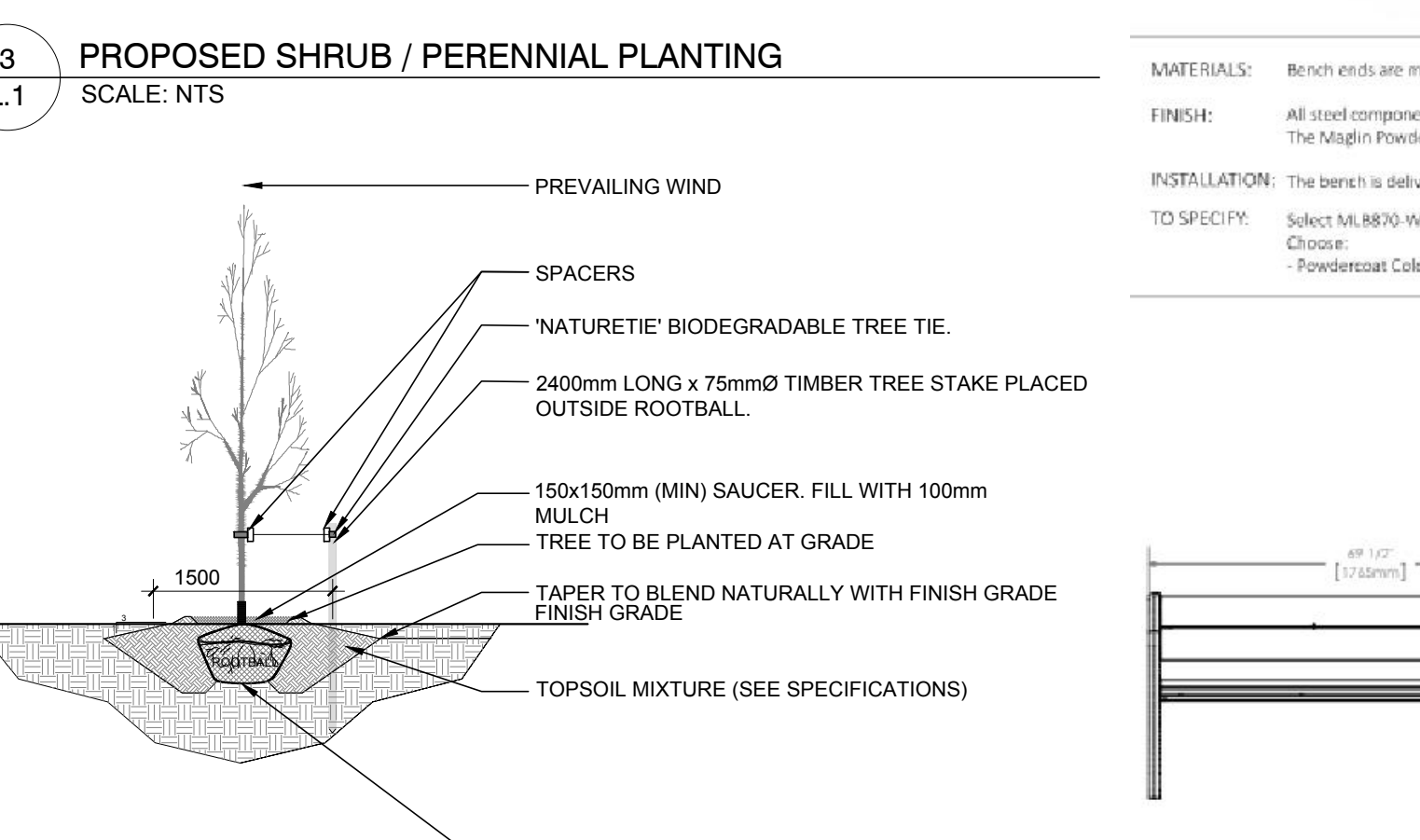
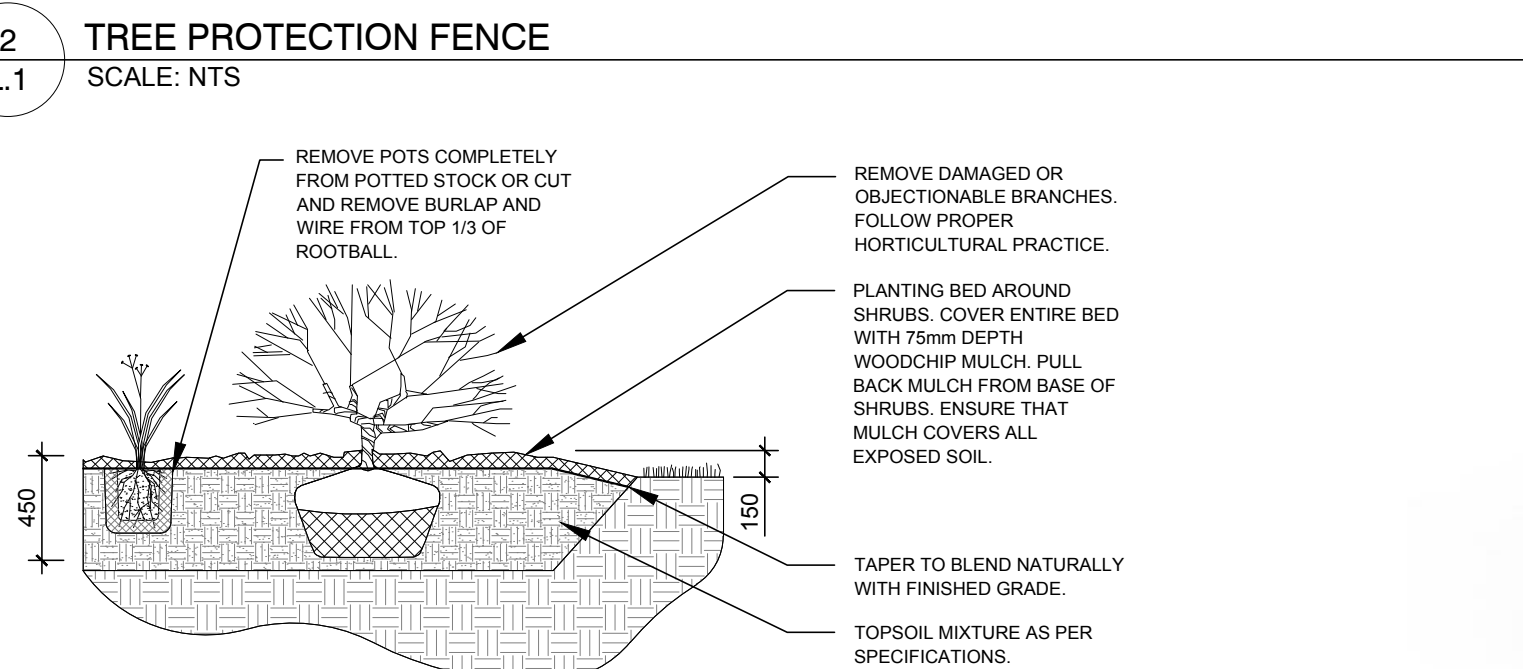
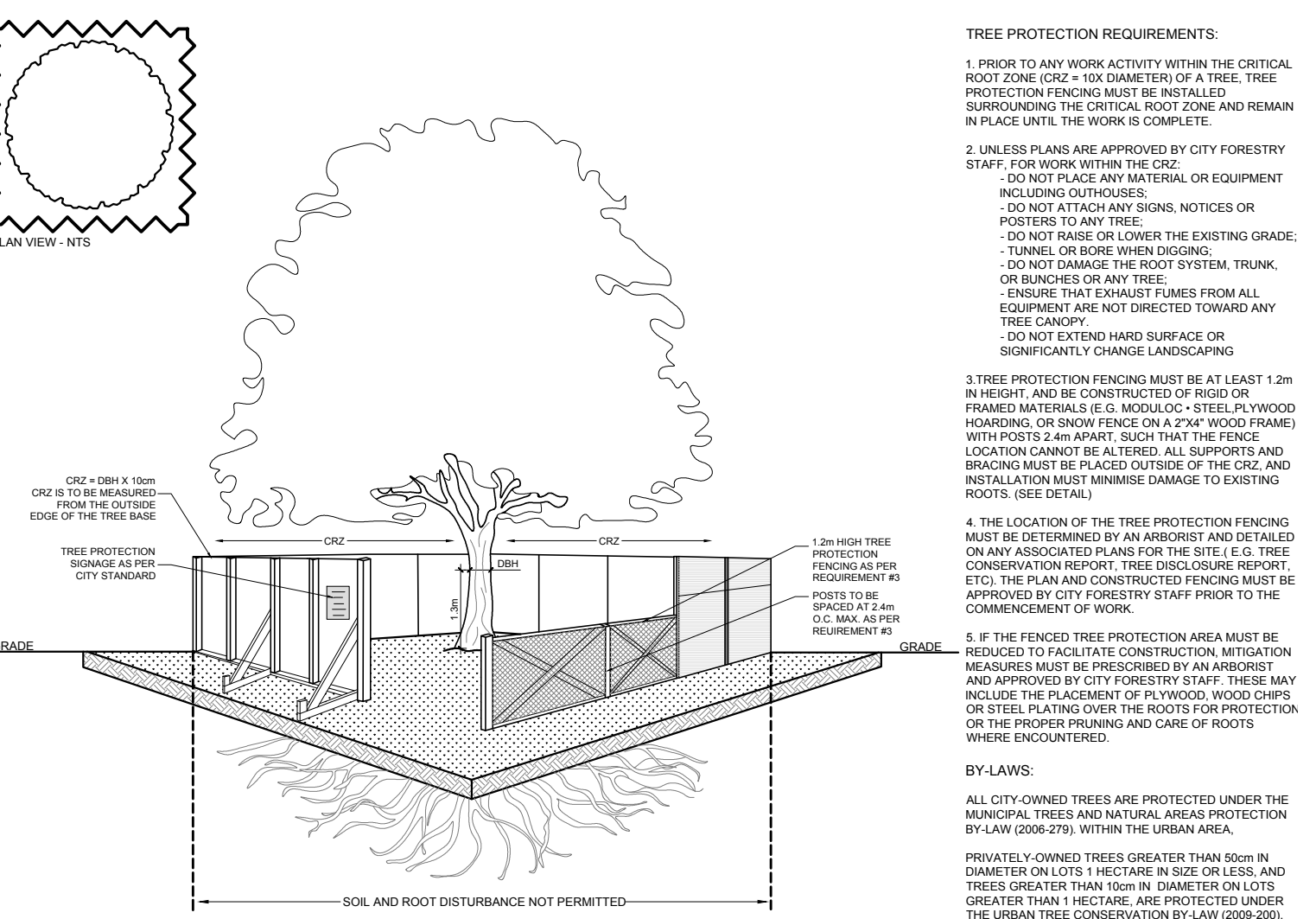
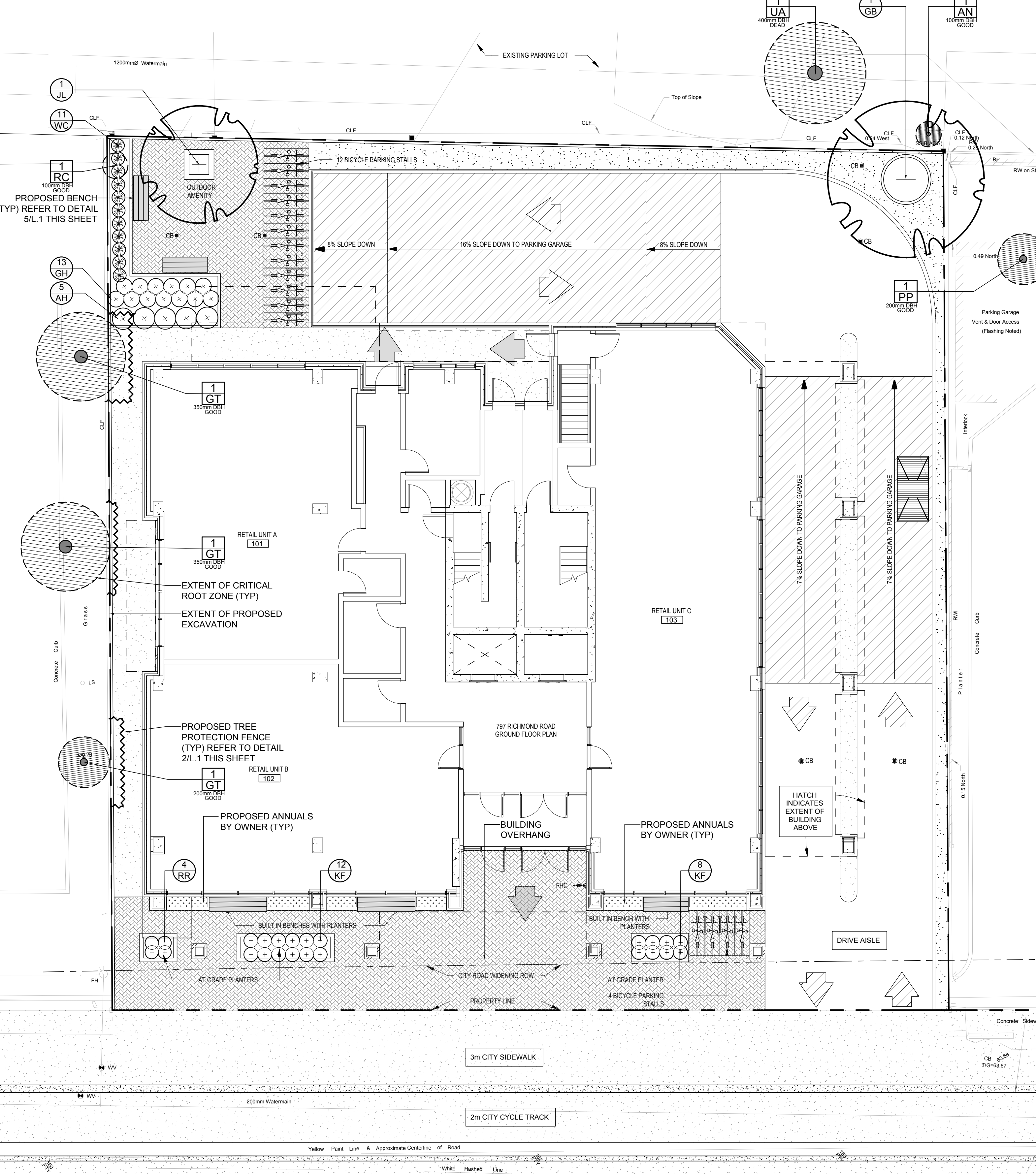
- GENERAL NOTES:**
- It is the responsibility of the appropriate contractor or official to report any errors, omissions or discrepancies on this plan with actual site conditions to the Landscape Architect before proceeding with construction.
 - The contractor is to notify all utility companies and authorities prior to any excavation and ascertain locations of underground services.
 - The contractor is to reinstatement all areas and items damaged as a result of construction activity.
 - The contractor is to comply with all pertinent codes and by-laws.
 - The contractor is to maintain a positive surface run-off throughout the entire construction period.
 - The Landscape Architect is not responsible for subsurface conditions.
 - The contractor is to identify all existing trees to remain on site with the Landscape Architect prior to construction.
 - The contractor is to stake the proposed location of all plant material in conjunction with the Landscape Architect prior to excavation.
 - Minimum distances for selected deciduous trees are as follows:
 - Building Foundations 7.5m
 - Sidewalks 1.5m
 - Public Streets 2.5m
 - Underground Infrastructure 2.0m
 - All trees within 1m of underground utility trenches are to be excavated by hand.
 - Remove all protective wrapping from tree trunks after installation.
 - Staking of trees shall only be performed if necessary.
 - Ensure that mulch is pulled back a min. distance of 75mm from base of tree trunk.

EXISTING TREE LIST

KEY	QTY	BOTANICAL NAME	COMMON NAME	SIZE	CONDITION	REMARKS
TREES						
AN	1	Acer negundo	Manitoba Maple	100mm DBH	Good	To remain
GT	3	Gleditsia triacanthos	Honey Locust	200-350mm DBH	Good	To remain
PP	2	Picea pungens	Colorado Spruce	200mm DBH	Good	To remain
RC	1	Rhamnus cathartica	Common Buckthorn	100mm DBH	Good	To be removed
UA	1	Ulmus americana	American Elm	400mm DBH	Dead	To remain

PROPOSED PLANT LIST

KEY	QTY	BOTANICAL NAME	COMMON NAME	SIZE	CONDITION	REMARKS
TREES						
GB	1	Ginkgo biloba	Maidenhair Tree	60mm Ø	B&B	Male Tree
JL	1	Syringa reticulata	Japanese Tree Lilac	60mm Ø	B&B	Single Leader
SHRUBS						
AH	5	Hydrangea arborescens 'Annabelle'	Annabelle Hydrangea	1 gallon pot	Potted	Space 1000mm o.c.
RR	4	Rosa rugosa	Rugosa rose	800mm pot	Potted	Space 1000mm o.c.
WC	11	Thuja occidentalis	Eastern White Cedar	1500mm Ht.	Bare Root	Space 500mm o.c. 3 trunks or more
PERENNIALS						
GH	13	Hosta 'Guacamole'	Guacamole Hosta	1 gallon pot	Potted	Space 600mm o.c.
KF	20	Calamagrostis 'Karl Foerster'	Feather Reed Grass	250mm pot	Potted	Space 600mm o.c.



CLIENT

LIMA DENTURE AND IMPLANT SOLUTIONS
 797 Richmond Road,
 Ottawa, ON
 Tel: (613) 728-9552

CONSULTANTS

ARCHITECTS:
chmielarchitects
 200 - 109 Bank Street
 Ottawa, ON K1P 5N5
 T (613) 234-3585
 F (613) 234-6224

CIVIL ENGINEERS:
inley CONSULTING ENGINEERS PLANNERS
 2724 Fenton Road,
 Ottawa, ON
 Tel: (613) 822-1052

LEGEND

- EXISTING TREE TO REMAIN
- EXISTING TREE TO BE REMOVED
- TREE PROTECTION FENCE
- PROPOSED SOD
- PROPOSED PEASTONE MULCH
- PROPOSED DECIDUOUS TREE
- PROPOSED SHRUBS / PERENNIALS
- PROPOSED PRECAST CONCRETE PAVERS
- PROPOSED ANNUALS BY OWNER
- PROPOSED BENCH

No.	Issue	Date	DR	CK
8	REVISED PER NEW SITE PLAN	05/30/2022	ML	JL
7	AMENITY AREA REVISED	04/19/2022	ML	JL
6	REVISED PER NEW SITE PLAN	02/07/2022	ML	JL
5	ISSUED FOR COORDINATION	02/03/2022	ML	JL
4	REVISED PER CITY COMMENTS	01/24/2022	ML	JL
3	ISSUED FOR DISCUSSION AND REVIEW	05/18/2021	ML	JL
2	ISSUED FOR DISCUSSION AND REVIEW	05/13/2021	ML	JL
1	ISSUED FOR DISCUSSION AND REVIEW	05/11/2021	ML	JL

JAMES B. LENNOX & ASSOCIATES INC.
LANDSCAPE ARCHITECTS
 3332 CARLING AVE. OTTAWA, ONTARIO K2H 5A8
 Tel: (613) 722-5168 Fax: (866) 343-3942

PROJECT

RICHMOND APARTMENTS
 797 RICHMOND ROAD, OTTAWA ON

DRAWING

TREE CONSERVATION REPORT & LANDSCAPE PLAN

STAMP

AS SHOWN
 START DATE
 MAY 2021
 PROJECT NO.
 21CHM2138

PROJECT NORTH

DRAWING NO.

L.1

PLOT SIZE ARCH-D

1 TREE CONSERVATION REPORT & LANDSCAPE PLAN
 SCALE 1:100



4 DECIDUOUS TREE PLANTING
 SCALE: NTS

5 PROPOSED BENCH
 SCALE: NTS

D07-12-21-0088

#18550