

LEGEND AND ABBREVIATIONS

- BUILDING EXIT
- DIRECTIONAL TRAFFIC ARROW
- EXTENT OF BUILDING ABOVE
- EXTENT OF PERMITTED PROJECTIONS ABOVE
- EXISTING ADJACENT BUILDINGS
- CONCRETE SIDEWALK, REFER TO CIVIL, LANDSCAPE
- INTERLOCK, REFER TO CIVIL, LANDSCAPE
- BICYCLE PARKING

F.Y.S. FRONT YARD SETBACK
R.Y.S. REAR YARD SETBACK
S.Y.S. SIDE YARD SETBACK
CB. CATCH BASIN

PROJECT INFORMATION

PART OF LOT 26 AND 27
 CONCESSION 1 (OTTAWA FRONT)
 Geographic Township Of Nepean
 CITY OF OTTAWA

PROJECT TEAM

ARCHITECT
 Chmiel Architects Inc.
 109 Bank Street, Suite 200
 Ottawa, ON K1P 5N5
 Phone: 613-234-3585
 Fax: 613-234-6224
 Email: info@chmielarchitects.com
 http://www.chmielarchitects.com

GEOTECHNICAL
 Paterson Group
 Head Office: Colonnade RD South,
 Ottawa, ON K2E7J5
 Phone: 613-226-7381
 Fax: 613-226-6344
 https://www.patersongroup.ca

MECHANICAL & ELECTRICAL
 Modern Niagara
 Phone: (613) 591-1505
 Fax: (613) 591-1523
 https://www.modernniagara.com

STRUCTURAL
 Cleland Jardine Engineering Ltd
 200-580 Terry Fox Drive
 Kanata, ON K2L 4S9
 Phone: 613-591-1533
 Fax: 613-591-1703
 Email: mail@clelandjardine.com
 http://clelandjardine.com

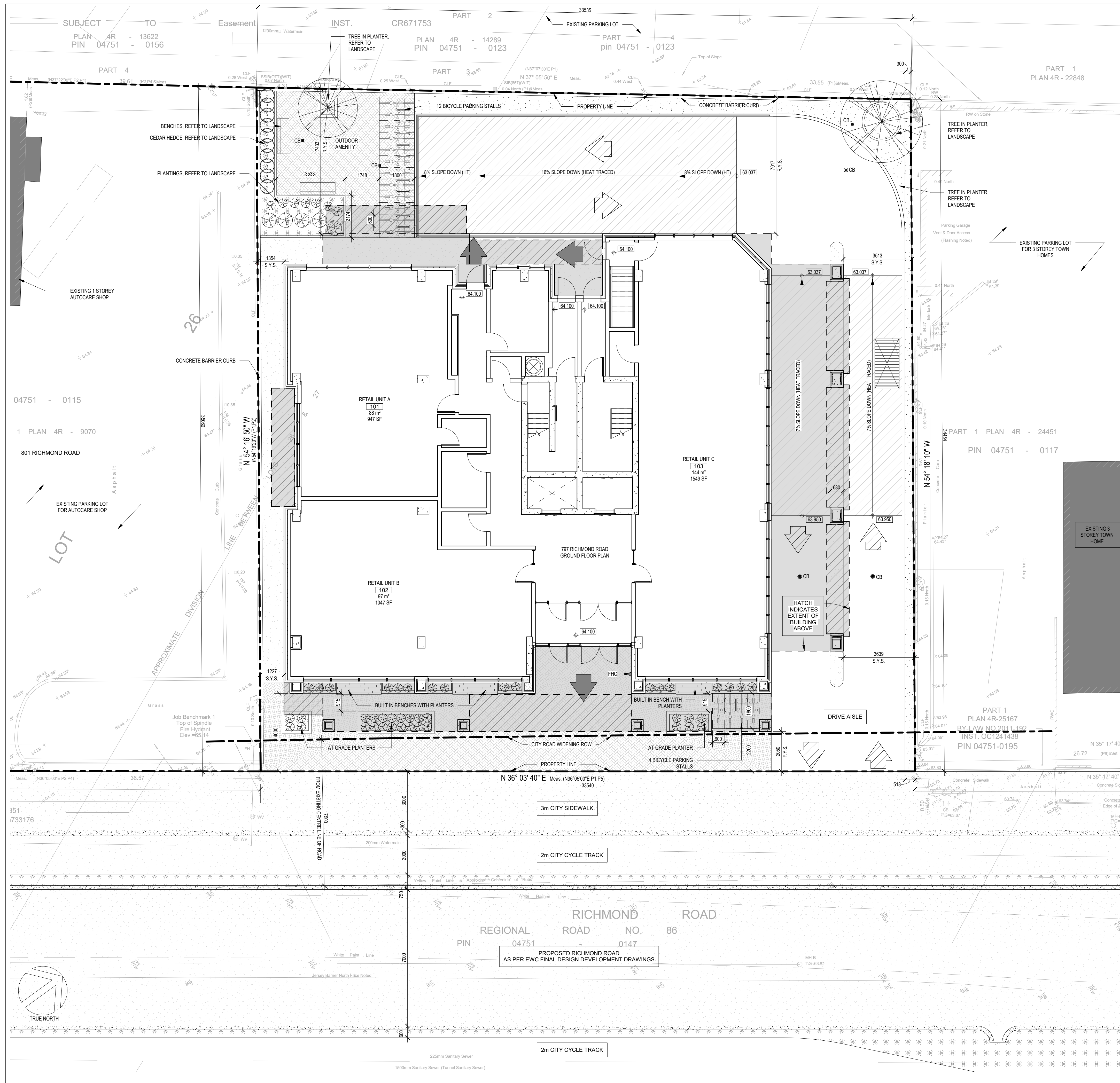
CIVIL
 Ainley Group
 2724 Fenton Road,
 Ottawa, ON K1T 3T7
 Phone: 613-822-1052
 Email: ottawa@ainleygroup.com
 https://www.ainleygroup.com

LANDSCAPE
 James B. Lennox & Associates Inc.
 3332 Carling Ave.
 Ottawa, ON K2H 5A8
 Phone: 613-722-5168
 Email: jbl@jbla.ca

PROPERTY INFORMATION

SURVEY AND PROPERTY INFORMATION IS TAKEN FROM ANNIS, OSULLIVAN, VOLLEBECK LTD SURVEY DATED 2020-10-26

RICHMOND ROAD AND NEW STREETSCAPE INFORMATION TAKEN FROM EWC DESIGNERS DRAWING NUMBER EJV-S2RDR1-RWY-DWG-3014, STAGE 2 CONFEDERATION LINE EAST, ISSUED FOR FINAL DESIGN DEVELOPMENT 2021-04-15.



NOTE: THIS DRAWING IS THE PROPERTY OF THE ARCHITECT AND MAY NOT BE REPRODUCED OR USED WITHOUT THE EXPRESSED CONSENT OF THE ARCHITECT. THE CONTRACTOR SHALL CHECK AND VERIFY ALL DIMENSIONS AND REPORT ANY OMISSIONS OR DISCREPANCIES TO THE ARCHITECT BEFORE PROCEEDING WITH THE WORK.

DO NOT SCALE THE DRAWINGS

RELEASE / REVISION RECORD

No.	Description	Date
3	ISSUED FOR COORDINATION	21-04-05
4	ISSUED FOR COORDINATION	21-04-14
5	ISSUED FOR COORDINATION	21-05-05
6	RESUBMITTED FOR COORDINATION	21-05-05
7	ISSUED FOR COORDINATION	21-05-12
8	ISSUED FOR SITE PLAN CONTROL	21-06-09
9	ISSUED FOR COORDINATION	22-01-18
10	ISSUED FOR SPC 1ST RESPONSE TO COMMENTS	22-02-04
11	ISSUED FOR CONSULTANT COORDINATION	22-05-27
12	ISSUED FOR SPC 2ND RESPONSE TO COMMENTS	22-06-02

OWNER

Dentech Holdings Inc.
 797 Richmond Road, Ottawa, ON K2A 0G7
 dentech_899@hotmail.com

PROJECT NORTH

MAY NOT BE USED FOR CONSTRUCTION UNLESS SIGNED BY THE ARCHITECT

chmielarchitects
 200 - 109 Bank Street
 Ottawa, ON K1P 5N5
 t (613) 234-3585
 f (613) 234-6224

797 RICHMOND APARTMENTS

797 RICHMOND ROAD

PROJECT NO. 20-1881
DRAWN CG
SCALE As indicated
CHECKED RAC

DRAWING TITLE
 SITE PLAN AT GROUND FLOOR

DRAWING NO.
 SP-002

D07-12-21-0088