

PLAN OF SURVEY
 PART OF LOT 26 AND 27
 CONCESSION 1 (OTTAWA FRONT)
 Geographic Township Of Nepean
 CITY OF OTTAWA

Prepared by Annis, O'Sullivan, Vollebek Ltd.



Metric
 DISTANCES SHOWN ON THIS PLAN ARE IN METRES AND
 CAN BE CONVERTED TO FEET BY DIVIDING BY 0.3048

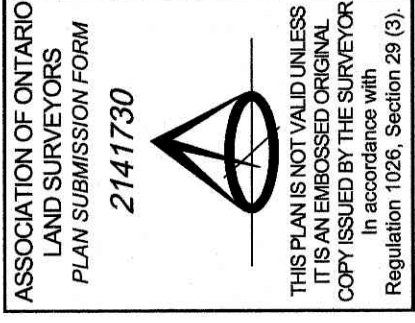
Surveyor's Certificate

I CERTIFY THAT:
 1. This survey and plan are correct and in accordance with the Surveys Act and the regulations made under them.
 2. The survey was completed on the 22nd day of October, 2020.

Date: Oct 26, 2020
 Signature: [Signature]
 Name: Richard R. Gaultier
 Title: Ontario Land Surveyor

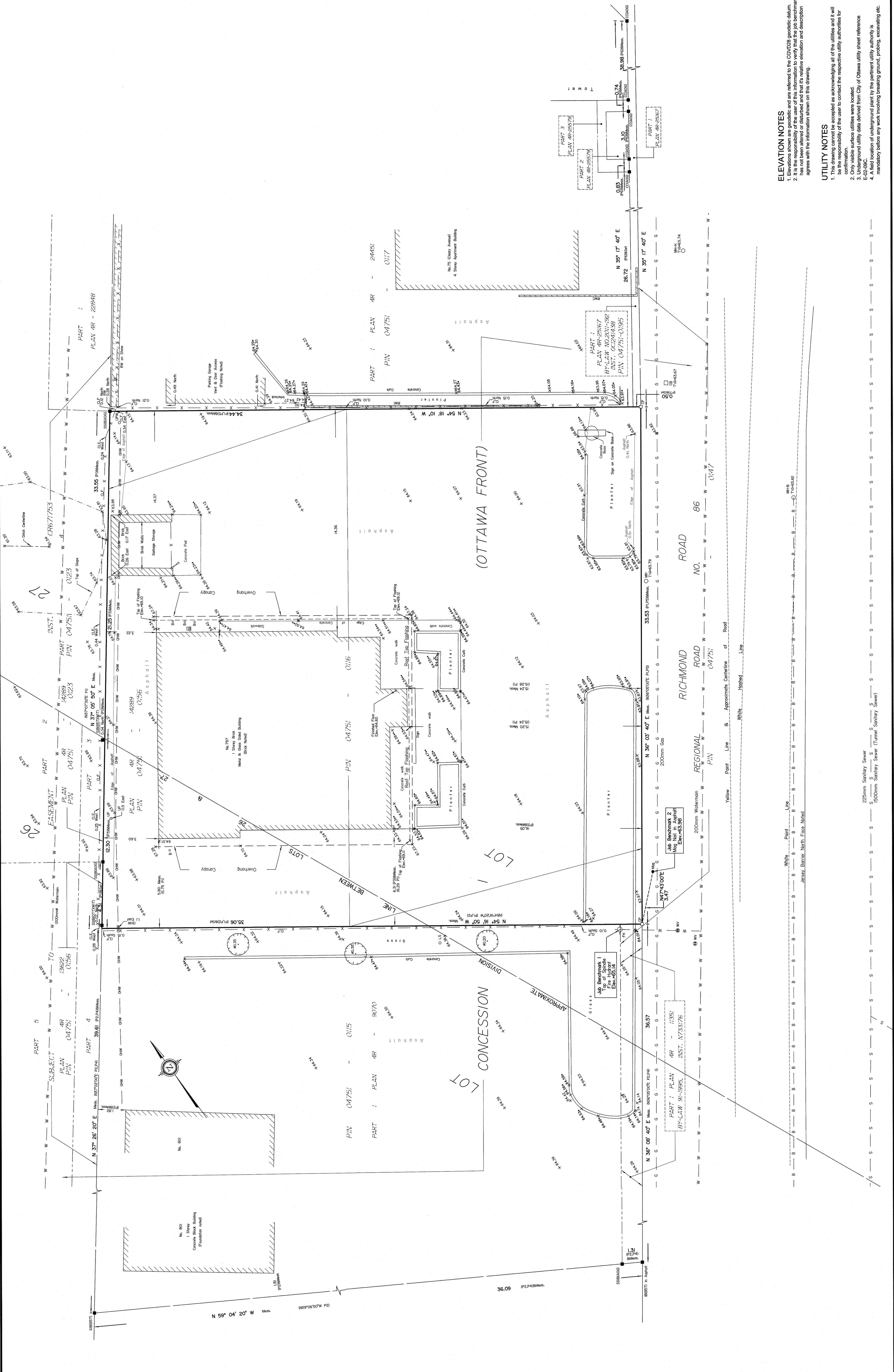
Notes & Legend

- Denotes**
- O — Survey Monument Planted
 - SIB — Survey Monument Found
 - SSB — Short Standard Iron Bar
 - IB — Iron Bar
 - CP — Concrete Pin
 - CC — Cut Cross
 - (WT) — Witness
 - Meas. — Measured
 - (AO3) — (AO3) Plan Dated December 29, 2000
 - (P1) — (AO3) Plan Dated June 21, 1999
 - (P2) — (AO3) Plan Dated June 21, 1999
 - (P3) — (AO3) Plan Dated June 21, 1999
 - (P4) — (AO3) Plan Dated June 21, 1999
 - (P5) — (AO3) Plan Dated June 21, 1999
 - (P6) — (AO3) Plan Dated June 21, 1999
 - (P7) — (AO3) Plan Dated June 21, 1999
 - Decid. Tree — Deciduous Tree
 - Coniferous Tree — Coniferous Tree
 - Fin. Midstret — Fire Hydrant
 - W.V. — Water Valve
 - R.V. — Retaining Wall
 - O.M.H. — Maintenance Hole (Bell Telephone)
 - O.M.H. — Maintenance Hole (Hydro)
 - O.M.H. — Maintenance Hole (Underpass)
 - V.C. — Valve Chamber (Watermain)
 - U.S. — Underground Sanitary Sewer
 - U.W. — Underground Water
 - G. — Overhead Gas
 - W. — Overhead Wires
 - C.M. — Catch Basin
 - G.M. — Gas Meter
 - B. — Bollard
 - C.L.F. — Chain Link Fence
 - B.F. — Board Fence
 - R.W.I. — Retaining Wall Interlock
 - R.W.C. — Retaining Wall Concrete
 - G. — Gate
 - U.P. — Utility Pole
 - O.L.P. — Utility Pole Wood
 - O.L.S. — Light Standard
 - D. — Diameter
 - L.O.E. — Location of Elevations
 - C.C.E. — Top of Concrete Curb Elevations
 - C. — Centreline
 - P.L. — Property Line



Bearings are grid, derived from Can-Mod 2016 Real Time Network
 elevations, with Zone 5 (17° 30' West Longitude) NAD-83
 (original).
 For comparison purposes, a rotation of 0° 01' 50" Counter Clockwise
 was applied to Plans (P1, P2, P3 & P4)

© Annis, O'Sullivan, Vollebek Ltd. 2020. THIS PLAN IS PROTECTED BY COPYRIGHT.
 ANNIS, O'SULLIVAN, VOLLEBEK LTD.
 14 Nepean, Ont. K2E 7S9
 Phone: (613) 777-0880 / Fax: (613) 777-0799
 Lic. No. 2015-02-188266, P.M. 28827, R.L. 1947, I.F. 181



ELEVATION NOTES

1. Elevation data was referred to the CGVD28 geoid datum.
2. It is the responsibility of the user of this information to verify that the job benchmark has not been altered or disturbed and that its relative elevation and description agrees with the information shown on the drawing.

UTILITY NOTES

1. This drawing cannot be accepted as acknowledging all of the utilities and it will be the responsibility of the user to contact the respective utility authorities for confirmation.
2. Only visible surface utilities were located.
3. Utility and utility data derived from City of Ottawa utility sheet reference E-02-08C.
4. A field location of underground plant by the pertinent utility authority is mandatory before any work involving breaking ground, probing, excavating, etc.

